



Pulleys - Timing - 2.000mm Pitch - GT - 6mm Wide - Aluminium

10/4/2018

Indicates item not stocked at time of printing - Please enquire for lead time

E&OE Pricing and all details subject to change without notice - Copyright Miniature Bearings Australia Pty Ltd

MBA Size Listings are a guide to sizes only and must not be solely relied on for critical design information.

Page 1 of 29

INFORMATION

Timing Pulleys to suit 2mm Pitch GT Timing Belts 6mm Wide.

For easy ready selected sets of timing belts and pulleys please see the HES website

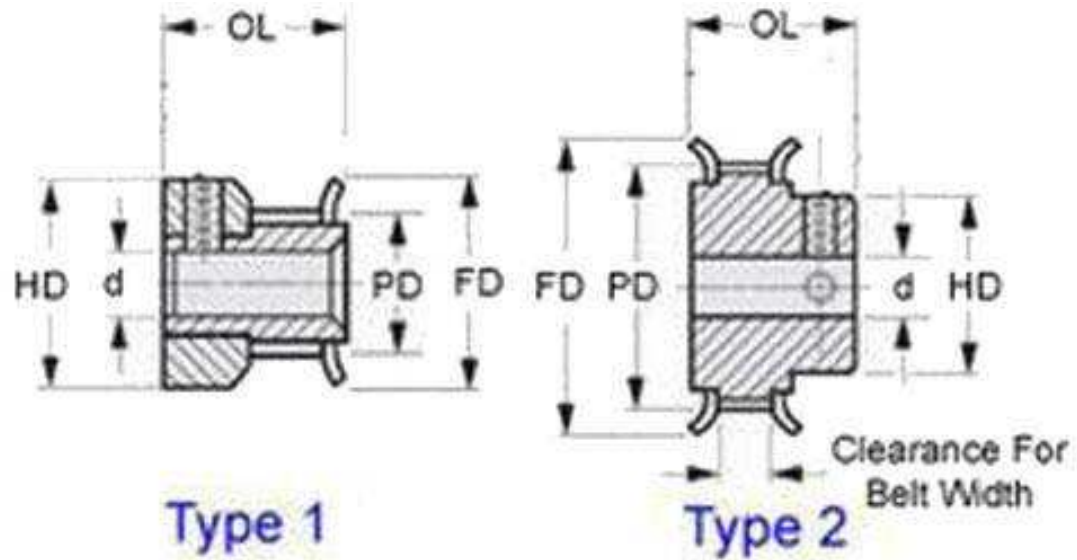
This catalogue to be read in conjunction with information at
<http://www.minibearings.com.au/partlist/beltstiming2000mmpitchgt6mmwide/beltstiming2000mmpitchgt6mmwide/A/1/>

<http://www.minibearings.com.au/www.smallparts.com.au/store/categories/easy+kits/>

Indicates item not stocked at time of printing - Please enquire for lead time

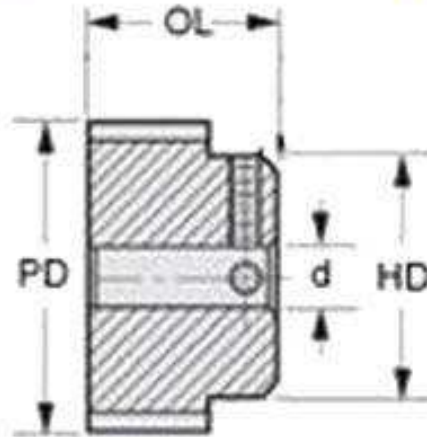
E&OE Pricing and all details subject to change without notice - Copyright Miniature Bearings Australia Pty Ltd

MBA Size Listings are a guide to sizes only and must not be solely relied on for critical design information.



Type 1

Type 2



Type 3

Indicates item not stocked at time of printing - Please enquire for lead time

E&OE Pricing and all details subject to change without notice - Copyright Miniature Bearings Australia Pty Ltd

MBA Size Listings are a guide to sizes only and must not be solely relied on for critical design information.

Pulleys - Timing - 2.000mm Pitch - GT - 6mm Wide - Aluminium

Part Number	Teeth	Max Belt Width mm	Bore (d) mm	Material	Locking Type	Type (See Diagram)	Pitch Diameter (PD) mm	Flange Diameter (FD) mm	Overall Length (OL) mm	Hub Diameter (HD) mm
		<i>inches</i>	<i>inches</i>				<i>inches</i>	<i>inches</i>	<i>inches</i>	<i>inches</i>
P-020G-012-060FH-AL-G-030	12	6.4	3.000	Aluminium Alloy - Clear Anodised	Set Screw	1	7.64	12.2	14.30	12.20
		<i>0.252</i>	<i>0.118</i>				<i>0.301</i>	<i>0.480</i>	<i>0.563</i>	<i>0.480</i>
P-020G-012-060FH-AL-G-032	12	6.4	3.175	Aluminium Alloy - Clear Anodised	Set Screw	1	7.64	12.2	14.29	12.19
		<i>0.252</i>	<i>0.125</i>				<i>0.301</i>	<i>0.480</i>	<i>0.563</i>	<i>0.480</i>
P-020G-013-060FH-AL-G-030	13	6.4	3.000	Aluminium Alloy - Clear Anodised	Set Screw	1	8.27	12.8	14.30	12.80
		<i>0.252</i>	<i>0.118</i>				<i>0.326</i>	<i>0.504</i>	<i>0.563</i>	<i>0.504</i>
# P-020G-013-060FH-AL-G-032	13	6.4	3.175	Aluminium Alloy - Clear Anodised	Set Screw	1	8.27	12.8	14.29	12.83
		<i>0.252</i>	<i>0.125</i>				<i>0.326</i>	<i>0.504</i>	<i>0.563</i>	<i>0.505</i>
# P-020G-014-060FH-AL-G-030	14	6.4	3.000	Aluminium Alloy - Clear Anodised	Set Screw	1	8.91	13.5	14.30	1.50
		<i>0.252</i>	<i>0.118</i>				<i>0.351</i>	<i>0.531</i>	<i>0.563</i>	<i>0.059</i>
# P-020G-014-060FH-AL-G-032	14	6.4	3.175	Aluminium Alloy - Clear Anodised	Set Screw	1	8.91	13.5	14.29	13.46
		<i>0.252</i>	<i>0.125</i>				<i>0.351</i>	<i>0.531</i>	<i>0.563</i>	<i>0.530</i>
P-020G-015-060FH-AL-G-040	15	6.4	4.000	Aluminium Alloy - Clear Anodised	Set Screw	1	9.55	14.1	14.30	14.10
		<i>0.252</i>	<i>0.157</i>				<i>0.376</i>	<i>0.555</i>	<i>0.563</i>	<i>0.555</i>

Indicates item not stocked at time of printing - Please enquire for lead time

Page 4 of 29

E&OE Pricing and all details subject to change without notice - Copyright Miniature Bearings Australia Pty Ltd

MBA Size Listings are a guide to sizes only and must not be solely relied on for critical design information.

Pulleys - Timing - 2.000mm Pitch - GT - 6mm Wide - Aluminium

Part Number	Teeth	Max Belt Width mm	Bore (d) mm	Material	Locking Type	Type (See Diagram)	Pitch Diameter (PD) mm	Flange Diameter (FD) mm	Overall Length (OL) mm	Hub Diameter (HD) mm
		<i>inches</i>	<i>inches</i>				<i>inches</i>	<i>inches</i>	<i>inches</i>	<i>inches</i>
# P-020G-015-060FH-AL-G-048	15	6.4	4.763	Aluminium Alloy - Clear Anodised	Set Screw	1	9.55	15.0	14.29	14.97
		<i>0.252</i>	<i>0.188</i>				<i>0.376</i>	<i>0.591</i>	<i>0.563</i>	<i>0.589</i>
# P-020G-015-060FH-AL-FL-048	15	6.4	4.763	Aluminium Alloy - Clear Anodised	Fairloc Hub - tm-	1	9.55	15.0	14.29	14.73
		<i>0.252</i>	<i>0.188</i>				<i>0.376</i>	<i>0.591</i>	<i>0.563</i>	<i>0.580</i>
P-020G-015-060FH-AL-FL-050	15	6.4	5.000	Aluminium Alloy - Clear Anodised	Fairloc Hub - tm-	1	9.55	14.1	14.30	14.70
		<i>0.252</i>	<i>0.197</i>				<i>0.376</i>	<i>0.555</i>	<i>0.563</i>	<i>0.579</i>
# P-020G-016-060FH-AL-G-040	16	6.4	4.000	Aluminium Alloy - Clear Anodised	Set Screw	1	10.18	14.7	14.30	14.70
		<i>0.252</i>	<i>0.157</i>				<i>0.401</i>	<i>0.579</i>	<i>0.563</i>	<i>0.579</i>
# P-020G-016-060FH-AL-FL-048	16	6.4	4.763	Aluminium Alloy - Clear Anodised	Fairloc Hub - tm-	1	10.18	14.7	14.29	14.73
		<i>0.252</i>	<i>0.188</i>				<i>0.401</i>	<i>0.579</i>	<i>0.563</i>	<i>0.580</i>
# P-020G-016-060FH-AL-G-048	16	6.4	4.763	Aluminium Alloy - Clear Anodised	Set Screw	1	10.18	14.7	14.29	14.73
		<i>0.252</i>	<i>0.188</i>				<i>0.401</i>	<i>0.579</i>	<i>0.563</i>	<i>0.580</i>
P-020G-016-060FH-AL-FL-050	16	6.4	5.000	Aluminium Alloy - Clear Anodised	Fairloc Hub - tm-	1	10.18	14.7	14.30	14.70
		<i>0.252</i>	<i>0.197</i>				<i>0.401</i>	<i>0.579</i>	<i>0.563</i>	<i>0.579</i>

Indicates item not stocked at time of printing - Please enquire for lead time

Page 5 of 29

E&OE Pricing and all details subject to change without notice - Copyright Miniature Bearings Australia Pty Ltd
MBA Size Listings are a guide to sizes only and must not be solely relied on for critical design information.

Pulleys - Timing - 2.000mm Pitch - GT - 6mm Wide - Aluminium

Part Number	Teeth	Max Belt Width mm	Bore (d) mm	Material	Locking Type	Type (See Diagram)	Pitch Diameter (PD) mm	Flange Diameter (FD) mm	Overall Length (OL) mm	Hub Diameter (HD) mm
		<i>inches</i>	<i>inches</i>				<i>inches</i>	<i>inches</i>	<i>inches</i>	<i>inches</i>
P-020G-017-060FF-AL-G-040	17	6.4	4.000	Aluminium Alloy - Clear Anodised	Set Screw	2	10.82	16.1	15.90	7.90
		<i>0.252</i>	<i>0.157</i>				<i>0.426</i>	<i>0.634</i>	<i>0.626</i>	<i>0.311</i>
P-020G-017-060FF-AL-G-048	17	6.4	4.763	Aluminium Alloy - Clear Anodised	Set Screw	2	10.82	16.1	15.88	7.93
		<i>0.252</i>	<i>0.188</i>				<i>0.426</i>	<i>0.634</i>	<i>0.625</i>	<i>0.312</i>
P-020G-017-060FH-AL-G-060	17	6.4	6.000	Aluminium Alloy - Clear Anodised	Set Screw	1	10.82	16.1	14.30	16.10
		<i>0.252</i>	<i>0.236</i>				<i>0.426</i>	<i>0.634</i>	<i>0.563</i>	<i>0.634</i>
P-020G-017-060FH-AL-G-064	17	6.4	6.350	Aluminium Alloy - Clear Anodised	Set Screw	1	10.82	16.1	14.29	16.13
		<i>0.252</i>	<i>0.250</i>				<i>0.426</i>	<i>0.634</i>	<i>0.563</i>	<i>0.635</i>
# P-020G-018-060FF-AL-G-040	18	6.4	4.000	Aluminium Alloy - Clear Anodised	Set Screw	2	11.45	16.1	15.90	7.90
		<i>0.252</i>	<i>0.157</i>				<i>0.451</i>	<i>0.634</i>	<i>0.626</i>	<i>0.311</i>
# P-020G-018-060FF-AL-G-048	18	6.4	4.763	Aluminium Alloy - Clear Anodised	Set Screw	2	11.45	16.1	15.88	7.93
		<i>0.252</i>	<i>0.188</i>				<i>0.451</i>	<i>0.634</i>	<i>0.625</i>	<i>0.312</i>
# P-020G-018-060FH-AL-FL-048	18	6.4	4.763	Aluminium Alloy - Clear Anodised	Fairloc Hub - tm-	1	11.45	16.1	14.29	15.88
		<i>0.252</i>	<i>0.188</i>				<i>0.451</i>	<i>0.634</i>	<i>0.563</i>	<i>0.625</i>

Indicates item not stocked at time of printing - Please enquire for lead time

Page 6 of 29

E&OE Pricing and all details subject to change without notice - Copyright Miniature Bearings Australia Pty Ltd
MBA Size Listings are a guide to sizes only and must not be solely relied on for critical design information.

Pulleys - Timing - 2.000mm Pitch - GT - 6mm Wide - Aluminium

Part Number	Teeth	Max Belt Width mm	Bore (d) mm	Material	Locking Type	Type (See Diagram)	Pitch Diameter (PD) mm	Flange Diameter (FD) mm	Overall Length (OL) mm	Hub Diameter (HD) mm
		<i>inches</i>	<i>inches</i>				<i>inches</i>	<i>inches</i>	<i>inches</i>	<i>inches</i>
# P-020G-018-060FH-AL-FL-050	18	6.4	5.000	Aluminium Alloy - Clear Anodised	Fairloc Hub - tm-	1	11.45	16.1	14.30	15.90
		<i>0.252</i>	<i>0.197</i>				<i>0.451</i>	<i>0.634</i>	<i>0.563</i>	<i>0.626</i>
P-020G-018-060FH-AL-G-060	18	6.4	6.000	Aluminium Alloy - Clear Anodised	Set Screw	1	11.45	16.1	14.30	16.10
		<i>0.252</i>	<i>0.236</i>				<i>0.451</i>	<i>0.634</i>	<i>0.563</i>	<i>0.634</i>
# P-020G-018-060FH-AL-G-064	18	6.4	6.350	Aluminium Alloy - Clear Anodised	Set Screw	1	11.45	16.1	14.29	16.13
		<i>0.252</i>	<i>0.250</i>				<i>0.451</i>	<i>0.634</i>	<i>0.563</i>	<i>0.635</i>
# P-020G-019-060FF-AL-G-040	19	6.4	4.000	Aluminium Alloy - Clear Anodised	Set Screw	2	12.09	16.1	15.90	8.60
		<i>0.252</i>	<i>0.157</i>				<i>0.476</i>	<i>0.634</i>	<i>0.626</i>	<i>0.339</i>
# P-020G-019-060FF-AL-G-048	19	6.4	4.763	Aluminium Alloy - Clear Anodised	Set Screw	2	12.09	16.1	15.88	8.59
		<i>0.252</i>	<i>0.188</i>				<i>0.476</i>	<i>0.634</i>	<i>0.625</i>	<i>0.338</i>
P-020G-019-060FH-AL-G-060	19	6.4	6.000	Aluminium Alloy - Clear Anodised	Set Screw	1	12.09	16.1	14.30	16.10
		<i>0.252</i>	<i>0.236</i>				<i>0.476</i>	<i>0.634</i>	<i>0.563</i>	<i>0.634</i>
# P-020G-019-060FH-AL-G-064	19	6.4	6.350	Aluminium Alloy - Clear Anodised	Set Screw	1	12.09	16.1	14.29	16.13
		<i>0.252</i>	<i>0.250</i>				<i>0.476</i>	<i>0.634</i>	<i>0.563</i>	<i>0.635</i>

Indicates item not stocked at time of printing - Please enquire for lead time

Page 7 of 29

E&OE Pricing and all details subject to change without notice - Copyright Miniature Bearings Australia Pty Ltd

MBA Size Listings are a guide to sizes only and must not be solely relied on for critical design information.

Pulleys - Timing - 2.000mm Pitch - GT - 6mm Wide - Aluminium

Part Number	Teeth	Max Belt Width mm	Bore (d) mm	Material	Locking Type	Type (See Diagram)	Pitch Diameter (PD) mm	Flange Diameter (FD) mm	Overall Length (OL) mm	Hub Diameter (HD) mm
		<i>inches</i>	<i>inches</i>				<i>inches</i>	<i>inches</i>	<i>inches</i>	<i>inches</i>
P-020G-020-060FF-AL-G-040	20	6.4	4.000	Aluminium Alloy - Clear Anodised	Set Screw	2	12.73	17.4	15.90	9.20
		<i>0.252</i>	<i>0.157</i>				<i>0.501</i>	<i>0.685</i>	<i>0.626</i>	<i>0.362</i>
# P-020G-020-060FH-AL-FL-048	20	6.4	4.763	Aluminium Alloy - Clear Anodised	Fairloc Hub - tm-	1	12.73	17.4	14.29	15.88
		<i>0.252</i>	<i>0.188</i>				<i>0.501</i>	<i>0.685</i>	<i>0.563</i>	<i>0.625</i>
# P-020G-020-060FF-AL-G-048	20	6.4	4.763	Aluminium Alloy - Clear Anodised	Set Screw	2	12.73	17.4	15.88	9.25
		<i>0.252</i>	<i>0.188</i>				<i>0.501</i>	<i>0.685</i>	<i>0.625</i>	<i>0.364</i>
P-020G-020-060FH-AL-FL-050	20	6.4	5.000	Aluminium Alloy - Clear Anodised	Fairloc Hub - tm-	1	12.73	17.4	14.30	15.90
		<i>0.252</i>	<i>0.197</i>				<i>0.501</i>	<i>0.685</i>	<i>0.563</i>	<i>0.626</i>
# P-020G-020-060FH-AL-G-060	20	6.4	6.000	Aluminium Alloy - Clear Anodised	Set Screw	1	12.73	17.4	14.30	17.40
		<i>0.252</i>	<i>0.236</i>				<i>0.501</i>	<i>0.685</i>	<i>0.563</i>	<i>0.685</i>
P-020G-020-060FH-AL-G-064	20	6.4	6.350	Aluminium Alloy - Clear Anodised	Set Screw	1	12.73	17.4	14.29	17.40
		<i>0.252</i>	<i>0.250</i>				<i>0.501</i>	<i>0.685</i>	<i>0.563</i>	<i>0.685</i>
P-020G-021-060FF-AL-G-040	21	6.4	4.000	Aluminium Alloy - Clear Anodised	Set Screw	2	13.36	18.0	15.90	9.90
		<i>0.252</i>	<i>0.157</i>				<i>0.526</i>	<i>0.709</i>	<i>0.626</i>	<i>0.390</i>

Indicates item not stocked at time of printing - Please enquire for lead time

Page 8 of 29

E&OE Pricing and all details subject to change without notice - Copyright Miniature Bearings Australia Pty Ltd

MBA Size Listings are a guide to sizes only and must not be solely relied on for critical design information.

Pulleys - Timing - 2.000mm Pitch - GT - 6mm Wide - Aluminium

Part Number	Teeth	Max Belt Width mm	Bore (d) mm	Material	Locking Type	Type (See Diagram)	Pitch Diameter (PD) mm	Flange Diameter (FD) mm	Overall Length (OL) mm	Hub Diameter (HD) mm
		<i>inches</i>	<i>inches</i>				<i>inches</i>	<i>inches</i>	<i>inches</i>	<i>inches</i>
# P-020G-021-060FF-AL-G-048	21	6.4	4.763	Aluminium Alloy - Clear Anodised	Set Screw	2	13.36	18.3	15.88	9.96
		<i>0.252</i>	<i>0.188</i>				<i>0.526</i>	<i>0.720</i>	<i>0.625</i>	<i>0.392</i>
# P-020G-021-060FH-AL-G-060	21	6.4	6.000	Aluminium Alloy - Clear Anodised	Set Screw	1	13.36	18.0	14.30	18.80
		<i>0.252</i>	<i>0.236</i>				<i>0.526</i>	<i>0.709</i>	<i>0.563</i>	<i>0.740</i>
# P-020G-021-060FH-AL-G-064	21	6.4	6.350	Aluminium Alloy - Clear Anodised	Set Screw	1	13.36	18.3	14.29	18.34
		<i>0.252</i>	<i>0.250</i>				<i>0.526</i>	<i>0.720</i>	<i>0.563</i>	<i>0.722</i>
P-020G-022-060FF-AL-G-040	22	6.4	4.000	Aluminium Alloy - Clear Anodised	Set Screw	2	14.00	18.8	15.90	9.90
		<i>0.252</i>	<i>0.157</i>				<i>0.551</i>	<i>0.740</i>	<i>0.626</i>	<i>0.390</i>
# P-020G-022-060FF-AL-G-048	22	6.4	4.763	Aluminium Alloy - Clear Anodised	Set Screw	2	14.00	18.8	15.88	9.96
		<i>0.252</i>	<i>0.188</i>				<i>0.551</i>	<i>0.740</i>	<i>0.625</i>	<i>0.392</i>
# P-020G-022-060FH-AL-FL-048	22	6.4	4.763	Aluminium Alloy - Clear Anodised	Fairloc Hub - tm-	1	14.00	18.8	14.29	15.88
		<i>0.252</i>	<i>0.188</i>				<i>0.551</i>	<i>0.740</i>	<i>0.563</i>	<i>0.625</i>
# P-020G-022-060FH-AL-FL-050	22	6.4	5.000	Aluminium Alloy - Clear Anodised	Fairloc Hub - tm-	1	14.00	18.8	14.30	15.90
		<i>0.252</i>	<i>0.197</i>				<i>0.551</i>	<i>0.740</i>	<i>0.563</i>	<i>0.626</i>

Indicates item not stocked at time of printing - Please enquire for lead time

Page 9 of 29

E&OE Pricing and all details subject to change without notice - Copyright Miniature Bearings Australia Pty Ltd
MBA Size Listings are a guide to sizes only and must not be solely relied on for critical design information.

Pulleys - Timing - 2.000mm Pitch - GT - 6mm Wide - Aluminium

Part Number	Teeth	Max Belt Width mm	Bore (d) mm	Material	Locking Type	Type (See Diagram)	Pitch Diameter (PD) mm	Flange Diameter (FD) mm	Overall Length (OL) mm	Hub Diameter (HD) mm
		<i>inches</i>	<i>inches</i>				<i>inches</i>	<i>inches</i>	<i>inches</i>	<i>inches</i>
# P-020G-022-060FH-AL-G-060	22	6.4	6.000	Aluminium Alloy - Clear Anodised	Set Screw	1	14.00	18.8	14.30	18.80
		<i>0.252</i>	<i>0.236</i>				<i>0.551</i>	<i>0.740</i>	<i>0.563</i>	<i>0.740</i>
# P-020G-022-060FH-AL-G-064	22	6.4	6.350	Aluminium Alloy - Clear Anodised	Set Screw	1	14.00	18.8	14.29	18.80
		<i>0.252</i>	<i>0.250</i>				<i>0.551</i>	<i>0.740</i>	<i>0.563</i>	<i>0.740</i>
P-020G-024-060FF-AL-G-060	24	6.4	6.000	Aluminium Alloy - Clear Anodised	Set Screw	2	15.27	20.1	17.40	11.20
		<i>0.252</i>	<i>0.236</i>				<i>0.601</i>	<i>0.791</i>	<i>0.685</i>	<i>0.441</i>
# P-020G-024-060FH-AL-FL-060	24	6.4	6.000	Aluminium Alloy - Clear Anodised	Fairloc Hub - tm-	1	15.27	20.1	17.50	15.90
		<i>0.252</i>	<i>0.236</i>				<i>0.601</i>	<i>0.791</i>	<i>0.689</i>	<i>0.626</i>
# P-020G-024-060FF-AL-G-064	24	6.4	6.350	Aluminium Alloy - Clear Anodised	Set Screw	2	15.27	20.7	17.46	11.23
		<i>0.252</i>	<i>0.250</i>				<i>0.601</i>	<i>0.815</i>	<i>0.687</i>	<i>0.442</i>
# P-020G-024-060FH-AL-FL-064	24	6.4	6.350	Aluminium Alloy - Clear Anodised	Fairloc Hub - tm-	1	15.27	20.7	17.46	15.88
		<i>0.252</i>	<i>0.250</i>				<i>0.601</i>	<i>0.815</i>	<i>0.687</i>	<i>0.625</i>
P-020G-025-060FF-AL-G-060	25	6.4	6.000	Aluminium Alloy - Clear Anodised	Set Screw	2	15.91	20.7	17.40	11.90
		<i>0.252</i>	<i>0.236</i>				<i>0.626</i>	<i>0.815</i>	<i>0.685</i>	<i>0.469</i>

Indicates item not stocked at time of printing - Please enquire for lead time

Page 10 of 29

E&OE Pricing and all details subject to change without notice - Copyright Miniature Bearings Australia Pty Ltd

MBA Size Listings are a guide to sizes only and must not be solely relied on for critical design information.

Pulleys - Timing - 2.000mm Pitch - GT - 6mm Wide - Aluminium

Part Number	Teeth	Max Belt Width mm	Bore (d) mm	Material	Locking Type	Type (See Diagram)	Pitch Diameter (PD) mm	Flange Diameter (FD) mm	Overall Length (OL) mm	Hub Diameter (HD) mm
		<i>inches</i>	<i>inches</i>				<i>inches</i>	<i>inches</i>	<i>inches</i>	<i>inches</i>
# P-020G-025-060FH-AL-FL-060	25	6.4	6.000	Aluminium Alloy - Clear Anodised	Fairloc Hub - tm-	1	15.91	20.7	17.50	15.90
		<i>0.252</i>	<i>0.236</i>				<i>0.626</i>	<i>0.815</i>	<i>0.689</i>	<i>0.626</i>
P-020G-025-060FF-AL-G-064	25	6.4	6.350	Aluminium Alloy - Clear Anodised	Set Screw	2	15.91	20.7	17.46	11.89
		<i>0.252</i>	<i>0.250</i>				<i>0.626</i>	<i>0.815</i>	<i>0.687</i>	<i>0.468</i>
# P-020G-025-060FH-AL-FL-064	25	6.4	6.350	Aluminium Alloy - Clear Anodised	Fairloc Hub - tm-	1	15.91	20.7	17.46	15.88
		<i>0.252</i>	<i>0.250</i>				<i>0.626</i>	<i>0.815</i>	<i>0.687</i>	<i>0.625</i>
# P-020G-026-060FF-AL-G-060	26	6.4	6.000	Aluminium Alloy - Clear Anodised	Set Screw	2	16.55	21.3	17.40	12.40
		<i>0.252</i>	<i>0.236</i>				<i>0.652</i>	<i>0.839</i>	<i>0.685</i>	<i>0.488</i>
# P-020G-026-060FF-AL-G-064	26	6.4	6.350	Aluminium Alloy - Clear Anodised	Set Screw	2	16.55	21.3	17.46	12.45
		<i>0.252</i>	<i>0.250</i>				<i>0.652</i>	<i>0.839</i>	<i>0.687</i>	<i>0.490</i>
# P-020G-027-060FF-AL-CL-030	27	6.4	3.000	Aluminium Alloy - Clear Anodised	Cap Screw Clamp	2	17	22	16	10
		<i>0.252</i>	<i>0.118</i>				<i>0.669</i>	<i>0.866</i>	<i>0.630</i>	<i>0.394</i>
# P-020G-028-060FF-AL-CL-030	28	6.4	3.000	Aluminium Alloy - Clear Anodised	Cap Screw Clamp	2	18	23	16	10
		<i>0.252</i>	<i>0.118</i>				<i>0.709</i>	<i>0.906</i>	<i>0.630</i>	<i>0.394</i>

Indicates item not stocked at time of printing - Please enquire for lead time

Page 11 of 29

E&OE Pricing and all details subject to change without notice - Copyright Miniature Bearings Australia Pty Ltd

MBA Size Listings are a guide to sizes only and must not be solely relied on for critical design information.

Pulleys - Timing - 2.000mm Pitch - GT - 6mm Wide - Aluminium

Part Number	Teeth	Max Belt Width mm	Bore (d) mm	Material	Locking Type	Type (See Diagram)	Pitch Diameter (PD) mm	Flange Diameter (FD) mm	Overall Length (OL) mm	Hub Diameter (HD) mm
		<i>inches</i>	<i>inches</i>				<i>inches</i>	<i>inches</i>	<i>inches</i>	<i>inches</i>
# P-020G-028-060FH-AL-FL-060	28	6.4	6.000	Aluminium Alloy - Clear Anodised	Fairloc Hub - tm-	1	17.82	22.7	17.50	15.90
		<i>0.252</i>	<i>0.236</i>				<i>0.702</i>	<i>0.894</i>	<i>0.689</i>	<i>0.626</i>
# P-020G-028-060FF-AL-G-060	28	6.4	6.000	Aluminium Alloy - Clear Anodised	Set Screw	2	17.82	22.7	17.40	12.50
		<i>0.252</i>	<i>0.236</i>				<i>0.702</i>	<i>0.894</i>	<i>0.685</i>	<i>0.492</i>
# P-020G-028-060FF-AL-G-064	28	6.4	6.350	Aluminium Alloy - Clear Anodised	Set Screw	2	17.82	22.7	17.46	12.55
		<i>0.252</i>	<i>0.250</i>				<i>0.702</i>	<i>0.894</i>	<i>0.687</i>	<i>0.494</i>
# P-020G-028-060FH-AL-FL-064	28	6.4	6.350	Aluminium Alloy - Clear Anodised	Fairloc Hub - tm-	1	17.82	22.7	17.46	15.88
		<i>0.252</i>	<i>0.250</i>				<i>0.702</i>	<i>0.894</i>	<i>0.687</i>	<i>0.625</i>
# P-020G-029-060FF-AL-CL-030	29	6.4	3.000	Aluminium Alloy - Clear Anodised	Cap Screw Clamp	2	19	23	16	10
		<i>0.252</i>	<i>0.118</i>				<i>0.748</i>	<i>0.906</i>	<i>0.630</i>	<i>0.394</i>
# P-020G-030-060FF-AL-CL-030	30	6.4	3.000	Aluminium Alloy - Clear Anodised	Cap Screw Clamp	2	19	24	17	12
		<i>0.252</i>	<i>0.118</i>				<i>0.748</i>	<i>0.945</i>	<i>0.669</i>	<i>0.472</i>
# P-020G-030-060FF-AL-CL-040	30	6.4	4.000	Aluminium Alloy - Clear Anodised	Cap Screw Clamp	2	19	24	17	12
		<i>0.252</i>	<i>0.157</i>				<i>0.748</i>	<i>0.945</i>	<i>0.669</i>	<i>0.472</i>

Indicates item not stocked at time of printing - Please enquire for lead time

Page 12 of 29

E&OE Pricing and all details subject to change without notice - Copyright Miniature Bearings Australia Pty Ltd

MBA Size Listings are a guide to sizes only and must not be solely relied on for critical design information.

Pulleys - Timing - 2.000mm Pitch - GT - 6mm Wide - Aluminium

Part Number	Teeth	Max Belt Width mm	Bore (d) mm	Material	Locking Type	Type (See Diagram)	Pitch Diameter (PD) mm	Flange Diameter (FD) mm	Overall Length (OL) mm	Hub Diameter (HD) mm
		<i>inches</i>	<i>inches</i>				<i>inches</i>	<i>inches</i>	<i>inches</i>	<i>inches</i>
# P-020G-030-060FF-AL-CL-050	30	6.4	5.000	Aluminium Alloy - Clear Anodised	Cap Screw Clamp	2	19	24	17	12
		<i>0.252</i>	<i>0.197</i>				<i>0.748</i>	<i>0.945</i>	<i>0.669</i>	<i>0.472</i>
P-020G-030-060FF-AL-G-060	30	6.4	6.000	Aluminium Alloy - Clear Anodised	Set Screw	2	19.09	24.0	17.40	13.90
		<i>0.252</i>	<i>0.236</i>				<i>0.752</i>	<i>0.945</i>	<i>0.685</i>	<i>0.547</i>
# P-020G-030-060FH-AL-FL-060	30	6.4	6.000	Aluminium Alloy - Clear Anodised	Fairloc Hub - tm-	1	19.09	24.0	17.50	15.90
		<i>0.252</i>	<i>0.236</i>				<i>0.752</i>	<i>0.945</i>	<i>0.689</i>	<i>0.626</i>
# P-020G-030-060FH-AL-FL-064	30	6.4	6.350	Aluminium Alloy - Clear Anodised	Fairloc Hub - tm-	1	19.09	24.3	17.46	15.88
		<i>0.252</i>	<i>0.250</i>				<i>0.752</i>	<i>0.957</i>	<i>0.687</i>	<i>0.625</i>
# P-020G-030-060FF-AL-G-064	30	6.4	6.350	Aluminium Alloy - Clear Anodised	Set Screw	2	19.09	24.3	17.46	13.87
		<i>0.252</i>	<i>0.250</i>				<i>0.752</i>	<i>0.957</i>	<i>0.687</i>	<i>0.546</i>
# P-020G-032-060FF-AL-CL-030	32	6.4	3.000	Aluminium Alloy - Clear Anodised	Cap Screw Clamp	2	20	25	17	12
		<i>0.252</i>	<i>0.118</i>				<i>0.787</i>	<i>0.984</i>	<i>0.669</i>	<i>0.472</i>
# P-020G-032-060FF-AL-CL-040	32	6.4	4.000	Aluminium Alloy - Clear Anodised	Cap Screw Clamp	2	20	25	17	12
		<i>0.252</i>	<i>0.157</i>				<i>0.787</i>	<i>0.984</i>	<i>0.669</i>	<i>0.472</i>

Indicates item not stocked at time of printing - Please enquire for lead time

Page 13 of 29

E&OE Pricing and all details subject to change without notice - Copyright Miniature Bearings Australia Pty Ltd
MBA Size Listings are a guide to sizes only and must not be solely relied on for critical design information.

Pulleys - Timing - 2.000mm Pitch - GT - 6mm Wide - Aluminium

Part Number	Teeth	Max Belt Width mm	Bore (d) mm	Material	Locking Type	Type (See Diagram)	Pitch Diameter (PD) mm	Flange Diameter (FD) mm	Overall Length (OL) mm	Hub Diameter (HD) mm
		<i>inches</i>	<i>inches</i>				<i>inches</i>	<i>inches</i>	<i>inches</i>	<i>inches</i>
# P-020G-032-060FF-AL-CL-050	32	6.4	5.000	Aluminium Alloy - Clear Anodised	Cap Screw Clamp	2	20	25	17	12
		<i>0.252</i>	<i>0.197</i>				<i>0.787</i>	<i>0.984</i>	<i>0.669</i>	<i>0.472</i>
# P-020G-032-060FF-AL-G-060	32	6.4	6.000	Aluminium Alloy - Clear Anodised	Set Screw	2	20.36	25.4	17.40	15.20
		<i>0.252</i>	<i>0.236</i>				<i>0.802</i>	<i>1.000</i>	<i>0.685</i>	<i>0.598</i>
P-020G-032-060FH-AL-FL-060	32	6.4	6.000	Aluminium Alloy - Clear Anodised	Fairloc Hub - tm-	1	20.36	25.4	17.50	15.90
		<i>0.252</i>	<i>0.236</i>				<i>0.802</i>	<i>1.000</i>	<i>0.689</i>	<i>0.626</i>
# P-020G-032-060FF-AL-G-064	32	6.4	6.350	Aluminium Alloy - Clear Anodised	Set Screw	2	20.36	25.4	17.46	15.19
		<i>0.252</i>	<i>0.250</i>				<i>0.802</i>	<i>1.000</i>	<i>0.687</i>	<i>0.598</i>
# P-020G-032-060FH-AL-FL-064	32	6.4	6.350	Aluminium Alloy - Clear Anodised	Fairloc Hub - tm-	1	20.36	25.4	17.46	15.88
		<i>0.252</i>	<i>0.250</i>				<i>0.802</i>	<i>1.000</i>	<i>0.687</i>	<i>0.625</i>
# P-020G-034-060FF-AL-CL-030	34	6.4	3.000	Aluminium Alloy - Clear Anodised	Cap Screw Clamp	2	22	27	17	14
		<i>0.252</i>	<i>0.118</i>				<i>0.866</i>	<i>1.063</i>	<i>0.669</i>	<i>0.551</i>
# P-020G-034-060FF-AL-CL-040	34	6.4	4.000	Aluminium Alloy - Clear Anodised	Cap Screw Clamp	2	22	27	17	14
		<i>0.252</i>	<i>0.157</i>				<i>0.866</i>	<i>1.063</i>	<i>0.669</i>	<i>0.551</i>

Indicates item not stocked at time of printing - Please enquire for lead time

Page 14 of 29

E&OE Pricing and all details subject to change without notice - Copyright Miniature Bearings Australia Pty Ltd

MBA Size Listings are a guide to sizes only and must not be solely relied on for critical design information.

Pulleys - Timing - 2.000mm Pitch - GT - 6mm Wide - Aluminium

Part Number	Teeth	Max Belt Width mm	Bore (d) mm	Material	Locking Type	Type (See Diagram)	Pitch Diameter (PD) mm	Flange Diameter (FD) mm	Overall Length (OL) mm	Hub Diameter (HD) mm
		<i>inches</i>	<i>inches</i>				<i>inches</i>	<i>inches</i>	<i>inches</i>	<i>inches</i>
# P-020G-034-060FF-AL-CL-050	34	6.4	5.000	Aluminium Alloy - Clear Anodised	Cap Screw Clamp	2	22	27	17	14
		<i>0.252</i>	<i>0.197</i>				<i>0.866</i>	<i>1.063</i>	<i>0.669</i>	<i>0.551</i>
# P-020G-034-060FF-AL-CL-060	34	6.4	6.000	Aluminium Alloy - Clear Anodised	Cap Screw Clamp	2	22	27	17	14
		<i>0.252</i>	<i>0.236</i>				<i>0.866</i>	<i>1.063</i>	<i>0.669</i>	<i>0.551</i>
# P-020G-036-060FF-AL-CL-030	36	6.4	3.000	Aluminium Alloy - Clear Anodised	Cap Screw Clamp	2	23	27	17	14
		<i>0.252</i>	<i>0.118</i>				<i>0.906</i>	<i>1.063</i>	<i>0.669</i>	<i>0.551</i>
# P-020G-036-060FF-AL-CL-040	36	6.4	4.000	Aluminium Alloy - Clear Anodised	Cap Screw Clamp	2	23	27	17	14
		<i>0.252</i>	<i>0.157</i>				<i>0.906</i>	<i>1.063</i>	<i>0.669</i>	<i>0.551</i>
# P-020G-036-060FF-AL-CL-050	36	6.4	5.000	Aluminium Alloy - Clear Anodised	Cap Screw Clamp	2	23	27	17	14
		<i>0.252</i>	<i>0.197</i>				<i>0.906</i>	<i>1.063</i>	<i>0.669</i>	<i>0.551</i>
# P-020G-036-060FF-AL-G-060	36	6.4	6.000	Aluminium Alloy - Clear Anodised	Set Screw	2	22.91	28.1	17.40	17.20
		<i>0.252</i>	<i>0.236</i>				<i>0.902</i>	<i>1.106</i>	<i>0.685</i>	<i>0.677</i>
# P-020G-036-060FF-AL-CL-060	36	6.4	6.000	Aluminium Alloy - Clear Anodised	Cap Screw Clamp	2	23	27	17	14
		<i>0.252</i>	<i>0.236</i>				<i>0.906</i>	<i>1.063</i>	<i>0.669</i>	<i>0.551</i>

Indicates item not stocked at time of printing - Please enquire for lead time

Page 15 of 29

E&OE Pricing and all details subject to change without notice - Copyright Miniature Bearings Australia Pty Ltd
MBA Size Listings are a guide to sizes only and must not be solely relied on for critical design information.

Pulleys - Timing - 2.000mm Pitch - GT - 6mm Wide - Aluminium

Part Number	Teeth	Max Belt Width mm	Bore (d) mm	Material	Locking Type	Type (See Diagram)	Pitch Diameter (PD) mm	Flange Diameter (FD) mm	Overall Length (OL) mm	Hub Diameter (HD) mm
		<i>inches</i>	<i>inches</i>				<i>inches</i>	<i>inches</i>	<i>inches</i>	<i>inches</i>
P-020G-036-060FF-AL-FL-060	36	6.4	6.000	Aluminium Alloy - Clear Anodised	Fairloc Hub - tm-	2	22.91	28.1	17.50	15.90
		<i>0.252</i>	<i>0.236</i>				<i>0.902</i>	<i>1.106</i>	<i>0.689</i>	<i>0.626</i>
# P-020G-036-060FF-AL-G-064	36	6.4	6.350	Aluminium Alloy - Clear Anodised	Set Screw	2	22.91	28.7	18.26	17.17
		<i>0.252</i>	<i>0.250</i>				<i>0.902</i>	<i>1.130</i>	<i>0.719</i>	<i>0.676</i>
# P-020G-036-060FF-AL-FL-064	36	6.4	6.350	Aluminium Alloy - Clear Anodised	Fairloc Hub - tm-	2	22.91	28.7	17.46	15.88
		<i>0.252</i>	<i>0.250</i>				<i>0.902</i>	<i>1.130</i>	<i>0.687</i>	<i>0.625</i>
# P-020G-038-060FF-AL-CL-030	38	6.4	3.000	Aluminium Alloy - Clear Anodised	Cap Screw Clamp	2	24	29	18	18
		<i>0.252</i>	<i>0.118</i>				<i>0.945</i>	<i>1.142</i>	<i>0.709</i>	<i>0.709</i>
# P-020G-038-060FF-AL-CL-040	38	6.4	4.000	Aluminium Alloy - Clear Anodised	Cap Screw Clamp	2	24	29	18	18
		<i>0.252</i>	<i>0.157</i>				<i>0.945</i>	<i>1.142</i>	<i>0.709</i>	<i>0.709</i>
# P-020G-038-060FF-AL-CL-050	38	6.4	5.000	Aluminium Alloy - Clear Anodised	Cap Screw Clamp	2	24	29	18	18
		<i>0.252</i>	<i>0.197</i>				<i>0.945</i>	<i>1.142</i>	<i>0.709</i>	<i>0.709</i>
# P-020G-038-060FF-AL-CL-060	38	6.4	6.000	Aluminium Alloy - Clear Anodised	Cap Screw Clamp	2	24	29	18	18
		<i>0.252</i>	<i>0.236</i>				<i>0.945</i>	<i>1.142</i>	<i>0.709</i>	<i>0.709</i>

Indicates item not stocked at time of printing - Please enquire for lead time

Page 16 of 29

E&OE Pricing and all details subject to change without notice - Copyright Miniature Bearings Australia Pty Ltd
MBA Size Listings are a guide to sizes only and must not be solely relied on for critical design information.

Pulleys - Timing - 2.000mm Pitch - GT - 6mm Wide - Aluminium

Part Number	Teeth	Max Belt Width mm	Bore (d) mm	Material	Locking Type	Type (See Diagram)	Pitch Diameter (PD) mm	Flange Diameter (FD) mm	Overall Length (OL) mm	Hub Diameter (HD) mm
		<i>inches</i>	<i>inches</i>				<i>inches</i>	<i>inches</i>	<i>inches</i>	<i>inches</i>
# P-020G-038-060FF-AL-CL-080	38	6.4	8.000	Aluminium Alloy - Clear Anodised	Cap Screw Clamp	2	24	29	18	18
		<i>0.252</i>	<i>0.315</i>				<i>0.945</i>	<i>1.142</i>	<i>0.709</i>	<i>0.709</i>
# P-020G-040-060FF-AL-CL-030	40	6.4	3.000	Aluminium Alloy - Clear Anodised	Cap Screw Clamp	2	26	30	18	18
		<i>0.252</i>	<i>0.118</i>				<i>1.024</i>	<i>1.181</i>	<i>0.709</i>	<i>0.709</i>
# P-020G-040-060FF-AL-CL-040	40	6.4	4.000	Aluminium Alloy - Clear Anodised	Cap Screw Clamp	2	26	30	18	18
		<i>0.252</i>	<i>0.157</i>				<i>1.024</i>	<i>1.181</i>	<i>0.709</i>	<i>0.709</i>
# P-020G-040-060FF-AL-CL-050	40	6.4	5.000	Aluminium Alloy - Clear Anodised	Cap Screw Clamp	2	26	30	18	18
		<i>0.252</i>	<i>0.197</i>				<i>1.024</i>	<i>1.181</i>	<i>0.709</i>	<i>0.709</i>
# P-020G-040-060FF-AL-FL-060	40	6.4	6.000	Aluminium Alloy - Clear Anodised	Fairloc Hub - tm-	2	25.45	30.7	18.30	15.90
		<i>0.252</i>	<i>0.236</i>				<i>1.002</i>	<i>1.209</i>	<i>0.720</i>	<i>0.626</i>
# P-020G-040-060FF-AL-G-060	40	6.4	6.000	Aluminium Alloy - Clear Anodised	Set Screw	2	25.45	30.7	18.30	19.20
		<i>0.252</i>	<i>0.236</i>				<i>1.002</i>	<i>1.209</i>	<i>0.720</i>	<i>0.756</i>
# P-020G-040-060FF-AL-CL-060	40	6.4	6.000	Aluminium Alloy - Clear Anodised	Cap Screw Clamp	2	26	30	18	18
		<i>0.252</i>	<i>0.236</i>				<i>1.024</i>	<i>1.181</i>	<i>0.709</i>	<i>0.709</i>

Indicates item not stocked at time of printing - Please enquire for lead time

Page 17 of 29

E&OE Pricing and all details subject to change without notice - Copyright Miniature Bearings Australia Pty Ltd
MBA Size Listings are a guide to sizes only and must not be solely relied on for critical design information.

Pulleys - Timing - 2.000mm Pitch - GT - 6mm Wide - Aluminium

Part Number	Teeth	Max Belt Width mm	Bore (d) mm	Material	Locking Type	Type (See Diagram)	Pitch Diameter (PD) mm	Flange Diameter (FD) mm	Overall Length (OL) mm	Hub Diameter (HD) mm
		<i>inches</i>	<i>inches</i>				<i>inches</i>	<i>inches</i>	<i>inches</i>	<i>inches</i>
# P-020G-040-060FF-AL-FL-064	40	6.4	6.350	Aluminium Alloy - Clear Anodised	Fairloc Hub - tm-	2	25.45	30.7	18.26	15.88
		<i>0.252</i>	<i>0.250</i>				<i>1.002</i>	<i>1.209</i>	<i>0.719</i>	<i>0.625</i>
P-020G-040-060FF-AL-G-064	40	6.4	6.350	Aluminium Alloy - Clear Anodised	Set Screw	2	25.45	30.7	18.26	19.15
		<i>0.252</i>	<i>0.250</i>				<i>1.002</i>	<i>1.209</i>	<i>0.719</i>	<i>0.754</i>
# P-020G-040-060FF-AL-CL-080	40	6.4	8.000	Aluminium Alloy - Clear Anodised	Cap Screw Clamp	2	26	30	18	18
		<i>0.252</i>	<i>0.315</i>				<i>1.024</i>	<i>1.181</i>	<i>0.709</i>	<i>0.709</i>
P-020G-042-060FF-AL-G-060	42	6.4	6.000	Aluminium Alloy - Clear Anodised	Set Screw	2	26.73	32.0	18.30	20.50
		<i>0.252</i>	<i>0.236</i>				<i>1.052</i>	<i>1.260</i>	<i>0.720</i>	<i>0.807</i>
# P-020G-042-060FF-AL-G-064	42	6.4	6.350	Aluminium Alloy - Clear Anodised	Set Screw	2	26.73	32.4	18.26	20.47
		<i>0.252</i>	<i>0.250</i>				<i>1.052</i>	<i>1.276</i>	<i>0.719</i>	<i>0.806</i>
# P-020G-044-060FF-AL-CL-050	44	6.4	5.000	Aluminium Alloy - Clear Anodised	Cap Screw Clamp	2	28	32	18	20
		<i>0.252</i>	<i>0.197</i>				<i>1.102</i>	<i>1.260</i>	<i>0.709</i>	<i>0.787</i>
# P-020G-044-060FF-AL-G-060	44	6.4	6.000	Aluminium Alloy - Clear Anodised	Set Screw	2	28.00	33.4	18.30	21.80
		<i>0.252</i>	<i>0.236</i>				<i>1.102</i>	<i>1.315</i>	<i>0.720</i>	<i>0.858</i>

Indicates item not stocked at time of printing - Please enquire for lead time

Page 18 of 29

E&OE Pricing and all details subject to change without notice - Copyright Miniature Bearings Australia Pty Ltd

MBA Size Listings are a guide to sizes only and must not be solely relied on for critical design information.

Pulleys - Timing - 2.000mm Pitch - GT - 6mm Wide - Aluminium

Part Number	Teeth	Max Belt Width mm	Bore (d) mm	Material	Locking Type	Type (See Diagram)	Pitch Diameter (PD) mm	Flange Diameter (FD) mm	Overall Length (OL) mm	Hub Diameter (HD) mm
		<i>inches</i>	<i>inches</i>				<i>inches</i>	<i>inches</i>	<i>inches</i>	<i>inches</i>
# P-020G-044-060FF-AL-CL-060	44	6.4	6.000	Aluminium Alloy - Clear Anodised	Cap Screw Clamp	2	28	32	18	20
		<i>0.252</i>	<i>0.236</i>				<i>1.102</i>	<i>1.260</i>	<i>0.709</i>	<i>0.787</i>
# P-020G-044-060FF-AL-G-064	44	6.4	6.350	Aluminium Alloy - Clear Anodised	Set Screw	2	28.00	33.4	18.26	21.79
		<i>0.252</i>	<i>0.250</i>				<i>1.102</i>	<i>1.315</i>	<i>0.719</i>	<i>0.858</i>
# P-020G-044-060FF-AL-CL-080	44	6.4	8.000	Aluminium Alloy - Clear Anodised	Cap Screw Clamp	2	28	32	18	20
		<i>0.252</i>	<i>0.315</i>				<i>1.102</i>	<i>1.260</i>	<i>0.709</i>	<i>0.787</i>
# P-020G-044-060FF-AL-CL-100	44	6.4	10.000	Aluminium Alloy - Clear Anodised	Cap Screw Clamp	2	28	32	18	20
		<i>0.252</i>	<i>0.394</i>				<i>1.102</i>	<i>1.260</i>	<i>0.709</i>	<i>0.787</i>
P-020G-045-060FF-AL-G-050	45	6.4	5.000	Aluminium Alloy - Clear Anodised	Set Screw	2	28.64	34.4	18.26	22.86
		<i>0.252</i>	<i>0.197</i>				<i>1.128</i>	<i>1.354</i>	<i>0.719</i>	<i>0.900</i>
P-020G-045-060FF-AL-G-060	45	6.4	6.000	Aluminium Alloy - Clear Anodised	Set Screw	2	28.64	34.0	18.30	22.90
		<i>0.252</i>	<i>0.236</i>				<i>1.128</i>	<i>1.339</i>	<i>0.720</i>	<i>0.902</i>
# P-020G-045-060FF-AL-FL-060	45	6.4	6.000	Aluminium Alloy - Clear Anodised	Fairloc Hub - tm-	2	28.64	34.0	18.30	15.90
		<i>0.252</i>	<i>0.236</i>				<i>1.128</i>	<i>1.339</i>	<i>0.720</i>	<i>0.626</i>

Indicates item not stocked at time of printing - Please enquire for lead time

Page 19 of 29

E&OE Pricing and all details subject to change without notice - Copyright Miniature Bearings Australia Pty Ltd
MBA Size Listings are a guide to sizes only and must not be solely relied on for critical design information.

Pulleys - Timing - 2.000mm Pitch - GT - 6mm Wide - Aluminium

Part Number	Teeth	Max Belt Width mm	Bore (d) mm	Material	Locking Type	Type (See Diagram)	Pitch Diameter (PD) mm	Flange Diameter (FD) mm	Overall Length (OL) mm	Hub Diameter (HD) mm
		<i>inches</i>	<i>inches</i>				<i>inches</i>	<i>inches</i>	<i>inches</i>	<i>inches</i>
P-020G-045-060FF-AL-G-064	45	6.4	6.350	Aluminium Alloy - Clear Anodised	Set Screw	2	28.64	34.4	18.26	22.86
		<i>0.252</i>	<i>0.250</i>				<i>1.128</i>	<i>1.354</i>	<i>0.719</i>	<i>0.900</i>
P-020G-045-060FF-AL-FL-064	45	6.4	6.350	Aluminium Alloy - Clear Anodised	Fairloc Hub - tm-	2	28.64	34.4	18.26	15.88
		<i>0.252</i>	<i>0.250</i>				<i>1.128</i>	<i>1.354</i>	<i>0.719</i>	<i>0.625</i>
# P-020G-048-060FF-AL-CL-050	48	6.4	5.000	Aluminium Alloy - Clear Anodised	Cap Screw Clamp	2	31	35	18	20
		<i>0.252</i>	<i>0.197</i>				<i>1.220</i>	<i>1.378</i>	<i>0.709</i>	<i>0.787</i>
# P-020G-048-060FF-AL-G-060	48	6.4	6.000	Aluminium Alloy - Clear Anodised	Set Screw	2	30.55	36.1	18.30	23.80
		<i>0.252</i>	<i>0.236</i>				<i>1.203</i>	<i>1.421</i>	<i>0.720</i>	<i>0.937</i>
# P-020G-048-060FF-AL-FL-060	48	6.4	6.000	Aluminium Alloy - Clear Anodised	Fairloc Hub - tm-	2	30.55	36.1	18.30	15.90
		<i>0.252</i>	<i>0.236</i>				<i>1.203</i>	<i>1.421</i>	<i>0.720</i>	<i>0.626</i>
# P-020G-048-060FF-AL-CL-060	48	6.4	6.000	Aluminium Alloy - Clear Anodised	Cap Screw Clamp	2	31	35	18	20
		<i>0.252</i>	<i>0.236</i>				<i>1.220</i>	<i>1.378</i>	<i>0.709</i>	<i>0.787</i>
# P-020G-048-060FF-AL-FL-064	48	6.4	6.350	Aluminium Alloy - Clear Anodised	Fairloc Hub - tm-	2	30.55	36.7	18.26	15.88
		<i>0.252</i>	<i>0.250</i>				<i>1.203</i>	<i>1.445</i>	<i>0.719</i>	<i>0.625</i>

Indicates item not stocked at time of printing - Please enquire for lead time

Page 20 of 29

E&OE Pricing and all details subject to change without notice - Copyright Miniature Bearings Australia Pty Ltd

MBA Size Listings are a guide to sizes only and must not be solely relied on for critical design information.

Pulleys - Timing - 2.000mm Pitch - GT - 6mm Wide - Aluminium

Part Number	Teeth	Max Belt Width mm	Bore (d) mm	Material	Locking Type	Type (See Diagram)	Pitch Diameter (PD) mm	Flange Diameter (FD) mm	Overall Length (OL) mm	Hub Diameter (HD) mm
		<i>inches</i>	<i>inches</i>				<i>inches</i>	<i>inches</i>	<i>inches</i>	<i>inches</i>
P-020G-048-060FF-AL-G-064	48	6.4	6.350	Aluminium Alloy - Clear Anodised	Set Screw	2	30.55	36.7	18.26	23.77
		<i>0.252</i>	<i>0.250</i>				<i>1.203</i>	<i>1.445</i>	<i>0.719</i>	<i>0.936</i>
# P-020G-048-060FF-AL-CL-080	48	6.4	8.000	Aluminium Alloy - Clear Anodised	Cap Screw Clamp	2	31	35	18	20
		<i>0.252</i>	<i>0.315</i>				<i>1.220</i>	<i>1.378</i>	<i>0.709</i>	<i>0.787</i>
# P-020G-048-060FF-AL-CL-100	48	6.4	10.000	Aluminium Alloy - Clear Anodised	Cap Screw Clamp	2	31	35	18	20
		<i>0.252</i>	<i>0.394</i>				<i>1.220</i>	<i>1.378</i>	<i>0.709</i>	<i>0.787</i>
# P-020G-050-060FF-AL-CL-050	50	6.4	5.000	Aluminium Alloy - Clear Anodised	Cap Screw Clamp	2	32	36	18	20
		<i>0.252</i>	<i>0.197</i>				<i>1.260</i>	<i>1.417</i>	<i>0.709</i>	<i>0.787</i>
# P-020G-050-060FF-AL-CL-060	50	6.4	6.000	Aluminium Alloy - Clear Anodised	Cap Screw Clamp	2	32	36	18	20
		<i>0.252</i>	<i>0.236</i>				<i>1.260</i>	<i>1.417</i>	<i>0.709</i>	<i>0.787</i>
# P-020G-050-060FF-AL-FL-060	50	6.4	6.000	Aluminium Alloy - Clear Anodised	Fairloc Hub - tm-	2	31.82	37.3	18.30	15.90
		<i>0.252</i>	<i>0.236</i>				<i>1.253</i>	<i>1.469</i>	<i>0.720</i>	<i>0.626</i>
P-020G-050-060FF-AL-G-060	50	6.4	6.000	Aluminium Alloy - Clear Anodised	Set Screw	2	31.82	37.3	18.30	23.80
		<i>0.252</i>	<i>0.236</i>				<i>1.253</i>	<i>1.469</i>	<i>0.720</i>	<i>0.937</i>

Indicates item not stocked at time of printing - Please enquire for lead time

Page 21 of 29

E&OE Pricing and all details subject to change without notice - Copyright Miniature Bearings Australia Pty Ltd

MBA Size Listings are a guide to sizes only and must not be solely relied on for critical design information.

Pulleys - Timing - 2.000mm Pitch - GT - 6mm Wide - Aluminium

Part Number	Teeth	Max Belt Width mm	Bore (d) mm	Material	Locking Type	Type (See Diagram)	Pitch Diameter (PD) mm	Flange Diameter (FD) mm	Overall Length (OL) mm	Hub Diameter (HD) mm
		<i>inches</i>	<i>inches</i>				<i>inches</i>	<i>inches</i>	<i>inches</i>	<i>inches</i>
# P-020G-050-060FF-AL-FL-064	50	6.4	6.350	Aluminium Alloy - Clear Anodised	Fairloc Hub - tm-	2	31.82	37.3	18.26	15.88
		<i>0.252</i>	<i>0.250</i>				<i>1.253</i>	<i>1.469</i>	<i>0.719</i>	<i>0.625</i>
P-020G-050-060FF-AL-G-064	50	6.4	6.350	Aluminium Alloy - Clear Anodised	Set Screw	2	31.82	37.3	18.26	23.77
		<i>0.252</i>	<i>0.250</i>				<i>1.253</i>	<i>1.469</i>	<i>0.719</i>	<i>0.936</i>
# P-020G-050-060FF-AL-CL-080	50	6.4	8.000	Aluminium Alloy - Clear Anodised	Cap Screw Clamp	2	32	36	18	20
		<i>0.252</i>	<i>0.315</i>				<i>1.260</i>	<i>1.417</i>	<i>0.709</i>	<i>0.787</i>
# P-020G-050-060FF-AL-CL-100	50	6.4	10.000	Aluminium Alloy - Clear Anodised	Cap Screw Clamp	2	32	36	18	20
		<i>0.252</i>	<i>0.394</i>				<i>1.260</i>	<i>1.417</i>	<i>0.709</i>	<i>0.787</i>
# P-020G-056-060FF-AL-G-060	56	6.4	6.000	Aluminium Alloy - Clear Anodised	Set Screw	2	35.64	40.0	18.30	26.20
		<i>0.252</i>	<i>0.236</i>				<i>1.403</i>	<i>1.575</i>	<i>0.720</i>	<i>1.031</i>
# P-020G-056-060FF-AL-G-064	56	6.4	6.350	Aluminium Alloy - Clear Anodised	Set Screw	2	35.64	40.5	18.26	26.16
		<i>0.252</i>	<i>0.250</i>				<i>1.403</i>	<i>1.594</i>	<i>0.719</i>	<i>1.030</i>
P-020G-060-060FF-AL-G-060	60	6.4	6.000	Aluminium Alloy - Clear Anodised	Set Screw	2	38.18	43.9	18.30	31.00
		<i>0.252</i>	<i>0.236</i>				<i>1.503</i>	<i>1.728</i>	<i>0.720</i>	<i>1.220</i>

Indicates item not stocked at time of printing - Please enquire for lead time

Page 22 of 29

E&OE Pricing and all details subject to change without notice - Copyright Miniature Bearings Australia Pty Ltd

MBA Size Listings are a guide to sizes only and must not be solely relied on for critical design information.

Pulleys - Timing - 2.000mm Pitch - GT - 6mm Wide - Aluminium

Part Number	Teeth	Max Belt Width mm	Bore (d) mm	Material	Locking Type	Type (See Diagram)	Pitch Diameter (PD) mm	Flange Diameter (FD) mm	Overall Length (OL) mm	Hub Diameter (HD) mm
		<i>inches</i>	<i>inches</i>				<i>inches</i>	<i>inches</i>	<i>inches</i>	<i>inches</i>
# P-020G-060-060P-AL-G-060	60	6.4	6.000	Aluminium Alloy - Clear Anodised	Set Screw	3	38.18	-	19.10	29.20
		<i>0.252</i>	<i>0.236</i>				<i>1.503</i>		<i>0.752</i>	<i>1.150</i>
# P-020G-060-060FF-AL-FL-060	60	6.4	6.000	Aluminium Alloy - Clear Anodised	Fairloc Hub - tm-	2	38.18	43.9	18.30	15.90
		<i>0.252</i>	<i>0.236</i>				<i>1.503</i>	<i>1.728</i>	<i>0.720</i>	<i>0.626</i>
# P-020G-060-060P-AL-FL-060	60	6.4	6.000	Aluminium Alloy - Clear Anodised	Fairloc Hub - tm-	3	38.18	-	19.10	19.10
		<i>0.252</i>	<i>0.236</i>				<i>1.503</i>		<i>0.752</i>	<i>0.752</i>
# P-020G-060-060P-AL-G-064	60	6.4	6.350	Aluminium Alloy - Clear Anodised	Set Screw	3	38.18	-	19.50	29.16
		<i>0.252</i>	<i>0.250</i>				<i>1.503</i>		<i>0.768</i>	<i>1.148</i>
# P-020G-060-060FF-AL-FL-064	60	6.4	6.350	Aluminium Alloy - Clear Anodised	Fairloc Hub - tm-	2	38.18	43.9	18.26	15.88
		<i>0.252</i>	<i>0.250</i>				<i>1.503</i>	<i>1.728</i>	<i>0.719</i>	<i>0.625</i>
# P-020G-060-060P-AL-FL-064	60	6.4	6.350	Aluminium Alloy - Clear Anodised	Fairloc Hub - tm-	3	38.18	-	19.50	19.50
		<i>0.252</i>	<i>0.250</i>				<i>1.503</i>		<i>0.768</i>	<i>0.768</i>
P-020G-060-060FF-AL-G-064	60	6.4	6.350	Aluminium Alloy - Clear Anodised	Set Screw	2	38.18	43.9	19.50	31.39
		<i>0.252</i>	<i>0.250</i>				<i>1.503</i>	<i>1.728</i>	<i>0.768</i>	<i>1.236</i>

Indicates item not stocked at time of printing - Please enquire for lead time

Page 23 of 29

E&OE Pricing and all details subject to change without notice - Copyright Miniature Bearings Australia Pty Ltd

MBA Size Listings are a guide to sizes only and must not be solely relied on for critical design information.

Pulleys - Timing - 2.000mm Pitch - GT - 6mm Wide - Aluminium

Part Number	Teeth	Max Belt Width mm	Bore (d) mm	Material	Locking Type	Type (See Diagram)	Pitch Diameter (PD) mm	Flange Diameter (FD) mm	Overall Length (OL) mm	Hub Diameter (HD) mm
		<i>inches</i>	<i>inches</i>				<i>inches</i>	<i>inches</i>	<i>inches</i>	<i>inches</i>
# P-020G-060-060FF-AL-CL-080	60	6.4	8.000	Aluminium Alloy - Clear Anodised	Cap Screw Clamp	2	38	42	21	30
		<i>0.252</i>	<i>0.315</i>				<i>1.496</i>	<i>1.654</i>	<i>0.827</i>	<i>1.181</i>
# P-020G-060-060FF-AL-CL-100	60	6.4	10.000	Aluminium Alloy - Clear Anodised	Cap Screw Clamp	2	38	42	21	30
		<i>0.252</i>	<i>0.394</i>				<i>1.496</i>	<i>1.654</i>	<i>0.827</i>	<i>1.181</i>
# P-020G-060-060FF-AL-CL-110	60	6.4	11.000	Aluminium Alloy - Clear Anodised	Cap Screw Clamp	2	38	42	21	30
		<i>0.252</i>	<i>0.433</i>				<i>1.496</i>	<i>1.654</i>	<i>0.827</i>	<i>1.181</i>
# P-020G-060-060FF-AL-CL-120	60	6.4	12.000	Aluminium Alloy - Clear Anodised	Cap Screw Clamp	2	38	42	21	30
		<i>0.252</i>	<i>0.472</i>				<i>1.496</i>	<i>1.654</i>	<i>0.827</i>	<i>1.181</i>
# P-020G-060-060FF-AL-CL-140	60	6.4	14.000	Aluminium Alloy - Clear Anodised	Cap Screw Clamp	2	38	42	21	30
		<i>0.252</i>	<i>0.551</i>				<i>1.496</i>	<i>1.654</i>	<i>0.827</i>	<i>1.181</i>
# P-020G-062-060P-AL-G-060	62	6.4	6.000	Aluminium Alloy - Clear Anodised	Set Screw	3	39.45	-	19.10	29.20
		<i>0.252</i>	<i>0.236</i>				<i>1.553</i>		<i>0.752</i>	<i>1.150</i>
# P-020G-062-060P-AL-G-064	62	6.4	6.350	Aluminium Alloy - Clear Anodised	Set Screw	3	39.45	-	19.50	29.16
		<i>0.252</i>	<i>0.250</i>				<i>1.553</i>		<i>0.768</i>	<i>1.148</i>

Indicates item not stocked at time of printing - Please enquire for lead time

Page 24 of 29

E&OE Pricing and all details subject to change without notice - Copyright Miniature Bearings Australia Pty Ltd

MBA Size Listings are a guide to sizes only and must not be solely relied on for critical design information.

Pulleys - Timing - 2.000mm Pitch - GT - 6mm Wide - Aluminium

Part Number	Teeth	Max Belt Width mm	Bore (d) mm	Material	Locking Type	Type (See Diagram)	Pitch Diameter (PD) mm	Flange Diameter (FD) mm	Overall Length (OL) mm	Hub Diameter (HD) mm
		<i>inches</i>	<i>inches</i>				<i>inches</i>	<i>inches</i>	<i>inches</i>	<i>inches</i>
P-020G-068-060P-AL-G-060	68	6.4	6.000	Aluminium Alloy - Clear Anodised	Set Screw	3	43.27	-	19.10	30.40
		<i>0.252</i>	<i>0.236</i>				<i>1.704</i>		<i>0.752</i>	<i>1.197</i>
# P-020G-068-060P-AL-G-064	68	6.4	6.350	Aluminium Alloy - Clear Anodised	Set Screw	3	43.27	-	19.50	30.35
		<i>0.252</i>	<i>0.250</i>				<i>1.704</i>		<i>0.768</i>	<i>1.195</i>
# P-020G-072-060P-AL-FL-060	72	6.4	6.000	Aluminium Alloy - Clear Anodised	Fairloc Hub - tm-	3	45.82	-	19.10	19.10
		<i>0.252</i>	<i>0.236</i>				<i>1.804</i>		<i>0.752</i>	<i>0.752</i>
# P-020G-072-060P-AL-G-060	72	6.4	6.000	Aluminium Alloy - Clear Anodised	Set Screw	3	45.82	-	19.10	30.40
		<i>0.252</i>	<i>0.236</i>				<i>1.804</i>		<i>0.752</i>	<i>1.197</i>
# P-020G-072-060P-AL-FL-064	72	6.4	6.350	Aluminium Alloy - Clear Anodised	Fairloc Hub - tm-	3	45.82	-	19.50	19.50
		<i>0.252</i>	<i>0.250</i>				<i>1.804</i>		<i>0.768</i>	<i>0.768</i>
P-020G-072-060P-AL-G-064	72	6.4	6.350	Aluminium Alloy - Clear Anodised	Set Screw	3	45.82	-	19.50	30.35
		<i>0.252</i>	<i>0.250</i>				<i>1.804</i>		<i>0.768</i>	<i>1.195</i>
# P-020G-072-060FF-AL-CL-080	72	6.4	8.000	Aluminium Alloy - Clear Anodised	Cap Screw Clamp	2	46	51	25	38
		<i>0.252</i>	<i>0.315</i>				<i>1.811</i>	<i>2.008</i>	<i>0.984</i>	<i>1.496</i>

Indicates item not stocked at time of printing - Please enquire for lead time

Page 25 of 29

E&OE Pricing and all details subject to change without notice - Copyright Miniature Bearings Australia Pty Ltd

MBA Size Listings are a guide to sizes only and must not be solely relied on for critical design information.

Pulleys - Timing - 2.000mm Pitch - GT - 6mm Wide - Aluminium

Part Number	Teeth	Max Belt Width mm	Bore (d) mm	Material	Locking Type	Type (See Diagram)	Pitch Diameter (PD) mm	Flange Diameter (FD) mm	Overall Length (OL) mm	Hub Diameter (HD) mm
		<i>inches</i>	<i>inches</i>				<i>inches</i>	<i>inches</i>	<i>inches</i>	<i>inches</i>
# P-020G-072-060FF-AL-CL-100	72	6.4	10.000	Aluminium Alloy - Clear Anodised	Cap Screw Clamp	2	46	51	25	38
		<i>0.252</i>	<i>0.394</i>				<i>1.811</i>	<i>2.008</i>	<i>0.984</i>	<i>1.496</i>
# P-020G-072-060FF-AL-CL-110	72	6.4	11.000	Aluminium Alloy - Clear Anodised	Cap Screw Clamp	2	46	51	25	38
		<i>0.252</i>	<i>0.433</i>				<i>1.811</i>	<i>2.008</i>	<i>0.984</i>	<i>1.496</i>
# P-020G-072-060FF-AL-CL-120	72	6.4	12.000	Aluminium Alloy - Clear Anodised	Cap Screw Clamp	2	46	51	25	38
		<i>0.252</i>	<i>0.472</i>				<i>1.811</i>	<i>2.008</i>	<i>0.984</i>	<i>1.496</i>
# P-020G-072-060FF-AL-CL-140	72	6.4	14.000	Aluminium Alloy - Clear Anodised	Cap Screw Clamp	2	46	51	25	38
		<i>0.252</i>	<i>0.551</i>				<i>1.811</i>	<i>2.008</i>	<i>0.984</i>	<i>1.496</i>
# P-020G-072-060FF-AL-CL-150	72	6.4	15.000	Aluminium Alloy - Clear Anodised	Cap Screw Clamp	2	46	51	25	38
		<i>0.252</i>	<i>0.591</i>				<i>1.811</i>	<i>2.008</i>	<i>0.984</i>	<i>1.496</i>
# P-020G-072-060FF-AL-CL-160	72	6.4	16.000	Aluminium Alloy - Clear Anodised	Cap Screw Clamp	2	46	51	25	38
		<i>0.252</i>	<i>0.630</i>				<i>1.811</i>	<i>2.008</i>	<i>0.984</i>	<i>1.496</i>
# P-020G-072-060FF-AL-CL-180	72	6.4	18.000	Aluminium Alloy - Clear Anodised	Cap Screw Clamp	2	46	51	25	38
		<i>0.252</i>	<i>0.709</i>				<i>1.811</i>	<i>2.008</i>	<i>0.984</i>	<i>1.496</i>

Indicates item not stocked at time of printing - Please enquire for lead time

Page 26 of 29

E&OE Pricing and all details subject to change without notice - Copyright Miniature Bearings Australia Pty Ltd

MBA Size Listings are a guide to sizes only and must not be solely relied on for critical design information.

Pulleys - Timing - 2.000mm Pitch - GT - 6mm Wide - Aluminium

Part Number	Teeth	Max Belt Width mm	Bore (d) mm	Material	Locking Type	Type (See Diagram)	Pitch Diameter (PD) mm	Flange Diameter (FD) mm	Overall Length (OL) mm	Hub Diameter (HD) mm
		<i>inches</i>	<i>inches</i>				<i>inches</i>	<i>inches</i>	<i>inches</i>	<i>inches</i>
# P-020G-072-060FF-AL-CL-190	72	6.4	19.000	Aluminium Alloy - Clear Anodised	Cap Screw Clamp	2	46	51	25	38
		<i>0.252</i>	<i>0.748</i>				<i>1.811</i>	<i>2.008</i>	<i>0.984</i>	<i>1.496</i>
# P-020G-072-060FF-AL-CL-200	72	6.4	20.000	Aluminium Alloy - Clear Anodised	Cap Screw Clamp	2	46	51	25	38
		<i>0.252</i>	<i>0.787</i>				<i>1.811</i>	<i>2.008</i>	<i>0.984</i>	<i>1.496</i>
# P-020G-074-060P-AL-G-064	74	6.4	6.350	Aluminium Alloy - Clear Anodised	Set Screw	3	47.09	-	19.50	30.86
		<i>0.252</i>	<i>0.250</i>				<i>1.854</i>		<i>0.768</i>	<i>1.215</i>
P-020G-074-060P-AL-G-080	74	6.4	8.000	Aluminium Alloy - Clear Anodised	Set Screw	3	47.09	-	19.10	30.90
		<i>0.252</i>	<i>0.315</i>				<i>1.854</i>		<i>0.752</i>	<i>1.217</i>
# P-020G-080-060P-AL-G-079	80	6.4	7.938	Aluminium Alloy - Clear Anodised	Set Screw	3	50.91	-	19.50	38.10
		<i>0.252</i>	<i>0.313</i>				<i>2.004</i>		<i>0.768</i>	<i>1.500</i>
# P-020G-080-060P-AL-FL-079	80	6.4	7.938	Aluminium Alloy - Clear Anodised	Fairloc Hub - tm-	3	50.91	-	19.50	25.40
		<i>0.252</i>	<i>0.313</i>				<i>2.004</i>		<i>0.768</i>	<i>1.000</i>
P-020G-080-060P-AL-FL-080	80	6.4	8.000	Aluminium Alloy - Clear Anodised	Fairloc Hub - tm-	3	50.91	-	19.10	25.40
		<i>0.252</i>	<i>0.315</i>				<i>2.004</i>		<i>0.752</i>	<i>1.000</i>

Indicates item not stocked at time of printing - Please enquire for lead time

Page 27 of 29

E&OE Pricing and all details subject to change without notice - Copyright Miniature Bearings Australia Pty Ltd

MBA Size Listings are a guide to sizes only and must not be solely relied on for critical design information.

Pulleys - Timing - 2.000mm Pitch - GT - 6mm Wide - Aluminium

Part Number	Teeth	Max Belt Width mm	Bore (d) mm	Material	Locking Type	Type (See Diagram)	Pitch Diameter (PD) mm	Flange Diameter (FD) mm	Overall Length (OL) mm	Hub Diameter (HD) mm
		<i>inches</i>	<i>inches</i>				<i>inches</i>	<i>inches</i>	<i>inches</i>	<i>inches</i>
# P-020G-080-060P-AL-G-080	80	6.4	8.000	Aluminium Alloy - Clear Anodised	Set Screw	3	50.91	-	19.10	38.10
		<i>0.252</i>	<i>0.315</i>				<i>2.004</i>		<i>0.752</i>	<i>1.500</i>
# P-020G-090-060P-AL-FL-079	90	6.4	7.938	Aluminium Alloy - Clear Anodised	Fairloc Hub - tm-	3	57.27	-	19.50	25.40
		<i>0.252</i>	<i>0.313</i>				<i>2.255</i>		<i>0.768</i>	<i>1.000</i>
P-020G-090-060P-AL-G-079	90	6.4	7.938	Aluminium Alloy - Clear Anodised	Set Screw	3	57.27	-	19.50	38.10
		<i>0.252</i>	<i>0.313</i>				<i>2.255</i>		<i>0.768</i>	<i>1.500</i>
P-020G-090-060P-AL-G-080	90	6.4	8.000	Aluminium Alloy - Clear Anodised	Set Screw	3	57.27	-	19.10	38.10
		<i>0.252</i>	<i>0.315</i>				<i>2.255</i>		<i>0.752</i>	<i>1.500</i>
# P-020G-090-060P-AL-FL-080	90	6.4	8.000	Aluminium Alloy - Clear Anodised	Fairloc Hub - tm-	3	57.27	-	19.10	25.40
		<i>0.252</i>	<i>0.315</i>				<i>2.255</i>		<i>0.752</i>	<i>1.000</i>
# P-020G-100-060P-AL-G-079	100	6.4	7.938	Aluminium Alloy - Clear Anodised	Set Screw	3	63.64	-	19.50	38.10
		<i>0.252</i>	<i>0.313</i>				<i>2.506</i>		<i>0.768</i>	<i>1.500</i>
# P-020G-100-060P-AL-FL-079	100	6.4	7.938	Aluminium Alloy - Clear Anodised	Fairloc Hub - tm-	3	63.64	-	19.50	25.40
		<i>0.252</i>	<i>0.313</i>				<i>2.506</i>		<i>0.768</i>	<i>1.000</i>

Indicates item not stocked at time of printing - Please enquire for lead time

Page 28 of 29

E&OE Pricing and all details subject to change without notice - Copyright Miniature Bearings Australia Pty Ltd
MBA Size Listings are a guide to sizes only and must not be solely relied on for critical design information.

Pulleys - Timing - 2.000mm Pitch - GT - 6mm Wide - Aluminium

Part Number	Teeth	Max Belt Width mm	Bore (d) mm	Material	Locking Type	Type (See Diagram)	Pitch Diameter (PD) mm	Flange Diameter (FD) mm	Overall Length (OL) mm	Hub Diameter (HD) mm
		<i>inches</i>	<i>inches</i>				<i>inches</i>	<i>inches</i>	<i>inches</i>	<i>inches</i>
# P-020G-100-060P-AL-FL-080	100	6.4	8.000	Aluminium Alloy - Clear Anodised	Fairloc Hub - tm-	3	63.64	-	19.10	25.40
		<i>0.252</i>	<i>0.315</i>				<i>2.506</i>		<i>0.752</i>	<i>1.000</i>
# P-020G-100-060P-AL-G-080	100	6.4	8.000	Aluminium Alloy - Clear Anodised	Set Screw	3	63.64	-	19.10	38.10
		<i>0.252</i>	<i>0.315</i>				<i>2.506</i>		<i>0.752</i>	<i>1.500</i>
P-020G-120-060P-AL-G-095	120	6.4	9.525	Aluminium Alloy - Clear Anodised	Set Screw	3	76.36	-	19.50	38.10
		<i>0.252</i>	<i>0.375</i>				<i>3.006</i>		<i>0.768</i>	<i>1.500</i>
# P-020G-120-060P-AL-FL-095	120	6.4	9.525	Aluminium Alloy - Clear Anodised	Fairloc Hub - tm-	3	76.36	-	19.50	25.40
		<i>0.252</i>	<i>0.375</i>				<i>3.006</i>		<i>0.768</i>	<i>1.000</i>
# P-020G-120-060P-AL-FL-100	120	6.4	10.000	Aluminium Alloy - Clear Anodised	Fairloc Hub - tm-	3	76.36	-	19.10	25.40
		<i>0.252</i>	<i>0.394</i>				<i>3.006</i>		<i>0.752</i>	<i>1.000</i>
P-020G-120-060P-AL-G-100	120	6.4	10.000	Aluminium Alloy - Clear Anodised	Set Screw	3	76.36	-	19.10	38.10
		<i>0.252</i>	<i>0.394</i>				<i>3.006</i>		<i>0.752</i>	<i>1.500</i>

Indicates item not stocked at time of printing - Please enquire for lead time

Page 29 of 29

E&OE Pricing and all details subject to change without notice - Copyright Miniature Bearings Australia Pty Ltd

MBA Size Listings are a guide to sizes only and must not be solely relied on for critical design information.

DISTRIBUTED BY

Distributed By:

