



Pulleys - Timing - 2.032mm Pitch - MXL - 3.2mm Wide - Aluminium

10/4/2018

Indicates item not stocked at time of printing - Please enquire for lead time

E&OE Pricing and all details subject to change without notice - Copyright Miniature Bearings Australia Pty Ltd

MBA Size Listings are a guide to sizes only and must not be solely relied on for critical design information.

Page 1 of 11

INFORMATION

Timing Pulleys to suit MXL 2.032mm Pitch Timing Belts. Suits belts 3.0 to 3.2mm wide.

2.032mm metric is equivalent to 0.080 pitch imperial

This catalogue to be read in conjunction with information at

<http://www.minibearings.com.au//partslist/beltstiming2032mmpitchmxl3mmwide/beltstiming2032mmpitchmxl3mmwide/A/1/>

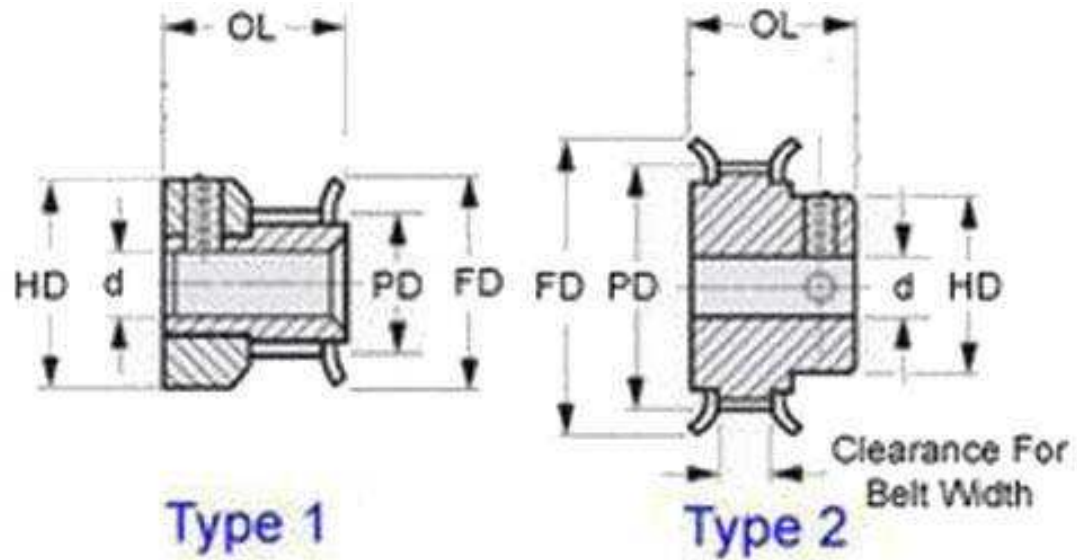
<http://www.minibearings.com.au//partslist/beltstiming2032mmpitchmxldoublesided3mmwide/beltstiming2032mmpitchmxldoublesided3mmwide/A/1/>

<http://www.minibearings.com.au//partslist/beltstiming2032mmpitchmxltrumotion3mmwide/beltstiming2032mmpitchmxltrumotion3mmwide/A/1/>

Indicates item not stocked at time of printing - Please enquire for lead time

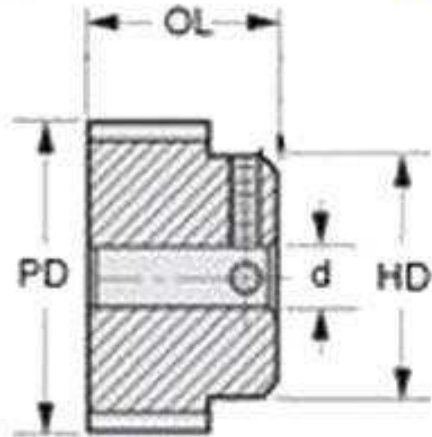
E&OE Pricing and all details subject to change without notice - Copyright Miniature Bearings Australia Pty Ltd

MBA Size Listings are a guide to sizes only and must not be solely relied on for critical design information.



Type 1

Type 2



Type 3

Indicates item not stocked at time of printing - Please enquire for lead time

E&OE Pricing and all details subject to change without notice - Copyright Miniature Bearings Australia Pty Ltd

MBA Size Listings are a guide to sizes only and must not be solely relied on for critical design information.

Pulleys - Timing - 2.032mm Pitch - MXL - 3.2mm Wide - Aluminium

Part Number	Teeth	Max Belt Width mm	Bore (d) mm	Material	Locking Type	Type (See Diagram)	Pitch Diameter (PD) mm	Flange Diameter (FD) mm	Overall Length (OL) mm	Hub Diameter (HD) mm
		<i>inches</i>	<i>inches</i>				<i>inches</i>	<i>inches</i>	<i>inches</i>	<i>inches</i>
P-MXL-010-030FH-AL-G-030	10	3.2	3.000	Aluminium Alloy - Clear Anodised	Set Screw	1	6.47	10.8	11.10	10.80
		<i>0.126</i>	<i>0.118</i>				<i>0.255</i>	<i>0.425</i>	<i>0.437</i>	<i>0.425</i>
P-MXL-010-032FH-AL-G-032	10	3.2	3.175	Aluminium Alloy - Clear Anodised	Set Screw	1	6.47	10.8	11.11	10.80
		<i>0.126</i>	<i>0.125</i>				<i>0.255</i>	<i>0.425</i>	<i>0.437</i>	<i>0.425</i>
P-MXL-011-030FH-AL-G-030	11	3.2	3.000	Aluminium Alloy - Clear Anodised	Set Screw	1	7.11	11.4	11.10	11.40
		<i>0.126</i>	<i>0.118</i>				<i>0.280</i>	<i>0.449</i>	<i>0.437</i>	<i>0.449</i>
# P-MXL-011-032FH-AL-G-032	11	3.2	3.175	Aluminium Alloy - Clear Anodised	Set Screw	1	7.11	11.4	11.11	11.43
		<i>0.126</i>	<i>0.125</i>				<i>0.280</i>	<i>0.449</i>	<i>0.437</i>	<i>0.450</i>
# P-MXL-012-030FH-AL-G-030	12	3.2	3.000	Aluminium Alloy - Clear Anodised	Set Screw	1	7.76	12.2	11.10	12.20
		<i>0.126</i>	<i>0.118</i>				<i>0.306</i>	<i>0.480</i>	<i>0.437</i>	<i>0.480</i>
P-MXL-012-032FH-AL-G-032	12	3.2	3.175	Aluminium Alloy - Clear Anodised	Set Screw	1	7.76	12.2	11.11	12.19
		<i>0.126</i>	<i>0.125</i>				<i>0.306</i>	<i>0.480</i>	<i>0.437</i>	<i>0.480</i>
P-MXL-014-030FH-AL-G-030	14	3.2	3.000	Aluminium Alloy - Clear Anodised	Set Screw	1	9.05	13.5	11.10	13.50
		<i>0.126</i>	<i>0.118</i>				<i>0.356</i>	<i>0.531</i>	<i>0.437</i>	<i>0.531</i>

Indicates item not stocked at time of printing - Please enquire for lead time

Page 4 of 11

E&OE Pricing and all details subject to change without notice - Copyright Miniature Bearings Australia Pty Ltd

MBA Size Listings are a guide to sizes only and must not be solely relied on for critical design information.

Pulleys - Timing - 2.032mm Pitch - MXL - 3.2mm Wide - Aluminium

Part Number	Teeth	Max Belt Width mm	Bore (d) mm	Material	Locking Type	Type (See Diagram)	Pitch Diameter (PD) mm	Flange Diameter (FD) mm	Overall Length (OL) mm	Hub Diameter (HD) mm
		<i>inches</i>	<i>inches</i>				<i>inches</i>	<i>inches</i>	<i>inches</i>	<i>inches</i>
# P-MXL-014-032FH-AL-G-032	14	3.2	3.175	Aluminium Alloy - Clear Anodised	Set Screw	1	9.05	13.5	11.11	13.46
		<i>0.126</i>	<i>0.125</i>				<i>0.356</i>	<i>0.531</i>	<i>0.437</i>	<i>0.530</i>
P-MXL-015-030FH-AL-G-040	15	3.2	4.000	Aluminium Alloy - Clear Anodised	Set Screw	1	9.70	14.1	11.10	14.10
		<i>0.126</i>	<i>0.157</i>				<i>0.382</i>	<i>0.555</i>	<i>0.437</i>	<i>0.555</i>
P-MXL-015-032FH-AL-G-048	15	3.2	4.763	Aluminium Alloy - Clear Anodised	Set Screw	1	9.70	14.1	11.11	14.10
		<i>0.126</i>	<i>0.188</i>				<i>0.382</i>	<i>0.555</i>	<i>0.437</i>	<i>0.555</i>
# P-MXL-015-030FH-AL-G-050	15	3.2	5.000	Aluminium Alloy - Clear Anodised	Set Screw	1	9.70	14.1	11.11	14.10
		<i>0.126</i>	<i>0.197</i>				<i>0.382</i>	<i>0.555</i>	<i>0.437</i>	<i>0.555</i>
# P-MXL-016-030FH-AL-G-040	16	3.2	4.000	Aluminium Alloy - Clear Anodised	Set Screw	1	10.34	14.7	11.10	14.70
		<i>0.126</i>	<i>0.157</i>				<i>0.407</i>	<i>0.579</i>	<i>0.437</i>	<i>0.579</i>
P-MXL-016-032FH-AL-G-048	16	3.2	4.763	Aluminium Alloy - Clear Anodised	Set Screw	1	10.34	14.7	11.11	14.73
		<i>0.126</i>	<i>0.188</i>				<i>0.407</i>	<i>0.579</i>	<i>0.437</i>	<i>0.580</i>
# P-MXL-016-030FH-AL-G-050	16	3.2	5.000	Aluminium Alloy - Clear Anodised	Set Screw	1	10.34	14.7	11.11	14.73
		<i>0.126</i>	<i>0.197</i>				<i>0.407</i>	<i>0.579</i>	<i>0.437</i>	<i>0.580</i>

Indicates item not stocked at time of printing - Please enquire for lead time

Page 5 of 11

E&OE Pricing and all details subject to change without notice - Copyright Miniature Bearings Australia Pty Ltd

MBA Size Listings are a guide to sizes only and must not be solely relied on for critical design information.

Pulleys - Timing - 2.032mm Pitch - MXL - 3.2mm Wide - Aluminium

Part Number	Teeth	Max Belt Width mm	Bore (d) mm	Material	Locking Type	Type (See Diagram)	Pitch Diameter (PD) mm	Flange Diameter (FD) mm	Overall Length (OL) mm	Hub Diameter (HD) mm
		<i>inches</i>	<i>inches</i>				<i>inches</i>	<i>inches</i>	<i>inches</i>	<i>inches</i>
# P-MXL-018-030FF-AL-G-040	18	3.2	4.000	Aluminium Alloy - Clear Anodised	Set Screw	2	11.64	16.1	12.30	7.90
		<i>0.126</i>	<i>0.157</i>				<i>0.458</i>	<i>0.634</i>	<i>0.484</i>	<i>0.311</i>
# P-MXL-018-032FF-AL-G-048	18	3.2	4.763	Aluminium Alloy - Clear Anodised	Set Screw	2	11.64	16.1	12.30	7.93
		<i>0.126</i>	<i>0.188</i>				<i>0.458</i>	<i>0.634</i>	<i>0.484</i>	<i>0.312</i>
# P-MXL-018-030FF-AL-G-050	18	3.2	5.000	Aluminium Alloy - Clear Anodised	Set Screw	1	11.64	16.1	12.30	7.93
		<i>0.126</i>	<i>0.197</i>				<i>0.458</i>	<i>0.634</i>	<i>0.484</i>	<i>0.312</i>
P-MXL-018-030FH-AL-G-060	18	3.2	6.000	Aluminium Alloy - Clear Anodised	Set Screw	1	11.64	16.1	11.10	16.10
		<i>0.126</i>	<i>0.236</i>				<i>0.458</i>	<i>0.634</i>	<i>0.437</i>	<i>0.634</i>
# P-MXL-018-032FH-AL-G-064	18	3.2	6.350	Aluminium Alloy - Clear Anodised	Set Screw	1	11.64	16.1	11.11	16.13
		<i>0.126</i>	<i>0.250</i>				<i>0.458</i>	<i>0.634</i>	<i>0.437</i>	<i>0.635</i>
P-MXL-020-030FF-AL-G-040	20	3.2	4.000	Aluminium Alloy - Clear Anodised	Set Screw	2	12.93	17.4	12.30	9.20
		<i>0.126</i>	<i>0.157</i>				<i>0.509</i>	<i>0.685</i>	<i>0.484</i>	<i>0.362</i>
# P-MXL-020-032FF-AL-G-044	20	3.2	4.445	Aluminium Alloy - Clear Anodised	Set Screw	2	12.93	17.4	12.30	9.25
		<i>0.126</i>	<i>0.175</i>				<i>0.509</i>	<i>0.685</i>	<i>0.484</i>	<i>0.364</i>

Indicates item not stocked at time of printing - Please enquire for lead time

Page 6 of 11

E&OE Pricing and all details subject to change without notice - Copyright Miniature Bearings Australia Pty Ltd
MBA Size Listings are a guide to sizes only and must not be solely relied on for critical design information.

Pulleys - Timing - 2.032mm Pitch - MXL - 3.2mm Wide - Aluminium

Part Number	Teeth	Max Belt Width mm	Bore (d) mm	Material	Locking Type	Type (See Diagram)	Pitch Diameter (PD) mm	Flange Diameter (FD) mm	Overall Length (OL) mm	Hub Diameter (HD) mm
# P-MXL-020-032FF-AL-G-048	20	3.2	4.763	Aluminium Alloy - Clear Anodised	Set Screw	2	12.93	17.4	12.30	9.25
		<i>0.126</i>	<i>0.188</i>				<i>0.509</i>	<i>0.685</i>	<i>0.484</i>	<i>0.364</i>
# P-MXL-020-030FF-AL-G-050	20	3.2	5.000	Aluminium Alloy - Clear Anodised	Set Screw	1	12.93	17.4	12.30	9.20
		<i>0.126</i>	<i>0.197</i>				<i>0.509</i>	<i>0.685</i>	<i>0.484</i>	<i>0.362</i>
P-MXL-020-030FH-AL-G-060	20	3.2	6.000	Aluminium Alloy - Clear Anodised	Set Screw	1	12.93	17.4	11.10	17.40
		<i>0.126</i>	<i>0.236</i>				<i>0.509</i>	<i>0.685</i>	<i>0.437</i>	<i>0.685</i>
# P-MXL-020-032FH-AL-G-064	20	3.2	6.350	Aluminium Alloy - Clear Anodised	Set Screw	1	12.93	17.4	11.11	17.40
		<i>0.126</i>	<i>0.250</i>				<i>0.509</i>	<i>0.685</i>	<i>0.437</i>	<i>0.685</i>
# P-MXL-021-030FF-AL-G-040	21	3.2	4.000	Aluminium Alloy - Clear Anodised	Set Screw	2	13.58	18.0	12.30	9.90
		<i>0.126</i>	<i>0.157</i>				<i>0.535</i>	<i>0.709</i>	<i>0.484</i>	<i>0.390</i>
# P-MXL-021-032FF-AL-G-048	21	3.2	4.763	Aluminium Alloy - Clear Anodised	Set Screw	2	13.58	18.0	12.30	9.91
		<i>0.126</i>	<i>0.188</i>				<i>0.535</i>	<i>0.709</i>	<i>0.484</i>	<i>0.390</i>
# P-MXL-021-030FF-AL-G-050	21	3.2	5.000	Aluminium Alloy - Clear Anodised	Set Screw	2	13.58	18.0	12.30	9.91
		<i>0.126</i>	<i>0.197</i>				<i>0.535</i>	<i>0.709</i>	<i>0.484</i>	<i>0.390</i>

Indicates item not stocked at time of printing - Please enquire for lead time

Page 7 of 11

E&OE Pricing and all details subject to change without notice - Copyright Miniature Bearings Australia Pty Ltd
MBA Size Listings are a guide to sizes only and must not be solely relied on for critical design information.

Pulleys - Timing - 2.032mm Pitch - MXL - 3.2mm Wide - Aluminium

Part Number	Teeth	Max Belt Width mm	Bore (d) mm	Material	Locking Type	Type (See Diagram)	Pitch Diameter (PD) mm	Flange Diameter (FD) mm	Overall Length (OL) mm	Hub Diameter (HD) mm
		<i>inches</i>	<i>inches</i>				<i>inches</i>	<i>inches</i>	<i>inches</i>	<i>inches</i>
# P-MXL-021-030FH-AL-G-060	21	3.2	6.000	Aluminium Alloy - Clear Anodised	Set Screw	1	13.58	18.0	11.10	18.00
		<i>0.126</i>	<i>0.236</i>				<i>0.535</i>	<i>0.709</i>	<i>0.437</i>	<i>0.709</i>
# P-MXL-021-032FH-AL-G-064	21	3.2	6.350	Aluminium Alloy - Clear Anodised	Set Screw	1	13.58	18.0	11.11	18.03
		<i>0.126</i>	<i>0.250</i>				<i>0.535</i>	<i>0.709</i>	<i>0.437</i>	<i>0.710</i>
# P-MXL-022-030FF-AL-G-040	22	3.2	4.000	Aluminium Alloy - Clear Anodised	Set Screw	2	14.22	18.8	12.30	9.90
		<i>0.126</i>	<i>0.157</i>				<i>0.560</i>	<i>0.740</i>	<i>0.484</i>	<i>0.390</i>
# P-MXL-022-032FF-AL-G-048	22	3.2	4.763	Aluminium Alloy - Clear Anodised	Set Screw	2	14.22	18.8	12.30	9.91
		<i>0.126</i>	<i>0.188</i>				<i>0.560</i>	<i>0.740</i>	<i>0.484</i>	<i>0.390</i>
# P-MXL-022-030FF-AL-G-050	22	3.2	5.000	Aluminium Alloy - Clear Anodised	Set Screw	2	14.22	18.8	12.30	9.91
		<i>0.126</i>	<i>0.197</i>				<i>0.560</i>	<i>0.740</i>	<i>0.484</i>	<i>0.390</i>
# P-MXL-022-030FH-AL-G-060	22	3.2	6.000	Aluminium Alloy - Clear Anodised	Set Screw	1	14.22	18.8	11.10	18.00
		<i>0.126</i>	<i>0.236</i>				<i>0.560</i>	<i>0.740</i>	<i>0.437</i>	<i>0.709</i>
# P-MXL-022-032FH-AL-G-064	22	3.2	6.350	Aluminium Alloy - Clear Anodised	Set Screw	1	14.22	18.8	11.11	18.80
		<i>0.126</i>	<i>0.250</i>				<i>0.560</i>	<i>0.740</i>	<i>0.437</i>	<i>0.740</i>

Indicates item not stocked at time of printing - Please enquire for lead time

Page 8 of 11

E&OE Pricing and all details subject to change without notice - Copyright Miniature Bearings Australia Pty Ltd

MBA Size Listings are a guide to sizes only and must not be solely relied on for critical design information.

Pulleys - Timing - 2.032mm Pitch - MXL - 3.2mm Wide - Aluminium

Part Number	Teeth	Max Belt Width mm	Bore (d) mm	Material	Locking Type	Type (See Diagram)	Pitch Diameter (PD) mm	Flange Diameter (FD) mm	Overall Length (OL) mm	Hub Diameter (HD) mm
		<i>inches</i>	<i>inches</i>				<i>inches</i>	<i>inches</i>	<i>inches</i>	<i>inches</i>
# P-MXL-024-030FF-AL-G-060	24	3.2	6.000	Aluminium Alloy - Clear Anodised	Set Screw	2	15.52	20.1	13.10	11.20
		<i>0.126</i>	<i>0.236</i>				<i>0.611</i>	<i>0.791</i>	<i>0.516</i>	<i>0.441</i>
# P-MXL-024-032FF-AL-G-064	24	3.2	6.350	Aluminium Alloy - Clear Anodised	Set Screw	2	15.52	20.1	13.10	11.23
		<i>0.126</i>	<i>0.250</i>				<i>0.611</i>	<i>0.791</i>	<i>0.516</i>	<i>0.442</i>
# P-MXL-025-030FF-AL-G-060	25	3.2	6.000	Aluminium Alloy - Clear Anodised	Set Screw	2	16.16	20.7	13.10	11.90
		<i>0.126</i>	<i>0.236</i>				<i>0.636</i>	<i>0.815</i>	<i>0.516</i>	<i>0.469</i>
# P-MXL-028-030FF-AL-G-060	28	3.2	6.000	Aluminium Alloy - Clear Anodised	Set Screw	2	18.10	22.7	13.10	12.50
		<i>0.126</i>	<i>0.236</i>				<i>0.713</i>	<i>0.894</i>	<i>0.516</i>	<i>0.492</i>
# P-MXL-028-032FF-AL-G-064	28	3.2	6.350	Aluminium Alloy - Clear Anodised	Set Screw	2	18.10	22.7	13.10	12.55
		<i>0.126</i>	<i>0.250</i>				<i>0.713</i>	<i>0.894</i>	<i>0.516</i>	<i>0.494</i>
P-MXL-030-030FF-AL-G-060	30	3.2	6.000	Aluminium Alloy - Clear Anodised	Set Screw	2	19.40	24.0	13.10	13.90
		<i>0.126</i>	<i>0.236</i>				<i>0.764</i>	<i>0.945</i>	<i>0.516</i>	<i>0.547</i>
# P-MXL-030-032FF-AL-G-064	30	3.2	6.350	Aluminium Alloy - Clear Anodised	Set Screw	2	19.40	24.0	13.10	13.87
		<i>0.126</i>	<i>0.250</i>				<i>0.764</i>	<i>0.945</i>	<i>0.516</i>	<i>0.546</i>

Indicates item not stocked at time of printing - Please enquire for lead time

Page 9 of 11

E&OE Pricing and all details subject to change without notice - Copyright Miniature Bearings Australia Pty Ltd

MBA Size Listings are a guide to sizes only and must not be solely relied on for critical design information.

Pulleys - Timing - 2.032mm Pitch - MXL - 3.2mm Wide - Aluminium

Part Number	Teeth	Max Belt Width mm	Bore (d) mm	Material	Locking Type	Type (See Diagram)	Pitch Diameter (PD) mm	Flange Diameter (FD) mm	Overall Length (OL) mm	Hub Diameter (HD) mm
		<i>inches</i>	<i>inches</i>				<i>inches</i>	<i>inches</i>	<i>inches</i>	<i>inches</i>
# P-MXL-032-030FF-AL-G-060	32	3.2	6.000	Aluminium Alloy - Clear Anodised	Set Screw	2	20.69	25.4	13.10	15.20
		<i>0.126</i>	<i>0.236</i>				<i>0.815</i>	<i>1.000</i>	<i>0.516</i>	<i>0.598</i>
# P-MXL-032-032FF-AL-G-064	32	3.2	6.350	Aluminium Alloy - Clear Anodised	Set Screw	2	20.69	25.4	13.10	15.19
		<i>0.126</i>	<i>0.250</i>				<i>0.815</i>	<i>1.000</i>	<i>0.516</i>	<i>0.598</i>
P-MXL-036-030FF-AL-G-060	36	3.2	6.000	Aluminium Alloy - Clear Anodised	Set Screw	2	23.28	28.1	13.10	17.20
		<i>0.126</i>	<i>0.236</i>				<i>0.917</i>	<i>1.106</i>	<i>0.516</i>	<i>0.677</i>
P-MXL-036-032FF-AL-G-064	36	3.2	6.350	Aluminium Alloy - Clear Anodised	Set Screw	2	23.28	28.1	13.10	17.17
		<i>0.126</i>	<i>0.250</i>				<i>0.917</i>	<i>1.106</i>	<i>0.516</i>	<i>0.676</i>
# P-MXL-040-030FF-AL-G-060	40	3.2	6.000	Aluminium Alloy - Clear Anodised	Set Screw	2	25.86	30.7	13.50	19.20
		<i>0.126</i>	<i>0.236</i>				<i>1.018</i>	<i>1.209</i>	<i>0.531</i>	<i>0.756</i>
P-MXL-040-032FF-AL-G-064	40	3.2	6.350	Aluminium Alloy - Clear Anodised	Set Screw	2	25.86	30.7	13.49	19.15
		<i>0.126</i>	<i>0.250</i>				<i>1.018</i>	<i>1.209</i>	<i>0.531</i>	<i>0.754</i>
# P-MXL-042-030FF-AL-G-060	42	3.2	6.000	Aluminium Alloy - Clear Anodised	Set Screw	2	27.15	32.0	13.50	20.50
		<i>0.126</i>	<i>0.236</i>				<i>1.069</i>	<i>1.260</i>	<i>0.531</i>	<i>0.807</i>

Indicates item not stocked at time of printing - Please enquire for lead time

Page 10 of 11

E&OE Pricing and all details subject to change without notice - Copyright Miniature Bearings Australia Pty Ltd

MBA Size Listings are a guide to sizes only and must not be solely relied on for critical design information.

Pulleys - Timing - 2.032mm Pitch - MXL - 3.2mm Wide - Aluminium

Part Number	Teeth	Max Belt Width mm	Bore (d) mm	Material	Locking Type	Type (See Diagram)	Pitch Diameter (PD) mm	Flange Diameter (FD) mm	Overall Length (OL) mm	Hub Diameter (HD) mm
		<i>inches</i>	<i>inches</i>				<i>inches</i>	<i>inches</i>	<i>inches</i>	<i>inches</i>
# P-MXL-042-032FF-AL-G-064	42	3.2	6.350	Aluminium Alloy - Clear Anodised	Set Screw	2	27.15	32.0	13.49	20.47
		<i>0.126</i>	<i>0.250</i>				<i>1.069</i>	<i>1.260</i>	<i>0.531</i>	<i>0.806</i>
# P-MXL-044-030FF-AL-G-060	44	3.2	6.000	Aluminium Alloy - Clear Anodised	Set Screw	2	28.45	33.4	13.50	21.80
		<i>0.126</i>	<i>0.236</i>				<i>1.120</i>	<i>1.315</i>	<i>0.531</i>	<i>0.858</i>
# P-MXL-044-032FF-AL-G-064	44	3.2	6.350	Aluminium Alloy - Clear Anodised	Set Screw	2	28.45	33.4	13.49	21.79
		<i>0.126</i>	<i>0.250</i>				<i>1.120</i>	<i>1.315</i>	<i>0.531</i>	<i>0.858</i>
# P-MXL-048-030FF-AL-G-060	48	3.2	6.000	Aluminium Alloy - Clear Anodised	Set Screw	2	31.03	36.1	13.50	23.80
		<i>0.126</i>	<i>0.236</i>				<i>1.222</i>	<i>1.421</i>	<i>0.531</i>	<i>0.937</i>
# P-MXL-048-032FF-AL-G-064	48	3.2	6.350	Aluminium Alloy - Clear Anodised	Set Screw	2	31.03	36.1	13.49	23.77
		<i>0.126</i>	<i>0.250</i>				<i>1.222</i>	<i>1.421</i>	<i>0.531</i>	<i>0.936</i>
# P-MXL-060-030FF-AL-G-060	60	3.2	6.000	Aluminium Alloy - Clear Anodised	Set Screw	2	38.79	43.9	13.50	31.00
		<i>0.126</i>	<i>0.236</i>				<i>1.527</i>	<i>1.728</i>	<i>0.531</i>	<i>1.220</i>
# P-MXL-060-032FF-AL-G-064	60	3.2	6.350	Aluminium Alloy - Clear Anodised	Set Screw	2	38.79	43.9	13.49	31.04
		<i>0.126</i>	<i>0.250</i>				<i>1.527</i>	<i>1.728</i>	<i>0.531</i>	<i>1.222</i>

Indicates item not stocked at time of printing - Please enquire for lead time

Page 11 of 11

E&OE Pricing and all details subject to change without notice - Copyright Miniature Bearings Australia Pty Ltd
MBA Size Listings are a guide to sizes only and must not be solely relied on for critical design information.

DISTRIBUTED BY

Distributed By:

