



# **Pulleys - Timing - 2.500mm Pitch - T2.5 - 6.4mm Wide - Aluminium**

10/4/2018

# Indicates item not stocked at time of printing - Please enquire for lead time

E&OE Pricing and all details subject to change without notice - Copyright Miniature Bearings Australia Pty Ltd

MBA Size Listings are a guide to sizes only and must not be solely relied on for critical design information.

## INFORMATION

Timing Pulleys to suit T Series 2.500mm Pitch Timing Belts. Suits belts 6.0 to 6.4mm wide.

For easy ready selected sets of timing belts and pulleys please see the [HES website](http://www.hobbyparts.com.au/store/categories/easy+kits/)

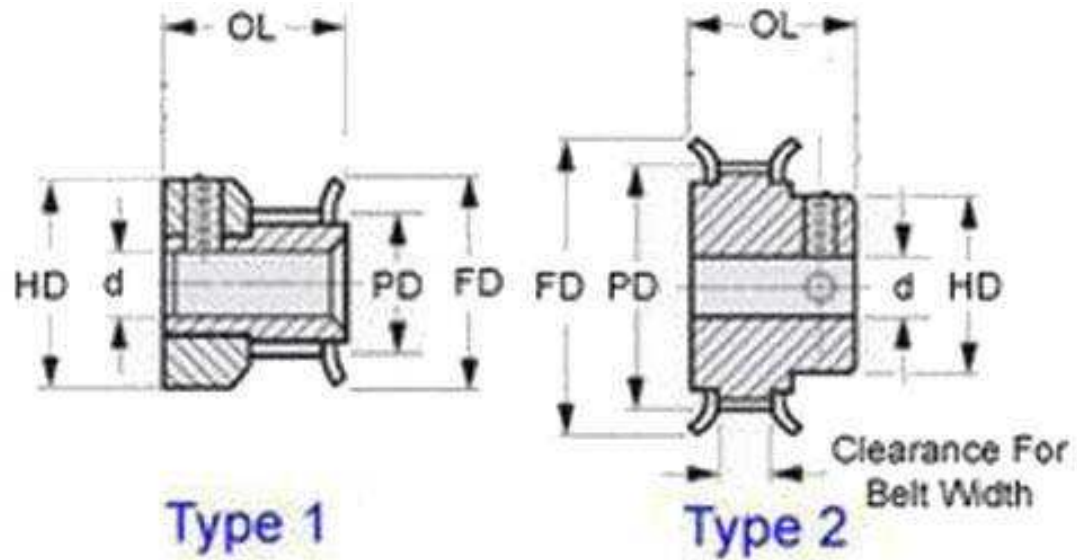
This catalogue to be read in conjunction with information at <http://www.minibearings.com.au/partslist/beltstiming2500mmpitcht256mmwide/beltstiming2500mmpitcht256mmwide/A/1/>

<http://www.minibearings.com.au/www.smallparts.com.au/store/categories/easy+kits/>

# Indicates item not stocked at time of printing - Please enquire for lead time

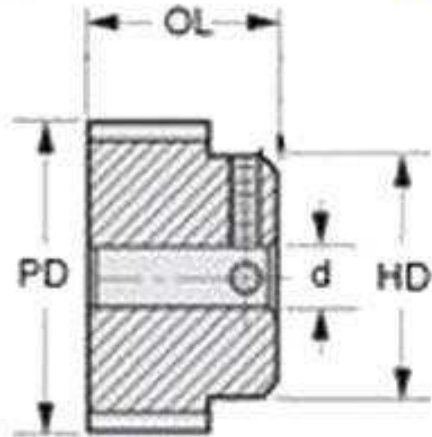
E&OE Pricing and all details subject to change without notice - Copyright Miniature Bearings Australia Pty Ltd

MBA Size Listings are a guide to sizes only and must not be solely relied on for critical design information.



Type 1

Type 2



Type 3

# Indicates item not stocked at time of printing - Please enquire for lead time

E&OE Pricing and all details subject to change without notice - Copyright Miniature Bearings Australia Pty Ltd

MBA Size Listings are a guide to sizes only and must not be solely relied on for critical design information.

## Pulleys - Timing - 2.500mm Pitch - T2.5 - 6.4mm Wide - Aluminium

Part Number	Teeth	Max Belt Width mm	Bore (d) mm	Material	Locking Type	Type (See Diagram)	Pitch Diameter (PD) mm	Flange Diameter (FD) mm	Overall Length (OL) mm	Hub Diameter (HD) mm
		<i>inches</i>	<i>inches</i>				<i>inches</i>	<i>inches</i>	<i>inches</i>	<i>inches</i>
P-025T-012-060FH-AL-G-030	12	6.4	3.000	Aluminium Alloy - Clear Anodised	Set Screw	1	9.55	13.0	16.00	13.00
		<i>0.252</i>	<i>0.118</i>				<i>0.376</i>	<i>0.512</i>	<i>0.630</i>	<i>0.512</i>
P-025T-014-060FH-AL-G-030	14	6.4	3.000	Aluminium Alloy - Clear Anodised	Set Screw	1	11.14	15.0	16.00	15.00
		<i>0.252</i>	<i>0.118</i>				<i>0.439</i>	<i>0.591</i>	<i>0.630</i>	<i>0.591</i>
P-025T-015-060FH-AL-G-030	15	6.4	3.000	Aluminium Alloy - Clear Anodised	Set Screw	1	11.93	15.0	16.00	15.00
		<i>0.252</i>	<i>0.118</i>				<i>0.470</i>	<i>0.591</i>	<i>0.630</i>	<i>0.591</i>
P-025T-016-060FH-AL-G-030	16	6.4	3.000	Aluminium Alloy - Clear Anodised	Set Screw	1	12.73	15.0	16.00	15.00
		<i>0.252</i>	<i>0.118</i>				<i>0.501</i>	<i>0.591</i>	<i>0.630</i>	<i>0.591</i>
P-025T-018-060FF-AL-G-040	18	6.4	4.000	Aluminium Alloy - Clear Anodised	Set Screw	2	14.32	17.5	16.00	9.00
		<i>0.252</i>	<i>0.157</i>				<i>0.564</i>	<i>0.689</i>	<i>0.630</i>	<i>0.354</i>
# P-025T-019-060FF-AL-G-040	19	6.4	4.000	Aluminium Alloy - Clear Anodised	Set Screw	2	15.11	18.0	16.00	10.00
		<i>0.252</i>	<i>0.157</i>				<i>0.595</i>	<i>0.709</i>	<i>0.630</i>	<i>0.394</i>
# P-025T-020-060FF-AL-G-040	20	6.4	4.000	Aluminium Alloy - Clear Anodised	Set Screw	2	15.91	20.0	16.00	11.00
		<i>0.252</i>	<i>0.157</i>				<i>0.626</i>	<i>0.787</i>	<i>0.630</i>	<i>0.433</i>

# Indicates item not stocked at time of printing - Please enquire for lead time

Page 4 of 6

E&OE Pricing and all details subject to change without notice - Copyright Miniature Bearings Australia Pty Ltd  
MBA Size Listings are a guide to sizes only and must not be solely relied on for critical design information.

## Pulleys - Timing - 2.500mm Pitch - T2.5 - 6.4mm Wide - Aluminium

Part Number	Teeth	Max Belt Width mm	Bore (d) mm	Material	Locking Type	Type (See Diagram)	Pitch Diameter (PD) mm	Flange Diameter (FD) mm	Overall Length (OL) mm	Hub Diameter (HD) mm
# P-025T-022-060FF-AL-G-040	22	6.4	4.000	Aluminium Alloy - Clear Anodised	Set Screw	2	17.50	23.0	16.00	11.00
		<i>0.252</i>	<i>0.157</i>				<i>0.689</i>	<i>0.906</i>	<i>0.630</i>	<i>0.433</i>
P-025T-024-060FF-AL-G-040	24	6.4	4.000	Aluminium Alloy - Clear Anodised	Set Screw	2	19.09	23.0	16.00	12.00
		<i>0.252</i>	<i>0.157</i>				<i>0.752</i>	<i>0.906</i>	<i>0.630</i>	<i>0.472</i>
# P-025T-025-060FF-AL-G-040	25	6.4	4.000	Aluminium Alloy - Clear Anodised	Set Screw	2	19.89	23.0	16.00	13.00
		<i>0.252</i>	<i>0.157</i>				<i>0.783</i>	<i>0.906</i>	<i>0.630</i>	<i>0.512</i>
# P-025T-026-060FF-AL-G-040	26	6.4	4.000	Aluminium Alloy - Clear Anodised	Set Screw	2	20.68	25.5	16.00	14.00
		<i>0.252</i>	<i>0.157</i>				<i>0.814</i>	<i>1.004</i>	<i>0.630</i>	<i>0.551</i>
P-025T-028-060FF-AL-G-040	28	6.4	4.000	Aluminium Alloy - Clear Anodised	Set Screw	2	22.27	25.5	16.00	14.00
		<i>0.252</i>	<i>0.157</i>				<i>0.877</i>	<i>1.004</i>	<i>0.630</i>	<i>0.551</i>
P-025T-030-060FF-AL-G-060	30	6.4	6.000	Aluminium Alloy - Clear Anodised	Set Screw	2	23.86	26.0	16.00	16.00
		<i>0.252</i>	<i>0.236</i>				<i>0.939</i>	<i>1.024</i>	<i>0.630</i>	<i>0.630</i>
P-025T-032-060FF-AL-G-060	32	6.4	6.000	Aluminium Alloy - Clear Anodised	Set Screw	2	25.45	29.0	16.00	16.00
		<i>0.252</i>	<i>0.236</i>				<i>1.002</i>	<i>1.142</i>	<i>0.630</i>	<i>0.630</i>

# Indicates item not stocked at time of printing - Please enquire for lead time

Page 5 of 6

E&OE Pricing and all details subject to change without notice - Copyright Miniature Bearings Australia Pty Ltd

MBA Size Listings are a guide to sizes only and must not be solely relied on for critical design information.

## Pulleys - Timing - 2.500mm Pitch - T2.5 - 6.4mm Wide - Aluminium

Part Number	Teeth	Max Belt Width mm	Bore (d) mm	Material	Locking Type	Type (See Diagram)	Pitch Diameter (PD) mm	Flange Diameter (FD) mm	Overall Length (OL) mm	Hub Diameter (HD) mm
		<i>inches</i>	<i>inches</i>				<i>inches</i>	<i>inches</i>	<i>inches</i>	<i>inches</i>
P-025T-036-060FF-AL-G-060	36	6.4	6.000	Aluminium Alloy - Clear Anodised	Set Screw	2	28.64	36.0	16.00	20.00
		<i>0.252</i>	<i>0.236</i>				<i>1.128</i>	<i>1.417</i>	<i>0.630</i>	<i>0.787</i>
P-025T-040-060FF-AL-G-060	40	6.4	6.000	Aluminium Alloy - Clear Anodised	Set Screw	2	31.82	37.5	16.00	22.00
		<i>0.252</i>	<i>0.236</i>				<i>1.253</i>	<i>1.476</i>	<i>0.630</i>	<i>0.866</i>
# P-025T-044-060P-AL-N-060	44	6.4	6.000	Aluminium Alloy - Clear Anodised	No Locking Device	3	35.00	-	16.00	24.00
		<i>0.252</i>	<i>0.236</i>				<i>1.378</i>		<i>0.630</i>	<i>0.945</i>
# P-025T-048-060P-AL-N-060	48	6.4	6.000	Aluminium Alloy - Clear Anodised	No Locking Device	3	38.18	-	16.00	26.00
		<i>0.252</i>	<i>0.236</i>				<i>1.503</i>		<i>0.630</i>	<i>1.024</i>
# P-025T-060-060P-AL-N-080	60	6.4	8.000	Aluminium Alloy - Clear Anodised	No Locking Device	3	47.73	-	16.00	34.00
		<i>0.252</i>	<i>0.315</i>				<i>1.879</i>		<i>0.630</i>	<i>1.339</i>

# Indicates item not stocked at time of printing - Please enquire for lead time

Page 6 of 6

E&OE Pricing and all details subject to change without notice - Copyright Miniature Bearings Australia Pty Ltd

MBA Size Listings are a guide to sizes only and must not be solely relied on for critical design information.

DISTRIBUTED BY

Distributed By:

