



Pulleys - Timing - 3.000mm Pitch - GT - 15mm Wide - Aluminium

10/4/2018

Indicates item not stocked at time of printing - Please enquire for lead time

E&OE Pricing and all details subject to change without notice - Copyright Miniature Bearings Australia Pty Ltd

MBA Size Listings are a guide to sizes only and must not be solely relied on for critical design information.

Page 1 of 8

INFORMATION

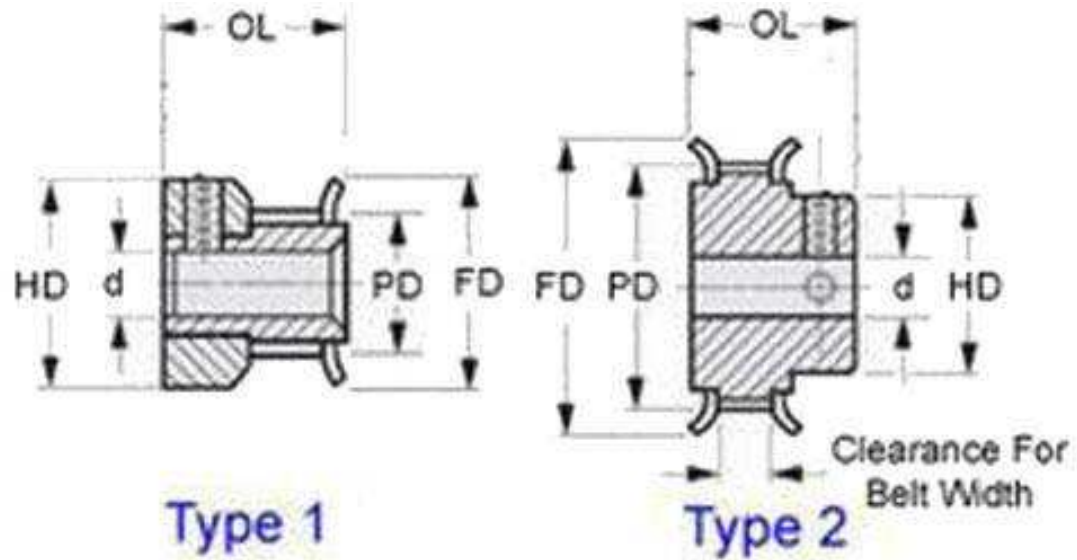
Timing Pulleys to suit GT 3.000mm Pitch Timing Belts 15mm Wide.

This catalogue to be read in conjunction with information at
<http://www.minibearings.com.au//partslist/beltstiming3000mmpitchgt15mmwide/beltstiming3000mmpitchgt15mmwide/A/1/>
<http://www.minibearings.com.au//partslist/beltstiming3000mmpitchgtdoublesided15mmwide/beltstiming3000mmpitchgtdoublesided15mmwide/A/1/>
<http://www.minibearings.com.au//www.smallparts.com.au/store/categories/easy+kits/>

Indicates item not stocked at time of printing - Please enquire for lead time

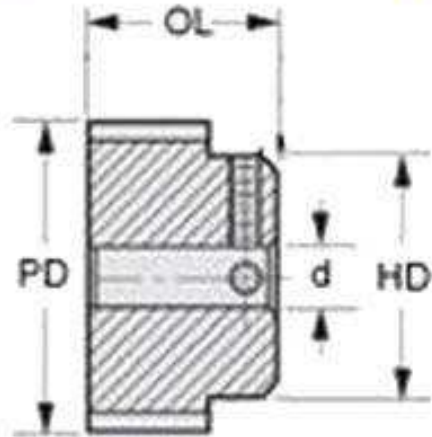
E&OE Pricing and all details subject to change without notice - Copyright Miniature Bearings Australia Pty Ltd

MBA Size Listings are a guide to sizes only and must not be solely relied on for critical design information.



Type 1

Type 2



Type 3

Indicates item not stocked at time of printing - Please enquire for lead time

E&OE Pricing and all details subject to change without notice - Copyright Miniature Bearings Australia Pty Ltd
 MBA Size Listings are a guide to sizes only and must not be solely relied on for critical design information.

Pulleys - Timing - 3.000mm Pitch - GT - 15mm Wide - Aluminium

Part Number	Teeth	Max Belt Width mm	Bore (d) mm	Material	Locking Type	Type (See Diagram)	Pitch Diameter (PD) mm	Flange Diameter (FD) mm	Overall Length (OL) mm	Hub Diameter (HD) mm
		<i>inches</i>	<i>inches</i>				<i>inches</i>	<i>inches</i>	<i>inches</i>	<i>inches</i>
# P-030G-016-150FH-AL-G-048	16	15	4.763	Aluminium Alloy - Clear Anodised	Set Screw	Double Flanged (Type 1)	15.27	18.03	23.6	18.03
		<i>0.591</i>	<i>0.188</i>				<i>0.601</i>	<i>0.710</i>	<i>0.929</i>	<i>0.710</i>
# P-030G-017-150FH-AL-G-048	17	15	4.763	Aluminium Alloy - Clear Anodised	Set Screw	Double Flanged (Type 1)	16.23	18.80	23.6	18.03
		<i>0.591</i>	<i>0.188</i>				<i>0.639</i>	<i>0.740</i>	<i>0.929</i>	<i>0.710</i>
# P-030G-018-150FF-AL-G-048	18	15	4.763	Aluminium Alloy - Clear Anodised	Set Screw	Double Flanged	17.18	20.07	26.9	11.23
		<i>0.591</i>	<i>0.188</i>				<i>0.676</i>	<i>0.790</i>	<i>1.059</i>	<i>0.442</i>
# P-030G-019-150FH-AL-G-048	19	15	4.763	Aluminium Alloy - Clear Anodised	Set Screw	Double Flanged (Type 1)	18.14	-	-	-
		<i>0.591</i>	<i>0.188</i>				<i>0.714</i>			
# P-030G-020-150FF-AL-G-048	20	15	4.763	Aluminium Alloy - Clear Anodised	Set Screw	Double Flanged	19.09	22.73	26.9	12.70
		<i>0.591</i>	<i>0.188</i>				<i>0.752</i>	<i>0.895</i>	<i>1.059</i>	<i>0.500</i>
# P-030G-021-150FF-AL-G-048	21	15	4.763	Aluminium Alloy - Clear Anodised	Set Screw	Double Flanged	20.04	22.73	26.9	12.70
		<i>0.591</i>	<i>0.188</i>				<i>0.789</i>	<i>0.895</i>	<i>1.059</i>	<i>0.500</i>
# P-030G-022-150FF-AL-G-048	22	15	4.763	Aluminium Alloy - Clear Anodised	Set Screw	Double Flanged	21.00	24.00	26.9	14.27
		<i>0.591</i>	<i>0.188</i>				<i>0.827</i>	<i>0.945</i>	<i>1.059</i>	<i>0.562</i>

Indicates item not stocked at time of printing - Please enquire for lead time

Page 4 of 8

E&OE Pricing and all details subject to change without notice - Copyright Miniature Bearings Australia Pty Ltd

MBA Size Listings are a guide to sizes only and must not be solely relied on for critical design information.

Pulleys - Timing - 3.000mm Pitch - GT - 15mm Wide - Aluminium

Part Number	Teeth	Max Belt Width mm	Bore (d) mm	Material	Locking Type	Type (See Diagram)	Pitch Diameter (PD) mm	Flange Diameter (FD) mm	Overall Length (OL) mm	Hub Diameter (HD) mm
		<i>inches</i>	<i>inches</i>				<i>inches</i>	<i>inches</i>	<i>inches</i>	<i>inches</i>
# P-030G-024-150FF-AL-G-064	24	15	6.35	Aluminium Alloy - Clear Anodised	Set Screw	Double Flanged	22.91	26.04	26.9	15.88
		<i>0.591</i>	<i>0.250</i>				<i>0.902</i>	<i>1.025</i>	<i>1.059</i>	<i>0.625</i>
# P-030G-025-150FF-AL-G-064	25	15	6.35	Aluminium Alloy - Clear Anodised	Set Screw	Double Flanged	23.86	26.92	26.9	15.88
		<i>0.591</i>	<i>0.250</i>				<i>0.939</i>	<i>1.060</i>	<i>1.059</i>	<i>0.625</i>
# P-030G-026-150FF-AL-G-064	26	15	6.35	Aluminium Alloy - Clear Anodised	Set Screw	Double Flanged	24.82	28.07	26.9	15.88
		<i>0.591</i>	<i>0.250</i>				<i>0.977</i>	<i>1.105</i>	<i>1.059</i>	<i>0.625</i>
# P-030G-028-150FF-AL-G-064	28	15	6.35	Aluminium Alloy - Clear Anodised	Set Screw	Double Flanged	26.73	29.79	26.9	17.81
		<i>0.591</i>	<i>0.250</i>				<i>1.052</i>	<i>1.173</i>	<i>1.059</i>	<i>0.701</i>
# P-030G-030-150FF-AL-G-064	30	15	6.35	Aluminium Alloy - Clear Anodised	Set Screw	Double Flanged	28.64	31.75	26.9	19.71
		<i>0.591</i>	<i>0.250</i>				<i>1.128</i>	<i>1.250</i>	<i>1.059</i>	<i>0.776</i>
# P-030G-032-150FF-AL-G-064	32	15	6.35	Aluminium Alloy - Clear Anodised	Set Screw	Double Flanged	30.54	33.60	26.9	21.62
		<i>0.591</i>	<i>0.250</i>				<i>1.202</i>	<i>1.323</i>	<i>1.059</i>	<i>0.851</i>
# P-030G-034-150FF-AL-G-064	34	15	6.35	Aluminium Alloy - Clear Anodised	Set Screw	Double Flanged	32.45	35.51	26.9	23.39
		<i>0.591</i>	<i>0.250</i>				<i>1.278</i>	<i>1.398</i>	<i>1.059</i>	<i>0.921</i>

Indicates item not stocked at time of printing - Please enquire for lead time

Page 5 of 8

E&OE Pricing and all details subject to change without notice - Copyright Miniature Bearings Australia Pty Ltd
MBA Size Listings are a guide to sizes only and must not be solely relied on for critical design information.

Pulleys - Timing - 3.000mm Pitch - GT - 15mm Wide - Aluminium

Part Number	Teeth	Max Belt Width mm	Bore (d) mm	Material	Locking Type	Type (See Diagram)	Pitch Diameter (PD) mm	Flange Diameter (FD) mm	Overall Length (OL) mm	Hub Diameter (HD) mm
		<i>inches</i>	<i>inches</i>				<i>inches</i>	<i>inches</i>	<i>inches</i>	<i>inches</i>
# P-030G-036-150FF-AL-G-064	36	15	6.35	Aluminium Alloy - Clear Anodised	Set Screw	Double Flanged	34.36	37.41	26.9	25.40
		<i>0.591</i>	<i>0.250</i>				<i>1.353</i>	<i>1.473</i>	<i>1.059</i>	<i>1.000</i>
# P-030G-038-150FF-AL-G-064	38	15	6.35	Aluminium Alloy - Clear Anodised	Set Screw	Double Flanged	36.27	39.34	26.9	27.31
		<i>0.591</i>	<i>0.250</i>				<i>1.428</i>	<i>1.549</i>	<i>1.059</i>	<i>1.075</i>
# P-030G-040-150FF-AL-G-064	40	15	6.35	Aluminium Alloy - Clear Anodised	Set Screw	Double Flanged	38.18	41.28	26.9	29.21
		<i>0.591</i>	<i>0.250</i>				<i>1.503</i>	<i>1.625</i>	<i>1.059</i>	<i>1.150</i>
# P-030G-044-150FF-AL-G-064	44	15	6.35	Aluminium Alloy - Clear Anodised	Set Screw	Double Flanged	42.00	45.09	26.9	33.02
		<i>0.591</i>	<i>0.250</i>				<i>1.654</i>	<i>1.775</i>	<i>1.059</i>	<i>1.300</i>
# P-030G-045-150FF-AL-G-064	45	15	6.35	Aluminium Alloy - Clear Anodised	Set Screw	Double Flanged	42.95	45.09	26.9	31.75
		<i>0.591</i>	<i>0.250</i>				<i>1.691</i>	<i>1.775</i>	<i>1.059</i>	<i>1.250</i>
# P-030G-048-150P-AL-G-079	48	15	7.938	Aluminium Alloy - Clear Anodised	Set Screw	No Flanges	45.82	-	28.2	31.75
		<i>0.591</i>	<i>0.313</i>				<i>1.804</i>		<i>1.110</i>	<i>1.250</i>
# P-030G-050-150P-AL-G-079	50	15	7.938	Aluminium Alloy - Clear Anodised	Set Screw	No Flanges	47.73	-	28.2	31.75
		<i>0.591</i>	<i>0.313</i>				<i>1.879</i>		<i>1.110</i>	<i>1.250</i>

Indicates item not stocked at time of printing - Please enquire for lead time

Page 6 of 8

E&OE Pricing and all details subject to change without notice - Copyright Miniature Bearings Australia Pty Ltd
MBA Size Listings are a guide to sizes only and must not be solely relied on for critical design information.

Pulleys - Timing - 3.000mm Pitch - GT - 15mm Wide - Aluminium

Part Number	Teeth	Max Belt Width mm	Bore (d) mm	Material	Locking Type	Type (See Diagram)	Pitch Diameter (PD) mm	Flange Diameter (FD) mm	Overall Length (OL) mm	Hub Diameter (HD) mm
		<i>inches</i>	<i>inches</i>				<i>inches</i>	<i>inches</i>	<i>inches</i>	<i>inches</i>
# P-030G-056-150P-AL-G-079	56	15	7.938	Aluminium Alloy - Clear Anodised	Set Screw	No Flanges	53.45	-	28.2	31.75
		<i>0.591</i>	<i>0.313</i>				<i>2.104</i>		<i>1.110</i>	<i>1.250</i>
# P-030G-060-150P-AL-G-079	60	15	7.938	Aluminium Alloy - Clear Anodised	Set Screw	No Flanges	57.27	-	28.2	31.75
		<i>0.591</i>	<i>0.313</i>				<i>2.255</i>		<i>1.110</i>	<i>1.250</i>
# P-030G-062-150P-AL-G-079	62	15	7.938	Aluminium Alloy - Clear Anodised	Set Screw	No Flanges	59.18	-	28.2	31.75
		<i>0.591</i>	<i>0.313</i>				<i>2.330</i>		<i>1.110</i>	<i>1.250</i>
# P-030G-072-150P-AL-G-079	72	15	7.938	Aluminium Alloy - Clear Anodised	Set Screw	No Flanges	68.72	-	28.2	31.75
		<i>0.591</i>	<i>0.313</i>				<i>2.706</i>		<i>1.110</i>	<i>1.250</i>
# P-030G-074-150P-AL-G-079	74	15	7.938	Aluminium Alloy - Clear Anodised	Set Screw	No Flanges	70.63	-	28.2	31.75
		<i>0.591</i>	<i>0.313</i>				<i>2.781</i>		<i>1.110</i>	<i>1.250</i>
# P-030G-080-150P-AL-G-079	80	15	7.938	Aluminium Alloy - Clear Anodised	Set Screw	No Flanges	76.36	-	28.2	31.75
		<i>0.591</i>	<i>0.313</i>				<i>3.006</i>		<i>1.110</i>	<i>1.250</i>
# P-030G-090-150P-AL-G-079	90	15	7.938	Aluminium Alloy - Clear Anodised	Set Screw	No Flanges	85.91	-	28.2	31.75
		<i>0.591</i>	<i>0.313</i>				<i>3.382</i>		<i>1.110</i>	<i>1.250</i>

Indicates item not stocked at time of printing - Please enquire for lead time

Page 7 of 8

E&OE Pricing and all details subject to change without notice - Copyright Miniature Bearings Australia Pty Ltd
MBA Size Listings are a guide to sizes only and must not be solely relied on for critical design information.

Pulleys - Timing - 3.000mm Pitch - GT - 15mm Wide - Aluminium

Part Number	Teeth	Max Belt Width mm	Bore (d) mm	Material	Locking Type	Type (See Diagram)	Pitch Diameter (PD) mm	Flange Diameter (FD) mm	Overall Length (OL) mm	Hub Diameter (HD) mm
# P-030G-100-150P-AL-G-079	100	15	7.938	Aluminium Alloy - Clear Anodised	Set Screw	No Flanges	95.45	-	28.2	31.75
		<i>0.591</i>	<i>0.313</i>				<i>3.758</i>		<i>1.110</i>	<i>1.250</i>
# P-030G-120-150P-AL-G-079	120	15	7.938	Aluminium Alloy - Clear Anodised	Set Screw	No Flanges	114.54	-	28.2	31.75
		<i>0.591</i>	<i>0.313</i>				<i>4.509</i>		<i>1.110</i>	<i>1.250</i>

Indicates item not stocked at time of printing - Please enquire for lead time

Page 8 of 8

E&OE Pricing and all details subject to change without notice - Copyright Miniature Bearings Australia Pty Ltd
MBA Size Listings are a guide to sizes only and must not be solely relied on for critical design information.

DISTRIBUTED BY

Distributed By:

