



# **Pulleys - Timing - 3.000mm Pitch - GT - 9mm Wide - Aluminium**

10/4/2018

# Indicates item not stocked at time of printing - Please enquire for lead time

E&OE Pricing and all details subject to change without notice - Copyright Miniature Bearings Australia Pty Ltd

MBA Size Listings are a guide to sizes only and must not be solely relied on for critical design information.

Page 1 of 30

## INFORMATION

Timing Pulleys to suit GT 3.000mm Pitch Timing Belts 9mm Wide.

This catalogue to be read in conjunction with information at

<http://www.minibearings.com.au//partslist/beltstiming3000mmpitchgt9mmwide/beltstiming3000mmpitchgt9mmwide/A/1/>

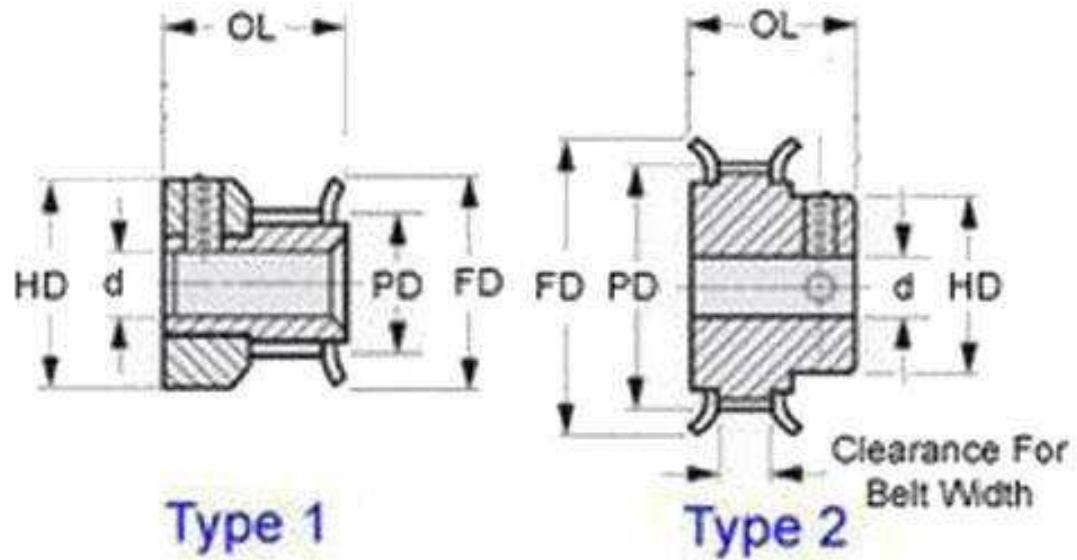
<http://www.minibearings.com.au//partslist/beltstiming3000mmpitchgtdoublesided9mmwide/beltstiming3000mmpitchgtdoublesided9mmwide/A/1/>

<http://www.minibearings.com.au//partslist/beltstiming3000mmpitchgttrmotion9mmwide/beltstiming3000mmpitchgttrmotion9mmwide/A/1/>

# Indicates item not stocked at time of printing - Please enquire for lead time

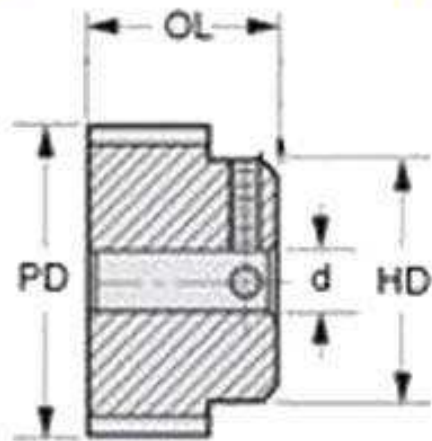
E&OE Pricing and all details subject to change without notice - Copyright Miniature Bearings Australia Pty Ltd

MBA Size Listings are a guide to sizes only and must not be solely relied on for critical design information.



Type 1

Type 2



Type 3

# Indicates item not stocked at time of printing - Please enquire for lead time

E&OE Pricing and all details subject to change without notice - Copyright Miniature Bearings Australia Pty Ltd

MBA Size Listings are a guide to sizes only and must not be solely relied on for critical design information.

## Pulleys - Timing - 3.000mm Pitch - GT - 9mm Wide - Aluminium

Part Number	Teeth	Max Belt Width mm	Bore (d) mm	Material	Locking Type	Type (See Diagram)	Pitch Diameter (PD) mm	Flange Diameter (FD) mm	Overall Length (OL) mm	Hub Diameter (HD) mm
		<i>inches</i>	<i>inches</i>				<i>inches</i>	<i>inches</i>	<i>inches</i>	<i>inches</i>
# P-030G-016-090FH-AL-G-048	16	9.6	4.763	Aluminium Alloy - Clear Anodised	Set Screw	1	15.27	18.3	17.46	18.34
		<i>0.378</i>	<i>0.188</i>				<i>0.601</i>	<i>0.720</i>	<i>0.687</i>	<i>0.722</i>
P-030G-016-090FH-AL-G-060	16	9.6	6.000	Aluminium Alloy - Clear Anodised	Set Screw	1	15.27	18.0	17.50	18.00
		<i>0.378</i>	<i>0.236</i>				<i>0.601</i>	<i>0.709</i>	<i>0.689</i>	<i>0.709</i>
# P-030G-017-090FH-AL-G-048	17	9.6	4.763	Aluminium Alloy - Clear Anodised	Set Screw	1	16.23	18.8	17.46	18.80
		<i>0.378</i>	<i>0.188</i>				<i>0.639</i>	<i>0.740</i>	<i>0.687</i>	<i>0.740</i>
# P-030G-017-090FH-AL-G-060	17	9.6	6.000	Aluminium Alloy - Clear Anodised	Set Screw	1	16.23	18.8	17.50	18.80
		<i>0.378</i>	<i>0.236</i>				<i>0.639</i>	<i>0.740</i>	<i>0.689</i>	<i>0.740</i>
P-030G-018-090FF-AL-G-060	18	9.6	6.000	Aluminium Alloy - Clear Anodised	Set Screw	2	17.18	20.0	20.60	11.20
		<i>0.378</i>	<i>0.236</i>				<i>0.676</i>	<i>0.787</i>	<i>0.811</i>	<i>0.441</i>
# P-030G-018-090FH-AL-FL-060	18	9.6	6.000	Aluminium Alloy - Clear Anodised	Fairloc Hub - tm-	1	17.18	20.0	20.60	19.10
		<i>0.378</i>	<i>0.236</i>				<i>0.676</i>	<i>0.787</i>	<i>0.811</i>	<i>0.752</i>
# P-030G-018-090FF-AL-G-064	18	9.6	6.350	Aluminium Alloy - Clear Anodised	Set Screw	2	17.18	20.7	20.64	11.23
		<i>0.378</i>	<i>0.250</i>				<i>0.676</i>	<i>0.815</i>	<i>0.813</i>	<i>0.442</i>

# Indicates item not stocked at time of printing - Please enquire for lead time

Page 4 of 30

E&OE Pricing and all details subject to change without notice - Copyright Miniature Bearings Australia Pty Ltd  
MBA Size Listings are a guide to sizes only and must not be solely relied on for critical design information.

## Pulleys - Timing - 3.000mm Pitch - GT - 9mm Wide - Aluminium

Part Number	Teeth	Max Belt Width mm	Bore (d) mm	Material	Locking Type	Type (See Diagram)	Pitch Diameter (PD) mm	Flange Diameter (FD) mm	Overall Length (OL) mm	Hub Diameter (HD) mm
		<i>inches</i>	<i>inches</i>				<i>inches</i>	<i>inches</i>	<i>inches</i>	<i>inches</i>
# P-030G-018-090FH-AL-FL-064	18	9.6	6.350	Aluminium Alloy - Clear Anodised	Fairloc Hub - tm-	1	17.18	20.7	20.64	19.50
		<i>0.378</i>	<i>0.250</i>				<i>0.676</i>	<i>0.815</i>	<i>0.813</i>	<i>0.768</i>
# P-030G-019-090FF-AL-G-060	19	9.6	6.000	Aluminium Alloy - Clear Anodised	Set Screw	2	18.14	20.7	20.60	11.90
		<i>0.378</i>	<i>0.236</i>				<i>0.714</i>	<i>0.815</i>	<i>0.811</i>	<i>0.469</i>
# P-030G-019-090FF-AL-G-064	19	9.6	6.350	Aluminium Alloy - Clear Anodised	Set Screw	2	18.14	20.7	20.64	11.89
		<i>0.378</i>	<i>0.250</i>				<i>0.714</i>	<i>0.815</i>	<i>0.813</i>	<i>0.468</i>
# P-030G-020-090FF-AL-CL-030	20	9.6	3.000	Aluminium Alloy - Clear Anodised	Cap Screw Clamp	Double Flange	19	23	20	10
		<i>0.378</i>	<i>0.118</i>				<i>0.748</i>	<i>0.906</i>	<i>0.787</i>	<i>0.394</i>
P-030G-020-090FF-AL-G-060	20	9.6	6.000	Aluminium Alloy - Clear Anodised	Set Screw	2	19.09	22.7	20.60	12.70
		<i>0.378</i>	<i>0.236</i>				<i>0.752</i>	<i>0.894</i>	<i>0.811</i>	<i>0.500</i>
# P-030G-020-090FH-AL-FL-060	20	9.6	6.000	Aluminium Alloy - Clear Anodised	Fairloc Hub - tm-	1	19.09	22.7	20.60	19.10
		<i>0.378</i>	<i>0.236</i>				<i>0.752</i>	<i>0.894</i>	<i>0.811</i>	<i>0.752</i>
# P-030G-020-090FH-AL-FL-064	20	9.6	6.350	Aluminium Alloy - Clear Anodised	Fairloc Hub - tm-	1	19.09	22.7	20.64	19.50
		<i>0.378</i>	<i>0.250</i>				<i>0.752</i>	<i>0.894</i>	<i>0.813</i>	<i>0.768</i>

# Indicates item not stocked at time of printing - Please enquire for lead time

Page 5 of 30

E&OE Pricing and all details subject to change without notice - Copyright Miniature Bearings Australia Pty Ltd  
MBA Size Listings are a guide to sizes only and must not be solely relied on for critical design information.

## Pulleys - Timing - 3.000mm Pitch - GT - 9mm Wide - Aluminium

Part Number	Teeth	Max Belt Width mm	Bore (d) mm	Material	Locking Type	Type (See Diagram)	Pitch Diameter (PD) mm	Flange Diameter (FD) mm	Overall Length (OL) mm	Hub Diameter (HD) mm
		<i>inches</i>	<i>inches</i>				<i>inches</i>	<i>inches</i>	<i>inches</i>	<i>inches</i>
# P-030G-020-090FF-AL-G-064	20	9.6	6.350	Aluminium Alloy - Clear Anodised	Set Screw	2	19.09	22.7	20.64	12.70
		<i>0.378</i>	<i>0.250</i>				<i>0.752</i>	<i>0.894</i>	<i>0.813</i>	<i>0.500</i>
# P-030G-021-090FF-AL-CL-030	21	9.6	3.000	Aluminium Alloy - Clear Anodised	Cap Screw Clamp	Double Flange	20	24	21	12
		<i>0.378</i>	<i>0.118</i>				<i>0.787</i>	<i>0.945</i>	<i>0.827</i>	<i>0.472</i>
# P-030G-021-090FF-AL-CL-040	21	9.6	4.000	Aluminium Alloy - Clear Anodised	Cap Screw Clamp	Double Flange	20	24	21	12
		<i>0.378</i>	<i>0.157</i>				<i>0.787</i>	<i>0.945</i>	<i>0.827</i>	<i>0.472</i>
# P-030G-021-090FF-AL-CL-050	21	9.6	5.000	Aluminium Alloy - Clear Anodised	Cap Screw Clamp	Double Flange	20	24	21	12
		<i>0.378</i>	<i>0.197</i>				<i>0.787</i>	<i>0.945</i>	<i>0.827</i>	<i>0.472</i>
# P-030G-021-090FF-AL-G-060	21	9.6	6.000	Aluminium Alloy - Clear Anodised	Set Screw	2	20.05	22.7	20.60	12.70
		<i>0.378</i>	<i>0.236</i>				<i>0.789</i>	<i>0.894</i>	<i>0.811</i>	<i>0.500</i>
# P-030G-021-090FF-AL-G-064	21	9.6	6.350	Aluminium Alloy - Clear Anodised	Set Screw	2	20.05	22.7	20.64	12.70
		<i>0.378</i>	<i>0.250</i>				<i>0.789</i>	<i>0.894</i>	<i>0.813</i>	<i>0.500</i>
# P-030G-022-090FF-AL-CL-030	22	9.6	3.000	Aluminium Alloy - Clear Anodised	Cap Screw Clamp	Double Flange	21	24	21	12
		<i>0.378</i>	<i>0.118</i>				<i>0.827</i>	<i>0.945</i>	<i>0.827</i>	<i>0.472</i>

# Indicates item not stocked at time of printing - Please enquire for lead time

Page 6 of 30

E&OE Pricing and all details subject to change without notice - Copyright Miniature Bearings Australia Pty Ltd

MBA Size Listings are a guide to sizes only and must not be solely relied on for critical design information.

## Pulleys - Timing - 3.000mm Pitch - GT - 9mm Wide - Aluminium

Part Number	Teeth	Max Belt Width mm	Bore (d) mm	Material	Locking Type	Type (See Diagram)	Pitch Diameter (PD) mm	Flange Diameter (FD) mm	Overall Length (OL) mm	Hub Diameter (HD) mm
		<i>inches</i>	<i>inches</i>				<i>inches</i>	<i>inches</i>	<i>inches</i>	<i>inches</i>
# P-030G-022-090FF-AL-CL-040	22	9.6	4.000	Aluminium Alloy - Clear Anodised	Cap Screw Clamp	Double Flange	21	24	21	12
		<i>0.378</i>	<i>0.157</i>				<i>0.827</i>	<i>0.945</i>	<i>0.827</i>	<i>0.472</i>
# P-030G-022-090FF-AL-CL-050	22	9.6	5.000	Aluminium Alloy - Clear Anodised	Cap Screw Clamp	Double Flange	21	24	21	12
		<i>0.378</i>	<i>0.197</i>				<i>0.827</i>	<i>0.945</i>	<i>0.827</i>	<i>0.472</i>
# P-030G-022-090FF-AL-G-060	22	9.6	6.000	Aluminium Alloy - Clear Anodised	Set Screw	2	21.00	24.0	20.60	14.30
		<i>0.378</i>	<i>0.236</i>				<i>0.827</i>	<i>0.945</i>	<i>0.811</i>	<i>0.563</i>
# P-030G-022-090FH-AL-FL-060	22	9.6	6.000	Aluminium Alloy - Clear Anodised	Fairloc Hub - tm-	1	21.00	24.0	20.60	19.10
		<i>0.378</i>	<i>0.236</i>				<i>0.827</i>	<i>0.945</i>	<i>0.811</i>	<i>0.752</i>
# P-030G-022-090FF-AL-G-064	22	9.6	6.350	Aluminium Alloy - Clear Anodised	Set Screw	2	21.00	24.3	20.64	14.28
		<i>0.378</i>	<i>0.250</i>				<i>0.827</i>	<i>0.957</i>	<i>0.813</i>	<i>0.562</i>
# P-030G-022-090FH-AL-FL-064	22	9.6	6.350	Aluminium Alloy - Clear Anodised	Fairloc Hub - tm-	1	21.00	24.3	20.64	19.50
		<i>0.378</i>	<i>0.250</i>				<i>0.827</i>	<i>0.957</i>	<i>0.813</i>	<i>0.768</i>
# P-030G-024-090FF-AL-CL-030	24	9.6	3.000	Aluminium Alloy - Clear Anodised	Cap Screw Clamp	Double Flange	23	26	21	14
		<i>0.378</i>	<i>0.118</i>				<i>0.906</i>	<i>1.024</i>	<i>0.827</i>	<i>0.551</i>

# Indicates item not stocked at time of printing - Please enquire for lead time

Page 7 of 30

E&OE Pricing and all details subject to change without notice - Copyright Miniature Bearings Australia Pty Ltd

MBA Size Listings are a guide to sizes only and must not be solely relied on for critical design information.

## Pulleys - Timing - 3.000mm Pitch - GT - 9mm Wide - Aluminium

Part Number	Teeth	Max Belt Width mm	Bore (d) mm	Material	Locking Type	Type (See Diagram)	Pitch Diameter (PD) mm	Flange Diameter (FD) mm	Overall Length (OL) mm	Hub Diameter (HD) mm
		<i>inches</i>	<i>inches</i>				<i>inches</i>	<i>inches</i>	<i>inches</i>	<i>inches</i>
# P-030G-024-090FF-AL-CL-040	24	9.6	4.000	Aluminium Alloy - Clear Anodised	Cap Screw Clamp	Double Flange	23	26	21	14
		<i>0.378</i>	<i>0.157</i>				<i>0.906</i>	<i>1.024</i>	<i>0.827</i>	<i>0.551</i>
# P-030G-024-090FF-AL-CL-050	24	9.6	5.000	Aluminium Alloy - Clear Anodised	Cap Screw Clamp	Double Flange	23	26	21	14
		<i>0.378</i>	<i>0.197</i>				<i>0.906</i>	<i>1.024</i>	<i>0.827</i>	<i>0.551</i>
# P-030G-024-090FF-AL-CL-060	24	9.6	6.000	Aluminium Alloy - Clear Anodised	Cap Screw Clamp	Double Flange	23	26	21	14
		<i>0.378</i>	<i>0.236</i>				<i>0.906</i>	<i>1.024</i>	<i>0.827</i>	<i>0.551</i>
# P-030G-024-090FF-AL-G-060	24	9.6	6.000	Aluminium Alloy - Clear Anodised	Set Screw	2	22.91	26.0	20.60	15.90
		<i>0.378</i>	<i>0.236</i>				<i>0.902</i>	<i>1.024</i>	<i>0.811</i>	<i>0.626</i>
# P-030G-024-090FH-AL-FL-060	24	9.6	6.000	Aluminium Alloy - Clear Anodised	Fairloc Hub - tm-	1	22.91	26.0	20.60	19.10
		<i>0.378</i>	<i>0.236</i>				<i>0.902</i>	<i>1.024</i>	<i>0.811</i>	<i>0.752</i>
# P-030G-024-090FF-AL-G-064	24	9.6	6.350	Aluminium Alloy - Clear Anodised	Set Screw	2	22.91	26.4	20.64	15.88
		<i>0.378</i>	<i>0.250</i>				<i>0.902</i>	<i>1.039</i>	<i>0.813</i>	<i>0.625</i>
# P-030G-024-090FH-AL-FL-064	24	9.6	6.350	Aluminium Alloy - Clear Anodised	Fairloc Hub - tm-	1	22.91	31.8	20.64	19.50
		<i>0.378</i>	<i>0.250</i>				<i>0.902</i>	<i>1.252</i>	<i>0.813</i>	<i>0.768</i>

# Indicates item not stocked at time of printing - Please enquire for lead time

Page 8 of 30

E&OE Pricing and all details subject to change without notice - Copyright Miniature Bearings Australia Pty Ltd

MBA Size Listings are a guide to sizes only and must not be solely relied on for critical design information.



## Pulleys - Timing - 3.000mm Pitch - GT - 9mm Wide - Aluminium

Part Number	Teeth	Max Belt Width mm	Bore (d) mm	Material	Locking Type	Type (See Diagram)	Pitch Diameter (PD) mm	Flange Diameter (FD) mm	Overall Length (OL) mm	Hub Diameter (HD) mm
		<i>inches</i>	<i>inches</i>				<i>inches</i>	<i>inches</i>	<i>inches</i>	<i>inches</i>
# P-030G-025-090FF-AL-CL-030	25	9.6	3.000	Aluminium Alloy - Clear Anodised	Cap Screw Clamp	Double Flange	24	27	21	14
		<i>0.378</i>	<i>0.118</i>				<i>0.945</i>	<i>1.063</i>	<i>0.827</i>	<i>0.551</i>
# P-030G-025-090FF-AL-CL-040	25	9.6	4.000	Aluminium Alloy - Clear Anodised	Cap Screw Clamp	Double Flange	24	27	21	14
		<i>0.378</i>	<i>0.157</i>				<i>0.945</i>	<i>1.063</i>	<i>0.827</i>	<i>0.551</i>
# P-030G-025-090FF-AL-CL-050	25	9.6	5.000	Aluminium Alloy - Clear Anodised	Cap Screw Clamp	Double Flange	24	27	21	14
		<i>0.378</i>	<i>0.197</i>				<i>0.945</i>	<i>1.063</i>	<i>0.827</i>	<i>0.551</i>
# P-030G-025-090FF-AL-CL-060	25	9.6	6.000	Aluminium Alloy - Clear Anodised	Cap Screw Clamp	Double Flange	24	27	21	14
		<i>0.378</i>	<i>0.236</i>				<i>0.945</i>	<i>1.063</i>	<i>0.827</i>	<i>0.551</i>
# P-030G-025-090FF-AL-G-060	25	9.6	6.000	Aluminium Alloy - Clear Anodised	Set Screw	2	23.86	26.9	20.60	15.90
		<i>0.378</i>	<i>0.236</i>				<i>0.939</i>	<i>1.059</i>	<i>0.811</i>	<i>0.626</i>
# P-030G-025-090FH-AL-FL-060	25	9.6	6.000	Aluminium Alloy - Clear Anodised	Fairloc Hub - tm-	1	23.86	26.9	20.60	19.10
		<i>0.378</i>	<i>0.236</i>				<i>0.939</i>	<i>1.059</i>	<i>0.811</i>	<i>0.752</i>
P-030G-025-090FF-AL-G-064	25	9.6	6.350	Aluminium Alloy - Clear Anodised	Set Screw	2	23.86	26.9	20.64	15.88
		<i>0.378</i>	<i>0.250</i>				<i>0.939</i>	<i>1.059</i>	<i>0.813</i>	<i>0.625</i>

# Indicates item not stocked at time of printing - Please enquire for lead time

Page 9 of 30

E&OE Pricing and all details subject to change without notice - Copyright Miniature Bearings Australia Pty Ltd

MBA Size Listings are a guide to sizes only and must not be solely relied on for critical design information.

## Pulleys - Timing - 3.000mm Pitch - GT - 9mm Wide - Aluminium

Part Number	Teeth	Max Belt Width mm	Bore (d) mm	Material	Locking Type	Type (See Diagram)	Pitch Diameter (PD) mm	Flange Diameter (FD) mm	Overall Length (OL) mm	Hub Diameter (HD) mm
		<i>inches</i>	<i>inches</i>				<i>inches</i>	<i>inches</i>	<i>inches</i>	<i>inches</i>
# P-030G-025-090FH-AL-FL-064	25	9.6	6.350	Aluminium Alloy - Clear Anodised	Fairloc Hub - tm-	1	23.86	26.9	20.64	19.50
		<i>0.378</i>	<i>0.250</i>				<i>0.939</i>	<i>1.059</i>	<i>0.813</i>	<i>0.768</i>
# P-030G-026-090FF-AL-CL-030	26	9.6	3.000	Aluminium Alloy - Clear Anodised	Cap Screw Clamp	Double Flange	25	28	21	14
		<i>0.378</i>	<i>0.118</i>				<i>0.984</i>	<i>1.102</i>	<i>0.827</i>	<i>0.551</i>
# P-030G-026-090FF-AL-CL-040	26	9.6	4.000	Aluminium Alloy - Clear Anodised	Cap Screw Clamp	Double Flange	25	28	21	14
		<i>0.378</i>	<i>0.157</i>				<i>0.984</i>	<i>1.102</i>	<i>0.827</i>	<i>0.551</i>
# P-030G-026-090FF-AL-CL-050	26	9.6	5.000	Aluminium Alloy - Clear Anodised	Cap Screw Clamp	Double Flange	25	28	21	14
		<i>0.378</i>	<i>0.197</i>				<i>0.984</i>	<i>1.102</i>	<i>0.827</i>	<i>0.551</i>
# P-030G-026-090FF-AL-CL-060	26	9.6	6.000	Aluminium Alloy - Clear Anodised	Cap Screw Clamp	Double Flange	25	28	21	14
		<i>0.378</i>	<i>0.236</i>				<i>0.984</i>	<i>1.102</i>	<i>0.827</i>	<i>0.551</i>
# P-030G-026-090FH-AL-FL-060	26	9.6	6.000	Aluminium Alloy - Clear Anodised	Fairloc Hub - tm-	1	24.82	28.1	20.60	19.10
		<i>0.378</i>	<i>0.236</i>				<i>0.977</i>	<i>1.106</i>	<i>0.811</i>	<i>0.752</i>
P-030G-026-090FF-AL-G-060	26	9.6	6.000	Aluminium Alloy - Clear Anodised	Set Screw	2	24.82	28.1	20.60	15.90
		<i>0.378</i>	<i>0.236</i>				<i>0.977</i>	<i>1.106</i>	<i>0.811</i>	<i>0.626</i>

# Indicates item not stocked at time of printing - Please enquire for lead time

Page 10 of 30

E&OE Pricing and all details subject to change without notice - Copyright Miniature Bearings Australia Pty Ltd  
MBA Size Listings are a guide to sizes only and must not be solely relied on for critical design information.

## Pulleys - Timing - 3.000mm Pitch - GT - 9mm Wide - Aluminium

Part Number	Teeth	Max Belt Width mm	Bore (d) mm	Material	Locking Type	Type (See Diagram)	Pitch Diameter (PD) mm	Flange Diameter (FD) mm	Overall Length (OL) mm	Hub Diameter (HD) mm
		<i>inches</i>	<i>inches</i>				<i>inches</i>	<i>inches</i>	<i>inches</i>	<i>inches</i>
# P-030G-026-090FF-AL-G-064	26	9.6	6.350	Aluminium Alloy - Clear Anodised	Set Screw	2	24.82	28.7	20.64	15.88
		<i>0.378</i>	<i>0.250</i>				<i>0.977</i>	<i>1.130</i>	<i>0.813</i>	<i>0.625</i>
# P-030G-026-090FH-AL-FL-064	26	9.6	6.350	Aluminium Alloy - Clear Anodised	Fairloc Hub - tm-	1	24.82	28.7	20.64	19.50
		<i>0.378</i>	<i>0.250</i>				<i>0.977</i>	<i>1.130</i>	<i>0.813</i>	<i>0.768</i>
# P-030G-028-090FF-AL-CL-030	28	9.6	3.000	Aluminium Alloy - Clear Anodised	Cap Screw Clamp	Double Flange	27	30	21	14
		<i>0.378</i>	<i>0.118</i>				<i>1.063</i>	<i>1.181</i>	<i>0.827</i>	<i>0.551</i>
# P-030G-028-090FF-AL-CL-040	28	9.6	4.000	Aluminium Alloy - Clear Anodised	Cap Screw Clamp	Double Flange	27	30	21	14
		<i>0.378</i>	<i>0.157</i>				<i>1.063</i>	<i>1.181</i>	<i>0.827</i>	<i>0.551</i>
# P-030G-028-090FF-AL-CL-050	28	9.6	5.000	Aluminium Alloy - Clear Anodised	Cap Screw Clamp	Double Flange	27	30	21	14
		<i>0.378</i>	<i>0.197</i>				<i>1.063</i>	<i>1.181</i>	<i>0.827</i>	<i>0.551</i>
# P-030G-028-090FF-AL-CL-060	28	9.6	6.000	Aluminium Alloy - Clear Anodised	Cap Screw Clamp	Double Flange	27	30	21	14
		<i>0.378</i>	<i>0.236</i>				<i>1.063</i>	<i>1.181</i>	<i>0.827</i>	<i>0.551</i>
# P-030G-028-090FF-AL-G-060	28	9.6	6.000	Aluminium Alloy - Clear Anodised	Set Screw	2	26.73	29.8	20.60	17.80
		<i>0.378</i>	<i>0.236</i>				<i>1.052</i>	<i>1.173</i>	<i>0.811</i>	<i>0.701</i>

# Indicates item not stocked at time of printing - Please enquire for lead time

Page 11 of 30

E&OE Pricing and all details subject to change without notice - Copyright Miniature Bearings Australia Pty Ltd  
MBA Size Listings are a guide to sizes only and must not be solely relied on for critical design information.

## Pulleys - Timing - 3.000mm Pitch - GT - 9mm Wide - Aluminium

Part Number	Teeth	Max Belt Width mm	Bore (d) mm	Material	Locking Type	Type (See Diagram)	Pitch Diameter (PD) mm	Flange Diameter (FD) mm	Overall Length (OL) mm	Hub Diameter (HD) mm
		<i>inches</i>	<i>inches</i>				<i>inches</i>	<i>inches</i>	<i>inches</i>	<i>inches</i>
# P-030G-028-090FF-AL-G-064	28	9.6	6.350	Aluminium Alloy - Clear Anodised	Set Screw	2	26.73	29.8	20.64	17.85
		<i>0.378</i>	<i>0.250</i>				<i>1.052</i>	<i>1.173</i>	<i>0.813</i>	<i>0.703</i>
# P-030G-030-090FF-AL-CL-050	30	9.6	5.000	Aluminium Alloy - Clear Anodised	Cap Screw Clamp	Double Flange	29	32	22	20
		<i>0.378</i>	<i>0.197</i>				<i>1.142</i>	<i>1.260</i>	<i>0.866</i>	<i>0.787</i>
# P-030G-030-090FF-AL-CL-060	30	9.6	6.000	Aluminium Alloy - Clear Anodised	Cap Screw Clamp	Double Flange	29	32	22	20
		<i>0.378</i>	<i>0.236</i>				<i>1.142</i>	<i>1.260</i>	<i>0.866</i>	<i>0.787</i>
# P-030G-030-090FF-AL-G-060	30	9.6	6.000	Aluminium Alloy - Clear Anodised	Set Screw	2	28.64	31.8	20.60	19.70
		<i>0.378</i>	<i>0.236</i>				<i>1.128</i>	<i>1.252</i>	<i>0.811</i>	<i>0.776</i>
# P-030G-030-090FF-AL-FL-060	30	9.6	6.000	Aluminium Alloy - Clear Anodised	Fairloc Hub - tm-	2	28.64	31.8	20.60	19.10
		<i>0.378</i>	<i>0.236</i>				<i>1.128</i>	<i>1.252</i>	<i>0.811</i>	<i>0.752</i>
# P-030G-030-090FF-AL-G-064	30	9.6	6.350	Aluminium Alloy - Clear Anodised	Set Screw	2	28.64	31.8	20.64	19.71
		<i>0.378</i>	<i>0.250</i>				<i>1.128</i>	<i>1.252</i>	<i>0.813</i>	<i>0.776</i>
# P-030G-030-090FF-AL-FL-064	30	9.6	6.350	Aluminium Alloy - Clear Anodised	Fairloc Hub - tm-	2	28.64	31.8	20.64	19.50
		<i>0.378</i>	<i>0.250</i>				<i>1.128</i>	<i>1.252</i>	<i>0.813</i>	<i>0.768</i>

# Indicates item not stocked at time of printing - Please enquire for lead time

Page 12 of 30

E&OE Pricing and all details subject to change without notice - Copyright Miniature Bearings Australia Pty Ltd

MBA Size Listings are a guide to sizes only and must not be solely relied on for critical design information.

## Pulleys - Timing - 3.000mm Pitch - GT - 9mm Wide - Aluminium

Part Number	Teeth	Max Belt Width mm	Bore (d) mm	Material	Locking Type	Type (See Diagram)	Pitch Diameter (PD) mm	Flange Diameter (FD) mm	Overall Length (OL) mm	Hub Diameter (HD) mm
		<i>inches</i>	<i>inches</i>				<i>inches</i>	<i>inches</i>	<i>inches</i>	<i>inches</i>
# P-030G-030-090FF-AL-CL-080	30	9.6	8.000	Aluminium Alloy - Clear Anodised	Cap Screw Clamp	Double Flange	29	32	22	20
		<i>0.378</i>	<i>0.315</i>				<i>1.142</i>	<i>1.260</i>	<i>0.866</i>	<i>0.787</i>
# P-030G-030-090FF-AL-CL-100	30	9.6	10.000	Aluminium Alloy - Clear Anodised	Cap Screw Clamp	Double Flange	29	32	22	20
		<i>0.378</i>	<i>0.394</i>				<i>1.142</i>	<i>1.260</i>	<i>0.866</i>	<i>0.787</i>
# P-030G-032-090FF-AL-CL-050	32	9.6	5.000	Aluminium Alloy - Clear Anodised	Cap Screw Clamp	Double Flange	31	34	22	20
		<i>0.378</i>	<i>0.197</i>				<i>1.220</i>	<i>1.339</i>	<i>0.866</i>	<i>0.787</i>
# P-030G-032-090FF-AL-FL-060	32	9.6	6.000	Aluminium Alloy - Clear Anodised	Fairloc Hub - tm-	2	30.55	33.6	20.60	19.10
		<i>0.378</i>	<i>0.236</i>				<i>1.203</i>	<i>1.323</i>	<i>0.811</i>	<i>0.752</i>
# P-030G-032-090FF-AL-CL-060	32	9.6	6.000	Aluminium Alloy - Clear Anodised	Cap Screw Clamp	Double Flange	31	34	22	20
		<i>0.378</i>	<i>0.236</i>				<i>1.220</i>	<i>1.339</i>	<i>0.866</i>	<i>0.787</i>
# P-030G-032-090FF-AL-G-060	32	9.6	6.000	Aluminium Alloy - Clear Anodised	Set Screw	2	30.55	33.6	20.60	21.60
		<i>0.378</i>	<i>0.236</i>				<i>1.203</i>	<i>1.323</i>	<i>0.811</i>	<i>0.850</i>
# P-030G-032-090FF-AL-FL-064	32	9.6	6.350	Aluminium Alloy - Clear Anodised	Fairloc Hub - tm-	2	30.55	33.6	20.64	19.50
		<i>0.378</i>	<i>0.250</i>				<i>1.203</i>	<i>1.323</i>	<i>0.813</i>	<i>0.768</i>

# Indicates item not stocked at time of printing - Please enquire for lead time

Page 13 of 30

E&OE Pricing and all details subject to change without notice - Copyright Miniature Bearings Australia Pty Ltd  
MBA Size Listings are a guide to sizes only and must not be solely relied on for critical design information.

## Pulleys - Timing - 3.000mm Pitch - GT - 9mm Wide - Aluminium

Part Number	Teeth	Max Belt Width mm	Bore (d) mm	Material	Locking Type	Type (See Diagram)	Pitch Diameter (PD) mm	Flange Diameter (FD) mm	Overall Length (OL) mm	Hub Diameter (HD) mm
		<i>inches</i>	<i>inches</i>				<i>inches</i>	<i>inches</i>	<i>inches</i>	<i>inches</i>
# P-030G-032-090FF-AL-G-064	32	9.6	6.350	Aluminium Alloy - Clear Anodised	Set Screw	2	30.55	33.6	20.64	21.62
		<i>0.378</i>	<i>0.250</i>				<i>1.203</i>	<i>1.323</i>	<i>0.813</i>	<i>0.851</i>
# P-030G-032-090FF-AL-CL-080	32	9.6	8.000	Aluminium Alloy - Clear Anodised	Cap Screw Clamp	Double Flange	31	34	22	20
		<i>0.378</i>	<i>0.315</i>				<i>1.220</i>	<i>1.339</i>	<i>0.866</i>	<i>0.787</i>
# P-030G-032-090FF-AL-CL-100	32	9.6	10.000	Aluminium Alloy - Clear Anodised	Cap Screw Clamp	Double Flange	31	34	22	20
		<i>0.378</i>	<i>0.394</i>				<i>1.220</i>	<i>1.339</i>	<i>0.866</i>	<i>0.787</i>
# P-030G-034-090FF-AL-FL-060	34	9.6	6.000	Aluminium Alloy - Clear Anodised	Fairloc Hub - tm-	2	32.45	35.5	21.40	19.10
		<i>0.378</i>	<i>0.236</i>				<i>1.278</i>	<i>1.398</i>	<i>0.843</i>	<i>0.752</i>
# P-030G-034-090FF-AL-G-060	34	9.6	6.000	Aluminium Alloy - Clear Anodised	Set Screw	2	32.45	35.5	21.40	23.40
		<i>0.378</i>	<i>0.236</i>				<i>1.278</i>	<i>1.398</i>	<i>0.843</i>	<i>0.921</i>
# P-030G-034-090P-AL-FL-060	34	9.6	6.000	Aluminium Alloy - Clear Anodised	Fairloc Hub - tm-	No Flanges	32.45	-	21.40	19.10
		<i>0.378</i>	<i>0.236</i>				<i>1.278</i>		<i>0.843</i>	<i>0.752</i>
# P-030G-034-090P-AL-G-060	34	9.6	6.000	Aluminium Alloy - Clear Anodised	Set Screw	No Flanges	32.45	-	21.40	23.40
		<i>0.378</i>	<i>0.236</i>				<i>1.278</i>		<i>0.843</i>	<i>0.921</i>

# Indicates item not stocked at time of printing - Please enquire for lead time

Page 14 of 30

E&OE Pricing and all details subject to change without notice - Copyright Miniature Bearings Australia Pty Ltd  
MBA Size Listings are a guide to sizes only and must not be solely relied on for critical design information.

## Pulleys - Timing - 3.000mm Pitch - GT - 9mm Wide - Aluminium

Part Number	Teeth	Max Belt Width mm	Bore (d) mm	Material	Locking Type	Type (See Diagram)	Pitch Diameter (PD) mm	Flange Diameter (FD) mm	Overall Length (OL) mm	Hub Diameter (HD) mm
		<i>inches</i>	<i>inches</i>				<i>inches</i>	<i>inches</i>	<i>inches</i>	<i>inches</i>
# P-030G-034-090FF-AL-FL-064	34	9.6	6.350	Aluminium Alloy - Clear Anodised	Fairloc Hub - tm-	2	32.45	35.6	21.43	19.50
		<i>0.378</i>	<i>0.250</i>				<i>1.278</i>	<i>1.402</i>	<i>0.844</i>	<i>0.768</i>
# P-030G-034-090FF-AL-G-064	34	9.6	6.350	Aluminium Alloy - Clear Anodised	Set Screw	2	32.45	35.6	21.43	23.39
		<i>0.378</i>	<i>0.250</i>				<i>1.278</i>	<i>1.402</i>	<i>0.844</i>	<i>0.921</i>
# P-030G-034-090P-AL-FL-064	34	9.6	6.350	Aluminium Alloy - Clear Anodised	Fairloc Hub - tm-	No Flanges	32.45	-	21.43	19.50
		<i>0.378</i>	<i>0.250</i>				<i>1.278</i>		<i>0.844</i>	<i>0.768</i>
# P-030G-034-090P-AL-G-064	34	9.6	6.350	Aluminium Alloy - Clear Anodised	Set Screw	No Flanges	32.45	-	21.43	23.39
		<i>0.378</i>	<i>0.250</i>				<i>1.278</i>		<i>0.844</i>	<i>0.921</i>
# P-030G-036-090FF-AL-CL-050	36	9.6	5.000	Aluminium Alloy - Clear Anodised	Cap Screw Clamp	Double Flange	34	38	22	20
		<i>0.378</i>	<i>0.197</i>				<i>1.339</i>	<i>1.496</i>	<i>0.866</i>	<i>0.787</i>
# P-030G-036-090P-AL-G-060	36	9.6	6.000	Aluminium Alloy - Clear Anodised	Set Screw	No Flanges	34.36	-	21.40	25.40
		<i>0.378</i>	<i>0.236</i>				<i>1.353</i>		<i>0.843</i>	<i>1.000</i>
# P-030G-036-090P-AL-FL-060	36	9.6	6.000	Aluminium Alloy - Clear Anodised	Fairloc Hub - tm-	No Flanges	34.36	-	21.40	19.10
		<i>0.378</i>	<i>0.236</i>				<i>1.353</i>		<i>0.843</i>	<i>0.752</i>

# Indicates item not stocked at time of printing - Please enquire for lead time

Page 15 of 30

E&OE Pricing and all details subject to change without notice - Copyright Miniature Bearings Australia Pty Ltd  
MBA Size Listings are a guide to sizes only and must not be solely relied on for critical design information.

## Pulleys - Timing - 3.000mm Pitch - GT - 9mm Wide - Aluminium

Part Number	Teeth	Max Belt Width mm	Bore (d) mm	Material	Locking Type	Type (See Diagram)	Pitch Diameter (PD) mm	Flange Diameter (FD) mm	Overall Length (OL) mm	Hub Diameter (HD) mm
		<i>inches</i>	<i>inches</i>				<i>inches</i>	<i>inches</i>	<i>inches</i>	<i>inches</i>
# P-030G-036-090FF-AL-G-060	36	9.6	6.000	Aluminium Alloy - Clear Anodised	Set Screw	2	34.36	37.4	21.40	25.40
		<i>0.378</i>	<i>0.236</i>				<i>1.353</i>	<i>1.472</i>	<i>0.843</i>	<i>1.000</i>
# P-030G-036-090FF-AL-FL-060	36	9.6	6.000	Aluminium Alloy - Clear Anodised	Fairloc Hub - tm-	2	34.36	37.4	21.40	19.10
		<i>0.378</i>	<i>0.236</i>				<i>1.353</i>	<i>1.472</i>	<i>0.843</i>	<i>0.752</i>
# P-030G-036-090FF-AL-CL-060	36	9.6	6.000	Aluminium Alloy - Clear Anodised	Cap Screw Clamp	Double Flange	34	38	22	20
		<i>0.378</i>	<i>0.236</i>				<i>1.339</i>	<i>1.496</i>	<i>0.866</i>	<i>0.787</i>
# P-030G-036-090FF-AL-FL-064	36	9.6	6.350	Aluminium Alloy - Clear Anodised	Fairloc Hub - tm-	2	34.36	37.4	21.43	19.50
		<i>0.378</i>	<i>0.250</i>				<i>1.353</i>	<i>1.472</i>	<i>0.844</i>	<i>0.768</i>
# P-030G-036-090FF-AL-G-064	36	9.6	6.350	Aluminium Alloy - Clear Anodised	Set Screw	2	34.36	37.4	21.43	25.40
		<i>0.378</i>	<i>0.250</i>				<i>1.353</i>	<i>1.472</i>	<i>0.844</i>	<i>1.000</i>
# P-030G-036-090P-AL-FL-064	36	9.6	6.350	Aluminium Alloy - Clear Anodised	Fairloc Hub - tm-	No Flanges	34.36	-	21.43	19.50
		<i>0.378</i>	<i>0.250</i>				<i>1.353</i>		<i>0.844</i>	<i>0.768</i>
# P-030G-036-090P-AL-G-064	36	9.6	6.350	Aluminium Alloy - Clear Anodised	Set Screw	No Flanges	34.36	-	21.43	25.40
		<i>0.378</i>	<i>0.250</i>				<i>1.353</i>		<i>0.844</i>	<i>1.000</i>

# Indicates item not stocked at time of printing - Please enquire for lead time

Page 16 of 30

E&OE Pricing and all details subject to change without notice - Copyright Miniature Bearings Australia Pty Ltd  
MBA Size Listings are a guide to sizes only and must not be solely relied on for critical design information.



## Pulleys - Timing - 3.000mm Pitch - GT - 9mm Wide - Aluminium

Part Number	Teeth	Max Belt Width mm	Bore (d) mm	Material	Locking Type	Type (See Diagram)	Pitch Diameter (PD) mm	Flange Diameter (FD) mm	Overall Length (OL) mm	Hub Diameter (HD) mm
		<i>inches</i>	<i>inches</i>				<i>inches</i>	<i>inches</i>	<i>inches</i>	<i>inches</i>
# P-030G-036-090FF-AL-CL-080	36	9.6	8.000	Aluminium Alloy - Clear Anodised	Cap Screw Clamp	Double Flange	34	38	22	20
		<i>0.378</i>	<i>0.315</i>				<i>1.339</i>	<i>1.496</i>	<i>0.866</i>	<i>0.787</i>
# P-030G-036-090FF-AL-CL-100	36	9.6	10.000	Aluminium Alloy - Clear Anodised	Cap Screw Clamp	Double Flange	34	38	22	20
		<i>0.378</i>	<i>0.394</i>				<i>1.339</i>	<i>1.496</i>	<i>0.866</i>	<i>0.787</i>
# P-030G-038-090FF-AL-G-060	38	9.6	6.000	Aluminium Alloy - Clear Anodised	Set Screw	2	36.27	39.4	21.40	27.30
		<i>0.378</i>	<i>0.236</i>				<i>1.428</i>	<i>1.551</i>	<i>0.843</i>	<i>1.075</i>
# P-030G-038-090P-AL-FL-060	38	9.6	6.000	Aluminium Alloy - Clear Anodised	Fairloc Hub - tm-	No Flanges	36.27	-	21.40	19.10
		<i>0.378</i>	<i>0.236</i>				<i>1.428</i>		<i>0.843</i>	<i>0.752</i>
# P-030G-038-090P-AL-G-060	38	9.6	6.000	Aluminium Alloy - Clear Anodised	Set Screw	No Flanges	36.27	-	21.40	27.30
		<i>0.378</i>	<i>0.236</i>				<i>1.428</i>		<i>0.843</i>	<i>1.075</i>
# P-030G-038-090FF-AL-FL-060	38	9.6	6.000	Aluminium Alloy - Clear Anodised	Fairloc Hub - tm-	2	36.27	39.3	21.40	19.10
		<i>0.378</i>	<i>0.236</i>				<i>1.428</i>	<i>1.547</i>	<i>0.843</i>	<i>0.752</i>
# P-030G-038-090FF-AL-FL-064	38	9.6	6.350	Aluminium Alloy - Clear Anodised	Fairloc Hub - tm-	2	36.27	39.3	21.43	19.50
		<i>0.378</i>	<i>0.250</i>				<i>1.428</i>	<i>1.547</i>	<i>0.844</i>	<i>0.768</i>

# Indicates item not stocked at time of printing - Please enquire for lead time

Page 17 of 30

E&OE Pricing and all details subject to change without notice - Copyright Miniature Bearings Australia Pty Ltd  
MBA Size Listings are a guide to sizes only and must not be solely relied on for critical design information.

## Pulleys - Timing - 3.000mm Pitch - GT - 9mm Wide - Aluminium

Part Number	Teeth	Max Belt Width mm	Bore (d) mm	Material	Locking Type	Type (See Diagram)	Pitch Diameter (PD) mm	Flange Diameter (FD) mm	Overall Length (OL) mm	Hub Diameter (HD) mm
		<i>inches</i>	<i>inches</i>				<i>inches</i>	<i>inches</i>	<i>inches</i>	<i>inches</i>
# P-030G-038-090FF-AL-G-064	38	9.6	6.350	Aluminium Alloy - Clear Anodised	Set Screw	2	36.27	39.3	21.43	27.35
		<i>0.378</i>	<i>0.250</i>				<i>1.428</i>	<i>1.547</i>	<i>0.844</i>	<i>1.077</i>
# P-030G-038-090P-AL-FL-064	38	9.6	6.350	Aluminium Alloy - Clear Anodised	Fairloc Hub - tm-	No Flanges	36.27	-	21.43	19.50
		<i>0.378</i>	<i>0.250</i>				<i>1.428</i>		<i>0.844</i>	<i>0.768</i>
# P-030G-038-090P-AL-G-064	38	9.6	6.350	Aluminium Alloy - Clear Anodised	Set Screw	No Flanges	36.27	-	21.43	27.35
		<i>0.378</i>	<i>0.250</i>				<i>1.428</i>		<i>0.844</i>	<i>1.077</i>
# P-030G-040-090FF-AL-FL-060	40	9.6	6.000	Aluminium Alloy - Clear Anodised	Fairloc Hub - tm-	2	38.18	41.3	21.40	19.10
		<i>0.378</i>	<i>0.236</i>				<i>1.503</i>	<i>1.626</i>	<i>0.843</i>	<i>0.752</i>
# P-030G-040-090P-AL-G-060	40	9.6	6.000	Aluminium Alloy - Clear Anodised	Set Screw	No Flanges	38.18	-	21.40	29.20
		<i>0.378</i>	<i>0.236</i>				<i>1.503</i>		<i>0.843</i>	<i>1.150</i>
# P-030G-040-090P-AL-FL-060	40	9.6	6.000	Aluminium Alloy - Clear Anodised	Fairloc Hub - tm-	No Flanges	38.18	-	21.40	19.10
		<i>0.378</i>	<i>0.236</i>				<i>1.503</i>		<i>0.843</i>	<i>0.752</i>
# P-030G-040-090FF-AL-G-060	40	9.6	6.000	Aluminium Alloy - Clear Anodised	Set Screw	2	38.18	41.3	21.40	29.20
		<i>0.378</i>	<i>0.236</i>				<i>1.503</i>	<i>1.626</i>	<i>0.843</i>	<i>1.150</i>

# Indicates item not stocked at time of printing - Please enquire for lead time

Page 18 of 30

E&OE Pricing and all details subject to change without notice - Copyright Miniature Bearings Australia Pty Ltd  
MBA Size Listings are a guide to sizes only and must not be solely relied on for critical design information.

## Pulleys - Timing - 3.000mm Pitch - GT - 9mm Wide - Aluminium

Part Number	Teeth	Max Belt Width mm	Bore (d) mm	Material	Locking Type	Type (See Diagram)	Pitch Diameter (PD) mm	Flange Diameter (FD) mm	Overall Length (OL) mm	Hub Diameter (HD) mm
		<i>inches</i>	<i>inches</i>				<i>inches</i>	<i>inches</i>	<i>inches</i>	<i>inches</i>
# P-030G-040-090P-AL-FL-064	40	9.6	6.350	Aluminium Alloy - Clear Anodised	Fairloc Hub - tm-	No Flanges	38.18	-	21.43	19.50
		<i>0.378</i>	<i>0.250</i>				<i>1.503</i>		<i>0.844</i>	<i>0.768</i>
# P-030G-040-090FF-AL-G-064	40	9.6	6.350	Aluminium Alloy - Clear Anodised	Set Screw	2	38.18	41.3	21.43	29.21
		<i>0.378</i>	<i>0.250</i>				<i>1.503</i>	<i>1.626</i>	<i>0.844</i>	<i>1.150</i>
# P-030G-040-090FF-AL-FL-064	40	9.6	6.350	Aluminium Alloy - Clear Anodised	Fairloc Hub - tm-	2	38.18	41.3	21.43	19.50
		<i>0.378</i>	<i>0.250</i>				<i>1.503</i>	<i>1.626</i>	<i>0.844</i>	<i>0.768</i>
# P-030G-040-090P-AL-G-064	40	9.6	6.350	Aluminium Alloy - Clear Anodised	Set Screw	No Flanges	38.18	-	21.43	29.21
		<i>0.378</i>	<i>0.250</i>				<i>1.503</i>		<i>0.844</i>	<i>1.150</i>
# P-030G-040-090FF-AL-CL-080	40	9.6	8.000	Aluminium Alloy - Clear Anodised	Cap Screw Clamp	Double Flange	38	42	25	30
		<i>0.378</i>	<i>0.315</i>				<i>1.496</i>	<i>1.654</i>	<i>0.984</i>	<i>1.181</i>
# P-030G-040-090FF-AL-CL-100	40	9.6	10.000	Aluminium Alloy - Clear Anodised	Cap Screw Clamp	Double Flange	38	42	25	30
		<i>0.378</i>	<i>0.394</i>				<i>1.496</i>	<i>1.654</i>	<i>0.984</i>	<i>1.181</i>
# P-030G-040-090FF-AL-CL-110	40	9.6	11.000	Aluminium Alloy - Clear Anodised	Cap Screw Clamp	Double Flange	38	42	25	30
		<i>0.378</i>	<i>0.433</i>				<i>1.496</i>	<i>1.654</i>	<i>0.984</i>	<i>1.181</i>

# Indicates item not stocked at time of printing - Please enquire for lead time

Page 19 of 30

E&OE Pricing and all details subject to change without notice - Copyright Miniature Bearings Australia Pty Ltd  
MBA Size Listings are a guide to sizes only and must not be solely relied on for critical design information.

## Pulleys - Timing - 3.000mm Pitch - GT - 9mm Wide - Aluminium

Part Number	Teeth	Max Belt Width mm	Bore (d) mm	Material	Locking Type	Type (See Diagram)	Pitch Diameter (PD) mm	Flange Diameter (FD) mm	Overall Length (OL) mm	Hub Diameter (HD) mm
		<i>inches</i>	<i>inches</i>				<i>inches</i>	<i>inches</i>	<i>inches</i>	<i>inches</i>
# P-030G-040-090FF-AL-CL-120	40	9.6	12.000	Aluminium Alloy - Clear Anodised	Cap Screw Clamp	Double Flange	38	42	25	30
		<i>0.378</i>	<i>0.472</i>				<i>1.496</i>	<i>1.654</i>	<i>0.984</i>	<i>1.181</i>
# P-030G-040-090FF-AL-CL-140	40	9.6	14.000	Aluminium Alloy - Clear Anodised	Cap Screw Clamp	Double Flange	38	42	25	30
		<i>0.378</i>	<i>0.551</i>				<i>1.496</i>	<i>1.654</i>	<i>0.984</i>	<i>1.181</i>
P-030G-044-090FF-AL-G-060	44	9.6	6.000	Aluminium Alloy - Clear Anodised	Set Screw	2	42.00	45.1	21.40	33.00
		<i>0.378</i>	<i>0.236</i>				<i>1.654</i>	<i>1.776</i>	<i>0.843</i>	<i>1.299</i>
# P-030G-044-090P-AL-G-060	44	9.6	6.000	Aluminium Alloy - Clear Anodised	Set Screw	No Flanges	42.00	-	21.40	33.00
		<i>0.378</i>	<i>0.236</i>				<i>1.654</i>		<i>0.843</i>	<i>1.299</i>
# P-030G-044-090P-AL-G-064	44	9.6	6.350	Aluminium Alloy - Clear Anodised	Set Screw	No Flanges	42.00	-	21.43	33.20
		<i>0.378</i>	<i>0.250</i>				<i>1.654</i>		<i>0.844</i>	<i>1.307</i>
# P-030G-044-090FF-AL-G-064	44	9.6	6.350	Aluminium Alloy - Clear Anodised	Set Screw	2	42.00	45.9	21.43	33.20
		<i>0.378</i>	<i>0.250</i>				<i>1.654</i>	<i>1.807</i>	<i>0.844</i>	<i>1.307</i>
# P-030G-044-090FF-AL-CL-080	44	9.6	8.000	Aluminium Alloy - Clear Anodised	Cap Screw Clamp	Double Flange	42	46	25	30
		<i>0.378</i>	<i>0.315</i>				<i>1.654</i>	<i>1.811</i>	<i>0.984</i>	<i>1.181</i>

# Indicates item not stocked at time of printing - Please enquire for lead time

Page 20 of 30

E&OE Pricing and all details subject to change without notice - Copyright Miniature Bearings Australia Pty Ltd

MBA Size Listings are a guide to sizes only and must not be solely relied on for critical design information.

## Pulleys - Timing - 3.000mm Pitch - GT - 9mm Wide - Aluminium

Part Number	Teeth	Max Belt Width mm	Bore (d) mm	Material	Locking Type	Type (See Diagram)	Pitch Diameter (PD) mm	Flange Diameter (FD) mm	Overall Length (OL) mm	Hub Diameter (HD) mm
		<i>inches</i>	<i>inches</i>				<i>inches</i>	<i>inches</i>	<i>inches</i>	<i>inches</i>
# P-030G-044-090FF-AL-CL-100	44	9.6	10.000	Aluminium Alloy - Clear Anodised	Cap Screw Clamp	Double Flange	42	46	25	30
		<i>0.378</i>	<i>0.394</i>				<i>1.654</i>	<i>1.811</i>	<i>0.984</i>	<i>1.181</i>
# P-030G-044-090FF-AL-CL-110	44	9.6	11.000	Aluminium Alloy - Clear Anodised	Cap Screw Clamp	Double Flange	42	46	25	30
		<i>0.378</i>	<i>0.433</i>				<i>1.654</i>	<i>1.811</i>	<i>0.984</i>	<i>1.181</i>
# P-030G-044-090FF-AL-CL-120	44	9.6	12.000	Aluminium Alloy - Clear Anodised	Cap Screw Clamp	Double Flange	42	46	25	30
		<i>0.378</i>	<i>0.472</i>				<i>1.654</i>	<i>1.811</i>	<i>0.984</i>	<i>1.181</i>
# P-030G-044-090FF-AL-CL-140	44	9.6	14.000	Aluminium Alloy - Clear Anodised	Cap Screw Clamp	Double Flange	42	46	25	30
		<i>0.378</i>	<i>0.551</i>				<i>1.654</i>	<i>1.811</i>	<i>0.984</i>	<i>1.181</i>
# P-030G-045-090FF-AL-G-060	45	9.6	6.000	Aluminium Alloy - Clear Anodised	Set Screw	2	42.95	45.1	21.40	33.00
		<i>0.378</i>	<i>0.236</i>				<i>1.691</i>	<i>1.776</i>	<i>0.843</i>	<i>1.299</i>
# P-030G-045-090FF-AL-FL-060	45	9.6	6.000	Aluminium Alloy - Clear Anodised	Fairloc Hub - tm-	2	42.95	45.1	21.40	19.10
		<i>0.378</i>	<i>0.236</i>				<i>1.691</i>	<i>1.776</i>	<i>0.843</i>	<i>0.752</i>
# P-030G-045-090FF-AL-G-064	45	9.6	6.350	Aluminium Alloy - Clear Anodised	Set Screw	2	42.95	45.9	21.43	33.20
		<i>0.378</i>	<i>0.250</i>				<i>1.691</i>	<i>1.807</i>	<i>0.844</i>	<i>1.307</i>

# Indicates item not stocked at time of printing - Please enquire for lead time

Page 21 of 30

E&OE Pricing and all details subject to change without notice - Copyright Miniature Bearings Australia Pty Ltd  
MBA Size Listings are a guide to sizes only and must not be solely relied on for critical design information.

## Pulleys - Timing - 3.000mm Pitch - GT - 9mm Wide - Aluminium

Part Number	Teeth	Max Belt Width mm	Bore (d) mm	Material	Locking Type	Type (See Diagram)	Pitch Diameter (PD) mm	Flange Diameter (FD) mm	Overall Length (OL) mm	Hub Diameter (HD) mm
		<i>inches</i>	<i>inches</i>				<i>inches</i>	<i>inches</i>	<i>inches</i>	<i>inches</i>
# P-030G-045-090FF-AL-FL-064	45	9.6	6.350	Aluminium Alloy - Clear Anodised	Fairloc Hub - tm-	2	42.95	45.9	21.43	19.50
		<i>0.378</i>	<i>0.250</i>				<i>1.691</i>	<i>1.807</i>	<i>0.844</i>	<i>0.768</i>
# P-030G-045-090P-AL-G-079	45	9.6	7.938	Aluminium Alloy - Clear Anodised	Set Screw	No Flanges	42.95	-	22.23	31.75
		<i>0.378</i>	<i>0.313</i>				<i>1.691</i>		<i>0.875</i>	<i>1.250</i>
# P-030G-045-090P-AL-FL-079	45	9.6	7.938	Aluminium Alloy - Clear Anodised	Fairloc Hub - tm-	No Flanges	42.95	-	22.23	25.40
		<i>0.378</i>	<i>0.313</i>				<i>1.691</i>		<i>0.875</i>	<i>1.000</i>
# P-030G-045-090P-AL-FL-080	45	9.6	8.000	Aluminium Alloy - Clear Anodised	Fairloc Hub - tm-	No Flanges	42.95	-	22.20	25.40
		<i>0.378</i>	<i>0.315</i>				<i>1.691</i>		<i>0.874</i>	<i>1.000</i>
# P-030G-045-090P-AL-G-080	45	9.6	8.000	Aluminium Alloy - Clear Anodised	Set Screw	No Flanges	42.95	-	22.20	31.80
		<i>0.378</i>	<i>0.315</i>				<i>1.691</i>		<i>0.874</i>	<i>1.252</i>
# P-030G-048-090P-AL-FL-079	48	9.6	7.938	Aluminium Alloy - Clear Anodised	Fairloc Hub - tm-	No Flanges	45.82	-	22.23	25.40
		<i>0.378</i>	<i>0.313</i>				<i>1.804</i>		<i>0.875</i>	<i>1.000</i>
# P-030G-048-090P-AL-G-079	48	9.6	7.938	Aluminium Alloy - Clear Anodised	Set Screw	No Flanges	45.82	-	22.23	31.75
		<i>0.378</i>	<i>0.313</i>				<i>1.804</i>		<i>0.875</i>	<i>1.250</i>

# Indicates item not stocked at time of printing - Please enquire for lead time

Page 22 of 30

E&OE Pricing and all details subject to change without notice - Copyright Miniature Bearings Australia Pty Ltd  
MBA Size Listings are a guide to sizes only and must not be solely relied on for critical design information.

## Pulleys - Timing - 3.000mm Pitch - GT - 9mm Wide - Aluminium

Part Number	Teeth	Max Belt Width mm	Bore (d) mm	Material	Locking Type	Type (See Diagram)	Pitch Diameter (PD) mm	Flange Diameter (FD) mm	Overall Length (OL) mm	Hub Diameter (HD) mm
		<i>inches</i>	<i>inches</i>				<i>inches</i>	<i>inches</i>	<i>inches</i>	<i>inches</i>
# P-030G-048-090P-AL-FL-080	48	9.6	8.000	Aluminium Alloy - Clear Anodised	Fairloc Hub - tm-	No Flanges	45.82	-	22.20	25.40
		<i>0.378</i>	<i>0.315</i>				<i>1.804</i>		<i>0.874</i>	<i>1.000</i>
# P-030G-048-090P-AL-G-080	48	9.6	8.000	Aluminium Alloy - Clear Anodised	Set Screw	No Flanges	45.82	-	22.20	31.80
		<i>0.378</i>	<i>0.315</i>				<i>1.804</i>		<i>0.874</i>	<i>1.252</i>
# P-030G-048-090FF-AL-CL-080	48	9.6	8.000	Aluminium Alloy - Clear Anodised	Cap Screw Clamp	Double Flange	46	49	28	38
		<i>0.378</i>	<i>0.315</i>				<i>1.811</i>	<i>1.929</i>	<i>1.102</i>	<i>1.496</i>
# P-030G-048-090FF-AL-CL-100	48	9.6	10.000	Aluminium Alloy - Clear Anodised	Cap Screw Clamp	Double Flange	46	49	28	38
		<i>0.378</i>	<i>0.394</i>				<i>1.811</i>	<i>1.929</i>	<i>1.102</i>	<i>1.496</i>
# P-030G-048-090FF-AL-CL-110	48	9.6	11.000	Aluminium Alloy - Clear Anodised	Cap Screw Clamp	Double Flange	46	49	28	38
		<i>0.378</i>	<i>0.433</i>				<i>1.811</i>	<i>1.929</i>	<i>1.102</i>	<i>1.496</i>
# P-030G-048-090FF-AL-CL-120	48	9.6	12.000	Aluminium Alloy - Clear Anodised	Cap Screw Clamp	Double Flange	46	49	28	38
		<i>0.378</i>	<i>0.472</i>				<i>1.811</i>	<i>1.929</i>	<i>1.102</i>	<i>1.496</i>
# P-030G-048-090FF-AL-CL-140	48	9.6	14.000	Aluminium Alloy - Clear Anodised	Cap Screw Clamp	Double Flange	46	49	28	38
		<i>0.378</i>	<i>0.551</i>				<i>1.811</i>	<i>1.929</i>	<i>1.102</i>	<i>1.496</i>

# Indicates item not stocked at time of printing - Please enquire for lead time

Page 23 of 30

E&OE Pricing and all details subject to change without notice - Copyright Miniature Bearings Australia Pty Ltd  
MBA Size Listings are a guide to sizes only and must not be solely relied on for critical design information.

## Pulleys - Timing - 3.000mm Pitch - GT - 9mm Wide - Aluminium

Part Number	Teeth	Max Belt Width mm	Bore (d) mm	Material	Locking Type	Type (See Diagram)	Pitch Diameter (PD) mm	Flange Diameter (FD) mm	Overall Length (OL) mm	Hub Diameter (HD) mm
		<i>inches</i>	<i>inches</i>				<i>inches</i>	<i>inches</i>	<i>inches</i>	<i>inches</i>
# P-030G-048-090FF-AL-CL-150	48	9.6	15.000	Aluminium Alloy - Clear Anodised	Cap Screw Clamp	Double Flange	46	49	28	38
		<i>0.378</i>	<i>0.591</i>				<i>1.811</i>	<i>1.929</i>	<i>1.102</i>	<i>1.496</i>
# P-030G-048-090FF-AL-CL-160	48	9.6	16.000	Aluminium Alloy - Clear Anodised	Cap Screw Clamp	Double Flange	46	49	28	38
		<i>0.378</i>	<i>0.630</i>				<i>1.811</i>	<i>1.929</i>	<i>1.102</i>	<i>1.496</i>
# P-030G-048-090FF-AL-CL-180	48	9.6	18.000	Aluminium Alloy - Clear Anodised	Cap Screw Clamp	Double Flange	46	49	28	38
		<i>0.378</i>	<i>0.709</i>				<i>1.811</i>	<i>1.929</i>	<i>1.102</i>	<i>1.496</i>
# P-030G-050-090P-AL-FL-079	50	9.6	7.938	Aluminium Alloy - Clear Anodised	Fairloc Hub - tm-	No Flanges	47.73	-	22.23	25.40
		<i>0.378</i>	<i>0.313</i>				<i>1.879</i>		<i>0.875</i>	<i>1.000</i>
# P-030G-050-090P-AL-G-079	50	9.6	7.938	Aluminium Alloy - Clear Anodised	Set Screw	No Flanges	47.73	-	22.23	31.75
		<i>0.378</i>	<i>0.313</i>				<i>1.879</i>		<i>0.875</i>	<i>1.250</i>
# P-030G-050-090P-AL-G-080	50	9.6	8.000	Aluminium Alloy - Clear Anodised	Set Screw	No Flanges	47.73	-	22.20	31.80
		<i>0.378</i>	<i>0.315</i>				<i>1.879</i>		<i>0.874</i>	<i>1.252</i>
# P-030G-050-090P-AL-FL-080	50	9.6	8.000	Aluminium Alloy - Clear Anodised	Fairloc Hub - tm-	No Flanges	47.73	-	22.20	25.40
		<i>0.378</i>	<i>0.315</i>				<i>1.879</i>		<i>0.874</i>	<i>1.000</i>

# Indicates item not stocked at time of printing - Please enquire for lead time

Page 24 of 30

E&OE Pricing and all details subject to change without notice - Copyright Miniature Bearings Australia Pty Ltd  
MBA Size Listings are a guide to sizes only and must not be solely relied on for critical design information.



## Pulleys - Timing - 3.000mm Pitch - GT - 9mm Wide - Aluminium

Part Number	Teeth	Max Belt Width mm	Bore (d) mm	Material	Locking Type	Type (See Diagram)	Pitch Diameter (PD) mm	Flange Diameter (FD) mm	Overall Length (OL) mm	Hub Diameter (HD) mm
		<i>inches</i>	<i>inches</i>				<i>inches</i>	<i>inches</i>	<i>inches</i>	<i>inches</i>
# P-030G-050-090FF-AL-CL-080	50	9.6	8.000	Aluminium Alloy - Clear Anodised	Cap Screw Clamp	Double Flange	48	51	28	38
		<i>0.378</i>	<i>0.315</i>				<i>1.890</i>	<i>2.008</i>	<i>1.102</i>	<i>1.496</i>
# P-030G-050-090FF-AL-CL-100	50	9.6	10.000	Aluminium Alloy - Clear Anodised	Cap Screw Clamp	Double Flange	48	51	28	38
		<i>0.378</i>	<i>0.394</i>				<i>1.890</i>	<i>2.008</i>	<i>1.102</i>	<i>1.496</i>
# P-030G-050-090FF-AL-CL-110	50	9.6	11.000	Aluminium Alloy - Clear Anodised	Cap Screw Clamp	Double Flange	48	51	28	38
		<i>0.378</i>	<i>0.433</i>				<i>1.890</i>	<i>2.008</i>	<i>1.102</i>	<i>1.496</i>
# P-030G-050-090FF-AL-CL-120	50	9.6	12.000	Aluminium Alloy - Clear Anodised	Cap Screw Clamp	Double Flange	48	51	28	38
		<i>0.378</i>	<i>0.472</i>				<i>1.890</i>	<i>2.008</i>	<i>1.102</i>	<i>1.496</i>
# P-030G-050-090FF-AL-CL-140	50	9.6	14.000	Aluminium Alloy - Clear Anodised	Cap Screw Clamp	Double Flange	48	51	28	38
		<i>0.378</i>	<i>0.551</i>				<i>1.890</i>	<i>2.008</i>	<i>1.102</i>	<i>1.496</i>
# P-030G-050-090FF-AL-CL-150	50	9.6	15.000	Aluminium Alloy - Clear Anodised	Cap Screw Clamp	Double Flange	48	51	28	38
		<i>0.378</i>	<i>0.591</i>				<i>1.890</i>	<i>2.008</i>	<i>1.102</i>	<i>1.496</i>
# P-030G-050-090FF-AL-CL-160	50	9.6	16.000	Aluminium Alloy - Clear Anodised	Cap Screw Clamp	Double Flange	48	51	28	38
		<i>0.378</i>	<i>0.630</i>				<i>1.890</i>	<i>2.008</i>	<i>1.102</i>	<i>1.496</i>

# Indicates item not stocked at time of printing - Please enquire for lead time

Page 25 of 30

E&OE Pricing and all details subject to change without notice - Copyright Miniature Bearings Australia Pty Ltd  
MBA Size Listings are a guide to sizes only and must not be solely relied on for critical design information.

## Pulleys - Timing - 3.000mm Pitch - GT - 9mm Wide - Aluminium

Part Number	Teeth	Max Belt Width mm	Bore (d) mm	Material	Locking Type	Type (See Diagram)	Pitch Diameter (PD) mm	Flange Diameter (FD) mm	Overall Length (OL) mm	Hub Diameter (HD) mm
		<i>inches</i>	<i>inches</i>				<i>inches</i>	<i>inches</i>	<i>inches</i>	<i>inches</i>
# P-030G-050-090FF-AL-CL-180	50	9.6	18.000	Aluminium Alloy - Clear Anodised	Cap Screw Clamp	Double Flange	48	51	28	38
		<i>0.378</i>	<i>0.709</i>				<i>1.890</i>	<i>2.008</i>	<i>1.102</i>	<i>1.496</i>
# P-030G-056-090P-AL-FL-079	56	9.6	7.938	Aluminium Alloy - Clear Anodised	Fairloc Hub - tm-	No Flanges	53.45	-	22.23	25.40
		<i>0.378</i>	<i>0.313</i>				<i>2.104</i>		<i>0.875</i>	<i>1.000</i>
# P-030G-056-090P-AL-G-079	56	9.6	7.938	Aluminium Alloy - Clear Anodised	Set Screw	No Flanges	53.45	-	22.23	31.75
		<i>0.378</i>	<i>0.313</i>				<i>2.104</i>		<i>0.875</i>	<i>1.250</i>
# P-030G-056-090P-AL-FL-080	56	9.6	8.000	Aluminium Alloy - Clear Anodised	Fairloc Hub - tm-	No Flanges	53.45	-	22.20	25.40
		<i>0.378</i>	<i>0.315</i>				<i>2.104</i>		<i>0.874</i>	<i>1.000</i>
# P-030G-056-090P-AL-G-080	56	9.6	8.000	Aluminium Alloy - Clear Anodised	Set Screw	No Flanges	53.45	-	22.20	31.80
		<i>0.378</i>	<i>0.315</i>				<i>2.104</i>		<i>0.874</i>	<i>1.252</i>
# P-030G-060-090P-AL-FL-079	60	9.6	7.938	Aluminium Alloy - Clear Anodised	Fairloc Hub - tm-	No Flanges	57.27	-	22.23	25.40
		<i>0.378</i>	<i>0.313</i>				<i>2.255</i>		<i>0.875</i>	<i>1.000</i>
# P-030G-060-090P-AL-G-079	60	9.6	7.938	Aluminium Alloy - Clear Anodised	Set Screw	No Flanges	57.27	-	22.23	31.75
		<i>0.378</i>	<i>0.313</i>				<i>2.255</i>		<i>0.875</i>	<i>1.250</i>

# Indicates item not stocked at time of printing - Please enquire for lead time

Page 26 of 30

E&OE Pricing and all details subject to change without notice - Copyright Miniature Bearings Australia Pty Ltd  
MBA Size Listings are a guide to sizes only and must not be solely relied on for critical design information.

## Pulleys - Timing - 3.000mm Pitch - GT - 9mm Wide - Aluminium

Part Number	Teeth	Max Belt Width mm	Bore (d) mm	Material	Locking Type	Type (See Diagram)	Pitch Diameter (PD) mm	Flange Diameter (FD) mm	Overall Length (OL) mm	Hub Diameter (HD) mm
		<i>inches</i>	<i>inches</i>				<i>inches</i>	<i>inches</i>	<i>inches</i>	<i>inches</i>
# P-030G-060-090P-AL-G-080	60	9.6	8.000	Aluminium Alloy - Clear Anodised	Set Screw	No Flanges	57.27	-	22.20	31.80
		<i>0.378</i>	<i>0.315</i>				<i>2.255</i>		<i>0.874</i>	<i>1.252</i>
# P-030G-060-090P-AL-FL-080	60	9.6	8.000	Aluminium Alloy - Clear Anodised	Fairloc Hub - tm-	No Flanges	57.27	-	22.20	25.40
		<i>0.378</i>	<i>0.315</i>				<i>2.255</i>		<i>0.874</i>	<i>1.000</i>
# P-030G-060-090FF-AL-CL-120	60	9.6	12.000	Aluminium Alloy - Clear Anodised	Cap Screw Clamp	Double Flange	57	61	30	40
		<i>0.378</i>	<i>0.472</i>				<i>2.244</i>	<i>2.402</i>	<i>1.181</i>	<i>1.575</i>
# P-030G-060-090FF-AL-CL-140	60	9.6	14.000	Aluminium Alloy - Clear Anodised	Cap Screw Clamp	Double Flange	57	61	30	40
		<i>0.378</i>	<i>0.551</i>				<i>2.244</i>	<i>2.402</i>	<i>1.181</i>	<i>1.575</i>
# P-030G-060-090FF-AL-CL-150	60	9.6	15.000	Aluminium Alloy - Clear Anodised	Cap Screw Clamp	Double Flange	57	61	30	40
		<i>0.378</i>	<i>0.591</i>				<i>2.244</i>	<i>2.402</i>	<i>1.181</i>	<i>1.575</i>
# P-030G-060-090FF-AL-CL-160	60	9.6	16.000	Aluminium Alloy - Clear Anodised	Cap Screw Clamp	Double Flange	57	61	30	40
		<i>0.378</i>	<i>0.630</i>				<i>2.244</i>	<i>2.402</i>	<i>1.181</i>	<i>1.575</i>
# P-030G-060-090FF-AL-CL-180	60	9.6	18.000	Aluminium Alloy - Clear Anodised	Cap Screw Clamp	Double Flange	57	61	30	40
		<i>0.378</i>	<i>0.709</i>				<i>2.244</i>	<i>2.402</i>	<i>1.181</i>	<i>1.575</i>

# Indicates item not stocked at time of printing - Please enquire for lead time

Page 27 of 30

E&OE Pricing and all details subject to change without notice - Copyright Miniature Bearings Australia Pty Ltd  
MBA Size Listings are a guide to sizes only and must not be solely relied on for critical design information.

## Pulleys - Timing - 3.000mm Pitch - GT - 9mm Wide - Aluminium

Part Number	Teeth	Max Belt Width mm	Bore (d) mm	Material	Locking Type	Type (See Diagram)	Pitch Diameter (PD) mm	Flange Diameter (FD) mm	Overall Length (OL) mm	Hub Diameter (HD) mm
		<i>inches</i>	<i>inches</i>				<i>inches</i>	<i>inches</i>	<i>inches</i>	<i>inches</i>
# P-030G-060-090FF-AL-CL-190	60	9.6	19.000	Aluminium Alloy - Clear Anodised	Cap Screw Clamp	Double Flange	57	61	30	40
		<i>0.378</i>	<i>0.748</i>				<i>2.244</i>	<i>2.402</i>	<i>1.181</i>	<i>1.575</i>
# P-030G-060-090FF-AL-CL-200	60	9.6	20.000	Aluminium Alloy - Clear Anodised	Cap Screw Clamp	Double Flange	57	61	30	40
		<i>0.378</i>	<i>0.787</i>				<i>2.244</i>	<i>2.402</i>	<i>1.181</i>	<i>1.575</i>
# P-030G-060-090FF-AL-CL-220	60	9.6	22.000	Aluminium Alloy - Clear Anodised	Cap Screw Clamp	Double Flange	57	61	30	40
		<i>0.378</i>	<i>0.866</i>				<i>2.244</i>	<i>2.402</i>	<i>1.181</i>	<i>1.575</i>
# P-030G-060-090FF-AL-CL-240	60	9.6	24.000	Aluminium Alloy - Clear Anodised	Cap Screw Clamp	Double Flange	57	61	30	40
		<i>0.378</i>	<i>0.945</i>				<i>2.244</i>	<i>2.402</i>	<i>1.181</i>	<i>1.575</i>
# P-030G-060-090FF-AL-CL-250	60	9.6	25.000	Aluminium Alloy - Clear Anodised	Cap Screw Clamp	Double Flange	57	61	30	40
		<i>0.378</i>	<i>0.984</i>				<i>2.244</i>	<i>2.402</i>	<i>1.181</i>	<i>1.575</i>
# P-030G-062-090P-AL-G-079	62	9.6	7.938	Aluminium Alloy - Clear Anodised	Set Screw	No Flanges	59.18	-	22.23	31.75
		<i>0.378</i>	<i>0.313</i>				<i>2.330</i>		<i>0.875</i>	<i>1.250</i>
# P-030G-062-090P-AL-G-080	62	9.6	8.000	Aluminium Alloy - Clear Anodised	Set Screw	No Flanges	59.18	-	22.20	31.80
		<i>0.378</i>	<i>0.315</i>				<i>2.330</i>		<i>0.874</i>	<i>1.252</i>

# Indicates item not stocked at time of printing - Please enquire for lead time

Page 28 of 30

E&OE Pricing and all details subject to change without notice - Copyright Miniature Bearings Australia Pty Ltd

MBA Size Listings are a guide to sizes only and must not be solely relied on for critical design information.

## Pulleys - Timing - 3.000mm Pitch - GT - 9mm Wide - Aluminium

Part Number	Teeth	Max Belt Width mm	Bore (d) mm	Material	Locking Type	Type (See Diagram)	Pitch Diameter (PD) mm	Flange Diameter (FD) mm	Overall Length (OL) mm	Hub Diameter (HD) mm
		<i>inches</i>	<i>inches</i>				<i>inches</i>	<i>inches</i>	<i>inches</i>	<i>inches</i>
# P-030G-068-090P-AL-G-079	68	9.6	7.938	Aluminium Alloy - Clear Anodised	Set Screw	No Flanges	64.91	-	22.23	31.75
		<i>0.378</i>	<i>0.313</i>				<i>2.556</i>		<i>0.875</i>	<i>1.250</i>
# P-030G-068-090P-AL-G-080	68	9.6	8.000	Aluminium Alloy - Clear Anodised	Set Screw	No Flanges	64.91	-	22.20	31.80
		<i>0.378</i>	<i>0.315</i>				<i>2.556</i>		<i>0.874</i>	<i>1.252</i>
# P-030G-072-090P-AL-G-079	72	9.6	7.938	Aluminium Alloy - Clear Anodised	Set Screw	No Flanges	68.73	-	22.23	31.75
		<i>0.378</i>	<i>0.313</i>				<i>2.706</i>		<i>0.875</i>	<i>1.250</i>
# P-030G-072-090P-AL-FL-079	72	9.6	7.938	Aluminium Alloy - Clear Anodised	Fairloc Hub - tm-	No Flanges	68.73	-	22.23	25.40
		<i>0.378</i>	<i>0.313</i>				<i>2.706</i>		<i>0.875</i>	<i>1.000</i>
# P-030G-072-090P-AL-G-080	72	9.6	8.000	Aluminium Alloy - Clear Anodised	Set Screw	No Flanges	68.73	-	22.20	31.80
		<i>0.378</i>	<i>0.315</i>				<i>2.706</i>		<i>0.874</i>	<i>1.252</i>
# P-030G-072-090P-AL-FL-080	72	9.6	8.000	Aluminium Alloy - Clear Anodised	Fairloc Hub - tm-	No Flanges	68.73	-	22.20	25.40
		<i>0.378</i>	<i>0.315</i>				<i>2.706</i>		<i>0.874</i>	<i>1.000</i>
# P-030G-074-090P-AL-G-079	74	9.6	7.938	Aluminium Alloy - Clear Anodised	Set Screw	No Flanges	70.63	-	22.20	31.75
		<i>0.378</i>	<i>0.313</i>				<i>2.781</i>		<i>0.874</i>	<i>1.250</i>

# Indicates item not stocked at time of printing - Please enquire for lead time

Page 29 of 30

E&OE Pricing and all details subject to change without notice - Copyright Miniature Bearings Australia Pty Ltd  
MBA Size Listings are a guide to sizes only and must not be solely relied on for critical design information.

## Pulleys - Timing - 3.000mm Pitch - GT - 9mm Wide - Aluminium

Part Number	Teeth	Max Belt Width mm	Bore (d) mm	Material	Locking Type	Type (See Diagram)	Pitch Diameter (PD) mm	Flange Diameter (FD) mm	Overall Length (OL) mm	Hub Diameter (HD) mm
		<i>inches</i>	<i>inches</i>				<i>inches</i>	<i>inches</i>	<i>inches</i>	<i>inches</i>
# P-030G-080-090P-AL-FL-079	80	9.6	7.938	Aluminium Alloy - Clear Anodised	Fairloc Hub - tm-	No Flanges	76.36	-	22.23	25.40
		<i>0.378</i>	<i>0.313</i>				<i>3.006</i>		<i>0.875</i>	<i>1.000</i>
# P-030G-080-090P-AL-G-079	80	9.6	7.938	Aluminium Alloy - Clear Anodised	Set Screw	No Flanges	76.36	-	22.23	31.75
		<i>0.378</i>	<i>0.313</i>				<i>3.006</i>		<i>0.875</i>	<i>1.250</i>
# P-030G-080-090P-AL-FL-080	80	9.6	8.000	Aluminium Alloy - Clear Anodised	Fairloc Hub - tm-	No Flanges	76.36	-	22.20	25.40
		<i>0.378</i>	<i>0.315</i>				<i>3.006</i>		<i>0.874</i>	<i>1.000</i>
# P-030G-080-090P-AL-G-080	80	9.6	8.000	Aluminium Alloy - Clear Anodised	Set Screw	No Flanges	76.36	-	22.20	31.80
		<i>0.378</i>	<i>0.315</i>				<i>3.006</i>		<i>0.874</i>	<i>1.252</i>
# P-030G-090-090P-AL-G-079	90	9.6	7.938	Aluminium Alloy - Clear Anodised	Set Screw	No Flanges	85.91	-	22.20	31.75
		<i>0.378</i>	<i>0.313</i>				<i>3.382</i>		<i>0.874</i>	<i>1.250</i>
# P-030G-100-090P-AL-G-079	100	9.6	7.938	Aluminium Alloy - Clear Anodised	Set Screw	No Flanges	95.45	-	22.20	31.75
		<i>0.378</i>	<i>0.313</i>				<i>3.758</i>		<i>0.874</i>	<i>1.250</i>
# P-030G-120-090P-AL-G-079	120	9.6	7.938	Aluminium Alloy - Clear Anodised	Set Screw	No Flanges	114.65	-	22.20	31.75
		<i>0.378</i>	<i>0.313</i>				<i>4.514</i>		<i>0.874</i>	<i>1.250</i>

# Indicates item not stocked at time of printing - Please enquire for lead time

Page 30 of 30

E&OE Pricing and all details subject to change without notice - Copyright Miniature Bearings Australia Pty Ltd  
MBA Size Listings are a guide to sizes only and must not be solely relied on for critical design information.

DISTRIBUTED BY

Distributed By:

