



Pulleys - Timing - 5.000mm Pitch - GT - 9mm Wide - Aluminium

10/4/2018

Indicates item not stocked at time of printing - Please enquire for lead time

E&OE Pricing and all details subject to change without notice - Copyright Miniature Bearings Australia Pty Ltd

MBA Size Listings are a guide to sizes only and must not be solely relied on for critical design information.

Page 1 of 16

INFORMATION

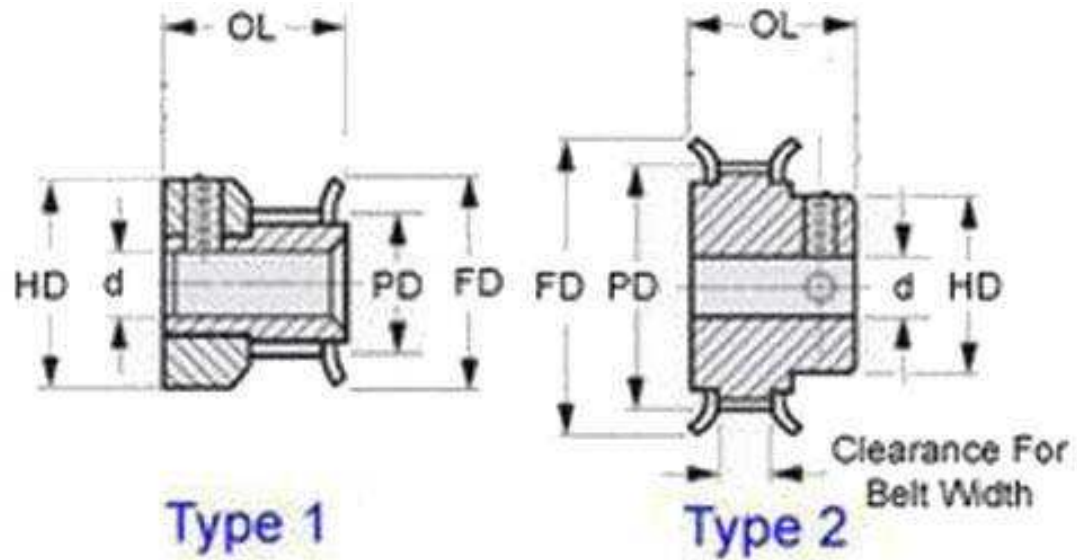
Timing Pulleys to suit GT 5.000mm Pitch Timing Belts. Suits belts 9.0 to 9.6mm wide.

This catalogue to be read in conjunction with information at
<http://www.minibearings.com.au//partslist/beltstiming5000mmpitchgt9mmwide/beltstiming5000mmpitchgt9mmwide/A/1/>
<http://www.minibearings.com.au//partslist/beltstiming5000mmpitchgtdoublesided9mm/beltstiming5000mmpitchgtdoublesided9mm/A/1/>
<http://www.minibearings.com.au/www.smallparts.com.au/store/categories/easy+kits/>

Indicates item not stocked at time of printing - Please enquire for lead time

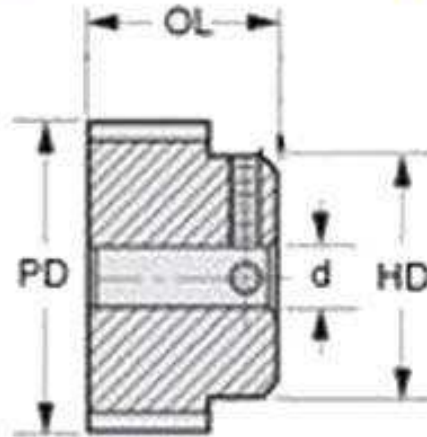
E&OE Pricing and all details subject to change without notice - Copyright Miniature Bearings Australia Pty Ltd

MBA Size Listings are a guide to sizes only and must not be solely relied on for critical design information.



Type 1

Type 2



Type 3

Indicates item not stocked at time of printing - Please enquire for lead time

E&OE Pricing and all details subject to change without notice - Copyright Miniature Bearings Australia Pty Ltd

MBA Size Listings are a guide to sizes only and must not be solely relied on for critical design information.

Pulleys - Timing - 5.000mm Pitch - GT - 9mm Wide - Aluminium

Part Number	Teeth	Max Belt Width mm	Bore (d) mm	Material	Locking Type	Type (See Diagram)	Pitch Diameter (PD) mm	Flange Diameter (FD) mm	Overall Length (OL) mm	Hub Diameter (HD) mm
		<i>inches</i>	<i>inches</i>				<i>inches</i>	<i>inches</i>	<i>inches</i>	<i>inches</i>
# P-050G-012-090P-AL-G-060	12	9.6	6.000	Aluminium Alloy - Clear Anodised	Set Screw	3	19.09	-	20.20	11.10
		<i>0.378</i>	<i>0.236</i>				<i>0.752</i>		<i>0.795</i>	<i>0.437</i>
# P-050G-012-090FF-AL-G-060	12	9.6	6.000	Aluminium Alloy - Clear Anodised	Set Screw	2	19.09	22.2	20.20	11.10
		<i>0.378</i>	<i>0.236</i>				<i>0.752</i>	<i>0.874</i>	<i>0.795</i>	<i>0.437</i>
# P-050G-012-090FF-AL-G-064	12	9.6	6.350	Aluminium Alloy - Clear Anodised	Set Screw	2	19.09	22.2	20.24	11.13
		<i>0.378</i>	<i>0.250</i>				<i>0.752</i>	<i>0.874</i>	<i>0.797</i>	<i>0.438</i>
# P-050G-012-090P-AL-G-064	12	9.6	6.350	Aluminium Alloy - Clear Anodised	Set Screw	3	19.09	-	20.24	11.11
		<i>0.378</i>	<i>0.250</i>				<i>0.752</i>		<i>0.797</i>	<i>0.437</i>
# P-050G-013-090FF-AL-G-060	13	9.6	6.000	Aluminium Alloy - Clear Anodised	Set Screw	2	20.68	23.8	20.20	15.90
		<i>0.378</i>	<i>0.236</i>				<i>0.814</i>	<i>0.937</i>	<i>0.795</i>	<i>0.626</i>
# P-050G-013-090P-AL-G-060	13	9.6	6.000	Aluminium Alloy - Clear Anodised	Set Screw	3	20.68	-	20.20	15.90
		<i>0.378</i>	<i>0.236</i>				<i>0.814</i>		<i>0.795</i>	<i>0.626</i>
# P-050G-013-090FF-AL-G-064	13	9.6	6.350	Aluminium Alloy - Clear Anodised	Set Screw	2	20.68	23.8	20.24	15.88
		<i>0.378</i>	<i>0.250</i>				<i>0.814</i>	<i>0.937</i>	<i>0.797</i>	<i>0.625</i>

Indicates item not stocked at time of printing - Please enquire for lead time

Page 4 of 16

E&OE Pricing and all details subject to change without notice - Copyright Miniature Bearings Australia Pty Ltd
MBA Size Listings are a guide to sizes only and must not be solely relied on for critical design information.

Pulleys - Timing - 5.000mm Pitch - GT - 9mm Wide - Aluminium

Part Number	Teeth	Max Belt Width mm	Bore (d) mm	Material	Locking Type	Type (See Diagram)	Pitch Diameter (PD) mm	Flange Diameter (FD) mm	Overall Length (OL) mm	Hub Diameter (HD) mm
		<i>inches</i>	<i>inches</i>				<i>inches</i>	<i>inches</i>	<i>inches</i>	<i>inches</i>
# P-050G-013-090P-AL-G-064	13	9.6	6.350	Aluminium Alloy - Clear Anodised	Set Screw	3	20.68	-	20.24	15.88
		<i>0.378</i>	<i>0.250</i>				<i>0.814</i>		<i>0.797</i>	<i>0.625</i>
# P-050G-014-090P-AL-G-060	14	9.6	6.000	Aluminium Alloy - Clear Anodised	Set Screw	3	22.27	-	20.20	15.90
		<i>0.378</i>	<i>0.236</i>				<i>0.877</i>		<i>0.795</i>	<i>0.626</i>
# P-050G-014-090FF-AL-G-060	14	9.6	6.000	Aluminium Alloy - Clear Anodised	Set Screw	2	22.27	25.4	20.20	15.90
		<i>0.378</i>	<i>0.236</i>				<i>0.877</i>	<i>1.000</i>	<i>0.795</i>	<i>0.626</i>
# P-050G-014-090P-AL-G-064	14	9.6	6.350	Aluminium Alloy - Clear Anodised	Set Screw	3	22.27	-	20.24	15.88
		<i>0.378</i>	<i>0.250</i>				<i>0.877</i>		<i>0.797</i>	<i>0.625</i>
# P-050G-014-090FF-AL-G-064	14	9.6	6.350	Aluminium Alloy - Clear Anodised	Set Screw	2	22.27	25.4	20.24	15.88
		<i>0.378</i>	<i>0.250</i>				<i>0.877</i>	<i>1.000</i>	<i>0.797</i>	<i>0.625</i>
# P-050G-015-090P-AL-G-060	15	9.6	6.000	Aluminium Alloy - Clear Anodised	Set Screw	3	23.86	-	20.20	15.90
		<i>0.378</i>	<i>0.236</i>				<i>0.939</i>		<i>0.795</i>	<i>0.626</i>
# P-050G-015-090FF-AL-G-060	15	9.6	6.000	Aluminium Alloy - Clear Anodised	Set Screw	2	23.86	27.0	20.20	15.90
		<i>0.378</i>	<i>0.236</i>				<i>0.939</i>	<i>1.063</i>	<i>0.795</i>	<i>0.626</i>

Indicates item not stocked at time of printing - Please enquire for lead time

Page 5 of 16

E&OE Pricing and all details subject to change without notice - Copyright Miniature Bearings Australia Pty Ltd
MBA Size Listings are a guide to sizes only and must not be solely relied on for critical design information.

Pulleys - Timing - 5.000mm Pitch - GT - 9mm Wide - Aluminium

Part Number	Teeth	Max Belt Width mm	Bore (d) mm	Material	Locking Type	Type (See Diagram)	Pitch Diameter (PD) mm	Flange Diameter (FD) mm	Overall Length (OL) mm	Hub Diameter (HD) mm
		<i>inches</i>	<i>inches</i>				<i>inches</i>	<i>inches</i>	<i>inches</i>	<i>inches</i>
# P-050G-015-090FF-AL-G-064	15	9.6	6.350	Aluminium Alloy - Clear Anodised	Set Screw	2	23.86	27.0	20.24	15.88
		<i>0.378</i>	<i>0.250</i>				<i>0.939</i>	<i>1.063</i>	<i>0.797</i>	<i>0.625</i>
# P-050G-015-090P-AL-G-064	15	9.6	6.350	Aluminium Alloy - Clear Anodised	Set Screw	3	23.86	-	20.24	15.88
		<i>0.378</i>	<i>0.250</i>				<i>0.939</i>		<i>0.797</i>	<i>0.625</i>
P-050G-016-090FF-AL-G-060	16	9.6	6.000	Aluminium Alloy - Clear Anodised	Set Screw	2	25.45	27.8	20.20	15.90
		<i>0.378</i>	<i>0.236</i>				<i>1.002</i>	<i>1.094</i>	<i>0.795</i>	<i>0.626</i>
# P-050G-016-090P-AL-G-060	16	9.6	6.000	Aluminium Alloy - Clear Anodised	Set Screw	3	25.45	-	20.20	15.90
		<i>0.378</i>	<i>0.236</i>				<i>1.002</i>		<i>0.795</i>	<i>0.626</i>
# P-050G-016-090FF-AL-G-064	16	9.6	6.350	Aluminium Alloy - Clear Anodised	Set Screw	2	25.45	27.8	20.24	15.88
		<i>0.378</i>	<i>0.250</i>				<i>1.002</i>	<i>1.094</i>	<i>0.797</i>	<i>0.625</i>
# P-050G-016-090P-AL-G-064	16	9.6	6.350	Aluminium Alloy - Clear Anodised	Set Screw	3	25.45	-	20.24	15.88
		<i>0.378</i>	<i>0.250</i>				<i>1.002</i>		<i>0.797</i>	<i>0.625</i>
# P-050G-017-090P-AL-G-060	17	9.6	6.000	Aluminium Alloy - Clear Anodised	Set Screw	3	27.05	-	20.20	15.90
		<i>0.378</i>	<i>0.236</i>				<i>1.065</i>		<i>0.795</i>	<i>0.626</i>

Indicates item not stocked at time of printing - Please enquire for lead time

Page 6 of 16

E&OE Pricing and all details subject to change without notice - Copyright Miniature Bearings Australia Pty Ltd
MBA Size Listings are a guide to sizes only and must not be solely relied on for critical design information.

Pulleys - Timing - 5.000mm Pitch - GT - 9mm Wide - Aluminium

Part Number	Teeth	Max Belt Width mm	Bore (d) mm	Material	Locking Type	Type (See Diagram)	Pitch Diameter (PD) mm	Flange Diameter (FD) mm	Overall Length (OL) mm	Hub Diameter (HD) mm
		<i>inches</i>	<i>inches</i>				<i>inches</i>	<i>inches</i>	<i>inches</i>	<i>inches</i>
# P-050G-017-090FF-AL-G-060	17	9.6	6.000	Aluminium Alloy - Clear Anodised	Set Screw	2	27.05	30.2	20.20	15.90
		<i>0.378</i>	<i>0.236</i>				<i>1.065</i>	<i>1.189</i>	<i>0.795</i>	<i>0.626</i>
# P-050G-017-090P-AL-G-064	17	9.6	6.350	Aluminium Alloy - Clear Anodised	Set Screw	3	27.05	-	20.24	15.88
		<i>0.378</i>	<i>0.250</i>				<i>1.065</i>		<i>0.797</i>	<i>0.625</i>
# P-050G-017-090FF-AL-G-064	17	9.6	6.350	Aluminium Alloy - Clear Anodised	Set Screw	2	27.05	30.2	20.24	15.88
		<i>0.378</i>	<i>0.250</i>				<i>1.065</i>	<i>1.189</i>	<i>0.797</i>	<i>0.625</i>
# P-050G-018-090FF-AL-G-060	18	9.6	6.000	Aluminium Alloy - Clear Anodised	Set Screw	2	28.64	31.8	20.20	17.50
		<i>0.378</i>	<i>0.236</i>				<i>1.128</i>	<i>1.252</i>	<i>0.795</i>	<i>0.689</i>
# P-050G-018-090P-AL-G-060	18	9.6	6.000	Aluminium Alloy - Clear Anodised	Set Screw	3	28.64	-	20.20	17.50
		<i>0.378</i>	<i>0.236</i>				<i>1.128</i>		<i>0.795</i>	<i>0.689</i>
# P-050G-018-090FF-AL-G-064	18	9.6	6.350	Aluminium Alloy - Clear Anodised	Set Screw	2	28.64	31.8	20.24	26.99
		<i>0.378</i>	<i>0.250</i>				<i>1.128</i>	<i>1.252</i>	<i>0.797</i>	<i>1.063</i>
# P-050G-018-090P-AL-G-064	18	9.6	6.350	Aluminium Alloy - Clear Anodised	Set Screw	3	28.64	-	20.24	17.46
		<i>0.378</i>	<i>0.250</i>				<i>1.128</i>		<i>0.797</i>	<i>0.687</i>

Indicates item not stocked at time of printing - Please enquire for lead time

Page 7 of 16

E&OE Pricing and all details subject to change without notice - Copyright Miniature Bearings Australia Pty Ltd
MBA Size Listings are a guide to sizes only and must not be solely relied on for critical design information.

Pulleys - Timing - 5.000mm Pitch - GT - 9mm Wide - Aluminium

Part Number	Teeth	Max Belt Width mm	Bore (d) mm	Material	Locking Type	Type (See Diagram)	Pitch Diameter (PD) mm	Flange Diameter (FD) mm	Overall Length (OL) mm	Hub Diameter (HD) mm
		<i>inches</i>	<i>inches</i>				<i>inches</i>	<i>inches</i>	<i>inches</i>	<i>inches</i>
# P-050G-019-090FF-AL-G-060	19	9.6	6.000	Aluminium Alloy - Clear Anodised	Set Screw	2	30.23	33.3	20.20	19.10
		<i>0.378</i>	<i>0.236</i>				<i>1.190</i>	<i>1.311</i>	<i>0.795</i>	<i>0.752</i>
# P-050G-019-090P-AL-G-060	19	9.6	6.000	Aluminium Alloy - Clear Anodised	Set Screw	3	30.23	-	20.20	19.10
		<i>0.378</i>	<i>0.236</i>				<i>1.190</i>		<i>0.795</i>	<i>0.752</i>
P-050G-019-090FF-AL-G-064	19	9.6	6.350	Aluminium Alloy - Clear Anodised	Set Screw	2	30.23	33.3	20.24	19.05
		<i>0.378</i>	<i>0.250</i>				<i>1.190</i>	<i>1.311</i>	<i>0.797</i>	<i>0.750</i>
# P-050G-019-090P-AL-G-064	19	9.6	6.350	Aluminium Alloy - Clear Anodised	Set Screw	3	30.23	-	20.24	19.05
		<i>0.378</i>	<i>0.250</i>				<i>1.190</i>		<i>0.797</i>	<i>0.750</i>
# P-050G-020-090FF-AL-G-060	20	9.6	6.000	Aluminium Alloy - Clear Anodised	Set Screw	2	31.82	34.9	20.20	20.60
		<i>0.378</i>	<i>0.236</i>				<i>1.253</i>	<i>1.374</i>	<i>0.795</i>	<i>0.811</i>
# P-050G-020-090P-AL-G-060	20	9.6	6.000	Aluminium Alloy - Clear Anodised	Set Screw	3	31.82	-	20.20	23.80
		<i>0.378</i>	<i>0.236</i>				<i>1.253</i>		<i>0.795</i>	<i>0.937</i>
# P-050G-020-090P-AL-G-064	20	9.6	6.350	Aluminium Alloy - Clear Anodised	Set Screw	3	31.82	-	20.24	20.64
		<i>0.378</i>	<i>0.250</i>				<i>1.253</i>		<i>0.797</i>	<i>0.813</i>

Indicates item not stocked at time of printing - Please enquire for lead time

Page 8 of 16

E&OE Pricing and all details subject to change without notice - Copyright Miniature Bearings Australia Pty Ltd

MBA Size Listings are a guide to sizes only and must not be solely relied on for critical design information.

Pulleys - Timing - 5.000mm Pitch - GT - 9mm Wide - Aluminium

Part Number	Teeth	Max Belt Width mm	Bore (d) mm	Material	Locking Type	Type (See Diagram)	Pitch Diameter (PD) mm	Flange Diameter (FD) mm	Overall Length (OL) mm	Hub Diameter (HD) mm
		<i>inches</i>	<i>inches</i>				<i>inches</i>	<i>inches</i>	<i>inches</i>	<i>inches</i>
# P-050G-020-090FF-AL-G-064	20	9.6	6.350	Aluminium Alloy - Clear Anodised	Set Screw	2	31.82	34.9	20.24	20.64
		<i>0.378</i>	<i>0.250</i>				<i>1.253</i>	<i>1.374</i>	<i>0.797</i>	<i>0.813</i>
# P-050G-022-090FF-AL-G-060	22	9.6	6.000	Aluminium Alloy - Clear Anodised	Set Screw	2	35.00	38.1	20.20	23.80
		<i>0.378</i>	<i>0.236</i>				<i>1.378</i>	<i>1.500</i>	<i>0.795</i>	<i>0.937</i>
# P-050G-022-090P-AL-G-060	22	9.6	6.000	Aluminium Alloy - Clear Anodised	Set Screw	3	35.00	-	20.20	28.60
		<i>0.378</i>	<i>0.236</i>				<i>1.378</i>		<i>0.795</i>	<i>1.126</i>
# P-050G-022-090FF-AL-G-064	22	9.6	6.350	Aluminium Alloy - Clear Anodised	Set Screw	2	35.00	38.1	20.24	23.81
		<i>0.378</i>	<i>0.250</i>				<i>1.378</i>	<i>1.500</i>	<i>0.797</i>	<i>0.937</i>
# P-050G-022-090P-AL-G-064	22	9.6	6.350	Aluminium Alloy - Clear Anodised	Set Screw	3	35.00	-	20.24	23.81
		<i>0.378</i>	<i>0.250</i>				<i>1.378</i>		<i>0.797</i>	<i>0.937</i>
# P-050G-024-090FF-AL-G-095	24	9.6	9.525	Aluminium Alloy - Clear Anodised	Set Screw	2	38.18	41.3	23.42	28.58
		<i>0.378</i>	<i>0.375</i>				<i>1.503</i>	<i>1.626</i>	<i>0.922</i>	<i>1.125</i>
# P-050G-024-090P-AL-G-095	24	9.6	9.525	Aluminium Alloy - Clear Anodised	Set Screw	3	38.18	-	23.42	28.58
		<i>0.378</i>	<i>0.375</i>				<i>1.503</i>		<i>0.922</i>	<i>1.125</i>

Indicates item not stocked at time of printing - Please enquire for lead time

Page 9 of 16

E&OE Pricing and all details subject to change without notice - Copyright Miniature Bearings Australia Pty Ltd
MBA Size Listings are a guide to sizes only and must not be solely relied on for critical design information.

Pulleys - Timing - 5.000mm Pitch - GT - 9mm Wide - Aluminium

Part Number	Teeth	Max Belt Width mm	Bore (d) mm	Material	Locking Type	Type (See Diagram)	Pitch Diameter (PD) mm	Flange Diameter (FD) mm	Overall Length (OL) mm	Hub Diameter (HD) mm
		<i>inches</i>	<i>inches</i>				<i>inches</i>	<i>inches</i>	<i>inches</i>	<i>inches</i>
# P-050G-024-090FF-AL-G-100	24	9.6	10.000	Aluminium Alloy - Clear Anodised	Set Screw	2	38.18	41.3	23.40	28.60
		<i>0.378</i>	<i>0.394</i>				<i>1.503</i>	<i>1.626</i>	<i>0.921</i>	<i>1.126</i>
# P-050G-024-090P-AL-G-100	24	9.6	10.000	Aluminium Alloy - Clear Anodised	Set Screw	3	38.18	-	23.40	28.60
		<i>0.378</i>	<i>0.394</i>				<i>1.503</i>		<i>0.921</i>	<i>1.126</i>
# P-050G-025-090FF-AL-G-095	25	9.6	9.525	Aluminium Alloy - Clear Anodised	Set Screw	2	39.77	42.9	23.42	28.58
		<i>0.378</i>	<i>0.375</i>				<i>1.566</i>	<i>1.689</i>	<i>0.922</i>	<i>1.125</i>
# P-050G-025-090P-AL-G-095	25	9.6	9.525	Aluminium Alloy - Clear Anodised	Set Screw	3	39.77	-	23.42	28.58
		<i>0.378</i>	<i>0.375</i>				<i>1.566</i>		<i>0.922</i>	<i>1.125</i>
# P-050G-025-090P-AL-G-100	25	9.6	10.000	Aluminium Alloy - Clear Anodised	Set Screw	3	39.77	-	23.40	28.60
		<i>0.378</i>	<i>0.394</i>				<i>1.566</i>		<i>0.921</i>	<i>1.126</i>
P-050G-025-090FF-AL-G-100	25	9.6	10.000	Aluminium Alloy - Clear Anodised	Set Screw	2	39.77	42.9	23.40	28.60
		<i>0.378</i>	<i>0.394</i>				<i>1.566</i>	<i>1.689</i>	<i>0.921</i>	<i>1.126</i>
# P-050G-026-090FF-AL-G-095	26	9.6	9.525	Aluminium Alloy - Clear Anodised	Set Screw	2	41.36	44.5	23.42	28.58
		<i>0.378</i>	<i>0.375</i>				<i>1.628</i>	<i>1.752</i>	<i>0.922</i>	<i>1.125</i>

Indicates item not stocked at time of printing - Please enquire for lead time

Page 10 of 16

E&OE Pricing and all details subject to change without notice - Copyright Miniature Bearings Australia Pty Ltd

MBA Size Listings are a guide to sizes only and must not be solely relied on for critical design information.

Pulleys - Timing - 5.000mm Pitch - GT - 9mm Wide - Aluminium

Part Number	Teeth	Max Belt Width mm	Bore (d) mm	Material	Locking Type	Type (See Diagram)	Pitch Diameter (PD) mm	Flange Diameter (FD) mm	Overall Length (OL) mm	Hub Diameter (HD) mm
		<i>inches</i>	<i>inches</i>				<i>inches</i>	<i>inches</i>	<i>inches</i>	<i>inches</i>
# P-050G-026-090P-AL-G-095	26	9.6	9.525	Aluminium Alloy - Clear Anodised	Set Screw	3	41.36	-	23.42	28.58
		<i>0.378</i>	<i>0.375</i>				<i>1.628</i>		<i>0.922</i>	<i>1.125</i>
# P-050G-026-090FF-AL-G-100	26	9.6	10.000	Aluminium Alloy - Clear Anodised	Set Screw	2	41.36	44.5	23.40	28.60
		<i>0.378</i>	<i>0.394</i>				<i>1.628</i>	<i>1.752</i>	<i>0.921</i>	<i>1.126</i>
# P-050G-026-090P-AL-G-100	26	9.6	10.000	Aluminium Alloy - Clear Anodised	Set Screw	3	41.36	-	23.40	38.10
		<i>0.378</i>	<i>0.394</i>				<i>1.628</i>		<i>0.921</i>	<i>1.500</i>
# P-050G-028-090FF-AL-G-120	28	9.6	12.000	Aluminium Alloy - Clear Anodised	Set Screw	2	44.55	47.6	26.60	38.10
		<i>0.378</i>	<i>0.472</i>				<i>1.754</i>	<i>1.874</i>	<i>1.047</i>	<i>1.500</i>
# P-050G-028-090P-AL-G-120	28	9.6	12.000	Aluminium Alloy - Clear Anodised	Set Screw	3	44.55	-	26.60	38.10
		<i>0.378</i>	<i>0.472</i>				<i>1.754</i>		<i>1.047</i>	<i>1.500</i>
# P-050G-028-090P-AL-G-127	28	9.6	12.700	Aluminium Alloy - Clear Anodised	Set Screw	3	44.55	-	26.59	38.10
		<i>0.378</i>	<i>0.500</i>				<i>1.754</i>		<i>1.047</i>	<i>1.500</i>
# P-050G-028-090FF-AL-G-127	28	9.6	12.700	Aluminium Alloy - Clear Anodised	Set Screw	2	44.55	47.6	26.59	38.10
		<i>0.378</i>	<i>0.500</i>				<i>1.754</i>	<i>1.874</i>	<i>1.047</i>	<i>1.500</i>

Indicates item not stocked at time of printing - Please enquire for lead time

Page 11 of 16

E&OE Pricing and all details subject to change without notice - Copyright Miniature Bearings Australia Pty Ltd
MBA Size Listings are a guide to sizes only and must not be solely relied on for critical design information.

Pulleys - Timing - 5.000mm Pitch - GT - 9mm Wide - Aluminium

Part Number	Teeth	Max Belt Width mm	Bore (d) mm	Material	Locking Type	Type (See Diagram)	Pitch Diameter (PD) mm	Flange Diameter (FD) mm	Overall Length (OL) mm	Hub Diameter (HD) mm
		<i>inches</i>	<i>inches</i>				<i>inches</i>	<i>inches</i>	<i>inches</i>	<i>inches</i>
# P-050G-030-090P-AL-G-120	30	9.6	12.000	Aluminium Alloy - Clear Anodised	Set Screw	3	47.73	-	26.60	38.10
		<i>0.378</i>	<i>0.472</i>				<i>1.879</i>		<i>1.047</i>	<i>1.500</i>
# P-050G-030-090FF-AL-G-120	30	9.6	12.000	Aluminium Alloy - Clear Anodised	Set Screw	2	47.73	50.8	26.60	38.10
		<i>0.378</i>	<i>0.472</i>				<i>1.879</i>	<i>2.000</i>	<i>1.047</i>	<i>1.500</i>
# P-050G-030-090P-AL-G-127	30	9.6	12.700	Aluminium Alloy - Clear Anodised	Set Screw	3	47.73	-	26.59	38.10
		<i>0.378</i>	<i>0.500</i>				<i>1.879</i>		<i>1.047</i>	<i>1.500</i>
# P-050G-030-090FF-AL-G-127	30	9.6	12.700	Aluminium Alloy - Clear Anodised	Set Screw	2	47.73	50.8	26.59	38.10
		<i>0.378</i>	<i>0.500</i>				<i>1.879</i>	<i>2.000</i>	<i>1.047</i>	<i>1.500</i>
# P-050G-032-090FF-AL-G-120	32	9.6	12.000	Aluminium Alloy - Clear Anodised	Set Screw	2	50.91	54.0	26.60	38.10
		<i>0.378</i>	<i>0.472</i>				<i>2.004</i>	<i>2.126</i>	<i>1.047</i>	<i>1.500</i>
# P-050G-032-090P-AL-G-120	32	9.6	12.000	Aluminium Alloy - Clear Anodised	Set Screw	3	50.91	-	26.60	38.10
		<i>0.378</i>	<i>0.472</i>				<i>2.004</i>		<i>1.047</i>	<i>1.500</i>
# P-050G-032-090FF-AL-G-127	32	9.6	12.700	Aluminium Alloy - Clear Anodised	Set Screw	2	50.91	54.0	26.59	38.10
		<i>0.378</i>	<i>0.500</i>				<i>2.004</i>	<i>2.126</i>	<i>1.047</i>	<i>1.500</i>

Indicates item not stocked at time of printing - Please enquire for lead time

Page 12 of 16

E&OE Pricing and all details subject to change without notice - Copyright Miniature Bearings Australia Pty Ltd

MBA Size Listings are a guide to sizes only and must not be solely relied on for critical design information.

Pulleys - Timing - 5.000mm Pitch - GT - 9mm Wide - Aluminium

Part Number	Teeth	Max Belt Width mm	Bore (d) mm	Material	Locking Type	Type (See Diagram)	Pitch Diameter (PD) mm	Flange Diameter (FD) mm	Overall Length (OL) mm	Hub Diameter (HD) mm
		<i>inches</i>	<i>inches</i>				<i>inches</i>	<i>inches</i>	<i>inches</i>	<i>inches</i>
# P-050G-032-090P-AL-G-127	32	9.6	12.700	Aluminium Alloy - Clear Anodised	Set Screw	3	50.91	-	26.59	38.10
		<i>0.378</i>	<i>0.500</i>				<i>2.004</i>		<i>1.047</i>	<i>1.500</i>
# P-050G-034-090FF-AL-G-120	34	9.6	12.000	Aluminium Alloy - Clear Anodised	Set Screw	2	54.09	57.2	26.60	38.10
		<i>0.378</i>	<i>0.472</i>				<i>2.130</i>	<i>2.252</i>	<i>1.047</i>	<i>1.500</i>
# P-050G-034-090P-AL-G-120	34	9.6	12.000	Aluminium Alloy - Clear Anodised	Set Screw	3	54.09	-	26.60	38.10
		<i>0.378</i>	<i>0.472</i>				<i>2.130</i>		<i>1.047</i>	<i>1.500</i>
# P-050G-034-090P-AL-G-127	34	9.6	12.700	Aluminium Alloy - Clear Anodised	Set Screw	3	54.09	-	26.59	38.10
		<i>0.378</i>	<i>0.500</i>				<i>2.130</i>		<i>1.047</i>	<i>1.500</i>
# P-050G-034-090FF-AL-G-127	34	9.6	12.700	Aluminium Alloy - Clear Anodised	Set Screw	2	54.09	57.2	26.59	38.10
		<i>0.378</i>	<i>0.500</i>				<i>2.130</i>	<i>2.252</i>	<i>1.047</i>	<i>1.500</i>
P-050G-036-090P-AL-G-120	36	9.6	12.000	Aluminium Alloy - Clear Anodised	Set Screw	3	57.27	-	26.60	38.10
		<i>0.378</i>	<i>0.472</i>				<i>2.255</i>		<i>1.047</i>	<i>1.500</i>
# P-050G-036-090P-AL-G-127	36	9.6	12.700	Aluminium Alloy - Clear Anodised	Set Screw	3	57.27	-	26.59	38.10
		<i>0.378</i>	<i>0.500</i>				<i>2.255</i>		<i>1.047</i>	<i>1.500</i>

Indicates item not stocked at time of printing - Please enquire for lead time

Page 13 of 16

E&OE Pricing and all details subject to change without notice - Copyright Miniature Bearings Australia Pty Ltd
MBA Size Listings are a guide to sizes only and must not be solely relied on for critical design information.

Pulleys - Timing - 5.000mm Pitch - GT - 9mm Wide - Aluminium

Part Number	Teeth	Max Belt Width mm	Bore (d) mm	Material	Locking Type	Type (See Diagram)	Pitch Diameter (PD) mm	Flange Diameter (FD) mm	Overall Length (OL) mm	Hub Diameter (HD) mm
		<i>inches</i>	<i>inches</i>				<i>inches</i>	<i>inches</i>	<i>inches</i>	<i>inches</i>
# P-050G-038-090P-AL-G-120	38	9.6	12.000	Aluminium Alloy - Clear Anodised	Set Screw	3	60.45	-	26.60	38.10
		<i>0.378</i>	<i>0.472</i>				<i>2.380</i>		<i>1.047</i>	<i>1.500</i>
# P-050G-038-090P-AL-G-127	38	9.6	12.700	Aluminium Alloy - Clear Anodised	Set Screw	3	60.45	-	26.59	38.10
		<i>0.378</i>	<i>0.500</i>				<i>2.380</i>		<i>1.047</i>	<i>1.500</i>
# P-050G-040-090P-AL-G-120	40	9.6	12.000	Aluminium Alloy - Clear Anodised	Set Screw	3	63.64	-	26.60	38.10
		<i>0.378</i>	<i>0.472</i>				<i>2.506</i>		<i>1.047</i>	<i>1.500</i>
# P-050G-040-090P-AL-G-127	40	9.6	12.700	Aluminium Alloy - Clear Anodised	Set Screw	3	63.64	-	26.59	38.10
		<i>0.378</i>	<i>0.500</i>				<i>2.506</i>		<i>1.047</i>	<i>1.500</i>
# P-050G-044-090P-AL-G-120	44	9.6	12.000	Aluminium Alloy - Clear Anodised	Set Screw	3	70.00	-	26.60	38.10
		<i>0.378</i>	<i>0.472</i>				<i>2.756</i>		<i>1.047</i>	<i>1.500</i>
# P-050G-044-090P-AL-G-127	44	9.6	12.700	Aluminium Alloy - Clear Anodised	Set Screw	3	70.00	-	26.59	38.10
		<i>0.378</i>	<i>0.500</i>				<i>2.756</i>		<i>1.047</i>	<i>1.500</i>
# P-050G-048-090P-AL-G-120	48	9.6	12.000	Aluminium Alloy - Clear Anodised	Set Screw	3	76.36	-	26.60	38.10
		<i>0.378</i>	<i>0.472</i>				<i>3.006</i>		<i>1.047</i>	<i>1.500</i>

Indicates item not stocked at time of printing - Please enquire for lead time

Page 14 of 16

E&OE Pricing and all details subject to change without notice - Copyright Miniature Bearings Australia Pty Ltd
MBA Size Listings are a guide to sizes only and must not be solely relied on for critical design information.

Pulleys - Timing - 5.000mm Pitch - GT - 9mm Wide - Aluminium

Part Number	Teeth	Max Belt Width mm	Bore (d) mm	Material	Locking Type	Type (See Diagram)	Pitch Diameter (PD) mm	Flange Diameter (FD) mm	Overall Length (OL) mm	Hub Diameter (HD) mm
		<i>inches</i>	<i>inches</i>				<i>inches</i>	<i>inches</i>	<i>inches</i>	<i>inches</i>
# P-050G-048-090P-AL-G-127	48	9.6	12.700	Aluminium Alloy - Clear Anodised	Set Screw	3	76.36	-	26.59	38.10
		<i>0.378</i>	<i>0.500</i>				<i>3.006</i>		<i>1.047</i>	<i>1.500</i>
# P-050G-050-090P-AL-G-120	50	9.6	12.000	Aluminium Alloy - Clear Anodised	Set Screw	3	79.55	-	26.60	38.10
		<i>0.378</i>	<i>0.472</i>				<i>3.132</i>		<i>1.047</i>	<i>1.500</i>
# P-050G-050-090P-AL-G-127	50	9.6	12.700	Aluminium Alloy - Clear Anodised	Set Screw	3	79.55	-	26.59	38.10
		<i>0.378</i>	<i>0.500</i>				<i>3.132</i>		<i>1.047</i>	<i>1.500</i>
# P-050G-056-090P-AL-G-120	56	9.6	12.000	Aluminium Alloy - Clear Anodised	Set Screw	3	89.09	-	26.60	38.10
		<i>0.378</i>	<i>0.472</i>				<i>3.507</i>		<i>1.047</i>	<i>1.500</i>
# P-050G-056-090P-AL-G-127	56	9.6	12.700	Aluminium Alloy - Clear Anodised	Set Screw	3	89.09	-	26.59	38.10
		<i>0.378</i>	<i>0.500</i>				<i>3.507</i>		<i>1.047</i>	<i>1.500</i>
# P-050G-060-090P-AL-G-120	60	9.6	12.000	Aluminium Alloy - Clear Anodised	Set Screw	3	95.45	-	26.60	38.10
		<i>0.378</i>	<i>0.472</i>				<i>3.758</i>		<i>1.047</i>	<i>1.500</i>
# P-050G-060-090P-AL-G-127	60	9.6	12.700	Aluminium Alloy - Clear Anodised	Set Screw	3	95.45	-	26.59	38.10
		<i>0.378</i>	<i>0.500</i>				<i>3.758</i>		<i>1.047</i>	<i>1.500</i>

Indicates item not stocked at time of printing - Please enquire for lead time

Page 15 of 16

E&OE Pricing and all details subject to change without notice - Copyright Miniature Bearings Australia Pty Ltd
MBA Size Listings are a guide to sizes only and must not be solely relied on for critical design information.

Pulleys - Timing - 5.000mm Pitch - GT - 9mm Wide - Aluminium

Part Number	Teeth	Max Belt Width mm	Bore (d) mm	Material	Locking Type	Type (See Diagram)	Pitch Diameter (PD) mm	Flange Diameter (FD) mm	Overall Length (OL) mm	Hub Diameter (HD) mm
		<i>inches</i>	<i>inches</i>				<i>inches</i>	<i>inches</i>	<i>inches</i>	<i>inches</i>
# P-050G-062-090P-AL-G-120	62	9.6	12.000	Aluminium Alloy - Clear Anodised	Set Screw	3	98.64	-	26.60	38.10
		<i>0.378</i>	<i>0.472</i>				<i>3.883</i>		<i>1.047</i>	<i>1.500</i>
# P-050G-062-090P-AL-G-127	62	9.6	12.700	Aluminium Alloy - Clear Anodised	Set Screw	3	98.64	-	26.59	38.10
		<i>0.378</i>	<i>0.500</i>				<i>3.883</i>		<i>1.047</i>	<i>1.500</i>
# P-050G-070-090P-AL-G-120	70	9.6	12.000	Aluminium Alloy - Clear Anodised	Set Screw	3	111.36	-	26.60	38.10
		<i>0.378</i>	<i>0.472</i>				<i>4.384</i>		<i>1.047</i>	<i>1.500</i>
# P-050G-070-090P-AL-G-127	70	9.6	12.700	Aluminium Alloy - Clear Anodised	Set Screw	3	111.36	-	26.59	38.10
		<i>0.378</i>	<i>0.500</i>				<i>4.384</i>		<i>1.047</i>	<i>1.500</i>
# P-050G-072-090P-AL-G-120	72	9.6	12.000	Aluminium Alloy - Clear Anodised	Set Screw	3	114.55	-	26.60	38.10
		<i>0.378</i>	<i>0.472</i>				<i>4.510</i>		<i>1.047</i>	<i>1.500</i>
# P-050G-072-090P-AL-G-127	72	9.6	12.700	Aluminium Alloy - Clear Anodised	Set Screw	3	114.55	-	26.59	38.10
		<i>0.378</i>	<i>0.500</i>				<i>4.510</i>		<i>1.047</i>	<i>1.500</i>

Indicates item not stocked at time of printing - Please enquire for lead time

Page 16 of 16

E&OE Pricing and all details subject to change without notice - Copyright Miniature Bearings Australia Pty Ltd

MBA Size Listings are a guide to sizes only and must not be solely relied on for critical design information.

DISTRIBUTED BY

Distributed By:

