



# **Pulleys - Timing - 5.000mm Pitch - T5 - 10mm Wide - Aluminium**

10/4/2018

# Indicates item not stocked at time of printing - Please enquire for lead time

E&OE Pricing and all details subject to change without notice - Copyright Miniature Bearings Australia Pty Ltd

MBA Size Listings are a guide to sizes only and must not be solely relied on for critical design information.

## INFORMATION

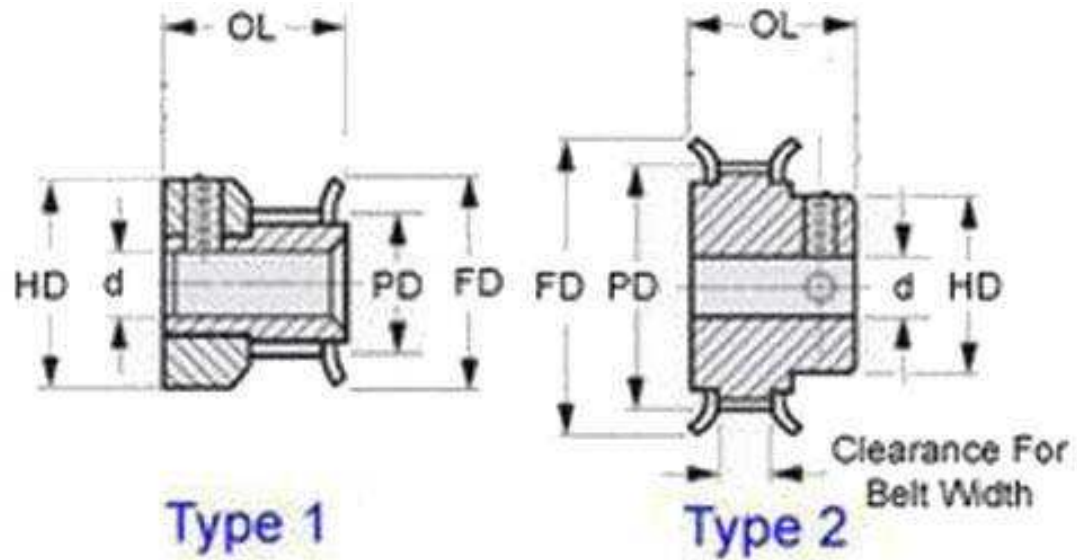
Timing Pulleys to suit T Series 5.000mm Pitch Timing Belts. Suits belts 9.5 to 10.0mm wide.

This catalogue to be read in conjunction with information at  
<http://www.minibearings.com.au//partslist/beltstiming5000mmpitcht510mmwide/beltstiming5000mmpitcht510mmwide/A/1/>  
<http://www.minibearings.com.au//partslist/beltstiming5000mmpitcht5doublesided10mmwide/beltstiming5000mmpitcht5doublesided10mmwide/A/1/>  
<http://www.minibearings.com.au//www.smallparts.com.au/store/categories/easy+kits/>

# Indicates item not stocked at time of printing - Please enquire for lead time

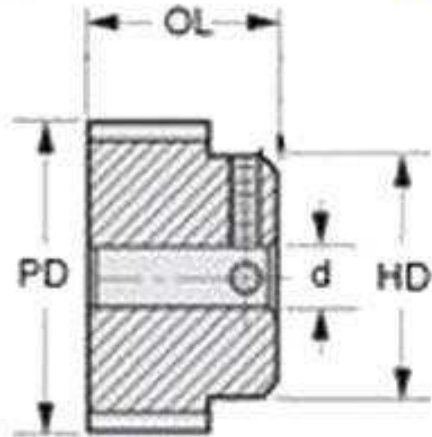
E&OE Pricing and all details subject to change without notice - Copyright Miniature Bearings Australia Pty Ltd

MBA Size Listings are a guide to sizes only and must not be solely relied on for critical design information.



Type 1

Type 2



Type 3

# Indicates item not stocked at time of printing - Please enquire for lead time

E&OE Pricing and all details subject to change without notice - Copyright Miniature Bearings Australia Pty Ltd

MBA Size Listings are a guide to sizes only and must not be solely relied on for critical design information.

## Pulleys - Timing - 5.000mm Pitch - T5 - 10mm Wide - Aluminium

Part Number	Teeth	Max Belt Width mm	Bore (d) mm	Material	Locking Type	Type (See Diagram)	Pitch Diameter (PD) mm	Flange Diameter (FD) mm	Overall Length (OL) mm	Hub Diameter (HD) mm
		<i>inches</i>	<i>inches</i>				<i>inches</i>	<i>inches</i>	<i>inches</i>	<i>inches</i>
# P-050T-010-100FF-AL-N-040	10	10	4	Aluminium Alloy - Clear Anodised	None	2	15.91	20.0	21.00	8.00
		<i>0.394</i>	<i>0.157</i>				<i>0.626</i>	<i>0.787</i>	<i>0.827</i>	<i>0.315</i>
P-050T-010-100FF-AL-G-040	10	10	4	Aluminium Alloy - Clear Anodised	Set Screw	2	15.91	20.0	21.00	8.00
		<i>0.394</i>	<i>0.157</i>				<i>0.626</i>	<i>0.787</i>	<i>0.827</i>	<i>0.315</i>
P-050T-012-100FF-AL-G-040	12	10	4	Aluminium Alloy - Clear Anodised	Set Screw	2	19.09	23.0	21.00	11.00
		<i>0.394</i>	<i>0.157</i>				<i>0.752</i>	<i>0.906</i>	<i>0.827</i>	<i>0.433</i>
# P-050T-012-100FF-AL-N-040	12	10	4	Aluminium Alloy - Clear Anodised	None	2	19.09	22.2	21.00	12.00
		<i>0.394</i>	<i>0.157</i>				<i>0.752</i>	<i>0.874</i>	<i>0.827</i>	<i>0.472</i>
P-050T-014-100FF-AL-G-040	14	10	4	Aluminium Alloy - Clear Anodised	Set Screw	2	22.27	25.5	21.00	14.00
		<i>0.394</i>	<i>0.157</i>				<i>0.877</i>	<i>1.004</i>	<i>0.827</i>	<i>0.551</i>
# P-050T-014-100FF-AL-N-040	14	10	4	Aluminium Alloy - Clear Anodised	None	2	22.27	25.4	21.00	14.00
		<i>0.394</i>	<i>0.157</i>				<i>0.877</i>	<i>1.000</i>	<i>0.827</i>	<i>0.551</i>
P-050T-015-100FF-AL-G-060	15	10	6	Aluminium Alloy - Clear Anodised	Set Screws (2)	2	23.86	26.0	21.00	16.00
		<i>0.394</i>	<i>0.236</i>				<i>0.939</i>	<i>1.024</i>	<i>0.827</i>	<i>0.630</i>

# Indicates item not stocked at time of printing - Please enquire for lead time

Page 4 of 9

E&OE Pricing and all details subject to change without notice - Copyright Miniature Bearings Australia Pty Ltd  
MBA Size Listings are a guide to sizes only and must not be solely relied on for critical design information.

## Pulleys - Timing - 5.000mm Pitch - T5 - 10mm Wide - Aluminium

Part Number	Teeth	Max Belt Width mm	Bore (d) mm	Material	Locking Type	Type (See Diagram)	Pitch Diameter (PD) mm	Flange Diameter (FD) mm	Overall Length (OL) mm	Hub Diameter (HD) mm
		<i>inches</i>	<i>inches</i>				<i>inches</i>	<i>inches</i>	<i>inches</i>	<i>inches</i>
# P-050T-015-100FF-AL-N-060	15	10	6	Aluminium Alloy - Clear Anodised	None	2	23.86	27.0	21.00	16.00
		<i>0.394</i>	<i>0.236</i>				<i>0.939</i>	<i>1.063</i>	<i>0.827</i>	<i>0.630</i>
P-050T-016-100FF-AL-G-060	16	10	6	Aluminium Alloy - Clear Anodised	Set Screws (2)	2	25.45	32.0	21.00	18.00
		<i>0.394</i>	<i>0.236</i>				<i>1.002</i>	<i>1.260</i>	<i>0.827</i>	<i>0.709</i>
# P-050T-016-100FF-AL-N-060	16	10	6	Aluminium Alloy - Clear Anodised	None	2	25.45	30.0	21.00	18.00
		<i>0.394</i>	<i>0.236</i>				<i>1.002</i>	<i>1.181</i>	<i>0.827</i>	<i>0.709</i>
# P-050T-018-100FF-AL-N-060	18	10	6	Aluminium Alloy - Clear Anodised	None	2	28.64	33.0	21.00	20.00
		<i>0.394</i>	<i>0.236</i>				<i>1.128</i>	<i>1.299</i>	<i>0.827</i>	<i>0.787</i>
P-050T-018-100FF-AL-G-060	18	10	6	Aluminium Alloy - Clear Anodised	Set Screws (2)	2	28.64	32.0	21.00	20.00
		<i>0.394</i>	<i>0.236</i>				<i>1.128</i>	<i>1.260</i>	<i>0.827</i>	<i>0.787</i>
# P-050T-019-100FF-AL-G-060	19	10	6	Aluminium Alloy - Clear Anodised	Set Screws (2)	2	30.23	36.0	21.00	22.00
		<i>0.394</i>	<i>0.236</i>				<i>1.190</i>	<i>1.417</i>	<i>0.827</i>	<i>0.866</i>
# P-050T-019-100FF-AL-N-060	19	10	6	Aluminium Alloy - Clear Anodised	None	2	30.23	33.3	21.00	22.00
		<i>0.394</i>	<i>0.236</i>				<i>1.190</i>	<i>1.311</i>	<i>0.827</i>	<i>0.866</i>

# Indicates item not stocked at time of printing - Please enquire for lead time

Page 5 of 9

E&OE Pricing and all details subject to change without notice - Copyright Miniature Bearings Australia Pty Ltd  
MBA Size Listings are a guide to sizes only and must not be solely relied on for critical design information.

## Pulleys - Timing - 5.000mm Pitch - T5 - 10mm Wide - Aluminium

Part Number	Teeth	Max Belt Width mm	Bore (d) mm	Material	Locking Type	Type (See Diagram)	Pitch Diameter (PD) mm	Flange Diameter (FD) mm	Overall Length (OL) mm	Hub Diameter (HD) mm
		<i>inches</i>	<i>inches</i>				<i>inches</i>	<i>inches</i>	<i>inches</i>	<i>inches</i>
# P-050T-020-100FF-AL-G-060	20	10	6	Aluminium Alloy - Clear Anodised	Set Screws (2)	2	31.82	36.0	21.00	23.00
		<i>0.394</i>	<i>0.236</i>				<i>1.253</i>	<i>1.417</i>	<i>0.827</i>	<i>0.906</i>
# P-050T-020-100FF-AL-N-060	20	10	6	Aluminium Alloy - Clear Anodised	None	2	31.82	35.0	21.00	24.00
		<i>0.394</i>	<i>0.236</i>				<i>1.253</i>	<i>1.378</i>	<i>0.827</i>	<i>0.945</i>
P-050T-022-100FF-AL-G-060	22	10	6	Aluminium Alloy - Clear Anodised	Set Screws (2)	2	35.00	38.0	21.00	24.00
		<i>0.394</i>	<i>0.236</i>				<i>1.378</i>	<i>1.496</i>	<i>0.827</i>	<i>0.945</i>
# P-050T-022-100FF-AL-N-060	22	10	6	Aluminium Alloy - Clear Anodised	None	2	35.00	38.0	21.00	25.00
		<i>0.394</i>	<i>0.236</i>				<i>1.378</i>	<i>1.496</i>	<i>0.827</i>	<i>0.984</i>
# P-050T-024-100FF-AL-N-060	24	10	6	Aluminium Alloy - Clear Anodised	None	2	38.18	41.3	21.00	26.00
		<i>0.394</i>	<i>0.236</i>				<i>1.503</i>	<i>1.626</i>	<i>0.827</i>	<i>1.024</i>
# P-050T-024-100FF-AL-G-060	24	10	6	Aluminium Alloy - Clear Anodised	Set Screws (2)	2	38.18	42.5	21.00	26.00
		<i>0.394</i>	<i>0.236</i>				<i>1.503</i>	<i>1.673</i>	<i>0.827</i>	<i>1.024</i>
P-050T-025-100FF-AL-G-060	25	10	6	Aluminium Alloy - Clear Anodised	Set Screws (2)	2	39.77	44.5	21.00	26.00
		<i>0.394</i>	<i>0.236</i>				<i>1.566</i>	<i>1.752</i>	<i>0.827</i>	<i>1.024</i>

# Indicates item not stocked at time of printing - Please enquire for lead time

Page 6 of 9

E&OE Pricing and all details subject to change without notice - Copyright Miniature Bearings Australia Pty Ltd

MBA Size Listings are a guide to sizes only and must not be solely relied on for critical design information.

## Pulleys - Timing - 5.000mm Pitch - T5 - 10mm Wide - Aluminium

Part Number	Teeth	Max Belt Width mm	Bore (d) mm	Material	Locking Type	Type (See Diagram)	Pitch Diameter (PD) mm	Flange Diameter (FD) mm	Overall Length (OL) mm	Hub Diameter (HD) mm
		<i>inches</i>	<i>inches</i>				<i>inches</i>	<i>inches</i>	<i>inches</i>	<i>inches</i>
# P-050T-025-100FF-AL-N-060	25	10	6	Aluminium Alloy - Clear Anodised	None	2	39.77	43.0	21.00	26.00
		<i>0.394</i>	<i>0.236</i>				<i>1.566</i>	<i>1.693</i>	<i>0.827</i>	<i>1.024</i>
# P-050T-026-100FF-AL-G-060	26	10	6	Aluminium Alloy - Clear Anodised	Set Screws (2)	2	41.36	44.5	21.00	26.00
		<i>0.394</i>	<i>0.236</i>				<i>1.628</i>	<i>1.752</i>	<i>0.827</i>	<i>1.024</i>
# P-050T-026-100FF-AL-N-060	26	10	6	Aluminium Alloy - Clear Anodised	None	2	41.36	44.5	21.00	26.00
		<i>0.394</i>	<i>0.236</i>				<i>1.628</i>	<i>1.752</i>	<i>0.827</i>	<i>1.024</i>
# P-050T-027-100FF-AL-G-080	27	10	8	Aluminium Alloy - Clear Anodised	Set Screws (2)	2	42.95	47.5	21.00	30.00
		<i>0.394</i>	<i>0.315</i>				<i>1.691</i>	<i>1.870</i>	<i>0.827</i>	<i>1.181</i>
# P-050T-027-100FF-AL-N-080	27	10	8	Aluminium Alloy - Clear Anodised	None	2	42.95	46.0	21.00	30.00
		<i>0.394</i>	<i>0.315</i>				<i>1.691</i>	<i>1.811</i>	<i>0.827</i>	<i>1.181</i>
P-050T-028-100FF-AL-G-080	28	10	8	Aluminium Alloy - Clear Anodised	Set Screws (2)	2	44.55	47.5	21.00	32.00
		<i>0.394</i>	<i>0.315</i>				<i>1.754</i>	<i>1.870</i>	<i>0.827</i>	<i>1.260</i>
# P-050T-030-100FF-AL-N-080	30	10	8	Aluminium Alloy - Clear Anodised	None	2	47.73	51.0	21.00	34.00
		<i>0.394</i>	<i>0.315</i>				<i>1.879</i>	<i>2.008</i>	<i>0.827</i>	<i>1.339</i>

# Indicates item not stocked at time of printing - Please enquire for lead time

Page 7 of 9

E&OE Pricing and all details subject to change without notice - Copyright Miniature Bearings Australia Pty Ltd

MBA Size Listings are a guide to sizes only and must not be solely relied on for critical design information.

## Pulleys - Timing - 5.000mm Pitch - T5 - 10mm Wide - Aluminium

Part Number	Teeth	Max Belt Width mm	Bore (d) mm	Material	Locking Type	Type (See Diagram)	Pitch Diameter (PD) mm	Flange Diameter (FD) mm	Overall Length (OL) mm	Hub Diameter (HD) mm
		<i>inches</i>	<i>inches</i>				<i>inches</i>	<i>inches</i>	<i>inches</i>	<i>inches</i>
# P-050T-030-100FF-AL-G-080	30	10	8	Aluminium Alloy - Clear Anodised	Set Screws (2)	2	47.73	51.0	21.00	34.00
		<i>0.394</i>	<i>0.315</i>				<i>1.879</i>	<i>2.008</i>	<i>0.827</i>	<i>1.339</i>
P-050T-032-100FF-AL-G-080	32	10	8	Aluminium Alloy - Clear Anodised	Set Screws (2)	2	50.91	54.0	21.00	35.00
		<i>0.394</i>	<i>0.315</i>				<i>2.004</i>	<i>2.126</i>	<i>0.827</i>	<i>1.378</i>
# P-050T-032-100FF-AL-N-080	32	10	8	Aluminium Alloy - Clear Anodised	None	2	50.91	54.0	21.00	38.00
		<i>0.394</i>	<i>0.315</i>				<i>2.004</i>	<i>2.126</i>	<i>0.827</i>	<i>1.496</i>
P-050T-036-100FF-AL-G-080	36	10	8	Aluminium Alloy - Clear Anodised	Set Screws (2)	2	57.27	63.5	21.00	38.00
		<i>0.394</i>	<i>0.315</i>				<i>2.255</i>	<i>2.500</i>	<i>0.827</i>	<i>1.496</i>
# P-050T-036-100FF-AL-N-080	36	10	8	Aluminium Alloy - Clear Anodised	None	2	57.27	60.3	21.00	38.00
		<i>0.394</i>	<i>0.315</i>				<i>2.255</i>	<i>2.374</i>	<i>0.827</i>	<i>1.496</i>
# P-050T-040-100FF-AL-G-080	40	10	8	Aluminium Alloy - Clear Anodised	Set Screws (2)	2	63.64	66.5	21.00	40.00
		<i>0.394</i>	<i>0.315</i>				<i>2.506</i>	<i>2.618</i>	<i>0.827</i>	<i>1.575</i>
# P-050T-040-100FF-AL-N-080	40	10	8	Aluminium Alloy - Clear Anodised	None	2	63.63	66.7	21.00	40.00
		<i>0.394</i>	<i>0.315</i>				<i>2.505</i>	<i>2.626</i>	<i>0.827</i>	<i>1.575</i>

# Indicates item not stocked at time of printing - Please enquire for lead time

Page 8 of 9

E&OE Pricing and all details subject to change without notice - Copyright Miniature Bearings Australia Pty Ltd

MBA Size Listings are a guide to sizes only and must not be solely relied on for critical design information.



## Pulleys - Timing - 5.000mm Pitch - T5 - 10mm Wide - Aluminium

Part Number	Teeth	Max Belt Width mm	Bore (d) mm	Material	Locking Type	Type (See Diagram)	Pitch Diameter (PD) mm	Flange Diameter (FD) mm	Overall Length (OL) mm	Hub Diameter (HD) mm
		<i>inches</i>	<i>inches</i>				<i>inches</i>	<i>inches</i>	<i>inches</i>	<i>inches</i>
# P-050T-042-100FF-AL-G-080	42	10	8	Aluminium Alloy - Clear Anodised	Set Screws (2)	2	66.82	70.0	21.00	40.00
		<i>0.394</i>	<i>0.315</i>				<i>2.631</i>	<i>2.756</i>	<i>0.827</i>	<i>1.575</i>
# P-050T-044-100P-AL-N-080	44	10	8	Aluminium Alloy - Clear Anodised	None	3	70.00	-	21.00	45.00
		<i>0.394</i>	<i>0.315</i>				<i>2.756</i>		<i>0.827</i>	<i>1.772</i>
# P-050T-048-100P-AL-N-080	48	10	8	Aluminium Alloy - Clear Anodised	None	3	76.36	-	21.00	50.00
		<i>0.394</i>	<i>0.315</i>				<i>3.006</i>		<i>0.827</i>	<i>1.969</i>
# P-050T-060-100P-AL-N-080	60	10	8	Aluminium Alloy - Clear Anodised	None	3	95.45	-	21.00	65.00
		<i>0.394</i>	<i>0.315</i>				<i>3.758</i>		<i>0.827</i>	<i>2.559</i>

# Indicates item not stocked at time of printing - Please enquire for lead time

Page 9 of 9

E&OE Pricing and all details subject to change without notice - Copyright Miniature Bearings Australia Pty Ltd  
MBA Size Listings are a guide to sizes only and must not be solely relied on for critical design information.

DISTRIBUTED BY

Distributed By:

