



Pulleys - Timing - 5.080mm Pitch - XL - 6.4mm Wide - Aluminium

10/4/2018

Indicates item not stocked at time of printing - Please enquire for lead time

E&OE Pricing and all details subject to change without notice - Copyright Miniature Bearings Australia Pty Ltd

MBA Size Listings are a guide to sizes only and must not be solely relied on for critical design information.

Page 1 of 13

INFORMATION

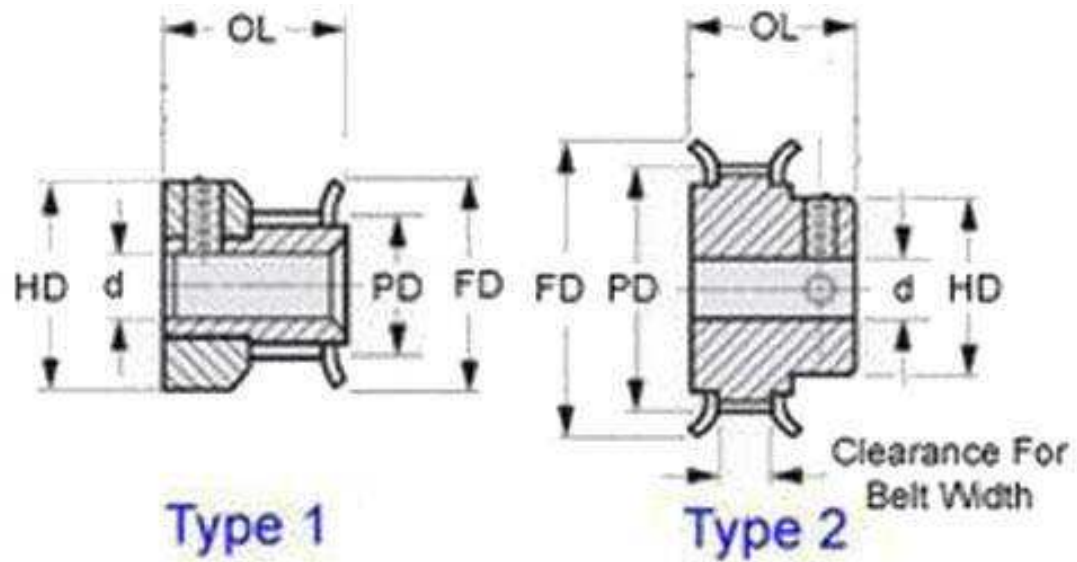
Timing Pulleys to suit XL Series 5.080mm Pitch Timing Belts. Suits belts 6.0 to 6.4mm wide.

This catalogue to be read in conjunction with information at
<http://www.minibearings.com.au//partslist/beltstiming5080mmpitchxl6mmwide/beltstiming5080mmpitchxl6mmwide/A/1/>
<http://www.minibearings.com.au//partslist/beltstiming5080mmpitchxldoublesided6mmwide/beltstiming5080mmpitchxldoublesided6mmwide/A/1/>
<http://www.minibearings.com.au//www.smallparts.com.au/store/categories/easy+kits/>

Indicates item not stocked at time of printing - Please enquire for lead time

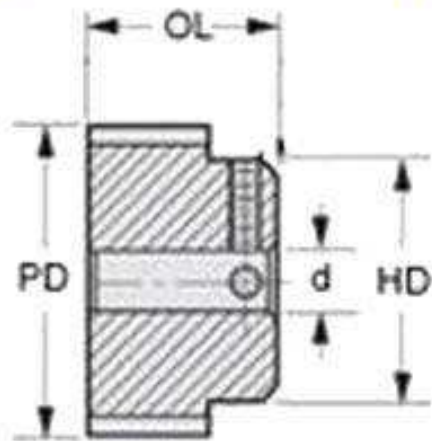
E&OE Pricing and all details subject to change without notice - Copyright Miniature Bearings Australia Pty Ltd

MBA Size Listings are a guide to sizes only and must not be solely relied on for critical design information.



Type 1

Type 2



Type 3

Indicates item not stocked at time of printing - Please enquire for lead time

E&OE Pricing and all details subject to change without notice - Copyright Miniature Bearings Australia Pty Ltd

MBA Size Listings are a guide to sizes only and must not be solely relied on for critical design information.

Pulleys - Timing - 5.080mm Pitch - XL - 6.4mm Wide - Aluminium

Part Number	Teeth	Max Belt Width mm	Bore (d) mm	Material	Locking Type	Type (See Diagram)	Pitch Diameter (PD) mm	Flange Diameter (FD) mm	Overall Length (OL) mm	Hub Diameter (HD) mm
		<i>inches</i>	<i>inches</i>				<i>inches</i>	<i>inches</i>	<i>inches</i>	<i>inches</i>
P-XL-010-064FF-AL-G-064	10	6.4	6.35	Aluminium Alloy - Clear Anodised	Set Screw	Double Flanged	16.16	22.2	17.46	9.53
		<i>0.252</i>	<i>0.250</i>				<i>0.636</i>	<i>0.874</i>	<i>0.687</i>	<i>0.375</i>
# P-XL-010-064FF-AL-G-048	10	6.4	4.763	Aluminium Alloy - Clear Anodised	Set Screw	2	16.16	22.2	17.46	9.53
		<i>0.252</i>	<i>0.188</i>				<i>0.636</i>	<i>0.874</i>	<i>0.687</i>	<i>0.375</i>
# P-XL-010-060FF-AL-G-060	10	6.4	6.000	Aluminium Alloy - Clear Anodised	Set Screw	2	16.16	22.0	17.50	9.53
		<i>0.252</i>	<i>0.236</i>				<i>0.636</i>	<i>0.866</i>	<i>0.689</i>	<i>0.375</i>
# P-XL-011-064FF-AL-G-048	11	6.4	4.763	Aluminium Alloy - Clear Anodised	Set Screw	2	17.78	23.8	17.46	11.11
		<i>0.252</i>	<i>0.188</i>				<i>0.700</i>	<i>0.937</i>	<i>0.687</i>	<i>0.437</i>
# P-XL-011-060FF-AL-G-060	11	6.4	6.000	Aluminium Alloy - Clear Anodised	Set Screw	2	17.78	24.0	17.50	11.00
		<i>0.252</i>	<i>0.236</i>				<i>0.700</i>	<i>0.945</i>	<i>0.689</i>	<i>0.433</i>
# P-XL-011-064FF-AL-G-064	11	6.4	6.350	Aluminium Alloy - Clear Anodised	Set Screw	2	17.78	23.8	17.46	11.11
		<i>0.252</i>	<i>0.250</i>				<i>0.700</i>	<i>0.937</i>	<i>0.687</i>	<i>0.437</i>
# P-XL-012-064FF-AL-G-079	12	6.4	7.938	Aluminium Alloy - Clear Anodised	Set Screw	Double Flanged	19.4	25.4	17.46	12.70
		<i>0.252</i>	<i>0.313</i>				<i>0.764</i>	<i>1.000</i>	<i>0.687</i>	<i>0.500</i>

Indicates item not stocked at time of printing - Please enquire for lead time

Page 4 of 13

E&OE Pricing and all details subject to change without notice - Copyright Miniature Bearings Australia Pty Ltd
MBA Size Listings are a guide to sizes only and must not be solely relied on for critical design information.

Pulleys - Timing - 5.080mm Pitch - XL - 6.4mm Wide - Aluminium

Part Number	Teeth	Max Belt Width mm	Bore (d) mm	Material	Locking Type	Type (See Diagram)	Pitch Diameter (PD) mm	Flange Diameter (FD) mm	Overall Length (OL) mm	Hub Diameter (HD) mm
		<i>inches</i>	<i>inches</i>				<i>inches</i>	<i>inches</i>	<i>inches</i>	<i>inches</i>
# P-XL-012-064FF-AL-G-048	12	6.4	4.763	Aluminium Alloy - Clear Anodised	Set Screw	2	19.40	25.4	17.46	12.70
		<i>0.252</i>	<i>0.188</i>				<i>0.764</i>	<i>1.000</i>	<i>0.687</i>	<i>0.500</i>
# P-XL-012-060FF-AL-G-060	12	6.4	6.000	Aluminium Alloy - Clear Anodised	Set Screw	2	19.40	25.4	17.46	12.70
		<i>0.252</i>	<i>0.236</i>				<i>0.764</i>	<i>1.000</i>	<i>0.687</i>	<i>0.500</i>
P-XL-012-064FF-AL-G-064	12	6.4	6.350	Aluminium Alloy - Clear Anodised	Set Screw	2	19.40	25.4	17.46	12.70
		<i>0.252</i>	<i>0.250</i>				<i>0.764</i>	<i>1.000</i>	<i>0.687</i>	<i>0.500</i>
# P-XL-013-064FF-AL-G-079	13	6.4	7.938	Aluminium Alloy - Clear Anodised	Set Screw	Double Flanged	21.01	27.0	17.46	14.29
		<i>0.252</i>	<i>0.313</i>				<i>0.827</i>	<i>1.063</i>	<i>0.687</i>	<i>0.563</i>
# P-XL-013-064FF-AL-G-064	13	6.4	6.350	Aluminium Alloy - Clear Anodised	Set Screw	2	21.01	27.0	17.46	14.29
		<i>0.252</i>	<i>0.250</i>				<i>0.827</i>	<i>1.063</i>	<i>0.687</i>	<i>0.563</i>
# P-XL-013-095P-AL-G-064	13	9.6	6.35	Aluminium Alloy - Clear Anodised	Set Screw	Double Flanged	21.01	27.0	17.46	14.29
		<i>0.378</i>	<i>0.250</i>				<i>0.827</i>	<i>1.063</i>	<i>0.687</i>	<i>0.563</i>
# P-XL-014-064FF-AL-G-095	14	6.4	9.525	Aluminium Alloy - Clear Anodised	Set Screw	Double Flanged	22.63	27.8	17.46	14.29
		<i>0.252</i>	<i>0.375</i>				<i>0.891</i>	<i>1.094</i>	<i>0.687</i>	<i>0.563</i>

Indicates item not stocked at time of printing - Please enquire for lead time

Page 5 of 13

E&OE Pricing and all details subject to change without notice - Copyright Miniature Bearings Australia Pty Ltd
MBA Size Listings are a guide to sizes only and must not be solely relied on for critical design information.

Pulleys - Timing - 5.080mm Pitch - XL - 6.4mm Wide - Aluminium

Part Number	Teeth	Max Belt Width mm	Bore (d) mm	Material	Locking Type	Type (See Diagram)	Pitch Diameter (PD) mm	Flange Diameter (FD) mm	Overall Length (OL) mm	Hub Diameter (HD) mm
		<i>inches</i>	<i>inches</i>				<i>inches</i>	<i>inches</i>	<i>inches</i>	<i>inches</i>
# P-XL-014-064FF-AL-G-064	14	6.4	6.350	Aluminium Alloy - Clear Anodised	Set Screw	2	22.63	27.8	17.46	14.29
		<i>0.252</i>	<i>0.250</i>				<i>0.891</i>	<i>1.094</i>	<i>0.687</i>	<i>0.563</i>
# P-XL-014-064FF-AL-G-079	14	6.4	7.938	Aluminium Alloy - Clear Anodised	Set Screw	2	22.63	27.8	17.46	14.29
		<i>0.252</i>	<i>0.313</i>				<i>0.891</i>	<i>1.094</i>	<i>0.687</i>	<i>0.563</i>
# P-XL-014-060FF-AL-G-080	14	6.4	8.000	Aluminium Alloy - Clear Anodised	Set Screw	2	22.63	28.0	17.50	14.00
		<i>0.252</i>	<i>0.315</i>				<i>0.891</i>	<i>1.102</i>	<i>0.689</i>	<i>0.551</i>
P-XL-015-064FF-AL-G-095	15	6.4	9.525	Aluminium Alloy - Clear Anodised	Set Screw	Double Flanged	24.24	30.2	17.46	15.88
		<i>0.252</i>	<i>0.375</i>				<i>0.954</i>	<i>1.189</i>	<i>0.687</i>	<i>0.625</i>
# P-XL-015-064FF-AL-G-127	15	6.4	12.7	Aluminium Alloy - Clear Anodised	Set Screw	Double Flanged	24.24	30.2	17.46	15.88
		<i>0.252</i>	<i>0.500</i>				<i>0.954</i>	<i>1.189</i>	<i>0.687</i>	<i>0.625</i>
# P-XL-015-064FF-AL-G-064	15	6.4	6.350	Aluminium Alloy - Clear Anodised	Set Screw	2	24.25	30.2	17.46	15.88
		<i>0.252</i>	<i>0.250</i>				<i>0.955</i>	<i>1.189</i>	<i>0.687</i>	<i>0.625</i>
# P-XL-015-064FF-AL-G-079	15	6.4	7.938	Aluminium Alloy - Clear Anodised	Set Screw	2	24.25	30.2	17.46	15.88
		<i>0.252</i>	<i>0.313</i>				<i>0.955</i>	<i>1.189</i>	<i>0.687</i>	<i>0.625</i>

Indicates item not stocked at time of printing - Please enquire for lead time

Page 6 of 13

E&OE Pricing and all details subject to change without notice - Copyright Miniature Bearings Australia Pty Ltd
MBA Size Listings are a guide to sizes only and must not be solely relied on for critical design information.

Pulleys - Timing - 5.080mm Pitch - XL - 6.4mm Wide - Aluminium

Part Number	Teeth	Max Belt Width mm	Bore (d) mm	Material	Locking Type	Type (See Diagram)	Pitch Diameter (PD) mm	Flange Diameter (FD) mm	Overall Length (OL) mm	Hub Diameter (HD) mm
		<i>inches</i>	<i>inches</i>				<i>inches</i>	<i>inches</i>	<i>inches</i>	<i>inches</i>
P-XL-015-060FF-AL-G-080	15	6.4	8.000	Aluminium Alloy - Clear Anodised	Set Screw	2	24.25	30.0	17.50	16.00
		<i>0.252</i>	<i>0.315</i>				<i>0.955</i>	<i>1.181</i>	<i>0.689</i>	<i>0.630</i>
# P-XL-016-064FF-AL-G-095	16	6.4	9.525	Aluminium Alloy - Clear Anodised	Set Screw	Double Flanged	25.86	31.8	17.46	17.46
		<i>0.252</i>	<i>0.375</i>				<i>1.018</i>	<i>1.252</i>	<i>0.687</i>	<i>0.687</i>
# P-XL-016-064FF-AL-G-127	16	6.4	12.7	Aluminium Alloy - Clear Anodised	Set Screw	Double Flanged	25.86	31.8	17.46	17.46
		<i>0.252</i>	<i>0.500</i>				<i>1.018</i>	<i>1.252</i>	<i>0.687</i>	<i>0.687</i>
# P-XL-016-064FF-AL-G-064	16	6.4	6.350	Aluminium Alloy - Clear Anodised	Set Screw	2	25.86	31.8	17.46	17.46
		<i>0.252</i>	<i>0.250</i>				<i>1.018</i>	<i>1.252</i>	<i>0.687</i>	<i>0.687</i>
# P-XL-016-064FF-AL-G-079	16	6.4	7.938	Aluminium Alloy - Clear Anodised	Set Screw	2	25.86	31.8	17.46	17.46
		<i>0.252</i>	<i>0.313</i>				<i>1.018</i>	<i>1.252</i>	<i>0.687</i>	<i>0.687</i>
# P-XL-016-060FF-AL-G-080	16	6.4	8.000	Aluminium Alloy - Clear Anodised	Set Screw	2	25.86	32.0	17.50	17.00
		<i>0.252</i>	<i>0.315</i>				<i>1.018</i>	<i>1.260</i>	<i>0.689</i>	<i>0.669</i>
# P-XL-018-064FF-AL-G-095	18	6.4	9.525	Aluminium Alloy - Clear Anodised	Set Screw	Double Flanged	29.09	34.9	17.46	20.64
		<i>0.252</i>	<i>0.375</i>				<i>1.145</i>	<i>1.374</i>	<i>0.687</i>	<i>0.813</i>

Indicates item not stocked at time of printing - Please enquire for lead time

Page 7 of 13

E&OE Pricing and all details subject to change without notice - Copyright Miniature Bearings Australia Pty Ltd
MBA Size Listings are a guide to sizes only and must not be solely relied on for critical design information.

Pulleys - Timing - 5.080mm Pitch - XL - 6.4mm Wide - Aluminium

Part Number	Teeth	Max Belt Width mm	Bore (d) mm	Material	Locking Type	Type (See Diagram)	Pitch Diameter (PD) mm	Flange Diameter (FD) mm	Overall Length (OL) mm	Hub Diameter (HD) mm
		<i>inches</i>	<i>inches</i>				<i>inches</i>	<i>inches</i>	<i>inches</i>	<i>inches</i>
# P-XL-018-064FF-AL-G-127	18	6.4	12.7	Aluminium Alloy - Clear Anodised	Set Screw	Double Flanged	29.09	34.9	17.46	20.64
		<i>0.252</i>	<i>0.500</i>				<i>1.145</i>	<i>1.374</i>	<i>0.687</i>	<i>0.813</i>
# P-XL-018-064FF-AL-G-064	18	6.4	6.350	Aluminium Alloy - Clear Anodised	Set Screw	2	29.09	34.9	17.46	20.64
		<i>0.252</i>	<i>0.250</i>				<i>1.145</i>	<i>1.374</i>	<i>0.687</i>	<i>0.813</i>
# P-XL-018-064FF-AL-G-079	18	6.4	7.938	Aluminium Alloy - Clear Anodised	Set Screw	2	29.09	34.9	17.46	20.64
		<i>0.252</i>	<i>0.313</i>				<i>1.145</i>	<i>1.374</i>	<i>0.687</i>	<i>0.813</i>
# P-XL-018-060FF-AL-G-080	18	6.4	8.000	Aluminium Alloy - Clear Anodised	Set Screw	2	29.09	35.0	17.50	21.00
		<i>0.252</i>	<i>0.315</i>				<i>1.145</i>	<i>1.378</i>	<i>0.689</i>	<i>0.827</i>
# P-XL-020-064FF-AL-G-095	20	6.4	9.525	Aluminium Alloy - Clear Anodised	Set Screw	Double Flanged	32.33	38.1	19.05	23.81
		<i>0.252</i>	<i>0.375</i>				<i>1.273</i>	<i>1.500</i>	<i>0.750</i>	<i>0.937</i>
# P-XL-020-064FF-AL-G-127	20	6.4	12.7	Aluminium Alloy - Clear Anodised	Set Screw	Double Flanged	32.33	38.1	19.05	23.81
		<i>0.252</i>	<i>0.500</i>				<i>1.273</i>	<i>1.500</i>	<i>0.750</i>	<i>0.937</i>
# P-XL-020-064FF-AL-G-064	20	6.4	6.350	Aluminium Alloy - Clear Anodised	Set Screw	2	32.33	38.1	19.05	23.81
		<i>0.252</i>	<i>0.250</i>				<i>1.273</i>	<i>1.500</i>	<i>0.750</i>	<i>0.937</i>

Indicates item not stocked at time of printing - Please enquire for lead time

Page 8 of 13

E&OE Pricing and all details subject to change without notice - Copyright Miniature Bearings Australia Pty Ltd
MBA Size Listings are a guide to sizes only and must not be solely relied on for critical design information.

Pulleys - Timing - 5.080mm Pitch - XL - 6.4mm Wide - Aluminium

Part Number	Teeth	Max Belt Width mm	Bore (d) mm	Material	Locking Type	Type (See Diagram)	Pitch Diameter (PD) mm	Flange Diameter (FD) mm	Overall Length (OL) mm	Hub Diameter (HD) mm
		<i>inches</i>	<i>inches</i>				<i>inches</i>	<i>inches</i>	<i>inches</i>	<i>inches</i>
# P-XL-020-064FF-AL-G-079	20	6.4	7.938	Aluminium Alloy - Clear Anodised	Set Screw	2	32.33	38.1	19.05	23.81
		<i>0.252</i>	<i>0.313</i>				<i>1.273</i>	<i>1.500</i>	<i>0.750</i>	<i>0.937</i>
P-XL-020-060FF-AL-G-080	20	6.4	8.000	Aluminium Alloy - Clear Anodised	Set Screw	2	32.33	38.0	19.10	24.00
		<i>0.252</i>	<i>0.315</i>				<i>1.273</i>	<i>1.496</i>	<i>0.752</i>	<i>0.945</i>
# P-XL-021-064FF-AL-G-095	21	6.4	9.525	Aluminium Alloy - Clear Anodised	Set Screw	Double Flanged	33.94	39.7	19.05	25.40
		<i>0.252</i>	<i>0.375</i>				<i>1.336</i>	<i>1.563</i>	<i>0.750</i>	<i>1.000</i>
# P-XL-021-064FF-AL-G-127	21	6.4	12.7	Aluminium Alloy - Clear Anodised	Set Screw	Double Flanged	33.94	39.7	19.05	25.40
		<i>0.252</i>	<i>0.500</i>				<i>1.336</i>	<i>1.563</i>	<i>0.750</i>	<i>1.000</i>
# P-XL-021-064FF-AL-G-064	21	6.4	6.350	Aluminium Alloy - Clear Anodised	Set Screw	2	33.94	39.7	19.05	25.40
		<i>0.252</i>	<i>0.250</i>				<i>1.336</i>	<i>1.563</i>	<i>0.750</i>	<i>1.000</i>
# P-XL-021-064FF-AL-G-079	21	6.4	7.938	Aluminium Alloy - Clear Anodised	Set Screw	2	33.94	39.7	19.05	25.40
		<i>0.252</i>	<i>0.313</i>				<i>1.336</i>	<i>1.563</i>	<i>0.750</i>	<i>1.000</i>
# P-XL-022-064FF-AL-G-079	22	6.4	7.938	Aluminium Alloy - Clear Anodised	Set Screw	Double Flanged	35.56	41.3	19.05	25.40
		<i>0.252</i>	<i>0.313</i>				<i>1.400</i>	<i>1.626</i>	<i>0.750</i>	<i>1.000</i>

Indicates item not stocked at time of printing - Please enquire for lead time

Page 9 of 13

E&OE Pricing and all details subject to change without notice - Copyright Miniature Bearings Australia Pty Ltd
MBA Size Listings are a guide to sizes only and must not be solely relied on for critical design information.

Pulleys - Timing - 5.080mm Pitch - XL - 6.4mm Wide - Aluminium

Part Number	Teeth	Max Belt Width mm	Bore (d) mm	Material	Locking Type	Type (See Diagram)	Pitch Diameter (PD) mm	Flange Diameter (FD) mm	Overall Length (OL) mm	Hub Diameter (HD) mm
		<i>inches</i>	<i>inches</i>				<i>inches</i>	<i>inches</i>	<i>inches</i>	<i>inches</i>
# P-XL-022-064FF-AL-G-127	22	6.4	12.7	Aluminium Alloy - Clear Anodised	Set Screw	Double Flanged	35.56	41.3	19.05	25.40
		<i>0.252</i>	<i>0.500</i>				<i>1.400</i>	<i>1.626</i>	<i>0.750</i>	<i>1.000</i>
# P-XL-022-064FF-AL-G-064	22	6.4	6.350	Aluminium Alloy - Clear Anodised	Set Screw	2	35.56	41.3	19.05	25.40
		<i>0.252</i>	<i>0.250</i>				<i>1.400</i>	<i>1.626</i>	<i>0.750</i>	<i>1.000</i>
# P-XL-022-060FF-AL-G-080	22	6.4	8.000	Aluminium Alloy - Clear Anodised	Set Screw	2	35.56	41.0	19.10	25.00
		<i>0.252</i>	<i>0.315</i>				<i>1.400</i>	<i>1.614</i>	<i>0.752</i>	<i>0.984</i>
# P-XL-022-064FF-AL-G-095	22	6.4	9.525	Aluminium Alloy - Clear Anodised	Set Screw	2	35.56	41.3	19.05	25.40
		<i>0.252</i>	<i>0.375</i>				<i>1.400</i>	<i>1.626</i>	<i>0.750</i>	<i>1.000</i>
# P-XL-024-064FF-AL-G-127	24	6.4	12.7	Aluminium Alloy - Clear Anodised	Set Screw	Double Flanged	38.79	44.5	19.84	26.99
		<i>0.252</i>	<i>0.500</i>				<i>1.527</i>	<i>1.752</i>	<i>0.781</i>	<i>1.063</i>
# P-XL-024-064FF-AL-G-064	24	6.4	6.350	Aluminium Alloy - Clear Anodised	Set Screw	2	38.79	44.5	19.84	26.99
		<i>0.252</i>	<i>0.250</i>				<i>1.527</i>	<i>1.752</i>	<i>0.781</i>	<i>1.063</i>
# P-XL-024-064FF-AL-G-079	24	6.4	7.938	Aluminium Alloy - Clear Anodised	Set Screw	2	38.79	44.5	19.84	26.99
		<i>0.252</i>	<i>0.313</i>				<i>1.527</i>	<i>1.752</i>	<i>0.781</i>	<i>1.063</i>

Indicates item not stocked at time of printing - Please enquire for lead time

Page 10 of 13

E&OE Pricing and all details subject to change without notice - Copyright Miniature Bearings Australia Pty Ltd
MBA Size Listings are a guide to sizes only and must not be solely relied on for critical design information.

Pulleys - Timing - 5.080mm Pitch - XL - 6.4mm Wide - Aluminium

Part Number	Teeth	Max Belt Width mm	Bore (d) mm	Material	Locking Type	Type (See Diagram)	Pitch Diameter (PD) mm	Flange Diameter (FD) mm	Overall Length (OL) mm	Hub Diameter (HD) mm
# P-XL-024-060FF-AL-G-080	24	6.4	8.000	Aluminium Alloy - Clear Anodised	Set Screw	2	38.79	44.0	19.80	27.00
		<i>0.252</i>	<i>0.315</i>				<i>1.527</i>	<i>1.732</i>	<i>0.780</i>	<i>1.063</i>
P-XL-024-064FF-AL-G-095	24	6.4	9.525	Aluminium Alloy - Clear Anodised	Set Screw	2	38.79	44.5	19.84	26.99
		<i>0.252</i>	<i>0.375</i>				<i>1.527</i>	<i>1.752</i>	<i>0.781</i>	<i>1.063</i>
# P-XL-026-064FF-AL-G-079	26	6.4	7.938	Aluminium Alloy - Clear Anodised	Set Screw	Double Flanged	42.02	47.6	19.84	30.16
		<i>0.252</i>	<i>0.313</i>				<i>1.654</i>	<i>1.874</i>	<i>0.781</i>	<i>1.187</i>
# P-XL-026-064FF-AL-G-127	26	6.4	12.7	Aluminium Alloy - Clear Anodised	Set Screw	Double Flanged	42.02	47.6	19.84	30.16
		<i>0.252</i>	<i>0.500</i>				<i>1.654</i>	<i>1.874</i>	<i>0.781</i>	<i>1.187</i>
# P-XL-026-064FF-AL-G-064	26	6.4	6.350	Aluminium Alloy - Clear Anodised	Set Screw	2	42.03	47.6	19.84	30.16
		<i>0.252</i>	<i>0.250</i>				<i>1.655</i>	<i>1.874</i>	<i>0.781</i>	<i>1.187</i>
# P-XL-026-064FF-AL-G-095	26	6.4	9.525	Aluminium Alloy - Clear Anodised	Set Screw	2	42.03	47.6	19.84	30.16
		<i>0.252</i>	<i>0.375</i>				<i>1.655</i>	<i>1.874</i>	<i>0.781</i>	<i>1.187</i>
# P-XL-026-095P-AL-G-064	26	9.6	6.35	Aluminium Alloy - Clear Anodised	Set Screw	Unflanged	42.02	47.6	19.84	30.16
		<i>0.378</i>	<i>0.250</i>				<i>1.654</i>	<i>1.874</i>	<i>0.781</i>	<i>1.187</i>

Indicates item not stocked at time of printing - Please enquire for lead time

Page 11 of 13

E&OE Pricing and all details subject to change without notice - Copyright Miniature Bearings Australia Pty Ltd
MBA Size Listings are a guide to sizes only and must not be solely relied on for critical design information.

Pulleys - Timing - 5.080mm Pitch - XL - 6.4mm Wide - Aluminium

Part Number	Teeth	Max Belt Width mm	Bore (d) mm	Material	Locking Type	Type (See Diagram)	Pitch Diameter (PD) mm	Flange Diameter (FD) mm	Overall Length (OL) mm	Hub Diameter (HD) mm
		<i>inches</i>	<i>inches</i>				<i>inches</i>	<i>inches</i>	<i>inches</i>	<i>inches</i>
# P-XL-028-064FF-AL-G-079	28	6.4	7.938	Aluminium Alloy - Clear Anodised	Set Screw	Double Flanged	45.26	50.8	19.84	30.16
		<i>0.252</i>	<i>0.313</i>				<i>1.782</i>	<i>2.000</i>	<i>0.781</i>	<i>1.187</i>
# P-XL-028-064FF-AL-G-127	28	6.4	12.7	Aluminium Alloy - Clear Anodised	Set Screw	Double Flanged	45.26	50.8	19.84	30.16
		<i>0.252</i>	<i>0.500</i>				<i>1.782</i>	<i>2.000</i>	<i>0.781</i>	<i>1.187</i>
# P-XL-028-064FF-AL-G-159	28	6.4	15.875	Aluminium Alloy - Clear Anodised	Set Screw	Double Flanged	45.26	50.8	19.84	30.16
		<i>0.252</i>	<i>0.625</i>				<i>1.782</i>	<i>2.000</i>	<i>0.781</i>	<i>1.187</i>
# P-XL-028-064FF-AL-G-064	28	6.4	6.350	Aluminium Alloy - Clear Anodised	Set Screw	2	45.26	50.8	19.84	30.16
		<i>0.252</i>	<i>0.250</i>				<i>1.782</i>	<i>2.000</i>	<i>0.781</i>	<i>1.187</i>
# P-XL-028-060FF-AL-G-080	28	6.4	8.000	Aluminium Alloy - Clear Anodised	Set Screw	2	45.26	50.8	19.84	30.16
		<i>0.252</i>	<i>0.315</i>				<i>1.782</i>	<i>2.000</i>	<i>0.781</i>	<i>1.187</i>
# P-XL-028-064FF-AL-G-095	28	6.4	9.525	Aluminium Alloy - Clear Anodised	Set Screw	2	45.26	50.8	19.84	30.16
		<i>0.252</i>	<i>0.375</i>				<i>1.782</i>	<i>2.000</i>	<i>0.781</i>	<i>1.187</i>
# P-XL-030-064FF-AL-G-079	30	6.4	7.938	Aluminium Alloy - Clear Anodised	Set Screw	Double Flanged	48.49	54.0	19.84	33.34
		<i>0.252</i>	<i>0.313</i>				<i>1.909</i>	<i>2.126</i>	<i>0.781</i>	<i>1.313</i>

Indicates item not stocked at time of printing - Please enquire for lead time

Page 12 of 13

E&OE Pricing and all details subject to change without notice - Copyright Miniature Bearings Australia Pty Ltd
MBA Size Listings are a guide to sizes only and must not be solely relied on for critical design information.

Pulleys - Timing - 5.080mm Pitch - XL - 6.4mm Wide - Aluminium

Part Number	Teeth	Max Belt Width mm	Bore (d) mm	Material	Locking Type	Type (See Diagram)	Pitch Diameter (PD) mm	Flange Diameter (FD) mm	Overall Length (OL) mm	Hub Diameter (HD) mm
		<i>inches</i>	<i>inches</i>				<i>inches</i>	<i>inches</i>	<i>inches</i>	<i>inches</i>
# P-XL-030-064FF-AL-G-127	30	6.4	12.7	Aluminium Alloy - Clear Anodised	Set Screw	Double Flanged	48.49	54.0	19.84	33.34
		<i>0.252</i>	<i>0.500</i>				<i>1.909</i>	<i>2.126</i>	<i>0.781</i>	<i>1.313</i>
# P-XL-030-064FF-AL-G-159	30	6.4	15.875	Aluminium Alloy - Clear Anodised	Set Screw	Double Flanged	48.49	54.0	19.84	33.34
		<i>0.252</i>	<i>0.625</i>				<i>1.909</i>	<i>2.126</i>	<i>0.781</i>	<i>1.313</i>
P-XL-030-064FF-AL-G-064	30	6.4	6.350	Aluminium Alloy - Clear Anodised	Set Screw	2	48.49	54.0	19.84	33.34
		<i>0.252</i>	<i>0.250</i>				<i>1.909</i>	<i>2.126</i>	<i>0.781</i>	<i>1.313</i>
# P-XL-030-060FF-AL-G-080	30	6.4	8.000	Aluminium Alloy - Clear Anodised	Set Screw	2	48.49	54.0	19.80	33.00
		<i>0.252</i>	<i>0.315</i>				<i>1.909</i>	<i>2.126</i>	<i>0.780</i>	<i>1.299</i>
# P-XL-030-064FF-AL-G-095	30	6.4	9.525	Aluminium Alloy - Clear Anodised	Set Screw	2	48.49	54.0	19.84	33.34
		<i>0.252</i>	<i>0.375</i>				<i>1.909</i>	<i>2.126</i>	<i>0.781</i>	<i>1.313</i>
# P-XL-032-095FF-AL-GN-064	32	9.6	6.35	Aluminium Alloy - Clear Anodised	Set Screw Between Teeth	Double Flanged	51.72	57.2	14.30	-
		<i>0.378</i>	<i>0.250</i>				<i>2.036</i>	<i>2.252</i>	<i>0.563</i>	
# P-XL-032-095FF-AL-G-064	32	9.6	6.35	Aluminium Alloy - Clear Anodised	Set Screw	Double Flanged	51.72	57.2	23.01	36.50
		<i>0.378</i>	<i>0.250</i>				<i>2.036</i>	<i>2.252</i>	<i>0.906</i>	<i>1.437</i>

Indicates item not stocked at time of printing - Please enquire for lead time

Page 13 of 13

E&OE Pricing and all details subject to change without notice - Copyright Miniature Bearings Australia Pty Ltd
MBA Size Listings are a guide to sizes only and must not be solely relied on for critical design information.

DISTRIBUTED BY

Distributed By:

