



# **Pulleys - Timing - 5.080mm Pitch - XL - 9.6mm Wide - Steel - Zinc Plated**

10/4/2018

# Indicates item not stocked at time of printing - Please enquire for lead time

E&OE Pricing and all details subject to change without notice - Copyright Miniature Bearings Australia Pty Ltd

MBA Size Listings are a guide to sizes only and must not be solely relied on for critical design information.

Page 1 of 8

## INFORMATION

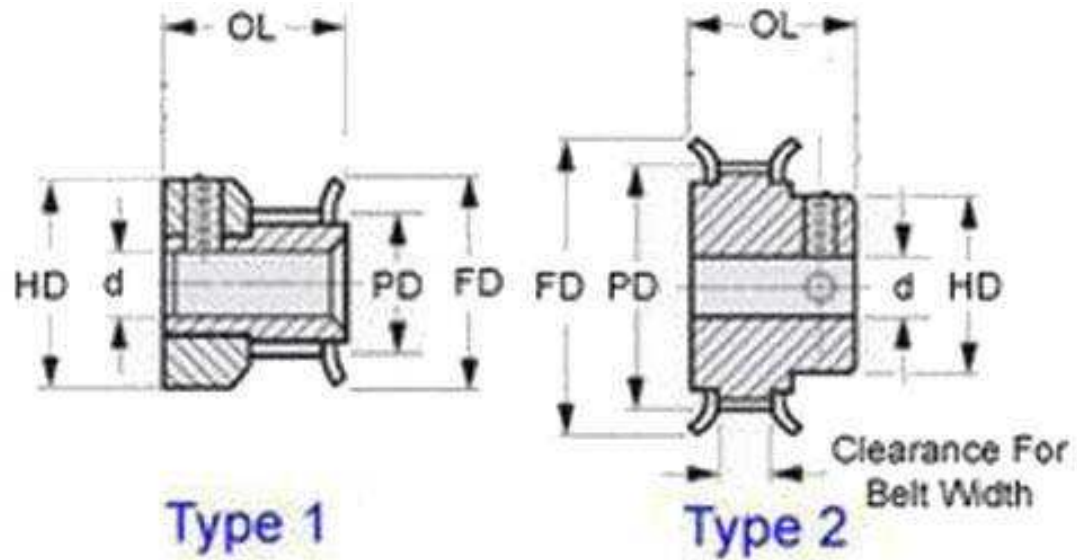
Timing Pulleys to suit XL Series 5.080mm Pitch Timing Belts.. Zinc Plated with unfinished bore.

This catalogue to be read in conjunction with information at  
<http://www.minibearings.com.au//partslist/beltstiming5080mmpitchx195mmwide/beltstiming5080mmpitchx195mmwide/A/1/>  
<http://www.minibearings.com.au//partslist/beltstiming5080mmpitchxldoublesided95mmwide/beltstiming5080mmpitchxldoublesided95mmwide/A/1/>  
<http://www.minibearings.com.au//www.smallparts.com.au/store/categories/easy+kits/>

# Indicates item not stocked at time of printing - Please enquire for lead time

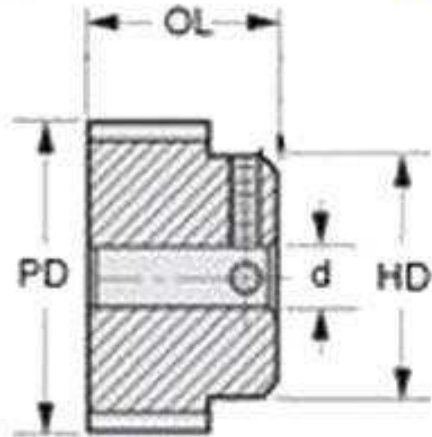
E&OE Pricing and all details subject to change without notice - Copyright Miniature Bearings Australia Pty Ltd

MBA Size Listings are a guide to sizes only and must not be solely relied on for critical design information.



Type 1

Type 2



Type 3

# Indicates item not stocked at time of printing - Please enquire for lead time

E&OE Pricing and all details subject to change without notice - Copyright Miniature Bearings Australia Pty Ltd

MBA Size Listings are a guide to sizes only and must not be solely relied on for critical design information.

## Pulleys - Timing - 5.080mm Pitch - XL - 9.6mm Wide - Steel - Zinc Plated

Part Number	Teeth	Max Belt Width mm	Bore (d) mm	Material	Locking Type	Type (See Diagram)	Pitch Diameter (PD) mm	Flange Diameter (FD) mm	Overall Length (OL) mm	Hub Diameter (HD) mm
		<i>inches</i>	<i>inches</i>				<i>inches</i>	<i>inches</i>	<i>inches</i>	<i>inches</i>
# P-XL-010-095FF-CZ-N-048	10	9.6	4.762	Zinc Plated Steel	None	Double Flanged	16.16	22.23	20.62	11.10
		<i>0.378</i>	<i>0.187</i>				<i>0.636</i>	<i>0.875</i>	<i>0.812</i>	<i>0.437</i>
# P-XL-010-095FF-CZ-N-064	10	9.6	6.35	Zinc Plated Steel	None	Double Flanged	16.16	22.23	20.62	11.10
		<i>0.378</i>	<i>0.250</i>				<i>0.636</i>	<i>0.875</i>	<i>0.812</i>	<i>0.437</i>
# P-XL-011-095FF-CZ-N-048	11	9.6	4.762	Zinc Plated Steel	None	Double Flanged	17.78	23.80	20.62	12.70
		<i>0.378</i>	<i>0.187</i>				<i>0.700</i>	<i>0.937</i>	<i>0.812</i>	<i>0.500</i>
# P-XL-011-095FF-CZ-N-064	11	9.6	6.35	Zinc Plated Steel	None	Double Flanged	17.78	23.80	20.62	12.70
		<i>0.378</i>	<i>0.250</i>				<i>0.700</i>	<i>0.937</i>	<i>0.812</i>	<i>0.500</i>
# P-XL-012-095FF-CZ-N-048	12	9.6	4.762	Zinc Plated Steel	None	Double Flanged	19.40	25.40	20.62	12.70
		<i>0.378</i>	<i>0.187</i>				<i>0.764</i>	<i>1.000</i>	<i>0.812</i>	<i>0.500</i>
# P-XL-012-095FF-CZ-N-064	12	9.6	6.35	Zinc Plated Steel	None	Double Flanged	19.40	25.40	20.62	12.70
		<i>0.378</i>	<i>0.250</i>				<i>0.764</i>	<i>1.000</i>	<i>0.812</i>	<i>0.500</i>
# P-XL-012-095FF-CZ-N-079	12	9.6	7.938	Zinc Plated Steel	None	Double Flanged	19.40	25.40	20.62	12.70
		<i>0.378</i>	<i>0.313</i>				<i>0.764</i>	<i>1.000</i>	<i>0.812</i>	<i>0.500</i>
# P-XL-014-095FF-CZ-N-064	14	9.6	6.35	Zinc Plated Steel	None	Double Flanged	22.63	27.79	20.62	14.30
		<i>0.378</i>	<i>0.250</i>				<i>0.891</i>	<i>1.094</i>	<i>0.812</i>	<i>0.563</i>

# Indicates item not stocked at time of printing - Please enquire for lead time

Page 4 of 8

E&OE Pricing and all details subject to change without notice - Copyright Miniature Bearings Australia Pty Ltd  
MBA Size Listings are a guide to sizes only and must not be solely relied on for critical design information.

## Pulleys - Timing - 5.080mm Pitch - XL - 9.6mm Wide - Steel - Zinc Plated

Part Number	Teeth	Max Belt Width mm	Bore (d) mm	Material	Locking Type	Type (See Diagram)	Pitch Diameter (PD) mm	Flange Diameter (FD) mm	Overall Length (OL) mm	Hub Diameter (HD) mm
		<i>inches</i>	<i>inches</i>				<i>inches</i>	<i>inches</i>	<i>inches</i>	<i>inches</i>
# P-XL-014-095FF-CZ-N-079	14	9.6	7.938	Zinc Plated Steel	None	Double Flanged	22.63	27.79	20.62	14.30
		<i>0.378</i>	<i>0.313</i>				<i>0.891</i>	<i>1.094</i>	<i>0.812</i>	<i>0.563</i>
# P-XL-015-095FF-CZ-N-064	15	9.6	6.35	Zinc Plated Steel	None	Double Flanged	24.24	30.18	20.62	19.05
		<i>0.378</i>	<i>0.250</i>				<i>0.954</i>	<i>1.188</i>	<i>0.812</i>	<i>0.750</i>
# P-XL-015-095FF-CZ-N-079	15	9.6	7.938	Zinc Plated Steel	None	Double Flanged	24.24	30.18	20.62	19.05
		<i>0.378</i>	<i>0.313</i>				<i>0.954</i>	<i>1.188</i>	<i>0.812</i>	<i>0.750</i>
# P-XL-015-095FF-CZ-N-095	15	9.6	9.525	Zinc Plated Steel	None	Double Flanged	24.24	30.18	20.62	19.05
		<i>0.378</i>	<i>0.375</i>				<i>0.954</i>	<i>1.188</i>	<i>0.812</i>	<i>0.750</i>
# P-XL-015-095FF-CZ-N-127	15	9.6	12.7	Zinc Plated Steel	None	Double Flanged	24.24	30.18	20.62	19.05
		<i>0.378</i>	<i>0.500</i>				<i>0.954</i>	<i>1.188</i>	<i>0.812</i>	<i>0.750</i>
# P-XL-016-095FF-CZ-N-064	16	9.6	6.35	Zinc Plated Steel	None	Double Flanged	25.86	31.75	20.62	17.48
		<i>0.378</i>	<i>0.250</i>				<i>1.018</i>	<i>1.250</i>	<i>0.812</i>	<i>0.688</i>
# P-XL-016-095FF-CZ-N-079	16	9.6	7.938	Zinc Plated Steel	None	Double Flanged	25.86	31.75	20.62	17.48
		<i>0.378</i>	<i>0.313</i>				<i>1.018</i>	<i>1.250</i>	<i>0.812</i>	<i>0.688</i>
# P-XL-016-095FF-CZ-N-095	16	9.6	9.525	Zinc Plated Steel	None	Double Flanged	25.86	31.75	20.62	17.48
		<i>0.378</i>	<i>0.375</i>				<i>1.018</i>	<i>1.250</i>	<i>0.812</i>	<i>0.688</i>

# Indicates item not stocked at time of printing - Please enquire for lead time

Page 5 of 8

E&OE Pricing and all details subject to change without notice - Copyright Miniature Bearings Australia Pty Ltd  
MBA Size Listings are a guide to sizes only and must not be solely relied on for critical design information.

## Pulleys - Timing - 5.080mm Pitch - XL - 9.6mm Wide - Steel - Zinc Plated

Part Number	Teeth	Max Belt Width mm	Bore (d) mm	Material	Locking Type	Type (See Diagram)	Pitch Diameter (PD) mm	Flange Diameter (FD) mm	Overall Length (OL) mm	Hub Diameter (HD) mm
		<i>inches</i>	<i>inches</i>				<i>inches</i>	<i>inches</i>	<i>inches</i>	<i>inches</i>
# P-XL-018-095FF-CZ-N-064	18	9.6 <i>0.378</i>	6.35 <i>0.250</i>	Zinc Plated Steel	None	Double Flanged	29.09 <i>1.145</i>	34.93 <i>1.375</i>	20.62 <i>0.812</i>	20.62 <i>0.812</i>
# P-XL-018-095FF-CZ-N-079	18	9.6 <i>0.378</i>	7.938 <i>0.313</i>	Zinc Plated Steel	None	Double Flanged	29.09 <i>1.145</i>	34.93 <i>1.375</i>	20.62 <i>0.812</i>	20.62 <i>0.812</i>
# P-XL-018-095FF-CZ-N-095	18	9.6 <i>0.378</i>	9.525 <i>0.375</i>	Zinc Plated Steel	None	Double Flanged	29.09 <i>1.145</i>	34.93 <i>1.375</i>	20.62 <i>0.812</i>	20.62 <i>0.812</i>
# P-XL-018-095FF-CZ-N-127	18	9.6 <i>0.378</i>	12.7 <i>0.500</i>	Zinc Plated Steel	None	Double Flanged	29.09 <i>1.145</i>	34.93 <i>1.375</i>	20.62 <i>0.812</i>	20.62 <i>0.812</i>
# P-XL-020-095FF-CZ-N-064	20	9.6 <i>0.378</i>	6.35 <i>0.250</i>	Zinc Plated Steel	None	Double Flanged	32.33 <i>1.273</i>	38.10 <i>1.500</i>	22.23 <i>0.875</i>	23.80 <i>0.937</i>
# P-XL-020-095FF-CZ-N-079	20	9.6 <i>0.378</i>	7.938 <i>0.313</i>	Zinc Plated Steel	None	Double Flanged	32.33 <i>1.273</i>	38.10 <i>1.500</i>	22.23 <i>0.875</i>	23.80 <i>0.937</i>
# P-XL-020-095FF-CZ-N-095	20	9.6 <i>0.378</i>	9.525 <i>0.375</i>	Zinc Plated Steel	None	Double Flanged	32.33 <i>1.273</i>	38.10 <i>1.500</i>	22.23 <i>0.875</i>	23.80 <i>0.937</i>
# P-XL-020-095FF-CZ-N-127	20	9.6 <i>0.378</i>	12.7 <i>0.500</i>	Zinc Plated Steel	None	Double Flanged	32.33 <i>1.273</i>	38.10 <i>1.500</i>	22.23 <i>0.875</i>	23.80 <i>0.937</i>

# Indicates item not stocked at time of printing - Please enquire for lead time

Page 6 of 8

E&OE Pricing and all details subject to change without notice - Copyright Miniature Bearings Australia Pty Ltd  
MBA Size Listings are a guide to sizes only and must not be solely relied on for critical design information.

## Pulleys - Timing - 5.080mm Pitch - XL - 9.6mm Wide - Steel - Zinc Plated

Part Number	Teeth	Max Belt Width mm	Bore (d) mm	Material	Locking Type	Type (See Diagram)	Pitch Diameter (PD) mm	Flange Diameter (FD) mm	Overall Length (OL) mm	Hub Diameter (HD) mm
		<i>inches</i>	<i>inches</i>				<i>inches</i>	<i>inches</i>	<i>inches</i>	<i>inches</i>
# P-XL-021-095FF-CZ-N-064	21	9.6	6.35	Zinc Plated Steel	None	Double Flanged	33.94	39.70	22.23	25.40
		<i>0.378</i>	<i>0.250</i>				<i>1.336</i>	<i>1.563</i>	<i>0.875</i>	<i>1.000</i>
# P-XL-022-095FF-CZ-N-064	22	9.6	6.35	Zinc Plated Steel	None	Double Flanged	35.56	41.28	22.23	25.40
		<i>0.378</i>	<i>0.250</i>				<i>1.400</i>	<i>1.625</i>	<i>0.875</i>	<i>1.000</i>
# P-XL-022-095FF-CZ-N-079	22	9.6	7.938	Zinc Plated Steel	None	Double Flanged	35.56	41.28	22.23	25.40
		<i>0.378</i>	<i>0.313</i>				<i>1.400</i>	<i>1.625</i>	<i>0.875</i>	<i>1.000</i>
# P-XL-022-095FF-CZ-N-095	22	9.6	9.525	Zinc Plated Steel	None	Double Flanged	35.56	41.28	22.23	25.40
		<i>0.378</i>	<i>0.375</i>				<i>1.400</i>	<i>1.625</i>	<i>0.875</i>	<i>1.000</i>
# P-XL-022-095FF-CZ-N-127	22	9.6	12.7	Zinc Plated Steel	None	Double Flanged	35.56	41.28	22.23	25.40
		<i>0.378</i>	<i>0.500</i>				<i>1.400</i>	<i>1.625</i>	<i>0.875</i>	<i>1.000</i>
# P-XL-024-095FF-CZ-N-064	24	9.6	6.35	Zinc Plated Steel	None	Double Flanged	38.79	44.45	23.01	27.00
		<i>0.378</i>	<i>0.250</i>				<i>1.527</i>	<i>1.750</i>	<i>0.906</i>	<i>1.063</i>
# P-XL-024-095FF-CZ-N-079	24	9.6	7.938	Zinc Plated Steel	None	Double Flanged	38.79	44.45	23.01	27.00
		<i>0.378</i>	<i>0.313</i>				<i>1.527</i>	<i>1.750</i>	<i>0.906</i>	<i>1.063</i>
# P-XL-024-095FF-CZ-N-095	24	9.6	9.525	Zinc Plated Steel	None	Double Flanged	38.79	44.45	23.01	27.00
		<i>0.378</i>	<i>0.375</i>				<i>1.527</i>	<i>1.750</i>	<i>0.906</i>	<i>1.063</i>

# Indicates item not stocked at time of printing - Please enquire for lead time

Page 7 of 8

E&OE Pricing and all details subject to change without notice - Copyright Miniature Bearings Australia Pty Ltd  
MBA Size Listings are a guide to sizes only and must not be solely relied on for critical design information.

## Pulleys - Timing - 5.080mm Pitch - XL - 9.6mm Wide - Steel - Zinc Plated

Part Number	Teeth	Max Belt Width mm	Bore (d) mm	Material	Locking Type	Type (See Diagram)	Pitch Diameter (PD) mm	Flange Diameter (FD) mm	Overall Length (OL) mm	Hub Diameter (HD) mm
		<i>inches</i>	<i>inches</i>				<i>inches</i>	<i>inches</i>	<i>inches</i>	<i>inches</i>
# P-XL-024-095FF-CZ-N-127	24	9.6	12.7	Zinc Plated Steel	None	Double Flanged	38.79	44.45	23.01	27.00
		<i>0.378</i>	<i>0.500</i>				<i>1.527</i>	<i>1.750</i>	<i>0.906</i>	<i>1.063</i>
# P-XL-028-095FF-CZ-N-064	28	9.6	6.35	Zinc Plated Steel	None	Double Flanged	45.26	50.80	23.01	30.18
		<i>0.378</i>	<i>0.250</i>				<i>1.782</i>	<i>2.000</i>	<i>0.906</i>	<i>1.188</i>
# P-XL-028-095FF-CZ-N-079	28	9.6	7.938	Zinc Plated Steel	None	Double Flanged	45.26	50.80	23.01	30.18
		<i>0.378</i>	<i>0.313</i>				<i>1.782</i>	<i>2.000</i>	<i>0.906</i>	<i>1.188</i>
# P-XL-028-095FF-CZ-N-095	28	9.6	9.525	Zinc Plated Steel	None	Double Flanged	45.26	50.80	23.01	30.18
		<i>0.378</i>	<i>0.375</i>				<i>1.782</i>	<i>2.000</i>	<i>0.906</i>	<i>1.188</i>
# P-XL-028-095FF-CZ-N-127	28	9.6	12.7	Zinc Plated Steel	None	Double Flanged	45.26	50.80	23.01	30.18
		<i>0.378</i>	<i>0.500</i>				<i>1.782</i>	<i>2.000</i>	<i>0.906</i>	<i>1.188</i>
# P-XL-030-095FF-CZ-N-079	30	9.6	7.938	Zinc Plated Steel	None	Double Flanged	48.49	53.98	23.01	33.32
		<i>0.378</i>	<i>0.313</i>				<i>1.909</i>	<i>2.125</i>	<i>0.906</i>	<i>1.312</i>
# P-XL-030-095FF-CZ-N-095	30	9.6	9.525	Zinc Plated Steel	None	Double Flanged	48.49	53.98	23.01	33.32
		<i>0.378</i>	<i>0.375</i>				<i>1.909</i>	<i>2.125</i>	<i>0.906</i>	<i>1.312</i>

# Indicates item not stocked at time of printing - Please enquire for lead time

Page 8 of 8

E&OE Pricing and all details subject to change without notice - Copyright Miniature Bearings Australia Pty Ltd

MBA Size Listings are a guide to sizes only and must not be solely relied on for critical design information.



DISTRIBUTED BY

Distributed By:

