



# **Pulleys - Timing - 9.525mm Pitch - L - 12.7mm Wide - Aluminium**

10/4/2018

# Indicates item not stocked at time of printing - Please enquire for lead time

E&OE Pricing and all details subject to change without notice - Copyright Miniature Bearings Australia Pty Ltd

MBA Size Listings are a guide to sizes only and must not be solely relied on for critical design information.

Page 1 of 9

## INFORMATION

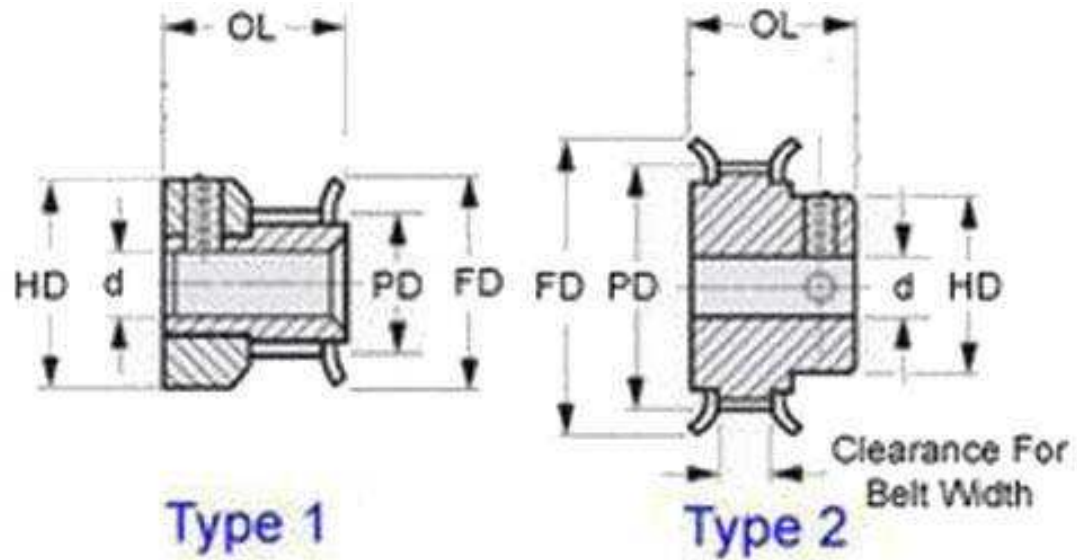
Timing Pulleys to suit L Series 9.525mm Pitch Timing Belts.

This catalogue to be read in conjunction with information at  
<http://www.minibearings.com.au//partslist/beltstiming9525mmpitchl125mmwide/beltstiming9525mmpitchl125mmwide/A/1/>  
<http://www.minibearings.com.au//partslist/beltstiming9525mmpitchldoublesided127mm/beltstiming9525mmpitchldoublesided127mm/A/1/>  
<http://www.minibearings.com.au//www.smallparts.com.au/store/categories/easy+kits/>

# Indicates item not stocked at time of printing - Please enquire for lead time

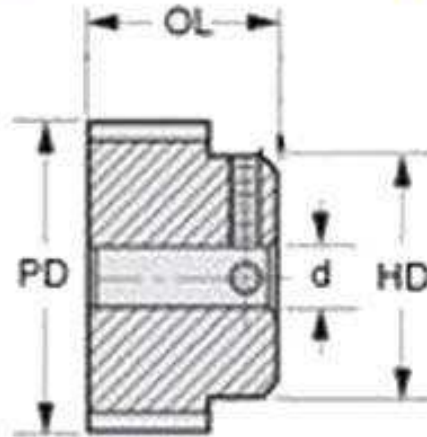
E&OE Pricing and all details subject to change without notice - Copyright Miniature Bearings Australia Pty Ltd

MBA Size Listings are a guide to sizes only and must not be solely relied on for critical design information.



Type 1

Type 2



Type 3

# Indicates item not stocked at time of printing - Please enquire for lead time

E&OE Pricing and all details subject to change without notice - Copyright Miniature Bearings Australia Pty Ltd

MBA Size Listings are a guide to sizes only and must not be solely relied on for critical design information.

## Pulleys - Timing - 9.525mm Pitch - L - 12.7mm Wide - Aluminium

Part Number	Teeth	Max Belt Width mm	Bore (d) mm	Material	Locking Type	Type (See Diagram)	Pitch Diameter (PD) mm	Flange Diameter (FD) mm	Overall Length (OL) mm	Hub Diameter (HD) mm
		<i>inches</i>	<i>inches</i>				<i>inches</i>	<i>inches</i>	<i>inches</i>	<i>inches</i>
P-L9-010-125FF-AL-G-100	10	12.7	10.000	Aluminium Alloy - Clear Anodised	Set Screw	3BF	30.31	36.5	28.60	22.20
		<i>0.500</i>	<i>0.394</i>				<i>1.193</i>	<i>1.437</i>	<i>1.126</i>	<i>0.874</i>
# P-L9-010-127FF-AL-G-095	10	12.7	9.525	Aluminium Alloy - Clear Anodised	Set Screw	3BF	30.31	36.5	28.58	22.23
		<i>0.500</i>	<i>0.375</i>				<i>1.193</i>	<i>1.437</i>	<i>1.125</i>	<i>0.875</i>
P-L9-010-127FF-AL-G-127	10	12.7	12.700	Aluminium Alloy - Clear Anodised	Set Screw	3BF	30.31	36.5	28.58	22.23
		<i>0.500</i>	<i>0.500</i>				<i>1.193</i>	<i>1.437</i>	<i>1.125</i>	<i>0.875</i>
# P-L9-011-125FF-AL-G-100	11	12.7	10.000	Aluminium Alloy - Clear Anodised	Set Screw	3BF	33.34	38.9	28.60	25.40
		<i>0.500</i>	<i>0.394</i>				<i>1.313</i>	<i>1.531</i>	<i>1.126</i>	<i>1.000</i>
# P-L9-011-127FF-AL-G-095	11	12.7	9.525	Aluminium Alloy - Clear Anodised	Set Screw	3BF	33.34	38.9	28.58	25.40
		<i>0.500</i>	<i>0.375</i>				<i>1.313</i>	<i>1.531</i>	<i>1.125</i>	<i>1.000</i>
# P-L9-011-127FF-AL-G-127	11	12.7	12.700	Aluminium Alloy - Clear Anodised	Set Screw	3BF	33.34	38.9	28.58	25.40
		<i>0.500</i>	<i>0.500</i>				<i>1.313</i>	<i>1.531</i>	<i>1.125</i>	<i>1.000</i>
# P-L9-012-125FF-AL-G-100	12	12.7	10.000	Aluminium Alloy - Clear Anodised	Set Screw	3BF	36.37	42.0	30.20	28.60
		<i>0.500</i>	<i>0.394</i>				<i>1.432</i>	<i>1.654</i>	<i>1.189</i>	<i>1.126</i>

# Indicates item not stocked at time of printing - Please enquire for lead time

Page 4 of 9

E&OE Pricing and all details subject to change without notice - Copyright Miniature Bearings Australia Pty Ltd  
MBA Size Listings are a guide to sizes only and must not be solely relied on for critical design information.

## Pulleys - Timing - 9.525mm Pitch - L - 12.7mm Wide - Aluminium

Part Number	Teeth	Max Belt Width mm	Bore (d) mm	Material	Locking Type	Type (See Diagram)	Pitch Diameter (PD) mm	Flange Diameter (FD) mm	Overall Length (OL) mm	Hub Diameter (HD) mm
		<i>inches</i>	<i>inches</i>				<i>inches</i>	<i>inches</i>	<i>inches</i>	<i>inches</i>
# P-L9-012-127FF-AL-G-095	12	12.7	9.525	Aluminium Alloy - Clear Anodised	Set Screw	3BF	36.37	42.1	30.16	28.58
		<i>0.500</i>	<i>0.375</i>				<i>1.432</i>	<i>1.657</i>	<i>1.187</i>	<i>1.125</i>
# P-L9-012-127FF-AL-G-127	12	12.7	12.700	Aluminium Alloy - Clear Anodised	Set Screw	3BF	36.37	42.1	30.16	28.58
		<i>0.500</i>	<i>0.500</i>				<i>1.432</i>	<i>1.657</i>	<i>1.187</i>	<i>1.125</i>
# P-L9-013-125FF-AL-G-100	13	12.7	10.000	Aluminium Alloy - Clear Anodised	Set Screw	3BF	39.40	45.2	30.20	28.60
		<i>0.500</i>	<i>0.394</i>				<i>1.551</i>	<i>1.780</i>	<i>1.189</i>	<i>1.126</i>
# P-L9-013-127FF-AL-G-095	13	12.7	9.525	Aluminium Alloy - Clear Anodised	Set Screw	3BF	39.40	45.2	30.16	28.58
		<i>0.500</i>	<i>0.375</i>				<i>1.551</i>	<i>1.780</i>	<i>1.187</i>	<i>1.125</i>
# P-L9-013-127FF-AL-G-127	13	12.7	12.700	Aluminium Alloy - Clear Anodised	Set Screw	3BF	39.40	45.2	30.16	28.58
		<i>0.500</i>	<i>0.500</i>				<i>1.551</i>	<i>1.780</i>	<i>1.187</i>	<i>1.125</i>
# P-L9-014-125FF-AL-G-120	14	12.7	12.000	Aluminium Alloy - Clear Anodised	Set Screw	3BF	42.43	48.4	30.20	31.70
		<i>0.500</i>	<i>0.472</i>				<i>1.670</i>	<i>1.906</i>	<i>1.189</i>	<i>1.248</i>
# P-L9-014-127FF-AL-G-095	14	12.7	9.525	Aluminium Alloy - Clear Anodised	Set Screw	3BF	42.43	48.4	30.16	31.75
		<i>0.500</i>	<i>0.375</i>				<i>1.670</i>	<i>1.906</i>	<i>1.187</i>	<i>1.250</i>

# Indicates item not stocked at time of printing - Please enquire for lead time

Page 5 of 9

E&OE Pricing and all details subject to change without notice - Copyright Miniature Bearings Australia Pty Ltd

MBA Size Listings are a guide to sizes only and must not be solely relied on for critical design information.

## Pulleys - Timing - 9.525mm Pitch - L - 12.7mm Wide - Aluminium

Part Number	Teeth	Max Belt Width mm	Bore (d) mm	Material	Locking Type	Type (See Diagram)	Pitch Diameter (PD) mm	Flange Diameter (FD) mm	Overall Length (OL) mm	Hub Diameter (HD) mm
		<i>inches</i>	<i>inches</i>				<i>inches</i>	<i>inches</i>	<i>inches</i>	<i>inches</i>
# P-L9-014-127FF-AL-G-127	14	12.7	12.700	Aluminium Alloy - Clear Anodised	Set Screw	3BF	42.43	48.4	30.16	31.75
		<i>0.500</i>	<i>0.500</i>				<i>1.670</i>	<i>1.906</i>	<i>1.187</i>	<i>1.250</i>
# P-L9-015-125FF-AL-G-120	15	12.7	12.000	Aluminium Alloy - Clear Anodised	Set Screw	3BF	45.46	51.6	31.80	35.00
		<i>0.500</i>	<i>0.472</i>				<i>1.790</i>	<i>2.031</i>	<i>1.252</i>	<i>1.378</i>
# P-L9-015-127FF-AL-G-095	15	12.7	9.525	Aluminium Alloy - Clear Anodised	Set Screw	3BF	45.46	51.6	31.75	34.93
		<i>0.500</i>	<i>0.375</i>				<i>1.790</i>	<i>2.031</i>	<i>1.250</i>	<i>1.375</i>
# P-L9-015-127FF-AL-G-127	15	12.7	12.700	Aluminium Alloy - Clear Anodised	Set Screw	3BF	45.46	51.6	31.75	34.93
		<i>0.500</i>	<i>0.500</i>				<i>1.790</i>	<i>2.031</i>	<i>1.250</i>	<i>1.375</i>
# P-L9-016-125FF-AL-G-140	16	12.7	14.000	Aluminium Alloy - Clear Anodised	Set Screw	3BF	48.49	53.9	31.80	35.00
		<i>0.500</i>	<i>0.551</i>				<i>1.909</i>	<i>2.122</i>	<i>1.252</i>	<i>1.378</i>
# P-L9-016-127FF-AL-G-127	16	12.7	12.700	Aluminium Alloy - Clear Anodised	Set Screw	3BF	48.49	54.0	31.75	34.93
		<i>0.500</i>	<i>0.500</i>				<i>1.909</i>	<i>2.126</i>	<i>1.250</i>	<i>1.375</i>
# P-L9-016-127FF-AL-G-159	16	12.7	15.875	Aluminium Alloy - Clear Anodised	Set Screw	3BF	48.49	54.0	31.75	34.93
		<i>0.500</i>	<i>0.625</i>				<i>1.909</i>	<i>2.126</i>	<i>1.250</i>	<i>1.375</i>

# Indicates item not stocked at time of printing - Please enquire for lead time

Page 6 of 9

E&OE Pricing and all details subject to change without notice - Copyright Miniature Bearings Australia Pty Ltd

MBA Size Listings are a guide to sizes only and must not be solely relied on for critical design information.

## Pulleys - Timing - 9.525mm Pitch - L - 12.7mm Wide - Aluminium

Part Number	Teeth	Max Belt Width mm	Bore (d) mm	Material	Locking Type	Type (See Diagram)	Pitch Diameter (PD) mm	Flange Diameter (FD) mm	Overall Length (OL) mm	Hub Diameter (HD) mm
		<i>inches</i>	<i>inches</i>				<i>inches</i>	<i>inches</i>	<i>inches</i>	<i>inches</i>
# P-L9-017-125FF-AL-G-140	17	12.7	14.000	Aluminium Alloy - Clear Anodised	Set Screw	3BF	51.52	57.1	31.80	38.00
		<i>0.500</i>	<i>0.551</i>				<i>2.028</i>	<i>2.248</i>	<i>1.252</i>	<i>1.496</i>
# P-L9-017-127FF-AL-G-127	17	12.7	12.700	Aluminium Alloy - Clear Anodised	Set Screw	3BF	51.52	57.2	31.75	38.10
		<i>0.500</i>	<i>0.500</i>				<i>2.028</i>	<i>2.252</i>	<i>1.250</i>	<i>1.500</i>
# P-L9-017-127FF-AL-G-159	17	12.7	15.875	Aluminium Alloy - Clear Anodised	Set Screw	3BF	51.52	57.2	31.75	38.10
		<i>0.500</i>	<i>0.625</i>				<i>2.028</i>	<i>2.252</i>	<i>1.250</i>	<i>1.500</i>
# P-L9-018-125FF-AL-G-140	18	12.7	14.000	Aluminium Alloy - Clear Anodised	Set Screw	3BF	54.55	60.3	31.80	41.30
		<i>0.500</i>	<i>0.551</i>				<i>2.148</i>	<i>2.374</i>	<i>1.252</i>	<i>1.626</i>
# P-L9-018-127FF-AL-G-127	18	12.7	12.700	Aluminium Alloy - Clear Anodised	Set Screw	3BF	54.55	60.3	31.75	41.28
		<i>0.500</i>	<i>0.500</i>				<i>2.148</i>	<i>2.374</i>	<i>1.250</i>	<i>1.625</i>
# P-L9-018-127FF-AL-G-159	18	12.7	15.875	Aluminium Alloy - Clear Anodised	Set Screw	3BF	54.55	60.3	31.75	41.28
		<i>0.500</i>	<i>0.625</i>				<i>2.148</i>	<i>2.374</i>	<i>1.250</i>	<i>1.625</i>
# P-L9-019-125FF-AL-G-140	19	12.7	14.000	Aluminium Alloy - Clear Anodised	Set Screw	3BF	57.58	63.5	33.30	42.80
		<i>0.500</i>	<i>0.551</i>				<i>2.267</i>	<i>2.500</i>	<i>1.311</i>	<i>1.685</i>

# Indicates item not stocked at time of printing - Please enquire for lead time

Page 7 of 9

E&OE Pricing and all details subject to change without notice - Copyright Miniature Bearings Australia Pty Ltd

MBA Size Listings are a guide to sizes only and must not be solely relied on for critical design information.

## Pulleys - Timing - 9.525mm Pitch - L - 12.7mm Wide - Aluminium

Part Number	Teeth	Max Belt Width mm	Bore (d) mm	Material	Locking Type	Type (See Diagram)	Pitch Diameter (PD) mm	Flange Diameter (FD) mm	Overall Length (OL) mm	Hub Diameter (HD) mm
		<i>inches</i>	<i>inches</i>				<i>inches</i>	<i>inches</i>	<i>inches</i>	<i>inches</i>
# P-L9-019-127FF-AL-G-127	19	12.7	12.700	Aluminium Alloy - Clear Anodised	Set Screw	3BF	57.58	63.5	33.34	42.86
		<i>0.500</i>	<i>0.500</i>				<i>2.267</i>	<i>2.500</i>	<i>1.313</i>	<i>1.687</i>
# P-L9-019-127FF-AL-G-159	19	12.7	15.875	Aluminium Alloy - Clear Anodised	Set Screw	3BF	57.58	63.5	33.34	42.86
		<i>0.500</i>	<i>0.625</i>				<i>2.267</i>	<i>2.500</i>	<i>1.313</i>	<i>1.687</i>
P-L9-020-125FF-AL-G-140	20	12.7	14.000	Aluminium Alloy - Clear Anodised	Set Screw	3BF	60.61	66.6	33.30	46.00
		<i>0.500</i>	<i>0.551</i>				<i>2.386</i>	<i>2.622</i>	<i>1.311</i>	<i>1.811</i>
# P-L9-020-127FF-AL-G-127	20	12.7	12.700	Aluminium Alloy - Clear Anodised	Set Screw	3BF	60.61	66.7	33.34	46.04
		<i>0.500</i>	<i>0.500</i>				<i>2.386</i>	<i>2.626</i>	<i>1.313</i>	<i>1.813</i>
# P-L9-020-127FF-AL-G-159	20	12.7	15.875	Aluminium Alloy - Clear Anodised	Set Screw	3BF	60.61	66.7	33.34	46.04
		<i>0.500</i>	<i>0.625</i>				<i>2.386</i>	<i>2.626</i>	<i>1.313</i>	<i>1.813</i>
# P-L9-021-125FF-AL-G-140	21	12.7	14.000	Aluminium Alloy - Clear Anodised	Set Screw	3BF	63.64	69.8	34.90	50.80
		<i>0.500</i>	<i>0.551</i>				<i>2.506</i>	<i>2.748</i>	<i>1.374</i>	<i>2.000</i>
# P-L9-021-127FF-AL-G-127	21	12.7	12.700	Aluminium Alloy - Clear Anodised	Set Screw	3BF	63.64	69.9	34.93	50.80
		<i>0.500</i>	<i>0.500</i>				<i>2.506</i>	<i>2.752</i>	<i>1.375</i>	<i>2.000</i>

# Indicates item not stocked at time of printing - Please enquire for lead time

Page 8 of 9

E&OE Pricing and all details subject to change without notice - Copyright Miniature Bearings Australia Pty Ltd  
MBA Size Listings are a guide to sizes only and must not be solely relied on for critical design information.



## Pulleys - Timing - 9.525mm Pitch - L - 12.7mm Wide - Aluminium

Part Number	Teeth	Max Belt Width mm	Bore (d) mm	Material	Locking Type	Type (See Diagram)	Pitch Diameter (PD) mm	Flange Diameter (FD) mm	Overall Length (OL) mm	Hub Diameter (HD) mm
		<i>inches</i>	<i>inches</i>				<i>inches</i>	<i>inches</i>	<i>inches</i>	<i>inches</i>
# P-L9-021-127FF-AL-G-159	21	12.7	15.875	Aluminium Alloy - Clear Anodised	Set Screw	3BF	63.64	69.9	34.93	50.80
		<i>0.500</i>	<i>0.625</i>				<i>2.506</i>	<i>2.752</i>	<i>1.375</i>	<i>2.000</i>
# P-L9-022-125FF-AL-G-140	22	12.7	14.000	Aluminium Alloy - Clear Anodised	Set Screw	3BF	66.68	73.0	34.90	54.00
		<i>0.500</i>	<i>0.551</i>				<i>2.625</i>	<i>2.874</i>	<i>1.374</i>	<i>2.126</i>
# P-L9-022-127FF-AL-G-127	22	12.7	12.700	Aluminium Alloy - Clear Anodised	Set Screw	3BF	66.68	73.0	34.93	53.98
		<i>0.500</i>	<i>0.500</i>				<i>2.625</i>	<i>2.874</i>	<i>1.375</i>	<i>2.125</i>
# P-L9-022-127FF-AL-G-159	22	12.7	15.875	Aluminium Alloy - Clear Anodised	Set Screw	3BF	66.68	73.0	34.93	53.98
		<i>0.500</i>	<i>0.625</i>				<i>2.625</i>	<i>2.874</i>	<i>1.375</i>	<i>2.125</i>
# P-L9-024-125FF-AL-G-140	24	12.7	14.000	Aluminium Alloy - Clear Anodised	Set Screw	3BF	72.74	78.5	34.90	57.10
		<i>0.500</i>	<i>0.551</i>				<i>2.864</i>	<i>3.091</i>	<i>1.374</i>	<i>2.248</i>
P-L9-024-127FF-AL-G-127	24	12.7	12.700	Aluminium Alloy - Clear Anodised	Set Screw	3BF	72.74	78.6	34.93	57.15
		<i>0.500</i>	<i>0.500</i>				<i>2.864</i>	<i>3.094</i>	<i>1.375</i>	<i>2.250</i>
# P-L9-024-127FF-AL-G-159	24	12.7	15.875	Aluminium Alloy - Clear Anodised	Set Screw	3BF	72.74	78.6	34.93	57.15
		<i>0.500</i>	<i>0.625</i>				<i>2.864</i>	<i>3.094</i>	<i>1.375</i>	<i>2.250</i>

# Indicates item not stocked at time of printing - Please enquire for lead time

Page 9 of 9

E&OE Pricing and all details subject to change without notice - Copyright Miniature Bearings Australia Pty Ltd  
MBA Size Listings are a guide to sizes only and must not be solely relied on for critical design information.

DISTRIBUTED BY

Distributed By:

