



# **Pulleys - Timing - 9.525mm Pitch - L - 12.7mm Wide - Steel - Zinc Plated**

10/4/2018

# Indicates item not stocked at time of printing - Please enquire for lead time

E&OE Pricing and all details subject to change without notice - Copyright Miniature Bearings Australia Pty Ltd

MBA Size Listings are a guide to sizes only and must not be solely relied on for critical design information.

## INFORMATION

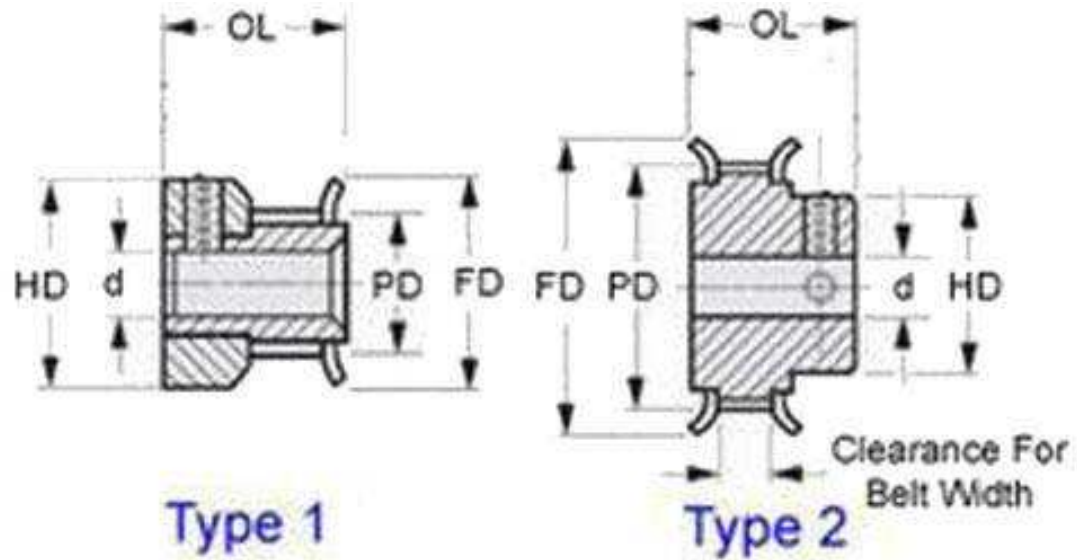
Timing Pulleys to suit L Series 9.525mm Pitch Timing Belts.. Zinc Plated with unfinished bore.

This catalogue to be read in conjunction with information at  
<http://www.minibearings.com.au//partslist/beltstiming9525mmpitchl125mmwide/beltstiming9525mmpitchl125mmwide/A/1/>  
<http://www.minibearings.com.au//partslist/beltstiming9525mmpitchldoublesided127mm/beltstiming9525mmpitchldoublesided127mm/A/1/>  
<http://www.minibearings.com.au/www.smallparts.com.au/store/categories/easy+kits/>

# Indicates item not stocked at time of printing - Please enquire for lead time

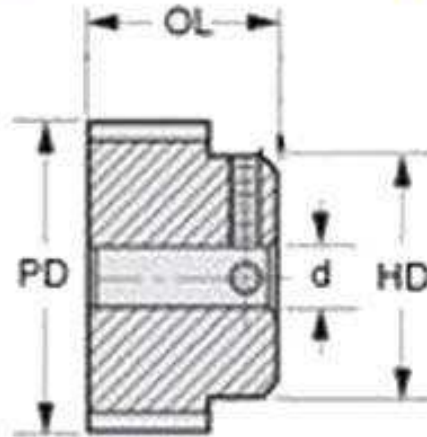
E&OE Pricing and all details subject to change without notice - Copyright Miniature Bearings Australia Pty Ltd

MBA Size Listings are a guide to sizes only and must not be solely relied on for critical design information.



Type 1

Type 2



Type 3

# Indicates item not stocked at time of printing - Please enquire for lead time

E&OE Pricing and all details subject to change without notice - Copyright Miniature Bearings Australia Pty Ltd

MBA Size Listings are a guide to sizes only and must not be solely relied on for critical design information.

## Pulleys - Timing - 9.525mm Pitch - L - 12.7mm Wide - Steel - Zinc Plated

Part Number	Teeth	Max Belt Width mm	Bore (d) mm	Material	Locking Type	Type (See Diagram)	Pitch Diameter (PD) mm	Flange Diameter (FD) mm	Overall Length (OL) mm	Hub Diameter (HD) mm
		<i>inches</i>	<i>inches</i>				<i>inches</i>	<i>inches</i>	<i>inches</i>	<i>inches</i>
# P-L9-010-127FF-CZ-N-095	10	12.7	9.525	Zinc Plated Steel	No Locking	Double Flanged	30.31	36.53	31.75	20.62
		<i>0.500</i>	<i>0.375</i>				<i>1.193</i>	<i>1.438</i>	<i>1.250</i>	<i>0.812</i>
# P-L9-012-127FF-CZ-N-095	12	12.7	9.525	Zinc Plated Steel	No Locking	Double Flanged	36.37	42.06	31.75	25.40
		<i>0.500</i>	<i>0.375</i>				<i>1.432</i>	<i>1.656</i>	<i>1.250</i>	<i>1.000</i>
# P-L9-013-127FF-CZ-N-095	13	12.7	9.525	Zinc Plated Steel	No Locking	Double Flanged	39.4	45.24	31.75	28.58
		<i>0.500</i>	<i>0.375</i>				<i>1.551</i>	<i>1.781</i>	<i>1.250</i>	<i>1.125</i>
# P-L9-014-127FF-CZ-N-095	14	12.7	9.525	Zinc Plated Steel	No Locking	Double Flanged	42.43	48.41	31.75	28.58
		<i>0.500</i>	<i>0.375</i>				<i>1.670</i>	<i>1.906</i>	<i>1.250</i>	<i>1.125</i>
# P-L9-015-127FF-CZ-N-127	15	12.7	12.7	Zinc Plated Steel	No Locking	Double Flanged	45.46	51.59	31.75	34.14
		<i>0.500</i>	<i>0.500</i>				<i>1.790</i>	<i>2.031</i>	<i>1.250</i>	<i>1.344</i>
# P-L9-016-127FF-CZ-N-127	16	12.7	12.7	Zinc Plated Steel	No Locking	Double Flanged	48.49	53.98	31.75	36.50
		<i>0.500</i>	<i>0.500</i>				<i>1.909</i>	<i>2.125</i>	<i>1.250</i>	<i>1.437</i>
# P-L9-017-127FF-CZ-N-127	17	12.7	12.7	Zinc Plated Steel	No Locking	Double Flanged	51.52	57.15	31.75	36.50
		<i>0.500</i>	<i>0.500</i>				<i>2.028</i>	<i>2.250</i>	<i>1.250</i>	<i>1.437</i>
# P-L9-018-127FF-CZ-N-127	18	12.7	12.7	Zinc Plated Steel	No Locking	Double Flanged	54.55	60.33	31.75	39.70
		<i>0.500</i>	<i>0.500</i>				<i>2.148</i>	<i>2.375</i>	<i>1.250</i>	<i>1.563</i>

# Indicates item not stocked at time of printing - Please enquire for lead time

Page 4 of 6

E&OE Pricing and all details subject to change without notice - Copyright Miniature Bearings Australia Pty Ltd  
MBA Size Listings are a guide to sizes only and must not be solely relied on for critical design information.

## Pulleys - Timing - 9.525mm Pitch - L - 12.7mm Wide - Steel - Zinc Plated

Part Number	Teeth	Max Belt Width mm	Bore (d) mm	Material	Locking Type	Type (See Diagram)	Pitch Diameter (PD) mm	Flange Diameter (FD) mm	Overall Length (OL) mm	Hub Diameter (HD) mm
		<i>inches</i>	<i>inches</i>				<i>inches</i>	<i>inches</i>	<i>inches</i>	<i>inches</i>
# P-L9-019-127FF-CZ-N-127	19	12.7 <i>0.500</i>	12.7 <i>0.500</i>	Zinc Plated Steel	No Locking	Double Flanged	57.58 <i>2.267</i>	63.50 <i>2.500</i>	31.75 <i>1.250</i>	42.85 <i>1.687</i>
# P-L9-020-127FF-CZ-N-127	20	12.7 <i>0.500</i>	12.7 <i>0.500</i>	Zinc Plated Steel	No Locking	Double Flanged	60.61 <i>2.386</i>	66.68 <i>2.625</i>	31.75 <i>1.250</i>	42.85 <i>1.687</i>
# P-L9-021-127FF-CZ-N-127	21	12.7 <i>0.500</i>	12.7 <i>0.500</i>	Zinc Plated Steel	No Locking	Double Flanged	63.64 <i>2.506</i>	69.85 <i>2.750</i>	31.75 <i>1.250</i>	50.80 <i>2.000</i>
# P-L9-022-127FF-CZ-N-127	22	12.7 <i>0.500</i>	12.7 <i>0.500</i>	Zinc Plated Steel	No Locking	Double Flanged	66.67 <i>2.625</i>	73.03 <i>2.875</i>	31.75 <i>1.250</i>	50.80 <i>2.000</i>
# P-L9-024-127FF-CZ-N-127	24	12.7 <i>0.500</i>	12.7 <i>0.500</i>	Zinc Plated Steel	No Locking	Double Flanged	72.73 <i>2.863</i>	78.59 <i>3.094</i>	31.75 <i>1.250</i>	53.98 <i>2.125</i>
# P-L9-026-127FF-CZ-N-127	26	12.7 <i>0.500</i>	12.7 <i>0.500</i>	Zinc Plated Steel	No Locking	Double Flanged	78.79 <i>3.102</i>	84.58 <i>3.330</i>	31.75 <i>1.250</i>	53.98 <i>2.125</i>
# P-L9-028-127FF-CZ-N-127	28	12.7 <i>0.500</i>	12.7 <i>0.500</i>	Zinc Plated Steel	No Locking	Double Flanged	84.86 <i>3.341</i>	90.58 <i>3.566</i>	31.75 <i>1.250</i>	57.15 <i>2.250</i>
# P-L9-030-127FF-CZ-N-127	30	12.7 <i>0.500</i>	12.7 <i>0.500</i>	Zinc Plated Steel	No Locking	Double Flanged	90.92 <i>3.580</i>	96.52 <i>3.800</i>	31.75 <i>1.250</i>	57.15 <i>2.250</i>

# Indicates item not stocked at time of printing - Please enquire for lead time

Page 5 of 6

E&OE Pricing and all details subject to change without notice - Copyright Miniature Bearings Australia Pty Ltd  
MBA Size Listings are a guide to sizes only and must not be solely relied on for critical design information.

## Pulleys - Timing - 9.525mm Pitch - L - 12.7mm Wide - Steel - Zinc Plated

Part Number	Teeth	Max Belt Width mm	Bore (d) mm	Material	Locking Type	Type (See Diagram)	Pitch Diameter (PD) mm	Flange Diameter (FD) mm	Overall Length (OL) mm	Hub Diameter (HD) mm
# P-L9-032-127FF-CZ-N-127	32	12.7 <i>0.500 inches</i>	12.7 <i>0.500 inches</i>	Zinc Plated Steel	No Locking	Double Flanged	96.98 <i>3.818 inches</i>	102.72 <i>4.044 inches</i>	31.75 <i>1.250 inches</i>	66.68 <i>2.625 inches</i>
# P-L9-036-127FF-CZ-N-127	36	12.7 <i>0.500 inches</i>	12.7 <i>0.500 inches</i>	Zinc Plated Steel	No Locking	Double Flanged	109.1 <i>4.295 inches</i>	114.81 <i>4.520 inches</i>	31.75 <i>1.250 inches</i>	88.90 <i>3.500 inches</i>
# P-L9-040-127FF-CZ-N-127	40	12.7 <i>0.500 inches</i>	12.7 <i>0.500 inches</i>	Zinc Plated Steel	No Locking	Double Flanged	121.22 <i>4.772 inches</i>	127.00 <i>5.000 inches</i>	31.75 <i>1.250 inches</i>	92.08 <i>3.625 inches</i>

# Indicates item not stocked at time of printing - Please enquire for lead time

Page 6 of 6

E&OE Pricing and all details subject to change without notice - Copyright Miniature Bearings Australia Pty Ltd  
MBA Size Listings are a guide to sizes only and must not be solely relied on for critical design information.

DISTRIBUTED BY

Distributed By:

