



# **Pulleys - Timing - 9.525mm Pitch - L - 12.7mm Wide - Steel**

10/4/2018

# Indicates item not stocked at time of printing - Please enquire for lead time

E&OE Pricing and all details subject to change without notice - Copyright Miniature Bearings Australia Pty Ltd

MBA Size Listings are a guide to sizes only and must not be solely relied on for critical design information.

Page 1 of 8

## INFORMATION

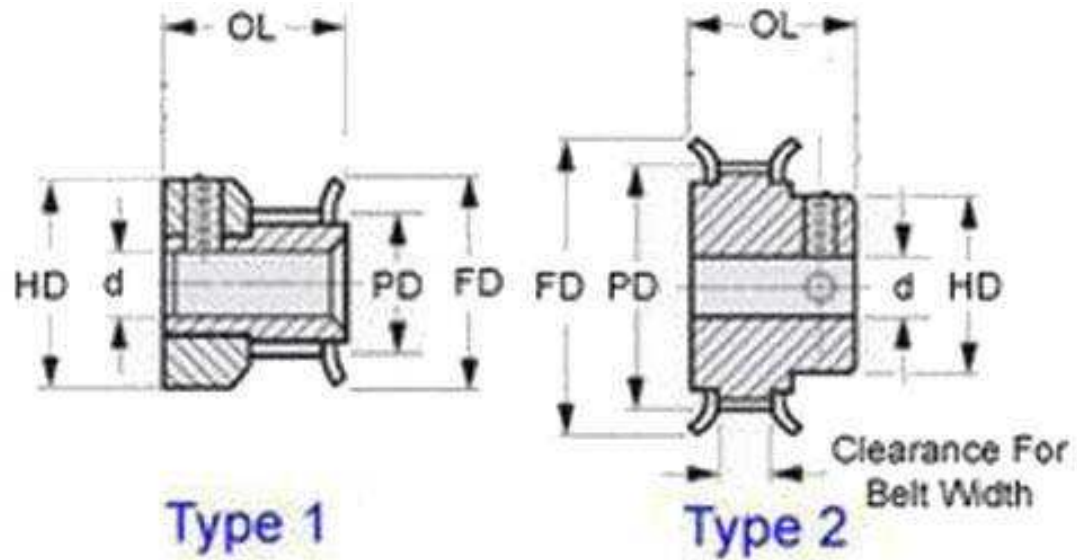
Timing Pulleys to suit L Series 9.525mm Pitch Timing Belts.

This catalogue to be read in conjunction with information at  
<http://www.minibearings.com.au//partslist/beltstiming9525mmpitchl125mmwide/beltstiming9525mmpitchl125mmwide/A/1/>  
<http://www.minibearings.com.au//partslist/beltstiming9525mmpitchldoublesided127mm/beltstiming9525mmpitchldoublesided127mm/A/1/>  
<http://www.minibearings.com.au//www.smallparts.com.au/store/categories/easy+kits/>

# Indicates item not stocked at time of printing - Please enquire for lead time

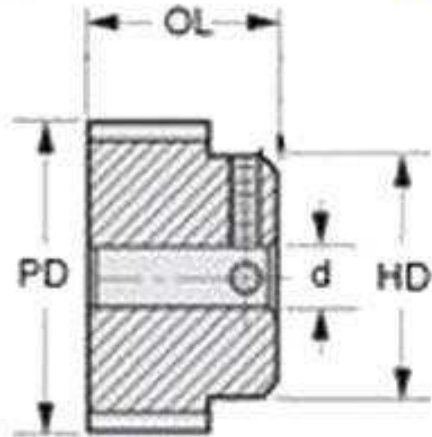
E&OE Pricing and all details subject to change without notice - Copyright Miniature Bearings Australia Pty Ltd

MBA Size Listings are a guide to sizes only and must not be solely relied on for critical design information.



Type 1

Type 2



Type 3

# Indicates item not stocked at time of printing - Please enquire for lead time

E&OE Pricing and all details subject to change without notice - Copyright Miniature Bearings Australia Pty Ltd

MBA Size Listings are a guide to sizes only and must not be solely relied on for critical design information.

## Pulleys - Timing - 9.525mm Pitch - L - 12.7mm Wide - Steel

Part Number	Teeth	Max Belt Width mm	Bore (d) mm	Material	Locking Type	Type (See Diagram)	Pitch Diameter (PD) mm	Flange Diameter (FD) mm	Overall Length (OL) mm	Hub Diameter (HD) mm
		<i>inches</i>	<i>inches</i>				<i>inches</i>	<i>inches</i>	<i>inches</i>	<i>inches</i>
# P-L9-010-127FF-ST-N-095	10	12.7	9.525	Steel, Black Oxide Finish	No locking device	3BF	30.328	37.084	31.750	22.225
		<i>0.500</i>	<i>0.375</i>				<i>1.194</i>	<i>1.460</i>	<i>1.250</i>	<i>0.875</i>
# P-L9-010-127FF-ST-G-095	10	12.7	9.525	Steel, Black Oxide Finish	Set Screws	3BF	30.328	36.068	28.972	20.574
		<i>0.500</i>	<i>0.375</i>				<i>1.194</i>	<i>1.420</i>	<i>1.141</i>	<i>0.810</i>
# P-L9-010-127FF-ST-G-127	10	12.7	12.700	Steel, Black Oxide Finish	Set Screws	3BF	30.328	36.068	28.972	20.574
		<i>0.500</i>	<i>0.500</i>				<i>1.194</i>	<i>1.420</i>	<i>1.141</i>	<i>0.810</i>
# P-L9-012-127FF-ST-G-095	12	12.7	9.525	Steel, Black Oxide Finish	Set Screws	3BF	36.373	41.910	31.750	26.924
		<i>0.500</i>	<i>0.375</i>				<i>1.432</i>	<i>1.650</i>	<i>1.250</i>	<i>1.060</i>
# P-L9-012-127FF-ST-N-095	12	12.7	9.525	Steel, Black Oxide Finish	No locking device	3BF	36.373	42.926	31.750	28.575
		<i>0.500</i>	<i>0.375</i>				<i>1.432</i>	<i>1.690</i>	<i>1.250</i>	<i>1.125</i>
# P-L9-012-127FF-ST-G-127	12	12.7	12.700	Steel, Black Oxide Finish	Set Screws	3BF	36.373	41.910	31.750	26.924
		<i>0.500</i>	<i>0.500</i>				<i>1.432</i>	<i>1.650</i>	<i>1.250</i>	<i>1.060</i>
# P-L9-013-127FF-ST-G-095	13	12.7	9.525	Steel	Set Screw	3BF	39.40	46.0	31.75	28.58
		<i>0.500</i>	<i>0.375</i>				<i>1.551</i>	<i>1.811</i>	<i>1.250</i>	<i>1.125</i>
# P-L9-013-127FF-ST-N-095	13	12.7	9.525	Steel, Black Oxide Finish	No locking device	3BF	39.421	43.942	31.750	30.956
		<i>0.500</i>	<i>0.375</i>				<i>1.552</i>	<i>1.730</i>	<i>1.250</i>	<i>1.219</i>

# Indicates item not stocked at time of printing - Please enquire for lead time

Page 4 of 8

E&OE Pricing and all details subject to change without notice - Copyright Miniature Bearings Australia Pty Ltd  
MBA Size Listings are a guide to sizes only and must not be solely relied on for critical design information.

## Pulleys - Timing - 9.525mm Pitch - L - 12.7mm Wide - Steel

Part Number	Teeth	Max Belt Width mm	Bore (d) mm	Material	Locking Type	Type (See Diagram)	Pitch Diameter (PD) mm	Flange Diameter (FD) mm	Overall Length (OL) mm	Hub Diameter (HD) mm
		<i>inches</i>	<i>inches</i>				<i>inches</i>	<i>inches</i>	<i>inches</i>	<i>inches</i>
# P-L9-013-127FF-ST-G-127	13	12.7 <i>0.500</i>	12.700 <i>0.500</i>	Steel	Set Screw	3BF	39.40 <i>1.551</i>	46.0 <i>1.811</i>	31.75 <i>1.250</i>	28.58 <i>1.125</i>
# P-L9-014-127FF-ST-G-095	14	12.7 <i>0.500</i>	9.525 <i>0.375</i>	Steel, Black Oxide Finish	Set Screws	3BF	42.443 <i>1.671</i>	48.006 <i>1.890</i>	31.750 <i>1.250</i>	28.702 <i>1.130</i>
# P-L9-014-127FF-ST-N-095	14	12.7 <i>0.500</i>	9.525 <i>0.375</i>	Steel, Black Oxide Finish	No locking device	3BF	42.443 <i>1.671</i>	48.006 <i>1.890</i>	31.750 <i>1.250</i>	33.338 <i>1.313</i>
# P-L9-014-127FF-ST-G-127	14	12.7 <i>0.500</i>	12.700 <i>0.500</i>	Steel, Black Oxide Finish	Set Screws	3BF	42.443 <i>1.671</i>	48.006 <i>1.890</i>	31.750 <i>1.250</i>	28.702 <i>1.130</i>
# P-L9-015-127FF-ST-G-127	15	12.7 <i>0.500</i>	12.700 <i>0.500</i>	Steel	Set Screw	3BF	45.46 <i>1.790</i>	52.4 <i>2.063</i>	31.75 <i>1.250</i>	34.13 <i>1.344</i>
# P-L9-015-127FF-ST-N-127	15	12.7 <i>0.500</i>	12.700 <i>0.500</i>	Steel, Black Oxide Finish	No locking device	3BF	45.466 <i>1.790</i>	51.054 <i>2.010</i>	31.750 <i>1.250</i>	34.925 <i>1.375</i>
# P-L9-016-127FF-ST-G-095	16	12.7 <i>0.500</i>	9.525 <i>0.375</i>	Steel, Black Oxide Finish	Set Screws	3BF	48.514 <i>1.910</i>	54.102 <i>2.130</i>	35.322 <i>1.391</i>	36.576 <i>1.440</i>
# P-L9-016-127FF-ST-G-127	16	12.7 <i>0.500</i>	12.700 <i>0.500</i>	Steel, Black Oxide Finish	Set Screws	3BF	48.514 <i>1.910</i>	54.102 <i>2.130</i>	35.322 <i>1.391</i>	36.576 <i>1.440</i>

# Indicates item not stocked at time of printing - Please enquire for lead time

Page 5 of 8

E&OE Pricing and all details subject to change without notice - Copyright Miniature Bearings Australia Pty Ltd  
MBA Size Listings are a guide to sizes only and must not be solely relied on for critical design information.

## Pulleys - Timing - 9.525mm Pitch - L - 12.7mm Wide - Steel

Part Number	Teeth	Max Belt Width mm	Bore (d) mm	Material	Locking Type	Type (See Diagram)	Pitch Diameter (PD) mm	Flange Diameter (FD) mm	Overall Length (OL) mm	Hub Diameter (HD) mm
		<i>inches</i>	<i>inches</i>				<i>inches</i>	<i>inches</i>	<i>inches</i>	<i>inches</i>
# P-L9-016-127FF-ST-N-127	16	12.7	12.700	Steel, Black Oxide Finish	No locking device	3BF	48.514	54.102	31.750	38.100
		<i>0.500</i>	<i>0.500</i>				<i>1.910</i>	<i>2.130</i>	<i>1.250</i>	<i>1.500</i>
# P-L9-017-127FF-ST-G-095	17	12.7	9.525	Steel, Black Oxide Finish	Set Screws	3BF	51.537	56.896	35.322	38.100
		<i>0.500</i>	<i>0.375</i>				<i>2.029</i>	<i>2.240</i>	<i>1.391</i>	<i>1.500</i>
# P-L9-017-127FF-ST-G-127	17	12.7	12.700	Steel, Black Oxide Finish	Set Screws	3BF	51.537	56.896	35.322	38.100
		<i>0.500</i>	<i>0.500</i>				<i>2.029</i>	<i>2.240</i>	<i>1.391</i>	<i>1.500</i>
# P-L9-017-127FF-ST-N-127	17	12.7	12.700	Steel, Black Oxide Finish	No locking device	3BF	51.537	56.896	31.750	38.100
		<i>0.500</i>	<i>0.500</i>				<i>2.029</i>	<i>2.240</i>	<i>1.250</i>	<i>1.500</i>
# P-L9-018-127FF-ST-G-095	18	12.7	9.525	Steel, Black Oxide Finish	Set Screws	3BF	54.585	59.944	35.322	39.624
		<i>0.500</i>	<i>0.375</i>				<i>2.149</i>	<i>2.360</i>	<i>1.391</i>	<i>1.560</i>
# P-L9-018-127FF-ST-G-127	18	12.7	12.700	Steel, Black Oxide Finish	Set Screws	3BF	54.585	59.944	35.322	39.624
		<i>0.500</i>	<i>0.500</i>				<i>2.149</i>	<i>2.360</i>	<i>1.391</i>	<i>1.560</i>
# P-L9-019-127FF-ST-G-095	19	12.7	9.525	Steel, Black Oxide Finish	Set Screws	3BF	57.607	64.008	35.322	41.402
		<i>0.500</i>	<i>0.375</i>				<i>2.268</i>	<i>2.520</i>	<i>1.391</i>	<i>1.630</i>
# P-L9-019-127FF-ST-G-127	19	12.7	12.700	Steel, Black Oxide Finish	Set Screws	3BF	57.607	64.008	35.322	41.402
		<i>0.500</i>	<i>0.500</i>				<i>2.268</i>	<i>2.520</i>	<i>1.391</i>	<i>1.630</i>

# Indicates item not stocked at time of printing - Please enquire for lead time

Page 6 of 8

E&OE Pricing and all details subject to change without notice - Copyright Miniature Bearings Australia Pty Ltd

MBA Size Listings are a guide to sizes only and must not be solely relied on for critical design information.

## Pulleys - Timing - 9.525mm Pitch - L - 12.7mm Wide - Steel

Part Number	Teeth	Max Belt Width mm	Bore (d) mm	Material	Locking Type	Type (See Diagram)	Pitch Diameter (PD) mm	Flange Diameter (FD) mm	Overall Length (OL) mm	Hub Diameter (HD) mm
		<i>inches</i>	<i>inches</i>				<i>inches</i>	<i>inches</i>	<i>inches</i>	<i>inches</i>
# P-L9-020-127FF-ST-G-095	20	12.7	9.525	Steel, Black Oxide Finish	Set Screws	3BF	60.630	66.548	35.322	42.926
		<i>0.500</i>	<i>0.375</i>				<i>2.387</i>	<i>2.620</i>	<i>1.391</i>	<i>1.690</i>
# P-L9-020-127FF-ST-G-127	20	12.7	12.700	Steel, Black Oxide Finish	Set Screws	3BF	60.630	66.548	35.322	42.926
		<i>0.500</i>	<i>0.500</i>				<i>2.387</i>	<i>2.620</i>	<i>1.391</i>	<i>1.690</i>
# P-L9-021-127FF-ST-G-095	21	12.7	9.525	Steel, Black Oxide Finish	Set Screws	3BF	63.678	70.104	36.513	47.752
		<i>0.500</i>	<i>0.375</i>				<i>2.507</i>	<i>2.760</i>	<i>1.438</i>	<i>1.880</i>
# P-L9-021-127FF-ST-G-127	21	12.7	12.700	Steel, Black Oxide Finish	Set Screws	3BF	63.678	70.104	36.513	47.752
		<i>0.500</i>	<i>0.500</i>				<i>2.507</i>	<i>2.760</i>	<i>1.438</i>	<i>1.880</i>
# P-L9-022-127FF-ST-G-095	22	12.7	9.525	Steel, Black Oxide Finish	Set Screws	3BF	66.700	74.930	38.100	50.800
		<i>0.500</i>	<i>0.375</i>				<i>2.626</i>	<i>2.950</i>	<i>1.500</i>	<i>2.000</i>
# P-L9-022-127FF-ST-G-127	22	12.7	12.700	Steel, Black Oxide Finish	Set Screws	3BF	66.700	74.930	38.100	50.800
		<i>0.500</i>	<i>0.500</i>				<i>2.626</i>	<i>2.950</i>	<i>1.500</i>	<i>2.000</i>
# P-L9-024-127FF-ST-G-095	24	12.7	9.525	Steel, Black Oxide Finish	Set Screws	3BF	72.771	78.994	38.100	57.150
		<i>0.500</i>	<i>0.375</i>				<i>2.865</i>	<i>3.110</i>	<i>1.500</i>	<i>2.250</i>
# P-L9-024-127FF-ST-G-127	24	12.7	12.700	Steel, Black Oxide Finish	Set Screws	3BF	72.771	78.994	38.100	57.150
		<i>0.500</i>	<i>0.500</i>				<i>2.865</i>	<i>3.110</i>	<i>1.500</i>	<i>2.250</i>

# Indicates item not stocked at time of printing - Please enquire for lead time

Page 7 of 8

E&OE Pricing and all details subject to change without notice - Copyright Miniature Bearings Australia Pty Ltd

MBA Size Listings are a guide to sizes only and must not be solely relied on for critical design information.

## Pulleys - Timing - 9.525mm Pitch - L - 12.7mm Wide - Steel

Part Number	Teeth	Max Belt Width mm	Bore (d) mm	Material	Locking Type	Type (See Diagram)	Pitch Diameter (PD) mm	Flange Diameter (FD) mm	Overall Length (OL) mm	Hub Diameter (HD) mm
		<i>inches</i>	<i>inches</i>				<i>inches</i>	<i>inches</i>	<i>inches</i>	<i>inches</i>
# P-L9-026-127FF-ST-G-095	26	12.7	9.525	Steel, Black Oxide Finish	Set Screws	3BF	78.842	86.106	38.100	57.150
		<i>0.500</i>	<i>0.375</i>				<i>3.104</i>	<i>3.390</i>	<i>1.500</i>	<i>2.250</i>
# P-L9-026-127FF-ST-G-127	26	12.7	12.700	Steel, Black Oxide Finish	Set Screws	3BF	78.842	86.106	38.100	57.150
		<i>0.500</i>	<i>0.500</i>				<i>3.104</i>	<i>3.390</i>	<i>1.500</i>	<i>2.250</i>
# P-L9-028-127FF-ST-G-095	28	12.7	9.525	Steel, Black Oxide Finish	Set Screws	3BF	84.887	90.932	38.100	57.150
		<i>0.500</i>	<i>0.375</i>				<i>3.342</i>	<i>3.580</i>	<i>1.500</i>	<i>2.250</i>
# P-L9-028-127FF-ST-G-127	28	12.7	12.700	Steel, Black Oxide Finish	Set Screws	3BF	84.887	90.932	38.100	57.150
		<i>0.500</i>	<i>0.500</i>				<i>3.342</i>	<i>3.580</i>	<i>1.500</i>	<i>2.250</i>
# P-L9-030-127FF-ST-G-095	30	12.7	9.525	Steel, Black Oxide Finish	Set Screws	3BF	90.957	97.028	38.100	57.150
		<i>0.500</i>	<i>0.375</i>				<i>3.581</i>	<i>3.820</i>	<i>1.500</i>	<i>2.250</i>
# P-L9-030-127FF-ST-G-127	30	12.7	12.700	Steel, Black Oxide Finish	Set Screws	3BF	90.957	97.028	38.100	57.150
		<i>0.500</i>	<i>0.500</i>				<i>3.581</i>	<i>3.820</i>	<i>1.500</i>	<i>2.250</i>
# P-L9-032-127FF-ST-G-095	32	12.7	9.525	Steel, Black Oxide Finish	Set Screws	3BF	97.028	102.108	41.672	65.024
		<i>0.500</i>	<i>0.375</i>				<i>3.820</i>	<i>4.020</i>	<i>1.641</i>	<i>2.560</i>
# P-L9-032-127FF-ST-G-127	32	12.7	12.700	Steel, Black Oxide Finish	Set Screws	3BF	97.028	102.108	41.672	65.024
		<i>0.500</i>	<i>0.500</i>				<i>3.820</i>	<i>4.020</i>	<i>1.641</i>	<i>2.560</i>

# Indicates item not stocked at time of printing - Please enquire for lead time

Page 8 of 8

E&OE Pricing and all details subject to change without notice - Copyright Miniature Bearings Australia Pty Ltd  
MBA Size Listings are a guide to sizes only and must not be solely relied on for critical design information.



DISTRIBUTED BY

Distributed By:

