



Pulleys - Timing - 9.525mm Pitch - L - 19.05mm Wide - Steel- Zinc Plated

10/4/2018

Indicates item not stocked at time of printing - Please enquire for lead time

E&OE Pricing and all details subject to change without notice - Copyright Miniature Bearings Australia Pty Ltd

MBA Size Listings are a guide to sizes only and must not be solely relied on for critical design information.

INFORMATION

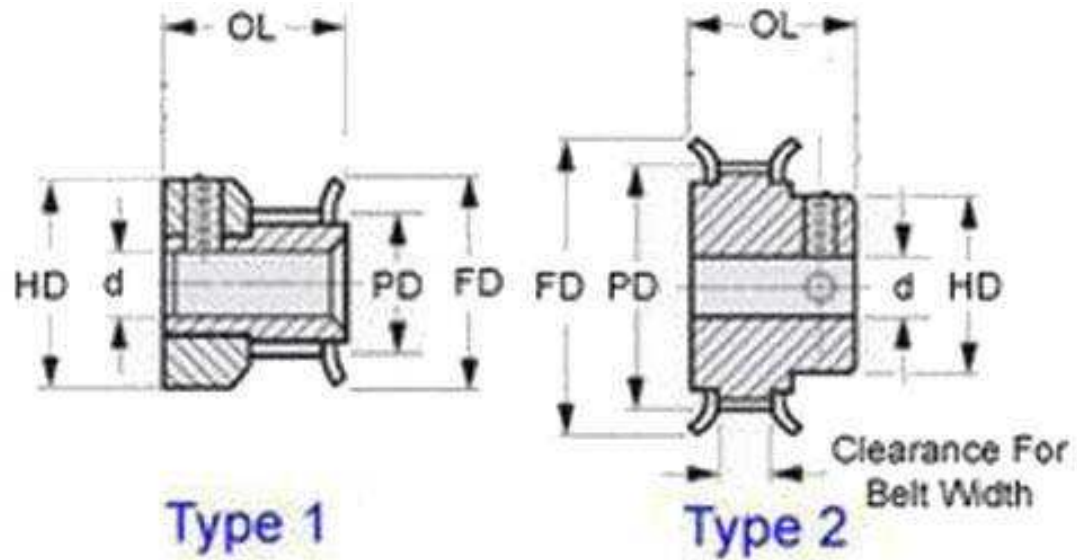
Timing Pulleys to suit L Series 9.525mm Pitch Timing Belts.. Zinc Plated with unfinished bore.

This catalogue to be read in conjunction with information at
<http://www.minibearings.com.au//partslist/beltstiming9525mmpitchl19mmwide/beltstiming9525mmpitchl19mmwide/A/1/>
<http://www.minibearings.com.au//partslist/beltstiming9525mmpitchldoublesided19mm/beltstiming9525mmpitchldoublesided19mm/A/1/>
<http://www.minibearings.com.au/www.smallparts.com.au/store/categories/easy+kits/>

Indicates item not stocked at time of printing - Please enquire for lead time

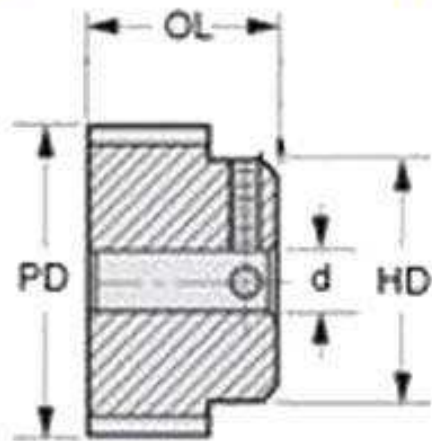
E&OE Pricing and all details subject to change without notice - Copyright Miniature Bearings Australia Pty Ltd

MBA Size Listings are a guide to sizes only and must not be solely relied on for critical design information.



Type 1

Type 2



Type 3

Indicates item not stocked at time of printing - Please enquire for lead time

E&OE Pricing and all details subject to change without notice - Copyright Miniature Bearings Australia Pty Ltd

MBA Size Listings are a guide to sizes only and must not be solely relied on for critical design information.

Pulleys - Timing - 9.525mm Pitch - L - 19.05mm Wide - Steel- Zinc Plated

Part Number	Teeth	Max Belt Width mm	Bore (d) mm	Material	Locking Type	Type (See Diagram)	Pitch Diameter (PD) mm	Flange Diameter (FD) mm	Overall Length (OL) mm	Hub Diameter (HD) mm
		<i>inches</i>	<i>inches</i>				<i>inches</i>	<i>inches</i>	<i>inches</i>	<i>inches</i>
# P-L9-012-191FF-CZ-N-095	12	19.1	9.525	Zinc Plated Steel	No Locking	Double Flanged	36.37	42.06	38.10	25.40
		<i>0.752</i>	<i>0.375</i>				<i>1.432</i>	<i>1.656</i>	<i>1.500</i>	<i>1.000</i>
# P-L9-013-191FF-CZ-N-095	13	19.1	9.525	Zinc Plated Steel	No Locking	Double Flanged	39.40	45.24	38.10	28.58
		<i>0.752</i>	<i>0.375</i>				<i>1.551</i>	<i>1.781</i>	<i>1.500</i>	<i>1.125</i>
# P-L9-014-191FF-CZ-N-095	14	19.1	9.525	Zinc Plated Steel	No Locking	Double Flanged	42.43	48.41	38.10	28.58
		<i>0.752</i>	<i>0.375</i>				<i>1.670</i>	<i>1.906</i>	<i>1.500</i>	<i>1.125</i>
# P-L9-015-191FF-CZ-N-127	15	19.1	12.700	Zinc Plated Steel	No Locking	Double Flanged	45.46	51.59	38.10	34.14
		<i>0.752</i>	<i>0.500</i>				<i>1.790</i>	<i>2.031</i>	<i>1.500</i>	<i>1.344</i>
# P-L9-016-191FF-CZ-N-127	16	19.1	12.700	Zinc Plated Steel	No Locking	Double Flanged	48.49	53.98	38.10	36.50
		<i>0.752</i>	<i>0.500</i>				<i>1.909</i>	<i>2.125</i>	<i>1.500</i>	<i>1.437</i>
# P-L9-017-191FF-CZ-N-127	17	19.1	12.700	Zinc Plated Steel	No Locking	Double Flanged	51.52	57.15	38.10	36.50
		<i>0.752</i>	<i>0.500</i>				<i>2.028</i>	<i>2.250</i>	<i>1.500</i>	<i>1.437</i>
# P-L9-018-191FF-CZ-N-127	18	19.1	12.700	Zinc Plated Steel	No Locking	Double Flanged	54.55	60.33	38.10	39.70
		<i>0.752</i>	<i>0.500</i>				<i>2.148</i>	<i>2.375</i>	<i>1.500</i>	<i>1.563</i>
# P-L9-019-191FF-CZ-N-127	19	19.1	12.700	Zinc Plated Steel	No Locking	Double Flanged	57.58	63.50	38.10	42.85
		<i>0.752</i>	<i>0.500</i>				<i>2.267</i>	<i>2.500</i>	<i>1.500</i>	<i>1.687</i>

Indicates item not stocked at time of printing - Please enquire for lead time

Page 4 of 6

E&OE Pricing and all details subject to change without notice - Copyright Miniature Bearings Australia Pty Ltd
MBA Size Listings are a guide to sizes only and must not be solely relied on for critical design information.

Pulleys - Timing - 9.525mm Pitch - L - 19.05mm Wide - Steel- Zinc Plated

Part Number	Teeth	Max Belt Width mm	Bore (d) mm	Material	Locking Type	Type (See Diagram)	Pitch Diameter (PD) mm	Flange Diameter (FD) mm	Overall Length (OL) mm	Hub Diameter (HD) mm
		<i>inches</i>	<i>inches</i>				<i>inches</i>	<i>inches</i>	<i>inches</i>	<i>inches</i>
# P-L9-020-191FF-CZ-N-127	20	19.1	12.700	Zinc Plated Steel	No Locking	Double Flanged	60.61	66.68	38.10	42.85
		<i>0.752</i>	<i>0.500</i>				<i>2.386</i>	<i>2.625</i>	<i>1.500</i>	<i>1.687</i>
# P-L9-021-191FF-CZ-N-159	21	19.1	15.875	Zinc Plated Steel	No Locking	Double Flanged	63.64	69.85	38.10	50.80
		<i>0.752</i>	<i>0.625</i>				<i>2.506</i>	<i>2.750</i>	<i>1.500</i>	<i>2.000</i>
# P-L9-022-191FF-CZ-N-159	22	19.1	15.875	Zinc Plated Steel	No Locking	Double Flanged	66.67	73.03	38.10	50.80
		<i>0.752</i>	<i>0.625</i>				<i>2.625</i>	<i>2.875</i>	<i>1.500</i>	<i>2.000</i>
# P-L9-024-191FF-CZ-N-159	24	19.1	15.875	Zinc Plated Steel	No Locking	Double Flanged	72.73	78.59	38.10	57.15
		<i>0.752</i>	<i>0.625</i>				<i>2.863</i>	<i>3.094</i>	<i>1.500</i>	<i>2.250</i>
# P-L9-026-191FF-CZ-N-159	26	19.1	15.875	Zinc Plated Steel	No Locking	Double Flanged	78.79	84.58	38.10	57.15
		<i>0.752</i>	<i>0.625</i>				<i>3.102</i>	<i>3.330</i>	<i>1.500</i>	<i>2.250</i>
# P-L9-028-191FF-CZ-N-159	28	19.1	15.875	Zinc Plated Steel	No Locking	Double Flanged	84.86	90.58	38.10	57.15
		<i>0.752</i>	<i>0.625</i>				<i>3.341</i>	<i>3.566</i>	<i>1.500</i>	<i>2.250</i>
# P-L9-030-191FF-CZ-N-159	30	19.1	15.875	Zinc Plated Steel	No Locking	Double Flanged	90.92	96.52	38.10	57.15
		<i>0.752</i>	<i>0.625</i>				<i>3.580</i>	<i>3.800</i>	<i>1.500</i>	<i>2.250</i>
# P-L9-032-191FF-CZ-N-159	32	19.1	15.875	Zinc Plated Steel	No Locking	Double Flanged	96.98	102.72	38.10	66.68
		<i>0.752</i>	<i>0.625</i>				<i>3.818</i>	<i>4.044</i>	<i>1.500</i>	<i>2.625</i>

Indicates item not stocked at time of printing - Please enquire for lead time

Page 5 of 6

E&OE Pricing and all details subject to change without notice - Copyright Miniature Bearings Australia Pty Ltd

MBA Size Listings are a guide to sizes only and must not be solely relied on for critical design information.

Pulleys - Timing - 9.525mm Pitch - L - 19.05mm Wide - Steel- Zinc Plated

Part Number	Teeth	Max Belt Width mm	Bore (d) mm	Material	Locking Type	Type (See Diagram)	Pitch Diameter (PD) mm	Flange Diameter (FD) mm	Overall Length (OL) mm	Hub Diameter (HD) mm
# P-L9-036-191FF-CZ-N-159	36	19.1 <i>inches</i> 0.752	15.875 <i>inches</i> 0.625	Zinc Plated Steel	No Locking	Double Flanged	109.10 <i>inches</i> 4.295	114.81 <i>inches</i> 4.520	38.10 <i>inches</i> 1.500	88.90 <i>inches</i> 3.500
# P-L9-040-191FF-CZ-N-159	40	19.1 <i>inches</i> 0.752	15.875 <i>inches</i> 0.625	Zinc Plated Steel	No Locking	Double Flanged	121.22 <i>inches</i> 4.772	127.00 <i>inches</i> 5.000	38.10 <i>inches</i> 1.500	92.08 <i>inches</i> 3.625

Indicates item not stocked at time of printing - Please enquire for lead time

Page 6 of 6

E&OE Pricing and all details subject to change without notice - Copyright Miniature Bearings Australia Pty Ltd
MBA Size Listings are a guide to sizes only and must not be solely relied on for critical design information.

DISTRIBUTED BY

Distributed By:

