



Pulleys - U Groove - Idler - Steel - With Bearing

10/4/2018

Indicates item not stocked at time of printing - Please enquire for lead time

E&OE Pricing and all details subject to change without notice - Copyright Miniature Bearings Australia Pty Ltd

MBA Size Listings are a guide to sizes only and must not be solely relied on for critical design information.

Page 1 of 5

INFORMATION

Steel with Steel Ball Bearings

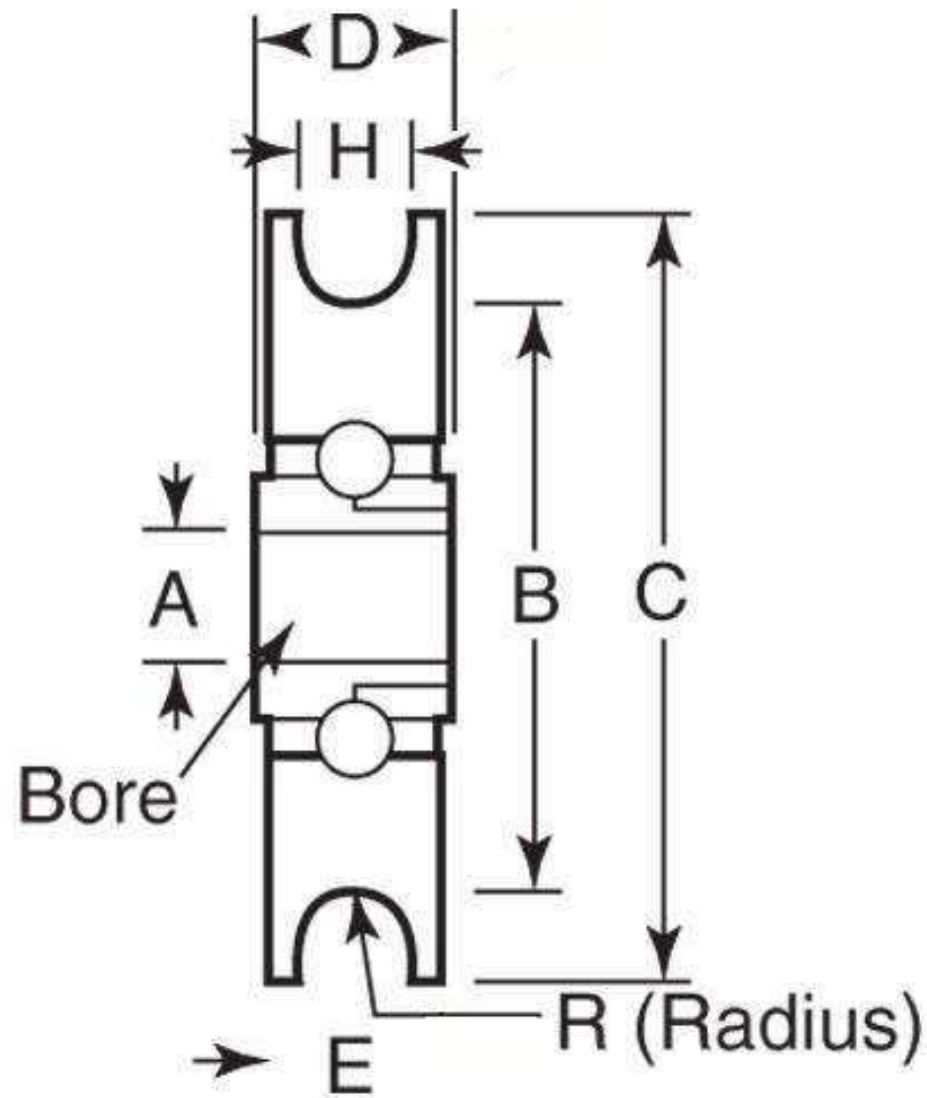
Use with round belts such as Rounthane or O-Rings

This catalogue to be read in conjunction with information at <http://www.minibearings.com.au//categories/orings/all/pics/>
<http://www.minibearings.com.au//categories/rounthane/all/pics/>

Indicates item not stocked at time of printing - Please enquire for lead time

E&OE Pricing and all details subject to change without notice - Copyright Miniature Bearings Australia Pty Ltd

MBA Size Listings are a guide to sizes only and must not be solely relied on for critical design information.



Indicates item not stocked at time of printing - Please enquire for lead time

E&OE Pricing and all details subject to change without notice - Copyright Miniature Bearings Australia Pty Ltd

MBA Size Listings are a guide to sizes only and must not be solely relied on for critical design information.

Pulleys - U Groove - Idler - Steel - With Bearing

| Part Number | Max. Cable Diameter mm | Outside Diameter (C) mm | Bore (A) mm | Groove Radius (R) mm | Bearing Type | Dia. to Base of Groove (B) mm | Duty Type | Material | Overall Width (D) mm | Body Width mm |
|-----------------------|------------------------|-------------------------|---------------|----------------------|-----------------------------|-------------------------------|--------------------------|----------|----------------------|---------------|
| | <i>inches</i> | <i>inches</i> | <i>inches</i> | <i>inches</i> | | <i>inches</i> | | | <i>inches</i> | <i>inches</i> |
| PUI012-0127-032-ZB-RS | 1.19 | 12.70 | 3.175 | 0.64 | Ball - Precision - Shielded | 9.53 | Heavy - hardened Raceway | Steel | 4.76 | 3.97 |
| | <i>0.047</i> | <i>0.500</i> | <i>0.125</i> | <i>0.025</i> | | <i>0.375</i> | | | <i>0.187</i> | <i>0.156</i> |
| PUI012-0127-032-ZB | 1.19 | 12.70 | 3.175 | 0.64 | Ball - Unground - Open | 9.53 | Heavy - hardened Raceway | Steel | 4.76 | 3.97 |
| | <i>0.047</i> | <i>0.500</i> | <i>0.125</i> | <i>0.025</i> | | <i>0.375</i> | | | <i>0.187</i> | <i>0.156</i> |
| PUI024-0270-048-ZB-RS | 2.38 | 26.99 | 4.763 | 1.32 | Ball - Precision - Shielded | 22.23 | Heavy - hardened Raceway | Steel | 7.14 | 6.35 |
| | <i>0.094</i> | <i>1.063</i> | <i>0.188</i> | <i>0.052</i> | | <i>0.875</i> | | | <i>0.281</i> | <i>0.250</i> |
| PUI032-0254-048-ZB-RS | 3.18 | 25.40 | 4.763 | 1.57 | Ball - Precision - Shielded | 19.05 | Heavy - hardened Raceway | Steel | 9.53 | 7.94 |
| | <i>0.125</i> | <i>1.000</i> | <i>0.188</i> | <i>0.062</i> | | <i>0.750</i> | | | <i>0.375</i> | <i>0.313</i> |
| # PUI032-0254-048-ZB | 3.18 | 25.40 | 4.763 | 1.57 | Ball - Unground - Open | 19.05 | Heavy - hardened Raceway | Steel | 9.53 | 7.94 |
| | <i>0.125</i> | <i>1.000</i> | <i>0.188</i> | <i>0.062</i> | | <i>0.750</i> | | | <i>0.375</i> | <i>0.313</i> |
| PUI048-0318-064-ZB-RS | 4.76 | 31.75 | 6.350 | 2.36 | Ball - Precision - Shielded | 22.23 | Heavy - hardened Raceway | Steel | 11.10 | 9.53 |
| | <i>0.187</i> | <i>1.250</i> | <i>0.250</i> | <i>0.093</i> | | <i>0.875</i> | | | <i>0.437</i> | <i>0.375</i> |
| PUI048-0318-064-ZB | 4.76 | 31.75 | 6.350 | 2.36 | Ball - Unground - Open | 22.23 | Heavy - hardened Raceway | Steel | 11.10 | 9.53 |
| | <i>0.187</i> | <i>1.250</i> | <i>0.250</i> | <i>0.093</i> | | <i>0.875</i> | | | <i>0.437</i> | <i>0.375</i> |

Indicates item not stocked at time of printing - Please enquire for lead time

Page 4 of 5

E&OE Pricing and all details subject to change without notice - Copyright Miniature Bearings Australia Pty Ltd
MBA Size Listings are a guide to sizes only and must not be solely relied on for critical design information.

Pulleys - U Groove - Idler - Steel - With Bearing

| Part Number | Max. Cable Diameter mm | Outside Diameter (C) mm | Bore (A) mm | Groove Radius (R) mm | Bearing Type | Dia. to Base of Groove (B) mm | Duty Type | Material | Overall Width (D) mm | Body Width mm |
|--------------------|------------------------|-------------------------|---------------|----------------------|------------------------------|-------------------------------|--------------------------------|----------|----------------------|---------------|
| | <i>inches</i> | <i>inches</i> | <i>inches</i> | <i>inches</i> | | <i>inches</i> | | | <i>inches</i> | <i>inches</i> |
| PUI064-0445-095-ZB | 6.35 | 44.450 | 9.525 | 3.175 | Ball - Unground - Open | 31.75 | Heavy - hardened Raceway | Steel | 12.7 | 11.1 |
| | <i>0.250</i> | <i>1.750</i> | <i>0.375</i> | <i>0.125</i> | | <i>1.250</i> | | | <i>0.500</i> | <i>0.437</i> |
| PUI064-0508-095-ZB | 6.35 | 50.800 | 9.525 | 3.175 | Ball - Unground - Open | 38.10 | Heavy - hardened Raceway | Steel | 12.7 | 11.1 |
| | <i>0.250</i> | <i>2.000</i> | <i>0.375</i> | <i>0.125</i> | | <i>1.500</i> | | | <i>0.500</i> | <i>0.437</i> |

Indicates item not stocked at time of printing - Please enquire for lead time

Page 5 of 5

E&OE Pricing and all details subject to change without notice - Copyright Miniature Bearings Australia Pty Ltd
MBA Size Listings are a guide to sizes only and must not be solely relied on for critical design information.

DISTRIBUTED BY

Distributed By:

