



# Rail Systems - Miniature Profile

10/4/2018

# Indicates item not stocked at time of printing - Please enquire for lead time

E&OE Pricing and all details subject to change without notice - Copyright Miniature Bearings Australia Pty Ltd

MBA Size Listings are a guide to sizes only and must not be solely relied on for critical design information.

## INFORMATION

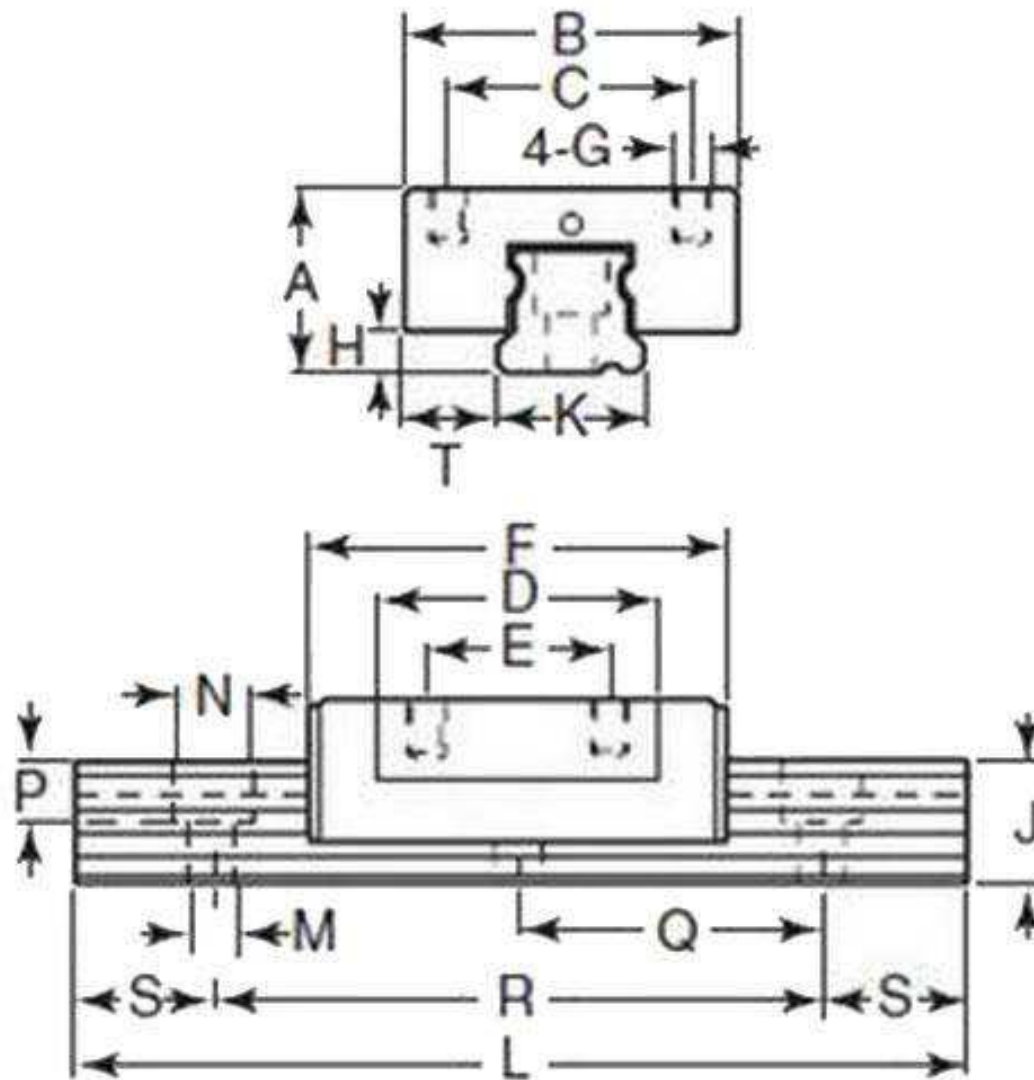
Ideal for precision applications where mounting space is limited

Gothic arch grooves at raceway contacts enables slide to sustain loads & movement from any direction.  
Made from stainless steel or plastic for corrosion resistance. End caps have oil holes for easy relubrication.

# Indicates item not stocked at time of printing - Please enquire for lead time

E&OE Pricing and all details subject to change without notice - Copyright Miniature Bearings Australia Pty Ltd

MBA Size Listings are a guide to sizes only and must not be solely relied on for critical design information.



# Indicates item not stocked at time of printing - Please enquire for lead time

E&OE Pricing and all details subject to change without notice - Copyright Miniature Bearings Australia Pty Ltd

MBA Size Listings are a guide to sizes only and must not be solely relied on for critical design information.

## Rail Systems - Miniature Profile

Part Number	Load Kg	No. Of Carriages	Rail Length (L) mm	Carriage Length (F/D) mm	Rail Dimensions (J/K) mm	Carriage Dimensions (A/B) mm	P mm	Rail Bolt Distance (R) mm	Rail Bolt Distance (Q) mm	Carriage Bolt Distance (C) mm
			<i>inches</i>	<i>inches</i>	<i>inches</i>	<i>inches</i>	<i>inches</i>	<i>inches</i>	<i>inches</i>	<i>inches</i>
# SKF0RS	188.69	1.00	80.00 <i>3.150</i>	32.00 / 21.50	6.50 / 9.00	10.00 / 20.00	3.50 <i>0.138</i>	60.00 <i>2.362</i>	20.00 <i>0.787</i>	15.00 <i>0.591</i>
# SKF1RS	188.69	1.00	110.00 <i>4.331</i>	32.00 / 21.50	6.50 / 9.00	10.00 / 20.00	3.50 <i>0.138</i>	80.00 <i>3.150</i>	20.00 <i>0.787</i>	15.00 <i>0.591</i>
# SKF3RS	188.69	1.00	140.00 <i>5.512</i>	32.00 / 21.50	6.50 / 9.00	10.00 / 20.00	3.50 <i>0.138</i>	120.00 <i>4.724</i>	20.00 <i>0.787</i>	15.00 <i>0.591</i>
# SKF5RS	188.69	1.00	170.00 <i>6.693</i>	32.00 / 21.50	6.50 / 9.00	10.00 / 20.00	3.50 <i>0.138</i>	140.00 <i>5.512</i>	20.00 <i>0.787</i>	15.00 <i>0.591</i>
# SKF2RS	188.69	2.00	110.00 <i>4.331</i>	32.00 / 21.50	6.50 / 9.00	10.00 / 20.00	3.50 <i>0.138</i>	80.00 <i>3.150</i>	20.00 <i>0.787</i>	15.00 <i>0.591</i>
# SKF4RS	188.69	2.00	140.00 <i>5.512</i>	32.00 / 21.50	6.50 / 9.00	10.00 / 20.00	3.50 <i>0.138</i>	120.00 <i>4.724</i>	20.00 <i>0.787</i>	15.00 <i>0.591</i>
# SKF6RS	188.69	2.00	170.00 <i>6.693</i>	32.00 / 21.50	6.50 / 9.00	10.00 / 20.00	3.50 <i>0.138</i>	140.00 <i>5.512</i>	20.00 <i>0.787</i>	15.00 <i>0.591</i>
# SKF7RS	188.69	2.00	200.00 <i>7.874</i>	32.00 / 21.50	6.50 / 9.00	10.00 / 20.00	3.50 <i>0.138</i>	180.00 <i>7.087</i>	20.00 <i>0.787</i>	15.00 <i>0.591</i>
# SKF8RS	188.69	2.00	260.00 <i>10.236</i>	32.00 / 21.50	6.50 / 9.00	10.00 / 20.00	3.50 <i>0.138</i>	240.00 <i>9.449</i>	20.00 <i>0.787</i>	15.00 <i>0.591</i>
# SKF9RS	188.69	2.00	290.00 <i>11.417</i>	32.00 / 21.50	6.50 / 9.00	10.00 / 20.00	3.50 <i>0.138</i>	260.00 <i>10.236</i>	20.00 <i>0.787</i>	15.00 <i>0.591</i>

# Indicates item not stocked at time of printing - Please enquire for lead time

Page 4 of 6

E&OE Pricing and all details subject to change without notice - Copyright Miniature Bearings Australia Pty Ltd  
MBA Size Listings are a guide to sizes only and must not be solely relied on for critical design information.

## Rail Systems - Miniature Profile

Part Number	Load Kg	No. Of Carriages	Rail Length (L) mm	Carriage Length (F/D) mm	Rail Dimensions (J/K) mm	Carriage Dimensions (A/B) mm	P mm	Rail Bolt Distance (R) mm	Rail Bolt Distance (Q) mm	Carriage Bolt Distance (C) mm
			<i>inches</i>	<i>inches</i>	<i>inches</i>	<i>inches</i>	<i>inches</i>	<i>inches</i>	<i>inches</i>	<i>inches</i>
# SKF10RS	259.91	1.00	110.00 <i>4.331</i>	36.00 / 23.00	8.80 / 12.00	13.00 / 27.00	4.50 <i>0.177</i>	75.00 <i>2.953</i>	25.00 <i>0.984</i>	27.00 <i>1.063</i>
# SKF11RS	259.91	1.00	150.00 <i>5.906</i>	36.00 / 23.00	8.80 / 12.00	13.00 / 27.00	4.50 <i>0.177</i>	125.00 <i>4.921</i>	25.00 <i>0.984</i>	27.00 <i>1.063</i>
# SKF13RS	259.91	1.00	190.00 <i>7.480</i>	36.00 / 23.00	8.80 / 12.00	13.00 / 27.00	4.50 <i>0.177</i>	150.00 <i>5.906</i>	25.00 <i>0.984</i>	27.00 <i>1.063</i>
# SKF15RS	259.91	1.00	230.00 <i>9.055</i>	36.00 / 23.00	8.80 / 12.00	13.00 / 27.00	4.50 <i>0.177</i>	200.00 <i>7.874</i>	25.00 <i>0.984</i>	27.00 <i>1.063</i>
# SKF12RS	259.91	2.00	150.00 <i>5.906</i>	36.00 / 23.00	8.80 / 12.00	13.00 / 27.00	4.50 <i>0.177</i>	125.00 <i>4.921</i>	25.00 <i>0.984</i>	27.00 <i>1.063</i>
# SKF14RS	259.91	2.00	190.00 <i>7.480</i>	36.00 / 23.00	8.80 / 12.00	13.00 / 27.00	4.50 <i>0.177</i>	150.00 <i>5.906</i>	25.00 <i>0.984</i>	27.00 <i>1.063</i>
# SKF16RS	259.91	2.00	230.00 <i>9.055</i>	36.00 / 23.00	8.80 / 12.00	13.00 / 27.00	4.50 <i>0.177</i>	200.00 <i>7.874</i>	25.00 <i>0.984</i>	27.00 <i>1.063</i>
# SKF17RS	259.91	2.00	310.00 <i>12.205</i>	36.00 / 23.00	8.80 / 12.00	13.00 / 27.00	4.50 <i>0.177</i>	275.00 <i>10.827</i>	25.00 <i>0.984</i>	27.00 <i>1.063</i>
# SKF18RS	259.91	2.00	390.00 <i>15.354</i>	36.00 / 23.00	8.80 / 12.00	13.00 / 27.00	4.50 <i>0.177</i>	350.00 <i>13.780</i>	25.00 <i>0.984</i>	27.00 <i>1.063</i>
# SKF19RS	259.91	2.00	470.00 <i>18.504</i>	36.00 / 23.00	8.80 / 12.00	13.00 / 27.00	4.50 <i>0.177</i>	450.00 <i>17.717</i>	25.00 <i>0.984</i>	27.00 <i>1.063</i>

# Indicates item not stocked at time of printing - Please enquire for lead time

Page 5 of 6

E&OE Pricing and all details subject to change without notice - Copyright Miniature Bearings Australia Pty Ltd  
MBA Size Listings are a guide to sizes only and must not be solely relied on for critical design information.

## Rail Systems - Miniature Profile

Part Number	Load Kg	No. Of Carriages	Rail Length (L) mm	Carriage Length (F/D) mm	Rail Dimensions (J/K) mm	Carriage Dimensions (A/B) mm	P mm	Rail Bolt Distance (R) mm	Rail Bolt Distance (Q) mm	Carriage Bolt Distance (C) mm
			<i>inches</i>	<i>inches</i>	<i>inches</i>	<i>inches</i>	<i>inches</i>	<i>inches</i>	<i>inches</i>	<i>inches</i>
# SKF20RS	336.57	1.00	110.00 <i>4.331</i>	45.50 / 32.50	8.80 / 24.00	14.00 / 40.00	4.50 <i>0.177</i>	80.00 <i>3.150</i>	45.00 <i>1.772</i>	40.00 <i>1.575</i>
# SKF21RS	336.57	1.00	150.00 <i>5.906</i>	45.50 / 32.50	8.80 / 24.00	14.00 / 40.00	4.50 <i>0.177</i>	120.00 <i>4.724</i>	45.00 <i>1.772</i>	40.00 <i>1.575</i>
# SKF23RS	336.57	1.00	190.00 <i>7.480</i>	45.50 / 32.50	8.80 / 24.00	14.00 / 40.00	4.50 <i>0.177</i>	160.00 <i>6.299</i>	45.00 <i>1.772</i>	40.00 <i>1.575</i>
# SKF25RS	336.57	1.00	230.00 <i>9.055</i>	45.50 / 32.50	8.80 / 24.00	14.00 / 40.00	4.50 <i>0.177</i>	200.00 <i>7.874</i>	45.00 <i>1.772</i>	40.00 <i>1.575</i>
# SKF222RS	336.57	2.00	150.00 <i>5.906</i>	45.50 / 32.50	8.80 / 24.00	14.00 / 40.00	4.50 <i>0.177</i>	120.00 <i>4.724</i>	45.00 <i>1.772</i>	40.00 <i>1.575</i>
# SKF24RS	336.57	2.00	190.00 <i>7.480</i>	45.50 / 32.50	8.80 / 24.00	14.00 / 40.00	4.50 <i>0.177</i>	160.00 <i>6.299</i>	45.00 <i>1.772</i>	40.00 <i>1.575</i>
# SKF26RS	336.57	2.00	230.00 <i>9.055</i>	45.50 / 32.50	8.80 / 24.00	14.00 / 40.00	4.50 <i>0.177</i>	200.00 <i>7.874</i>	45.00 <i>1.772</i>	40.00 <i>1.575</i>
# SKF27RS	336.57	2.00	310.00 <i>12.205</i>	45.50 / 32.50	8.80 / 24.00	14.00 / 40.00	4.50 <i>0.177</i>	280.00 <i>11.024</i>	45.00 <i>1.772</i>	40.00 <i>1.575</i>
# SKF28RS	336.57	2.00	390.00 <i>15.354</i>	45.50 / 32.50	8.80 / 24.00	14.00 / 40.00	4.50 <i>0.177</i>	340.00 <i>13.386</i>	45.00 <i>1.772</i>	40.00 <i>1.575</i>
# SKF29RS	336.57	2.00	470.00 <i>18.504</i>	45.50 / 32.50	8.80 / 24.00	14.00 / 40.00	4.50 <i>0.177</i>	440.00 <i>17.323</i>	45.00 <i>1.772</i>	40.00 <i>1.575</i>

# Indicates item not stocked at time of printing - Please enquire for lead time

Page 6 of 6

E&OE Pricing and all details subject to change without notice - Copyright Miniature Bearings Australia Pty Ltd  
MBA Size Listings are a guide to sizes only and must not be solely relied on for critical design information.

DISTRIBUTED BY

Distributed By:

