



Rail Systems - Type 2 - Linear - Precision - Carriage - Chrome - Standard

10/4/2018

Indicates item not stocked at time of printing - Please enquire for lead time

E&OE Pricing and all details subject to change without notice - Copyright Miniature Bearings Australia Pty Ltd

MBA Size Listings are a guide to sizes only and must not be solely relied on for critical design information.

INFORMATION

Match with rail by size column 1. Thomson 500 Series provide long life, exceptional rigidity, high dynamic and static load capabilities in all directions.

Accommodates high moment loads and maintains high running accuracy. Improved machine accuracies and rigidity resulting in reduced vibration and extended machine and tool life.

Low drag longitudinal seals protect the the balls and ball path from contamination.

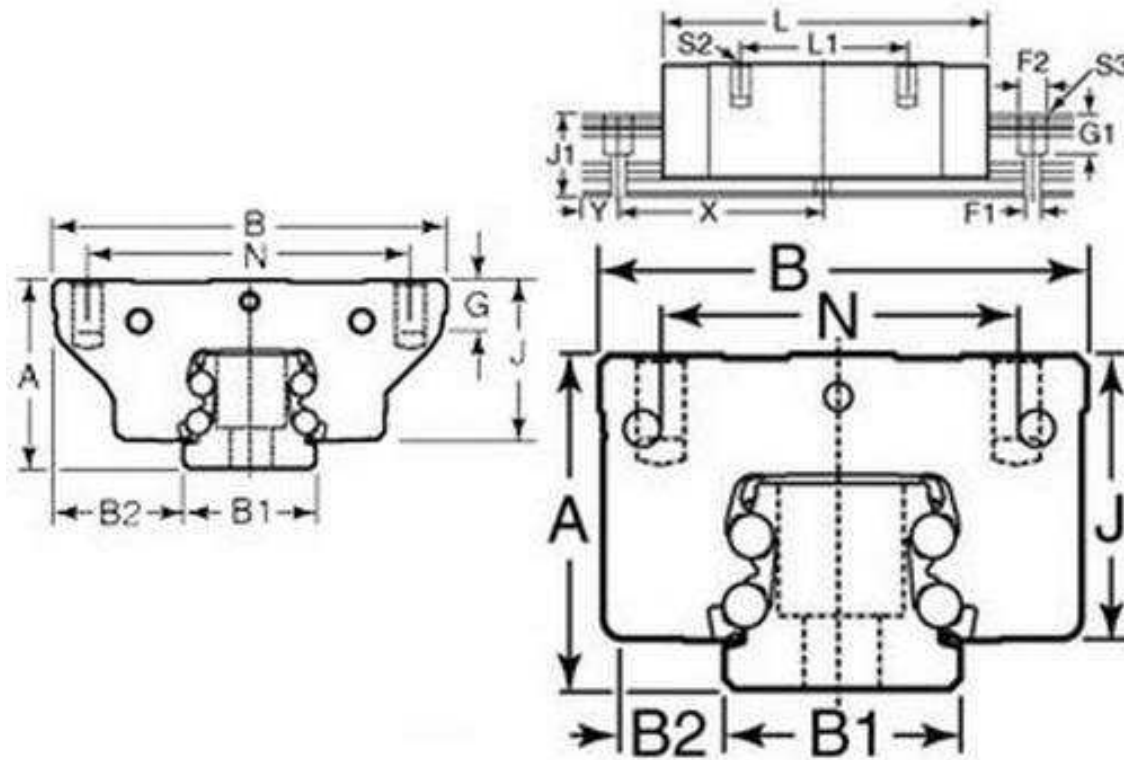
Thin dense chrome

This catalogue to be read in conjunction with information at
<http://www.minibearings.com.au//partslist/railsystemstype3linearprecisionrailschromecoated/>

Indicates item not stocked at time of printing - Please enquire for lead time

E&OE Pricing and all details subject to change without notice - Copyright Miniature Bearings Australia Pty Ltd

MBA Size Listings are a guide to sizes only and must not be solely relied on for critical design information.



Indicates item not stocked at time of printing - Please enquire for lead time

E&OE Pricing and all details subject to change without notice - Copyright Miniature Bearings Australia Pty Ltd

MBA Size Listings are a guide to sizes only and must not be solely relied on for critical design information.

Rail Systems - Type 2 - Linear - Precision - Carriage - Chrome - Standard

Part Number	Size	Height (A) mm	Width (B) mm	Rail Width (B1) mm	B2 mm	Bolt Centres Width (N) mm	Carriage Height (J) mm	Bolt Depth (G) mm	Length (L) mm	Bolt Centres Length (L1) mm
		<i>inches</i>	<i>inches</i>	<i>inches</i>	<i>inches</i>	<i>inches</i>	<i>inches</i>	<i>inches</i>	<i>inches</i>	<i>inches</i>
# TLM-3096RS	15.000	24.000 <i>0.945</i>	47.000 <i>1.850</i>	15.000 <i>0.591</i>	16.000 <i>0.630</i>	38.000 <i>1.496</i>	20.200 <i>0.795</i>	7.000 <i>0.276</i>	59.800 <i>2.354</i>	30.000 <i>1.181</i>
# TLM-3097RS	20.000	30.000 <i>1.181</i>	63.000 <i>2.480</i>	20.000 <i>0.787</i>	21.500 <i>0.846</i>	53.000 <i>2.087</i>	25.500 <i>1.004</i>	8.000 <i>0.315</i>	75.500 <i>2.972</i>	40.000 <i>1.575</i>
# TLM-3098RS	25.000	36.000 <i>1.417</i>	70.000 <i>2.756</i>	23.000 <i>0.906</i>	23.500 <i>0.925</i>	57.000 <i>2.244</i>	30.500 <i>1.201</i>	9.000 <i>0.354</i>	89.300 <i>3.516</i>	45.000 <i>1.772</i>
# TLM-3099RS	30.000	42.000 <i>1.654</i>	90.000 <i>3.543</i>	28.000 <i>1.102</i>	31.000 <i>1.220</i>	72.000 <i>2.835</i>	35.900 <i>1.413</i>	12.000 <i>0.472</i>	103.000 <i>4.055</i>	52.000 <i>2.047</i>
# TLM-3192RS	35.000	48.000 <i>1.890</i>	100.000 <i>3.937</i>	34.000 <i>1.339</i>	33.000 <i>1.299</i>	82.000 <i>3.228</i>	41.000 <i>1.614</i>	12.000 <i>0.472</i>	118.000 <i>4.646</i>	62.000 <i>2.441</i>
# TLM-3100RS	45.000	60.000 <i>2.362</i>	120.000 <i>4.724</i>	45.000 <i>1.772</i>	37.500 <i>1.476</i>	100.000 <i>3.937</i>	50.800 <i>2.000</i>	15.000 <i>0.591</i>	145.000 <i>5.709</i>	80.000 <i>3.150</i>

Indicates item not stocked at time of printing - Please enquire for lead time

Page 4 of 4

E&OE Pricing and all details subject to change without notice - Copyright Miniature Bearings Australia Pty Ltd
MBA Size Listings are a guide to sizes only and must not be solely relied on for critical design information.

DISTRIBUTED BY

Distributed By:

