



# Rail Systems - Type 3 - Linear - Precision - Rails - Carbon Steel

10/4/2018

# Indicates item not stocked at time of printing - Please enquire for lead time

E&OE Pricing and all details subject to change without notice - Copyright Miniature Bearings Australia Pty Ltd

MBA Size Listings are a guide to sizes only and must not be solely relied on for critical design information.

Page 1 of 8

## INFORMATION

Match with carriage by size column 1. Thomson 500 Series provide long life, exceptional rigidity, high dynamic and static load capabilities in all directions.

Accommodates high moment loads and maintains high running accuracy. Improved machine accuracies and rigidity resulting in reduced vibration and extended machine and tool life.

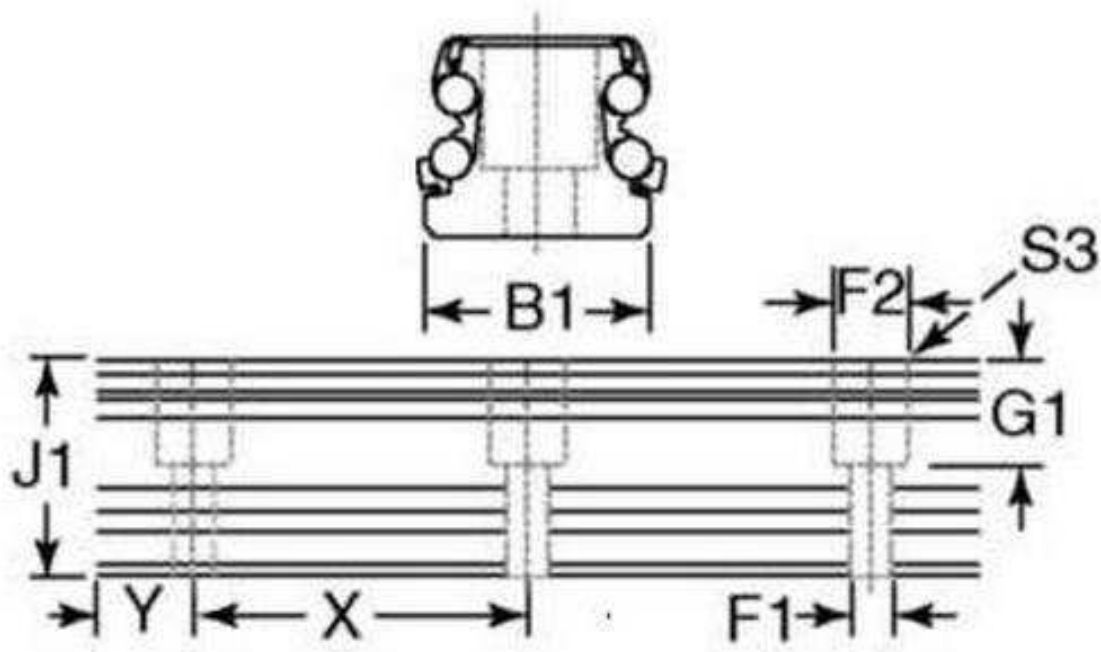
Rails are subjected to multiple straightening processes during and after grinding of the ball paths to ensure straight and accurate rails.

This catalogue to be read in conjunction with information at  
<http://www.minibearings.com.au/partslist/railsystemstype3linearprecisioncarriagecarbonsteelnarrow/>  
<http://www.minibearings.com.au/partslist/railsystemstype3linearprecisioncarriagecarbonsteelstandard/>

# Indicates item not stocked at time of printing - Please enquire for lead time

E&OE Pricing and all details subject to change without notice - Copyright Miniature Bearings Australia Pty Ltd

MBA Size Listings are a guide to sizes only and must not be solely relied on for critical design information.



# Indicates item not stocked at time of printing - Please enquire for lead time

E&OE Pricing and all details subject to change without notice - Copyright Miniature Bearings Australia Pty Ltd

MBA Size Listings are a guide to sizes only and must not be solely relied on for critical design information.

## Rail Systems - Type 3 - Linear - Precision - Rails - Carbon Steel

Part Number	Size	Width (B1) mm	Length mm	Height (J1) mm	F1 mm	F2 mm	G1 mm	Screw Size (S3)	Hole Spacing (X) mm	Hole Spacing from End (Y) mm
		<i>inches</i>	<i>inches</i>	<i>inches</i>	<i>inches</i>	<i>inches</i>	<i>inches</i>		<i>inches</i>	<i>inches</i>
# TLM-3107RS	15	15.000 <i>0.591</i>	160 <i>6.299</i>	15.700 <i>0.618</i>	4.500 <i>0.177</i>	8.000 <i>0.315</i>	4.500 <i>0.177</i>	M4	60.000 <i>2.362</i>	20.000 <i>0.787</i>
# TLM-3108RS	15	15.000 <i>0.591</i>	220 <i>8.661</i>	15.700 <i>0.618</i>	4.500 <i>0.177</i>	8.000 <i>0.315</i>	4.500 <i>0.177</i>	M4	60.000 <i>2.362</i>	20.000 <i>0.787</i>
# TLM-3109RS	15	15.000 <i>0.591</i>	280 <i>11.024</i>	15.700 <i>0.618</i>	4.500 <i>0.177</i>	8.000 <i>0.315</i>	4.500 <i>0.177</i>	M4	60.000 <i>2.362</i>	20.000 <i>0.787</i>
# TLM-3110RS	15	15.000 <i>0.591</i>	460 <i>18.110</i>	15.700 <i>0.618</i>	4.500 <i>0.177</i>	8.000 <i>0.315</i>	4.500 <i>0.177</i>	M4	60.000 <i>2.362</i>	20.000 <i>0.787</i>
# TLM-3111RS	15	15.000 <i>0.591</i>	820 <i>32.283</i>	15.700 <i>0.618</i>	4.500 <i>0.177</i>	8.000 <i>0.315</i>	4.500 <i>0.177</i>	M4	60.000 <i>2.362</i>	20.000 <i>0.787</i>
# TLM-3112RS	20	20.000 <i>0.787</i>	160 <i>6.299</i>	19.000 <i>0.748</i>	5.800 <i>0.228</i>	10.000 <i>0.394</i>	6.500 <i>0.256</i>	M5	60.000 <i>2.362</i>	20.000 <i>0.787</i>
# TLM-3113RS	20	20.000 <i>0.787</i>	220 <i>8.661</i>	19.000 <i>0.748</i>	5.800 <i>0.228</i>	10.000 <i>0.394</i>	6.500 <i>0.256</i>	M5	60.000 <i>2.362</i>	20.000 <i>0.787</i>
# TLM-3114RS	20	20.000 <i>0.787</i>	280 <i>11.024</i>	19.000 <i>0.748</i>	5.800 <i>0.228</i>	10.000 <i>0.394</i>	6.500 <i>0.256</i>	M5	60.000 <i>2.362</i>	20.000 <i>0.787</i>
# TLM-3115RS	20	20.000 <i>0.787</i>	460 <i>18.110</i>	19.000 <i>0.748</i>	5.800 <i>0.228</i>	10.000 <i>0.394</i>	6.500 <i>0.256</i>	M5	60.000 <i>2.362</i>	20.000 <i>0.787</i>
# TLM-3116RS	20	20.000 <i>0.787</i>	820 <i>32.283</i>	19.000 <i>0.748</i>	5.800 <i>0.228</i>	10.000 <i>0.394</i>	6.500 <i>0.256</i>	M5	60.000 <i>2.362</i>	20.000 <i>0.787</i>

# Indicates item not stocked at time of printing - Please enquire for lead time

Page 4 of 8

E&OE Pricing and all details subject to change without notice - Copyright Miniature Bearings Australia Pty Ltd  
MBA Size Listings are a guide to sizes only and must not be solely relied on for critical design information.

## Rail Systems - Type 3 - Linear - Precision - Rails - Carbon Steel

Part Number	Size	Width (B1) mm	Length mm	Height (J1) mm	F1 mm	F2 mm	G1 mm	Screw Size (S3)	Hole Spacing (X) mm	Hole Spacing from End (Y) mm
		<i>inches</i>	<i>inches</i>	<i>inches</i>	<i>inches</i>	<i>inches</i>	<i>inches</i>		<i>inches</i>	<i>inches</i>
# TLM-3117RS	20	20.000 <i>0.787</i>	1240 <i>48.819</i>	19.000 <i>0.748</i>	5.800 <i>0.228</i>	10.000 <i>0.394</i>	6.500 <i>0.256</i>	M5	60.000 <i>2.362</i>	20.000 <i>0.787</i>
# TLM-3118RS	25	23.000 <i>0.906</i>	160 <i>6.299</i>	22.700 <i>0.894</i>	7.000 <i>0.276</i>	11.000 <i>0.433</i>	8.000 <i>0.315</i>	M6	60.000 <i>2.362</i>	20.000 <i>0.787</i>
# TLM-3119RS	25	23.000 <i>0.906</i>	220 <i>8.661</i>	22.700 <i>0.894</i>	7.000 <i>0.276</i>	11.000 <i>0.433</i>	8.000 <i>0.315</i>	M6	60.000 <i>2.362</i>	20.000 <i>0.787</i>
# TLM-3120RS	25	23.000 <i>0.906</i>	280 <i>11.024</i>	22.700 <i>0.894</i>	7.000 <i>0.276</i>	11.000 <i>0.433</i>	8.000 <i>0.315</i>	M6	60.000 <i>2.362</i>	20.000 <i>0.787</i>
# TLM-3121RS	25	23.000 <i>0.906</i>	460 <i>18.110</i>	22.700 <i>0.894</i>	7.000 <i>0.276</i>	11.000 <i>0.433</i>	8.000 <i>0.315</i>	M6	60.000 <i>2.362</i>	20.000 <i>0.787</i>
# TLM-3122RS	25	23.000 <i>0.906</i>	660 <i>25.984</i>	22.700 <i>0.894</i>	7.000 <i>0.276</i>	11.000 <i>0.433</i>	8.000 <i>0.315</i>	M6	60.000 <i>2.362</i>	20.000 <i>0.787</i>
# TLM-3123RS	25	23.000 <i>0.906</i>	820 <i>32.283</i>	22.700 <i>0.894</i>	7.000 <i>0.276</i>	11.000 <i>0.433</i>	8.000 <i>0.315</i>	M6	60.000 <i>2.362</i>	20.000 <i>0.787</i>
# TLM-3124RS	25	23.000 <i>0.906</i>	1240 <i>48.819</i>	22.700 <i>0.894</i>	7.000 <i>0.276</i>	11.000 <i>0.433</i>	8.000 <i>0.315</i>	M6	60.000 <i>2.362</i>	20.000 <i>0.787</i>
# TLM-3125RS	25	23.000 <i>0.906</i>	1600 <i>62.992</i>	22.700 <i>0.894</i>	7.000 <i>0.276</i>	11.000 <i>0.433</i>	8.000 <i>0.315</i>	M6	60.000 <i>2.362</i>	20.000 <i>0.787</i>
# TLM-3126RS	30	28.000 <i>1.102</i>	280 <i>11.024</i>	26.000 <i>1.024</i>	9.000 <i>0.354</i>	15.000 <i>0.591</i>	10.000 <i>0.394</i>	M7	80.000 <i>3.150</i>	20.000 <i>0.787</i>

# Indicates item not stocked at time of printing - Please enquire for lead time

Page 5 of 8

E&OE Pricing and all details subject to change without notice - Copyright Miniature Bearings Australia Pty Ltd  
MBA Size Listings are a guide to sizes only and must not be solely relied on for critical design information.

## Rail Systems - Type 3 - Linear - Precision - Rails - Carbon Steel

Part Number	Size	Width (B1) mm	Length mm	Height (J1) mm	F1 mm	F2 mm	G1 mm	Screw Size (S3)	Hole Spacing (X) mm	Hole Spacing from End (Y) mm
		<i>inches</i>	<i>inches</i>	<i>inches</i>	<i>inches</i>	<i>inches</i>	<i>inches</i>		<i>inches</i>	<i>inches</i>
# TLM-3127RS	30	28.000 <i>1.102</i>	440 <i>17.323</i>	26.000 <i>1.024</i>	9.000 <i>0.354</i>	15.000 <i>0.591</i>	10.000 <i>0.394</i>	M7	80.000 <i>3.150</i>	20.000 <i>0.787</i>
# TLM-3128RS	30	28.000 <i>1.102</i>	680 <i>26.772</i>	26.000 <i>1.024</i>	9.000 <i>0.354</i>	15.000 <i>0.591</i>	10.000 <i>0.394</i>	M7	80.000 <i>3.150</i>	20.000 <i>0.787</i>
# TLM-3129RS	30	28.000 <i>1.102</i>	840 <i>33.071</i>	26.000 <i>1.024</i>	9.000 <i>0.354</i>	15.000 <i>0.591</i>	10.000 <i>0.394</i>	M7	80.000 <i>3.150</i>	20.000 <i>0.787</i>
# TLM-3130RS	30	28.000 <i>1.102</i>	1240 <i>48.819</i>	26.000 <i>1.024</i>	9.000 <i>0.354</i>	15.000 <i>0.591</i>	10.000 <i>0.394</i>	M7	80.000 <i>3.150</i>	20.000 <i>0.787</i>
# TLM-3131RS	30	28.000 <i>1.102</i>	1640 <i>64.567</i>	26.000 <i>1.024</i>	9.000 <i>0.354</i>	15.000 <i>0.591</i>	10.000 <i>0.394</i>	M7	80.000 <i>3.150</i>	20.000 <i>0.787</i>
# TLM-3132RS	30	28.000 <i>1.102</i>	2040 <i>80.315</i>	26.000 <i>1.024</i>	9.000 <i>0.354</i>	15.000 <i>0.591</i>	10.000 <i>0.394</i>	M7	80.000 <i>3.150</i>	20.000 <i>0.787</i>
# TLM-3133RS	35	34.000 <i>1.339</i>	280 <i>11.024</i>	29.500 <i>1.161</i>	9.000 <i>0.354</i>	15.000 <i>0.591</i>	12.000 <i>0.472</i>	M8	80.000 <i>3.150</i>	20.000 <i>0.787</i>
# TLM-3134RS	35	34.000 <i>1.339</i>	440 <i>17.323</i>	29.500 <i>1.161</i>	9.000 <i>0.354</i>	15.000 <i>0.591</i>	12.000 <i>0.472</i>	M8	80.000 <i>3.150</i>	20.000 <i>0.787</i>
# TLM-3135RS	35	34.000 <i>1.339</i>	680 <i>26.772</i>	29.500 <i>1.161</i>	9.000 <i>0.354</i>	15.000 <i>0.591</i>	12.000 <i>0.472</i>	M8	80.000 <i>3.150</i>	20.000 <i>0.787</i>
# TLM-3136RS	35	34.000 <i>1.339</i>	840 <i>33.071</i>	29.500 <i>1.161</i>	9.000 <i>0.354</i>	15.000 <i>0.591</i>	12.000 <i>0.472</i>	M8	80.000 <i>3.150</i>	20.000 <i>0.787</i>

# Indicates item not stocked at time of printing - Please enquire for lead time

Page 6 of 8

E&OE Pricing and all details subject to change without notice - Copyright Miniature Bearings Australia Pty Ltd  
MBA Size Listings are a guide to sizes only and must not be solely relied on for critical design information.

## Rail Systems - Type 3 - Linear - Precision - Rails - Carbon Steel

Part Number	Size	Width (B1) mm	Length mm	Height (J1) mm	F1 mm	F2 mm	G1 mm	Screw Size (S3)	Hole Spacing (X) mm	Hole Spacing from End (Y) mm
		<i>inches</i>	<i>inches</i>	<i>inches</i>	<i>inches</i>	<i>inches</i>	<i>inches</i>		<i>inches</i>	<i>inches</i>
# TLM-3137RS	35	34.000 <i>1.339</i>	1240 <i>48.819</i>	29.500 <i>1.161</i>	9.000 <i>0.354</i>	15.000 <i>0.591</i>	12.000 <i>0.472</i>	M8	80.000 <i>3.150</i>	20.000 <i>0.787</i>
# TLM-3138RS	35	34.000 <i>1.339</i>	1640 <i>64.567</i>	29.500 <i>1.161</i>	9.000 <i>0.354</i>	15.000 <i>0.591</i>	12.000 <i>0.472</i>	M8	80.000 <i>3.150</i>	20.000 <i>0.787</i>
# TLM-3139RS	35	34.000 <i>1.339</i>	2040 <i>80.315</i>	29.500 <i>1.161</i>	9.000 <i>0.354</i>	15.000 <i>0.591</i>	12.000 <i>0.472</i>	M8	80.000 <i>3.150</i>	20.000 <i>0.787</i>
# TLM-3140RS	35	34.000 <i>1.339</i>	2520 <i>99.213</i>	29.500 <i>1.161</i>	9.000 <i>0.354</i>	15.000 <i>0.591</i>	12.000 <i>0.472</i>	M8	80.000 <i>3.150</i>	20.000 <i>0.787</i>
# TLM-3141RS	45	45.000 <i>1.772</i>	360 <i>14.173</i>	37.000 <i>1.457</i>	14.000 <i>0.551</i>	20.000 <i>0.787</i>	15.000 <i>0.591</i>	M12	105.000 <i>4.134</i>	20.000 <i>0.787</i>
# TLM-3142RS	45	45.000 <i>1.772</i>	570 <i>22.441</i>	37.000 <i>1.457</i>	14.000 <i>0.551</i>	20.000 <i>0.787</i>	15.000 <i>0.591</i>	M12	105.000 <i>4.134</i>	22.500 <i>0.886</i>
# TLM-3143RS	45	45.000 <i>1.772</i>	885 <i>34.843</i>	37.000 <i>1.457</i>	14.000 <i>0.551</i>	20.000 <i>0.787</i>	15.000 <i>0.591</i>	M12	105.000 <i>4.134</i>	22.500 <i>0.886</i>
# TLM-3144RS	45	45.000 <i>1.772</i>	1200 <i>47.244</i>	37.000 <i>1.457</i>	14.000 <i>0.551</i>	20.000 <i>0.787</i>	15.000 <i>0.591</i>	M12	105.000 <i>4.134</i>	22.500 <i>0.886</i>
# TLM-3145RS	45	45.000 <i>1.772</i>	1620 <i>63.780</i>	37.000 <i>1.457</i>	14.000 <i>0.551</i>	20.000 <i>0.787</i>	15.000 <i>0.591</i>	M12	105.000 <i>4.134</i>	22.500 <i>0.886</i>
# TLM-3146RS	45	45.000 <i>1.772</i>	2040 <i>80.315</i>	37.000 <i>1.457</i>	14.000 <i>0.551</i>	20.000 <i>0.787</i>	15.000 <i>0.591</i>	M12	105.000 <i>4.134</i>	22.500 <i>0.886</i>

# Indicates item not stocked at time of printing - Please enquire for lead time

Page 7 of 8

E&OE Pricing and all details subject to change without notice - Copyright Miniature Bearings Australia Pty Ltd  
MBA Size Listings are a guide to sizes only and must not be solely relied on for critical design information.

## Rail Systems - Type 3 - Linear - Precision - Rails - Carbon Steel

Part Number	Size	Width (B1) mm	Length mm	Height (J1) mm	F1 mm	F2 mm	G1 mm	Screw Size (S3)	Hole Spacing (X) mm	Hole Spacing from End (Y) mm
# TLM-3147RS	45	45.000	2460	37.000	14.000	20.000	15.000	M12	105.000	22.500
		<i>inches</i> 1.772	<i>inches</i> 96.850	<i>inches</i> 1.457	<i>inches</i> 0.551	<i>inches</i> 0.787	<i>inches</i> 0.591		<i>inches</i> 4.134	<i>inches</i> 0.886

# Indicates item not stocked at time of printing - Please enquire for lead time

E&OE Pricing and all details subject to change without notice - Copyright Miniature Bearings Australia Pty Ltd

MBA Size Listings are a guide to sizes only and must not be solely relied on for critical design information.



DISTRIBUTED BY

Distributed By:

