



# Redi-Rail - Rail

10/4/2018

# Indicates item not stocked at time of printing - Please enquire for lead time

E&OE Pricing and all details subject to change without notice - Copyright Miniature Bearings Australia Pty Ltd

MBA Size Listings are a guide to sizes only and must not be solely relied on for critical design information.

## INFORMATION

Match carriage and rail by rail width

Easy to use system can be installed into many applications including packaging, material handling, automation and assembly equipment.

A complete unit consists of a roller guide and rail (sold separately). The roller guide is made from 6061-T6 aluminium base with 3 rollers.

Rollers made from 52100 hardened steel, lubricated and sealed.

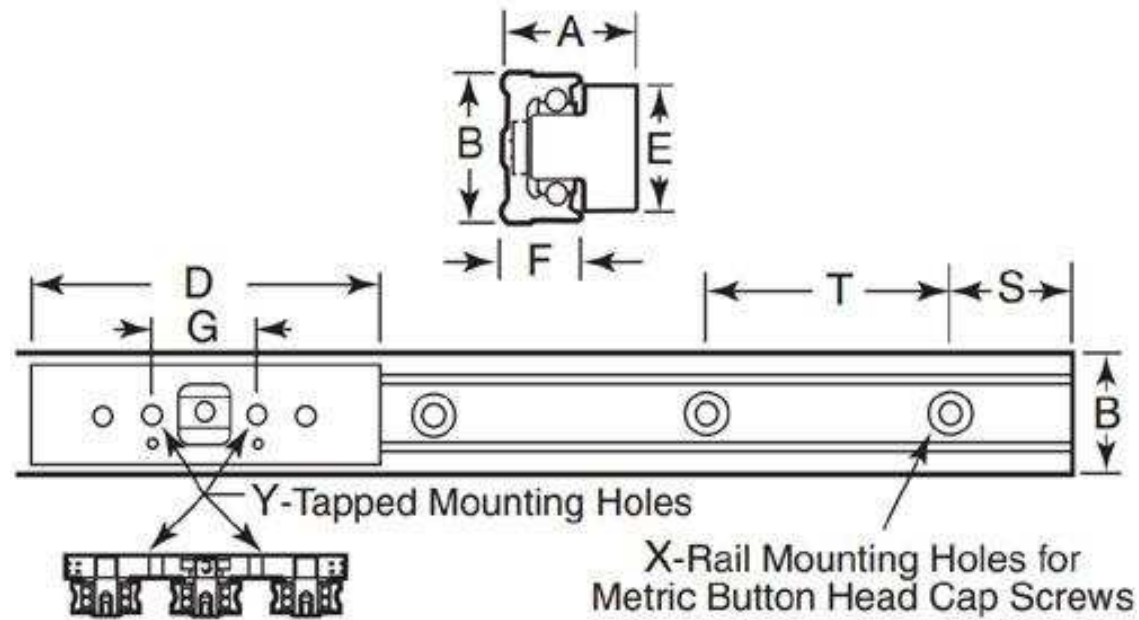
Rail made from 6061-T6 aluminium with hardened and ground steel raceways for the rollers to run on.

This catalogue to be read in conjunction with information at <http://www.minibearings.com.au//partslist/redirailrollerguides/>

# Indicates item not stocked at time of printing - Please enquire for lead time

E&OE Pricing and all details subject to change without notice - Copyright Miniature Bearings Australia Pty Ltd

MBA Size Listings are a guide to sizes only and must not be solely relied on for critical design information.



# Indicates item not stocked at time of printing - Please enquire for lead time

E&OE Pricing and all details subject to change without notice - Copyright Miniature Bearings Australia Pty Ltd

MBA Size Listings are a guide to sizes only and must not be solely relied on for critical design information.

## Redi-Rail - Rail

Part Number	Width (B) mm	Length mm	Height (F) mm	Bolt Distance from End (S) mm	Bolt Spacing (T) mm	Bolt Size (X)	No. Of Holes
	<i>inches</i>	<i>inches</i>	<i>inches</i>	<i>inches</i>	<i>inches</i>		
# PBC-700RS	30.000 <i>1.181</i>	480.000 <i>18.898</i>	16.000 <i>0.630</i>	30.000 <i>1.181</i>	60.000 <i>2.362</i>	M5	8.000
# PBC-705RS	30.000 <i>1.181</i>	720.000 <i>28.346</i>	16.000 <i>0.630</i>	30.000 <i>1.181</i>	60.000 <i>2.362</i>	M5	12.000
# PBC-710RS	30.000 <i>1.181</i>	960.000 <i>37.795</i>	16.000 <i>0.630</i>	30.000 <i>1.181</i>	60.000 <i>2.362</i>	M5	16.000
# PBC-650RS	33.528 <i>1.320</i>	304.800 <i>12.000</i>	15.240 <i>0.600</i>	19.050 <i>0.750</i>	88.900 <i>3.500</i>	No.10	4.000
# PBC-655RS	33.528 <i>1.320</i>	609.600 <i>24.000</i>	15.240 <i>0.600</i>	38.100 <i>1.500</i>	88.900 <i>3.500</i>	No.10	7.000
# PBC-660RS	33.528 <i>1.320</i>	914.400 <i>36.000</i>	15.240 <i>0.600</i>	12.700 <i>0.500</i>	88.900 <i>3.500</i>	No.10	11.000
# PBC-715RS	45.000 <i>1.772</i>	480.000 <i>18.898</i>	20.500 <i>0.807</i>	30.000 <i>1.181</i>	60.000 <i>2.362</i>	M6	8.000
# PBC-720RS	45.000 <i>1.772</i>	720.000 <i>28.346</i>	20.500 <i>0.807</i>	30.000 <i>1.181</i>	60.000 <i>2.362</i>	M6	12.000
# PBC-725RS	45.000 <i>1.772</i>	960.000 <i>37.795</i>	20.500 <i>0.807</i>	30.000 <i>1.181</i>	60.000 <i>2.362</i>	M6	16.000
# PBC-665RS	48.514 <i>1.910</i>	304.800 <i>12.000</i>	19.050 <i>0.750</i>	19.050 <i>0.750</i>	88.900 <i>3.500</i>	1/4 UNC	4.000

# Indicates item not stocked at time of printing - Please enquire for lead time

Page 4 of 5

E&OE Pricing and all details subject to change without notice - Copyright Miniature Bearings Australia Pty Ltd  
MBA Size Listings are a guide to sizes only and must not be solely relied on for critical design information.

## Redi-Rail - Rail

Part Number	Width (B) mm	Length mm	Height (F) mm	Bolt Distance from End (S) mm	Bolt Spacing (T) mm	Bolt Size (X)	No. Of Holes
	<i>inches</i>	<i>inches</i>	<i>inches</i>	<i>inches</i>	<i>inches</i>		
# PBC-670RS	48.514 <i>1.910</i>	609.600 <i>24.000</i>	19.050 <i>0.750</i>	38.100 <i>1.500</i>	88.900 <i>3.500</i>	1/4 UNC	7.000
# PBC-675RS	48.514 <i>1.910</i>	914.400 <i>36.000</i>	19.050 <i>0.750</i>	12.700 <i>0.500</i>	88.900 <i>3.500</i>	1/4 UNC	11.000
# PBC-730RS	65.000 <i>2.559</i>	480.000 <i>18.898</i>	27.000 <i>1.063</i>	40.000 <i>1.575</i>	80.000 <i>3.150</i>	M6	6.000
# PBC-735RS	65.000 <i>2.559</i>	720.000 <i>28.346</i>	27.000 <i>1.063</i>	40.000 <i>1.575</i>	80.000 <i>3.150</i>	M6	9.000
# PBC-740RS	65.000 <i>2.559</i>	960.000 <i>37.795</i>	27.000 <i>1.063</i>	40.000 <i>1.575</i>	80.000 <i>3.150</i>	M6	12.000
# PBC-680RS	76.200 <i>3.000</i>	304.800 <i>12.000</i>	26.416 <i>1.040</i>	19.050 <i>0.750</i>	88.900 <i>3.500</i>	1/4 UNC	4.000
# PBC-685RS	76.200 <i>3.000</i>	609.600 <i>24.000</i>	26.416 <i>1.040</i>	38.100 <i>1.500</i>	88.900 <i>3.500</i>	5/16 UNC	7.000
# PBC-690RS	76.200 <i>3.000</i>	914.400 <i>36.000</i>	26.416 <i>1.040</i>	12.700 <i>0.500</i>	88.900 <i>3.500</i>	5/16 UNC	11.000

# Indicates item not stocked at time of printing - Please enquire for lead time

Page 5 of 5

E&OE Pricing and all details subject to change without notice - Copyright Miniature Bearings Australia Pty Ltd  
MBA Size Listings are a guide to sizes only and must not be solely relied on for critical design information.

DISTRIBUTED BY

Distributed By:

