



Rings - Hoist - Heavy Duty - MIL-STD1365

10/4/2018

Indicates item not stocked at time of printing - Please enquire for lead time

E&OE Pricing and all details subject to change without notice - Copyright Miniature Bearings Australia Pty Ltd

MBA Size Listings are a guide to sizes only and must not be solely relied on for critical design information.

INFORMATION

Range of movement 180^o pivot and 360^o swivel. Safety factor 5 to 1. Meets MIL-STD1365 (11) or MIL-STD209C.
Certified heat treated alloy steel. Made from one piece forged steel.

100 percent magnetic particle inspected.

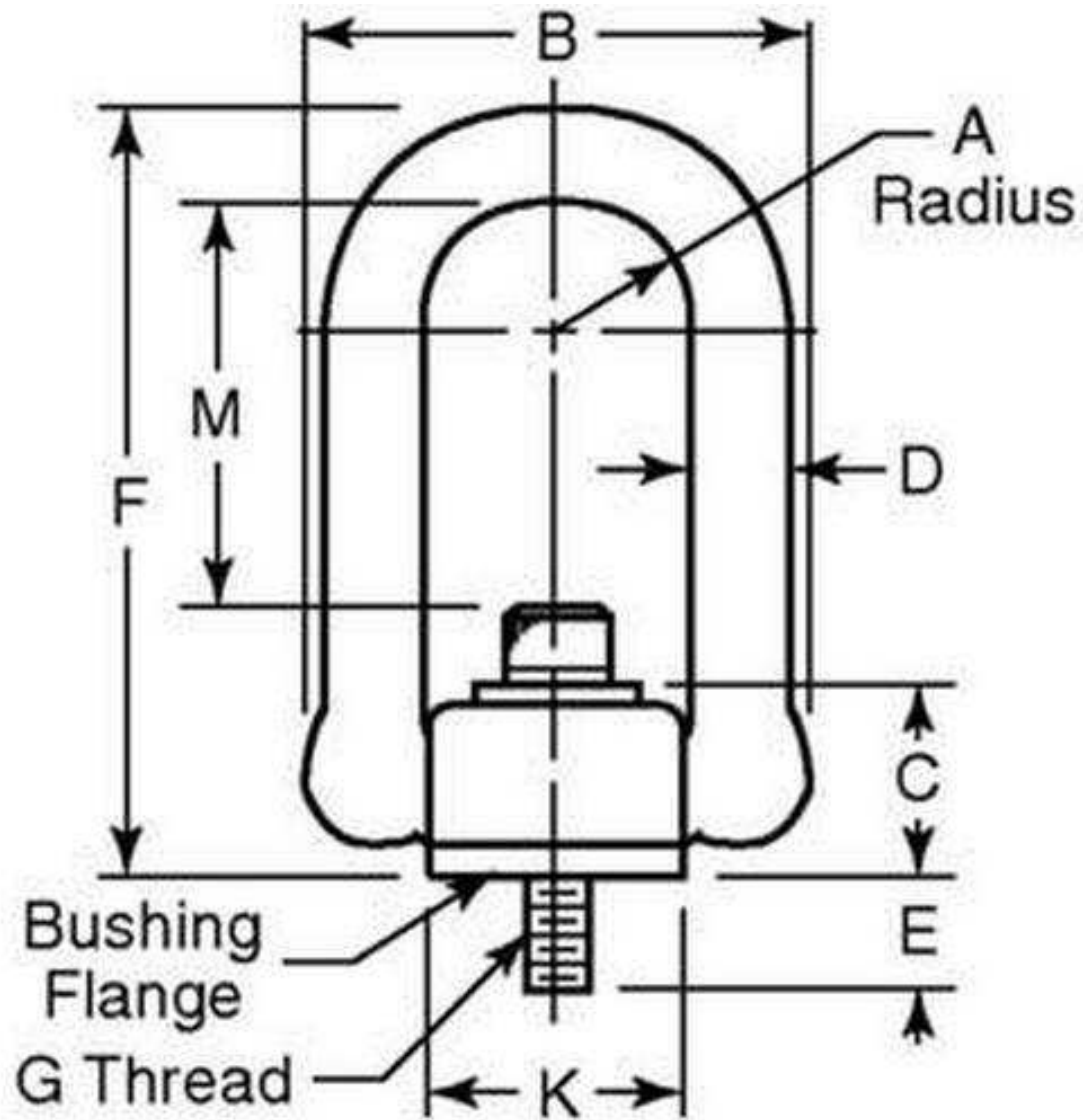
Meets USA OSHA standards

Black oxide finish.

Indicates item not stocked at time of printing - Please enquire for lead time

E&OE Pricing and all details subject to change without notice - Copyright Miniature Bearings Australia Pty Ltd

MBA Size Listings are a guide to sizes only and must not be solely relied on for critical design information.



Indicates item not stocked at time of printing - Please enquire for lead time

E&OE Pricing and all details subject to change without notice - Copyright Miniature Bearings Australia Pty Ltd
 MBA Size Listings are a guide to sizes only and must not be solely relied on for critical design information.

Rings - Hoist - Heavy Duty - MIL-STD1365

Part Number	Rated Load Kg	Radius (A) mm	Ring Width (B) mm	Body Height (C) mm	Ring Wire Width (D) mm	Thread Length (E) mm	Ring Length (F) mm	Thread	Body Width (K) mm	Torque Nm
		<i>inches</i>	<i>inches</i>	<i>inches</i>	<i>inches</i>	<i>inches</i>	<i>inches</i>		<i>inches</i>	
# SHR-33112RS	249	16.510 <i>0.650</i>	58.166 <i>2.290</i>	24.384 <i>0.960</i>	11.176 <i>0.440</i>	14.224 <i>0.560</i>	82.042 <i>3.230</i>	1/4-20 UNC	31.750 <i>1.250</i>	6.779
# SHR-34212RS	363	16.500 <i>0.650</i>	58.200 <i>2.291</i>	24.400 <i>0.961</i>	11.100 <i>0.437</i>	16.000 <i>0.630</i>	82.000 <i>3.228</i>	M8x1.25	31.800 <i>1.252</i>	9.491
# SHR-34214RS	363	16.500 <i>0.650</i>	58.200 <i>2.291</i>	24.400 <i>0.961</i>	11.100 <i>0.437</i>	21.000 <i>0.827</i>	82.000 <i>3.228</i>	M8x1.25	31.800 <i>1.252</i>	9.491
# SHR-33212RS	363	16.510 <i>0.650</i>	58.166 <i>2.290</i>	24.384 <i>0.960</i>	11.176 <i>0.440</i>	14.224 <i>0.560</i>	82.042 <i>3.230</i>	5/16-18 UNC	31.750 <i>1.250</i>	9.491
# SHR-34312RS	449	16.500 <i>0.650</i>	58.200 <i>2.291</i>	24.400 <i>0.961</i>	11.100 <i>0.437</i>	16.000 <i>0.630</i>	82.000 <i>3.228</i>	M10x1.50	31.800 <i>1.252</i>	16.270
# SHR-34314RS	449	16.500 <i>0.650</i>	58.200 <i>2.291</i>	24.400 <i>0.961</i>	11.100 <i>0.437</i>	26.000 <i>1.024</i>	82.000 <i>3.228</i>	M10x1.50	31.800 <i>1.252</i>	16.270
# SHR-33314RS	454	16.510 <i>0.650</i>	58.166 <i>2.290</i>	24.384 <i>0.960</i>	11.176 <i>0.440</i>	26.924 <i>1.060</i>	82.042 <i>3.230</i>	3/8-16 UNC	31.750 <i>1.250</i>	16.270
# SHR-33312RS	454	16.510 <i>0.650</i>	58.166 <i>2.290</i>	24.384 <i>0.960</i>	11.176 <i>0.440</i>	14.224 <i>0.560</i>	82.042 <i>3.230</i>	3/8-16 UNC	31.750 <i>1.250</i>	16.270
# SHR-33316RS	1021	16.510 <i>0.650</i>	58.166 <i>2.290</i>	24.384 <i>0.960</i>	11.176 <i>0.440</i>	26.924 <i>1.060</i>	82.042 <i>3.230</i>	1/2-13 UNC	31.750 <i>1.250</i>	33.895
# SHR-34515RS	1043	25.400 <i>1.000</i>	88.900 <i>3.500</i>	38.100 <i>1.500</i>	19.100 <i>0.752</i>	25.000 <i>0.984</i>	134.900 <i>5.311</i>	M12x1.75	48.000 <i>1.890</i>	37.963

Indicates item not stocked at time of printing - Please enquire for lead time

Page 4 of 7

E&OE Pricing and all details subject to change without notice - Copyright Miniature Bearings Australia Pty Ltd
MBA Size Listings are a guide to sizes only and must not be solely relied on for critical design information.

Rings - Hoist - Heavy Duty - MIL-STD1365

Part Number	Rated Load Kg	Radius (A) mm	Ring Width (B) mm	Body Height (C) mm	Ring Wire Width (D) mm	Thread Length (E) mm	Ring Length (F) mm	Thread	Body Width (K) mm	Torque Nm
		<i>inches</i>	<i>inches</i>	<i>inches</i>	<i>inches</i>	<i>inches</i>	<i>inches</i>		<i>inches</i>	
# SHR-34516RS	1043	25.400 <i>1.000</i>	88.900 <i>3.500</i>	38.100 <i>1.500</i>	19.100 <i>0.752</i>	32.000 <i>1.260</i>	134.900 <i>5.311</i>	M12x1.75	48.000 <i>1.890</i>	37.963
# SHR-33513RS	1134	25.400 <i>1.000</i>	88.900 <i>3.500</i>	38.100 <i>1.500</i>	19.050 <i>0.750</i>	19.050 <i>0.750</i>	174.498 <i>6.870</i>	1/2-13 UNC	48.006 <i>1.890</i>	37.963
# SHR-33515RS	1134	25.400 <i>1.000</i>	88.900 <i>3.500</i>	38.100 <i>1.500</i>	19.050 <i>0.750</i>	25.400 <i>1.000</i>	134.874 <i>5.310</i>	1/2-13 UNC	48.006 <i>1.890</i>	81.349
# SHR-33512RS	1134	25.400 <i>1.000</i>	88.900 <i>3.500</i>	38.100 <i>1.500</i>	19.050 <i>0.750</i>	19.050 <i>0.750</i>	134.874 <i>5.310</i>	1/2-13 UNC	48.006 <i>1.890</i>	37.963
# SHR-33516RS	1134	25.400 <i>1.000</i>	88.900 <i>3.500</i>	38.100 <i>1.500</i>	19.050 <i>0.750</i>	31.750 <i>1.250</i>	134.874 <i>5.310</i>	1/2-13 UNC	48.006 <i>1.890</i>	81.349
# SHR-33616RS	1814	25.400 <i>1.000</i>	88.900 <i>3.500</i>	38.100 <i>1.500</i>	19.050 <i>0.750</i>	31.750 <i>1.250</i>	174.498 <i>6.870</i>	5/8-11 UNC	48.006 <i>1.890</i>	135.582
# SHR-33612RS	1814	25.400 <i>1.000</i>	88.900 <i>3.500</i>	38.100 <i>1.500</i>	19.050 <i>0.750</i>	19.050 <i>0.750</i>	134.874 <i>5.310</i>	5/8-11 UNC	48.006 <i>1.890</i>	135.582
# SHR-33615RS	1814	25.400 <i>1.000</i>	88.900 <i>3.500</i>	38.100 <i>1.500</i>	19.050 <i>0.750</i>	31.750 <i>1.250</i>	134.874 <i>5.310</i>	5/8-11 UNC	48.006 <i>1.890</i>	135.582
# SHR-33614RS	1814	25.400 <i>1.000</i>	88.900 <i>3.500</i>	38.100 <i>1.500</i>	19.050 <i>0.750</i>	25.400 <i>1.000</i>	134.874 <i>5.310</i>	5/8-11 UNC	48.006 <i>1.890</i>	135.582
# SHR-34614RS	1860	25.400 <i>1.000</i>	88.900 <i>3.500</i>	38.100 <i>1.500</i>	19.100 <i>0.752</i>	25.000 <i>0.984</i>	134.900 <i>5.311</i>	M16x2.00	48.000 <i>1.890</i>	81.349

Indicates item not stocked at time of printing - Please enquire for lead time

Page 5 of 7

E&OE Pricing and all details subject to change without notice - Copyright Miniature Bearings Australia Pty Ltd
MBA Size Listings are a guide to sizes only and must not be solely relied on for critical design information.

Rings - Hoist - Heavy Duty - MIL-STD1365

Part Number	Rated Load Kg	Radius (A) mm	Ring Width (B) mm	Body Height (C) mm	Ring Wire Width (D) mm	Thread Length (E) mm	Ring Length (F) mm	Thread	Body Width (K) mm	Torque Nm
		<i>inches</i>	<i>inches</i>	<i>inches</i>	<i>inches</i>	<i>inches</i>	<i>inches</i>		<i>inches</i>	
# SHR-34615RS	1860	25.400 <i>1.000</i>	88.900 <i>3.500</i>	38.100 <i>1.500</i>	19.100 <i>0.752</i>	32.000 <i>1.260</i>	134.900 <i>5.311</i>	M16x2.00	48.000 <i>1.890</i>	81.349
# SHR-34103RS	1905	35.600 <i>1.402</i>	129.500 <i>5.098</i>	52.100 <i>2.051</i>	25.400 <i>1.000</i>	38.000 <i>1.496</i>	187.200 <i>7.370</i>	M24x3.00	71.400 <i>2.811</i>	310.482
# SHR-34716RS	2177	25.400 <i>1.000</i>	88.900 <i>3.500</i>	38.100 <i>1.500</i>	19.100 <i>0.752</i>	38.000 <i>1.496</i>	134.900 <i>5.311</i>	M20x2.50	48.000 <i>1.890</i>	135.582
# SHR-34714RS	2177	25.400 <i>1.000</i>	88.900 <i>3.500</i>	38.100 <i>1.500</i>	19.100 <i>0.752</i>	25.000 <i>0.984</i>	134.900 <i>5.311</i>	M20x2.50	48.000 <i>1.890</i>	135.582
# SHR-33715RS	2268	25.400 <i>1.000</i>	88.900 <i>3.500</i>	38.100 <i>1.500</i>	19.050 <i>0.750</i>	25.400 <i>1.000</i>	17.450 <i>0.687</i>	3/4-10 UNC	48.006 <i>1.890</i>	311.838
# SHR-33716RS	2268	25.400 <i>1.000</i>	88.900 <i>3.500</i>	38.100 <i>1.500</i>	19.050 <i>0.750</i>	38.100 <i>1.500</i>	134.874 <i>5.310</i>	3/4-10 UNC	48.006 <i>1.890</i>	311.838
# SHR-33714RS	2268	25.400 <i>1.000</i>	88.900 <i>3.500</i>	38.100 <i>1.500</i>	19.050 <i>0.750</i>	25.400 <i>1.000</i>	134.874 <i>5.310</i>	3/4-10 UNC	48.006 <i>1.890</i>	311.838
# SHR-33717RS	2268	25.400 <i>1.000</i>	88.900 <i>3.500</i>	38.100 <i>1.500</i>	19.050 <i>0.750</i>	25.400 <i>1.000</i>	174.498 <i>6.870</i>	3/4-10 UNC	48.006 <i>1.890</i>	637.234
# SHR-33102RS	3175	35.560 <i>1.400</i>	129.540 <i>5.100</i>	52.070 <i>2.050</i>	25.400 <i>1.000</i>	30.480 <i>1.200</i>	187.198 <i>7.370</i>	3/4-10 UNC	71.374 <i>2.810</i>	1084.654
# SHR-33103RS	3175	35.560 <i>1.400</i>	129.540 <i>5.100</i>	52.070 <i>2.050</i>	25.400 <i>1.000</i>	36.830 <i>1.450</i>	187.198 <i>7.370</i>	3/4-10 UNC	71.374 <i>2.810</i>	1084.654

Indicates item not stocked at time of printing - Please enquire for lead time

Page 6 of 7

E&OE Pricing and all details subject to change without notice - Copyright Miniature Bearings Australia Pty Ltd
MBA Size Listings are a guide to sizes only and must not be solely relied on for critical design information.

Rings - Hoist - Heavy Duty - MIL-STD1365

Part Number	Rated Load Kg	Radius (A) mm	Ring Width (B) mm	Body Height (C) mm	Ring Wire Width (D) mm	Thread Length (E) mm	Ring Length (F) mm	Thread	Body Width (K) mm	Torque Nm
		<i>inches</i>	<i>inches</i>	<i>inches</i>	<i>inches</i>	<i>inches</i>	<i>inches</i>		<i>inches</i>	
# SHR-34401RS	3175	50.800 <i>2.000</i>	171.500 <i>6.752</i>	72.900 <i>2.870</i>	31.800 <i>1.252</i>	67.000 <i>2.638</i>	234.100 <i>9.217</i>	M30x3.50	98.500 <i>3.878</i>	637.234
# SHR-33107RS	4536	35.560 <i>1.400</i>	129.540 <i>5.100</i>	52.070 <i>2.050</i>	25.400 <i>1.000</i>	55.880 <i>2.200</i>	187.198 <i>7.370</i>	1-8 UNC	71.374 <i>2.810</i>	81.349
# SHR-33106RS	4536	35.560 <i>1.400</i>	129.540 <i>5.100</i>	52.070 <i>2.050</i>	25.400 <i>1.000</i>	30.480 <i>1.200</i>	187.198 <i>7.370</i>	1-8 UNC	71.374 <i>2.810</i>	37.963
# SHR-33105RS	4536	35.560 <i>1.400</i>	129.540 <i>5.100</i>	52.070 <i>2.050</i>	25.400 <i>1.000</i>	36.830 <i>1.450</i>	187.198 <i>7.370</i>	1-8 UNC	71.374 <i>2.810</i>	37.963
# SHR-33402RS	6804	50.800 <i>2.000</i>	171.450 <i>6.750</i>	72.898 <i>2.870</i>	31.750 <i>1.250</i>	47.752 <i>1.880</i>	234.188 <i>9.220</i>	1 1/4-7 UNC	98.552 <i>3.880</i>	81.349
# SHR-33401RS	6804	50.800 <i>2.000</i>	171.450 <i>6.750</i>	72.898 <i>2.870</i>	31.750 <i>1.250</i>	66.802 <i>2.630</i>	234.188 <i>9.220</i>	1 1/4-7 UNC	73.152 <i>2.880</i>	135.582
# SHR-33424RS	10886	50.800 <i>2.000</i>	171.450 <i>6.750</i>	72.898 <i>2.870</i>	31.750 <i>1.250</i>	66.802 <i>2.630</i>	234.188 <i>9.220</i>	1 1/2-6 UNC	73.152 <i>2.880</i>	135.582
# SHR-33427RS	13608	50.800 <i>2.000</i>	171.450 <i>6.750</i>	72.898 <i>2.870</i>	31.750 <i>1.250</i>	75.184 <i>2.960</i>	234.188 <i>9.220</i>	2-4.5 UNC	98.552 <i>3.880</i>	637.234

Indicates item not stocked at time of printing - Please enquire for lead time

Page 7 of 7

E&OE Pricing and all details subject to change without notice - Copyright Miniature Bearings Australia Pty Ltd
MBA Size Listings are a guide to sizes only and must not be solely relied on for critical design information.

DISTRIBUTED BY

Distributed By:

