



# Rod Ends - Plastic - Female

10/4/2018

# Indicates item not stocked at time of printing - Please enquire for lead time

E&OE Pricing and all details subject to change without notice - Copyright Miniature Bearings Australia Pty Ltd

MBA Size Listings are a guide to sizes only and must not be solely relied on for critical design information.

Page 1 of 13

## INFORMATION

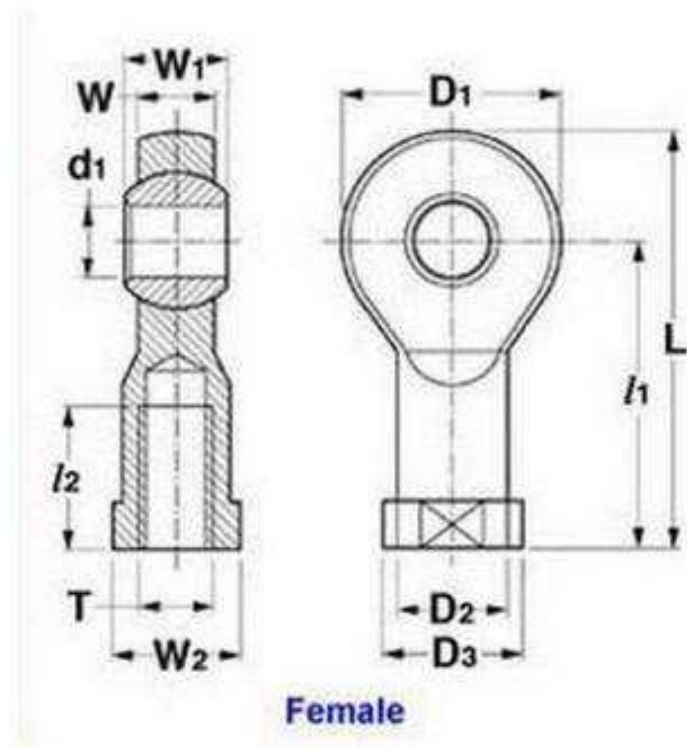
Thermoplastic Body / L280<sup>(R)</sup> Polymer Ball. Also known as Heim Joints

Dimensions not shown are available on request.

# Indicates item not stocked at time of printing - Please enquire for lead time

E&OE Pricing and all details subject to change without notice - Copyright Miniature Bearings Australia Pty Ltd

MBA Size Listings are a guide to sizes only and must not be solely relied on for critical design information.



Female

# Indicates item not stocked at time of printing - Please enquire for lead time

E&OE Pricing and all details subject to change without notice - Copyright Miniature Bearings Australia Pty Ltd

MBA Size Listings are a guide to sizes only and must not be solely relied on for critical design information.

## Rod Ends - Plastic - Female

Part Number	Eye Size (d1) mm	Overall Length (L) mm	Thread Size	Thread Length (l2) mm	Head Width (W) mm	Eye Width (W1) mm	Head Diameter (D1) mm	Centre Height (l1) mm	Grease Nipple	Max Angle of Pivot Deg
	<i>inches</i>	<i>inches</i>		<i>inches</i>	<i>inches</i>	<i>inches</i>	<i>inches</i>	<i>inches</i>		
REF-020-R-PP	2.000 <i>0.079</i>	17.00 <i>0.669</i>	M2x0.4 Right	6.00 <i>0.236</i>	3.00 <i>0.118</i>	4.00 <i>0.157</i>	9.00 <i>0.354</i>	12.50 <i>0.492</i>	No	30.00
REF-020-L-PP	2.000 <i>0.079</i>	17.00 <i>0.669</i>	M2x0.4 Left	6.00 <i>0.236</i>	3.00 <i>0.118</i>	4.00 <i>0.157</i>	9.00 <i>0.354</i>	12.50 <i>0.492</i>	No	30.00
# REF-030-L-PP	3.000 <i>0.118</i>	25.00 <i>0.984</i>	M3x0.5 Left	8.00 <i>0.315</i>	4.50 <i>0.177</i>	6.00 <i>0.236</i>	13.00 <i>0.512</i>	18.50 <i>0.728</i>	No	30.00
REF-030-R-PP	3.000 <i>0.118</i>	25.00 <i>0.984</i>	M3x0.5 Right	8.00 <i>0.315</i>	4.50 <i>0.177</i>	6.00 <i>0.236</i>	13.00 <i>0.512</i>	18.50 <i>0.728</i>	No	30.00
# REF-040-L-PP	4.000 <i>0.157</i>	30.00 <i>1.181</i>	M4x0.7 Left	9.50 <i>0.374</i>	3.50 <i>0.138</i>	5.00 <i>0.197</i>	15.00 <i>0.591</i>	22.25 <i>0.876</i>	No	33.00
REF-040-R-PP	4.000 <i>0.157</i>	30.00 <i>1.181</i>	M4x0.7 Right	9.50 <i>0.374</i>	3.50 <i>0.138</i>	5.00 <i>0.197</i>	15.00 <i>0.591</i>	22.25 <i>0.876</i>	No	33.00
# REF-048-L-PP	4.763 <i>0.188</i>	34.90 <i>1.374</i>	10-32 UNF Left	12.70 <i>0.500</i>	5.94 <i>0.234</i>	7.92 <i>0.312</i>	14.29 <i>0.563</i>	26.97 <i>1.062</i>	No	25.00
# REF-048-R-PP	4.763 <i>0.188</i>	34.90 <i>1.374</i>	10-32 UNF Right	12.70 <i>0.500</i>	5.94 <i>0.234</i>	7.92 <i>0.312</i>	14.29 <i>0.563</i>	26.97 <i>1.062</i>	No	25.00
REF-050-R-PP	5.000 <i>0.197</i>	36.00 <i>1.417</i>	M5x0.80 Right	10.00 <i>0.394</i>	6.00 <i>0.236</i>	8.00 <i>0.315</i>	18.00 <i>0.709</i>	27.00 <i>1.063</i>	No	30.00
REF-050-R-PP-040	5.000 <i>0.197</i>	36.00 <i>1.417</i>	M4x0.7 Right	10.00 <i>0.394</i>	8.00 <i>0.315</i>	6.00 <i>0.236</i>	13.00 <i>0.512</i>	27.00 <i>1.063</i>	No	30.00

# Indicates item not stocked at time of printing - Please enquire for lead time

Page 4 of 13

E&OE Pricing and all details subject to change without notice - Copyright Miniature Bearings Australia Pty Ltd  
MBA Size Listings are a guide to sizes only and must not be solely relied on for critical design information.

## Rod Ends - Plastic - Female

Part Number	Eye Size (d1) mm	Overall Length (L) mm	Thread Size	Thread Length (l2) mm	Head Width (W) mm	Eye Width (W1) mm	Head Diameter (D1) mm	Centre Height (l1) mm	Grease Nipple	Max Angle of Pivot Deg
	<i>inches</i>	<i>inches</i>		<i>inches</i>	<i>inches</i>	<i>inches</i>	<i>inches</i>	<i>inches</i>		
# REF-050-L-PP	5.000 <i>0.197</i>	36.00 <i>1.417</i>	M5x0.8 Left	10.00 <i>0.394</i>	6.00 <i>0.236</i>	8.00 <i>0.315</i>	18.00 <i>0.709</i>	27.00 <i>1.063</i>	No	30.00
# REF-050-L-PP-N	5.000 <i>0.197</i>	39.50 <i>1.555</i>	M5x0.8 Left	12.00 <i>0.472</i>	6.00 <i>0.236</i>	4.40 <i>0.173</i>	19.00 <i>0.748</i>	30.00 <i>1.181</i>	No	33.00
REF-050-R-PP-N	5.000 <i>0.197</i>	39.50 <i>1.555</i>	M5x0.8 Right	12.00 <i>0.472</i>	6.00 <i>0.236</i>	4.40 <i>0.173</i>	19.00 <i>0.748</i>	30.00 <i>1.181</i>	No	33.00
# REF-060-L-PP	6.000 <i>0.236</i>	40.00 <i>1.575</i>	M6x1 Left	12.00 <i>0.472</i>	7.00 <i>0.276</i>	9.00 <i>0.354</i>	20.00 <i>0.787</i>	30.00 <i>1.181</i>	No	29.00
REF-060-R-PP	6.000 <i>0.236</i>	40.00 <i>1.575</i>	M6x1 Right	12.00 <i>0.472</i>	7.00 <i>0.276</i>	9.00 <i>0.354</i>	20.00 <i>0.787</i>	30.00 <i>1.181</i>	No	29.00
# REF-060-L-PP-N	6.000 <i>0.236</i>	40.50 <i>1.594</i>	M6x1 Left	12.00 <i>0.472</i>	6.00 <i>0.236</i>	4.40 <i>0.173</i>	21.00 <i>0.827</i>	30.00 <i>1.181</i>	No	27.00
# REF-060-R-PP-N	6.000 <i>0.236</i>	40.50 <i>1.594</i>	M6x1 Right	12.00 <i>0.472</i>	6.00 <i>0.236</i>	4.40 <i>0.173</i>	21.00 <i>0.827</i>	30.00 <i>1.181</i>	No	27.00
# REF-064-L-PP-A	6.350 <i>0.250</i>	42.85 <i>1.687</i>	1/4-28 UNF Left	17.45 <i>0.687</i>	9.27 <i>0.365</i>	6.35 <i>0.250</i>	16.67 <i>0.656</i>	33.32 <i>1.312</i>	No	25.00
REF-064-L-PP-B	6.350 <i>0.250</i>	42.85 <i>1.687</i>	1/4-28 UNF Left	17.45 <i>0.687</i>	9.27 <i>0.365</i>	6.91 <i>0.272</i>	19.05 <i>0.750</i>	33.33 <i>1.312</i>	No	25.00

# Indicates item not stocked at time of printing - Please enquire for lead time

Page 5 of 13

E&OE Pricing and all details subject to change without notice - Copyright Miniature Bearings Australia Pty Ltd

MBA Size Listings are a guide to sizes only and must not be solely relied on for critical design information.

## Rod Ends - Plastic - Female

Part Number	Eye Size (d1) mm	Overall Length (L) mm	Thread Size	Thread Length (l2) mm	Head Width (W) mm	Eye Width (W1) mm	Head Diameter (D1) mm	Centre Height (l1) mm	Grease Nipple	Max Angle of Pivot Deg
	<i>inches</i>	<i>inches</i>		<i>inches</i>	<i>inches</i>	<i>inches</i>	<i>inches</i>	<i>inches</i>		
# REF-064-R-PP-A	6.350	42.85	1/4-28 UNF Right	17.45	9.27	6.35	16.67	33.32	No	25.00
	<i>0.250</i>	<i>1.687</i>		<i>0.687</i>	<i>0.365</i>	<i>0.250</i>	<i>0.656</i>	<i>1.312</i>		
REF-064-R-PP-B	6.350	42.85	1/4-28 UNF Right	17.45	9.27	6.91	19.05	33.33	No	25.00
	<i>0.250</i>	<i>1.687</i>		<i>0.687</i>	<i>0.365</i>	<i>0.272</i>	<i>0.750</i>	<i>1.312</i>		
# REF-079-L-PP-B	7.938	46.05	5/16-24 UNF Left	17.45	11.10	8.64	22.23	34.93	No	25.00
	<i>0.313</i>	<i>1.813</i>		<i>0.687</i>	<i>0.437</i>	<i>0.340</i>	<i>0.875</i>	<i>1.375</i>		
# REF-079-R-PP-A	7.938	46.05	5/16-24 UNF Right	17.45	11.10	7.92	19.05	34.93	No	25.00
	<i>0.313</i>	<i>1.813</i>		<i>0.687</i>	<i>0.437</i>	<i>0.312</i>	<i>0.750</i>	<i>1.375</i>		
# REF-079-L-PP-A	7.938	46.05	5/16-24 UNF Left	17.45	11.10	7.92	19.05	34.93	No	25.00
	<i>0.313</i>	<i>1.813</i>		<i>0.687</i>	<i>0.437</i>	<i>0.312</i>	<i>0.750</i>	<i>1.375</i>		
# REF-079-R-PP-B	7.938	46.05	5/16-24 UNF Right	17.45	11.10	8.64	22.23	34.93	No	25.00
	<i>0.313</i>	<i>1.813</i>		<i>0.687</i>	<i>0.437</i>	<i>0.340</i>	<i>0.875</i>	<i>1.375</i>		
# REF-080-L-PP	8.000	48.00	M8x1.25 Left	16.00	9.00	12.00	24.00	36.00	No	25.00
	<i>0.315</i>	<i>1.890</i>		<i>0.630</i>	<i>0.354</i>	<i>0.472</i>	<i>0.945</i>	<i>1.417</i>		
# REF-080-L-PP-N	8.000	48.00	M8x1.25 Left	16.00	8.00	6.00	24.00	36.00	No	24.00
	<i>0.315</i>	<i>1.890</i>		<i>0.630</i>	<i>0.315</i>	<i>0.236</i>	<i>0.945</i>	<i>1.417</i>		
REF-080-R-PP	8.000	48.00	M8x1.25 Right	16.00	9.00	12.00	24.00	36.00	No	25.00
	<i>0.315</i>	<i>1.890</i>		<i>0.630</i>	<i>0.354</i>	<i>0.472</i>	<i>0.945</i>	<i>1.417</i>		

# Indicates item not stocked at time of printing - Please enquire for lead time

Page 6 of 13

E&OE Pricing and all details subject to change without notice - Copyright Miniature Bearings Australia Pty Ltd  
MBA Size Listings are a guide to sizes only and must not be solely relied on for critical design information.

## Rod Ends - Plastic - Female

Part Number	Eye Size (d1) mm	Overall Length (L) mm	Thread Size	Thread Length (l2) mm	Head Width (W) mm	Eye Width (W1) mm	Head Diameter (D1) mm	Centre Height (l1) mm	Grease Nipple	Max Angle of Pivot Deg
	<i>inches</i>	<i>inches</i>		<i>inches</i>	<i>inches</i>	<i>inches</i>	<i>inches</i>	<i>inches</i>		
# REF-080-R-PP-N	8.000 <i>0.315</i>	48.00 <i>1.890</i>	M8x1.25 Right	16.00 <i>0.630</i>	8.00 <i>0.315</i>	6.00 <i>0.236</i>	24.00 <i>0.945</i>	36.00 <i>1.417</i>	No	24.00
# REF-095-L-PP-A	9.525 <i>0.375</i>	53.98 <i>2.125</i>	3/8-24 UNF Left	20.62 <i>0.812</i>	12.70 <i>0.500</i>	9.12 <i>0.359</i>	20.64 <i>0.813</i>	41.28 <i>1.625</i>	No	22.00
# REF-095-L-PP-B	9.525 <i>0.375</i>	53.98 <i>2.125</i>	3/8-24 UNF Left	20.63 <i>0.812</i>	12.70 <i>0.500</i>	10.01 <i>0.394</i>	25.40 <i>1.000</i>	41.28 <i>1.625</i>	No	22.00
# REF-095-R-PP-A	9.525 <i>0.375</i>	53.98 <i>2.125</i>	3/8-24 UNF Right	20.62 <i>0.812</i>	12.70 <i>0.500</i>	9.12 <i>0.359</i>	20.64 <i>0.813</i>	41.28 <i>1.625</i>	No	22.00
# REF-095-R-PP-B	9.525 <i>0.375</i>	53.98 <i>2.125</i>	3/8-24 UNF Right	20.63 <i>0.812</i>	12.70 <i>0.500</i>	10.01 <i>0.394</i>	25.40 <i>1.000</i>	41.28 <i>1.625</i>	No	22.00
# REF-100-L-PP-N	10.000 <i>0.394</i>	57.50 <i>2.264</i>	M10x1.5 Left	18.00 <i>0.709</i>	9.00 <i>0.354</i>	7.00 <i>0.276</i>	29.00 <i>1.142</i>	43.00 <i>1.693</i>	No	24.00
# REF-100-R-PP-N	10.000 <i>0.394</i>	57.50 <i>2.264</i>	M10x1.5 Right	18.00 <i>0.709</i>	9.00 <i>0.354</i>	7.00 <i>0.276</i>	29.00 <i>1.142</i>	43.00 <i>1.693</i>	No	24.00
# REF-100-R-PP-N-F	10.000 <i>0.394</i>	57.57 <i>2.267</i>	M10x1.25 Right	18.00 <i>0.709</i>	9.00 <i>0.354</i>	7.00 <i>0.276</i>	29.00 <i>1.142</i>	43.00 <i>1.693</i>	No	24.00
# REF-100-L-PP-N-F	10.000 <i>0.394</i>	57.57 <i>2.267</i>	M10x1.25 Left	18.00 <i>0.709</i>	9.00 <i>0.354</i>	7.00 <i>0.276</i>	29.00 <i>1.142</i>	43.00 <i>1.693</i>	No	24.00

# Indicates item not stocked at time of printing - Please enquire for lead time

Page 7 of 13

E&OE Pricing and all details subject to change without notice - Copyright Miniature Bearings Australia Pty Ltd  
MBA Size Listings are a guide to sizes only and must not be solely relied on for critical design information.

## Rod Ends - Plastic - Female

Part Number	Eye Size (d1) mm	Overall Length (L) mm	Thread Size	Thread Length (l2) mm	Head Width (W) mm	Eye Width (W1) mm	Head Diameter (D1) mm	Centre Height (l1) mm	Grease Nipple	Max Angle of Pivot Deg
	<i>inches</i>	<i>inches</i>		<i>inches</i>	<i>inches</i>	<i>inches</i>	<i>inches</i>	<i>inches</i>		
# REF-100-R-PP	10.000 <i>0.394</i>	58.00 <i>2.283</i>	M10x1.5 Right	20.00 <i>0.787</i>	10.50 <i>0.413</i>	14.00 <i>0.551</i>	30.00 <i>1.181</i>	43.00 <i>1.693</i>	No	25.00
# REF-100-R-PP-F	10.000 <i>0.394</i>	58.00 <i>2.283</i>	M10x1.25 Right	20.00 <i>0.787</i>	14.00 <i>0.551</i>	10.50 <i>0.413</i>	30.00 <i>1.181</i>	43.00 <i>1.693</i>	No	25.00
# REF-100-L-PP	10.000 <i>0.394</i>	58.00 <i>2.283</i>	M10x1.5 Left	20.00 <i>0.787</i>	10.50 <i>0.413</i>	14.00 <i>0.551</i>	30.00 <i>1.181</i>	43.00 <i>1.693</i>	No	25.00
# REF-100-L-PP-F	10.000 <i>0.394</i>	58.00 <i>2.283</i>	M10x1.25 Left	20.00 <i>0.787</i>	14.00 <i>0.551</i>	10.50 <i>0.413</i>	30.00 <i>1.181</i>	43.00 <i>1.693</i>	No	25.00
# REF-111-L-PP	11.113 <i>0.438</i>	60.30 <i>2.374</i>	7/16-20 UNF Left	23.80 <i>0.937</i>	10.31 <i>0.406</i>	14.27 <i>0.562</i>	23.02 <i>0.906</i>	46.02 <i>1.812</i>	No	22.00
# REF-111-R-PP	11.113 <i>0.438</i>	60.30 <i>2.374</i>	7/16-20 UNF Right	23.80 <i>0.937</i>	10.31 <i>0.406</i>	14.27 <i>0.562</i>	23.02 <i>0.906</i>	46.02 <i>1.812</i>	No	22.00
# REF-120-R-PP	12.000 <i>0.472</i>	67.00 <i>2.638</i>	M12x1.75 Right	22.00 <i>0.866</i>	12.00 <i>0.472</i>	16.00 <i>0.630</i>	34.00 <i>1.339</i>	50.00 <i>1.969</i>	No	25.00
# REF-120-L-PP	12.000 <i>0.472</i>	67.00 <i>2.638</i>	M12x1.75 Left	22.00 <i>0.866</i>	12.00 <i>0.472</i>	16.00 <i>0.630</i>	34.00 <i>1.339</i>	50.00 <i>1.969</i>	No	25.00
# REF-120-L-PP-F	12.000 <i>0.472</i>	67.00 <i>2.638</i>	M12x1.25 Left	22.00 <i>0.866</i>	16.00 <i>0.630</i>	12.00 <i>0.472</i>	34.00 <i>1.339</i>	50.00 <i>1.969</i>	No	25.00
# REF-120-L-PP-N-F	12.000 <i>0.472</i>	67.00 <i>2.638</i>	M12x1.25 Left	20.00 <i>0.787</i>	10.00 <i>0.394</i>	8.00 <i>0.315</i>	34.00 <i>1.339</i>	50.00 <i>1.969</i>	No	21.00

# Indicates item not stocked at time of printing - Please enquire for lead time

Page 8 of 13

E&OE Pricing and all details subject to change without notice - Copyright Miniature Bearings Australia Pty Ltd  
MBA Size Listings are a guide to sizes only and must not be solely relied on for critical design information.



## Rod Ends - Plastic - Female

Part Number	Eye Size (d1) mm	Overall Length (L) mm	Thread Size	Thread Length (l2) mm	Head Width (W) mm	Eye Width (W1) mm	Head Diameter (D1) mm	Centre Height (l1) mm	Grease Nipple	Max Angle of Pivot Deg
	<i>inches</i>	<i>inches</i>		<i>inches</i>	<i>inches</i>	<i>inches</i>	<i>inches</i>	<i>inches</i>		
# REF-120-R-PP-F	12.000 <i>0.472</i>	67.00 <i>2.638</i>	M12x1.25 Right	22.00 <i>0.866</i>	16.00 <i>0.630</i>	12.00 <i>0.472</i>	34.00 <i>1.339</i>	50.00 <i>1.969</i>	No	25.00
# REF-120-R-PP-N	12.000 <i>0.472</i>	67.00 <i>2.638</i>	M12x1.75 Right	20.00 <i>0.787</i>	10.00 <i>0.394</i>	8.00 <i>0.315</i>	34.00 <i>1.339</i>	50.00 <i>1.969</i>	No	21.00
# REF-120-R-PP-N-F	12.000 <i>0.472</i>	67.00 <i>2.638</i>	M12x1.25 Right	20.00 <i>0.787</i>	10.00 <i>0.394</i>	8.00 <i>0.315</i>	34.00 <i>1.339</i>	50.00 <i>1.969</i>	No	21.00
# REF-120-L-PP-N	12.000 <i>0.472</i>	67.00 <i>2.638</i>	M12x1.75 Left	20.00 <i>0.787</i>	10.00 <i>0.394</i>	8.00 <i>0.315</i>	34.00 <i>1.339</i>	50.00 <i>1.969</i>	No	21.00
# REF-127-L-PP-A	12.700 <i>0.500</i>	70.64 <i>2.781</i>	1/2-20 UNF Left	26.97 <i>1.062</i>	15.88 <i>0.625</i>	11.51 <i>0.453</i>	25.40 <i>1.000</i>	53.98 <i>2.125</i>	No	22.00
# REF-127-L-PP-B	12.700 <i>0.500</i>	70.64 <i>2.781</i>	1/2-20 UNF Left	26.98 <i>1.062</i>	15.88 <i>0.625</i>	12.37 <i>0.487</i>	34.00 <i>1.339</i>	53.98 <i>2.125</i>	No	22.00
# REF-127-R-PP-A	12.700 <i>0.500</i>	70.64 <i>2.781</i>	1/2-20 UNF Right	26.97 <i>1.062</i>	15.88 <i>0.625</i>	11.51 <i>0.453</i>	25.40 <i>1.000</i>	53.98 <i>2.125</i>	No	22.00
# REF-127-R-PP-B	12.700 <i>0.500</i>	70.64 <i>2.781</i>	1/2-20 UNF Right	26.98 <i>1.062</i>	15.88 <i>0.625</i>	12.37 <i>0.487</i>	34.00 <i>1.339</i>	53.98 <i>2.125</i>	No	22.00
# REF-140-L-PP	14.000 <i>0.551</i>	76.00 <i>2.992</i>	M14x2 Left	25.00 <i>0.984</i>	13.50 <i>0.531</i>	19.00 <i>0.748</i>	38.00 <i>1.496</i>	57.00 <i>2.244</i>	No	23.00

# Indicates item not stocked at time of printing - Please enquire for lead time

Page 9 of 13

E&OE Pricing and all details subject to change without notice - Copyright Miniature Bearings Australia Pty Ltd  
MBA Size Listings are a guide to sizes only and must not be solely relied on for critical design information.

## Rod Ends - Plastic - Female

Part Number	Eye Size (d1) mm	Overall Length (L) mm	Thread Size	Thread Length (l2) mm	Head Width (W) mm	Eye Width (W1) mm	Head Diameter (D1) mm	Centre Height (l1) mm	Grease Nipple	Max Angle of Pivot Deg
	<i>inches</i>	<i>inches</i>		<i>inches</i>	<i>inches</i>	<i>inches</i>	<i>inches</i>	<i>inches</i>		
# REF-140-R-PP	14.000 <i>0.551</i>	76.00 <i>2.992</i>	M14x2 Right	25.00 <i>0.984</i>	13.50 <i>0.531</i>	19.00 <i>0.748</i>	38.00 <i>1.496</i>	57.00 <i>2.244</i>	No	23.00
# REF-150-L-PP-140	15.000 <i>0.591</i>	81.00 <i>3.189</i>	M14x2 Left	26.00 <i>1.024</i>	12.00 <i>0.472</i>	10.00 <i>0.394</i>	40.00 <i>1.575</i>	61.00 <i>2.402</i>	No	21.00
# REF-150-R-PP-140	15.000 <i>0.591</i>	81.00 <i>3.189</i>	M14x2 Right	26.00 <i>1.024</i>	12.00 <i>0.472</i>	10.00 <i>0.394</i>	40.00 <i>1.575</i>	61.00 <i>2.402</i>	No	21.00
# REF-159-L-PP-N	15.875 <i>0.625</i>	82.55 <i>3.250</i>	5/8-18 UNF Left	34.93 <i>1.375</i>	19.05 <i>0.750</i>	11.79 <i>0.464</i>	28.58 <i>1.125</i>	63.50 <i>2.500</i>	No	22.00
# REF-159-R-PP-A	15.875 <i>0.625</i>	82.55 <i>3.250</i>	5/8-18 UNF Right	34.93 <i>1.375</i>	19.05 <i>0.750</i>	11.79 <i>0.464</i>	28.58 <i>1.125</i>	63.50 <i>2.500</i>	No	22.00
# REF-159-R-PP-B	15.875 <i>0.625</i>	82.55 <i>3.250</i>	5/8-18 UNF Right	34.93 <i>1.375</i>	19.05 <i>0.750</i>	13.84 <i>0.545</i>	38.10 <i>1.500</i>	63.50 <i>2.500</i>	No	22.00
# REF-159-L-PP	15.875 <i>0.625</i>	82.55 <i>3.250</i>	5/8-18 UNF Left	34.93 <i>1.375</i>	13.84 <i>0.545</i>	19.05 <i>0.750</i>	38.10 <i>1.500</i>	63.50 <i>2.500</i>	No	22.00
# REF-160-L-PP	16.000 <i>0.630</i>	85.00 <i>3.346</i>	M16x2 Left	28.00 <i>1.102</i>	15.00 <i>0.591</i>	21.00 <i>0.827</i>	42.00 <i>1.654</i>	64.00 <i>2.520</i>	No	23.00
# REF-160-R-PP	16.000 <i>0.630</i>	85.00 <i>3.346</i>	M16x2 Right	28.00 <i>1.102</i>	15.00 <i>0.591</i>	21.00 <i>0.827</i>	42.00 <i>1.654</i>	64.00 <i>2.520</i>	No	23.00

# Indicates item not stocked at time of printing - Please enquire for lead time

Page 10 of 13

E&OE Pricing and all details subject to change without notice - Copyright Miniature Bearings Australia Pty Ltd  
MBA Size Listings are a guide to sizes only and must not be solely relied on for critical design information.

## Rod Ends - Plastic - Female

Part Number	Eye Size (d1) mm	Overall Length (L) mm	Thread Size	Thread Length (l2) mm	Head Width (W) mm	Eye Width (W1) mm	Head Diameter (D1) mm	Centre Height (l1) mm	Grease Nipple	Max Angle of Pivot Deg
	<i>inches</i>	<i>inches</i>		<i>inches</i>	<i>inches</i>	<i>inches</i>	<i>inches</i>	<i>inches</i>		
# REF-170-L-PP-160	17.000 <i>0.669</i>	90.00 <i>3.543</i>	M16x2 Left	27.00 <i>1.063</i>	14.00 <i>0.551</i>	11.00 <i>0.433</i>	46.00 <i>1.811</i>	67.00 <i>2.638</i>	No	21.00
# REF-170-L-PP-160F	17.000 <i>0.669</i>	90.00 <i>3.543</i>	M16x1.5 Left	27.00 <i>1.063</i>	14.00 <i>0.551</i>	11.00 <i>0.433</i>	46.00 <i>1.811</i>	67.00 <i>2.638</i>	No	18.00
# REF-170-R-PP-160	17.000 <i>0.669</i>	90.00 <i>3.543</i>	M16x2 Right	27.00 <i>1.063</i>	14.00 <i>0.551</i>	11.00 <i>0.433</i>	46.00 <i>1.811</i>	67.00 <i>2.638</i>	No	21.00
# REF-170-R-PP-160F	17.000 <i>0.669</i>	90.00 <i>3.543</i>	M16x1.5 Right	27.00 <i>1.063</i>	14.00 <i>0.551</i>	11.00 <i>0.433</i>	46.00 <i>1.811</i>	67.00 <i>2.638</i>	No	18.00
# REF-180-L-PP-F	18.000 <i>0.709</i>	94.00 <i>3.701</i>	M18x1.5 Left	32.00 <i>1.260</i>	23.00 <i>0.906</i>	16.50 <i>0.650</i>	46.00 <i>1.811</i>	71.00 <i>2.795</i>	No	23.00
# REF-180-R-PP-F	18.000 <i>0.709</i>	94.00 <i>3.701</i>	M18x1.5 Right	32.00 <i>1.260</i>	23.00 <i>0.906</i>	16.50 <i>0.650</i>	46.00 <i>1.811</i>	71.00 <i>2.795</i>	No	23.00
# REF-191-L-PP-B	19.050 <i>0.750</i>	95.25 <i>3.750</i>	3/4-16 UNF Left	39.68 <i>1.562</i>	22.23 <i>0.875</i>	17.17 <i>0.676</i>	44.45 <i>1.750</i>	73.03 <i>2.875</i>	No	22.00
# REF-191-R-PP-A	19.050 <i>0.750</i>	95.25 <i>3.750</i>	3/4-16 UNF Right	39.67 <i>1.562</i>	22.23 <i>0.875</i>	15.06 <i>0.593</i>	36.51 <i>1.437</i>	73.03 <i>2.875</i>	No	22.00
# REF-191-R-PP-B	19.050 <i>0.750</i>	95.25 <i>3.750</i>	3/4-16 UNF Right	39.68 <i>1.562</i>	22.23 <i>0.875</i>	17.17 <i>0.676</i>	44.45 <i>1.750</i>	73.03 <i>2.875</i>	No	22.00

# Indicates item not stocked at time of printing - Please enquire for lead time

Page 11 of 13

E&OE Pricing and all details subject to change without notice - Copyright Miniature Bearings Australia Pty Ltd  
MBA Size Listings are a guide to sizes only and must not be solely relied on for critical design information.

## Rod Ends - Plastic - Female

Part Number	Eye Size (d1) mm	Overall Length (L) mm	Thread Size	Thread Length (l2) mm	Head Width (W) mm	Eye Width (W1) mm	Head Diameter (D1) mm	Centre Height (l1) mm	Grease Nipple	Max Angle of Pivot Deg
	<i>inches</i>	<i>inches</i>		<i>inches</i>	<i>inches</i>	<i>inches</i>	<i>inches</i>	<i>inches</i>		
# REF-191-L-PP-A	19.050	95.25	3/4-16 UNF Left	39.67	22.23	15.06	36.51	73.03	No	22.00
	<i>0.750</i>	<i>3.750</i>		<i>1.562</i>	<i>0.875</i>	<i>0.593</i>	<i>1.437</i>	<i>2.875</i>		
# REF-200-L-PP-F	20.000	102.00	M20x1.5 Left	33.00	25.00	18.00	50.00	77.00	No	23.00
	<i>0.787</i>	<i>4.016</i>		<i>1.299</i>	<i>0.984</i>	<i>0.709</i>	<i>1.969</i>	<i>3.031</i>		
# REF-200-R-PP-F	20.000	102.00	M20x1.5 Right	33.00	25.00	18.00	50.00	77.00	No	23.00
	<i>0.787</i>	<i>4.016</i>		<i>1.299</i>	<i>0.984</i>	<i>0.709</i>	<i>1.969</i>	<i>3.031</i>		
# REF-200-L-PP	20.000	103.50	M20x2.5 Left	31.00	13.00	16.00	53.00	77.00	No	16.00
	<i>0.787</i>	<i>4.075</i>		<i>1.220</i>	<i>0.512</i>	<i>0.630</i>	<i>2.087</i>	<i>3.031</i>		
# REF-200-R-PP	20.000	103.50	M20x2.5 Right	31.00	13.00	16.00	53.00	77.00	No	16.00
	<i>0.787</i>	<i>4.075</i>		<i>1.220</i>	<i>0.512</i>	<i>0.630</i>	<i>2.087</i>	<i>3.031</i>		
# REF-200-R-PP-N-F	20.000	103.50	M20x1.5 Right	31.00	16.00	13.00	53.00	77.00	No	18.00
	<i>0.787</i>	<i>4.075</i>		<i>1.220</i>	<i>0.630</i>	<i>0.512</i>	<i>2.087</i>	<i>3.031</i>		
# REF-220-R-PP-F	22.000	112.00	M22x1.5 Right	37.00	28.00	20.00	56.00	84.00	No	22.00
	<i>0.866</i>	<i>4.409</i>		<i>1.457</i>	<i>1.102</i>	<i>0.787</i>	<i>2.205</i>	<i>3.307</i>		
# REF-220-L-PP-F	22.000	112.00	M22x1.5 Left	37.00	28.00	20.00	56.00	84.00	No	22.00
	<i>0.866</i>	<i>4.409</i>		<i>1.457</i>	<i>1.102</i>	<i>0.787</i>	<i>2.205</i>	<i>3.307</i>		
# REF-250-R-PP-240	25.000	124.00	M24x2 Right	42.00	31.00	22.00	60.00	94.00	No	22.00
	<i>0.984</i>	<i>4.882</i>		<i>1.654</i>	<i>1.220</i>	<i>0.866</i>	<i>2.362</i>	<i>3.701</i>		
# REF-250-L-PP-240	25.000	124.00	M24x2 Left	42.00	31.00	22.00	60.00	94.00	No	22.00
	<i>0.984</i>	<i>4.882</i>		<i>1.654</i>	<i>1.220</i>	<i>0.866</i>	<i>2.362</i>	<i>3.701</i>		

# Indicates item not stocked at time of printing - Please enquire for lead time

Page 12 of 13

E&OE Pricing and all details subject to change without notice - Copyright Miniature Bearings Australia Pty Ltd  
MBA Size Listings are a guide to sizes only and must not be solely relied on for critical design information.

## Rod Ends - Plastic - Female

Part Number	Eye Size (d1) mm	Overall Length (L) mm	Thread Size	Thread Length (l2) mm	Head Width (W) mm	Eye Width (W1) mm	Head Diameter (D1) mm	Centre Height (l1) mm	Grease Nipple	Max Angle of Pivot Deg
	<i>inches</i>	<i>inches</i>		<i>inches</i>	<i>inches</i>	<i>inches</i>	<i>inches</i>	<i>inches</i>		
# REF-250-R-PP	25.000 <i>0.984</i>	126.50 <i>4.980</i>	M25x2 Right	38.00 <i>1.496</i>	17.00 <i>0.669</i>	20.00 <i>0.787</i>	64.00 <i>2.520</i>	94.00 <i>3.701</i>	No	16.00
# REF-250-L-PP	25.000 <i>0.984</i>	126.50 <i>4.980</i>	M25x2 Left	38.00 <i>1.496</i>	17.00 <i>0.669</i>	20.00 <i>0.787</i>	64.00 <i>2.520</i>	94.00 <i>3.701</i>	No	16.00
# REF-254-L-PP-A	25.400 <i>1.000</i>	139.70 <i>5.500</i>	1-12 UNF Left	53.98 <i>2.125</i>	34.93 <i>1.375</i>	25.40 <i>1.000</i>	69.85 <i>2.750</i>	104.78 <i>4.125</i>	No	20.00
# REF-254-L-PP-B	25.400 <i>1.000</i>	139.70 <i>5.500</i>	1-12 UNF Left	53.98 <i>2.125</i>	34.93 <i>1.375</i>	25.53 <i>1.005</i>	69.85 <i>2.750</i>	104.78 <i>4.125</i>	No	20.00
# REF-254-R-PP-A	25.400 <i>1.000</i>	139.70 <i>5.500</i>	1-12 UNF Right	53.98 <i>2.125</i>	34.93 <i>1.375</i>	25.40 <i>1.000</i>	69.85 <i>2.750</i>	104.78 <i>4.125</i>	No	20.00
# REF-254-R-PP-B	25.400 <i>1.000</i>	139.70 <i>5.500</i>	1-12 UNF Right	53.98 <i>2.125</i>	34.93 <i>1.375</i>	25.53 <i>1.005</i>	69.85 <i>2.750</i>	104.78 <i>4.125</i>	No	20.00
# REF-300-L-PP	30.000 <i>1.181</i>	145.00 <i>5.709</i>	M30x3.5 Left	51.00 <i>2.008</i>	25.00 <i>0.984</i>	37.00 <i>1.457</i>	70.00 <i>2.756</i>	110.00 <i>4.331</i>	No	22.00
# REF-300-R-PP	30.000 <i>1.181</i>	145.00 <i>5.709</i>	M30x3.5 Right	51.00 <i>2.008</i>	25.00 <i>0.984</i>	37.00 <i>1.457</i>	70.00 <i>2.756</i>	110.00 <i>4.331</i>	No	22.00
# REF-300-R-PP-N	30.000 <i>1.181</i>	146.50 <i>5.768</i>	M30x3.5 Right	47.00 <i>1.850</i>	22.00 <i>0.866</i>	19.00 <i>0.748</i>	73.00 <i>2.874</i>	110.00 <i>4.331</i>	No	13.00
# REF-300-L-PP-N	30.000 <i>1.181</i>	146.50 <i>5.768</i>	M30x3.5 Left	47.00 <i>1.850</i>	22.00 <i>0.866</i>	19.00 <i>0.748</i>	73.00 <i>2.874</i>	110.00 <i>4.331</i>	No	13.00

# Indicates item not stocked at time of printing - Please enquire for lead time

Page 13 of 13

E&OE Pricing and all details subject to change without notice - Copyright Miniature Bearings Australia Pty Ltd  
MBA Size Listings are a guide to sizes only and must not be solely relied on for critical design information.

DISTRIBUTED BY

Distributed By:

