



# Rod Ends - Stainless Steel 303 Housing and Ball - Nylon Raceway - Female

10/4/2018

# Indicates item not stocked at time of printing - Please enquire for lead time

E&OE Pricing and all details subject to change without notice - Copyright Miniature Bearings Australia Pty Ltd

MBA Size Listings are a guide to sizes only and must not be solely relied on for critical design information.

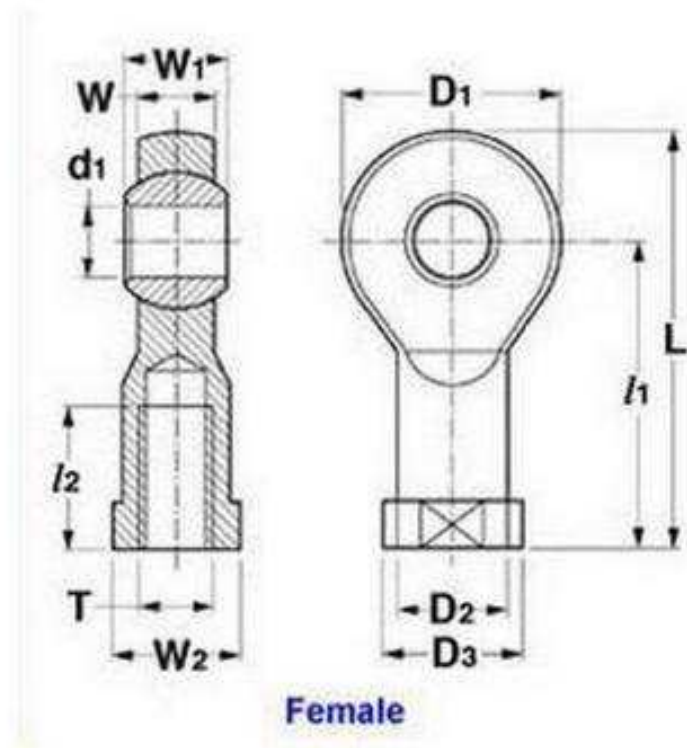
## INFORMATION

Also known as Heim Joints

# Indicates item not stocked at time of printing - Please enquire for lead time

E&OE Pricing and all details subject to change without notice - Copyright Miniature Bearings Australia Pty Ltd

MBA Size Listings are a guide to sizes only and must not be solely relied on for critical design information.



# Indicates item not stocked at time of printing - Please enquire for lead time

E&OE Pricing and all details subject to change without notice - Copyright Miniature Bearings Australia Pty Ltd

MBA Size Listings are a guide to sizes only and must not be solely relied on for critical design information.

## Rod Ends - Stainless Steel 303 Housing and Ball - Nylon Raceway - Female

Part Number	Eye Size (d1) mm	Overall Length (L) mm	Thread Size	Thread Length (l2) mm	Head Width (W) mm	Eye Width (W1) mm	Head Diameter (D) mm	Centre Height (l1) mm	Grease Nipple	Max Angle of Pivot Deg
	<i>inches</i>	<i>inches</i>		<i>inches</i>	<i>inches</i>	<i>inches</i>	<i>inches</i>	<i>inches</i>		
# REF-048-R-SN	4.826	34.925	10-32 UNF Right	14.28	6.35	7.93	15.88	26.98	No	-
	<i>0.190</i>	<i>1.375</i>		<i>0.562</i>	<i>0.250</i>	<i>0.312</i>	<i>0.625</i>	<i>1.062</i>		
REF-064-R-SN	6.350	42.850	1/4-28 UNF Right	19.05	7.14	9.53	19.05	33.33	No	-
	<i>0.250</i>	<i>1.687</i>		<i>0.750</i>	<i>0.281</i>	<i>0.375</i>	<i>0.750</i>	<i>1.312</i>		
# REF-079-R-SN	7.938	46.025	5/16-24 UNF Right	19.05	8.74	11.10	22.23	34.93	No	-
	<i>0.313</i>	<i>1.812</i>		<i>0.750</i>	<i>0.344</i>	<i>0.437</i>	<i>0.875</i>	<i>1.375</i>		
REF-095-R-SN	9.525	53.975	3/8-24 UNF Right	23.80	10.31	12.70	25.40	41.28	No	-
	<i>0.375</i>	<i>2.125</i>		<i>0.937</i>	<i>0.406</i>	<i>0.500</i>	<i>1.000</i>	<i>1.625</i>		
# REF-111-R-SN	11.113	60.325	7/16-20 UNF Right	26.19	11.10	14.28	28.58	46.03	No	-
	<i>0.438</i>	<i>2.375</i>		<i>1.031</i>	<i>0.437</i>	<i>0.562</i>	<i>1.125</i>	<i>1.812</i>		
# REF-127-R-SN	12.700	70.637	1/2-20 UNF Right	30.15	12.70	15.88	33.33	56.20	No	-
	<i>0.500</i>	<i>2.781</i>		<i>1.187</i>	<i>0.500</i>	<i>0.625</i>	<i>1.312</i>	<i>2.213</i>		
# REF-159-R-SN	15.875	82.55	5/8-18 UNF Right	38.10	14.28	19.05	38.10	63.50	No	-
	<i>0.625</i>	<i>3.250</i>		<i>1.500</i>	<i>0.562</i>	<i>0.750</i>	<i>1.500</i>	<i>2.500</i>		
# REF-191-R-SN	19.050	95.25	3/4-16 UNF Right	39.68	17.45	22.23	44.45	73.03	No	-
	<i>0.750</i>	<i>3.750</i>		<i>1.562</i>	<i>0.687</i>	<i>0.875</i>	<i>1.750</i>	<i>2.875</i>		

# Indicates item not stocked at time of printing - Please enquire for lead time

Page 4 of 4

E&OE Pricing and all details subject to change without notice - Copyright Miniature Bearings Australia Pty Ltd  
MBA Size Listings are a guide to sizes only and must not be solely relied on for critical design information.

DISTRIBUTED BY

Distributed By:

