



Rod Ends - Steel - Nylon Raceway - Female

10/4/2018

Indicates item not stocked at time of printing - Please enquire for lead time

E&OE Pricing and all details subject to change without notice - Copyright Miniature Bearings Australia Pty Ltd

MBA Size Listings are a guide to sizes only and must not be solely relied on for critical design information.

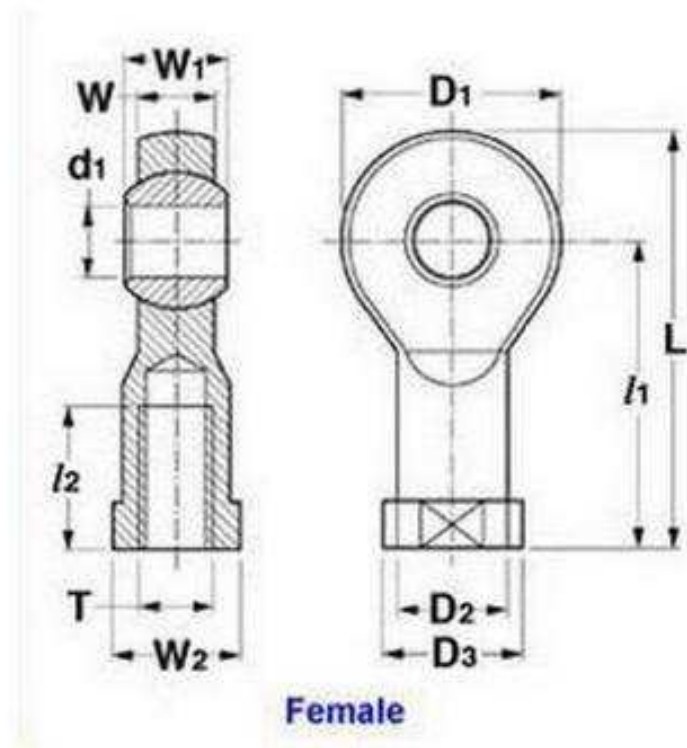
INFORMATION

Also known as Heim Joints

Indicates item not stocked at time of printing - Please enquire for lead time

E&OE Pricing and all details subject to change without notice - Copyright Miniature Bearings Australia Pty Ltd

MBA Size Listings are a guide to sizes only and must not be solely relied on for critical design information.



Female

Indicates item not stocked at time of printing - Please enquire for lead time

E&OE Pricing and all details subject to change without notice - Copyright Miniature Bearings Australia Pty Ltd

MBA Size Listings are a guide to sizes only and must not be solely relied on for critical design information.

Rod Ends - Steel - Nylon Raceway - Female

Part Number	Eye Size (d1) mm	Overall Length (L) mm	Thread Size	Thread Length (l2) mm	Head Width (W) mm	Eye Width (W1) mm	Head Diameter (D) mm	Centre Height (l1) mm	Grease Nipple	Max Angle of Pivot Deg
	<i>inches</i>	<i>inches</i>		<i>inches</i>	<i>inches</i>	<i>inches</i>	<i>inches</i>	<i>inches</i>		
# REF-048-R-CN	4.826	34.93	10-32 UNF Right	14.28	6.35	7.93	15.88	26.98	-	-
	<i>0.190</i>	<i>1.375</i>		<i>0.562</i>	<i>0.250</i>	<i>0.312</i>	<i>0.625</i>	<i>1.062</i>		
# REF-064-L-CN	6.350	33.32	1/4-28 UNF Left	19.05	7.14	9.53	19.05	33.33	-	-
	<i>0.250</i>	<i>1.312</i>		<i>0.750</i>	<i>0.281</i>	<i>0.375</i>	<i>0.750</i>	<i>1.312</i>		
# REF-064-R-CN	6.350	42.85	1/4-28 UNF Right	19.05	7.14	9.53	19.05	33.33	-	-
	<i>0.250</i>	<i>1.687</i>		<i>0.750</i>	<i>0.281</i>	<i>0.375</i>	<i>0.750</i>	<i>1.312</i>		
# REF-079-L-CN	7.938	34.93	5/16-24 UNF Left	19.05	8.74	11.10	22.23	34.93	-	-
	<i>0.313</i>	<i>1.375</i>		<i>0.750</i>	<i>0.344</i>	<i>0.437</i>	<i>0.875</i>	<i>1.375</i>		
# REF-079-R-CN	7.938	46.02	5/16-24 UNF Right	19.05	8.74	11.10	22.23	34.93	-	-
	<i>0.313</i>	<i>1.812</i>		<i>0.750</i>	<i>0.344</i>	<i>0.437</i>	<i>0.875</i>	<i>1.375</i>		
# REF-095-L-CN	9.525	41.28	3/8-24 UNF Left	23.80	10.31	12.70	25.40	41.28	-	-
	<i>0.375</i>	<i>1.625</i>		<i>0.937</i>	<i>0.406</i>	<i>0.500</i>	<i>1.000</i>	<i>1.625</i>		
REF-095-R-CN	9.525	53.98	3/8-24 UNF Right	23.80	10.31	12.70	25.40	41.28	-	-
	<i>0.375</i>	<i>2.125</i>		<i>0.937</i>	<i>0.406</i>	<i>0.500</i>	<i>1.000</i>	<i>1.625</i>		
# REF-111-R-CN	11.113	60.33	7/16-20 UNF Right	26.19	11.10	14.28	28.58	46.03	-	-
	<i>0.438</i>	<i>2.375</i>		<i>1.031</i>	<i>0.437</i>	<i>0.562</i>	<i>1.125</i>	<i>1.812</i>		

Indicates item not stocked at time of printing - Please enquire for lead time

Page 4 of 5

E&OE Pricing and all details subject to change without notice - Copyright Miniature Bearings Australia Pty Ltd
MBA Size Listings are a guide to sizes only and must not be solely relied on for critical design information.

Rod Ends - Steel - Nylon Raceway - Female

Part Number	Eye Size (d1) mm	Overall Length (L) mm	Thread Size	Thread Length (l2) mm	Head Width (W) mm	Eye Width (W1) mm	Head Diameter (D) mm	Centre Height (l1) mm	Grease Nipple	Max Angle of Pivot Deg
	<i>inches</i>	<i>inches</i>		<i>inches</i>	<i>inches</i>	<i>inches</i>	<i>inches</i>	<i>inches</i>		
# REF-127-L-CN	12.700	53.98	1/2-20 UNF Left	30.15	12.70	15.88	33.33	53.98	-	-
	<i>0.500</i>	<i>2.125</i>		<i>1.187</i>	<i>0.500</i>	<i>0.625</i>	<i>1.312</i>	<i>2.125</i>		
# REF-127-R-CN	12.700	70.64	1/2-20 UNF Right	30.15	12.70	15.88	33.33	56.20	-	-
	<i>0.500</i>	<i>2.781</i>		<i>1.187</i>	<i>0.500</i>	<i>0.625</i>	<i>1.312</i>	<i>2.213</i>		
# REF-159-L-CN	15.875	63.50	5/8-18 UNF Left	38.10	14.28	19.05	38.10	63.50	-	-
	<i>0.625</i>	<i>2.500</i>		<i>1.500</i>	<i>0.562</i>	<i>0.750</i>	<i>1.500</i>	<i>2.500</i>		
# REF-159-R-CN	15.875	82.55	5/8-18 UNF Right	38.10	14.28	19.05	38.10	63.50	-	-
	<i>0.625</i>	<i>3.250</i>		<i>1.500</i>	<i>0.562</i>	<i>0.750</i>	<i>1.500</i>	<i>2.500</i>		
# REF-191-L-CN	19.050	73.03	3/4-16 UNF Left	39.68	17.45	22.23	44.45	73.03	-	-
	<i>0.750</i>	<i>2.875</i>		<i>1.562</i>	<i>0.687</i>	<i>0.875</i>	<i>1.750</i>	<i>2.875</i>		
# REF-191-R-CN	19.050	95.25	3/4-16 UNF Right	39.68	17.45	22.23	44.45	73.03	-	-
	<i>0.750</i>	<i>3.750</i>		<i>1.562</i>	<i>0.687</i>	<i>0.875</i>	<i>1.750</i>	<i>2.875</i>		

Indicates item not stocked at time of printing - Please enquire for lead time

Page 5 of 5

E&OE Pricing and all details subject to change without notice - Copyright Miniature Bearings Australia Pty Ltd
MBA Size Listings are a guide to sizes only and must not be solely relied on for critical design information.

DISTRIBUTED BY

Distributed By:

