



Rod Ends - Steel - PTFE Lined - Tight Fit - Female

10/4/2018

Indicates item not stocked at time of printing - Please enquire for lead time

E&OE Pricing and all details subject to change without notice - Copyright Miniature Bearings Australia Pty Ltd

MBA Size Listings are a guide to sizes only and must not be solely relied on for critical design information.

Page 1 of 12

INFORMATION

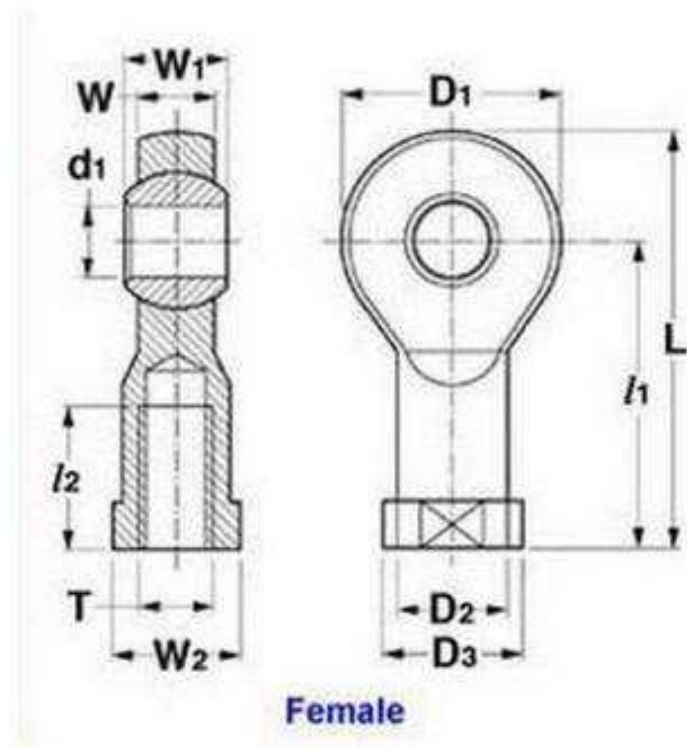
Imperial and Metric. Tight fit (Minimal ball clearance) / Carbon Steel. Also known as Heim Joints

Dimensions not shown are available on request.

Indicates item not stocked at time of printing - Please enquire for lead time

E&OE Pricing and all details subject to change without notice - Copyright Miniature Bearings Australia Pty Ltd

MBA Size Listings are a guide to sizes only and must not be solely relied on for critical design information.



Female

Indicates item not stocked at time of printing - Please enquire for lead time

E&OE Pricing and all details subject to change without notice - Copyright Miniature Bearings Australia Pty Ltd

MBA Size Listings are a guide to sizes only and must not be solely relied on for critical design information.

Rod Ends - Steel - PTFE Lined - Tight Fit - Female

Part Number	Eye Size (d1) mm	Overall Length (L) mm	Thread Size	Thread Length (l2) mm	Head Width (W) mm	Eye Width (W1) mm	Head Diameter (D) mm	Centre Height (l1) mm	Grease Nipple	Max Angle of Pivot Deg
	<i>inches</i>	<i>inches</i>		<i>inches</i>	<i>inches</i>	<i>inches</i>	<i>inches</i>	<i>inches</i>		
REF-030-R-CT	3.000 <i>0.118</i>	27.00 <i>1.063</i>	M3x0.5 Right	10.00 <i>0.394</i>	4.50 <i>0.177</i>	6.00 <i>0.236</i>	12.00 <i>0.472</i>	21.00 <i>0.827</i>	-	-
# REF-030-L-CT	3.000 <i>0.118</i>	27.00 <i>1.063</i>	M3x0.5 Left	10.00 <i>0.394</i>	5.00 <i>0.197</i>	6.00 <i>0.236</i>	12.00 <i>0.472</i>	21.00 <i>0.827</i>	-	-
# REF-048-L-CT	4.826 <i>0.190</i>	34.93 <i>1.375</i>	10-32 UNF Left	14.27 <i>0.562</i>	6.35 <i>0.250</i>	7.92 <i>0.312</i>	15.88 <i>0.625</i>	26.97 <i>1.062</i>	-	-
# REF-048-R-CT	4.826 <i>0.190</i>	34.93 <i>1.375</i>	10-32 UNF Right	14.27 <i>0.562</i>	6.35 <i>0.250</i>	7.92 <i>0.312</i>	15.88 <i>0.625</i>	26.97 <i>1.062</i>	-	-
# REF-050-R-CT-N	5.000 <i>0.197</i>	35.00 <i>1.378</i>	M5x0.8 Right	14.00 <i>0.551</i>	6.00 <i>0.236</i>	8.00 <i>0.315</i>	16.00 <i>0.630</i>	27.00 <i>1.063</i>	-	-
# REF-050-L-CT	5.000 <i>0.197</i>	35.00 <i>1.378</i>	M5x0.8 Left	14.00 <i>0.551</i>	7.00 <i>0.276</i>	8.00 <i>0.315</i>	16.00 <i>0.630</i>	27.00 <i>1.063</i>	-	-
REF-050-R-CT	5.000 <i>0.197</i>	35.00 <i>1.378</i>	M5x0.8 Right	14.00 <i>0.551</i>	7.00 <i>0.276</i>	8.00 <i>0.315</i>	16.00 <i>0.630</i>	27.00 <i>1.063</i>	-	-
# REF-060-R-CT-N	6.000 <i>0.236</i>	-	M6x1 Right	12.00 <i>0.472</i>	4.00 <i>0.157</i>	6.00 <i>0.236</i>	20.00 <i>0.787</i>	30.00 <i>1.181</i>	-	-
# REF-060-L-CT-N	6.000 <i>0.236</i>	-	M6x1 Left	12.00 <i>0.472</i>	4.00 <i>0.157</i>	6.00 <i>0.236</i>	20.00 <i>0.787</i>	30.00 <i>1.181</i>	-	-
REF-060-R-CT-B	6.000 <i>0.236</i>	39.00 <i>1.535</i>	M6x1 Right	14.00 <i>0.551</i>	7.00 <i>0.276</i>	9.00 <i>0.354</i>	18.00 <i>0.709</i>	30.00 <i>1.181</i>	-	-

Indicates item not stocked at time of printing - Please enquire for lead time

Page 4 of 12

E&OE Pricing and all details subject to change without notice - Copyright Miniature Bearings Australia Pty Ltd
MBA Size Listings are a guide to sizes only and must not be solely relied on for critical design information.

Rod Ends - Steel - PTFE Lined - Tight Fit - Female

Part Number	Eye Size (d1) mm <i>inches</i>	Overall Length (L) mm <i>inches</i>	Thread Size	Thread Length (l2) mm <i>inches</i>	Head Width (W) mm <i>inches</i>	Eye Width (W1) mm <i>inches</i>	Head Diameter (D) mm <i>inches</i>	Centre Height (l1) mm <i>inches</i>	Grease Nipple	Max Angle of Pivot Deg
# REF-060-L-CT-A	6.000 <i>0.236</i>	39.00 <i>1.535</i>	M6x1 Left	14.00 <i>0.551</i>	7.00 <i>0.276</i>	9.00 <i>0.354</i>	18.00 <i>0.709</i>	30.00 <i>1.181</i>	-	-
# REF-060-L-CT-B	6.000 <i>0.236</i>	39.00 <i>1.535</i>	M6x1 Left	14.00 <i>0.551</i>	6.75 <i>0.266</i>	9.00 <i>0.354</i>	18.00 <i>0.709</i>	30.00 <i>1.181</i>	-	-
# REF-060-R-CT-A	6.000 <i>0.236</i>	39.00 <i>1.535</i>	M6x1 Right	14.00 <i>0.551</i>	6.75 <i>0.266</i>	9.00 <i>0.354</i>	18.00 <i>0.709</i>	30.00 <i>1.181</i>	-	-
# REF-064-R-CT-B	6.350 <i>0.250</i>	-	1/4-28 UNF Right	17.45 <i>0.687</i>	7.14 <i>0.281</i>	9.53 <i>0.375</i>	19.05 <i>0.750</i>	33.33 <i>1.312</i>	-	-
# REF-064-R-CT-A	6.350 <i>0.250</i>	42.85 <i>1.687</i>	1/4-28 UNF Right	19.05 <i>0.750</i>	7.14 <i>0.281</i>	9.53 <i>0.375</i>	19.05 <i>0.750</i>	33.32 <i>1.312</i>	-	-
# REF-064-L-CT	6.350 <i>0.250</i>	42.85 <i>1.687</i>	1/4-28 UNF Left	19.05 <i>0.750</i>	7.14 <i>0.281</i>	9.53 <i>0.375</i>	19.05 <i>0.750</i>	33.32 <i>1.312</i>	-	-
REF-079-R-CT-A	7.938 <i>0.313</i>	-	5/16-24 UNF Right	17.45 <i>0.687</i>	8.73 <i>0.344</i>	11.11 <i>0.437</i>	22.23 <i>0.875</i>	34.93 <i>1.375</i>	-	-
# REF-079-R-CT-B	7.938 <i>0.313</i>	46.02 <i>1.812</i>	5/16-24 UNF Right	19.05 <i>0.750</i>	8.74 <i>0.344</i>	11.10 <i>0.437</i>	22.23 <i>0.875</i>	34.93 <i>1.375</i>	-	-
# REF-079-L-CT	7.938 <i>0.313</i>	46.02 <i>1.812</i>	5/16-24 UNF Left	19.05 <i>0.750</i>	8.74 <i>0.344</i>	11.10 <i>0.437</i>	22.23 <i>0.875</i>	34.93 <i>1.375</i>	-	-

Indicates item not stocked at time of printing - Please enquire for lead time

Page 5 of 12

E&OE Pricing and all details subject to change without notice - Copyright Miniature Bearings Australia Pty Ltd
MBA Size Listings are a guide to sizes only and must not be solely relied on for critical design information.

Rod Ends - Steel - PTFE Lined - Tight Fit - Female

Part Number	Eye Size (d1) mm <i>inches</i>	Overall Length (L) mm <i>inches</i>	Thread Size	Thread Length (l2) mm <i>inches</i>	Head Width (W) mm <i>inches</i>	Eye Width (W1) mm <i>inches</i>	Head Diameter (D) mm <i>inches</i>	Centre Height (l1) mm <i>inches</i>	Grease Nipple	Max Angle of Pivot Deg
# REF-080-R-CT-N	8.000 <i>0.315</i>	-	M8x1.25 Right	16.00 <i>0.630</i>	5.00 <i>0.197</i>	8.00 <i>0.315</i>	23.00 <i>0.906</i>	36.00 <i>1.417</i>	-	-
# REF-080-L-CT-N	8.000 <i>0.315</i>	-	M8x1.25 Left	16.00 <i>0.630</i>	5.00 <i>0.197</i>	8.00 <i>0.315</i>	23.00 <i>0.906</i>	36.00 <i>1.417</i>	-	-
# REF-080-L-CT-A	8.000 <i>0.315</i>	47.00 <i>1.850</i>	M8x1.25 Left	17.00 <i>0.669</i>	9.00 <i>0.354</i>	12.00 <i>0.472</i>	22.00 <i>0.866</i>	36.00 <i>1.417</i>	-	-
# REF-080-R-CT-A	8.000 <i>0.315</i>	47.00 <i>1.850</i>	M8x1.25 Right	17.00 <i>0.669</i>	9.00 <i>0.354</i>	12.00 <i>0.472</i>	22.00 <i>0.866</i>	36.00 <i>1.417</i>	-	-
# REF-095-R-CT	9.525 <i>0.375</i>	-	3/8-24 UNF Right	20.63 <i>0.812</i>	10.31 <i>0.406</i>	12.70 <i>0.500</i>	25.40 <i>1.000</i>	41.28 <i>1.625</i>	-	-
# REF-095-L-CT	9.525 <i>0.375</i>	53.98 <i>2.125</i>	3/8-24 UNF Left	23.80 <i>0.937</i>	10.31 <i>0.406</i>	12.70 <i>0.500</i>	25.40 <i>1.000</i>	41.28 <i>1.625</i>	-	-
# REF-100-L-CT-N	10.000 <i>0.394</i>	-	M10x1.5 Left	20.00 <i>0.787</i>	6.00 <i>0.236</i>	9.00 <i>0.354</i>	28.00 <i>1.102</i>	43.00 <i>1.693</i>	-	-
REF-100-R-CT-N	10.000 <i>0.394</i>	-	M10x1.5 Right	20.00 <i>0.787</i>	6.00 <i>0.236</i>	9.00 <i>0.354</i>	28.00 <i>1.102</i>	43.00 <i>1.693</i>	-	-
# REF-100-R-CT-B	10.000 <i>0.394</i>	56.00 <i>2.205</i>	M10x1.5 Right	21.00 <i>0.827</i>	11.00 <i>0.433</i>	14.00 <i>0.551</i>	26.00 <i>1.024</i>	43.00 <i>1.693</i>	-	-
# REF-100-R-CT-A	10.000 <i>0.394</i>	56.00 <i>2.205</i>	M10x1.5 Right	20.00 <i>0.787</i>	10.50 <i>0.413</i>	14.00 <i>0.551</i>	26.00 <i>1.024</i>	43.00 <i>1.693</i>	-	-

Indicates item not stocked at time of printing - Please enquire for lead time

Page 6 of 12

E&OE Pricing and all details subject to change without notice - Copyright Miniature Bearings Australia Pty Ltd
MBA Size Listings are a guide to sizes only and must not be solely relied on for critical design information.

Rod Ends - Steel - PTFE Lined - Tight Fit - Female

Part Number	Eye Size (d1) mm	Overall Length (L) mm	Thread Size	Thread Length (l2) mm	Head Width (W) mm	Eye Width (W1) mm	Head Diameter (D) mm	Centre Height (l1) mm	Grease Nipple	Max Angle of Pivot Deg
	<i>inches</i>	<i>inches</i>		<i>inches</i>	<i>inches</i>	<i>inches</i>	<i>inches</i>	<i>inches</i>		
# REF-100-L-CT-A	10.000 <i>0.394</i>	56.00 <i>2.205</i>	M10x1.5 Left	21.00 <i>0.827</i>	11.00 <i>0.433</i>	14.00 <i>0.551</i>	26.00 <i>1.024</i>	43.00 <i>1.693</i>	-	-
# REF-111-R-CT	11.113 <i>0.438</i>	60.33 <i>2.375</i>	7/16-20 UNF Right	26.97 <i>1.062</i>	11.10 <i>0.437</i>	14.27 <i>0.562</i>	28.58 <i>1.125</i>	46.02 <i>1.812</i>	-	-
# REF-111-L-CT	11.113 <i>0.438</i>	60.33 <i>2.375</i>	7/16-20 UNF Left	26.97 <i>1.062</i>	11.10 <i>0.437</i>	14.27 <i>0.562</i>	28.58 <i>1.125</i>	46.02 <i>1.812</i>	-	-
# REF-120-R-CT-N	12.000 <i>0.472</i>	-	M12x1.75 Right	22.00 <i>0.866</i>	7.00 <i>0.276</i>	10.00 <i>0.394</i>	32.00 <i>1.260</i>	50.00 <i>1.969</i>	-	-
# REF-120-L-CT-N	12.000 <i>0.472</i>	-	M12x1.75 Left	22.00 <i>0.866</i>	7.00 <i>0.276</i>	10.00 <i>0.394</i>	32.00 <i>1.260</i>	50.00 <i>1.969</i>	-	-
# REF-120-R-CT-B	12.000 <i>0.472</i>	65.00 <i>2.559</i>	M12x1.75 Right	22.00 <i>0.866</i>	12.00 <i>0.472</i>	16.00 <i>0.630</i>	30.00 <i>1.181</i>	50.00 <i>1.969</i>	-	-
# REF-120-R-CT-A	12.000 <i>0.472</i>	65.00 <i>2.559</i>	M12x1.75 Right	24.00 <i>0.945</i>	12.00 <i>0.472</i>	16.00 <i>0.630</i>	30.00 <i>1.181</i>	50.00 <i>1.969</i>	-	-
# REF-120-L-CT-A	12.000 <i>0.472</i>	65.00 <i>2.559</i>	M12x1.75 Left	24.00 <i>0.945</i>	12.00 <i>0.472</i>	16.00 <i>0.630</i>	30.00 <i>1.181</i>	50.00 <i>1.969</i>	-	-
# REF-120-L-CT-B	12.000 <i>0.472</i>	65.00 <i>2.559</i>	M12x1.75 Left	22.00 <i>0.866</i>	12.00 <i>0.472</i>	16.00 <i>0.630</i>	30.00 <i>1.181</i>	50.00 <i>1.969</i>	-	-

Indicates item not stocked at time of printing - Please enquire for lead time

Page 7 of 12

E&OE Pricing and all details subject to change without notice - Copyright Miniature Bearings Australia Pty Ltd
MBA Size Listings are a guide to sizes only and must not be solely relied on for critical design information.

Rod Ends - Steel - PTFE Lined - Tight Fit - Female

Part Number	Eye Size (d1) mm	Overall Length (L) mm	Thread Size	Thread Length (l2) mm	Head Width (W) mm	Eye Width (W1) mm	Head Diameter (D) mm	Centre Height (l1) mm	Grease Nipple	Max Angle of Pivot Deg
	<i>inches</i>	<i>inches</i>		<i>inches</i>	<i>inches</i>	<i>inches</i>	<i>inches</i>	<i>inches</i>		
# REF-127-R-CT	12.700	70.64	1/2-20 UNF Right	30.15	12.70	15.88	33.32	53.98	-	-
	<i>0.500</i>	<i>2.781</i>		<i>1.187</i>	<i>0.500</i>	<i>0.625</i>	<i>1.312</i>	<i>2.125</i>		
# REF-127-L-CT	12.700	70.64	1/2-20 UNF Left	30.15	12.70	15.88	33.32	53.98	-	-
	<i>0.500</i>	<i>2.781</i>		<i>1.187</i>	<i>0.500</i>	<i>0.625</i>	<i>1.312</i>	<i>2.125</i>		
# REF-140-L-CT-N-A	14.000	74.00	M14x2 Left	27.00	13.50	19.00	34.00	57.00	-	-
	<i>0.551</i>	<i>2.913</i>		<i>1.063</i>	<i>0.531</i>	<i>0.748</i>	<i>1.339</i>	<i>2.244</i>		
# REF-140-L-CT	14.000	74.00	M14x2 Left	27.00	14.00	19.00	34.00	57.00	-	-
	<i>0.551</i>	<i>2.913</i>		<i>1.063</i>	<i>0.551</i>	<i>0.748</i>	<i>1.339</i>	<i>2.244</i>		
# REF-140-R-CT	14.000	74.00	M14x2 Right	27.00	14.00	19.00	34.00	57.00	-	-
	<i>0.551</i>	<i>2.913</i>		<i>1.063</i>	<i>0.551</i>	<i>0.748</i>	<i>1.339</i>	<i>2.244</i>		
# REF-140-R-CT-N-A	14.000	74.00	M14x2 Right	27.00	13.50	19.00	34.00	57.00	-	-
	<i>0.551</i>	<i>2.913</i>		<i>1.063</i>	<i>0.531</i>	<i>0.748</i>	<i>1.339</i>	<i>2.244</i>		
# REF-150-R-CT-140	15.000	-	M14x2 Right	25.00	9.00	12.00	38.00	61.00	-	-
	<i>0.591</i>			<i>0.984</i>	<i>0.354</i>	<i>0.472</i>	<i>1.496</i>	<i>2.402</i>		
# REF-150-L-CT-140	15.000	-	M14x2 Left	25.00	9.00	12.00	38.00	61.00	-	-
	<i>0.591</i>			<i>0.984</i>	<i>0.354</i>	<i>0.472</i>	<i>1.496</i>	<i>2.402</i>		
# REF-159-R-CT-A	15.875	-	5/8-18 UNF Right	35.71	14.27	19.05	38.10	63.50	-	-
	<i>0.625</i>			<i>1.406</i>	<i>0.562</i>	<i>0.750</i>	<i>1.500</i>	<i>2.500</i>		

Indicates item not stocked at time of printing - Please enquire for lead time

Page 8 of 12

E&OE Pricing and all details subject to change without notice - Copyright Miniature Bearings Australia Pty Ltd
MBA Size Listings are a guide to sizes only and must not be solely relied on for critical design information.

Rod Ends - Steel - PTFE Lined - Tight Fit - Female

Part Number	Eye Size (d1) mm	Overall Length (L) mm	Thread Size	Thread Length (l2) mm	Head Width (W) mm	Eye Width (W1) mm	Head Diameter (D) mm	Centre Height (l1) mm	Grease Nipple	Max Angle of Pivot Deg
	<i>inches</i>	<i>inches</i>		<i>inches</i>	<i>inches</i>	<i>inches</i>	<i>inches</i>	<i>inches</i>		
# REF-159-R-CT-B	15.875	82.55	5/8-18 UNF Right	38.10	14.27	19.05	38.10	63.50	-	-
	<i>0.625</i>	<i>3.250</i>		<i>1.500</i>	<i>0.562</i>	<i>0.750</i>	<i>1.500</i>	<i>2.500</i>		
# REF-159-L-CT	15.875	82.55	5/8-18 UNF Left	38.10	14.27	19.05	38.10	63.50	-	-
	<i>0.625</i>	<i>3.250</i>		<i>1.500</i>	<i>0.562</i>	<i>0.750</i>	<i>1.500</i>	<i>2.500</i>		
# REF-160-L-CT-A	16.000	83.00	M16x2 Left	33.00	15.00	21.00	38.00	64.00	-	-
	<i>0.630</i>	<i>3.268</i>		<i>1.299</i>	<i>0.591</i>	<i>0.827</i>	<i>1.496</i>	<i>2.520</i>		
# REF-160-L-CT-B	16.000	83.00	M16x2 Left	33.00	15.00	21.00	38.00	64.00	-	-
	<i>0.630</i>	<i>3.268</i>		<i>1.299</i>	<i>0.591</i>	<i>0.827</i>	<i>1.496</i>	<i>2.520</i>		
# REF-160-R-CT-A	16.000	83.00	M16x2 Right	33.00	15.00	21.00	38.00	64.00	-	-
	<i>0.630</i>	<i>3.268</i>		<i>1.299</i>	<i>0.591</i>	<i>0.827</i>	<i>1.496</i>	<i>2.520</i>		
# REF-160-R-CT-B	16.000	83.00	M16x2 Right	33.00	15.00	21.00	38.00	64.00	-	-
	<i>0.630</i>	<i>3.268</i>		<i>1.299</i>	<i>0.591</i>	<i>0.827</i>	<i>1.496</i>	<i>2.520</i>		
# REF-170-R-CT-160	17.000	-	M16x2 Right	28.00	10.00	14.00	44.00	67.00	-	-
	<i>0.669</i>			<i>1.102</i>	<i>0.394</i>	<i>0.551</i>	<i>1.732</i>	<i>2.638</i>		
# REF-170-L-CT-160	17.000	-	M16x2 Left	28.00	10.00	14.00	44.00	67.00	-	-
	<i>0.669</i>			<i>1.102</i>	<i>0.394</i>	<i>0.551</i>	<i>1.732</i>	<i>2.638</i>		
# REF-180-R-CT	18.000	92.00	M18x1.5 Right	36.00	17.00	23.00	42.00	71.00	-	-
	<i>0.709</i>	<i>3.622</i>		<i>1.417</i>	<i>0.669</i>	<i>0.906</i>	<i>1.654</i>	<i>2.795</i>		
# REF-180-R-CT-N-A	18.000	92.00	M18x1.5 Right	36.00	16.50	23.00	42.00	71.00	-	-
	<i>0.709</i>	<i>3.622</i>		<i>1.417</i>	<i>0.650</i>	<i>0.906</i>	<i>1.654</i>	<i>2.795</i>		

Indicates item not stocked at time of printing - Please enquire for lead time

Page 9 of 12

E&OE Pricing and all details subject to change without notice - Copyright Miniature Bearings Australia Pty Ltd
MBA Size Listings are a guide to sizes only and must not be solely relied on for critical design information.

Rod Ends - Steel - PTFE Lined - Tight Fit - Female

Part Number	Eye Size (d1) mm	Overall Length (L) mm	Thread Size	Thread Length (l2) mm	Head Width (W) mm	Eye Width (W1) mm	Head Diameter (D) mm	Centre Height (l1) mm	Grease Nipple	Max Angle of Pivot Deg
	<i>inches</i>	<i>inches</i>		<i>inches</i>	<i>inches</i>	<i>inches</i>	<i>inches</i>	<i>inches</i>		
# REF-180-L-CT	18.000 <i>0.709</i>	92.00 <i>3.622</i>	M18x1.5 Left	36.00 <i>1.417</i>	17.00 <i>0.669</i>	23.00 <i>0.906</i>	42.00 <i>1.654</i>	71.00 <i>2.795</i>	-	-
# REF-191-L-CT	19.050 <i>0.750</i>	95.25 <i>3.750</i>	3/4-16 UNF Left	44.45 <i>1.750</i>	17.45 <i>0.687</i>	22.23 <i>0.875</i>	44.45 <i>1.750</i>	73.03 <i>2.875</i>	-	-
# REF-191-R-CT	19.050 <i>0.750</i>	95.25 <i>3.750</i>	3/4-16 UNF Right	44.45 <i>1.750</i>	17.45 <i>0.687</i>	22.23 <i>0.875</i>	44.45 <i>1.750</i>	73.03 <i>2.875</i>	-	-
# REF-200-R-CT-N	20.000 <i>0.787</i>	-	M20x1.5 Right	33.00 <i>1.299</i>	12.00 <i>0.472</i>	16.00 <i>0.630</i>	51.00 <i>2.008</i>	77.00 <i>3.031</i>	-	-
# REF-200-L-CT-N	20.000 <i>0.787</i>	-	M20x1.5 Left	33.00 <i>1.299</i>	12.00 <i>0.472</i>	16.00 <i>0.630</i>	51.00 <i>2.008</i>	77.00 <i>3.031</i>	-	-
# REF-200-L-CT-A	20.000 <i>0.787</i>	100.00 <i>3.937</i>	M20x1.5 Left	40.00 <i>1.575</i>	18.00 <i>0.709</i>	25.00 <i>0.984</i>	46.00 <i>1.811</i>	77.00 <i>3.031</i>	-	-
# REF-200-R-CT-A	20.000 <i>0.787</i>	100.00 <i>3.937</i>	M20x1.5 Right	40.00 <i>1.575</i>	18.00 <i>0.709</i>	25.00 <i>0.984</i>	46.00 <i>1.811</i>	77.00 <i>3.031</i>	-	-
# REF-220-R-CT-A	22.000 <i>0.866</i>	109.00 <i>4.291</i>	M22x1.5 Right	43.00 <i>1.693</i>	20.00 <i>0.787</i>	28.00 <i>1.102</i>	50.00 <i>1.969</i>	84.00 <i>3.307</i>	-	-
# REF-220-L-CT-A	22.000 <i>0.866</i>	109.00 <i>4.291</i>	M22x1.5 Left	43.00 <i>1.693</i>	20.00 <i>0.787</i>	28.00 <i>1.102</i>	50.00 <i>1.969</i>	84.00 <i>3.307</i>	-	-
# REF-250-R-CT-240-N	25.000 <i>0.984</i>	-	M24x2 Right	42.00 <i>1.654</i>	16.00 <i>0.630</i>	20.00 <i>0.787</i>	62.00 <i>2.441</i>	94.00 <i>3.701</i>	-	-

Indicates item not stocked at time of printing - Please enquire for lead time

Page 10 of 12

E&OE Pricing and all details subject to change without notice - Copyright Miniature Bearings Australia Pty Ltd
MBA Size Listings are a guide to sizes only and must not be solely relied on for critical design information.

Rod Ends - Steel - PTFE Lined - Tight Fit - Female

Part Number	Eye Size (d1) mm	Overall Length (L) mm	Thread Size	Thread Length (l2) mm	Head Width (W) mm	Eye Width (W1) mm	Head Diameter (D) mm	Centre Height (l1) mm	Grease Nipple	Max Angle of Pivot Deg
	<i>inches</i>	<i>inches</i>		<i>inches</i>	<i>inches</i>	<i>inches</i>	<i>inches</i>	<i>inches</i>		
# REF-250-L-CT-240-N	25.000 <i>0.984</i>	-	M24x2 Left	42.00 <i>1.654</i>	16.00 <i>0.630</i>	20.00 <i>0.787</i>	62.00 <i>2.441</i>	94.00 <i>3.701</i>	-	-
# REF-250-R-CT-240-A	25.000 <i>0.984</i>	122.00 <i>4.803</i>	M24x2 Right	48.00 <i>1.890</i>	22.00 <i>0.866</i>	31.00 <i>1.220</i>	56.00 <i>2.205</i>	94.00 <i>3.701</i>	-	-
# REF-250-L-CT-240-A	25.000 <i>0.984</i>	122.00 <i>4.803</i>	M24x2 Left	48.00 <i>1.890</i>	22.00 <i>0.866</i>	31.00 <i>1.220</i>	56.00 <i>2.205</i>	94.00 <i>3.701</i>	-	-
# REF-254-L-CT-318	25.400 <i>1.000</i>	143.50 <i>5.650</i>	1.1/4-12 UNF Left	55.30 <i>2.177</i>	24.50 <i>0.965</i>	34.90 <i>1.374</i>	67.00 <i>2.638</i>	110.00 <i>4.331</i>	-	-
# REF-254-R-CT-318	25.400 <i>1.000</i>	143.50 <i>5.650</i>	1.1/4-12 UNF Right	55.30 <i>2.177</i>	24.50 <i>0.965</i>	34.90 <i>1.374</i>	67.00 <i>2.638</i>	110.00 <i>4.331</i>	-	-
# REF-300-R-CT-N	30.000 <i>1.181</i>	-	M30x2 Right	51.00 <i>2.008</i>	18.00 <i>0.709</i>	22.00 <i>0.866</i>	70.00 <i>2.756</i>	110.00 <i>4.331</i>	-	-
# REF-300-L-CT-N	30.000 <i>1.181</i>	-	M30x2 Left	51.00 <i>2.008</i>	18.00 <i>0.709</i>	22.00 <i>0.866</i>	70.00 <i>2.756</i>	110.00 <i>4.331</i>	-	-
# REF-300-L-CT-A	30.000 <i>1.181</i>	143.50 <i>5.650</i>	M30x2 Left	56.00 <i>2.205</i>	26.00 <i>1.024</i>	37.00 <i>1.457</i>	67.00 <i>2.638</i>	110.00 <i>4.331</i>	-	-
# REF-300-R-CT-A	30.000 <i>1.181</i>	143.50 <i>5.650</i>	M30x2 Right	56.00 <i>2.205</i>	26.00 <i>1.024</i>	37.00 <i>1.457</i>	67.00 <i>2.638</i>	110.00 <i>4.331</i>	-	-
# REF-350-L-CT-360	35.000 <i>1.378</i>	-	M36x3 Left	36.00 <i>1.417</i>	20.00 <i>0.787</i>	25.00 <i>0.984</i>	82.00 <i>3.228</i>	125.00 <i>4.921</i>	-	-

Indicates item not stocked at time of printing - Please enquire for lead time

Page 11 of 12

E&OE Pricing and all details subject to change without notice - Copyright Miniature Bearings Australia Pty Ltd
MBA Size Listings are a guide to sizes only and must not be solely relied on for critical design information.

Rod Ends - Steel - PTFE Lined - Tight Fit - Female

Part Number	Eye Size (d1) mm	Overall Length (L) mm	Thread Size	Thread Length (l2) mm	Head Width (W) mm	Eye Width (W1) mm	Head Diameter (D) mm	Centre Height (l1) mm	Grease Nipple	Max Angle of Pivot Deg
	<i>inches</i>	<i>inches</i>		<i>inches</i>	<i>inches</i>	<i>inches</i>	<i>inches</i>	<i>inches</i>		
# REF-350-R-CT-360	35.000 <i>1.378</i>	-	M36x3 Right	36.00 <i>1.417</i>	20.00 <i>0.787</i>	25.00 <i>0.984</i>	82.00 <i>3.228</i>	125.00 <i>4.921</i>	-	-
# REF-400-L-CT-420	40.000 <i>1.575</i>	-	M42x3 Left	42.00 <i>1.654</i>	22.00 <i>0.866</i>	28.00 <i>1.102</i>	92.00 <i>3.622</i>	145.00 <i>5.709</i>	-	-
# REF-400-R-CT-420	40.000 <i>1.575</i>	-	M42x3 Right	42.00 <i>1.654</i>	22.00 <i>0.866</i>	28.00 <i>1.102</i>	92.00 <i>3.622</i>	145.00 <i>5.709</i>	-	-
# REF-450-L-CT	45.000 <i>1.772</i>	-	M45x3 Left	45.00 <i>1.772</i>	25.00 <i>0.984</i>	32.00 <i>1.260</i>	102.00 <i>4.016</i>	165.00 <i>6.496</i>	-	-
# REF-450-R-CT	45.000 <i>1.772</i>	-	M45x3 Right	45.00 <i>1.772</i>	25.00 <i>0.984</i>	32.00 <i>1.260</i>	102.00 <i>4.016</i>	165.00 <i>6.496</i>	-	-
# REF-500-L-CT-520	50.000 <i>1.969</i>	-	M52x3 Left	52.00 <i>2.047</i>	28.00 <i>1.102</i>	35.00 <i>1.378</i>	112.00 <i>4.409</i>	195.00 <i>7.677</i>	-	-
# REF-500-R-CT-520	50.000 <i>1.969</i>	-	M52x3 Right	52.00 <i>2.047</i>	28.00 <i>1.102</i>	35.00 <i>1.378</i>	112.00 <i>4.409</i>	195.00 <i>7.677</i>	-	-
# REF-600-R-CT	60.000 <i>2.362</i>	-	M60x4 Right	60.00 <i>2.362</i>	36.00 <i>1.417</i>	44.00 <i>1.732</i>	135.00 <i>5.315</i>	225.00 <i>8.858</i>	-	-
# REF-600-L-CT	60.000 <i>2.362</i>	-	M60x4 Left	60.00 <i>2.362</i>	36.00 <i>1.417</i>	44.00 <i>1.732</i>	135.00 <i>5.315</i>	225.00 <i>8.858</i>	-	-

Indicates item not stocked at time of printing - Please enquire for lead time

Page 12 of 12

E&OE Pricing and all details subject to change without notice - Copyright Miniature Bearings Australia Pty Ltd
MBA Size Listings are a guide to sizes only and must not be solely relied on for critical design information.

DISTRIBUTED BY

Distributed By:

