



Rod Ends - Steel - Studded - Swaged Construction - Female

10/4/2018

Indicates item not stocked at time of printing - Please enquire for lead time

E&OE Pricing and all details subject to change without notice - Copyright Miniature Bearings Australia Pty Ltd

MBA Size Listings are a guide to sizes only and must not be solely relied on for critical design information.

INFORMATION

Designed for heavy duty service, they come with dirt shield to provide protection against contaminants.

Unique assembly swages metal to retain the ball in cavity resulting in increased pull out and wear resistance.

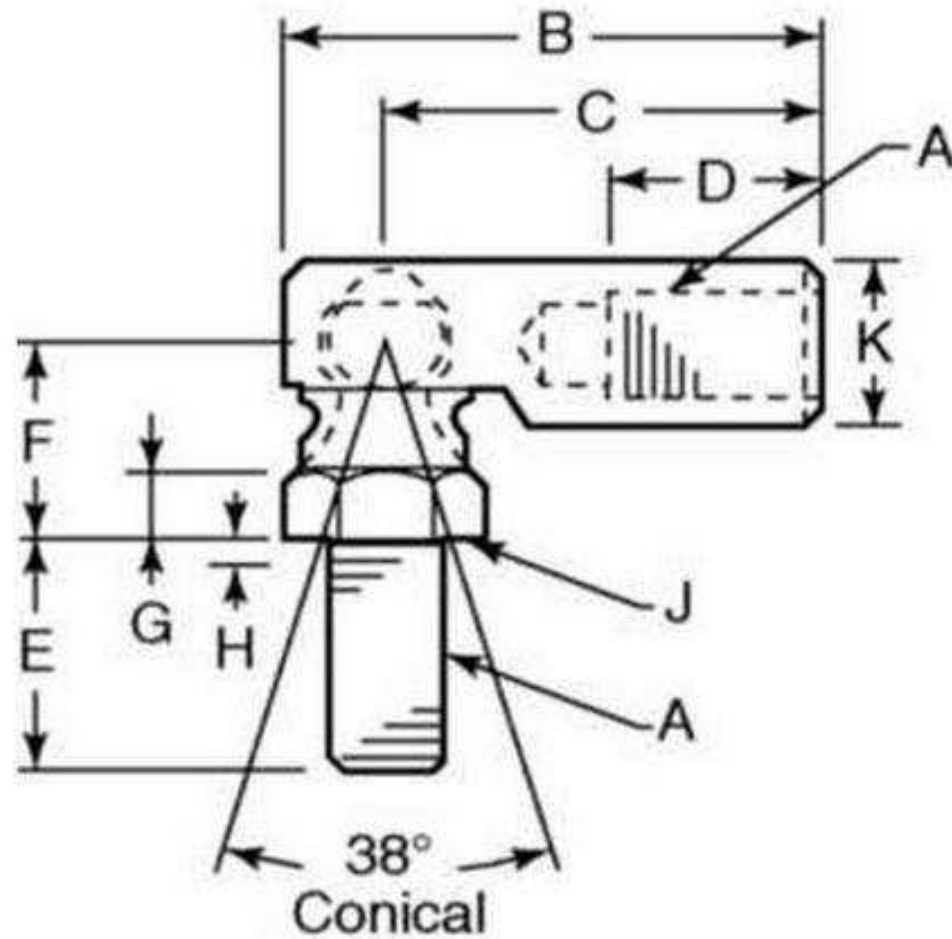
Ball studs are surface hardened.

Made of low carbon steel, plated and dichromate treated.

Indicates item not stocked at time of printing - Please enquire for lead time

E&OE Pricing and all details subject to change without notice - Copyright Miniature Bearings Australia Pty Ltd

MBA Size Listings are a guide to sizes only and must not be solely relied on for critical design information.



Indicates item not stocked at time of printing - Please enquire for lead time

E&OE Pricing and all details subject to change without notice - Copyright Miniature Bearings Australia Pty Ltd
MBA Size Listings are a guide to sizes only and must not be solely relied on for critical design information.

Rod Ends - Steel - Studed - Swaged Construction - Female

Part Number	Thread Size	Thread Length 1 mm	Thread Length 2 mm	Head Diameter mm	Centre Height mm	Top Width mm	Ball Width mm	Base Width mm	Base Length (P) mm
		<i>inches</i>	<i>inches</i>	<i>inches</i>	<i>inches</i>	<i>inches</i>	<i>inches</i>	<i>inches</i>	<i>inches</i>
# STQ30RS	10-32 UNF (4.762mm) Right Hand	11.11	11.11	09.53	22.23	-	-	-	22.23
		<i>0.437</i>	<i>0.437</i>	<i>0.375</i>	<i>0.875</i>				<i>0.875</i>
# STQ40RS	1/4-28 UNF (6.35mm) Right Hand	12.70	11.91	11.11	26.19	-	-	-	24.61
		<i>0.500</i>	<i>0.469</i>	<i>0.437</i>	<i>1.031</i>				<i>0.969</i>
# STQ50RS	3/8-24 UNF (9.525mm) Right Hand	19.05	17.46	15.88	39.69	-	-	-	34.93
		<i>0.750</i>	<i>0.687</i>	<i>0.625</i>	<i>1.563</i>				<i>1.375</i>

Indicates item not stocked at time of printing - Please enquire for lead time

Page 4 of 4

E&OE Pricing and all details subject to change without notice - Copyright Miniature Bearings Australia Pty Ltd
MBA Size Listings are a guide to sizes only and must not be solely relied on for critical design information.

DISTRIBUTED BY

Distributed By:

