



Rollers - Drive

10/4/2018

Indicates item not stocked at time of printing - Please enquire for lead time

E&OE Pricing and all details subject to change without notice - Copyright Miniature Bearings Australia Pty Ltd

MBA Size Listings are a guide to sizes only and must not be solely relied on for critical design information.

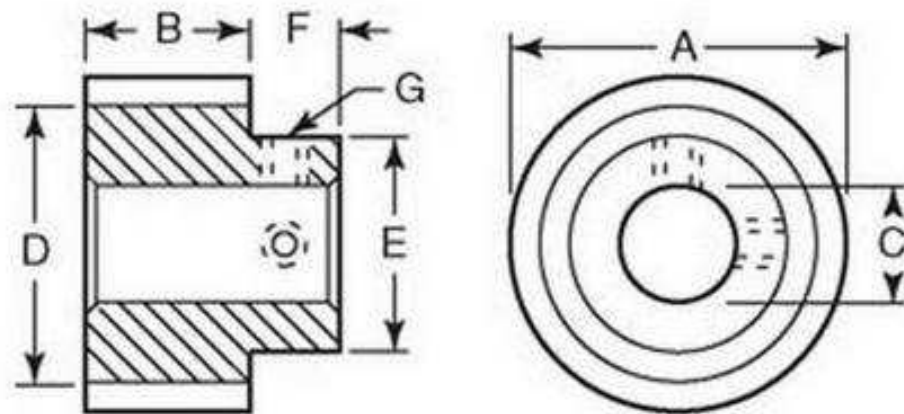
INFORMATION

Neoprene 60 durometer black ground outside diameter drive rollers

Indicates item not stocked at time of printing - Please enquire for lead time

E&OE Pricing and all details subject to change without notice - Copyright Miniature Bearings Australia Pty Ltd

MBA Size Listings are a guide to sizes only and must not be solely relied on for critical design information.



Indicates item not stocked at time of printing - Please enquire for lead time

E&OE Pricing and all details subject to change without notice - Copyright Miniature Bearings Australia Pty Ltd

MBA Size Listings are a guide to sizes only and must not be solely relied on for critical design information.

Rollers - Drive

Part Number	Outside Diameter (A)	Roller Width (B) mm	Bore (C) mm	Sleeve Diameter (D)	Hub Diameter (E) mm	Hub Height (F) mm	Set Screw
	mm			mm			
	<i>inches</i>	<i>inches</i>	<i>inches</i>	<i>inches</i>	<i>inches</i>	<i>inches</i>	
# RR1100RS	15.88 <i>0.625</i>	6.35 <i>0.250</i>	4.775 <i>0.188</i>	12.700 <i>0.500</i>	12.700 <i>0.500</i>	6.350 <i>0.250</i>	8-32 UNC
# RR1105RS	19.05 <i>0.750</i>	9.53 <i>0.375</i>	6.375 <i>0.251</i>	12.700 <i>0.500</i>	12.700 <i>0.500</i>	6.350 <i>0.250</i>	8-32 UNC
# RR1110RS	22.23 <i>0.875</i>	9.53 <i>0.375</i>	6.375 <i>0.251</i>	12.700 <i>0.500</i>	12.700 <i>0.500</i>	6.350 <i>0.250</i>	8-32 UNC
# RR1115RS	25.40 <i>1.000</i>	4.76 <i>0.187</i>	4.775 <i>0.188</i>	12.700 <i>0.500</i>	12.700 <i>0.500</i>	6.350 <i>0.250</i>	8-32 UNC
# RR1120RS	25.40 <i>1.000</i>	12.70 <i>0.500</i>	6.375 <i>0.251</i>	12.700 <i>0.500</i>	12.700 <i>0.500</i>	7.938 <i>0.313</i>	8-32 UNC
# RR1125RS	28.58 <i>1.125</i>	9.53 <i>0.375</i>	6.375 <i>0.251</i>	19.050 <i>0.750</i>	15.875 <i>0.625</i>	7.938 <i>0.313</i>	8-32 UNC (2)
# RR1130RS	41.28 <i>1.625</i>	12.70 <i>0.500</i>	9.550 <i>0.376</i>	28.575 <i>1.125</i>	22.225 <i>0.875</i>	9.525 <i>0.375</i>	10-32 UNF (2)
# RR1135RS	50.80 <i>2.000</i>	15.88 <i>0.625</i>	9.550 <i>0.376</i>	38.100 <i>1.500</i>	25.400 <i>1.000</i>	9.525 <i>0.375</i>	10-32 UNF (2)

Indicates item not stocked at time of printing - Please enquire for lead time

Page 4 of 4

E&OE Pricing and all details subject to change without notice - Copyright Miniature Bearings Australia Pty Ltd
MBA Size Listings are a guide to sizes only and must not be solely relied on for critical design information.

DISTRIBUTED BY

Distributed By:

