



Screws - Button - Socket - Alloy Steel

10/4/2018

Indicates item not stocked at time of printing - Please enquire for lead time

E&OE Pricing and all details subject to change without notice - Copyright Miniature Bearings Australia Pty Ltd

MBA Size Listings are a guide to sizes only and must not be solely relied on for critical design information.

Page 1 of 43

INFORMATION

UNC - UNF - METRIC.

Imperial Sizes to ANSI B18.3.

Metric Sizes to DIN7380.

This catalogue to be read in conjunction with information at <http://www.minibearings.com.au//partslist/toolssetsfoldup/tools/all/1/>

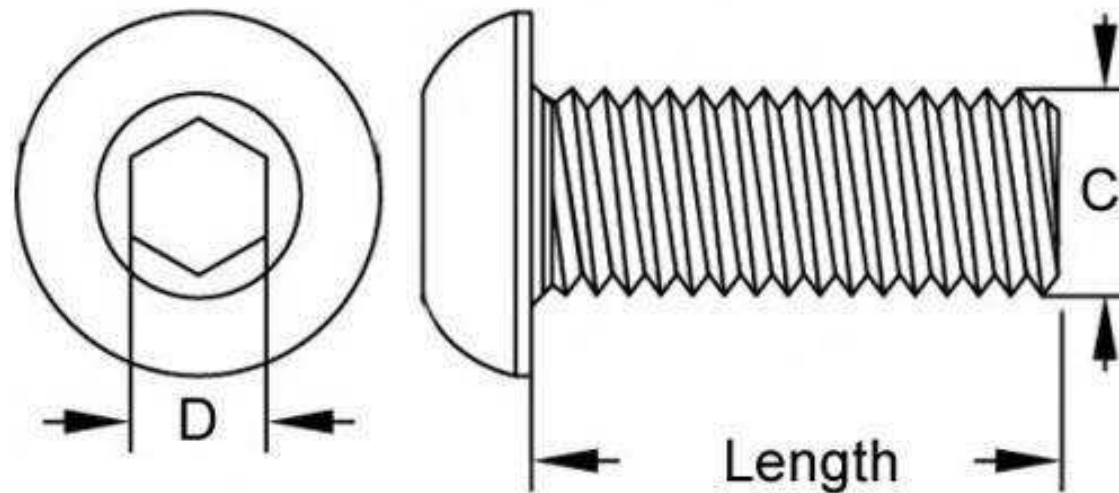
<http://www.minibearings.com.au//partslist/toolskeyshex/tools/all/1/>

<http://www.minibearings.com.au//partslist/toolsscrewdrivers/tools/all/1/>

Indicates item not stocked at time of printing - Please enquire for lead time

E&OE Pricing and all details subject to change without notice - Copyright Miniature Bearings Australia Pty Ltd

MBA Size Listings are a guide to sizes only and must not be solely relied on for critical design information.



Indicates item not stocked at time of printing - Please enquire for lead time

E&OE Pricing and all details subject to change without notice - Copyright Miniature Bearings Australia Pty Ltd

MBA Size Listings are a guide to sizes only and must not be solely relied on for critical design information.

Screws - Button - Socket - Alloy Steel

Part Number	Thread Size (C)	Length (L) mm	Material	Max Head Diameter mm	Max Head Height mm	Hex Key (D) mm	Pitch mm
		<i>inches</i>		<i>inches</i>	<i>inches</i>	<i>inches</i>	<i>inches</i>
SC015F-003-B-SK-C	0-80 UNF (1.524mm)	3.2 <i>0.126</i>	Alloy Steel	2.9 <i>0.114</i>	0.8 <i>0.031</i>	0.89 (0.035in.)	0.318 <i>0.013</i>
SC015F-005-B-SK-C	0-80 UNF (1.524mm)	4.8 <i>0.189</i>	Alloy Steel	2.9 <i>0.114</i>	0.8 <i>0.031</i>	0.89 (0.035in.)	0.318 <i>0.013</i>
SC015F-006-B-SK-C	0-80 UNF (1.524mm)	6.4 <i>0.252</i>	Alloy Steel	2.9 <i>0.114</i>	0.8 <i>0.031</i>	0.89 (0.035in.)	0.318 <i>0.013</i>
# SC015F-007-B-SK-C	0-80 UNF (1.524mm)	7.9 <i>0.311</i>	Alloy Steel	2.9 <i>0.114</i>	0.8 <i>0.031</i>	0.89 (0.035in.)	0.318 <i>0.013</i>
SC015F-010-B-SK-C	0-80 UNF (1.524mm)	9.5 <i>0.374</i>	Alloy Steel	2.9 <i>0.114</i>	0.8 <i>0.031</i>	0.89 (0.035in.)	0.318 <i>0.013</i>
# SC015F-013-B-SK-C	0-80 UNF (1.524mm)	12.7 <i>0.500</i>	Alloy Steel	2.9 <i>0.114</i>	0.8 <i>0.031</i>	0.89 (0.035in.)	0.318 <i>0.013</i>
# SC015F-016-B-SK-C	0-80 UNF (1.524mm)	15.9 <i>0.626</i>	Alloy Steel	2.9 <i>0.114</i>	0.8 <i>0.031</i>	0.89 (0.035in.)	0.318 <i>0.013</i>
SC019F-003-B-SK-C	1-72 UNF (1.854mm)	3.2 <i>0.126</i>	Alloy Steel	3.5 <i>0.138</i>	1.0 <i>0.039</i>	1.27 (0.050in.)	0.353 <i>0.014</i>
SC019F-005-B-SK-C	1-72 UNF (1.854mm)	4.8 <i>0.189</i>	Alloy Steel	3.5 <i>0.138</i>	1.0 <i>0.039</i>	1.27 (0.050in.)	0.353 <i>0.014</i>
SC019F-006-B-SK-C	1-72 UNF (1.854mm)	6.4 <i>0.252</i>	Alloy Steel	3.5 <i>0.138</i>	1.0 <i>0.039</i>	1.27 (0.050in.)	0.353 <i>0.014</i>

Indicates item not stocked at time of printing - Please enquire for lead time

Page 4 of 43

E&OE Pricing and all details subject to change without notice - Copyright Miniature Bearings Australia Pty Ltd

MBA Size Listings are a guide to sizes only and must not be solely relied on for critical design information.

Screws - Button - Socket - Alloy Steel

Part Number	Thread Size (C)	Length (L) mm	Material	Max Head Diameter mm	Max Head Height mm	Hex Key (D) mm	Pitch mm
		<i>inches</i>		<i>inches</i>	<i>inches</i>	<i>inches</i>	<i>inches</i>
# SC019F-007-B-SK-C	1-72 UNF (1.854mm)	7.9 <i>0.311</i>	Alloy Steel	3.5 <i>0.138</i>	1.0 <i>0.039</i>	1.27 (0.050in.)	0.353 <i>0.014</i>
SC019F-010-B-SK-C	1-72 UNF (1.854mm)	9.5 <i>0.374</i>	Alloy Steel	3.5 <i>0.138</i>	1.0 <i>0.039</i>	1.27 (0.050in.)	0.353 <i>0.014</i>
# SC019F-013-B-SK-C	1-72 UNF (1.854mm)	12.7 <i>0.500</i>	Alloy Steel	3.5 <i>0.138</i>	1.0 <i>0.039</i>	1.27 (0.050in.)	0.353 <i>0.014</i>
# SC019F-016-B-SK-C	1-72 UNF (1.854mm)	15.9 <i>0.626</i>	Alloy Steel	3.5 <i>0.138</i>	1.0 <i>0.039</i>	1.27 (0.050in.)	0.353 <i>0.014</i>
# SC019F-019-B-SK-C	1-72 UNF (1.854mm)	19.1 <i>0.752</i>	Alloy Steel	3.5 <i>0.138</i>	1.0 <i>0.039</i>	1.27 (0.050in.)	0.353 <i>0.014</i>
# SC019F-025-B-SK-C	1-72 UNF (1.854mm)	25.4 <i>1.000</i>	Alloy Steel	3.5 <i>0.138</i>	1.0 <i>0.039</i>	1.27 (0.050in.)	0.353 <i>0.014</i>
# SC022C-003-B-SK-C	2-56 UNC (2.184mm)	3.2 <i>0.126</i>	Alloy Steel	4.2 <i>0.165</i>	1.2 <i>0.047</i>	1.27 (0.050in.)	0.454 <i>0.018</i>
SC022C-005-B-SK-C	2-56 UNC (2.184mm)	4.8 <i>0.189</i>	Alloy Steel	4.2 <i>0.165</i>	1.2 <i>0.047</i>	1.27 (0.050in.)	0.454 <i>0.018</i>
SC022C-006-B-SK-C	2-56 UNC (2.184mm)	6.4 <i>0.252</i>	Alloy Steel	4.2 <i>0.165</i>	1.2 <i>0.047</i>	1.27 (0.050in.)	0.454 <i>0.018</i>
SC022C-007-B-SK-C	2-56 UNC (2.184mm)	7.9 <i>0.311</i>	Alloy Steel	4.2 <i>0.165</i>	1.2 <i>0.047</i>	1.27 (0.050in.)	0.454 <i>0.018</i>

Indicates item not stocked at time of printing - Please enquire for lead time

Page 5 of 43

E&OE Pricing and all details subject to change without notice - Copyright Miniature Bearings Australia Pty Ltd
MBA Size Listings are a guide to sizes only and must not be solely relied on for critical design information.

Screws - Button - Socket - Alloy Steel

Part Number	Thread Size (C)	Length (L) mm	Material	Max Head Diameter mm	Max Head Height mm	Hex Key (D) mm	Pitch mm
		<i>inches</i>		<i>inches</i>	<i>inches</i>	<i>inches</i>	<i>inches</i>
SC022C-010-B-SK-C	2-56 UNC (2.184mm)	9.5 <i>0.374</i>	Alloy Steel	4.2 <i>0.165</i>	1.2 <i>0.047</i>	1.27 (0.050in.)	0.454 <i>0.018</i>
SC022C-013-B-SK-C	2-56 UNC (2.184mm)	12.7 <i>0.500</i>	Alloy Steel	4.2 <i>0.165</i>	1.2 <i>0.047</i>	1.27 (0.050in.)	0.454 <i>0.018</i>
# SC022C-016-B-SK-C	2-56 UNC (2.184mm)	15.9 <i>0.626</i>	Alloy Steel	4.2 <i>0.165</i>	1.2 <i>0.047</i>	1.27 (0.050in.)	0.454 <i>0.018</i>
SC022C-019-B-SK-C	2-56 UNC (2.184mm)	19.1 <i>0.752</i>	Alloy Steel	4.2 <i>0.165</i>	1.2 <i>0.047</i>	1.27 (0.050in.)	0.454 <i>0.018</i>
SC022C-025-B-SK-C	2-56 UNC (2.184mm)	25.4 <i>1.000</i>	Alloy Steel	4.2 <i>0.165</i>	1.2 <i>0.047</i>	1.27 (0.050in.)	0.454 <i>0.018</i>
SC023M-006-B-SK-C	M2.3x0.40 (2.3mm)	6 <i>0.236</i>	Alloy Steel	-	-	-	0.400 <i>0.016</i>
SC025M-006-B-SK-C	M2.5x0.45 (2.5mm Standard)	6 <i>0.236</i>	Alloy Steel	4.4 <i>0.173</i>	1.4 <i>0.055</i>	2.00 <i>0.079</i>	0.450 <i>0.018</i>
# SC025C-005-B-SK-C	3-48 UNC (2.515mm)	4.8 <i>0.189</i>	Alloy Steel	4.8 <i>0.189</i>	1.3 <i>0.051</i>	1.59 (1/16)	0.529 <i>0.021</i>
# SC025C-006-B-SK-C	3-48 UNC (2.515mm)	6.4 <i>0.252</i>	Alloy Steel	4.8 <i>0.189</i>	1.3 <i>0.051</i>	1.59 (1/16)	0.529 <i>0.021</i>
# SC025C-007-B-SK-C	3-48 UNC (2.515mm)	7.9 <i>0.311</i>	Alloy Steel	4.8 <i>0.189</i>	1.3 <i>0.051</i>	1.59 (1/16)	0.529 <i>0.021</i>

Indicates item not stocked at time of printing - Please enquire for lead time

Page 6 of 43

E&OE Pricing and all details subject to change without notice - Copyright Miniature Bearings Australia Pty Ltd

MBA Size Listings are a guide to sizes only and must not be solely relied on for critical design information.

Screws - Button - Socket - Alloy Steel

Part Number	Thread Size (C)	Length (L) mm	Material	Max Head Diameter mm	Max Head Height mm	Hex Key (D) mm	Pitch mm
		<i>inches</i>		<i>inches</i>	<i>inches</i>	<i>inches</i>	<i>inches</i>
SC025C-010-B-SK-C	3-48 UNC (2.515mm)	9.5 <i>0.374</i>	Alloy Steel	4.8 <i>0.189</i>	1.3 <i>0.051</i>	1.59 (1/16)	0.529 <i>0.021</i>
# SC025C-011-B-SK-C	3-48 UNC (2.515mm)	11.1 <i>0.437</i>	Alloy Steel	4.8 <i>0.189</i>	1.3 <i>0.051</i>	1.59 (1/16)	0.529 <i>0.021</i>
# SC025C-013-B-SK-C	3-48 UNC (2.515mm)	12.7 <i>0.500</i>	Alloy Steel	4.8 <i>0.189</i>	1.3 <i>0.051</i>	1.59 (1/16)	0.529 <i>0.021</i>
# SC025C-016-B-SK-C	3-48 UNC (2.515mm)	15.9 <i>0.626</i>	Alloy Steel	4.8 <i>0.189</i>	1.3 <i>0.051</i>	1.59 (1/16)	0.529 <i>0.021</i>
# SC025C-019-B-SK-C	3-48 UNC (2.515mm)	19.1 <i>0.752</i>	Alloy Steel	4.8 <i>0.189</i>	1.3 <i>0.051</i>	1.59 (1/16)	0.529 <i>0.021</i>
# SC025C-025-B-SK-C	3-48 UNC (2.515mm)	25.4 <i>1.000</i>	Alloy Steel	4.8 <i>0.189</i>	1.3 <i>0.051</i>	1.59 (1/16)	0.529 <i>0.021</i>
# SC028C-005-B-SK-C	4-40 UNC (2.845mm)	4.8 <i>0.189</i>	Alloy Steel	5.4 <i>0.213</i>	1.5 <i>0.059</i>	1.59 (1/16)	0.635 <i>0.025</i>
SC028C-006-B-SK-C	4-40 UNC (2.845mm)	6.4 <i>0.252</i>	Alloy Steel	5.4 <i>0.213</i>	1.5 <i>0.059</i>	1.59 (1/16)	0.635 <i>0.025</i>
# SC028C-007-B-SK-C	4-40 UNC (2.845mm)	7.9 <i>0.311</i>	Alloy Steel	5.4 <i>0.213</i>	1.5 <i>0.059</i>	1.59 (1/16)	0.635 <i>0.025</i>
SC028C-010-B-SK-C	4-40 UNC (2.845mm)	9.5 <i>0.374</i>	Alloy Steel	5.4 <i>0.213</i>	1.5 <i>0.059</i>	1.59 (1/16)	0.635 <i>0.025</i>

Indicates item not stocked at time of printing - Please enquire for lead time

Page 7 of 43

E&OE Pricing and all details subject to change without notice - Copyright Miniature Bearings Australia Pty Ltd

MBA Size Listings are a guide to sizes only and must not be solely relied on for critical design information.

Screws - Button - Socket - Alloy Steel

Part Number	Thread Size (C)	Length (L) mm	Material	Max Head Diameter mm	Max Head Height mm	Hex Key (D) mm	Pitch mm
		<i>inches</i>		<i>inches</i>	<i>inches</i>	<i>inches</i>	<i>inches</i>
SC028C-013-B-SK-C	4-40 UNC (2.845mm)	12.7 <i>0.500</i>	Alloy Steel	5.4 <i>0.213</i>	1.5 <i>0.059</i>	1.59 (1/16)	0.635 <i>0.025</i>
# SC028C-016-B-SK-C	4-40 UNC (2.845mm)	15.9 <i>0.626</i>	Alloy Steel	5.4 <i>0.213</i>	1.5 <i>0.059</i>	1.59 (1/16)	0.635 <i>0.025</i>
# SC028C-019-B-SK-C	4-40 UNC (2.845mm)	19.1 <i>0.752</i>	Alloy Steel	5.4 <i>0.213</i>	1.5 <i>0.059</i>	1.59 (1/16)	0.635 <i>0.025</i>
# SC028C-022-B-SK-C	4-40 UNC (2.845mm)	22.2 <i>0.874</i>	Alloy Steel	5.4 <i>0.213</i>	1.5 <i>0.059</i>	1.59 (1/16)	0.635 <i>0.025</i>
# SC028C-025-B-SK-C	4-40 UNC (2.845mm)	25.4 <i>1.000</i>	Alloy Steel	5.4 <i>0.213</i>	1.5 <i>0.059</i>	1.59 (1/16)	0.635 <i>0.025</i>
SC030M-005-B-SK-C	M3x0.5 (3mm Standard)	5 <i>0.197</i>	Alloy Steel	5.7 <i>0.224</i>	1.7 <i>0.067</i>	2.00 <i>0.079</i>	0.500 <i>0.020</i>
SC030M-006-B-SK-C	M3x0.5 (3mm Standard)	6 <i>0.236</i>	Alloy Steel	5.7 <i>0.224</i>	1.7 <i>0.067</i>	2.00 <i>0.079</i>	0.500 <i>0.020</i>
SC030M-008-B-SK-C	M3x0.5 (3mm Standard)	8 <i>0.315</i>	Alloy Steel	5.7 <i>0.224</i>	1.7 <i>0.067</i>	2.00 <i>0.079</i>	0.500 <i>0.020</i>
SC030M-010-B-SK-C	M3x0.5 (3mm Standard)	10 <i>0.394</i>	Alloy Steel	5.7 <i>0.224</i>	1.7 <i>0.067</i>	2.00 <i>0.079</i>	0.500 <i>0.020</i>

Indicates item not stocked at time of printing - Please enquire for lead time

Page 8 of 43

E&OE Pricing and all details subject to change without notice - Copyright Miniature Bearings Australia Pty Ltd

MBA Size Listings are a guide to sizes only and must not be solely relied on for critical design information.

Screws - Button - Socket - Alloy Steel

Part Number	Thread Size (C)	Length (L) mm	Material	Max Head Diameter mm	Max Head Height mm	Hex Key (D) mm	Pitch mm
		<i>inches</i>		<i>inches</i>	<i>inches</i>	<i>inches</i>	<i>inches</i>
SC030M-012-B-SK-C	M3x0.5 (3mm Standard)	12 <i>0.472</i>	Alloy Steel	5.7 <i>0.224</i>	1.7 <i>0.067</i>	2.00 <i>0.079</i>	0.500 <i>0.020</i>
SC030M-016-B-SK-C	M3x0.5 (3mm Standard)	16 <i>0.630</i>	Alloy Steel	5.7 <i>0.224</i>	1.7 <i>0.067</i>	2.00 <i>0.079</i>	0.500 <i>0.020</i>
SC030M-020-B-SK-C	M3x0.5 (3mm Standard)	20 <i>0.787</i>	Alloy Steel	5.7 <i>0.224</i>	1.7 <i>0.067</i>	2.00 <i>0.079</i>	0.500 <i>0.020</i>
SC030M-025-B-SK-C	M3x0.5 (3mm Standard)	25 <i>0.984</i>	Alloy Steel	5.7 <i>0.224</i>	1.7 <i>0.067</i>	2.00 <i>0.079</i>	0.500 <i>0.020</i>
# SC030M-030-B-SK-C	M3x0.5 (3mm Standard)	30 <i>1.181</i>	Alloy Steel	5.7 <i>0.224</i>	1.7 <i>0.067</i>	2.00 <i>0.079</i>	0.500 <i>0.020</i>
# SC030M-040-B-SK-C	M3x0.5 (3mm Standard)	40 <i>1.575</i>	Alloy Steel	5.7 <i>0.224</i>	1.7 <i>0.067</i>	2.00 <i>0.079</i>	0.500 <i>0.020</i>
# SC032C-006-B-SK-C	5-40 UNC (3.175mm)	6.4 <i>0.252</i>	Alloy Steel	6.0 <i>0.236</i>	1.7 <i>0.067</i>	1.98 (5/64)	0.635 <i>0.025</i>
# SC032C-010-B-SK-C	5-40 UNC (3.175mm)	9.5 <i>0.374</i>	Alloy Steel	6.0 <i>0.236</i>	1.7 <i>0.067</i>	1.98 (5/64)	0.635 <i>0.025</i>
# SC032C-013-B-SK-C	5-40 UNC (3.175mm)	12.7 <i>0.500</i>	Alloy Steel	6.0 <i>0.236</i>	1.7 <i>0.067</i>	1.98 (5/64)	0.635 <i>0.025</i>

Indicates item not stocked at time of printing - Please enquire for lead time

Page 9 of 43

E&OE Pricing and all details subject to change without notice - Copyright Miniature Bearings Australia Pty Ltd
MBA Size Listings are a guide to sizes only and must not be solely relied on for critical design information.

Screws - Button - Socket - Alloy Steel

Part Number	Thread Size (C)	Length (L) mm	Material	Max Head Diameter mm	Max Head Height mm	Hex Key (D) mm	Pitch mm
		<i>inches</i>		<i>inches</i>	<i>inches</i>	<i>inches</i>	<i>inches</i>
# SC032C-016-B-SK-C	5-40 UNC (3.175mm)	15.9 <i>0.626</i>	Alloy Steel	6.0 <i>0.236</i>	1.7 <i>0.067</i>	1.98 (5/64)	0.635 <i>0.025</i>
# SC032C-019-B-SK-C	5-40 UNC (3.175mm)	19.1 <i>0.752</i>	Alloy Steel	6.0 <i>0.236</i>	1.7 <i>0.067</i>	1.98 (5/64)	0.635 <i>0.025</i>
# SC032C-025-B-SK-C	5-40 UNC (3.175mm)	25.4 <i>1.000</i>	Alloy Steel	6.0 <i>0.236</i>	1.7 <i>0.067</i>	1.98 (5/64)	0.635 <i>0.025</i>
# SC032C-032-B-SK-C	5-40 UNC (3.175mm)	31.8 <i>1.252</i>	Alloy Steel	6.0 <i>0.236</i>	1.7 <i>0.067</i>	1.98 (5/64)	0.635 <i>0.025</i>
# SC032C-038-B-SK-C	5-40 UNC (3.175mm)	38.1 <i>1.500</i>	Alloy Steel	6.0 <i>0.236</i>	1.7 <i>0.067</i>	1.98 (5/64)	0.635 <i>0.025</i>
SC035C-006-B-SK-C	6-32 UNC (3.5mm)	6.4 <i>0.252</i>	Alloy Steel	6.7 <i>0.264</i>	1.9 <i>0.075</i>	1.98 (5/64)	0.794 <i>0.031</i>
SC035C-007-B-SK-C	6-32 UNC (3.5mm)	7.9 <i>0.311</i>	Alloy Steel	6.7 <i>0.264</i>	1.9 <i>0.075</i>	1.98 (5/64)	0.794 <i>0.031</i>
SC035C-010-B-SK-C	6-32 UNC (3.5mm)	9.5 <i>0.374</i>	Alloy Steel	6.7 <i>0.264</i>	1.9 <i>0.075</i>	1.98 (5/64)	0.794 <i>0.031</i>
SC035C-013-B-SK-C	6-32 UNC (3.5mm)	12.7 <i>0.500</i>	Alloy Steel	6.7 <i>0.264</i>	1.9 <i>0.075</i>	1.98 (5/64)	0.794 <i>0.031</i>
# SC035C-016-B-SK-C	6-32 UNC (3.5mm)	15.9 <i>0.626</i>	Alloy Steel	6.7 <i>0.264</i>	1.9 <i>0.075</i>	1.98 (5/64)	0.794 <i>0.031</i>

Indicates item not stocked at time of printing - Please enquire for lead time

Page 10 of 43

E&OE Pricing and all details subject to change without notice - Copyright Miniature Bearings Australia Pty Ltd
MBA Size Listings are a guide to sizes only and must not be solely relied on for critical design information.

Screws - Button - Socket - Alloy Steel

Part Number	Thread Size (C)	Length (L) mm	Material	Max Head Diameter mm	Max Head Height mm	Hex Key (D) mm	Pitch mm
		<i>inches</i>		<i>inches</i>	<i>inches</i>	<i>inches</i>	<i>inches</i>
SC035C-019-B-SK-C	6-32 UNC (3.5mm)	19.1 <i>0.752</i>	Alloy Steel	6.7 <i>0.264</i>	1.9 <i>0.075</i>	1.98 (5/64)	0.794 <i>0.031</i>
# SC035C-022-B-SK-C	6-32 UNC (3.5mm)	22.2 <i>0.874</i>	Alloy Steel	6.7 <i>0.264</i>	1.9 <i>0.075</i>	1.98 (5/64)	0.794 <i>0.031</i>
# SC035C-025-B-SK-C	6-32 UNC (3.5mm)	25.4 <i>1.000</i>	Alloy Steel	6.7 <i>0.264</i>	1.9 <i>0.075</i>	1.98 (5/64)	0.794 <i>0.031</i>
# SC035C-032-B-SK-C	6-32 UNC (3.5mm)	31.8 <i>1.252</i>	Alloy Steel	6.7 <i>0.264</i>	1.9 <i>0.075</i>	1.98 (5/64)	0.794 <i>0.031</i>
# SC035C-038-B-SK-C	6-32 UNC (3.5mm)	38.1 <i>1.500</i>	Alloy Steel	6.7 <i>0.264</i>	1.9 <i>0.075</i>	1.98 (5/64)	0.794 <i>0.031</i>
# SC035C-045-B-SK-C	6-32 UNC (3.5mm)	44.5 <i>1.752</i>	Alloy Steel	6.7 <i>0.264</i>	1.9 <i>0.075</i>	1.98 (5/64)	0.794 <i>0.031</i>
# SC035C-051-B-SK-C	6-32 UNC (3.5mm)	50.8 <i>2.000</i>	Alloy Steel	6.7 <i>0.264</i>	1.9 <i>0.075</i>	1.98 (5/64)	0.794 <i>0.031</i>
# SC035C-057-B-SK-C	6-32 UNC (3.5mm)	57.2 <i>2.252</i>	Alloy Steel	6.7 <i>0.264</i>	1.9 <i>0.075</i>	1.98 (5/64)	0.794 <i>0.031</i>
# SC035C-064-B-SK-C	6-32 UNC (3.5mm)	63.5 <i>2.500</i>	Alloy Steel	6.7 <i>0.264</i>	1.9 <i>0.075</i>	1.98 (5/64)	0.794 <i>0.031</i>
# SC035C-076-B-SK-C	6-32 UNC (3.5mm)	76.2 <i>3.000</i>	Alloy Steel	6.7 <i>0.264</i>	1.9 <i>0.075</i>	1.98 (5/64)	0.794 <i>0.031</i>

Indicates item not stocked at time of printing - Please enquire for lead time

Page 11 of 43

E&OE Pricing and all details subject to change without notice - Copyright Miniature Bearings Australia Pty Ltd

MBA Size Listings are a guide to sizes only and must not be solely relied on for critical design information.

Screws - Button - Socket - Alloy Steel

Part Number	Thread Size (C)	Length (L) mm	Material	Max Head Diameter mm	Max Head Height mm	Hex Key (D) mm	Pitch mm
		<i>inches</i>		<i>inches</i>	<i>inches</i>	<i>inches</i>	<i>inches</i>
# SC035F-006-B-SK-C	6-40 UNF (3.5mm)	6.4 <i>0.252</i>	Alloy Steel	6.7 <i>0.264</i>	1.9 <i>0.075</i>	1.98 (5/64)	0.635 <i>0.025</i>
SC035F-010-B-SK-C	6-40 UNF (3.5mm)	9.5 <i>0.374</i>	Alloy Steel	6.7 <i>0.264</i>	1.9 <i>0.075</i>	1.98 (5/64)	0.635 <i>0.025</i>
# SC035F-013-B-SK-C	6-40 UNF (3.5mm)	12.7 <i>0.500</i>	Alloy Steel	6.7 <i>0.264</i>	1.9 <i>0.075</i>	1.98 (5/64)	0.635 <i>0.025</i>
# SC035F-016-B-SK-C	6-40 UNF (3.5mm)	15.9 <i>0.626</i>	Alloy Steel	6.7 <i>0.264</i>	1.9 <i>0.075</i>	1.98 (5/64)	0.635 <i>0.025</i>
# SC035F-019-B-SK-C	6-40 UNF (3.5mm)	19.1 <i>0.752</i>	Alloy Steel	6.7 <i>0.264</i>	1.9 <i>0.075</i>	1.98 (5/64)	0.635 <i>0.025</i>
# SC035F-025-B-SK-C	6-40 UNF (3.5mm)	25.4 <i>1.000</i>	Alloy Steel	6.7 <i>0.264</i>	1.9 <i>0.075</i>	1.98 (5/64)	0.635 <i>0.025</i>
SC040M-004-B-SK-C	M4x0.7 (4mm Standard)	4 <i>0.157</i>	Alloy Steel	7.6 <i>0.299</i>	2.2 <i>0.087</i>	2.50 <i>0.098</i>	0.700 <i>0.028</i>
SC040M-006-B-SK-C	M4x0.7 (4mm Standard)	6 <i>0.236</i>	Alloy Steel	7.6 <i>0.299</i>	2.2 <i>0.087</i>	2.50 <i>0.098</i>	0.700 <i>0.028</i>
SC040M-008-B-SK-C	M4x0.7 (4mm Standard)	8 <i>0.315</i>	Alloy Steel	7.6 <i>0.299</i>	2.2 <i>0.087</i>	2.50 <i>0.098</i>	0.700 <i>0.028</i>

Indicates item not stocked at time of printing - Please enquire for lead time

Page 12 of 43

E&OE Pricing and all details subject to change without notice - Copyright Miniature Bearings Australia Pty Ltd
MBA Size Listings are a guide to sizes only and must not be solely relied on for critical design information.

Screws - Button - Socket - Alloy Steel

Part Number	Thread Size (C)	Length (L) mm	Material	Max Head Diameter mm	Max Head Height mm	Hex Key (D) mm	Pitch mm
		<i>inches</i>		<i>inches</i>	<i>inches</i>	<i>inches</i>	<i>inches</i>
SC040M-010-B-SK-C	M4x0.7 (4mm Standard)	10 <i>0.394</i>	Alloy Steel	7.6 <i>0.299</i>	2.2 <i>0.087</i>	2.50 <i>0.098</i>	0.700 <i>0.028</i>
SC040M-012-B-SK-C	M4x0.7 (4mm Standard)	12 <i>0.472</i>	Alloy Steel	7.6 <i>0.299</i>	2.2 <i>0.087</i>	2.50 <i>0.098</i>	0.700 <i>0.028</i>
SC040M-016-B-SK-C	M4x0.7 (4mm Standard)	16 <i>0.630</i>	Alloy Steel	7.6 <i>0.299</i>	2.2 <i>0.087</i>	2.50 <i>0.098</i>	0.700 <i>0.028</i>
# SC040M-018-B-SK-C	M4x0.7 (4mm Standard)	18 <i>0.709</i>	Alloy Steel	7.6 <i>0.299</i>	2.2 <i>0.087</i>	2.50 <i>0.098</i>	0.700 <i>0.028</i>
SC040M-020-B-SK-C	M4x0.7 (4mm Standard)	20 <i>0.787</i>	Alloy Steel	7.6 <i>0.299</i>	2.2 <i>0.087</i>	2.50 <i>0.098</i>	0.700 <i>0.028</i>
# SC040M-025-B-SK-C	M4x0.7 (4mm Standard)	25 <i>0.984</i>	Alloy Steel	7.6 <i>0.299</i>	2.2 <i>0.087</i>	2.50 <i>0.098</i>	0.700 <i>0.028</i>
SC040M-030-B-SK-C	M4x0.7 (4mm Standard)	30 <i>1.181</i>	Alloy Steel	7.6 <i>0.299</i>	2.2 <i>0.087</i>	2.50 <i>0.098</i>	0.700 <i>0.028</i>
SC040M-035-B-SK-C	M4x0.7 (4mm Standard)	35 <i>1.378</i>	Alloy Steel	7.6 <i>0.299</i>	2.2 <i>0.087</i>	2.50 <i>0.098</i>	0.700 <i>0.028</i>

Indicates item not stocked at time of printing - Please enquire for lead time

Page 13 of 43

E&OE Pricing and all details subject to change without notice - Copyright Miniature Bearings Australia Pty Ltd
MBA Size Listings are a guide to sizes only and must not be solely relied on for critical design information.

Screws - Button - Socket - Alloy Steel

Part Number	Thread Size (C)	Length (L) mm	Material	Max Head Diameter mm	Max Head Height mm	Hex Key (D) mm	Pitch mm
		<i>inches</i>		<i>inches</i>	<i>inches</i>	<i>inches</i>	<i>inches</i>
SC040M-040-B-SK-C	M4x0.7 (4mm Standard)	40 <i>1.575</i>	Alloy Steel	7.6 <i>0.299</i>	2.2 <i>0.087</i>	2.50 <i>0.098</i>	0.700 <i>0.028</i>
# SC040M-045-B-SK-C	M4x0.7 (4mm Standard)	45 <i>1.772</i>	Alloy Steel	7.6 <i>0.299</i>	2.2 <i>0.087</i>	2.50 <i>0.098</i>	0.700 <i>0.028</i>
SC040M-050-B-SK-C	M4x0.7 (4mm Standard)	50 <i>1.969</i>	Alloy Steel	7.6 <i>0.299</i>	2.2 <i>0.087</i>	2.50 <i>0.098</i>	0.700 <i>0.028</i>
# SC042C-005-B-SK-C	8-32 UNC (4.166mm)	4.8 <i>0.189</i>	Alloy Steel	7.9 <i>0.311</i>	2.2 <i>0.087</i>	2.38 (3/32)	0.794 <i>0.031</i>
SC042C-006-B-SK-C	8-32 UNC (4.166mm)	6.4 <i>0.252</i>	Alloy Steel	7.9 <i>0.311</i>	2.2 <i>0.087</i>	2.38 (3/32)	0.794 <i>0.031</i>
SC042C-007-B-SK-C	8-32 UNC (4.166mm)	7.9 <i>0.311</i>	Alloy Steel	7.9 <i>0.311</i>	2.2 <i>0.087</i>	2.38 (3/32)	0.794 <i>0.031</i>
SC042C-010-B-SK-C	8-32 UNC (4.166mm)	9.5 <i>0.374</i>	Alloy Steel	7.9 <i>0.311</i>	2.2 <i>0.087</i>	2.38 (3/32)	0.794 <i>0.031</i>
SC042C-013-B-SK-C	8-32 UNC (4.166mm)	12.7 <i>0.500</i>	Alloy Steel	7.9 <i>0.311</i>	2.2 <i>0.087</i>	2.38 (3/32)	0.794 <i>0.031</i>
# SC042C-016-B-SK-C	8-32 UNC (4.166mm)	15.9 <i>0.626</i>	Alloy Steel	7.9 <i>0.311</i>	2.2 <i>0.087</i>	2.38 (3/32)	0.794 <i>0.031</i>

Indicates item not stocked at time of printing - Please enquire for lead time

Page 14 of 43

E&OE Pricing and all details subject to change without notice - Copyright Miniature Bearings Australia Pty Ltd
MBA Size Listings are a guide to sizes only and must not be solely relied on for critical design information.

Screws - Button - Socket - Alloy Steel

Part Number	Thread Size (C)	Length (L) mm	Material	Max Head Diameter mm	Max Head Height mm	Hex Key (D) mm	Pitch mm
		<i>inches</i>		<i>inches</i>	<i>inches</i>	<i>inches</i>	<i>inches</i>
# SC042C-019-B-SK-C	8-32 UNC (4.166mm)	19.1 <i>0.752</i>	Alloy Steel	7.9 <i>0.311</i>	2.2 <i>0.087</i>	2.38 (3/32)	0.794 <i>0.031</i>
# SC042C-022-B-SK-C	8-32 UNC (4.166mm)	22.2 <i>0.874</i>	Alloy Steel	7.9 <i>0.311</i>	2.2 <i>0.087</i>	2.38 (3/32)	0.794 <i>0.031</i>
# SC042C-025-B-SK-C	8-32 UNC (4.166mm)	25.4 <i>1.000</i>	Alloy Steel	7.9 <i>0.311</i>	2.2 <i>0.087</i>	2.38 (3/32)	0.794 <i>0.031</i>
# SC042C-032-B-SK-C	8-32 UNC (4.166mm)	31.8 <i>1.252</i>	Alloy Steel	7.9 <i>0.311</i>	2.2 <i>0.087</i>	2.38 (3/32)	0.794 <i>0.031</i>
# SC042C-038-B-SK-C	8-32 UNC (4.166mm)	38.1 <i>1.500</i>	Alloy Steel	7.9 <i>0.311</i>	2.2 <i>0.087</i>	2.38 (3/32)	0.794 <i>0.031</i>
# SC042C-045-B-SK-C	8-32 UNC (4.166mm)	44.5 <i>1.752</i>	Alloy Steel	7.9 <i>0.311</i>	2.2 <i>0.087</i>	2.38 (3/32)	0.794 <i>0.031</i>
# SC042C-051-B-SK-C	8-32 UNC (4.166mm)	50.8 <i>2.000</i>	Alloy Steel	7.9 <i>0.311</i>	2.2 <i>0.087</i>	2.38 (3/32)	0.794 <i>0.031</i>
# SC042F-006-B-SK-C	8-36 UNF (4.166mm)	6.4 <i>0.252</i>	Alloy Steel	7.9 <i>0.311</i>	2.2 <i>0.087</i>	2.38 (3/32)	0.706 <i>0.028</i>
# SC042F-010-B-SK-C	8-36 UNF (4.166mm)	9.5 <i>0.374</i>	Alloy Steel	7.9 <i>0.311</i>	2.2 <i>0.087</i>	2.38 (3/32)	0.706 <i>0.028</i>
# SC042F-013-B-SK-C	8-36 UNF (4.166mm)	12.7 <i>0.500</i>	Alloy Steel	7.9 <i>0.311</i>	2.2 <i>0.087</i>	2.38 (3/32)	0.706 <i>0.028</i>

Indicates item not stocked at time of printing - Please enquire for lead time

Page 15 of 43

E&OE Pricing and all details subject to change without notice - Copyright Miniature Bearings Australia Pty Ltd
MBA Size Listings are a guide to sizes only and must not be solely relied on for critical design information.

Screws - Button - Socket - Alloy Steel

Part Number	Thread Size (C)	Length (L) mm	Material	Max Head Diameter mm	Max Head Height mm	Hex Key (D) mm	Pitch mm
		<i>inches</i>		<i>inches</i>	<i>inches</i>	<i>inches</i>	<i>inches</i>
# SC042F-016-B-SK-C	8-36 UNF (4.166mm)	15.9 <i>0.626</i>	Alloy Steel	7.9 <i>0.311</i>	2.2 <i>0.087</i>	2.38 (3/32)	0.706 <i>0.028</i>
# SC042F-019-B-SK-C	8-36 UNF (4.166mm)	19.1 <i>0.752</i>	Alloy Steel	7.9 <i>0.311</i>	2.2 <i>0.087</i>	2.38 (3/32)	0.706 <i>0.028</i>
# SC042F-025-B-SK-C	8-36 UNF (4.166mm)	25.4 <i>1.000</i>	Alloy Steel	7.9 <i>0.311</i>	2.2 <i>0.087</i>	2.38 (3/32)	0.706 <i>0.028</i>
SC048C-006-B-SK-C	10-24 UNC (4.762mm)	6.4 <i>0.252</i>	Alloy Steel	9.2 <i>0.362</i>	2.6 <i>0.102</i>	3.18 (1/8)	1.058 <i>0.042</i>
# SC048C-007-B-SK-C	10-24 UNC (4.762mm)	7.9 <i>0.311</i>	Alloy Steel	9.2 <i>0.362</i>	2.6 <i>0.102</i>	3.18 (1/8)	1.058 <i>0.042</i>
# SC048C-010-B-SK-C	10-24 UNC (4.762mm)	9.5 <i>0.374</i>	Alloy Steel	9.2 <i>0.362</i>	2.6 <i>0.102</i>	3.18 (1/8)	1.058 <i>0.042</i>
SC048C-013-B-SK-C	10-24 UNC (4.762mm)	12.7 <i>0.500</i>	Alloy Steel	9.2 <i>0.362</i>	2.6 <i>0.102</i>	3.18 (1/8)	1.058 <i>0.042</i>
# SC048C-016-B-SK-C	10-24 UNC (4.762mm)	15.9 <i>0.626</i>	Alloy Steel	9.2 <i>0.362</i>	2.6 <i>0.102</i>	3.18 (1/8)	1.058 <i>0.042</i>
SC048C-019-B-SK-C	10-24 UNC (4.762mm)	19.1 <i>0.752</i>	Alloy Steel	9.2 <i>0.362</i>	2.6 <i>0.102</i>	3.18 (1/8)	1.058 <i>0.042</i>
# SC048C-022-B-SK-C	10-24 UNC (4.762mm)	22.2 <i>0.874</i>	Alloy Steel	9.2 <i>0.362</i>	2.6 <i>0.102</i>	3.18 (1/8)	1.058 <i>0.042</i>

Indicates item not stocked at time of printing - Please enquire for lead time

Page 16 of 43

E&OE Pricing and all details subject to change without notice - Copyright Miniature Bearings Australia Pty Ltd
MBA Size Listings are a guide to sizes only and must not be solely relied on for critical design information.

Screws - Button - Socket - Alloy Steel

Part Number	Thread Size (C)	Length (L) mm	Material	Max Head Diameter mm	Max Head Height mm	Hex Key (D) mm	Pitch mm
		<i>inches</i>		<i>inches</i>	<i>inches</i>	<i>inches</i>	<i>inches</i>
SC048C-025-B-SK-C	10-24 UNC (4.762mm)	25.4 <i>1.000</i>	Alloy Steel	9.2 <i>0.362</i>	2.6 <i>0.102</i>	3.18 (1/8)	1.058 <i>0.042</i>
SC048C-032-B-SK-C	10-24 UNC (4.762mm)	31.8 <i>1.252</i>	Alloy Steel	9.2 <i>0.362</i>	2.6 <i>0.102</i>	3.18 (1/8)	1.058 <i>0.042</i>
# SC048C-038-B-SK-C	10-24 UNC (4.762mm)	38.1 <i>1.500</i>	Alloy Steel	9.2 <i>0.362</i>	2.6 <i>0.102</i>	3.18 (1/8)	1.058 <i>0.042</i>
# SC048C-045-B-SK-C	10-24 UNC (4.762mm)	44.5 <i>1.752</i>	Alloy Steel	9.2 <i>0.362</i>	2.6 <i>0.102</i>	3.18 (1/8)	1.058 <i>0.042</i>
# SC048C-051-B-SK-C	10-24 UNC (4.762mm)	50.8 <i>2.000</i>	Alloy Steel	9.2 <i>0.362</i>	2.6 <i>0.102</i>	3.18 (1/8)	1.058 <i>0.042</i>
# SC048C-057-B-SK-C	10-24 UNC (4.762mm)	57.2 <i>2.252</i>	Alloy Steel	9.2 <i>0.362</i>	2.6 <i>0.102</i>	3.18 (1/8)	1.058 <i>0.042</i>
# SC048C-064-B-SK-C	10-24 UNC (4.762mm)	63.5 <i>2.500</i>	Alloy Steel	9.2 <i>0.362</i>	2.6 <i>0.102</i>	3.18 (1/8)	1.058 <i>0.042</i>
# SC048W-010-B-SK-C	3/16-24 BSW (4.762mm)	9.5 <i>0.374</i>	Alloy Steel	9.2 <i>0.362</i>	2.6 <i>0.102</i>	3.97 (5/32)	1.058 <i>0.042</i>
# SC048W-013-B-SK-C	3/16-24 BSW (4.762mm)	12.7 <i>0.500</i>	Alloy Steel	9.2 <i>0.362</i>	2.6 <i>0.102</i>	3.97 (5/32)	1.058 <i>0.042</i>

Indicates item not stocked at time of printing - Please enquire for lead time

Page 17 of 43

E&OE Pricing and all details subject to change without notice - Copyright Miniature Bearings Australia Pty Ltd

MBA Size Listings are a guide to sizes only and must not be solely relied on for critical design information.

Screws - Button - Socket - Alloy Steel

Part Number	Thread Size (C)	Length (L) mm	Material	Max Head Diameter mm	Max Head Height mm	Hex Key (D) mm	Pitch mm
		<i>inches</i>		<i>inches</i>	<i>inches</i>	<i>inches</i>	<i>inches</i>
# SC048W-016-B-SK-C	3/16-24 BSW (4.762mm)	15.90 <i>0.626</i>	Alloy Steel	9.2 <i>0.362</i>	2.6 <i>0.102</i>	3.97 (5/32)	1.058 <i>0.042</i>
# SC048W-019-B-SK-C	3/16-24 BSW (4.762mm)	19.1 <i>0.752</i>	Alloy Steel	9.2 <i>0.362</i>	2.6 <i>0.102</i>	3.97 (5/32)	1.058 <i>0.042</i>
# SC048W-025-B-SK-C	3/16-24 BSW (4.762mm)	25.40 <i>1.000</i>	Alloy Steel	9.2 <i>0.362</i>	2.6 <i>0.102</i>	3.97 (5/32)	1.058 <i>0.042</i>
SC048F-006-B-SK-C	10-32 UNF (4.762mm)	6.4 <i>0.252</i>	Alloy Steel	9.2 <i>0.362</i>	2.6 <i>0.102</i>	3.18 (1/8)	0.794 <i>0.031</i>
# SC048F-007-B-SK-C	10-32 UNF (4.762mm)	7.9 <i>0.311</i>	Alloy Steel	9.2 <i>0.362</i>	2.6 <i>0.102</i>	3.18 (1/8)	0.794 <i>0.031</i>
# SC048F-010-B-SK-C	10-32 UNF (4.762mm)	9.5 <i>0.374</i>	Alloy Steel	9.2 <i>0.362</i>	2.6 <i>0.102</i>	3.18 (1/8)	0.794 <i>0.031</i>
SC048F-013-B-SK-C	10-32 UNF (4.762mm)	12.7 <i>0.500</i>	Alloy Steel	9.2 <i>0.362</i>	2.6 <i>0.102</i>	3.18 (1/8)	0.794 <i>0.031</i>
# SC048F-016-B-SK-C	10-32 UNF (4.762mm)	15.9 <i>0.626</i>	Alloy Steel	9.2 <i>0.362</i>	2.6 <i>0.102</i>	3.18 (1/8)	0.794 <i>0.031</i>
SC048F-019-B-SK-C	10-32 UNF (4.762mm)	19.1 <i>0.752</i>	Alloy Steel	9.2 <i>0.362</i>	2.6 <i>0.102</i>	3.18 (1/8)	0.794 <i>0.031</i>

Indicates item not stocked at time of printing - Please enquire for lead time

Page 18 of 43

E&OE Pricing and all details subject to change without notice - Copyright Miniature Bearings Australia Pty Ltd
MBA Size Listings are a guide to sizes only and must not be solely relied on for critical design information.

Screws - Button - Socket - Alloy Steel

Part Number	Thread Size (C)	Length (L) mm	Material	Max Head Diameter mm	Max Head Height mm	Hex Key (D) mm	Pitch mm
		<i>inches</i>		<i>inches</i>	<i>inches</i>	<i>inches</i>	<i>inches</i>
# SC048F-022-B-SK-C	10-32 UNF (4.762mm)	22.2 <i>0.874</i>	Alloy Steel	9.2 <i>0.362</i>	2.6 <i>0.102</i>	3.18 (1/8)	0.794 <i>0.031</i>
SC048F-025-B-SK-C	10-32 UNF (4.762mm)	25.4 <i>1.000</i>	Alloy Steel	9.2 <i>0.362</i>	2.6 <i>0.102</i>	3.18 (1/8)	0.794 <i>0.031</i>
# SC048F-032-B-SK-C	10-32 UNF (4.762mm)	31.8 <i>1.252</i>	Alloy Steel	9.2 <i>0.362</i>	2.6 <i>0.102</i>	3.18 (1/8)	0.794 <i>0.031</i>
# SC048F-038-B-SK-C	10-32 UNF (4.762mm)	38.1 <i>1.500</i>	Alloy Steel	9.2 <i>0.362</i>	2.6 <i>0.102</i>	3.18 (1/8)	0.794 <i>0.031</i>
# SC048F-045-B-SK-C	10-32 UNF (4.762mm)	44.5 <i>1.752</i>	Alloy Steel	9.2 <i>0.362</i>	2.6 <i>0.102</i>	3.18 (1/8)	0.794 <i>0.031</i>
# SC048F-051-B-SK-C	10-32 UNF (4.762mm)	50.8 <i>2.000</i>	Alloy Steel	9.2 <i>0.362</i>	2.6 <i>0.102</i>	3.18 (1/8)	0.794 <i>0.031</i>
# SC048F-057-B-SK-C	10-32 UNF (4.762mm)	57.2 <i>2.252</i>	Alloy Steel	9.2 <i>0.362</i>	2.6 <i>0.102</i>	3.18 (1/8)	0.794 <i>0.031</i>
# SC048F-064-B-SK-C	10-32 UNF (4.762mm)	63.5 <i>2.500</i>	Alloy Steel	9.2 <i>0.362</i>	2.6 <i>0.102</i>	3.18 (1/8)	0.794 <i>0.031</i>
SC050M-006-B-SK-C	M5x0.8 (5mm Standard)	6 <i>0.236</i>	Alloy Steel	9.5 <i>0.374</i>	2.8 <i>0.110</i>	3.00 <i>0.118</i>	0.800 <i>0.031</i>
SC050M-008-B-SK-C	M5x0.8 (5mm Standard)	8 <i>0.315</i>	Alloy Steel	9.5 <i>0.374</i>	2.8 <i>0.110</i>	3.00 <i>0.118</i>	0.800 <i>0.031</i>

Indicates item not stocked at time of printing - Please enquire for lead time

Page 19 of 43

E&OE Pricing and all details subject to change without notice - Copyright Miniature Bearings Australia Pty Ltd
MBA Size Listings are a guide to sizes only and must not be solely relied on for critical design information.

Screws - Button - Socket - Alloy Steel

Part Number	Thread Size (C)	Length (L) mm	Material	Max Head Diameter mm	Max Head Height mm	Hex Key (D) mm	Pitch mm
		<i>inches</i>		<i>inches</i>	<i>inches</i>	<i>inches</i>	<i>inches</i>
SC050M-010-B-SK-C	M5x0.8 (5mm Standard)	10 <i>0.394</i>	Alloy Steel	9.5 <i>0.374</i>	2.8 <i>0.110</i>	3.00 <i>0.118</i>	0.800 <i>0.031</i>
SC050M-012-B-SK-C	M5x0.8 (5mm Standard)	12 <i>0.472</i>	Alloy Steel	9.5 <i>0.374</i>	2.8 <i>0.110</i>	3.00 <i>0.118</i>	0.800 <i>0.031</i>
SC050M-016-B-SK-C	M5x0.8 (5mm Standard)	16 <i>0.630</i>	Alloy Steel	9.5 <i>0.374</i>	2.8 <i>0.110</i>	3.00 <i>0.118</i>	0.800 <i>0.031</i>
SC050M-020-B-SK-C	M5x0.8 (5mm Standard)	20 <i>0.787</i>	Alloy Steel	9.5 <i>0.374</i>	2.8 <i>0.110</i>	3.00 <i>0.118</i>	0.800 <i>0.031</i>
SC050M-025-B-SK-C	M5x0.8 (5mm Standard)	25 <i>0.984</i>	Alloy Steel	9.5 <i>0.374</i>	2.8 <i>0.110</i>	3.00 <i>0.118</i>	0.800 <i>0.031</i>
SC050M-030-B-SK-C	M5x0.8 (5mm Standard)	30 <i>1.181</i>	Alloy Steel	9.5 <i>0.374</i>	2.8 <i>0.110</i>	3.00 <i>0.118</i>	0.800 <i>0.031</i>
SC050M-035-B-SK-C	M5x0.8 (5mm Standard)	35 <i>1.378</i>	Alloy Steel	9.5 <i>0.374</i>	2.8 <i>0.110</i>	3.00 <i>0.118</i>	0.800 <i>0.031</i>
# SC050M-040-B-SK-C	M5x0.8 (5mm Standard)	40 <i>1.575</i>	Alloy Steel	9.5 <i>0.374</i>	2.8 <i>0.110</i>	3.00 <i>0.118</i>	0.800 <i>0.031</i>

Indicates item not stocked at time of printing - Please enquire for lead time

Page 20 of 43

E&OE Pricing and all details subject to change without notice - Copyright Miniature Bearings Australia Pty Ltd
MBA Size Listings are a guide to sizes only and must not be solely relied on for critical design information.

Screws - Button - Socket - Alloy Steel

Part Number	Thread Size (C)	Length (L) mm	Material	Max Head Diameter mm	Max Head Height mm	Hex Key (D) mm	Pitch mm
		<i>inches</i>		<i>inches</i>	<i>inches</i>	<i>inches</i>	<i>inches</i>
# SC050M-045-B-SK-C	M5x0.8 (5mm Standard)	45 <i>1.772</i>	Alloy Steel	9.5 <i>0.374</i>	2.8 <i>0.110</i>	3.00 <i>0.118</i>	0.800 <i>0.031</i>
SC050M-050-B-SK-C	M5x0.8 (5mm Standard)	50 <i>1.969</i>	Alloy Steel	9.5 <i>0.374</i>	2.8 <i>0.110</i>	3.00 <i>0.118</i>	0.800 <i>0.031</i>
# SC050M-060-B-SK-C	M5x0.8 (5mm Standard)	60 <i>2.362</i>	Alloy Steel	9.5 <i>0.374</i>	2.8 <i>0.110</i>	3.00 <i>0.118</i>	0.800 <i>0.031</i>
SC060M-006-B-SK-C	M6x1 (6mm Standard)	6 <i>0.236</i>	Alloy Steel	10.5 <i>0.413</i>	3.3 <i>0.130</i>	4.00 <i>0.157</i>	1.000 <i>0.039</i>
SC060M-008-B-SK-C	M6x1 (6mm Standard)	8 <i>0.315</i>	Alloy Steel	10.5 <i>0.413</i>	3.3 <i>0.130</i>	4.00 <i>0.157</i>	1.000 <i>0.039</i>
SC060M-010-B-SK-C	M6x1 (6mm Standard)	10 <i>0.394</i>	Alloy Steel	10.5 <i>0.413</i>	3.3 <i>0.130</i>	4.00 <i>0.157</i>	1.000 <i>0.039</i>
SC060M-012-B-SK-C	M6x1 (6mm Standard)	12 <i>0.472</i>	Alloy Steel	10.5 <i>0.413</i>	3.3 <i>0.130</i>	4.00 <i>0.157</i>	1.000 <i>0.039</i>
# SC060M-014-B-SK-C	M6x1 (6mm Standard)	14 <i>0.551</i>	Alloy Steel	10.5 <i>0.413</i>	3.3 <i>0.130</i>	4.00 <i>0.157</i>	1.000 <i>0.039</i>
SC060M-016-B-SK-C	M6x1 (6mm Standard)	16 <i>0.630</i>	Alloy Steel	10.5 <i>0.413</i>	3.3 <i>0.130</i>	4.00 <i>0.157</i>	1.000 <i>0.039</i>

Indicates item not stocked at time of printing - Please enquire for lead time

Page 21 of 43

E&OE Pricing and all details subject to change without notice - Copyright Miniature Bearings Australia Pty Ltd

MBA Size Listings are a guide to sizes only and must not be solely relied on for critical design information.

Screws - Button - Socket - Alloy Steel

Part Number	Thread Size (C)	Length (L) mm	Material	Max Head Diameter mm	Max Head Height mm	Hex Key (D) mm	Pitch mm
		<i>inches</i>		<i>inches</i>	<i>inches</i>	<i>inches</i>	<i>inches</i>
# SC060M-018-B-SK-C	M6x1 (6mm Standard)	18 <i>0.709</i>	Alloy Steel	10.5 <i>0.413</i>	3.3 <i>0.130</i>	4.00 <i>0.157</i>	1.000 <i>0.039</i>
SC060M-020-B-SK-C	M6x1 (6mm Standard)	20 <i>0.787</i>	Alloy Steel	10.5 <i>0.413</i>	3.3 <i>0.130</i>	4.00 <i>0.157</i>	1.000 <i>0.039</i>
SC060M-025-B-SK-C	M6x1 (6mm Standard)	25 <i>0.984</i>	Alloy Steel	10.5 <i>0.413</i>	3.3 <i>0.130</i>	4.00 <i>0.157</i>	1.000 <i>0.039</i>
SC060M-030-B-SK-C	M6x1 (6mm Standard)	30 <i>1.181</i>	Alloy Steel	10.5 <i>0.413</i>	3.3 <i>0.130</i>	4.00 <i>0.157</i>	1.000 <i>0.039</i>
# SC060M-035-B-SK-C	M6x1 (6mm Standard)	35 <i>1.378</i>	Alloy Steel	10.5 <i>0.413</i>	3.3 <i>0.130</i>	4.00 <i>0.157</i>	1.000 <i>0.039</i>
SC060M-040-B-SK-C	M6x1 (6mm Standard)	40 <i>1.575</i>	Alloy Steel	10.5 <i>0.413</i>	3.3 <i>0.130</i>	4.00 <i>0.157</i>	1.000 <i>0.039</i>
# SC060M-045-B-SK-C	M6x1 (6mm Standard)	45 <i>1.772</i>	Alloy Steel	10.5 <i>0.413</i>	3.3 <i>0.130</i>	4.00 <i>0.157</i>	1.000 <i>0.039</i>
SC060M-050-B-SK-C	M6x1 (6mm Standard)	50 <i>1.969</i>	Alloy Steel	10.5 <i>0.413</i>	3.3 <i>0.130</i>	4.00 <i>0.157</i>	1.000 <i>0.039</i>
# SC060M-055-B-SK-C	M6x1 (6mm Standard)	55 <i>2.165</i>	Alloy Steel	10.5 <i>0.413</i>	3.3 <i>0.130</i>	4.00 <i>0.157</i>	1.000 <i>0.039</i>
# SC060M-060-B-SK-C	M6x1 (6mm Standard)	60 <i>2.362</i>	Alloy Steel	10.5 <i>0.413</i>	3.3 <i>0.130</i>	4.00 <i>0.157</i>	1.000 <i>0.039</i>

Indicates item not stocked at time of printing - Please enquire for lead time

Page 22 of 43

E&OE Pricing and all details subject to change without notice - Copyright Miniature Bearings Australia Pty Ltd

MBA Size Listings are a guide to sizes only and must not be solely relied on for critical design information.

Screws - Button - Socket - Alloy Steel

Part Number	Thread Size (C)	Length (L) mm	Material	Max Head Diameter mm	Max Head Height mm	Hex Key (D) mm	Pitch mm
		<i>inches</i>		<i>inches</i>	<i>inches</i>	<i>inches</i>	<i>inches</i>
# SC060M-065-B-SK-C	M6x1 (6mm Standard)	65 <i>2.559</i>	Alloy Steel	10.5 <i>0.413</i>	3.3 <i>0.130</i>	4.00 <i>0.157</i>	1.000 <i>0.039</i>
# SC060M-070-B-SK-C	M6x1 (6mm Standard)	70 <i>2.756</i>	Alloy Steel	10.5 <i>0.413</i>	3.3 <i>0.130</i>	4.00 <i>0.157</i>	1.000 <i>0.039</i>
# SC060M-075-B-SK-C	M6x1 (6mm Standard)	75 <i>2.953</i>	Alloy Steel	10.5 <i>0.413</i>	3.3 <i>0.130</i>	4.00 <i>0.157</i>	1.000 <i>0.039</i>
# SC060M-080-B-SK-C	M6x1 (6mm Standard)	80 <i>3.150</i>	Alloy Steel	10.5 <i>0.413</i>	3.3 <i>0.130</i>	4.00 <i>0.157</i>	1.000 <i>0.039</i>
# SC064C-006-B-SK-C	1/4-20 UNC (6.35mm)	6.4 <i>0.252</i>	Alloy Steel	11.1 <i>0.437</i>	3.4 <i>0.134</i>	3.97 (5/32)	1.270 <i>0.050</i>
# SC064C-007-B-SK-C	1/4-20 UNC (6.35mm)	7.9 <i>0.311</i>	Alloy Steel	11.1 <i>0.437</i>	3.4 <i>0.134</i>	3.97 (5/32)	1.270 <i>0.050</i>
SC064C-010-B-SK-C	1/4-20 UNC (6.35mm)	9.5 <i>0.374</i>	Alloy Steel	11.1 <i>0.437</i>	3.4 <i>0.134</i>	3.97 (5/32)	1.270 <i>0.050</i>
SC064C-013-B-SK-C	1/4-20 UNC (6.35mm)	12.7 <i>0.500</i>	Alloy Steel	11.1 <i>0.437</i>	3.4 <i>0.134</i>	3.97 (5/32)	1.270 <i>0.050</i>
SC064C-016-B-SK-C	1/4-20 UNC (6.35mm)	15.9 <i>0.626</i>	Alloy Steel	11.1 <i>0.437</i>	3.4 <i>0.134</i>	3.97 (5/32)	1.270 <i>0.050</i>
SC064C-019-B-SK-C	1/4-20 UNC (6.35mm)	19.1 <i>0.752</i>	Alloy Steel	11.1 <i>0.437</i>	3.4 <i>0.134</i>	3.97 (5/32)	1.270 <i>0.050</i>

Indicates item not stocked at time of printing - Please enquire for lead time

Page 23 of 43

E&OE Pricing and all details subject to change without notice - Copyright Miniature Bearings Australia Pty Ltd
MBA Size Listings are a guide to sizes only and must not be solely relied on for critical design information.

Screws - Button - Socket - Alloy Steel

Part Number	Thread Size (C)	Length (L) mm	Material	Max Head Diameter mm	Max Head Height mm	Hex Key (D) mm	Pitch mm
		<i>inches</i>		<i>inches</i>	<i>inches</i>	<i>inches</i>	<i>inches</i>
# SC064C-022-B-SK-C	1/4-20 UNC (6.35mm)	22.2 <i>0.874</i>	Alloy Steel	11.1 <i>0.437</i>	3.4 <i>0.134</i>	3.97 (5/32)	1.270 <i>0.050</i>
# SC064C-025-B-SK-C	1/4-20 UNC (6.35mm)	25.4 <i>1.000</i>	Alloy Steel	11.1 <i>0.437</i>	3.4 <i>0.134</i>	3.97 (5/32)	1.270 <i>0.050</i>
SC064C-032-B-SK-C	1/4-20 UNC (6.35mm)	31.8 <i>1.252</i>	Alloy Steel	11.1 <i>0.437</i>	3.4 <i>0.134</i>	3.97 (5/32)	1.270 <i>0.050</i>
# SC064C-038-B-SK-C	1/4-20 UNC (6.35mm)	38.1 <i>1.500</i>	Alloy Steel	11.1 <i>0.437</i>	3.4 <i>0.134</i>	3.97 (5/32)	1.270 <i>0.050</i>
# SC064C-045-B-SK-C	1/4-20 UNC (6.35mm)	44.5 <i>1.752</i>	Alloy Steel	11.1 <i>0.437</i>	3.4 <i>0.134</i>	3.97 (5/32)	1.270 <i>0.050</i>
# SC064C-051-B-SK-C	1/4-20 UNC (6.35mm)	50.8 <i>2.000</i>	Alloy Steel	11.1 <i>0.437</i>	3.4 <i>0.134</i>	3.97 (5/32)	1.270 <i>0.050</i>
# SC064C-064-B-SK-C	1/4-20 UNC (6.35mm)	63.5 <i>2.500</i>	Alloy Steel	11.1 <i>0.437</i>	3.4 <i>0.134</i>	3.97 (5/32)	1.270 <i>0.050</i>
# SC064C-076-B-SK-C	1/4-20 UNC (6.35mm)	76.2 <i>3.000</i>	Alloy Steel	11.1 <i>0.437</i>	3.4 <i>0.134</i>	3.97 (5/32)	1.270 <i>0.050</i>
# SC064C-089-B-SK-C	1/4-20 UNC (6.35mm)	88.9 <i>3.500</i>	Alloy Steel	11.1 <i>0.437</i>	3.4 <i>0.134</i>	3.97 (5/32)	1.270 <i>0.050</i>
# SC064C-102-B-SK-C	1/4-20 UNC (6.35mm)	101.6 <i>4.000</i>	Alloy Steel	11.1 <i>0.437</i>	3.4 <i>0.134</i>	3.97 (5/32)	1.270 <i>0.050</i>

Indicates item not stocked at time of printing - Please enquire for lead time

Page 24 of 43

E&OE Pricing and all details subject to change without notice - Copyright Miniature Bearings Australia Pty Ltd
MBA Size Listings are a guide to sizes only and must not be solely relied on for critical design information.

Screws - Button - Socket - Alloy Steel

Part Number	Thread Size (C)	Length (L) mm	Material	Max Head Diameter mm	Max Head Height mm	Hex Key (D) mm	Pitch mm
		<i>inches</i>		<i>inches</i>	<i>inches</i>	<i>inches</i>	<i>inches</i>
# SC064W-010-B-SK-C	1/4-20 BSW (6.35mm)	9.5 <i>0.374</i>	Alloy Steel	11.1 <i>0.437</i>	3.4 <i>0.134</i>	3.97 (5/32)	1.270 <i>0.050</i>
# SC064W-013-B-SK-C	1/4-20 BSW (6.35mm)	12.7 <i>0.500</i>	Alloy Steel	11.1 <i>0.437</i>	3.4 <i>0.134</i>	3.97 (5/32)	1.270 <i>0.050</i>
# SC064W-016-B-SK-C	1/4-20 BSW (6.35mm)	15.9 <i>0.626</i>	Alloy Steel	11.1 <i>0.437</i>	3.4 <i>0.134</i>	3.97 (5/32)	1.270 <i>0.050</i>
# SC064W-019-B-SK-C	1/4-20 BSW (6.35mm)	19.1 <i>0.752</i>	Alloy Steel	11.1 <i>0.437</i>	3.4 <i>0.134</i>	3.97 (5/32)	1.270 <i>0.050</i>
# SC064W-025-B-SK-C	1/4-20 BSW (6.35mm)	25.4 <i>1.000</i>	Alloy Steel	11.1 <i>0.437</i>	3.4 <i>0.134</i>	3.97 (5/32)	1.270 <i>0.050</i>
# SC064W-032-B-SK-C	1/4-20 BSW (6.35mm)	31.8 <i>1.252</i>	Alloy Steel	11.1 <i>0.437</i>	3.4 <i>0.134</i>	3.97 (5/32)	1.270 <i>0.050</i>
# SC064F-006-B-SK-C	1/4-28 UNF (6.35mm)	6.4 <i>0.252</i>	Alloy Steel	11.1 <i>0.437</i>	3.4 <i>0.134</i>	3.97 (5/32)	0.907 <i>0.036</i>
# SC064F-007-B-SK-C	1/4-28 UNF (6.35mm)	7.9 <i>0.311</i>	Alloy Steel	11.1 <i>0.437</i>	3.4 <i>0.134</i>	3.97 (5/32)	0.907 <i>0.036</i>
SC064F-010-B-SK-C	1/4-28 UNF (6.35mm)	9.5 <i>0.374</i>	Alloy Steel	11.1 <i>0.437</i>	3.4 <i>0.134</i>	3.97 (5/32)	0.907 <i>0.036</i>
# SC064F-013-B-SK-C	1/4-28 UNF (6.35mm)	12.7 <i>0.500</i>	Alloy Steel	11.1 <i>0.437</i>	3.4 <i>0.134</i>	3.97 (5/32)	0.907 <i>0.036</i>

Indicates item not stocked at time of printing - Please enquire for lead time

Page 25 of 43

E&OE Pricing and all details subject to change without notice - Copyright Miniature Bearings Australia Pty Ltd
MBA Size Listings are a guide to sizes only and must not be solely relied on for critical design information.

Screws - Button - Socket - Alloy Steel

Part Number	Thread Size (C)	Length (L) mm	Material	Max Head Diameter mm	Max Head Height mm	Hex Key (D) mm	Pitch mm
		<i>inches</i>		<i>inches</i>	<i>inches</i>	<i>inches</i>	<i>inches</i>
# SC064F-016-B-SK-C	1/4-28 UNF (6.35mm)	15.9 <i>0.626</i>	Alloy Steel	11.1 <i>0.437</i>	3.4 <i>0.134</i>	3.97 (5/32)	0.907 <i>0.036</i>
# SC064F-019-B-SK-C	1/4-28 UNF (6.35mm)	19.1 <i>0.752</i>	Alloy Steel	11.1 <i>0.437</i>	3.4 <i>0.134</i>	3.97 (5/32)	0.907 <i>0.036</i>
# SC064F-022-B-SK-C	1/4-28 UNF (6.35mm)	22.2 <i>0.874</i>	Alloy Steel	11.1 <i>0.437</i>	3.4 <i>0.134</i>	3.97 (5/32)	0.907 <i>0.036</i>
# SC064F-025-B-SK-C	1/4-28 UNF (6.35mm)	25.4 <i>1.000</i>	Alloy Steel	11.1 <i>0.437</i>	3.4 <i>0.134</i>	3.97 (5/32)	0.907 <i>0.036</i>
SC064F-032-B-SK-C	1/4-28 UNF (6.35mm)	31.8 <i>1.252</i>	Alloy Steel	11.1 <i>0.437</i>	3.4 <i>0.134</i>	3.97 (5/32)	0.907 <i>0.036</i>
# SC064F-038-B-SK-C	1/4-28 UNF (6.35mm)	38.1 <i>1.500</i>	Alloy Steel	11.1 <i>0.437</i>	3.4 <i>0.134</i>	3.97 (5/32)	0.907 <i>0.036</i>
# SC064F-045-B-SK-C	1/4-28 UNF (6.35mm)	44.5 <i>1.752</i>	Alloy Steel	11.1 <i>0.437</i>	3.4 <i>0.134</i>	3.97 (5/32)	0.907 <i>0.036</i>
# SC064F-051-B-SK-C	1/4-28 UNF (6.35mm)	50.8 <i>2.000</i>	Alloy Steel	11.1 <i>0.437</i>	3.4 <i>0.134</i>	3.97 (5/32)	0.907 <i>0.036</i>
# SC064F-064-B-SK-C	1/4-28 UNF (6.35mm)	63.5 <i>2.500</i>	Alloy Steel	11.1 <i>0.437</i>	3.4 <i>0.134</i>	3.97 (5/32)	0.907 <i>0.036</i>
# SC064F-076-B-SK-C	1/4-28 UNF (6.35mm)	76.2 <i>3.000</i>	Alloy Steel	11.1 <i>0.437</i>	3.4 <i>0.134</i>	3.97 (5/32)	0.907 <i>0.036</i>

Indicates item not stocked at time of printing - Please enquire for lead time

Page 26 of 43

E&OE Pricing and all details subject to change without notice - Copyright Miniature Bearings Australia Pty Ltd
MBA Size Listings are a guide to sizes only and must not be solely relied on for critical design information.

Screws - Button - Socket - Alloy Steel

Part Number	Thread Size (C)	Length (L) mm	Material	Max Head Diameter mm	Max Head Height mm	Hex Key (D) mm	Pitch mm
		<i>inches</i>		<i>inches</i>	<i>inches</i>	<i>inches</i>	<i>inches</i>
# SC079C-010-B-SK-C	5/16-18 UNC (7.938mm)	9.5 <i>0.374</i>	Alloy Steel	13.9 <i>0.547</i>	4.2 <i>0.165</i>	4.76 (3/16)	1.411 <i>0.056</i>
# SC079C-013-B-SK-C	5/16-18 UNC (7.938mm)	12.7 <i>0.500</i>	Alloy Steel	13.9 <i>0.547</i>	4.2 <i>0.165</i>	4.76 (3/16)	1.411 <i>0.056</i>
# SC079C-016-B-SK-C	5/16-18 UNC (7.938mm)	15.9 <i>0.626</i>	Alloy Steel	13.9 <i>0.547</i>	4.2 <i>0.165</i>	4.76 (3/16)	1.411 <i>0.056</i>
# SC079C-019-B-SK-C	5/16-18 UNC (7.938mm)	19.1 <i>0.752</i>	Alloy Steel	13.9 <i>0.547</i>	4.2 <i>0.165</i>	4.76 (3/16)	1.411 <i>0.056</i>
# SC079C-022-B-SK-C	5/16-18 UNC (7.938mm)	22.2 <i>0.874</i>	Alloy Steel	13.9 <i>0.547</i>	4.2 <i>0.165</i>	4.76 (3/16)	1.411 <i>0.056</i>
# SC079C-025-B-SK-C	5/16-18 UNC (7.938mm)	25.4 <i>1.000</i>	Alloy Steel	13.9 <i>0.547</i>	4.2 <i>0.165</i>	4.76 (3/16)	1.411 <i>0.056</i>
# SC079C-032-B-SK-C	5/16-18 UNC (7.938mm)	31.8 <i>1.252</i>	Alloy Steel	13.9 <i>0.547</i>	4.2 <i>0.165</i>	4.76 (3/16)	1.411 <i>0.056</i>
# SC079C-038-B-SK-C	5/16-18 UNC (7.938mm)	38.1 <i>1.500</i>	Alloy Steel	13.9 <i>0.547</i>	4.2 <i>0.165</i>	4.76 (3/16)	1.411 <i>0.056</i>

Indicates item not stocked at time of printing - Please enquire for lead time

Page 27 of 43

E&OE Pricing and all details subject to change without notice - Copyright Miniature Bearings Australia Pty Ltd
MBA Size Listings are a guide to sizes only and must not be solely relied on for critical design information.

Screws - Button - Socket - Alloy Steel

Part Number	Thread Size (C)	Length (L) mm	Material	Max Head Diameter mm	Max Head Height mm	Hex Key (D) mm	Pitch mm
		<i>inches</i>		<i>inches</i>	<i>inches</i>	<i>inches</i>	<i>inches</i>
# SC079C-045-B-SK-C	5/16-18 UNC (7.938mm)	44.5 <i>1.752</i>	Alloy Steel	13.9 <i>0.547</i>	4.2 <i>0.165</i>	4.76 (3/16)	1.411 <i>0.056</i>
# SC079C-051-B-SK-C	5/16-18 UNC (7.938mm)	50.8 <i>2.000</i>	Alloy Steel	13.9 <i>0.547</i>	4.2 <i>0.165</i>	4.76 (3/16)	1.411 <i>0.056</i>
# SC079C-057-B-SK-C	5/16-18 UNC (7.938mm)	57.2 <i>2.252</i>	Alloy Steel	13.9 <i>0.547</i>	4.2 <i>0.165</i>	4.76 (3/16)	1.411 <i>0.056</i>
# SC079C-064-B-SK-C	5/16-18 UNC (7.938mm)	63.5 <i>2.500</i>	Alloy Steel	13.9 <i>0.547</i>	4.2 <i>0.165</i>	4.76 (3/16)	1.411 <i>0.056</i>
# SC079C-076-B-SK-C	5/16-18 UNC (7.938mm)	76.2 <i>3.000</i>	Alloy Steel	13.9 <i>0.547</i>	4.2 <i>0.165</i>	4.76 (3/16)	1.411 <i>0.056</i>
# SC079C-089-B-SK-C	5/16-18 UNC (7.938mm)	88.9 <i>3.500</i>	Alloy Steel	13.9 <i>0.547</i>	4.2 <i>0.165</i>	4.76 (3/16)	1.411 <i>0.056</i>
# SC079C-102-B-SK-C	5/16-18 UNC (7.938mm)	101.6 <i>4.000</i>	Alloy Steel	13.9 <i>0.547</i>	4.2 <i>0.165</i>	4.76 (3/16)	1.411 <i>0.056</i>
# SC079W-013-B-SK-C	5/16-18 BSW (7.938mm)	12.7 <i>0.500</i>	Alloy Steel	13.9 <i>0.547</i>	4.2 <i>0.165</i>	4.76 (3/16)	1.411 <i>0.056</i>

Indicates item not stocked at time of printing - Please enquire for lead time

Page 28 of 43

E&OE Pricing and all details subject to change without notice - Copyright Miniature Bearings Australia Pty Ltd
MBA Size Listings are a guide to sizes only and must not be solely relied on for critical design information.

Screws - Button - Socket - Alloy Steel

Part Number	Thread Size (C)	Length (L) mm	Material	Max Head Diameter mm	Max Head Height mm	Hex Key (D) mm	Pitch mm
		<i>inches</i>		<i>inches</i>	<i>inches</i>	<i>inches</i>	<i>inches</i>
# SC079W-016-B-SK-C	5/16-18 BSW (7.938mm)	15.9 <i>0.626</i>	Alloy Steel	13.9 <i>0.547</i>	4.2 <i>0.165</i>	4.76 (3/16)	1.411 <i>0.056</i>
# SC079W-019-B-SK-C	5/16-18 BSW (7.938mm)	19.1 <i>0.752</i>	Alloy Steel	13.9 <i>0.547</i>	4.2 <i>0.165</i>	4.76 (3/16)	1.411 <i>0.056</i>
# SC079W-025-B-SK-C	5/16-18 BSW (7.938mm)	25.4 <i>1.000</i>	Alloy Steel	13.9 <i>0.547</i>	4.2 <i>0.165</i>	4.76 (3/16)	1.411 <i>0.056</i>
# SC079W-032-B-SK-C	5/16-18 BSW (7.938mm)	31.8 <i>1.252</i>	Alloy Steel	13.9 <i>0.547</i>	4.2 <i>0.165</i>	4.76 (3/16)	1.411 <i>0.056</i>
# SC079F-010-B-SK-C	5/16-24 UNF (7.938mm)	9.5 <i>0.374</i>	Alloy Steel	13.9 <i>0.547</i>	4.2 <i>0.165</i>	4.76 (3/16)	1.058 <i>0.042</i>
# SC079F-013-B-SK-C	5/16-24 UNF (7.938mm)	12.7 <i>0.500</i>	Alloy Steel	13.9 <i>0.547</i>	4.2 <i>0.165</i>	4.76 (3/16)	1.058 <i>0.042</i>
# SC079F-016-B-SK-C	5/16-24 UNF (7.938mm)	15.9 <i>0.626</i>	Alloy Steel	13.9 <i>0.547</i>	4.2 <i>0.165</i>	4.76 (3/16)	1.058 <i>0.042</i>
# SC079F-019-B-SK-C	5/16-24 UNF (7.938mm)	19.1 <i>0.752</i>	Alloy Steel	13.9 <i>0.547</i>	4.2 <i>0.165</i>	4.76 (3/16)	1.058 <i>0.042</i>

Indicates item not stocked at time of printing - Please enquire for lead time

Page 29 of 43

E&OE Pricing and all details subject to change without notice - Copyright Miniature Bearings Australia Pty Ltd
MBA Size Listings are a guide to sizes only and must not be solely relied on for critical design information.

Screws - Button - Socket - Alloy Steel

Part Number	Thread Size (C)	Length (L) mm	Material	Max Head Diameter mm	Max Head Height mm	Hex Key (D) mm	Pitch mm
		<i>inches</i>		<i>inches</i>	<i>inches</i>	<i>inches</i>	<i>inches</i>
# SC079F-022-B-SK-C	5/16-24 UNF (7.938mm)	22.2 <i>0.874</i>	Alloy Steel	13.9 <i>0.547</i>	4.2 <i>0.165</i>	4.76 (3/16)	1.058 <i>0.042</i>
# SC079F-025-B-SK-C	5/16-24 UNF (7.938mm)	25.4 <i>1.000</i>	Alloy Steel	13.9 <i>0.547</i>	4.2 <i>0.165</i>	4.76 (3/16)	1.058 <i>0.042</i>
# SC079F-032-B-SK-C	5/16-24 UNF (7.938mm)	31.8 <i>1.252</i>	Alloy Steel	13.9 <i>0.547</i>	4.2 <i>0.165</i>	4.76 (3/16)	1.058 <i>0.042</i>
# SC079F-038-B-SK-C	5/16-24 UNF (7.938mm)	38.1 <i>1.500</i>	Alloy Steel	13.9 <i>0.547</i>	4.2 <i>0.165</i>	4.76 (3/16)	1.058 <i>0.042</i>
# SC079F-045-B-SK-C	5/16-24 UNF (7.938mm)	44.5 <i>1.752</i>	Alloy Steel	13.9 <i>0.547</i>	4.2 <i>0.165</i>	4.76 (3/16)	1.058 <i>0.042</i>
# SC079F-051-B-SK-C	5/16-24 UNF (7.938mm)	50.8 <i>2.000</i>	Alloy Steel	13.9 <i>0.547</i>	4.2 <i>0.165</i>	4.76 (3/16)	1.058 <i>0.042</i>
# SC080M-008-B-SK-C	M8x1.25 (8mm Standard)	8 <i>0.315</i>	Alloy Steel	14.0 <i>0.551</i>	4.4 <i>0.173</i>	5.00 <i>0.197</i>	1.250 <i>0.049</i>
SC080M-010-B-SK-C	M8x1.25 (8mm Standard)	10 <i>0.394</i>	Alloy Steel	14.0 <i>0.551</i>	4.4 <i>0.173</i>	5.00 <i>0.197</i>	1.250 <i>0.049</i>

Indicates item not stocked at time of printing - Please enquire for lead time

Page 30 of 43

E&OE Pricing and all details subject to change without notice - Copyright Miniature Bearings Australia Pty Ltd
MBA Size Listings are a guide to sizes only and must not be solely relied on for critical design information.

Screws - Button - Socket - Alloy Steel

Part Number	Thread Size (C)	Length (L) mm	Material	Max Head Diameter mm	Max Head Height mm	Hex Key (D) mm	Pitch mm
		<i>inches</i>		<i>inches</i>	<i>inches</i>	<i>inches</i>	<i>inches</i>
SC080M-012-B-SK-C	M8x1.25 (8mm Standard)	12 <i>0.472</i>	Alloy Steel	14.0 <i>0.551</i>	4.4 <i>0.173</i>	5.00 <i>0.197</i>	1.250 <i>0.049</i>
SC080M-016-B-SK-C	M8x1.25 (8mm Standard)	16 <i>0.630</i>	Alloy Steel	14.0 <i>0.551</i>	4.4 <i>0.173</i>	5.00 <i>0.197</i>	1.250 <i>0.049</i>
SC080M-020-B-SK-C	M8x1.25 (8mm Standard)	20 <i>0.787</i>	Alloy Steel	14.0 <i>0.551</i>	4.4 <i>0.173</i>	5.00 <i>0.197</i>	1.250 <i>0.049</i>
SC080M-025-B-SK-C	M8x1.25 (8mm Standard)	25 <i>0.984</i>	Alloy Steel	14.0 <i>0.551</i>	4.4 <i>0.173</i>	5.00 <i>0.197</i>	1.250 <i>0.049</i>
SC080M-030-B-SK-C	M8x1.25 (8mm Standard)	30 <i>1.181</i>	Alloy Steel	14.0 <i>0.551</i>	4.4 <i>0.173</i>	5.00 <i>0.197</i>	1.250 <i>0.049</i>
SC080M-035-B-SK-C	M8x1.25 (8mm Standard)	35 <i>1.378</i>	Alloy Steel	14.0 <i>0.551</i>	4.4 <i>0.173</i>	5.00 <i>0.197</i>	1.250 <i>0.049</i>
SC080M-040-B-SK-C	M8x1.25 (8mm Standard)	40 <i>1.575</i>	Alloy Steel	14.0 <i>0.551</i>	4.4 <i>0.173</i>	5.00 <i>0.197</i>	1.250 <i>0.049</i>
# SC080M-045-B-SK-C	M8x1.25 (8mm Standard)	45 <i>1.772</i>	Alloy Steel	14.0 <i>0.551</i>	4.4 <i>0.173</i>	5.00 <i>0.197</i>	1.250 <i>0.049</i>

Indicates item not stocked at time of printing - Please enquire for lead time

Page 31 of 43

E&OE Pricing and all details subject to change without notice - Copyright Miniature Bearings Australia Pty Ltd
MBA Size Listings are a guide to sizes only and must not be solely relied on for critical design information.

Screws - Button - Socket - Alloy Steel

Part Number	Thread Size (C)	Length (L) mm	Material	Max Head Diameter mm	Max Head Height mm	Hex Key (D) mm	Pitch mm
		<i>inches</i>		<i>inches</i>	<i>inches</i>	<i>inches</i>	<i>inches</i>
# SC080M-050-B-SK-C	M8x1.25 (8mm Standard)	50 <i>1.969</i>	Alloy Steel	14.0 <i>0.551</i>	4.4 <i>0.173</i>	5.00 <i>0.197</i>	1.250 <i>0.049</i>
# SC080M-055-B-SK-C	M8x1.25 (8mm Standard)	55 <i>2.165</i>	Alloy Steel	14.0 <i>0.551</i>	4.4 <i>0.173</i>	5.00 <i>0.197</i>	1.250 <i>0.049</i>
# SC080M-060-B-SK-C	M8x1.25 (8mm Standard)	60 <i>2.362</i>	Alloy Steel	14.0 <i>0.551</i>	4.4 <i>0.173</i>	5.00 <i>0.197</i>	1.250 <i>0.049</i>
# SC080M-065-B-SK-C	M8x1.25 (8mm Standard)	65 <i>2.559</i>	Alloy Steel	14.0 <i>0.551</i>	4.4 <i>0.173</i>	5.00 <i>0.197</i>	1.250 <i>0.049</i>
# SC080M-070-B-SK-C	M8x1.25 (8mm Standard)	70 <i>2.756</i>	Alloy Steel	14.0 <i>0.551</i>	4.4 <i>0.173</i>	5.00 <i>0.197</i>	1.250 <i>0.049</i>
# SC080M-075-B-SK-C	M8x1.25 (8mm Standard)	75 <i>2.953</i>	Alloy Steel	14.0 <i>0.551</i>	4.4 <i>0.173</i>	5.00 <i>0.197</i>	1.250 <i>0.049</i>
# SC080M-080-B-SK-C	M8x1.25 (8mm Standard)	80 <i>3.150</i>	Alloy Steel	14.0 <i>0.551</i>	4.4 <i>0.173</i>	5.00 <i>0.197</i>	1.250 <i>0.049</i>
# SC080M-100-B-SK-C	M8x1.25 (8mm Standard)	100 <i>3.937</i>	Alloy Steel	14.0 <i>0.551</i>	4.4 <i>0.173</i>	5.00 <i>0.197</i>	1.250 <i>0.049</i>

Indicates item not stocked at time of printing - Please enquire for lead time

Page 32 of 43

E&OE Pricing and all details subject to change without notice - Copyright Miniature Bearings Australia Pty Ltd

MBA Size Listings are a guide to sizes only and must not be solely relied on for critical design information.

Screws - Button - Socket - Alloy Steel

Part Number	Thread Size (C)	Length (L) mm	Material	Max Head Diameter mm	Max Head Height mm	Hex Key (D) mm	Pitch mm
		<i>inches</i>		<i>inches</i>	<i>inches</i>	<i>inches</i>	<i>inches</i>
# SC095C-013-B-SK-C	3/8-16 UNC (9.525mm)	12.7 <i>0.500</i>	Alloy Steel	16.7 <i>0.657</i>	5.0 <i>0.197</i>	5.56 (7/32)	1.588 <i>0.063</i>
# SC095C-016-B-SK-C	3/8-16 UNC (9.525mm)	15.9 <i>0.626</i>	Alloy Steel	16.7 <i>0.657</i>	5.0 <i>0.197</i>	5.56 (7/32)	1.588 <i>0.063</i>
# SC095C-019-B-SK-C	3/8-16 UNC (9.525mm)	19.1 <i>0.752</i>	Alloy Steel	16.7 <i>0.657</i>	5.0 <i>0.197</i>	5.56 (7/32)	1.588 <i>0.063</i>
# SC095C-022-B-SK-C	3/8-16 UNC (9.525mm)	22.2 <i>0.874</i>	Alloy Steel	16.7 <i>0.657</i>	5.0 <i>0.197</i>	5.56 (7/32)	1.588 <i>0.063</i>
# SC095C-025-B-SK-C	3/8-16 UNC (9.525mm)	25.4 <i>1.000</i>	Alloy Steel	16.7 <i>0.657</i>	5.0 <i>0.197</i>	5.56 (7/32)	1.588 <i>0.063</i>
# SC095C-032-B-SK-C	3/8-16 UNC (9.525mm)	31.8 <i>1.252</i>	Alloy Steel	16.7 <i>0.657</i>	5.0 <i>0.197</i>	5.56 (7/32)	1.588 <i>0.063</i>
# SC095C-038-B-SK-C	3/8-16 UNC (9.525mm)	38.1 <i>1.500</i>	Alloy Steel	16.7 <i>0.657</i>	5.0 <i>0.197</i>	5.56 (7/32)	1.588 <i>0.063</i>
# SC095C-045-B-SK-C	3/8-16 UNC (9.525mm)	44.5 <i>1.752</i>	Alloy Steel	16.7 <i>0.657</i>	5.0 <i>0.197</i>	5.56 (7/32)	1.588 <i>0.063</i>

Indicates item not stocked at time of printing - Please enquire for lead time

Page 33 of 43

E&OE Pricing and all details subject to change without notice - Copyright Miniature Bearings Australia Pty Ltd
MBA Size Listings are a guide to sizes only and must not be solely relied on for critical design information.

Screws - Button - Socket - Alloy Steel

Part Number	Thread Size (C)	Length (L) mm	Material	Max Head Diameter mm	Max Head Height mm	Hex Key (D) mm	Pitch mm
		<i>inches</i>		<i>inches</i>	<i>inches</i>	<i>inches</i>	<i>inches</i>
# SC095C-051-B-SK-C	3/8-16 UNC (9.525mm)	50.8 <i>2.000</i>	Alloy Steel	16.7 <i>0.657</i>	5.0 <i>0.197</i>	5.56 (7/32)	1.588 <i>0.063</i>
# SC095C-057-B-SK-C	3/8-16 UNC (9.525mm)	57.2 <i>2.252</i>	Alloy Steel	16.7 <i>0.657</i>	5.0 <i>0.197</i>	5.56 (7/32)	1.588 <i>0.063</i>
# SC095C-064-B-SK-C	3/8-16 UNC (9.525mm)	63.5 <i>2.500</i>	Alloy Steel	16.7 <i>0.657</i>	5.0 <i>0.197</i>	5.56 (7/32)	1.588 <i>0.063</i>
# SC095C-070-B-SK-C	3/8-16 UNC (9.525mm)	69.9 <i>2.752</i>	Alloy Steel	16.7 <i>0.657</i>	5.0 <i>0.197</i>	5.56 (7/32)	1.588 <i>0.063</i>
# SC095C-076-B-SK-C	3/8-16 UNC (9.525mm)	76.2 <i>3.000</i>	Alloy Steel	16.7 <i>0.657</i>	5.0 <i>0.197</i>	5.56 (7/32)	1.588 <i>0.063</i>
# SC095W-019-B-SK-C	3/8-16 BSW (9.525mm)	19.1 <i>0.752</i>	Alloy Steel	16.7 <i>0.657</i>	5.0 <i>0.197</i>	5.56 (7/32)	1.588 <i>0.063</i>
# SC095W-025-B-SK-C	3/8-16 BSW (9.525mm)	25.4 <i>1.000</i>	Alloy Steel	16.7 <i>0.657</i>	5.0 <i>0.197</i>	5.56 (7/32)	1.588 <i>0.063</i>
# SC095W-032-B-SK-C	3/8-16 BSW (9.525mm)	31.8 <i>1.252</i>	Alloy Steel	16.7 <i>0.657</i>	5.0 <i>0.197</i>	5.56 (7/32)	1.588 <i>0.063</i>

Indicates item not stocked at time of printing - Please enquire for lead time

Page 34 of 43

E&OE Pricing and all details subject to change without notice - Copyright Miniature Bearings Australia Pty Ltd
MBA Size Listings are a guide to sizes only and must not be solely relied on for critical design information.

Screws - Button - Socket - Alloy Steel

Part Number	Thread Size (C)	Length (L) mm	Material	Max Head Diameter mm	Max Head Height mm	Hex Key (D) mm	Pitch mm
		<i>inches</i>		<i>inches</i>	<i>inches</i>	<i>inches</i>	<i>inches</i>
# SC095W-038-B-SK-C	3/8-16 BSW (9.525mm)	38.1 <i>1.500</i>	Alloy Steel	16.7 <i>0.657</i>	5.0 <i>0.197</i>	5.56 (7/32)	1.588 <i>0.063</i>
# SC095W-064-B-SK-C	3/8-16 BSW (9.525mm)	63.50 <i>2.500</i>	Alloy Steel	16.7 <i>0.657</i>	5.0 <i>0.197</i>	5.56 (7/32)	1.588 <i>0.063</i>
# SC095F-013-B-SK-C	3/8-24 UNF (9.525mm)	12.7 <i>0.500</i>	Alloy Steel	16.7 <i>0.657</i>	5.0 <i>0.197</i>	5.56 (7/32)	1.058 <i>0.042</i>
# SC095F-016-B-SK-C	3/8-24 UNF (9.525mm)	15.9 <i>0.626</i>	Alloy Steel	16.7 <i>0.657</i>	5.0 <i>0.197</i>	5.56 (7/32)	1.058 <i>0.042</i>
# SC095F-019-B-SK-C	3/8-24 UNF (9.525mm)	19.1 <i>0.752</i>	Alloy Steel	16.7 <i>0.657</i>	5.0 <i>0.197</i>	5.56 (7/32)	1.058 <i>0.042</i>
# SC095F-025-B-SK-C	3/8-24 UNF (9.525mm)	25.4 <i>1.000</i>	Alloy Steel	16.7 <i>0.657</i>	5.0 <i>0.197</i>	5.56 (7/32)	1.058 <i>0.042</i>
# SC095F-032-B-SK-C	3/8-24 UNF (9.525mm)	31.8 <i>1.252</i>	Alloy Steel	16.7 <i>0.657</i>	5.0 <i>0.197</i>	5.56 (7/32)	1.058 <i>0.042</i>
# SC095F-038-B-SK-C	3/8-24 UNF (9.525mm)	38.1 <i>1.500</i>	Alloy Steel	16.7 <i>0.657</i>	5.0 <i>0.197</i>	5.56 (7/32)	1.058 <i>0.042</i>

Indicates item not stocked at time of printing - Please enquire for lead time

Page 35 of 43

E&OE Pricing and all details subject to change without notice - Copyright Miniature Bearings Australia Pty Ltd

MBA Size Listings are a guide to sizes only and must not be solely relied on for critical design information.

Screws - Button - Socket - Alloy Steel

Part Number	Thread Size (C)	Length (L) mm	Material	Max Head Diameter mm	Max Head Height mm	Hex Key (D) mm	Pitch mm
		<i>inches</i>		<i>inches</i>	<i>inches</i>	<i>inches</i>	<i>inches</i>
# SC095F-051-B-SK-C	3/8-24 UNF (9.525mm)	50.80 <i>2.000</i>	Alloy Steel	16.7 <i>0.657</i>	5.0 <i>0.197</i>	5.56 (7/32)	1.058 <i>0.042</i>
# SC100M-012-B-SK-C	M10x1.5 (10mm Standard)	12 <i>0.472</i>	Alloy Steel	18.0 <i>0.709</i>	5.5 <i>0.217</i>	6.00 <i>0.236</i>	1.500 <i>0.059</i>
# SC100M-016-B-SK-C	M10x1.5 (10mm Standard)	16 <i>0.630</i>	Alloy Steel	18.0 <i>0.709</i>	5.5 <i>0.217</i>	6.00 <i>0.236</i>	1.500 <i>0.059</i>
# SC100M-018-B-SK-C	M10x1.5 (10mm Standard)	18 <i>0.709</i>	Alloy Steel	18.0 <i>0.709</i>	5.5 <i>0.217</i>	6.00 <i>0.236</i>	1.500 <i>0.059</i>
# SC100M-020-B-SK-C	M10x1.5 (10mm Standard)	20 <i>0.787</i>	Alloy Steel	18.0 <i>0.709</i>	5.5 <i>0.217</i>	6.00 <i>0.236</i>	1.500 <i>0.059</i>
SC100M-025-B-SK-C	M10x1.5 (10mm Standard)	25 <i>0.984</i>	Alloy Steel	18.0 <i>0.709</i>	5.5 <i>0.217</i>	6.00 <i>0.236</i>	1.500 <i>0.059</i>
SC100M-030-B-SK-C	M10x1.5 (10mm Standard)	30 <i>1.181</i>	Alloy Steel	18.0 <i>0.709</i>	5.5 <i>0.217</i>	6.00 <i>0.236</i>	1.500 <i>0.059</i>
# SC100M-035-B-SK-C	M10x1.5 (10mm Standard)	35 <i>1.378</i>	Alloy Steel	18.0 <i>0.709</i>	5.5 <i>0.217</i>	6.00 <i>0.236</i>	1.500 <i>0.059</i>

Indicates item not stocked at time of printing - Please enquire for lead time

Page 36 of 43

E&OE Pricing and all details subject to change without notice - Copyright Miniature Bearings Australia Pty Ltd
MBA Size Listings are a guide to sizes only and must not be solely relied on for critical design information.

Screws - Button - Socket - Alloy Steel

Part Number	Thread Size (C)	Length (L) mm	Material	Max Head Diameter mm	Max Head Height mm	Hex Key (D) mm	Pitch mm
		<i>inches</i>		<i>inches</i>	<i>inches</i>	<i>inches</i>	<i>inches</i>
SC100M-040-B-SK-C	M10x1.5 (10mm Standard)	40 <i>1.575</i>	Alloy Steel	18.0 <i>0.709</i>	5.5 <i>0.217</i>	6.00 <i>0.236</i>	1.500 <i>0.059</i>
# SC100M-045-B-SK-C	M10x1.5 (10mm Standard)	45 <i>1.772</i>	Alloy Steel	18.0 <i>0.709</i>	5.5 <i>0.217</i>	6.00 <i>0.236</i>	1.500 <i>0.059</i>
# SC100M-050-B-SK-C	M10x1.5 (10mm Standard)	50 <i>1.969</i>	Alloy Steel	18.0 <i>0.709</i>	5.5 <i>0.217</i>	6.00 <i>0.236</i>	1.500 <i>0.059</i>
# SC100M-055-B-SK-C	M10x1.5 (10mm Standard)	55 <i>2.165</i>	Alloy Steel	18.0 <i>0.709</i>	5.5 <i>0.217</i>	6.00 <i>0.236</i>	1.500 <i>0.059</i>
# SC100M-060-B-SK-C	M10x1.5 (10mm Standard)	60 <i>2.362</i>	Alloy Steel	18.0 <i>0.709</i>	5.5 <i>0.217</i>	6.00 <i>0.236</i>	1.500 <i>0.059</i>
SC100M-070-B-SK-C	M10x1.5 (10mm Standard)	70 <i>2.756</i>	Alloy Steel	18.0 <i>0.709</i>	5.5 <i>0.217</i>	6.00 <i>0.236</i>	1.500 <i>0.059</i>
# SC100M-080-B-SK-C	M10x1.5 (10mm Standard)	80 <i>3.150</i>	Alloy Steel	18.0 <i>0.709</i>	5.5 <i>0.217</i>	6.00 <i>0.236</i>	1.500 <i>0.059</i>
# SC100M-090-B-SK-C	M10x1.5 (10mm Standard)	90 <i>3.543</i>	Alloy Steel	18.0 <i>0.709</i>	5.5 <i>0.217</i>	6.00 <i>0.236</i>	1.500 <i>0.059</i>

Indicates item not stocked at time of printing - Please enquire for lead time

Page 37 of 43

E&OE Pricing and all details subject to change without notice - Copyright Miniature Bearings Australia Pty Ltd

MBA Size Listings are a guide to sizes only and must not be solely relied on for critical design information.

Screws - Button - Socket - Alloy Steel

Part Number	Thread Size (C)	Length (L) mm	Material	Max Head Diameter mm	Max Head Height mm	Hex Key (D) mm	Pitch mm
		<i>inches</i>		<i>inches</i>	<i>inches</i>	<i>inches</i>	<i>inches</i>
# SC100M-100-B-SK-C	M10x1.5 (10mm Standard)	100 <i>3.937</i>	Alloy Steel	18.0 <i>0.709</i>	5.5 <i>0.217</i>	6.00 <i>0.236</i>	1.500 <i>0.059</i>
# SC120M-016-B-SK-C	M12x1.75 (12mm Standard)	16 <i>0.630</i>	Alloy Steel	21.0 <i>0.827</i>	6.6 <i>0.260</i>	8.00 <i>0.315</i>	1.750 <i>0.069</i>
# SC120M-020-B-SK-C	M12x1.75 (12mm Standard)	20 <i>0.787</i>	Alloy Steel	21.0 <i>0.827</i>	6.6 <i>0.260</i>	8.00 <i>0.315</i>	1.750 <i>0.069</i>
# SC120M-025-B-SK-C	M12x1.75 (12mm Standard)	25 <i>0.984</i>	Alloy Steel	21.0 <i>0.827</i>	6.6 <i>0.260</i>	8.00 <i>0.315</i>	1.750 <i>0.069</i>
# SC120M-030-B-SK-C	M12x1.75 (12mm Standard)	30 <i>1.181</i>	Alloy Steel	21.0 <i>0.827</i>	6.6 <i>0.260</i>	8.00 <i>0.315</i>	1.750 <i>0.069</i>
# SC120M-035-B-SK-C	M12x1.75 (12mm Standard)	35 <i>1.378</i>	Alloy Steel	21.0 <i>0.827</i>	6.6 <i>0.260</i>	8.00 <i>0.315</i>	1.750 <i>0.069</i>
# SC120M-040-B-SK-C	M12x1.75 (12mm Standard)	40 <i>1.575</i>	Alloy Steel	21.0 <i>0.827</i>	6.6 <i>0.260</i>	8.00 <i>0.315</i>	1.750 <i>0.069</i>
# SC120M-045-B-SK-C	M12x1.75 (12mm Standard)	45 <i>1.772</i>	Alloy Steel	21.0 <i>0.827</i>	6.6 <i>0.260</i>	8.00 <i>0.315</i>	1.750 <i>0.069</i>

Indicates item not stocked at time of printing - Please enquire for lead time

Page 38 of 43

E&OE Pricing and all details subject to change without notice - Copyright Miniature Bearings Australia Pty Ltd
MBA Size Listings are a guide to sizes only and must not be solely relied on for critical design information.

Screws - Button - Socket - Alloy Steel

Part Number	Thread Size (C)	Length (L) mm	Material	Max Head Diameter mm	Max Head Height mm	Hex Key (D) mm	Pitch mm
		<i>inches</i>		<i>inches</i>	<i>inches</i>	<i>inches</i>	<i>inches</i>
# SC120M-050-B-SK-C	M12x1.75 (12mm Standard)	50 <i>1.969</i>	Alloy Steel	21.0 <i>0.827</i>	6.6 <i>0.260</i>	8.00 <i>0.315</i>	1.750 <i>0.069</i>
# SC120M-060-B-SK-C	M12x1.75 (12mm Standard)	60 <i>2.362</i>	Alloy Steel	21.0 <i>0.827</i>	6.6 <i>0.260</i>	8.00 <i>0.315</i>	1.750 <i>0.069</i>
# SC120M-070-B-SK-C	M12x1.75 (12mm Standard)	70 <i>2.756</i>	Alloy Steel	21.0 <i>0.827</i>	6.6 <i>0.260</i>	8.00 <i>0.315</i>	1.750 <i>0.069</i>
# SC120M-080-B-SK-C	M12x1.75 (12mm Standard)	80 <i>3.150</i>	Alloy Steel	21.0 <i>0.827</i>	6.6 <i>0.260</i>	8.00 <i>0.315</i>	1.750 <i>0.069</i>
# SC120M-090-B-SK-C	M12x1.75 (12mm Standard)	90 <i>3.543</i>	Alloy Steel	21.0 <i>0.827</i>	6.6 <i>0.260</i>	8.00 <i>0.315</i>	1.750 <i>0.069</i>
# SC120M-100-B-SK-C	M12x1.75 (12mm Standard)	100 <i>3.937</i>	Alloy Steel	21.0 <i>0.827</i>	6.6 <i>0.260</i>	8.00 <i>0.315</i>	1.750 <i>0.069</i>
SC127C-019-B-SK-C	1/2-13 UNC (12.7mm)	19.1 <i>0.752</i>	Alloy Steel	22.2 <i>0.874</i>	6.7 <i>0.264</i>	7.94 (5/16)	1.954 <i>0.077</i>
# SC127C-025-B-SK-C	1/2-13 UNC (12.7mm)	25.4 <i>1.000</i>	Alloy Steel	22.2 <i>0.874</i>	6.7 <i>0.264</i>	7.94 (5/16)	1.954 <i>0.077</i>
# SC127C-032-B-SK-C	1/2-13 UNC (12.7mm)	31.8 <i>1.252</i>	Alloy Steel	22.2 <i>0.874</i>	6.7 <i>0.264</i>	7.94 (5/16)	1.954 <i>0.077</i>

Indicates item not stocked at time of printing - Please enquire for lead time

Page 39 of 43

E&OE Pricing and all details subject to change without notice - Copyright Miniature Bearings Australia Pty Ltd
MBA Size Listings are a guide to sizes only and must not be solely relied on for critical design information.

Screws - Button - Socket - Alloy Steel

Part Number	Thread Size (C)	Length (L) mm	Material	Max Head Diameter mm	Max Head Height mm	Hex Key (D) mm	Pitch mm
		<i>inches</i>		<i>inches</i>	<i>inches</i>	<i>inches</i>	<i>inches</i>
# SC127C-038-B-SK-C	1/2-13 UNC (12.7mm)	38.1 <i>1.500</i>	Alloy Steel	22.2 <i>0.874</i>	6.7 <i>0.264</i>	7.94 (5/16)	1.954 <i>0.077</i>
# SC127C-045-B-SK-C	1/2-13 UNC (12.7mm)	44.5 <i>1.752</i>	Alloy Steel	22.2 <i>0.874</i>	6.7 <i>0.264</i>	7.94 (5/16)	1.954 <i>0.077</i>
# SC127C-051-B-SK-C	1/2-13 UNC (12.7mm)	50.8 <i>2.000</i>	Alloy Steel	22.2 <i>0.874</i>	6.7 <i>0.264</i>	7.94 (5/16)	1.954 <i>0.077</i>
# SC127C-057-B-SK-C	1/2-13 UNC (12.7mm)	57.20 <i>2.252</i>	Alloy Steel	22.2 <i>0.874</i>	6.7 <i>0.264</i>	7.94 (5/16)	1.954 <i>0.077</i>
# SC127C-064-B-SK-C	1/2-13 UNC (12.7mm)	63.5 <i>2.500</i>	Alloy Steel	22.2 <i>0.874</i>	6.7 <i>0.264</i>	7.94 (5/16)	1.954 <i>0.077</i>
# SC127C-076-B-SK-C	1/2-13 UNC (12.7mm)	76.2 <i>3.000</i>	Alloy Steel	22.2 <i>0.874</i>	6.7 <i>0.264</i>	7.94 (5/16)	1.954 <i>0.077</i>
# SC127C-089-B-SK-C	1/2-13 UNC (12.7mm)	88.90 <i>3.500</i>	Alloy Steel	22.2 <i>0.874</i>	6.7 <i>0.264</i>	7.94 (5/16)	1.954 <i>0.077</i>
# SC127W-019-B-SK-C	1/2-12 BSW (12.7mm)	19.1 <i>0.752</i>	Alloy Steel	22.2 <i>0.874</i>	6.7 <i>0.264</i>	7.94 (5/16)	2.117 <i>0.083</i>
# SC127W-025-B-SK-C	1/2-12 BSW (12.7mm)	25.4 <i>1.000</i>	Alloy Steel	22.2 <i>0.874</i>	6.7 <i>0.264</i>	7.94 (5/16)	2.117 <i>0.083</i>
# SC127W-032-B-SK-C	1/2-12 BSW (12.7mm)	31.8 <i>1.252</i>	Alloy Steel	22.2 <i>0.874</i>	6.7 <i>0.264</i>	7.94 (5/16)	2.117 <i>0.083</i>

Indicates item not stocked at time of printing - Please enquire for lead time

Page 40 of 43

E&OE Pricing and all details subject to change without notice - Copyright Miniature Bearings Australia Pty Ltd

MBA Size Listings are a guide to sizes only and must not be solely relied on for critical design information.

Screws - Button - Socket - Alloy Steel

Part Number	Thread Size (C)	Length (L) mm	Material	Max Head Diameter mm	Max Head Height mm	Hex Key (D) mm	Pitch mm
		<i>inches</i>		<i>inches</i>	<i>inches</i>	<i>inches</i>	<i>inches</i>
# SC127W-038-B-SK-C	1/2-12 BSW (12.7mm)	38.1 <i>1.500</i>	Alloy Steel	22.2 <i>0.874</i>	6.7 <i>0.264</i>	7.94 (5/16)	2.117 <i>0.083</i>
# SC127W-045-B-SK-C	1/2-12 BSW (12.7mm)	44.5 <i>1.752</i>	Alloy Steel	22.2 <i>0.874</i>	6.7 <i>0.264</i>	7.94 (5/16)	2.117 <i>0.083</i>
# SC127W-051-B-SK-C	1/2-12 BSW (12.7mm)	50.8 <i>2.000</i>	Alloy Steel	22.2 <i>0.874</i>	6.7 <i>0.264</i>	7.94 (5/16)	2.117 <i>0.083</i>
# SC127W-064-B-SK-C	1/2-12 BSW (12.7mm)	63.5 <i>2.500</i>	Alloy Steel	22.2 <i>0.874</i>	6.7 <i>0.264</i>	7.94 (5/16)	2.117 <i>0.083</i>
# SC127W-076-B-SK-C	1/2-12 BSW (12.7mm)	76.2 <i>3.000</i>	Alloy Steel	22.2 <i>0.874</i>	6.7 <i>0.264</i>	7.94 (5/16)	2.117 <i>0.083</i>
# SC127F-032-B-SK-C	1/2-20 UNF (12.7mm)	31.8 <i>1.252</i>	Alloy Steel	22.2 <i>0.874</i>	6.7 <i>0.264</i>	7.94 (5/16)	1.270 <i>0.050</i>
# SC127F-038-B-SK-C	1/2-20 UNF (12.7mm)	38.1 <i>1.500</i>	Alloy Steel	22.2 <i>0.874</i>	6.7 <i>0.264</i>	7.94 (5/16)	1.270 <i>0.050</i>
# SC127F-051-B-SK-C	1/2-20 UNF (12.7mm)	50.8 <i>2.000</i>	Alloy Steel	22.2 <i>0.874</i>	6.7 <i>0.264</i>	7.94 (5/16)	1.270 <i>0.050</i>
# SC159C-032-B-SK-C	5/8-11 UNC (15.875mm)	31.8 <i>1.252</i>	Alloy Steel	25.4 <i>1.000</i>	8.4 <i>0.331</i>	9.53 (3/8)	2.309 <i>0.091</i>
# SC159C-038-B-SK-C	5/8-11 UNC (15.875mm)	38.1 <i>1.500</i>	Alloy Steel	25.4 <i>1.000</i>	8.4 <i>0.331</i>	9.53 (3/8)	2.309 <i>0.091</i>

Indicates item not stocked at time of printing - Please enquire for lead time

Page 41 of 43

E&OE Pricing and all details subject to change without notice - Copyright Miniature Bearings Australia Pty Ltd
MBA Size Listings are a guide to sizes only and must not be solely relied on for critical design information.

Screws - Button - Socket - Alloy Steel

Part Number	Thread Size (C)	Length (L) mm	Material	Max Head Diameter mm	Max Head Height mm	Hex Key (D) mm	Pitch mm
		<i>inches</i>		<i>inches</i>	<i>inches</i>	<i>inches</i>	<i>inches</i>
# SC159C-045-B-SK-C	5/8-11 UNC (15.875mm)	44.5 <i>1.752</i>	Alloy Steel	25.4 <i>1.000</i>	8.4 <i>0.331</i>	9.53 (3/8)	2.309 <i>0.091</i>
# SC159C-051-B-SK-C	5/8-11 UNC (15.875mm)	50.8 <i>2.000</i>	Alloy Steel	25.4 <i>1.000</i>	8.4 <i>0.331</i>	9.53 (3/8)	2.309 <i>0.091</i>
# SC159C-064-B-SK-C	5/8-11 UNC (15.875mm)	63.5 <i>2.500</i>	Alloy Steel	25.4 <i>1.000</i>	8.4 <i>0.331</i>	9.53 (3/8)	2.309 <i>0.091</i>
# SC159C-076-B-SK-C	5/8-11 UNC (15.875mm)	76.2 <i>3.000</i>	Alloy Steel	25.4 <i>1.000</i>	8.4 <i>0.331</i>	9.53 (3/8)	2.309 <i>0.091</i>
# SC160M-025-B-SK-C	M16x2 (16mm Standard)	25 <i>0.984</i>	Alloy Steel	28.0 <i>1.102</i>	8.6 <i>0.339</i>	10.00 <i>0.394</i>	2.000 <i>0.079</i>
# SC160M-030-B-SK-C	M16x2 (16mm Standard)	30 <i>1.181</i>	Alloy Steel	28.0 <i>1.102</i>	8.6 <i>0.339</i>	10.00 <i>0.394</i>	2.000 <i>0.079</i>
# SC160M-035-B-SK-C	M16x2 (16mm Standard)	35 <i>1.378</i>	Alloy Steel	28.0 <i>1.102</i>	8.6 <i>0.339</i>	10.00 <i>0.394</i>	2.000 <i>0.079</i>
# SC160M-040-B-SK-C	M16x2 (16mm Standard)	40 <i>1.575</i>	Alloy Steel	28.0 <i>1.102</i>	8.6 <i>0.339</i>	10.00 <i>0.394</i>	2.000 <i>0.079</i>

Indicates item not stocked at time of printing - Please enquire for lead time

Page 42 of 43

E&OE Pricing and all details subject to change without notice - Copyright Miniature Bearings Australia Pty Ltd
MBA Size Listings are a guide to sizes only and must not be solely relied on for critical design information.

Screws - Button - Socket - Alloy Steel

Part Number	Thread Size (C)	Length (L) mm	Material	Max Head Diameter mm	Max Head Height mm	Hex Key (D) mm	Pitch mm
		<i>inches</i>		<i>inches</i>	<i>inches</i>	<i>inches</i>	<i>inches</i>
# SC160M-045-B-SK-C	M16x2 (16mm Standard)	45 <i>1.772</i>	Alloy Steel	28.0 <i>1.102</i>	8.6 <i>0.339</i>	10.00 <i>0.394</i>	2.000 <i>0.079</i>
# SC160M-050-B-SK-C	M16x2 (16mm Standard)	50 <i>1.969</i>	Alloy Steel	28.0 <i>1.102</i>	8.6 <i>0.339</i>	10.00 <i>0.394</i>	2.000 <i>0.079</i>
# SC160M-060-B-SK-C	M16x2 (16mm Standard)	60 <i>2.362</i>	Alloy Steel	28.0 <i>1.102</i>	8.6 <i>0.339</i>	10.00 <i>0.394</i>	2.000 <i>0.079</i>
# SC160M-070-B-SK-C	M16x2 (16mm Standard)	70 <i>2.756</i>	Alloy Steel	28.0 <i>1.102</i>	8.6 <i>0.339</i>	10.00 <i>0.394</i>	2.000 <i>0.079</i>
# SC160M-080-B-SK-C	M16x2 (16mm Standard)	80 <i>3.150</i>	Alloy Steel	28.0 <i>1.102</i>	8.6 <i>0.339</i>	10.00 <i>0.394</i>	2.000 <i>0.079</i>
# SC160M-090-B-SK-C	M16x2 (16mm Standard)	90 <i>3.543</i>	Alloy Steel	28.0 <i>1.102</i>	8.6 <i>0.339</i>	10.00 <i>0.394</i>	2.000 <i>0.079</i>
# SC160M-100-B-SK-C	M16x2 (16mm Standard)	100 <i>3.937</i>	Alloy Steel	28.0 <i>1.102</i>	8.6 <i>0.339</i>	10.00 <i>0.394</i>	2.000 <i>0.079</i>

Indicates item not stocked at time of printing - Please enquire for lead time

Page 43 of 43

E&OE Pricing and all details subject to change without notice - Copyright Miniature Bearings Australia Pty Ltd

MBA Size Listings are a guide to sizes only and must not be solely relied on for critical design information.

DISTRIBUTED BY

Distributed By:

