



# **Screws - Cap - Socket - Titanium Ti-Gr5/Ti-6Al4v - DIN912**

10/4/2018

# Indicates item not stocked at time of printing - Please enquire for lead time

E&OE Pricing and all details subject to change without notice - Copyright Miniature Bearings Australia Pty Ltd

MBA Size Listings are a guide to sizes only and must not be solely relied on for critical design information.

## INFORMATION

Metric Sizes to DIN912. Grade 5 6Al-4V is a high strength titanium alloy. Tensile Strength 91.5kgf / mm<sup>2</sup>. Yield Strength 84.5kgf / mm<sup>2</sup>. Elongation 10 Percent.

Used in critical aircraft structural components. UNS R56400.

Composition Percentage: Al 5.5-6.75, V 3.5-4.5, N 0.05, C 0.08, H 0.015, Fe 0.40, O 0.2, Ti Balance

Grade 5 6Al-4V is a high strength titanium alloy. Tensile Strength 91.5kgf / mm<sup>2</sup>. Yield Strength 84.5kgf / mm<sup>2</sup>. Elongation 10 Percent.

This catalogue to be read in conjunction with information at <http://www.minibearings.com.au//partslist/toolssetsfoldup/tools/all/1/>

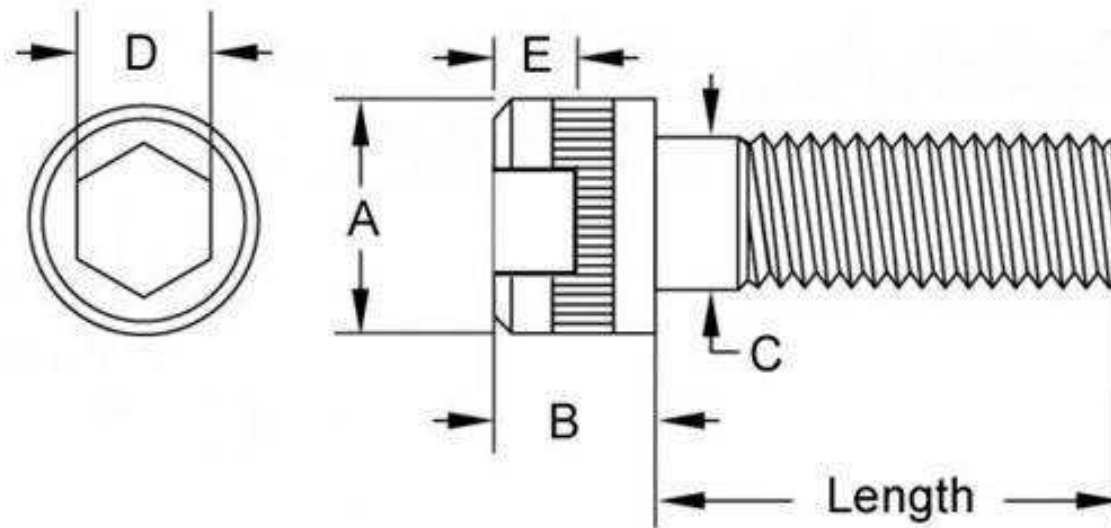
<http://www.minibearings.com.au//partslist/toolskeyshex/tools/all/1/>

<http://www.minibearings.com.au//partslist/toolsscrewdrivers/tools/all/1/>

# Indicates item not stocked at time of printing - Please enquire for lead time

E&OE Pricing and all details subject to change without notice - Copyright Miniature Bearings Australia Pty Ltd

MBA Size Listings are a guide to sizes only and must not be solely relied on for critical design information.



# Indicates item not stocked at time of printing - Please enquire for lead time

E&OE Pricing and all details subject to change without notice - Copyright Miniature Bearings Australia Pty Ltd

MBA Size Listings are a guide to sizes only and must not be solely relied on for critical design information.

## Screws - Cap - Socket - Titanium Ti-Gr5/Ti-6Al4v - DIN912

Part Number	Thread Size (C)	Length (L) mm	Material	Head Length (B Max.) mm	Head Diameter (A Max.) mm	Drive Depth (E) mm	Shank Diameter (C) mm	Hex Key (D) mm	Pitch mm
		<i>inches</i>		<i>inches</i>	<i>inches</i>	<i>inches</i>	<i>inches</i>	<i>inches</i>	<i>inches</i>
SC050M-010-C-SK-T5	M5x0.8 (5mm Standard)	10 <i>0.394</i>	6AL-4V Titanium Grade5	5.0 <i>0.197</i>	8.5 <i>0.335</i>	2.50 <i>0.098</i>	5.70 <i>0.224</i>	4.00 <i>0.157</i>	0.800 <i>0.031</i>
SC060M-010-C-SK-T5	M6x1 (6mm Standard)	10 <i>0.394</i>	6AL-4V Titanium Grade5	6.0 <i>0.236</i>	10.0 <i>0.394</i>	3.00 <i>0.118</i>	6.80 <i>0.268</i>	5.00 <i>0.197</i>	1.000 <i>0.039</i>
SC080M-010-C-SK-T5	M8x1.25 (8mm Standard)	10 <i>0.394</i>	6AL-4V Titanium Grade5	8.0 <i>0.315</i>	13.0 <i>0.512</i>	4.00 <i>0.157</i>	9.20 <i>0.362</i>	6.00 <i>0.236</i>	1.250 <i>0.049</i>

# Indicates item not stocked at time of printing - Please enquire for lead time

Page 4 of 4

E&OE Pricing and all details subject to change without notice - Copyright Miniature Bearings Australia Pty Ltd

MBA Size Listings are a guide to sizes only and must not be solely relied on for critical design information.

DISTRIBUTED BY

Distributed By:

