



Screws - Countersunk - Socket - 304 Stainless

10/4/2018

Indicates item not stocked at time of printing - Please enquire for lead time

E&OE Pricing and all details subject to change without notice - Copyright Miniature Bearings Australia Pty Ltd

MBA Size Listings are a guide to sizes only and must not be solely relied on for critical design information.

Page 1 of 39

INFORMATION

Flat Head Countersunk UNC - UNF - METRIC - Stainless Steel

Imperial Sizes to ANSI B18.3.

Metric Sizes to DIN7991.

ISO 10642

This catalogue to be read in conjunction with information at <http://www.minibearings.com.au//partslist/toolssetsfoldup/tools/all/1/>

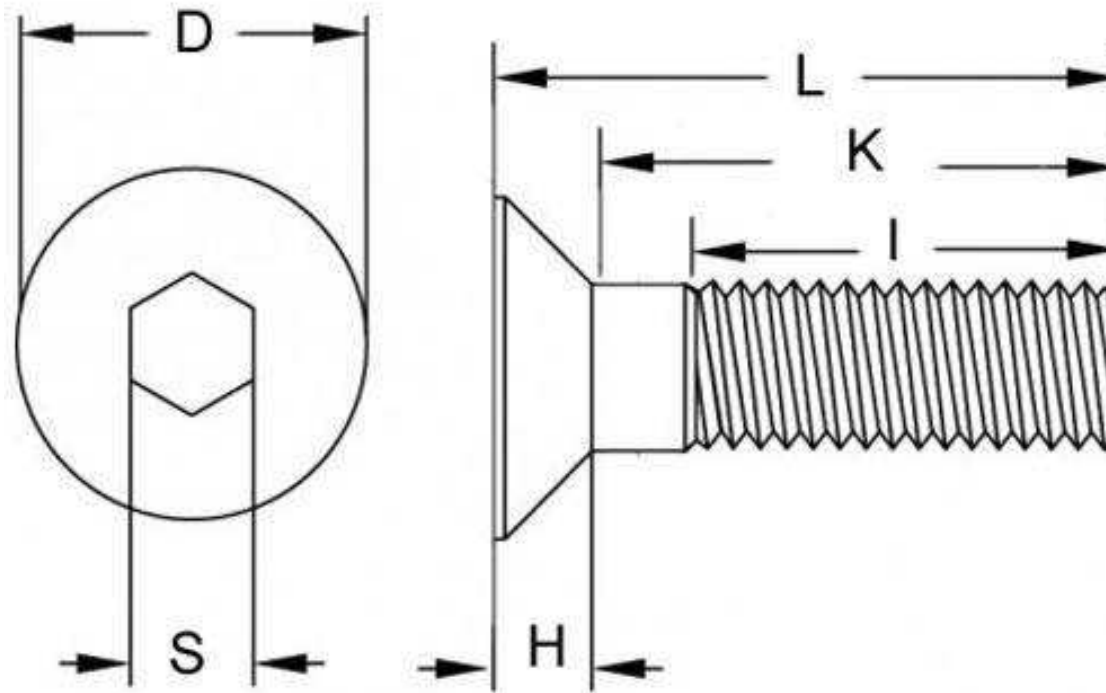
<http://www.minibearings.com.au//partslist/toolskeyshex/tools/all/1/>

<http://www.minibearings.com.au//partslist/toolsscrewdrivers/tools/all/1/>

Indicates item not stocked at time of printing - Please enquire for lead time

E&OE Pricing and all details subject to change without notice - Copyright Miniature Bearings Australia Pty Ltd

MBA Size Listings are a guide to sizes only and must not be solely relied on for critical design information.



Indicates item not stocked at time of printing - Please enquire for lead time

E&OE Pricing and all details subject to change without notice - Copyright Miniature Bearings Australia Pty Ltd

MBA Size Listings are a guide to sizes only and must not be solely relied on for critical design information.

Screws - Countersunk - Socket - 304 Stainless

Part Number	Thread Size (C)	Length (L) mm	Material	Head Diameter (A) mm	Max Head Height mm	Approx Thread Length (l) mm	Hex Key (s) mm	Pitch mm
		<i>inches</i>		<i>inches</i>	<i>inches</i>	<i>inches</i>	<i>inches</i>	<i>inches</i>
SK015F-003-SK-S4	0-80 UNF (1.524mm)	3.2 <i>0.126</i>	304 Stainless	3.5 <i>0.138</i>	1.1 <i>0.043</i>	Not Specified	0.89 (0.035in.)	0.318 <i>0.013</i>
SK015F-005-SK-S4	0-80 UNF (1.524mm)	4.8 <i>0.189</i>	304 Stainless	3.5 <i>0.138</i>	1.1 <i>0.043</i>	Not Specified	0.89 (0.035in.)	0.318 <i>0.013</i>
SK015F-006-SK-S4	0-80 UNF (1.524mm)	6.4 <i>0.252</i>	304 Stainless	3.5 <i>0.138</i>	1.1 <i>0.043</i>	Not Specified	0.89 (0.035in.)	0.318 <i>0.013</i>
SK015F-010-SK-S4	0-80 UNF (1.524mm)	9.5 <i>0.374</i>	304 Stainless	3.5 <i>0.138</i>	1.1 <i>0.043</i>	Not Specified	0.89 (0.035in.)	0.318 <i>0.013</i>
# SK019F-003-SK-S4	1-72 UNF (1.854mm)	3.2 <i>0.126</i>	304 Stainless	4.3 <i>0.169</i>	1.4 <i>0.055</i>	Not Specified	1.27 (0.050in.)	0.353 <i>0.014</i>
SK019F-006-SK-S4	1-72 UNF (1.854mm)	6.4 <i>0.252</i>	304 Stainless	4.3 <i>0.169</i>	1.4 <i>0.055</i>	Not Specified	1.27 (0.050in.)	0.353 <i>0.014</i>
SK020M-004-SK-S4	M2x0.4 (2mm Standard)	4 <i>0.157</i>	304 Stainless	3.8 <i>0.150</i>	1.2 <i>0.047</i>	Not Specified	1.27 (0.050in.)	0.400 <i>0.016</i>
SK020M-005-SK-S4	M2x0.4 (2mm Standard)	5 <i>0.197</i>	304 Stainless	3.8 <i>0.150</i>	1.2 <i>0.047</i>	Not Specified	1.27 (0.050in.)	0.400 <i>0.016</i>

Indicates item not stocked at time of printing - Please enquire for lead time

Page 4 of 39

E&OE Pricing and all details subject to change without notice - Copyright Miniature Bearings Australia Pty Ltd

MBA Size Listings are a guide to sizes only and must not be solely relied on for critical design information.

Screws - Countersunk - Socket - 304 Stainless

Part Number	Thread Size (C)	Length (L) mm	Material	Head Diameter (A) mm	Max Head Height mm	Approx Thread Length (l) mm	Hex Key (s) mm	Pitch mm
		<i>inches</i>		<i>inches</i>	<i>inches</i>	<i>inches</i>	<i>inches</i>	<i>inches</i>
SK020M-006-SK-S4	M2x0.4 (2mm Standard)	6	304 Stainless	3.8	1.2	Not Specified	1.27 (0.050in.)	0.400
		<i>0.236</i>		<i>0.150</i>	<i>0.047</i>			<i>0.016</i>
SK020M-008-SK-S4	M2x0.4 (2mm Standard)	8	304 Stainless	3.8	1.2	Not Specified	1.27 (0.050in.)	0.400
		<i>0.315</i>		<i>0.150</i>	<i>0.047</i>			<i>0.016</i>
SK020M-010-SK-S4	M2x0.4 (2mm Standard)	10	304 Stainless	3.8	1.2	Not Specified	1.27 (0.050in.)	0.400
		<i>0.394</i>		<i>0.150</i>	<i>0.047</i>			<i>0.016</i>
SK020M-012-SK-S4	M2x0.4 (2mm Standard)	12	304 Stainless	3.8	1.2	Not Specified	1.27 (0.050in.)	0.400
		<i>0.472</i>		<i>0.150</i>	<i>0.047</i>			<i>0.016</i>
SK020M-016-SK-S4	M2x0.4 (2mm Standard)	16	304 Stainless	3.8	1.2	Not Specified	1.27 (0.050in.)	0.400
		<i>0.630</i>		<i>0.150</i>	<i>0.047</i>			<i>0.016</i>
SK020M-020-SK-S4	M2x0.4 (2mm Standard)	20	304 Stainless	3.8	1.2	Not Specified	1.27 (0.050in.)	0.400
		<i>0.787</i>		<i>0.150</i>	<i>0.047</i>			<i>0.016</i>
SK020M-025-SK-S4	M2x0.4 (2mm Standard)	25	304 Stainless	3.8	1.2	Not Specified	1.27 (0.050in.)	0.400
		<i>0.984</i>		<i>0.150</i>	<i>0.047</i>			<i>0.016</i>
SK020M-030-SK-S4	M2x0.4 (2mm Standard)	30	304 Stainless	3.8	1.2	Not Specified	1.27 (0.050in.)	0.400
		<i>1.181</i>		<i>0.150</i>	<i>0.047</i>			<i>0.016</i>

Indicates item not stocked at time of printing - Please enquire for lead time

Page 5 of 39

E&OE Pricing and all details subject to change without notice - Copyright Miniature Bearings Australia Pty Ltd

MBA Size Listings are a guide to sizes only and must not be solely relied on for critical design information.

Screws - Countersunk - Socket - 304 Stainless

Part Number	Thread Size (C)	Length (L) mm	Material	Head Diameter (A) mm	Max Head Height mm	Approx Thread Length (I) mm	Hex Key (s) mm	Pitch mm
		<i>inches</i>		<i>inches</i>	<i>inches</i>	<i>inches</i>	<i>inches</i>	<i>inches</i>
SK022C-006-SK-S4	2-56 UNC (2.184mm)	6.4 <i>0.252</i>	304 Stainless	5.0 <i>0.197</i>	1.6 <i>0.063</i>	Not Specified	1.27 (0.050in.)	0.454 <i>0.018</i>
# SK022C-007-SK-S4	2-56 UNC (2.184mm)	7.9 <i>0.311</i>	304 Stainless	5.0 <i>0.197</i>	1.6 <i>0.063</i>	Not Specified	1.27 (0.050in.)	0.454 <i>0.018</i>
# SK022C-010-SK-S4	2-56 UNC (2.184mm)	9.5 <i>0.374</i>	304 Stainless	5.0 <i>0.197</i>	1.6 <i>0.063</i>	Not Specified	1.27 (0.050in.)	0.454 <i>0.018</i>
# SK022C-013-SK-S4	2-56 UNC (2.184mm)	12.7 <i>0.500</i>	304 Stainless	5.0 <i>0.197</i>	1.6 <i>0.063</i>	Not Specified	1.27 (0.050in.)	0.454 <i>0.018</i>
SK022C-016-SK-S4	2-56 UNC (2.184mm)	15.9 <i>0.626</i>	304 Stainless	5.0 <i>0.197</i>	1.6 <i>0.063</i>	Not Specified	1.27 (0.050in.)	0.454 <i>0.018</i>
SK022C-019-SK-S4	2-56 UNC (2.184mm)	19.1 <i>0.752</i>	304 Stainless	5.0 <i>0.197</i>	1.6 <i>0.063</i>	Not Specified	1.27 (0.050in.)	0.454 <i>0.018</i>
# SK022C-025-SK-S4	2-56 UNC (2.184mm)	25.4 <i>1.000</i>	304 Stainless	5.0 <i>0.197</i>	1.6 <i>0.063</i>	Not Specified	1.27 (0.050in.)	0.454 <i>0.018</i>
SK025M-004-SK-S4	M2.5x0.45 (2.5mm Standard)	4 <i>0.157</i>	304 Stainless	4.7 <i>0.185</i>	1.5 <i>0.059</i>	Not Specified	1.50 <i>0.059</i>	0.450 <i>0.018</i>

Indicates item not stocked at time of printing - Please enquire for lead time

Page 6 of 39

E&OE Pricing and all details subject to change without notice - Copyright Miniature Bearings Australia Pty Ltd

MBA Size Listings are a guide to sizes only and must not be solely relied on for critical design information.

Screws - Countersunk - Socket - 304 Stainless

Part Number	Thread Size (C)	Length (L) mm	Material	Head Diameter (A) mm	Max Head Height mm	Approx Thread Length (l) mm	Hex Key (s) mm	Pitch mm
		<i>inches</i>		<i>inches</i>	<i>inches</i>	<i>inches</i>	<i>inches</i>	<i>inches</i>
SK025M-005-SK-S4	M2.5x0.45 (2.5mm Standard)	5	304 Stainless	4.7	1.5	Not Specified	1.50	0.450
		<i>0.197</i>		<i>0.185</i>	<i>0.059</i>		<i>0.059</i>	<i>0.018</i>
SK025M-006-SK-S4	M2.5x0.45 (2.5mm Standard)	6	304 Stainless	4.7	1.5	Not Specified	1.50	0.450
		<i>0.236</i>		<i>0.185</i>	<i>0.059</i>		<i>0.059</i>	<i>0.018</i>
SK025M-008-SK-S4	M2.5x0.45 (2.5mm Standard)	8	304 Stainless	4.7	1.5	Not Specified	1.50	0.450
		<i>0.315</i>		<i>0.185</i>	<i>0.059</i>		<i>0.059</i>	<i>0.018</i>
SK025M-010-SK-S4	M2.5x0.45 (2.5mm Standard)	10	304 Stainless	4.7	1.5	Not Specified	1.50	0.450
		<i>0.394</i>		<i>0.185</i>	<i>0.059</i>		<i>0.059</i>	<i>0.018</i>
SK025M-012-SK-S4	M2.5x0.45 (2.5mm Standard)	12	304 Stainless	4.7	1.5	Not Specified	1.50	0.450
		<i>0.472</i>		<i>0.185</i>	<i>0.059</i>		<i>0.059</i>	<i>0.018</i>
SK025M-016-SK-S4	M2.5x0.45 (2.5mm Standard)	16	304 Stainless	4.7	1.5	Not Specified	1.50	0.450
		<i>0.630</i>		<i>0.185</i>	<i>0.059</i>		<i>0.059</i>	<i>0.018</i>
SK025M-020-SK-S4	M2.5x0.45 (2.5mm Standard)	20	304 Stainless	4.7	1.5	Not Specified	1.50	0.450
		<i>0.787</i>		<i>0.185</i>	<i>0.059</i>		<i>0.059</i>	<i>0.018</i>
# SK025M-025-SK-S4	M2.5x0.45 (2.5mm Standard)	25	304 Stainless	4.7	1.5	Not Specified	1.50	0.450
		<i>0.984</i>		<i>0.185</i>	<i>0.059</i>		<i>0.059</i>	<i>0.018</i>

Indicates item not stocked at time of printing - Please enquire for lead time

Page 7 of 39

E&OE Pricing and all details subject to change without notice - Copyright Miniature Bearings Australia Pty Ltd

MBA Size Listings are a guide to sizes only and must not be solely relied on for critical design information.

Screws - Countersunk - Socket - 304 Stainless

Part Number	Thread Size (C)	Length (L) mm	Material	Head Diameter (A) mm	Max Head Height mm	Approx Thread Length (l) mm	Hex Key (s) mm	Pitch mm
		<i>inches</i>		<i>inches</i>	<i>inches</i>	<i>inches</i>	<i>inches</i>	<i>inches</i>
# SK025M-030-SK-S4	M2.5x0.45 (2.5mm Standard)	30 <i>1.181</i>	304 Stainless	4.7 <i>0.185</i>	1.5 <i>0.059</i>	Not Specified	1.50 <i>0.059</i>	0.450 <i>0.018</i>
SK028C-005-SK-S4	4-40 UNC (2.845mm)	4.8 <i>0.189</i>	304 Stainless	6.5 <i>0.256</i>	2.1 <i>0.083</i>	Not Specified	1.59 (1/16)	0.635 <i>0.025</i>
SK028C-006-SK-S4	4-40 UNC (2.845mm)	6.4 <i>0.252</i>	304 Stainless	6.5 <i>0.256</i>	2.1 <i>0.083</i>	Not Specified	1.59 (1/16)	0.635 <i>0.025</i>
SK028C-007-SK-S4	4-40 UNC (2.845mm)	7.9 <i>0.311</i>	304 Stainless	6.5 <i>0.256</i>	2.1 <i>0.083</i>	Not Specified	1.59 (1/16)	0.635 <i>0.025</i>
SK028C-010-SK-S4	4-40 UNC (2.845mm)	9.5 <i>0.374</i>	304 Stainless	6.5 <i>0.256</i>	2.1 <i>0.083</i>	Not Specified	1.59 (1/16)	0.635 <i>0.025</i>
SK028C-013-SK-S4	4-40 UNC (2.845mm)	12.7 <i>0.500</i>	304 Stainless	6.5 <i>0.256</i>	2.1 <i>0.083</i>	Not Specified	1.59 (1/16)	0.635 <i>0.025</i>
# SK028C-016-SK-S4	4-40 UNC (2.845mm)	15.9 <i>0.626</i>	304 Stainless	6.5 <i>0.256</i>	2.1 <i>0.083</i>	Not Specified	1.59 (1/16)	0.635 <i>0.025</i>
SK028C-019-SK-S4	4-40 UNC (2.845mm)	19.1 <i>0.752</i>	304 Stainless	6.5 <i>0.256</i>	2.1 <i>0.083</i>	Not Specified	1.59 (1/16)	0.635 <i>0.025</i>

Indicates item not stocked at time of printing - Please enquire for lead time

Page 8 of 39

E&OE Pricing and all details subject to change without notice - Copyright Miniature Bearings Australia Pty Ltd

MBA Size Listings are a guide to sizes only and must not be solely relied on for critical design information.

Screws - Countersunk - Socket - 304 Stainless

Part Number	Thread Size (C)	Length (L) mm	Material	Head Diameter (A) mm	Max Head Height mm	Approx Thread Length (l) mm	Hex Key (s) mm	Pitch mm
		<i>inches</i>		<i>inches</i>	<i>inches</i>	<i>inches</i>	<i>inches</i>	<i>inches</i>
# SK028C-025-SK-S4	4-40 UNC (2.845mm)	25.4 <i>1.000</i>	304 Stainless	6.5 <i>0.256</i>	2.1 <i>0.083</i>	Not Specified	1.59 (1/16)	0.635 <i>0.025</i>
SK030M-005-SK-S4	M3x0.5 (3mm Standard)	5 <i>0.197</i>	304 Stainless	5.6 <i>0.220</i>	1.7 <i>0.067</i>	12 <i>0.472</i>	2.00 <i>0.079</i>	0.500 <i>0.020</i>
SK030M-006-SK-S4	M3x0.5 (3mm Standard)	6 <i>0.236</i>	304 Stainless	5.6 <i>0.220</i>	1.7 <i>0.067</i>	12 <i>0.472</i>	2.00 <i>0.079</i>	0.500 <i>0.020</i>
SK030M-008-SK-S4	M3x0.5 (3mm Standard)	8 <i>0.315</i>	304 Stainless	5.6 <i>0.220</i>	1.7 <i>0.067</i>	12 <i>0.472</i>	2.00 <i>0.079</i>	0.500 <i>0.020</i>
SK030M-010-SK-S4	M3x0.5 (3mm Standard)	10 <i>0.394</i>	304 Stainless	5.6 <i>0.220</i>	1.7 <i>0.067</i>	12 <i>0.472</i>	2.00 <i>0.079</i>	0.500 <i>0.020</i>
SK030M-012-SK-S4	M3x0.5 (3mm Standard)	12 <i>0.472</i>	304 Stainless	5.6 <i>0.220</i>	1.7 <i>0.067</i>	12 <i>0.472</i>	2.00 <i>0.079</i>	0.500 <i>0.020</i>
SK030M-016-SK-S4	M3x0.5 (3mm Standard)	16 <i>0.630</i>	304 Stainless	5.6 <i>0.220</i>	1.7 <i>0.067</i>	12 <i>0.472</i>	2.00 <i>0.079</i>	0.500 <i>0.020</i>
SK030M-020-SK-S4	M3x0.5 (3mm Standard)	20 <i>0.787</i>	304 Stainless	5.6 <i>0.220</i>	1.7 <i>0.067</i>	12 <i>0.472</i>	2.00 <i>0.079</i>	0.500 <i>0.020</i>

Indicates item not stocked at time of printing - Please enquire for lead time

Page 9 of 39

E&OE Pricing and all details subject to change without notice - Copyright Miniature Bearings Australia Pty Ltd

MBA Size Listings are a guide to sizes only and must not be solely relied on for critical design information.

Screws - Countersunk - Socket - 304 Stainless

Part Number	Thread Size (C)	Length (L) mm	Material	Head Diameter (A) mm	Max Head Height mm	Approx Thread Length (l) mm	Hex Key (s) mm	Pitch mm
		<i>inches</i>		<i>inches</i>	<i>inches</i>	<i>inches</i>	<i>inches</i>	<i>inches</i>
SK030M-025-SK-S4	M3x0.5 (3mm Standard)	25	304 Stainless	5.6	1.7	12	2.00	0.500
		<i>0.984</i>		<i>0.220</i>	<i>0.067</i>	<i>0.472</i>	<i>0.079</i>	<i>0.020</i>
SK030M-030-SK-S4	M3x0.5 (3mm Standard)	30	304 Stainless	5.6	1.7	12	2.00	0.500
		<i>1.181</i>		<i>0.220</i>	<i>0.067</i>	<i>0.472</i>	<i>0.079</i>	<i>0.020</i>
# SK030M-035-SK-S4	M3x0.5 (3mm Standard)	35	304 Stainless	5.6	1.7	12	2.00	0.500
		<i>1.378</i>		<i>0.220</i>	<i>0.067</i>	<i>0.472</i>	<i>0.079</i>	<i>0.020</i>
# SK030M-040-SK-S4	M3x0.5 (3mm Standard)	40	304 Stainless	5.6	1.7	12	2.00	0.500
		<i>1.575</i>		<i>0.220</i>	<i>0.067</i>	<i>0.472</i>	<i>0.079</i>	<i>0.020</i>
# SK030M-045-SK-S4	M3x0.5 (3mm Standard)	45	304 Stainless	5.6	1.7	12	2.00	0.500
		<i>1.772</i>		<i>0.220</i>	<i>0.067</i>	<i>0.472</i>	<i>0.079</i>	<i>0.020</i>
# SK030M-050-SK-S4	M3x0.5 (3mm Standard)	50	304 Stainless	5.6	1.7	12	2.00	0.500
		<i>1.969</i>		<i>0.220</i>	<i>0.067</i>	<i>0.472</i>	<i>0.079</i>	<i>0.020</i>
# SK032C-006-SK-S4	5-40 UNC (3.175mm)	6.4	304 Stainless	7.1	2.3	Not Specified	1.98 (5/64)	0.635
		<i>0.252</i>		<i>0.280</i>	<i>0.091</i>			<i>0.025</i>
# SK032C-010-SK-S4	5-40 UNC (3.175mm)	9.5	304 Stainless	7.1	2.3	Not Specified	1.98 (5/64)	0.635
		<i>0.374</i>		<i>0.280</i>	<i>0.091</i>			<i>0.025</i>

Indicates item not stocked at time of printing - Please enquire for lead time

Page 10 of 39

E&OE Pricing and all details subject to change without notice - Copyright Miniature Bearings Australia Pty Ltd

MBA Size Listings are a guide to sizes only and must not be solely relied on for critical design information.

Screws - Countersunk - Socket - 304 Stainless

Part Number	Thread Size (C)	Length (L) mm	Material	Head Diameter (A) mm	Max Head Height mm	Approx Thread Length (l) mm	Hex Key (s) mm	Pitch mm
		<i>inches</i>		<i>inches</i>	<i>inches</i>	<i>inches</i>	<i>inches</i>	<i>inches</i>
SK032C-013-SK-S4	5-40 UNC (3.175mm)	12.7 <i>0.500</i>	304 Stainless	7.1 <i>0.280</i>	2.3 <i>0.091</i>	Not Specified	1.98 (5/64)	0.635 <i>0.025</i>
# SK032C-016-SK-S4	5-40 UNC (3.175mm)	15.9 <i>0.626</i>	304 Stainless	7.1 <i>0.280</i>	2.3 <i>0.091</i>	Not Specified	1.98 (5/64)	0.635 <i>0.025</i>
SK032C-019-SK-S4	5-40 UNC (3.175mm)	19.1 <i>0.752</i>	304 Stainless	7.1 <i>0.280</i>	2.3 <i>0.091</i>	Not Specified	1.98 (5/64)	0.635 <i>0.025</i>
# SK035C-005-SK-S4	6-32 UNC (3.5mm)	4.8 <i>0.189</i>	304 Stainless	7.8 <i>0.307</i>	2.5 <i>0.098</i>	Not Specified	1.98 (5/64)	0.794 <i>0.031</i>
SK035C-006-SK-S4	6-32 UNC (3.5mm)	6.4 <i>0.252</i>	304 Stainless	7.8 <i>0.307</i>	2.5 <i>0.098</i>	Not Specified	1.98 (5/64)	0.794 <i>0.031</i>
# SK035C-007-SK-S4	6-32 UNC (3.5mm)	7.9 <i>0.311</i>	304 Stainless	7.8 <i>0.307</i>	2.5 <i>0.098</i>	Not Specified	1.98 (5/64)	0.794 <i>0.031</i>
# SK035C-010-SK-S4	6-32 UNC (3.5mm)	9.5 <i>0.374</i>	304 Stainless	7.8 <i>0.307</i>	2.5 <i>0.098</i>	Not Specified	1.98 (5/64)	0.794 <i>0.031</i>
SK035C-011-SK-S4	6-32 UNC (3.5mm)	11.1 <i>0.437</i>	304 Stainless	7.8 <i>0.307</i>	2.5 <i>0.098</i>	Not Specified	1.98 (5/64)	0.794 <i>0.031</i>
SK035C-013-SK-S4	6-32 UNC (3.5mm)	12.7 <i>0.500</i>	304 Stainless	7.8 <i>0.307</i>	2.5 <i>0.098</i>	Not Specified	1.98 (5/64)	0.794 <i>0.031</i>

Indicates item not stocked at time of printing - Please enquire for lead time

Page 11 of 39

E&OE Pricing and all details subject to change without notice - Copyright Miniature Bearings Australia Pty Ltd

MBA Size Listings are a guide to sizes only and must not be solely relied on for critical design information.

Screws - Countersunk - Socket - 304 Stainless

Part Number	Thread Size (C)	Length (L) mm	Material	Head Diameter (A) mm	Max Head Height mm	Approx Thread Length (l) mm	Hex Key (s) mm	Pitch mm
		<i>inches</i>		<i>inches</i>	<i>inches</i>	<i>inches</i>	<i>inches</i>	<i>inches</i>
# SK035C-016-SK-S4	6-32 UNC (3.5mm)	15.9 <i>0.626</i>	304 Stainless	7.8 <i>0.307</i>	2.5 <i>0.098</i>	Not Specified	1.98 (5/64)	0.794 <i>0.031</i>
SK035C-019-SK-S4	6-32 UNC (3.5mm)	19.1 <i>0.752</i>	304 Stainless	7.8 <i>0.307</i>	2.5 <i>0.098</i>	Not Specified	1.98 (5/64)	0.794 <i>0.031</i>
# SK035C-025-SK-S4	6-32 UNC (3.5mm)	25.4 <i>1.000</i>	304 Stainless	7.8 <i>0.307</i>	2.5 <i>0.098</i>	Not Specified	1.98 (5/64)	0.794 <i>0.031</i>
SK040M-006-SK-S4	M4x0.7 (4mm Standard)	6 <i>0.236</i>	304 Stainless	7.5 <i>0.295</i>	2.3 <i>0.091</i>	14 <i>0.551</i>	2.50 <i>0.098</i>	0.700 <i>0.028</i>
SK040M-008-SK-S4	M4x0.7 (4mm Standard)	8 <i>0.315</i>	304 Stainless	7.5 <i>0.295</i>	2.3 <i>0.091</i>	14 <i>0.551</i>	2.50 <i>0.098</i>	0.700 <i>0.028</i>
SK040M-010-SK-S4	M4x0.7 (4mm Standard)	10 <i>0.394</i>	304 Stainless	7.5 <i>0.295</i>	2.3 <i>0.091</i>	14 <i>0.551</i>	2.50 <i>0.098</i>	0.700 <i>0.028</i>
SK040M-012-SK-S4	M4x0.7 (4mm Standard)	12 <i>0.472</i>	304 Stainless	7.5 <i>0.295</i>	2.3 <i>0.091</i>	14 <i>0.551</i>	2.50 <i>0.098</i>	0.700 <i>0.028</i>
SK040M-016-SK-S4	M4x0.7 (4mm Standard)	16 <i>0.630</i>	304 Stainless	7.5 <i>0.295</i>	2.3 <i>0.091</i>	14 <i>0.551</i>	2.50 <i>0.098</i>	0.700 <i>0.028</i>
SK040M-020-SK-S4	M4x0.7 (4mm Standard)	20 <i>0.787</i>	304 Stainless	7.5 <i>0.295</i>	2.3 <i>0.091</i>	14 <i>0.551</i>	2.50 <i>0.098</i>	0.700 <i>0.028</i>

Indicates item not stocked at time of printing - Please enquire for lead time

Page 12 of 39

E&OE Pricing and all details subject to change without notice - Copyright Miniature Bearings Australia Pty Ltd

MBA Size Listings are a guide to sizes only and must not be solely relied on for critical design information.

Screws - Countersunk - Socket - 304 Stainless

Part Number	Thread Size (C)	Length (L) mm	Material	Head Diameter (A) mm	Max Head Height mm	Approx Thread Length (l) mm	Hex Key (s) mm	Pitch mm
		<i>inches</i>		<i>inches</i>	<i>inches</i>	<i>inches</i>	<i>inches</i>	<i>inches</i>
SK040M-025-SK-S4	M4x0.7 (4mm Standard)	25	304 Stainless	7.5	2.3	14	2.50	0.700
		<i>0.984</i>		<i>0.295</i>	<i>0.091</i>	<i>0.551</i>	<i>0.098</i>	<i>0.028</i>
SK040M-030-SK-S4	M4x0.7 (4mm Standard)	30	304 Stainless	7.5	2.3	14	2.50	0.700
		<i>1.181</i>		<i>0.295</i>	<i>0.091</i>	<i>0.551</i>	<i>0.098</i>	<i>0.028</i>
# SK040M-035-SK-S4	M4x0.7 (4mm Standard)	35	304 Stainless	7.5	2.3	14	2.50	0.700
		<i>1.378</i>		<i>0.295</i>	<i>0.091</i>	<i>0.551</i>	<i>0.098</i>	<i>0.028</i>
SK040M-040-SK-S4	M4x0.7 (4mm Standard)	40	304 Stainless	7.5	2.3	14	2.50	0.700
		<i>1.575</i>		<i>0.295</i>	<i>0.091</i>	<i>0.551</i>	<i>0.098</i>	<i>0.028</i>
SK040M-045-SK-S4	M4x0.7 (4mm Standard)	45	304 Stainless	7.5	2.3	14	2.50	0.700
		<i>1.772</i>		<i>0.295</i>	<i>0.091</i>	<i>0.551</i>	<i>0.098</i>	<i>0.028</i>
SK040M-050-SK-S4	M4x0.7 (4mm Standard)	50	304 Stainless	7.5	2.3	14	2.50	0.700
		<i>1.969</i>		<i>0.295</i>	<i>0.091</i>	<i>0.551</i>	<i>0.098</i>	<i>0.028</i>
# SK040M-060-SK-S4	M4x0.7 (4mm Standard)	60	304 Stainless	7.5	2.3	14	2.50	0.700
		<i>2.362</i>		<i>0.295</i>	<i>0.091</i>	<i>0.551</i>	<i>0.098</i>	<i>0.028</i>
# SK042C-006-SK-S4	8-32 UNC (4.166mm)	6.4	304 Stainless	9.1	2.8	Not Specified	2.38 (3/32)	0.794
		<i>0.252</i>		<i>0.358</i>	<i>0.110</i>			<i>0.031</i>

Indicates item not stocked at time of printing - Please enquire for lead time

Page 13 of 39

E&OE Pricing and all details subject to change without notice - Copyright Miniature Bearings Australia Pty Ltd

MBA Size Listings are a guide to sizes only and must not be solely relied on for critical design information.

Screws - Countersunk - Socket - 304 Stainless

Part Number	Thread Size (C)	Length (L) mm	Material	Head Diameter (A) mm	Max Head Height mm	Approx Thread Length (l) mm	Hex Key (s) mm	Pitch mm
		<i>inches</i>		<i>inches</i>	<i>inches</i>	<i>inches</i>	<i>inches</i>	<i>inches</i>
SK042C-010-SK-S4	8-32 UNC (4.166mm)	9.5 <i>0.374</i>	304 Stainless	9.1 <i>0.358</i>	2.8 <i>0.110</i>	Not Specified	2.38 (3/32)	0.794 <i>0.031</i>
SK042C-013-SK-S4	8-32 UNC (4.166mm)	12.7 <i>0.500</i>	304 Stainless	9.1 <i>0.358</i>	2.8 <i>0.110</i>	Not Specified	2.38 (3/32)	0.794 <i>0.031</i>
SK042C-016-SK-S4	8-32 UNC (4.166mm)	15.9 <i>0.626</i>	304 Stainless	9.1 <i>0.358</i>	2.8 <i>0.110</i>	Not Specified	2.38 (3/32)	0.794 <i>0.031</i>
# SK042C-019-SK-S4	8-32 UNC (4.166mm)	19.1 <i>0.752</i>	304 Stainless	9.1 <i>0.358</i>	2.8 <i>0.110</i>	Not Specified	2.38 (3/32)	0.794 <i>0.031</i>
# SK042C-025-SK-S4	8-32 UNC (4.166mm)	25.4 <i>1.000</i>	304 Stainless	9.1 <i>0.358</i>	2.8 <i>0.110</i>	Not Specified	2.38 (3/32)	0.794 <i>0.031</i>
# SK042C-032-SK-S4	8-32 UNC (4.166mm)	31.8 <i>1.252</i>	304 Stainless	9.1 <i>0.358</i>	2.8 <i>0.110</i>	Not Specified	2.38 (3/32)	0.794 <i>0.031</i>
# SK042C-038-SK-S4	8-32 UNC (4.166mm)	38.1 <i>1.500</i>	304 Stainless	9.1 <i>0.358</i>	2.8 <i>0.110</i>	Not Specified	2.38 (3/32)	0.794 <i>0.031</i>
# SK048C-006-SK-S4	10-24 UNC (4.762mm)	6.4 <i>0.252</i>	304 Stainless	10.4 <i>0.409</i>	3.2 <i>0.126</i>	Not Specified	3.18 (1/8)	1.058 <i>0.042</i>

Indicates item not stocked at time of printing - Please enquire for lead time

Page 14 of 39

E&OE Pricing and all details subject to change without notice - Copyright Miniature Bearings Australia Pty Ltd

MBA Size Listings are a guide to sizes only and must not be solely relied on for critical design information.

Screws - Countersunk - Socket - 304 Stainless

Part Number	Thread Size (C)	Length (L) mm	Material	Head Diameter (A) mm	Max Head Height mm	Approx Thread Length (I) mm	Hex Key (s) mm	Pitch mm
		<i>inches</i>		<i>inches</i>	<i>inches</i>	<i>inches</i>	<i>inches</i>	<i>inches</i>
# SK048C-007-SK-S4	10-24 UNC (4.762mm)	7.9 <i>0.311</i>	304 Stainless	10.4 <i>0.409</i>	3.2 <i>0.126</i>	Not Specified	3.18 (1/8)	1.058 <i>0.042</i>
# SK048C-010-SK-S4	10-24 UNC (4.762mm)	9.5 <i>0.374</i>	304 Stainless	10.4 <i>0.409</i>	3.2 <i>0.126</i>	Not Specified	3.18 (1/8)	1.058 <i>0.042</i>
# SK048C-013-SK-S4	10-24 UNC (4.762mm)	12.7 <i>0.500</i>	304 Stainless	10.4 <i>0.409</i>	3.2 <i>0.126</i>	Not Specified	3.18 (1/8)	1.058 <i>0.042</i>
SK048C-016-SK-S4	10-24 UNC (4.762mm)	15.9 <i>0.626</i>	304 Stainless	10.4 <i>0.409</i>	3.2 <i>0.126</i>	Not Specified	3.18 (1/8)	1.058 <i>0.042</i>
SK048C-019-SK-S4	10-24 UNC (4.762mm)	19.1 <i>0.752</i>	304 Stainless	10.4 <i>0.409</i>	3.2 <i>0.126</i>	Not Specified	3.18 (1/8)	1.058 <i>0.042</i>
# SK048C-025-SK-S4	10-24 UNC (4.762mm)	25.4 <i>1.000</i>	304 Stainless	10.4 <i>0.409</i>	3.2 <i>0.126</i>	Not Specified	3.18 (1/8)	1.058 <i>0.042</i>
# SK048C-032-SK-S4	10-24 UNC (4.762mm)	31.8 <i>1.252</i>	304 Stainless	10.4 <i>0.409</i>	3.2 <i>0.126</i>	Not Specified	3.18 (1/8)	1.058 <i>0.042</i>
# SK048C-038-SK-S4	10-24 UNC (4.762mm)	38.1 <i>1.500</i>	304 Stainless	10.4 <i>0.409</i>	3.2 <i>0.126</i>	Not Specified	3.18 (1/8)	1.058 <i>0.042</i>

Indicates item not stocked at time of printing - Please enquire for lead time

Page 15 of 39

E&OE Pricing and all details subject to change without notice - Copyright Miniature Bearings Australia Pty Ltd

MBA Size Listings are a guide to sizes only and must not be solely relied on for critical design information.

Screws - Countersunk - Socket - 304 Stainless

Part Number	Thread Size (C)	Length (L) mm	Material	Head Diameter (A) mm	Max Head Height mm	Approx Thread Length (I) mm	Hex Key (s) mm	Pitch mm
		<i>inches</i>		<i>inches</i>	<i>inches</i>	<i>inches</i>	<i>inches</i>	<i>inches</i>
# SK048C-051-SK-S4	10-24 UNC (4.762mm)	50.8 <i>2.000</i>	304 Stainless	10.4 <i>0.409</i>	3.2 <i>0.126</i>	Not Specified	3.18 (1/8)	1.058 <i>0.042</i>
# SK048F-006-SK-S4	10-32 UNF (4.762mm)	6.4 <i>0.252</i>	304 Stainless	10.4 <i>0.409</i>	3.2 <i>0.126</i>	Not Specified	3.18 (1/8)	0.794 <i>0.031</i>
# SK048F-010-SK-S4	10-32 UNF (4.762mm)	9.5 <i>0.374</i>	304 Stainless	10.4 <i>0.409</i>	3.2 <i>0.126</i>	Not Specified	3.18 (1/8)	0.794 <i>0.031</i>
SK048F-013-SK-S4	10-32 UNF (4.762mm)	12.7 <i>0.500</i>	304 Stainless	10.4 <i>0.409</i>	3.2 <i>0.126</i>	Not Specified	3.18 (1/8)	0.794 <i>0.031</i>
# SK048F-016-SK-S4	10-32 UNF (4.762mm)	15.9 <i>0.626</i>	304 Stainless	10.4 <i>0.409</i>	3.2 <i>0.126</i>	Not Specified	3.18 (1/8)	0.794 <i>0.031</i>
SK048F-019-SK-S4	10-32 UNF (4.762mm)	19.1 <i>0.752</i>	304 Stainless	10.4 <i>0.409</i>	3.2 <i>0.126</i>	Not Specified	3.18 (1/8)	0.794 <i>0.031</i>
SK048F-025-SK-S4	10-32 UNF (4.762mm)	25.4 <i>1.000</i>	304 Stainless	10.4 <i>0.409</i>	3.2 <i>0.126</i>	Not Specified	3.18 (1/8)	0.794 <i>0.031</i>
# SK048F-032-SK-S4	10-32 UNF (4.762mm)	31.8 <i>1.252</i>	304 Stainless	10.4 <i>0.409</i>	3.2 <i>0.126</i>	Not Specified	3.18 (1/8)	0.794 <i>0.031</i>

Indicates item not stocked at time of printing - Please enquire for lead time

Page 16 of 39

E&OE Pricing and all details subject to change without notice - Copyright Miniature Bearings Australia Pty Ltd

MBA Size Listings are a guide to sizes only and must not be solely relied on for critical design information.

Screws - Countersunk - Socket - 304 Stainless

Part Number	Thread Size (C)	Length (L) mm	Material	Head Diameter (A) mm	Max Head Height mm	Approx Thread Length (I) mm	Hex Key (s) mm	Pitch mm
		<i>inches</i>		<i>inches</i>	<i>inches</i>	<i>inches</i>	<i>inches</i>	<i>inches</i>
SK048F-038-SK-S4	10-32 UNF (4.762mm)	38.1 <i>1.500</i>	304 Stainless	10.4 <i>0.409</i>	3.2 <i>0.126</i>	Not Specified	3.18 (1/8)	0.794 <i>0.031</i>
# SK048F-051-SK-S4	10-32 UNF (4.762mm)	50.8 <i>2.000</i>	304 Stainless	10.4 <i>0.409</i>	3.2 <i>0.126</i>	Not Specified	3.18 (1/8)	0.794 <i>0.031</i>
# SK050M-006-SK-S4	M5x0.8 (5mm Standard)	6 <i>0.236</i>	304 Stainless	9.2 <i>0.362</i>	2.8 <i>0.110</i>	16 <i>0.630</i>	3.00 <i>0.118</i>	0.800 <i>0.031</i>
SK050M-008-SK-S4	M5x0.8 (5mm Standard)	8 <i>0.315</i>	304 Stainless	9.2 <i>0.362</i>	2.8 <i>0.110</i>	16 <i>0.630</i>	3.00 <i>0.118</i>	0.800 <i>0.031</i>
SK050M-010-SK-S4	M5x0.8 (5mm Standard)	10 <i>0.394</i>	304 Stainless	9.2 <i>0.362</i>	2.8 <i>0.110</i>	16 <i>0.630</i>	3.00 <i>0.118</i>	0.800 <i>0.031</i>
SK050M-012-SK-S4	M5x0.8 (5mm Standard)	12 <i>0.472</i>	304 Stainless	9.2 <i>0.362</i>	2.8 <i>0.110</i>	16 <i>0.630</i>	3.00 <i>0.118</i>	0.800 <i>0.031</i>
SK050M-016-SK-S4	M5x0.8 (5mm Standard)	16 <i>0.630</i>	304 Stainless	9.2 <i>0.362</i>	2.8 <i>0.110</i>	16 <i>0.630</i>	3.00 <i>0.118</i>	0.800 <i>0.031</i>
# SK050M-018-SK-S4	M5x0.8 (5mm Standard)	18 <i>0.709</i>	304 Stainless	9.2 <i>0.362</i>	2.8 <i>0.110</i>	16 <i>0.630</i>	3.00 <i>0.118</i>	0.800 <i>0.031</i>

Indicates item not stocked at time of printing - Please enquire for lead time

Page 17 of 39

E&OE Pricing and all details subject to change without notice - Copyright Miniature Bearings Australia Pty Ltd

MBA Size Listings are a guide to sizes only and must not be solely relied on for critical design information.

Screws - Countersunk - Socket - 304 Stainless

Part Number	Thread Size (C)	Length (L) mm	Material	Head Diameter (A) mm	Max Head Height mm	Approx Thread Length (I) mm	Hex Key (s) mm	Pitch mm
		<i>inches</i>		<i>inches</i>	<i>inches</i>	<i>inches</i>	<i>inches</i>	<i>inches</i>
SK050M-020-SK-S4	M5x0.8 (5mm Standard)	20	304 Stainless	9.2	2.8	16	3.00	0.800
		<i>0.787</i>		<i>0.362</i>	<i>0.110</i>	<i>0.630</i>	<i>0.118</i>	<i>0.031</i>
# SK050M-025-SK-S4	M5x0.8 (5mm Standard)	25	304 Stainless	9.2	2.8	16	3.00	0.800
		<i>0.984</i>		<i>0.362</i>	<i>0.110</i>	<i>0.630</i>	<i>0.118</i>	<i>0.031</i>
SK050M-030-SK-S4	M5x0.8 (5mm Standard)	30	304 Stainless	9.2	2.8	16	3.00	0.800
		<i>1.181</i>		<i>0.362</i>	<i>0.110</i>	<i>0.630</i>	<i>0.118</i>	<i>0.031</i>
# SK050M-035-SK-S4	M5x0.8 (5mm Standard)	35	304 Stainless	9.2	2.8	16	3.00	0.800
		<i>1.378</i>		<i>0.362</i>	<i>0.110</i>	<i>0.630</i>	<i>0.118</i>	<i>0.031</i>
# SK050M-040-SK-S4	M5x0.8 (5mm Standard)	40	304 Stainless	9.2	2.8	16	3.00	0.800
		<i>1.575</i>		<i>0.362</i>	<i>0.110</i>	<i>0.630</i>	<i>0.118</i>	<i>0.031</i>
# SK050M-045-SK-S4	M5x0.8 (5mm Standard)	45	304 Stainless	9.2	2.8	16	3.00	0.800
		<i>1.772</i>		<i>0.362</i>	<i>0.110</i>	<i>0.630</i>	<i>0.118</i>	<i>0.031</i>
# SK050M-050-SK-S4	M5x0.8 (5mm Standard)	50	304 Stainless	9.2	2.8	16	3.00	0.800
		<i>1.969</i>		<i>0.362</i>	<i>0.110</i>	<i>0.630</i>	<i>0.118</i>	<i>0.031</i>
# SK050M-060-SK-S4	M5x0.8 (5mm Standard)	60	304 Stainless	9.2	2.8	16	3.00	0.800
		<i>2.362</i>		<i>0.362</i>	<i>0.110</i>	<i>0.630</i>	<i>0.118</i>	<i>0.031</i>

Indicates item not stocked at time of printing - Please enquire for lead time

Page 18 of 39

E&OE Pricing and all details subject to change without notice - Copyright Miniature Bearings Australia Pty Ltd

MBA Size Listings are a guide to sizes only and must not be solely relied on for critical design information.

Screws - Countersunk - Socket - 304 Stainless

Part Number	Thread Size (C)	Length (L) mm	Material	Head Diameter (A) mm	Max Head Height mm	Approx Thread Length (l) mm	Hex Key (s) mm	Pitch mm
		<i>inches</i>		<i>inches</i>	<i>inches</i>	<i>inches</i>	<i>inches</i>	<i>inches</i>
# SK050M-080-SK-S4	M5x0.8 (5mm Standard)	80	304 Stainless	9.2	2.8	16	3.00	0.800
		<i>3.150</i>		<i>0.362</i>	<i>0.110</i>	<i>0.630</i>	<i>0.118</i>	<i>0.031</i>
SK060M-008-SK-S4	M6x1 (6mm Standard)	8	304 Stainless	11.0	3.3	18	4.00	1.000
		<i>0.315</i>		<i>0.433</i>	<i>0.130</i>	<i>0.709</i>	<i>0.157</i>	<i>0.039</i>
SK060M-010-SK-S4	M6x1 (6mm Standard)	10	304 Stainless	11.0	3.3	18	4.00	1.000
		<i>0.394</i>		<i>0.433</i>	<i>0.130</i>	<i>0.709</i>	<i>0.157</i>	<i>0.039</i>
SK060M-012-SK-S4	M6x1 (6mm Standard)	12	304 Stainless	11.0	3.3	18	4.00	1.000
		<i>0.472</i>		<i>0.433</i>	<i>0.130</i>	<i>0.709</i>	<i>0.157</i>	<i>0.039</i>
SK060M-016-SK-S4	M6x1 (6mm Standard)	16	304 Stainless	11.0	3.3	18	4.00	1.000
		<i>0.630</i>		<i>0.433</i>	<i>0.130</i>	<i>0.709</i>	<i>0.157</i>	<i>0.039</i>
SK060M-020-SK-S4	M6x1 (6mm Standard)	20	304 Stainless	11.0	3.3	18	4.00	1.000
		<i>0.787</i>		<i>0.433</i>	<i>0.130</i>	<i>0.709</i>	<i>0.157</i>	<i>0.039</i>
SK060M-025-SK-S4	M6x1 (6mm Standard)	25	304 Stainless	11.0	3.3	18	4.00	1.000
		<i>0.984</i>		<i>0.433</i>	<i>0.130</i>	<i>0.709</i>	<i>0.157</i>	<i>0.039</i>
SK060M-030-SK-S4	M6x1 (6mm Standard)	30	304 Stainless	11.0	3.3	18	4.00	1.000
		<i>1.181</i>		<i>0.433</i>	<i>0.130</i>	<i>0.709</i>	<i>0.157</i>	<i>0.039</i>

Indicates item not stocked at time of printing - Please enquire for lead time

Page 19 of 39

E&OE Pricing and all details subject to change without notice - Copyright Miniature Bearings Australia Pty Ltd

MBA Size Listings are a guide to sizes only and must not be solely relied on for critical design information.

Screws - Countersunk - Socket - 304 Stainless

Part Number	Thread Size (C)	Length (L) mm	Material	Head Diameter (A) mm	Max Head Height mm	Approx Thread Length (l) mm	Hex Key (s) mm	Pitch mm
		<i>inches</i>		<i>inches</i>	<i>inches</i>	<i>inches</i>	<i>inches</i>	<i>inches</i>
# SK060M-035-SK-S4	M6x1 (6mm Standard)	35 <i>1.378</i>	304 Stainless	11.0 <i>0.433</i>	3.3 <i>0.130</i>	18 <i>0.709</i>	4.00 <i>0.157</i>	1.000 <i>0.039</i>
SK060M-040-SK-S4	M6x1 (6mm Standard)	40 <i>1.575</i>	304 Stainless	11.0 <i>0.433</i>	3.3 <i>0.130</i>	18 <i>0.709</i>	4.00 <i>0.157</i>	1.000 <i>0.039</i>
SK060M-045-SK-S4	M6x1 (6mm Standard)	45 <i>1.772</i>	304 Stainless	11.0 <i>0.433</i>	3.3 <i>0.130</i>	18 <i>0.709</i>	4.00 <i>0.157</i>	1.000 <i>0.039</i>
SK060M-050-SK-S4	M6x1 (6mm Standard)	50 <i>1.969</i>	304 Stainless	11.0 <i>0.433</i>	3.3 <i>0.130</i>	18 <i>0.709</i>	4.00 <i>0.157</i>	1.000 <i>0.039</i>
# SK060M-055-SK-S4	M6x1 (6mm Standard)	55 <i>2.165</i>	304 Stainless	11.0 <i>0.433</i>	3.3 <i>0.130</i>	18 <i>0.709</i>	4.00 <i>0.157</i>	1.000 <i>0.039</i>
SK060M-060-SK-S4	M6x1 (6mm Standard)	60 <i>2.362</i>	304 Stainless	11.0 <i>0.433</i>	3.3 <i>0.130</i>	18 <i>0.709</i>	4.00 <i>0.157</i>	1.000 <i>0.039</i>
SK060M-070-SK-S4	M6x1 (6mm Standard)	70 <i>2.756</i>	304 Stainless	11.0 <i>0.433</i>	3.3 <i>0.130</i>	18 <i>0.709</i>	4.00 <i>0.157</i>	1.000 <i>0.039</i>
# SK060M-080-SK-S4	M6x1 (6mm Standard)	80 <i>3.150</i>	304 Stainless	11.0 <i>0.433</i>	3.3 <i>0.130</i>	18 <i>0.709</i>	4.00 <i>0.157</i>	1.000 <i>0.039</i>

Indicates item not stocked at time of printing - Please enquire for lead time

Page 20 of 39

E&OE Pricing and all details subject to change without notice - Copyright Miniature Bearings Australia Pty Ltd

MBA Size Listings are a guide to sizes only and must not be solely relied on for critical design information.

Screws - Countersunk - Socket - 304 Stainless

Part Number	Thread Size (C)	Length (L) mm	Material	Head Diameter (A) mm	Max Head Height mm	Approx Thread Length (l) mm	Hex Key (s) mm	Pitch mm
		<i>inches</i>		<i>inches</i>	<i>inches</i>	<i>inches</i>	<i>inches</i>	<i>inches</i>
# SK060M-090-SK-S4	M6x1 (6mm Standard)	90 <i>3.543</i>	304 Stainless	11.0 <i>0.433</i>	3.3 <i>0.130</i>	18 <i>0.709</i>	4.00 <i>0.157</i>	1.000 <i>0.039</i>
# SK060M-100-SK-S4	M6x1 (6mm Standard)	100 <i>3.937</i>	304 Stainless	11.0 <i>0.433</i>	3.3 <i>0.130</i>	18 <i>0.709</i>	4.00 <i>0.157</i>	1.000 <i>0.039</i>
# SK064C-010-SK-S4	1/4-20 UNC (6.35mm)	9.5 <i>0.374</i>	304 Stainless	13.5 <i>0.531</i>	4.1 <i>0.161</i>	Not Specified	3.97 (5/32)	1.270 <i>0.050</i>
# SK064C-013-SK-S4	1/4-20 UNC (6.35mm)	12.7 <i>0.500</i>	304 Stainless	13.5 <i>0.531</i>	4.1 <i>0.161</i>	Not Specified	3.97 (5/32)	1.270 <i>0.050</i>
SK064C-016-SK-S4	1/4-20 UNC (6.35mm)	15.9 <i>0.626</i>	304 Stainless	13.5 <i>0.531</i>	4.1 <i>0.161</i>	Not Specified	3.97 (5/32)	1.270 <i>0.050</i>
SK064C-019-SK-S4	1/4-20 UNC (6.35mm)	19.1 <i>0.752</i>	304 Stainless	13.5 <i>0.531</i>	4.1 <i>0.161</i>	Not Specified	3.97 (5/32)	1.270 <i>0.050</i>
SK064C-025-SK-S4	1/4-20 UNC (6.35mm)	25.4 <i>1.000</i>	304 Stainless	13.5 <i>0.531</i>	4.1 <i>0.161</i>	Not Specified	3.97 (5/32)	1.270 <i>0.050</i>
# SK064C-032-SK-S4	1/4-20 UNC (6.35mm)	31.8 <i>1.252</i>	304 Stainless	13.5 <i>0.531</i>	4.1 <i>0.161</i>	Not Specified	3.97 (5/32)	1.270 <i>0.050</i>

Indicates item not stocked at time of printing - Please enquire for lead time

Page 21 of 39

E&OE Pricing and all details subject to change without notice - Copyright Miniature Bearings Australia Pty Ltd

MBA Size Listings are a guide to sizes only and must not be solely relied on for critical design information.

Screws - Countersunk - Socket - 304 Stainless

Part Number	Thread Size (C)	Length (L) mm	Material	Head Diameter (A) mm	Max Head Height mm	Approx Thread Length (l) mm	Hex Key (s) mm	Pitch mm
		<i>inches</i>		<i>inches</i>	<i>inches</i>	<i>inches</i>	<i>inches</i>	<i>inches</i>
# SK064C-038-SK-S4	1/4-20 UNC (6.35mm)	38.1 <i>1.500</i>	304 Stainless	13.5 <i>0.531</i>	4.1 <i>0.161</i>	Not Specified	3.97 (5/32)	1.270 <i>0.050</i>
SK064C-051-SK-S4	1/4-20 UNC (6.35mm)	50.8 <i>2.000</i>	304 Stainless	13.5 <i>0.531</i>	4.1 <i>0.161</i>	Not Specified	3.97 (5/32)	1.270 <i>0.050</i>
SK064C-064-SK-S4	1/4-20 UNC (6.35mm)	63.5 <i>2.500</i>	304 Stainless	13.5 <i>0.531</i>	4.1 <i>0.161</i>	Not Specified	3.97 (5/32)	1.270 <i>0.050</i>
SK064C-076-SK-S4	1/4-20 UNC (6.35mm)	76.2 <i>3.000</i>	304 Stainless	13.5 <i>0.531</i>	4.1 <i>0.161</i>	Not Specified	3.97 (5/32)	1.270 <i>0.050</i>
# SK064F-013-SK-S4	1/4-28 UNF (6.35mm)	12.7 <i>0.500</i>	304 Stainless	13.5 <i>0.531</i>	4.1 <i>0.161</i>	Not Specified	3.97 (5/32)	0.907 <i>0.036</i>
# SK064F-016-SK-S4	1/4-28 UNF (6.35mm)	15.9 <i>0.626</i>	304 Stainless	13.5 <i>0.531</i>	4.1 <i>0.161</i>	Not Specified	3.97 (5/32)	0.907 <i>0.036</i>
SK064F-019-SK-S4	1/4-28 UNF (6.35mm)	19.1 <i>0.752</i>	304 Stainless	13.5 <i>0.531</i>	4.1 <i>0.161</i>	Not Specified	3.97 (5/32)	0.907 <i>0.036</i>
# SK064F-025-SK-S4	1/4-28 UNF (6.35mm)	25.4 <i>1.000</i>	304 Stainless	13.5 <i>0.531</i>	4.1 <i>0.161</i>	Not Specified	3.97 (5/32)	0.907 <i>0.036</i>

Indicates item not stocked at time of printing - Please enquire for lead time

Page 22 of 39

E&OE Pricing and all details subject to change without notice - Copyright Miniature Bearings Australia Pty Ltd

MBA Size Listings are a guide to sizes only and must not be solely relied on for critical design information.

Screws - Countersunk - Socket - 304 Stainless

Part Number	Thread Size (C)	Length (L) mm	Material	Head Diameter (A) mm	Max Head Height mm	Approx Thread Length (l) mm	Hex Key (s) mm	Pitch mm
		<i>inches</i>		<i>inches</i>	<i>inches</i>	<i>inches</i>	<i>inches</i>	<i>inches</i>
# SK064F-032-SK-S4	1/4-28 UNF (6.35mm)	31.8	304 Stainless	13.5	4.1	Not Specified	3.97 (5/32)	0.907
		<i>1.252</i>		<i>0.531</i>	<i>0.161</i>			<i>0.036</i>
# SK064F-038-SK-S4	1/4-28 UNF (6.35mm)	38.1	304 Stainless	13.5	4.1	Not Specified	3.97 (5/32)	0.907
		<i>1.500</i>		<i>0.531</i>	<i>0.161</i>			<i>0.036</i>
# SK064F-051-SK-S4	1/4-28 UNF (6.35mm)	50.8	304 Stainless	13.5	4.1	Not Specified	3.97 (5/32)	0.907
		<i>2.000</i>		<i>0.531</i>	<i>0.161</i>			<i>0.036</i>
# SK079C-013-SK-S4	5/16-18 UNC (7.938mm)	12.7	304 Stainless	16.7	5.0	Not Specified	4.76 (3/16)	1.411
		<i>0.500</i>		<i>0.657</i>	<i>0.197</i>			<i>0.056</i>
# SK079C-016-SK-S4	5/16-18 UNC (7.938mm)	15.9	304 Stainless	16.7	5.0	Not Specified	4.76 (3/16)	1.411
		<i>0.626</i>		<i>0.657</i>	<i>0.197</i>			<i>0.056</i>
# SK079C-019-SK-S4	5/16-18 UNC (7.938mm)	19.1	304 Stainless	16.7	5.0	Not Specified	4.76 (3/16)	1.411
		<i>0.752</i>		<i>0.657</i>	<i>0.197</i>			<i>0.056</i>
SK079C-025-SK-S4	5/16-18 UNC (7.938mm)	25.4	304 Stainless	16.7	5.0	Not Specified	4.76 (3/16)	1.411
		<i>1.000</i>		<i>0.657</i>	<i>0.197</i>			<i>0.056</i>
# SK079C-032-SK-S4	5/16-18 UNC (7.938mm)	31.8	304 Stainless	16.7	5.0	Not Specified	4.76 (3/16)	1.411
		<i>1.252</i>		<i>0.657</i>	<i>0.197</i>			<i>0.056</i>

Indicates item not stocked at time of printing - Please enquire for lead time

Page 23 of 39

E&OE Pricing and all details subject to change without notice - Copyright Miniature Bearings Australia Pty Ltd

MBA Size Listings are a guide to sizes only and must not be solely relied on for critical design information.

Screws - Countersunk - Socket - 304 Stainless

Part Number	Thread Size (C)	Length (L) mm	Material	Head Diameter (A) mm	Max Head Height mm	Approx Thread Length (I) mm	Hex Key (s) mm	Pitch mm
		<i>inches</i>		<i>inches</i>	<i>inches</i>	<i>inches</i>	<i>inches</i>	<i>inches</i>
# SK079C-038-SK-S4	5/16-18 UNC (7.938mm)	38.1 <i>1.500</i>	304 Stainless	16.7 <i>0.657</i>	5.0 <i>0.197</i>	Not Specified	4.76 (3/16)	1.411 <i>0.056</i>
# SK079C-045-SK-S4	5/16-18 UNC (7.938mm)	44.5 <i>1.752</i>	304 Stainless	16.7 <i>0.657</i>	5.0 <i>0.197</i>	Not Specified	4.76 (3/16)	1.411 <i>0.056</i>
# SK079C-051-SK-S4	5/16-18 UNC (7.938mm)	50.8 <i>2.000</i>	304 Stainless	16.7 <i>0.657</i>	5.0 <i>0.197</i>	Not Specified	4.76 (3/16)	1.411 <i>0.056</i>
# SK079C-064-SK-S4	5/16-18 UNC (7.938mm)	63.5 <i>2.500</i>	304 Stainless	16.7 <i>0.657</i>	5.0 <i>0.197</i>	Not Specified	4.76 (3/16)	1.411 <i>0.056</i>
# SK079C-076-SK-S4	5/16-18 UNC (7.938mm)	76.2 <i>3.000</i>	304 Stainless	16.7 <i>0.657</i>	5.0 <i>0.197</i>	Not Specified	4.76 (3/16)	1.411 <i>0.056</i>
# SK079F-019-SK-S4	5/16-24 UNF (7.938mm)	19.1 <i>0.752</i>	304 Stainless	16.7 <i>0.657</i>	5.0 <i>0.197</i>	Not Specified	4.76 (3/16)	1.058 <i>0.042</i>
SK079F-025-SK-S4	5/16-24 UNF (7.938mm)	25.4 <i>1.000</i>	304 Stainless	16.7 <i>0.657</i>	5.0 <i>0.197</i>	Not Specified	4.76 (3/16)	1.058 <i>0.042</i>
# SK079F-032-SK-S4	5/16-24 UNF (7.938mm)	31.8 <i>1.252</i>	304 Stainless	16.7 <i>0.657</i>	5.0 <i>0.197</i>	Not Specified	4.76 (3/16)	1.058 <i>0.042</i>

Indicates item not stocked at time of printing - Please enquire for lead time

Page 24 of 39

E&OE Pricing and all details subject to change without notice - Copyright Miniature Bearings Australia Pty Ltd

MBA Size Listings are a guide to sizes only and must not be solely relied on for critical design information.

Screws - Countersunk - Socket - 304 Stainless

Part Number	Thread Size (C)	Length (L) mm	Material	Head Diameter (A) mm	Max Head Height mm	Approx Thread Length (l) mm	Hex Key (s) mm	Pitch mm
		<i>inches</i>		<i>inches</i>	<i>inches</i>	<i>inches</i>	<i>inches</i>	<i>inches</i>
# SK079F-038-SK-S4	5/16-24 UNF (7.938mm)	38.1 <i>1.500</i>	304 Stainless	16.7 <i>0.657</i>	5.0 <i>0.197</i>	Not Specified	4.76 (3/16)	1.058 <i>0.042</i>
# SK079F-051-SK-S4	5/16-24 UNF (7.938mm)	50.8 <i>2.000</i>	304 Stainless	16.7 <i>0.657</i>	5.0 <i>0.197</i>	Not Specified	4.76 (3/16)	1.058 <i>0.042</i>
SK080M-012-SK-S4	M8x1.25 (8mm Standard)	12 <i>0.472</i>	304 Stainless	14.5 <i>0.571</i>	4.4 <i>0.173</i>	22 <i>0.866</i>	5.00 <i>0.197</i>	1.250 <i>0.049</i>
# SK080M-016-SK-S4	M8x1.25 (8mm Standard)	16 <i>0.630</i>	304 Stainless	14.5 <i>0.571</i>	4.4 <i>0.173</i>	22 <i>0.866</i>	5.00 <i>0.197</i>	1.250 <i>0.049</i>
# SK080M-018-SK-S4	M8x1.25 (8mm Standard)	18 <i>0.709</i>	304 Stainless	14.5 <i>0.571</i>	4.4 <i>0.173</i>	22 <i>0.866</i>	5.00 <i>0.197</i>	1.250 <i>0.049</i>
# SK080M-020-SK-S4	M8x1.25 (8mm Standard)	20 <i>0.787</i>	304 Stainless	14.5 <i>0.571</i>	4.4 <i>0.173</i>	22 <i>0.866</i>	5.00 <i>0.197</i>	1.250 <i>0.049</i>
SK080M-025-SK-S4	M8x1.25 (8mm Standard)	25 <i>0.984</i>	304 Stainless	14.5 <i>0.571</i>	4.4 <i>0.173</i>	22 <i>0.866</i>	5.00 <i>0.197</i>	1.250 <i>0.049</i>
SK080M-030-SK-S4	M8x1.25 (8mm Standard)	30 <i>1.181</i>	304 Stainless	14.5 <i>0.571</i>	4.4 <i>0.173</i>	22 <i>0.866</i>	5.00 <i>0.197</i>	1.250 <i>0.049</i>

Indicates item not stocked at time of printing - Please enquire for lead time

Page 25 of 39

E&OE Pricing and all details subject to change without notice - Copyright Miniature Bearings Australia Pty Ltd

MBA Size Listings are a guide to sizes only and must not be solely relied on for critical design information.

Screws - Countersunk - Socket - 304 Stainless

Part Number	Thread Size (C)	Length (L) mm	Material	Head Diameter (A) mm	Max Head Height mm	Approx Thread Length (I) mm	Hex Key (s) mm	Pitch mm
		<i>inches</i>		<i>inches</i>	<i>inches</i>	<i>inches</i>	<i>inches</i>	<i>inches</i>
SK080M-035-SK-S4	M8x1.25 (8mm Standard)	35	304 Stainless	14.5	4.4	22	5.00	1.250
		<i>1.378</i>		<i>0.571</i>	<i>0.173</i>	<i>0.866</i>	<i>0.197</i>	<i>0.049</i>
SK080M-040-SK-S4	M8x1.25 (8mm Standard)	40	304 Stainless	14.5	4.4	22	5.00	1.250
		<i>1.575</i>		<i>0.571</i>	<i>0.173</i>	<i>0.866</i>	<i>0.197</i>	<i>0.049</i>
SK080M-045-SK-S4	M8x1.25 (8mm Standard)	45	304 Stainless	14.5	4.4	22	5.00	1.250
		<i>1.772</i>		<i>0.571</i>	<i>0.173</i>	<i>0.866</i>	<i>0.197</i>	<i>0.049</i>
SK080M-050-SK-S4	M8x1.25 (8mm Standard)	50	304 Stainless	14.5	4.4	22	5.00	1.250
		<i>1.969</i>		<i>0.571</i>	<i>0.173</i>	<i>0.866</i>	<i>0.197</i>	<i>0.049</i>
# SK080M-055-SK-S4	M8x1.25 (8mm Standard)	55	304 Stainless	14.5	4.4	22	5.00	1.250
		<i>2.165</i>		<i>0.571</i>	<i>0.173</i>	<i>0.866</i>	<i>0.197</i>	<i>0.049</i>
SK080M-060-SK-S4	M8x1.25 (8mm Standard)	60	304 Stainless	14.5	4.4	22	5.00	1.250
		<i>2.362</i>		<i>0.571</i>	<i>0.173</i>	<i>0.866</i>	<i>0.197</i>	<i>0.049</i>
SK080M-070-SK-S4	M8x1.25 (8mm Standard)	70	304 Stainless	14.5	4.4	22	5.00	1.250
		<i>2.756</i>		<i>0.571</i>	<i>0.173</i>	<i>0.866</i>	<i>0.197</i>	<i>0.049</i>
# SK080M-075-SK-S4	M8x1.25 (8mm Standard)	75	304 Stainless	14.5	4.4	22	5.00	1.250
		<i>2.953</i>		<i>0.571</i>	<i>0.173</i>	<i>0.866</i>	<i>0.197</i>	<i>0.049</i>

Indicates item not stocked at time of printing - Please enquire for lead time

Page 26 of 39

E&OE Pricing and all details subject to change without notice - Copyright Miniature Bearings Australia Pty Ltd

MBA Size Listings are a guide to sizes only and must not be solely relied on for critical design information.

Screws - Countersunk - Socket - 304 Stainless

Part Number	Thread Size (C)	Length (L) mm	Material	Head Diameter (A) mm	Max Head Height mm	Approx Thread Length (l) mm	Hex Key (s) mm	Pitch mm
		<i>inches</i>		<i>inches</i>	<i>inches</i>	<i>inches</i>	<i>inches</i>	<i>inches</i>
# SK080M-080-SK-S4	M8x1.25 (8mm Standard)	80	304 Stainless	14.5	4.4	22	5.00	1.250
		<i>3.150</i>		<i>0.571</i>	<i>0.173</i>	<i>0.866</i>	<i>0.197</i>	<i>0.049</i>
# SK080M-090-SK-S4	M8x1.25 (8mm Standard)	90	304 Stainless	14.5	4.4	22	5.00	1.250
		<i>3.543</i>		<i>0.571</i>	<i>0.173</i>	<i>0.866</i>	<i>0.197</i>	<i>0.049</i>
# SK080M-100-SK-S4	M8x1.25 (8mm Standard)	100	304 Stainless	14.5	4.4	22	5.00	1.250
		<i>3.937</i>		<i>0.571</i>	<i>0.173</i>	<i>0.866</i>	<i>0.197</i>	<i>0.049</i>
# SK080M-120-SK-S4	M8x1.25 (8mm Standard)	120	304 Stainless	14.5	4.4	22	5.00	1.250
		<i>4.724</i>		<i>0.571</i>	<i>0.173</i>	<i>0.866</i>	<i>0.197</i>	<i>0.049</i>
# SK095C-013-SK-S4	3/8-16 UNC (9.525mm)	12.7	304 Stainless	19.8	5.9	Not Specified	5.56 (7/32)	1.588
		<i>0.500</i>		<i>0.780</i>	<i>0.232</i>			<i>0.063</i>
# SK095C-019-SK-S4	3/8-16 UNC (9.525mm)	19.1	304 Stainless	19.8	5.9	Not Specified	5.56 (7/32)	1.588
		<i>0.752</i>		<i>0.780</i>	<i>0.232</i>			<i>0.063</i>
SK095C-025-SK-S4	3/8-16 UNC (9.525mm)	25.4	304 Stainless	19.8	5.9	Not Specified	5.56 (7/32)	1.588
		<i>1.000</i>		<i>0.780</i>	<i>0.232</i>			<i>0.063</i>
# SK095C-032-SK-S4	3/8-16 UNC (9.525mm)	31.8	304 Stainless	19.8	5.9	Not Specified	5.56 (7/32)	1.588
		<i>1.252</i>		<i>0.780</i>	<i>0.232</i>			<i>0.063</i>

Indicates item not stocked at time of printing - Please enquire for lead time

Page 27 of 39

E&OE Pricing and all details subject to change without notice - Copyright Miniature Bearings Australia Pty Ltd

MBA Size Listings are a guide to sizes only and must not be solely relied on for critical design information.

Screws - Countersunk - Socket - 304 Stainless

Part Number	Thread Size (C)	Length (L) mm	Material	Head Diameter (A) mm	Max Head Height mm	Approx Thread Length (I) mm	Hex Key (s) mm	Pitch mm
		<i>inches</i>		<i>inches</i>	<i>inches</i>	<i>inches</i>	<i>inches</i>	<i>inches</i>
# SK095C-038-SK-S4	3/8-16 UNC (9.525mm)	38.1 <i>1.500</i>	304 Stainless	19.8 <i>0.780</i>	5.9 <i>0.232</i>	Not Specified	5.56 (7/32)	1.588 <i>0.063</i>
# SK095C-045-SK-S4	3/8-16 UNC (9.525mm)	44.5 <i>1.752</i>	304 Stainless	19.8 <i>0.780</i>	5.9 <i>0.232</i>	Not Specified	5.56 (7/32)	1.588 <i>0.063</i>
# SK095C-051-SK-S4	3/8-16 UNC (9.525mm)	50.8 <i>2.000</i>	304 Stainless	19.8 <i>0.780</i>	5.9 <i>0.232</i>	Not Specified	5.56 (7/32)	1.588 <i>0.063</i>
# SK095C-064-SK-S4	3/8-16 UNC (9.525mm)	63.5 <i>2.500</i>	304 Stainless	19.8 <i>0.780</i>	5.9 <i>0.232</i>	Not Specified	5.56 (7/32)	1.588 <i>0.063</i>
# SK095C-076-SK-S4	3/8-16 UNC (9.525mm)	76.2 <i>3.000</i>	304 Stainless	19.8 <i>0.780</i>	5.9 <i>0.232</i>	Not Specified	5.56 (7/32)	1.588 <i>0.063</i>
# SK095F-019-SK-S4	3/8-24 UNF (9.525mm)	19.1 <i>0.752</i>	304 Stainless	19.8 <i>0.780</i>	5.9 <i>0.232</i>	Not Specified	5.56 (7/32)	1.058 <i>0.042</i>
# SK095F-025-SK-S4	3/8-24 UNF (9.525mm)	25.4 <i>1.000</i>	304 Stainless	19.8 <i>0.780</i>	5.9 <i>0.232</i>	Not Specified	5.56 (7/32)	1.058 <i>0.042</i>
# SK095F-032-SK-S4	3/8-24 UNF (9.525mm)	31.8 <i>1.252</i>	304 Stainless	19.8 <i>0.780</i>	5.9 <i>0.232</i>	Not Specified	5.56 (7/32)	1.058 <i>0.042</i>

Indicates item not stocked at time of printing - Please enquire for lead time

Page 28 of 39

E&OE Pricing and all details subject to change without notice - Copyright Miniature Bearings Australia Pty Ltd

MBA Size Listings are a guide to sizes only and must not be solely relied on for critical design information.

Screws - Countersunk - Socket - 304 Stainless

Part Number	Thread Size (C)	Length (L) mm	Material	Head Diameter (A) mm	Max Head Height mm	Approx Thread Length (l) mm	Hex Key (s) mm	Pitch mm
		<i>inches</i>		<i>inches</i>	<i>inches</i>	<i>inches</i>	<i>inches</i>	<i>inches</i>
# SK095F-038-SK-S4	3/8-24 UNF (9.525mm)	38.1 <i>1.500</i>	304 Stainless	19.8 <i>0.780</i>	5.9 <i>0.232</i>	Not Specified	5.56 (7/32)	1.058 <i>0.042</i>
# SK095F-051-SK-S4	3/8-24 UNF (9.525mm)	50.8 <i>2.000</i>	304 Stainless	19.8 <i>0.780</i>	5.9 <i>0.232</i>	Not Specified	5.56 (7/32)	1.058 <i>0.042</i>
# SK100M-016-SK-S4	M10x1.5 (10mm Standard)	16 <i>0.630</i>	304 Stainless	18.0 <i>0.709</i>	5.5 <i>0.217</i>	26 <i>1.024</i>	6.00 <i>0.236</i>	1.500 <i>0.059</i>
# SK100M-018-SK-S4	M10x1.5 (10mm Standard)	18 <i>0.709</i>	304 Stainless	18.0 <i>0.709</i>	5.5 <i>0.217</i>	26 <i>1.024</i>	6.00 <i>0.236</i>	1.500 <i>0.059</i>
# SK100M-020-SK-S4	M10x1.5 (10mm Standard)	20 <i>0.787</i>	304 Stainless	18.0 <i>0.709</i>	5.5 <i>0.217</i>	26 <i>1.024</i>	6.00 <i>0.236</i>	1.500 <i>0.059</i>
# SK100M-025-SK-S4	M10x1.5 (10mm Standard)	25 <i>0.984</i>	304 Stainless	18.0 <i>0.709</i>	5.5 <i>0.217</i>	26 <i>1.024</i>	6.00 <i>0.236</i>	1.500 <i>0.059</i>
SK100M-030-SK-S4	M10x1.5 (10mm Standard)	30 <i>1.181</i>	304 Stainless	18.0 <i>0.709</i>	5.5 <i>0.217</i>	26 <i>1.024</i>	6.00 <i>0.236</i>	1.500 <i>0.059</i>
SK100M-035-SK-S4	M10x1.5 (10mm Standard)	35 <i>1.378</i>	304 Stainless	18.0 <i>0.709</i>	5.5 <i>0.217</i>	26 <i>1.024</i>	6.00 <i>0.236</i>	1.500 <i>0.059</i>

Indicates item not stocked at time of printing - Please enquire for lead time

Page 29 of 39

E&OE Pricing and all details subject to change without notice - Copyright Miniature Bearings Australia Pty Ltd

MBA Size Listings are a guide to sizes only and must not be solely relied on for critical design information.

Screws - Countersunk - Socket - 304 Stainless

Part Number	Thread Size (C)	Length (L) mm	Material	Head Diameter (A) mm	Max Head Height mm	Approx Thread Length (l) mm	Hex Key (s) mm	Pitch mm
		<i>inches</i>		<i>inches</i>	<i>inches</i>	<i>inches</i>	<i>inches</i>	<i>inches</i>
# SK100M-040-SK-S4	M10x1.5 (10mm Standard)	40 <i>1.575</i>	304 Stainless	18.0 <i>0.709</i>	5.5 <i>0.217</i>	26 <i>1.024</i>	6.00 <i>0.236</i>	1.500 <i>0.059</i>
# SK100M-045-SK-S4	M10x1.5 (10mm Standard)	45 <i>1.772</i>	304 Stainless	18.0 <i>0.709</i>	5.5 <i>0.217</i>	26 <i>1.024</i>	6.00 <i>0.236</i>	1.500 <i>0.059</i>
# SK100M-050-SK-S4	M10x1.5 (10mm Standard)	50 <i>1.969</i>	304 Stainless	18.0 <i>0.709</i>	5.5 <i>0.217</i>	26 <i>1.024</i>	6.00 <i>0.236</i>	1.500 <i>0.059</i>
# SK100M-055-SK-S4	M10x1.5 (10mm Standard)	55 <i>2.165</i>	304 Stainless	18.0 <i>0.709</i>	5.5 <i>0.217</i>	26 <i>1.024</i>	6.00 <i>0.236</i>	1.500 <i>0.059</i>
# SK100M-060-SK-S4	M10x1.5 (10mm Standard)	60 <i>2.362</i>	304 Stainless	18.0 <i>0.709</i>	5.5 <i>0.217</i>	26 <i>1.024</i>	6.00 <i>0.236</i>	1.500 <i>0.059</i>
# SK100M-070-SK-S4	M10x1.5 (10mm Standard)	70 <i>2.756</i>	304 Stainless	18.0 <i>0.709</i>	5.5 <i>0.217</i>	26 <i>1.024</i>	6.00 <i>0.236</i>	1.500 <i>0.059</i>
# SK100M-080-SK-S4	M10x1.5 (10mm Standard)	80 <i>3.150</i>	304 Stainless	18.0 <i>0.709</i>	5.5 <i>0.217</i>	26 <i>1.024</i>	6.00 <i>0.236</i>	1.500 <i>0.059</i>
# SK100M-090-SK-S4	M10x1.5 (10mm Standard)	90 <i>3.543</i>	304 Stainless	18.0 <i>0.709</i>	5.5 <i>0.217</i>	26 <i>1.024</i>	6.00 <i>0.236</i>	1.500 <i>0.059</i>

Indicates item not stocked at time of printing - Please enquire for lead time

Page 30 of 39

E&OE Pricing and all details subject to change without notice - Copyright Miniature Bearings Australia Pty Ltd

MBA Size Listings are a guide to sizes only and must not be solely relied on for critical design information.

Screws - Countersunk - Socket - 304 Stainless

Part Number	Thread Size (C)	Length (L) mm	Material	Head Diameter (A) mm	Max Head Height mm	Approx Thread Length (I) mm	Hex Key (s) mm	Pitch mm
		<i>inches</i>		<i>inches</i>	<i>inches</i>	<i>inches</i>	<i>inches</i>	<i>inches</i>
# SK100M-100-SK-S4	M10x1.5 (10mm Standard)	100	304 Stainless	18.0	5.5	26	6.00	1.500
		<i>3.937</i>		<i>0.709</i>	<i>0.217</i>	<i>1.024</i>	<i>0.236</i>	<i>0.059</i>
# SK100M-120-SK-S4	M10x1.5 (10mm Standard)	120	304 Stainless	18.0	5.5	26	6.00	1.500
		<i>4.724</i>		<i>0.709</i>	<i>0.217</i>	<i>1.024</i>	<i>0.236</i>	<i>0.059</i>
# SK100M-130-SK-S4	M10x1.5 (10mm Standard)	130	304 Stainless	18.0	5.5	32	6.00	1.500
		<i>5.118</i>		<i>0.709</i>	<i>0.217</i>	<i>1.260</i>	<i>0.236</i>	<i>0.059</i>
# SK100M-150-SK-S4	M10x1.5 (10mm Standard)	150	304 Stainless	18.0	5.5	32	6.00	1.500
		<i>5.906</i>		<i>0.709</i>	<i>0.217</i>	<i>1.260</i>	<i>0.236</i>	<i>0.059</i>
# SK120M-020-SK-S4	M12x1.75 (12mm Standard)	20	304 Stainless	22.0	6.5	30	8.00	1.750
		<i>0.787</i>		<i>0.866</i>	<i>0.256</i>	<i>1.181</i>	<i>0.315</i>	<i>0.069</i>
# SK120M-025-SK-S4	M12x1.75 (12mm Standard)	25	304 Stainless	22.0	6.5	30	8.00	1.750
		<i>0.984</i>		<i>0.866</i>	<i>0.256</i>	<i>1.181</i>	<i>0.315</i>	<i>0.069</i>
# SK120M-030-SK-S4	M12x1.75 (12mm Standard)	30	304 Stainless	22.0	6.5	30	8.00	1.750
		<i>1.181</i>		<i>0.866</i>	<i>0.256</i>	<i>1.181</i>	<i>0.315</i>	<i>0.069</i>
# SK120M-035-SK-S4	M12x1.75 (12mm Standard)	35	304 Stainless	22.0	6.5	30	8.00	1.750
		<i>1.378</i>		<i>0.866</i>	<i>0.256</i>	<i>1.181</i>	<i>0.315</i>	<i>0.069</i>

Indicates item not stocked at time of printing - Please enquire for lead time

Page 31 of 39

E&OE Pricing and all details subject to change without notice - Copyright Miniature Bearings Australia Pty Ltd

MBA Size Listings are a guide to sizes only and must not be solely relied on for critical design information.

Screws - Countersunk - Socket - 304 Stainless

Part Number	Thread Size (C)	Length (L) mm	Material	Head Diameter (A) mm	Max Head Height mm	Approx Thread Length (I) mm	Hex Key (s) mm	Pitch mm
		<i>inches</i>		<i>inches</i>	<i>inches</i>	<i>inches</i>	<i>inches</i>	<i>inches</i>
# SK120M-040-SK-S4	M12x1.75 (12mm Standard)	40 <i>1.575</i>	304 Stainless	22.0 <i>0.866</i>	6.5 <i>0.256</i>	30 <i>1.181</i>	8.00 <i>0.315</i>	1.750 <i>0.069</i>
# SK120M-045-SK-S4	M12x1.75 (12mm Standard)	45 <i>1.772</i>	304 Stainless	22.0 <i>0.866</i>	6.5 <i>0.256</i>	30 <i>1.181</i>	8.00 <i>0.315</i>	1.750 <i>0.069</i>
# SK120M-050-SK-S4	M12x1.75 (12mm Standard)	50 <i>1.969</i>	304 Stainless	22.0 <i>0.866</i>	6.5 <i>0.256</i>	30 <i>1.181</i>	8.00 <i>0.315</i>	1.750 <i>0.069</i>
# SK120M-055-SK-S4	M12x1.75 (12mm Standard)	55 <i>2.165</i>	304 Stainless	22.0 <i>0.866</i>	6.5 <i>0.256</i>	30 <i>1.181</i>	8.00 <i>0.315</i>	1.750 <i>0.069</i>
# SK120M-060-SK-S4	M12x1.75 (12mm Standard)	60 <i>2.362</i>	304 Stainless	22.0 <i>0.866</i>	6.5 <i>0.256</i>	30 <i>1.181</i>	8.00 <i>0.315</i>	1.750 <i>0.069</i>
# SK120M-065-SK-S4	M12x1.75 (12mm Standard)	65 <i>2.559</i>	304 Stainless	22.0 <i>0.866</i>	6.5 <i>0.256</i>	30 <i>1.181</i>	8.00 <i>0.315</i>	1.750 <i>0.069</i>
# SK120M-070-SK-S4	M12x1.75 (12mm Standard)	70 <i>2.756</i>	304 Stainless	22.0 <i>0.866</i>	6.5 <i>0.256</i>	30 <i>1.181</i>	8.00 <i>0.315</i>	1.750 <i>0.069</i>
# SK120M-080-SK-S4	M12x1.75 (12mm Standard)	80 <i>3.150</i>	304 Stainless	22.0 <i>0.866</i>	6.5 <i>0.256</i>	30 <i>1.181</i>	8.00 <i>0.315</i>	1.750 <i>0.069</i>

Indicates item not stocked at time of printing - Please enquire for lead time

Page 32 of 39

E&OE Pricing and all details subject to change without notice - Copyright Miniature Bearings Australia Pty Ltd

MBA Size Listings are a guide to sizes only and must not be solely relied on for critical design information.

Screws - Countersunk - Socket - 304 Stainless

Part Number	Thread Size (C)	Length (L) mm	Material	Head Diameter (A) mm	Max Head Height mm	Approx Thread Length (l) mm	Hex Key (s) mm	Pitch mm
		<i>inches</i>		<i>inches</i>	<i>inches</i>	<i>inches</i>	<i>inches</i>	<i>inches</i>
# SK120M-090-SK-S4	M12x1.75 (12mm Standard)	90 <i>3.543</i>	304 Stainless	22.0 <i>0.866</i>	6.5 <i>0.256</i>	30 <i>1.181</i>	8.00 <i>0.315</i>	1.750 <i>0.069</i>
# SK120M-100-SK-S4	M12x1.75 (12mm Standard)	100 <i>3.937</i>	304 Stainless	22.0 <i>0.866</i>	6.5 <i>0.256</i>	30 <i>1.181</i>	8.00 <i>0.315</i>	1.750 <i>0.069</i>
# SK120M-120-SK-S4	M12x1.75 (12mm Standard)	120 <i>4.724</i>	304 Stainless	22.0 <i>0.866</i>	6.5 <i>0.256</i>	30 <i>1.181</i>	8.00 <i>0.315</i>	1.750 <i>0.069</i>
# SK120M-130-SK-S4	M12x1.75 (12mm Standard)	130 <i>5.118</i>	304 Stainless	22.0 <i>0.866</i>	6.5 <i>0.256</i>	36 <i>1.417</i>	8.00 <i>0.315</i>	1.750 <i>0.069</i>
# SK120M-150-SK-S4	M12x1.75 (12mm Standard)	150 <i>5.906</i>	304 Stainless	22.0 <i>0.866</i>	6.5 <i>0.256</i>	36 <i>1.417</i>	8.00 <i>0.315</i>	1.750 <i>0.069</i>
# SK127C-019-SK-S4	1/2-13 UNC (12.7mm)	19.1 <i>0.752</i>	304 Stainless	23.8 <i>0.937</i>	6.4 <i>0.252</i>	Not Specified	7.94 (5/16)	1.954 <i>0.077</i>
# SK127C-025-SK-S4	1/2-13 UNC (12.7mm)	25.4 <i>1.000</i>	304 Stainless	23.8 <i>0.937</i>	6.4 <i>0.252</i>	Not Specified	7.94 (5/16)	1.954 <i>0.077</i>
# SK127C-032-SK-S4	1/2-13 UNC (12.7mm)	31.8 <i>1.252</i>	304 Stainless	23.8 <i>0.937</i>	6.4 <i>0.252</i>	Not Specified	7.94 (5/16)	1.954 <i>0.077</i>

Indicates item not stocked at time of printing - Please enquire for lead time

Page 33 of 39

E&OE Pricing and all details subject to change without notice - Copyright Miniature Bearings Australia Pty Ltd

MBA Size Listings are a guide to sizes only and must not be solely relied on for critical design information.

Screws - Countersunk - Socket - 304 Stainless

Part Number	Thread Size (C)	Length (L) mm	Material	Head Diameter (A) mm	Max Head Height mm	Approx Thread Length (I) mm	Hex Key (s) mm	Pitch mm
		<i>inches</i>		<i>inches</i>	<i>inches</i>	<i>inches</i>	<i>inches</i>	<i>inches</i>
# SK127C-038-SK-S4	1/2-13 UNC (12.7mm)	38.1 <i>1.500</i>	304 Stainless	23.8 <i>0.937</i>	6.4 <i>0.252</i>	Not Specified	7.94 (5/16)	1.954 <i>0.077</i>
# SK127C-045-SK-S4	1/2-13 UNC (12.7mm)	44.5 <i>1.752</i>	304 Stainless	23.8 <i>0.937</i>	6.4 <i>0.252</i>	Not Specified	7.94 (5/16)	1.954 <i>0.077</i>
# SK127C-051-SK-S4	1/2-13 UNC (12.7mm)	50.8 <i>2.000</i>	304 Stainless	23.8 <i>0.937</i>	6.4 <i>0.252</i>	Not Specified	7.94 (5/16)	1.954 <i>0.077</i>
# SK127C-064-SK-S4	1/2-13 UNC (12.7mm)	63.5 <i>2.500</i>	304 Stainless	23.8 <i>0.937</i>	6.4 <i>0.252</i>	Not Specified	7.94 (5/16)	1.954 <i>0.077</i>
# SK127C-076-SK-S4	1/2-13 UNC (12.7mm)	76.2 <i>3.000</i>	304 Stainless	23.8 <i>0.937</i>	6.4 <i>0.252</i>	Not Specified	7.94 (5/16)	1.954 <i>0.077</i>
# SK127C-102-SK-S4	1/2-13 UNC (12.7mm)	101.6 <i>4.000</i>	304 Stainless	23.8 <i>0.937</i>	6.4 <i>0.252</i>	Not Specified	7.94 (5/16)	1.954 <i>0.077</i>
# SK127F-025-SK-S4	1/2-20 UNF (12.7mm)	25.4 <i>1.000</i>	304 Stainless	23.8 <i>0.937</i>	6.4 <i>0.252</i>	Not Specified	7.94 (5/16)	1.270 <i>0.050</i>
# SK127F-032-SK-S4	1/2-20 UNF (12.7mm)	31.8 <i>1.252</i>	304 Stainless	23.8 <i>0.937</i>	6.4 <i>0.252</i>	Not Specified	7.94 (5/16)	1.270 <i>0.050</i>

Indicates item not stocked at time of printing - Please enquire for lead time

Page 34 of 39

E&OE Pricing and all details subject to change without notice - Copyright Miniature Bearings Australia Pty Ltd

MBA Size Listings are a guide to sizes only and must not be solely relied on for critical design information.

Screws - Countersunk - Socket - 304 Stainless

Part Number	Thread Size (C)	Length (L) mm	Material	Head Diameter (A) mm	Max Head Height mm	Approx Thread Length (l) mm	Hex Key (s) mm	Pitch mm
		<i>inches</i>		<i>inches</i>	<i>inches</i>	<i>inches</i>	<i>inches</i>	<i>inches</i>
# SK127F-038-SK-S4	1/2-20 UNF (12.7mm)	38.1 <i>1.500</i>	304 Stainless	23.8 <i>0.937</i>	6.4 <i>0.252</i>	Not Specified	7.94 (5/16)	1.270 <i>0.050</i>
# SK127F-051-SK-S4	1/2-20 UNF (12.7mm)	50.8 <i>2.000</i>	304 Stainless	23.8 <i>0.937</i>	6.4 <i>0.252</i>	Not Specified	7.94 (5/16)	1.270 <i>0.050</i>
# SK159C-025-SK-S4	5/8-11 UNC (15.875mm)	25.4 <i>1.000</i>	304 Stainless	30.2 <i>1.189</i>	8.2 <i>0.323</i>	Not Specified	9.53 (3/8)	2.309 <i>0.091</i>
# SK159C-032-SK-S4	5/8-11 UNC (15.875mm)	31.8 <i>1.252</i>	304 Stainless	30.2 <i>1.189</i>	8.2 <i>0.323</i>	Not Specified	9.53 (3/8)	2.309 <i>0.091</i>
# SK159C-038-SK-S4	5/8-11 UNC (15.875mm)	38.1 <i>1.500</i>	304 Stainless	30.2 <i>1.189</i>	8.2 <i>0.323</i>	Not Specified	9.53 (3/8)	2.309 <i>0.091</i>
# SK159C-051-SK-S4	5/8-11 UNC (15.875mm)	50.8 <i>2.000</i>	304 Stainless	30.2 <i>1.189</i>	8.2 <i>0.323</i>	Not Specified	9.53 (3/8)	2.309 <i>0.091</i>
# SK159C-057-SK-S4	5/8-11 UNC (15.875mm)	57.2 <i>2.252</i>	304 Stainless	30.2 <i>1.189</i>	8.2 <i>0.323</i>	Not Specified	9.53 (3/8)	2.309 <i>0.091</i>
# SK159C-064-SK-S4	5/8-11 UNC (15.875mm)	63.5 <i>2.500</i>	304 Stainless	30.2 <i>1.189</i>	8.2 <i>0.323</i>	Not Specified	9.53 (3/8)	2.309 <i>0.091</i>

Indicates item not stocked at time of printing - Please enquire for lead time

Page 35 of 39

E&OE Pricing and all details subject to change without notice - Copyright Miniature Bearings Australia Pty Ltd

MBA Size Listings are a guide to sizes only and must not be solely relied on for critical design information.

Screws - Countersunk - Socket - 304 Stainless

Part Number	Thread Size (C)	Length (L) mm	Material	Head Diameter (A) mm	Max Head Height mm	Approx Thread Length (l) mm	Hex Key (s) mm	Pitch mm
		<i>inches</i>		<i>inches</i>	<i>inches</i>	<i>inches</i>	<i>inches</i>	<i>inches</i>
# SK159C-076-SK-S4	5/8-11 UNC (15.875mm)	76.2 <i>3.000</i>	304 Stainless	30.2 <i>1.189</i>	8.2 <i>0.323</i>	Not Specified	9.53 (3/8)	2.309 <i>0.091</i>
# SK159C-089-SK-S4	5/8-11 UNC (15.875mm)	88.9 <i>3.500</i>	304 Stainless	30.2 <i>1.189</i>	8.2 <i>0.323</i>	Not Specified	9.53 (3/8)	2.309 <i>0.091</i>
# SK159C-102-SK-S4	5/8-11 UNC (15.875mm)	101.6 <i>4.000</i>	304 Stainless	30.2 <i>1.189</i>	8.2 <i>0.323</i>	Not Specified	9.53 (3/8)	2.309 <i>0.091</i>
# SK160M-025-SK-S4	M16x2 (16mm Standard)	25 <i>0.984</i>	304 Stainless	29.0 <i>1.142</i>	7.5 <i>0.295</i>	38 <i>1.496</i>	10.00 <i>0.394</i>	2.000 <i>0.079</i>
# SK160M-030-SK-S4	M16x2 (16mm Standard)	30 <i>1.181</i>	304 Stainless	29.0 <i>1.142</i>	7.5 <i>0.295</i>	38 <i>1.496</i>	10.00 <i>0.394</i>	2.000 <i>0.079</i>
# SK160M-035-SK-S4	M16x2 (16mm Standard)	35 <i>1.378</i>	304 Stainless	29.0 <i>1.142</i>	7.5 <i>0.295</i>	38 <i>1.496</i>	10.00 <i>0.394</i>	2.000 <i>0.079</i>
# SK160M-040-SK-S4	M16x2 (16mm Standard)	40 <i>1.575</i>	304 Stainless	29.0 <i>1.142</i>	7.5 <i>0.295</i>	38 <i>1.496</i>	10.00 <i>0.394</i>	2.000 <i>0.079</i>
# SK160M-045-SK-S4	M16x2 (16mm Standard)	45 <i>1.772</i>	304 Stainless	29.0 <i>1.142</i>	7.5 <i>0.295</i>	38 <i>1.496</i>	10.00 <i>0.394</i>	2.000 <i>0.079</i>

Indicates item not stocked at time of printing - Please enquire for lead time

Page 36 of 39

E&OE Pricing and all details subject to change without notice - Copyright Miniature Bearings Australia Pty Ltd

MBA Size Listings are a guide to sizes only and must not be solely relied on for critical design information.

Screws - Countersunk - Socket - 304 Stainless

Part Number	Thread Size (C)	Length (L) mm	Material	Head Diameter (A) mm	Max Head Height mm	Approx Thread Length (I) mm	Hex Key (s) mm	Pitch mm
		<i>inches</i>		<i>inches</i>	<i>inches</i>	<i>inches</i>	<i>inches</i>	<i>inches</i>
# SK160M-050-SK-S4	M16x2 (16mm Standard)	50 <i>1.969</i>	304 Stainless	29.0 <i>1.142</i>	7.5 <i>0.295</i>	38 <i>1.496</i>	10.00 <i>0.394</i>	2.000 <i>0.079</i>
# SK160M-055-SK-S4	M16x2 (16mm Standard)	55 <i>2.165</i>	304 Stainless	29.0 <i>1.142</i>	7.5 <i>0.295</i>	38 <i>1.496</i>	10.00 <i>0.394</i>	2.000 <i>0.079</i>
# SK160M-060-SK-S4	M16x2 (16mm Standard)	60 <i>2.362</i>	304 Stainless	29.0 <i>1.142</i>	7.5 <i>0.295</i>	38 <i>1.496</i>	10.00 <i>0.394</i>	2.000 <i>0.079</i>
# SK160M-065-SK-S4	M16x2 (16mm Standard)	65 <i>2.559</i>	304 Stainless	29.0 <i>1.142</i>	7.5 <i>0.295</i>	38 <i>1.496</i>	10.00 <i>0.394</i>	2.000 <i>0.079</i>
# SK160M-070-SK-S4	M16x2 (16mm Standard)	70 <i>2.756</i>	304 Stainless	29.0 <i>1.142</i>	7.5 <i>0.295</i>	38 <i>1.496</i>	10.00 <i>0.394</i>	2.000 <i>0.079</i>
# SK160M-080-SK-S4	M16x2 (16mm Standard)	80 <i>3.150</i>	304 Stainless	29.0 <i>1.142</i>	7.5 <i>0.295</i>	38 <i>1.496</i>	10.00 <i>0.394</i>	2.000 <i>0.079</i>
# SK160M-090-SK-S4	M16x2 (16mm Standard)	90 <i>3.543</i>	304 Stainless	29.0 <i>1.142</i>	7.5 <i>0.295</i>	38 <i>1.496</i>	10.00 <i>0.394</i>	2.000 <i>0.079</i>
# SK160M-100-SK-S4	M16x2 (16mm Standard)	100 <i>3.937</i>	304 Stainless	29.0 <i>1.142</i>	7.5 <i>0.295</i>	38 <i>1.496</i>	10.00 <i>0.394</i>	2.000 <i>0.079</i>

Indicates item not stocked at time of printing - Please enquire for lead time

Page 37 of 39

E&OE Pricing and all details subject to change without notice - Copyright Miniature Bearings Australia Pty Ltd

MBA Size Listings are a guide to sizes only and must not be solely relied on for critical design information.

Screws - Countersunk - Socket - 304 Stainless

Part Number	Thread Size (C)	Length (L) mm	Material	Head Diameter (A) mm	Max Head Height mm	Approx Thread Length (l) mm	Hex Key (s) mm	Pitch mm
		<i>inches</i>		<i>inches</i>	<i>inches</i>	<i>inches</i>	<i>inches</i>	<i>inches</i>
# SK160M-120-SK-S4	M16x2 (16mm Standard)	120	304 Stainless	29.0	7.5	38	10.00	2.000
		<i>4.724</i>		<i>1.142</i>	<i>0.295</i>	<i>1.496</i>	<i>0.394</i>	<i>0.079</i>
# SK160M-150-SK-S4	M16x2 (16mm Standard)	150	304 Stainless	29.0	7.5	44	10.00	2.000
		<i>5.906</i>		<i>1.142</i>	<i>0.295</i>	<i>1.732</i>	<i>0.394</i>	<i>0.079</i>
# SK191C-038-SK-S4	3/4-10 UNC (19.05mm)	38.1	304 Stainless	36.5	10.0	Not Specified	12.7 (1/2)	2.540
		<i>1.500</i>		<i>1.437</i>	<i>0.394</i>			<i>0.100</i>
# SK191C-051-SK-S4	3/4-10 UNC (19.05mm)	50.8	304 Stainless	36.5	10.0	Not Specified	12.7 (1/2)	2.540
		<i>2.000</i>		<i>1.437</i>	<i>0.394</i>			<i>0.100</i>
# SK191C-064-SK-S4	3/4-10 UNC (19.05mm)	63.5	304 Stainless	36.5	10.0	Not Specified	12.7 (1/2)	2.540
		<i>2.500</i>		<i>1.437</i>	<i>0.394</i>			<i>0.100</i>
# SK191C-076-SK-S4	3/4-10 UNC (19.05mm)	76.2	304 Stainless	36.5	10.0	Not Specified	12.7 (1/2)	2.540
		<i>3.000</i>		<i>1.437</i>	<i>0.394</i>			<i>0.100</i>
# SK200M-040-SK-S4	M20x2.5 (20mm Standard)	40	304 Stainless	36.0	8.5	46	12.00	2.500
		<i>1.575</i>		<i>1.417</i>	<i>0.335</i>	<i>1.811</i>	<i>0.472</i>	<i>0.098</i>
# SK200M-050-SK-S4	M20x2.5 (20mm Standard)	50	304 Stainless	36.0	8.5	46	12.00	2.500
		<i>1.969</i>		<i>1.417</i>	<i>0.335</i>	<i>1.811</i>	<i>0.472</i>	<i>0.098</i>

Indicates item not stocked at time of printing - Please enquire for lead time

Page 38 of 39

E&OE Pricing and all details subject to change without notice - Copyright Miniature Bearings Australia Pty Ltd

MBA Size Listings are a guide to sizes only and must not be solely relied on for critical design information.

Screws - Countersunk - Socket - 304 Stainless

Part Number	Thread Size (C)	Length (L) mm	Material	Head Diameter (A) mm	Max Head Height mm	Approx Thread Length (l) mm	Hex Key (s) mm	Pitch mm
		<i>inches</i>		<i>inches</i>	<i>inches</i>	<i>inches</i>	<i>inches</i>	<i>inches</i>
# SK200M-060-SK-S4	M20x2.5 (20mm Standard)	60	304 Stainless	36.0	8.5	46	12.00	2.500
		<i>2.362</i>		<i>1.417</i>	<i>0.335</i>	<i>1.811</i>	<i>0.472</i>	<i>0.098</i>
# SK200M-070-SK-S4	M20x2.5 (20mm Standard)	70	304 Stainless	36.0	8.5	46	12.00	2.500
		<i>2.756</i>		<i>1.417</i>	<i>0.335</i>	<i>1.811</i>	<i>0.472</i>	<i>0.098</i>
# SK200M-080-SK-S4	M20x2.5 (20mm Standard)	80	304 Stainless	36.0	8.5	46	12.00	2.500
		<i>3.150</i>		<i>1.417</i>	<i>0.335</i>	<i>1.811</i>	<i>0.472</i>	<i>0.098</i>
# SK200M-090-SK-S4	M20x2.5 (20mm Standard)	90	304 Stainless	36.0	8.5	46	12.00	2.500
		<i>3.543</i>		<i>1.417</i>	<i>0.335</i>	<i>1.811</i>	<i>0.472</i>	<i>0.098</i>
# SK200M-100-SK-S4	M20x2.5 (20mm Standard)	100	304 Stainless	36.0	8.5	46	12.00	2.500
		<i>3.937</i>		<i>1.417</i>	<i>0.335</i>	<i>1.811</i>	<i>0.472</i>	<i>0.098</i>
# SK200M-120-SK-S4	M20x2.5 (20mm Standard)	120	304 Stainless	36.0	8.5	46	12.00	2.500
		<i>4.724</i>		<i>1.417</i>	<i>0.335</i>	<i>1.811</i>	<i>0.472</i>	<i>0.098</i>
# SK200M-150-SK-S4	M20x2.5 (20mm Standard)	150	304 Stainless	36.0	8.5	52	12.00	2.500
		<i>5.906</i>		<i>1.417</i>	<i>0.335</i>	<i>2.047</i>	<i>0.472</i>	<i>0.098</i>

Indicates item not stocked at time of printing - Please enquire for lead time

Page 39 of 39

E&OE Pricing and all details subject to change without notice - Copyright Miniature Bearings Australia Pty Ltd

MBA Size Listings are a guide to sizes only and must not be solely relied on for critical design information.

DISTRIBUTED BY

Distributed By:

