



Screws - Countersunk - Socket - Steel - Zinc Plated

10/4/2018

Indicates item not stocked at time of printing - Please enquire for lead time

E&OE Pricing and all details subject to change without notice - Copyright Miniature Bearings Australia Pty Ltd

MBA Size Listings are a guide to sizes only and must not be solely relied on for critical design information.

Page 1 of 60

INFORMATION

Flat Head Countersunk UNC - UNF - METRIC

Imperial Sizes to ANSI B18.3.

Metric Sizes to DIN7991.

Rc38-42

ASTM F835 - alloy steel

ISO 10642

This catalogue to be read in conjunction with information at <http://www.minibearings.com.au//partslist/toolssetsfoldup/tools/all/1/>

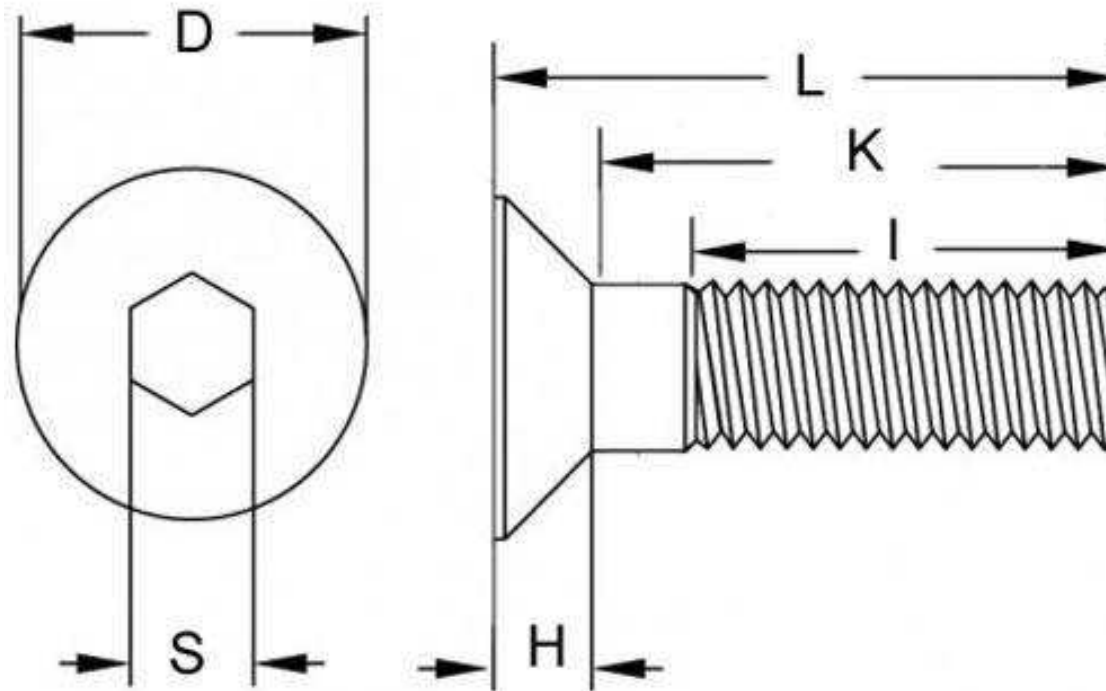
<http://www.minibearings.com.au//partslist/toolskeyshex/tools/all/1/>

<http://www.minibearings.com.au//partslist/toolsscrewdrivers/tools/all/1/>

Indicates item not stocked at time of printing - Please enquire for lead time

E&OE Pricing and all details subject to change without notice - Copyright Miniature Bearings Australia Pty Ltd

MBA Size Listings are a guide to sizes only and must not be solely relied on for critical design information.



Indicates item not stocked at time of printing - Please enquire for lead time

E&OE Pricing and all details subject to change without notice - Copyright Miniature Bearings Australia Pty Ltd

MBA Size Listings are a guide to sizes only and must not be solely relied on for critical design information.

Screws - Countersunk - Socket - Steel - Zinc Plated

Part Number	Thread Size (C)	Length (L) mm	Material	Max Head Diameter mm	Max Head Height mm	Approx Thread Length (l) mm	Hex Key (s) mm	Pitch mm
		<i>inches</i>		<i>inches</i>	<i>inches</i>	<i>inches</i>	<i>inches</i>	<i>inches</i>
# SK030M-005-SK-CZ	M3x0.5 (3mm Standard)	5	Zinc Plated Steel	6.0	1.7	12	2.00	0.500
		<i>0.197</i>		<i>0.236</i>	<i>0.067</i>	<i>0.472</i>	<i>0.079</i>	<i>0.020</i>
# SK030M-006-SK-CZ	M3x0.5 (3mm Standard)	6	Zinc Plated Steel	6.0	1.7	12	2.00	0.500
		<i>0.236</i>		<i>0.236</i>	<i>0.067</i>	<i>0.472</i>	<i>0.079</i>	<i>0.020</i>
SK030M-008-SK-CZ	M3x0.5 (3mm Standard)	8	Zinc Plated Steel	6.0	1.7	12	2.00	0.500
		<i>0.315</i>		<i>0.236</i>	<i>0.067</i>	<i>0.472</i>	<i>0.079</i>	<i>0.020</i>
# SK030M-010-SK-CZ	M3x0.5 (3mm Standard)	10	Zinc Plated Steel	6.0	1.7	12	2.00	0.500
		<i>0.394</i>		<i>0.236</i>	<i>0.067</i>	<i>0.472</i>	<i>0.079</i>	<i>0.020</i>
# SK030M-012-SK-CZ	M3x0.5 (3mm Standard)	12	Zinc Plated Steel	6.0	1.7	12	2.00	0.500
		<i>0.472</i>		<i>0.236</i>	<i>0.067</i>	<i>0.472</i>	<i>0.079</i>	<i>0.020</i>
SK030M-016-SK-CZ	M3x0.5 (3mm Standard)	16	Zinc Plated Steel	6.0	1.7	12	2.00	0.500
		<i>0.630</i>		<i>0.236</i>	<i>0.067</i>	<i>0.472</i>	<i>0.079</i>	<i>0.020</i>
# SK030M-020-SK-CZ	M3x0.5 (3mm Standard)	20	Zinc Plated Steel	6.0	1.7	12	2.00	0.500
		<i>0.787</i>		<i>0.236</i>	<i>0.067</i>	<i>0.472</i>	<i>0.079</i>	<i>0.020</i>
# SK030M-025-SK-CZ	M3x0.5 (3mm Standard)	25	Zinc Plated Steel	6.0	1.7	12	2.00	0.500
		<i>0.984</i>		<i>0.236</i>	<i>0.067</i>	<i>0.472</i>	<i>0.079</i>	<i>0.020</i>

Indicates item not stocked at time of printing - Please enquire for lead time

Page 4 of 60

E&OE Pricing and all details subject to change without notice - Copyright Miniature Bearings Australia Pty Ltd

MBA Size Listings are a guide to sizes only and must not be solely relied on for critical design information.

Screws - Countersunk - Socket - Steel - Zinc Plated

Part Number	Thread Size (C)	Length (L) mm	Material	Max Head Diameter mm	Max Head Height mm	Approx Thread Length (l) mm	Hex Key (s) mm	Pitch mm
		<i>inches</i>		<i>inches</i>	<i>inches</i>	<i>inches</i>	<i>inches</i>	<i>inches</i>
# SK030M-030-SK-CZ	M3x0.5 (3mm Standard)	30	Zinc Plated Steel	6.0	1.7	12	2.00	0.500
		<i>1.181</i>		<i>0.236</i>	<i>0.067</i>	<i>0.472</i>	<i>0.079</i>	<i>0.020</i>
# SK030M-035-SK-CZ	M3x0.5 (3mm Standard)	35	Zinc Plated Steel	6.0	1.7	12	2.00	0.500
		<i>1.378</i>		<i>0.236</i>	<i>0.067</i>	<i>0.472</i>	<i>0.079</i>	<i>0.020</i>
# SK030M-040-SK-CZ	M3x0.5 (3mm Standard)	40	Zinc Plated Steel	6.0	1.7	12	2.00	0.500
		<i>1.575</i>		<i>0.236</i>	<i>0.067</i>	<i>0.472</i>	<i>0.079</i>	<i>0.020</i>
SK030M-045-SK-CZ	M3x0.5 (3mm Standard)	45	Zinc Plated Steel	6.0	1.7	12	2.00	0.500
		<i>1.772</i>		<i>0.236</i>	<i>0.067</i>	<i>0.472</i>	<i>0.079</i>	<i>0.020</i>
# SK030M-050-SK-CZ	M3x0.5 (3mm Standard)	50	Zinc Plated Steel	6.0	1.7	12	2.00	0.500
		<i>1.969</i>		<i>0.236</i>	<i>0.067</i>	<i>0.472</i>	<i>0.079</i>	<i>0.020</i>
# SK040M-006-SK-CZ	M4x0.7 (4mm Standard)	6	Zinc Plated Steel	8.0	2.3	14	2.50	0.700
		<i>0.236</i>		<i>0.315</i>	<i>0.091</i>	<i>0.551</i>	<i>0.098</i>	<i>0.028</i>
SK040M-008-SK-CZ	M4x0.7 (4mm Standard)	8	Zinc Plated Steel	8.0	2.3	14	2.50	0.700
		<i>0.315</i>		<i>0.315</i>	<i>0.091</i>	<i>0.551</i>	<i>0.098</i>	<i>0.028</i>
# SK040M-010-SK-CZ	M4x0.7 (4mm Standard)	10	Zinc Plated Steel	8.0	2.3	14	2.50	0.700
		<i>0.394</i>		<i>0.315</i>	<i>0.091</i>	<i>0.551</i>	<i>0.098</i>	<i>0.028</i>

Indicates item not stocked at time of printing - Please enquire for lead time

Page 5 of 60

E&OE Pricing and all details subject to change without notice - Copyright Miniature Bearings Australia Pty Ltd

MBA Size Listings are a guide to sizes only and must not be solely relied on for critical design information.

Screws - Countersunk - Socket - Steel - Zinc Plated

Part Number	Thread Size (C)	Length (L) mm	Material	Max Head Diameter mm	Max Head Height mm	Approx Thread Length (l) mm	Hex Key (s) mm	Pitch mm
		<i>inches</i>		<i>inches</i>	<i>inches</i>	<i>inches</i>	<i>inches</i>	<i>inches</i>
# SK040M-012-SK-CZ	M4x0.7 (4mm Standard)	12	Zinc Plated Steel	8.0	2.3	14	2.50	0.700
		<i>0.472</i>		<i>0.315</i>	<i>0.091</i>	<i>0.551</i>	<i>0.098</i>	<i>0.028</i>
# SK040M-016-SK-CZ	M4x0.7 (4mm Standard)	16	Zinc Plated Steel	8.0	2.3	14	2.50	0.700
		<i>0.630</i>		<i>0.315</i>	<i>0.091</i>	<i>0.551</i>	<i>0.098</i>	<i>0.028</i>
# SK040M-020-SK-CZ	M4x0.7 (4mm Standard)	20	Zinc Plated Steel	8.0	2.3	14	2.50	0.700
		<i>0.787</i>		<i>0.315</i>	<i>0.091</i>	<i>0.551</i>	<i>0.098</i>	<i>0.028</i>
# SK040M-025-SK-CZ	M4x0.7 (4mm Standard)	25	Zinc Plated Steel	8.0	2.3	14	2.50	0.700
		<i>0.984</i>		<i>0.315</i>	<i>0.091</i>	<i>0.551</i>	<i>0.098</i>	<i>0.028</i>
# SK040M-030-SK-CZ	M4x0.7 (4mm Standard)	30	Zinc Plated Steel	8.0	2.3	14	2.50	0.700
		<i>1.181</i>		<i>0.315</i>	<i>0.091</i>	<i>0.551</i>	<i>0.098</i>	<i>0.028</i>
# SK040M-035-SK-CZ	M4x0.7 (4mm Standard)	35	Zinc Plated Steel	8.0	2.3	14	2.50	0.700
		<i>1.378</i>		<i>0.315</i>	<i>0.091</i>	<i>0.551</i>	<i>0.098</i>	<i>0.028</i>
# SK040M-040-SK-CZ	M4x0.7 (4mm Standard)	40	Zinc Plated Steel	8.0	2.3	14	2.50	0.700
		<i>1.575</i>		<i>0.315</i>	<i>0.091</i>	<i>0.551</i>	<i>0.098</i>	<i>0.028</i>
# SK040M-045-SK-CZ	M4x0.7 (4mm Standard)	45	Zinc Plated Steel	8.0	2.3	14	2.50	0.700
		<i>1.772</i>		<i>0.315</i>	<i>0.091</i>	<i>0.551</i>	<i>0.098</i>	<i>0.028</i>

Indicates item not stocked at time of printing - Please enquire for lead time

Page 6 of 60

E&OE Pricing and all details subject to change without notice - Copyright Miniature Bearings Australia Pty Ltd

MBA Size Listings are a guide to sizes only and must not be solely relied on for critical design information.

Screws - Countersunk - Socket - Steel - Zinc Plated

Part Number	Thread Size (C)	Length (L) mm	Material	Max Head Diameter mm	Max Head Height mm	Approx Thread Length (l) mm	Hex Key (s) mm	Pitch mm
		<i>inches</i>		<i>inches</i>	<i>inches</i>	<i>inches</i>	<i>inches</i>	<i>inches</i>
# SK040M-050-SK-CZ	M4x0.7 (4mm Standard)	50 <i>1.969</i>	Zinc Plated Steel	8.0 <i>0.315</i>	2.3 <i>0.091</i>	14 <i>0.551</i>	2.50 <i>0.098</i>	0.700 <i>0.028</i>
# SK040M-055-SK-CZ	M4x0.7 (4mm Standard)	55 <i>2.165</i>	Zinc Plated Steel	8.0 <i>0.315</i>	2.3 <i>0.091</i>	14 <i>0.551</i>	2.50 <i>0.098</i>	0.700 <i>0.028</i>
# SK040M-060-SK-CZ	M4x0.7 (4mm Standard)	60 <i>2.362</i>	Zinc Plated Steel	8.0 <i>0.315</i>	2.3 <i>0.091</i>	14 <i>0.551</i>	2.50 <i>0.098</i>	0.700 <i>0.028</i>
# SK040M-070-SK-CZ	M4x0.7 (4mm Standard)	70 <i>2.756</i>	Zinc Plated Steel	8.0 <i>0.315</i>	2.3 <i>0.091</i>	14 <i>0.551</i>	2.50 <i>0.098</i>	0.700 <i>0.028</i>
# SK048C-006-SK-CZ	10-24 UNC (4.762mm)	6.4 <i>0.252</i>	Zinc Plated Steel	10.4 <i>0.409</i>	3.2 <i>0.126</i>	Not Specified	3.18 (1/8)	1.058 <i>0.042</i>
# SK048C-007-SK-CZ	10-24 UNC (4.762mm)	7.9 <i>0.311</i>	Zinc Plated Steel	10.4 <i>0.409</i>	3.2 <i>0.126</i>	Not Specified	3.18 (1/8)	1.058 <i>0.042</i>
# SK048C-010-SK-CZ	10-24 UNC (4.762mm)	9.5 <i>0.374</i>	Zinc Plated Steel	10.4 <i>0.409</i>	3.2 <i>0.126</i>	Not Specified	3.18 (1/8)	1.058 <i>0.042</i>
# SK048C-013-SK-CZ	10-24 UNC (4.762mm)	12.7 <i>0.500</i>	Zinc Plated Steel	10.4 <i>0.409</i>	3.2 <i>0.126</i>	Not Specified	3.18 (1/8)	1.058 <i>0.042</i>

Indicates item not stocked at time of printing - Please enquire for lead time

Page 7 of 60

E&OE Pricing and all details subject to change without notice - Copyright Miniature Bearings Australia Pty Ltd
MBA Size Listings are a guide to sizes only and must not be solely relied on for critical design information.

Screws - Countersunk - Socket - Steel - Zinc Plated

Part Number	Thread Size (C)	Length (L) mm	Material	Max Head Diameter mm	Max Head Height mm	Approx Thread Length (l) mm	Hex Key (s) mm	Pitch mm
		<i>inches</i>		<i>inches</i>	<i>inches</i>	<i>inches</i>	<i>inches</i>	<i>inches</i>
# SK048C-016-SK-CZ	10-24 UNC (4.762mm)	15.9 <i>0.626</i>	Zinc Plated Steel	10.4 <i>0.409</i>	3.2 <i>0.126</i>	Not Specified	3.18 (1/8)	1.058 <i>0.042</i>
# SK048C-019-SK-CZ	10-24 UNC (4.762mm)	19.1 <i>0.752</i>	Zinc Plated Steel	10.4 <i>0.409</i>	3.2 <i>0.126</i>	Not Specified	3.18 (1/8)	1.058 <i>0.042</i>
# SK048C-025-SK-CZ	10-24 UNC (4.762mm)	25.4 <i>1.000</i>	Zinc Plated Steel	10.4 <i>0.409</i>	3.2 <i>0.126</i>	Not Specified	3.18 (1/8)	1.058 <i>0.042</i>
# SK048C-032-SK-CZ	10-24 UNC (4.762mm)	31.8 <i>1.252</i>	Zinc Plated Steel	10.4 <i>0.409</i>	3.2 <i>0.126</i>	Not Specified	3.18 (1/8)	1.058 <i>0.042</i>
# SK048C-038-SK-CZ	10-24 UNC (4.762mm)	38.1 <i>1.500</i>	Zinc Plated Steel	10.4 <i>0.409</i>	3.2 <i>0.126</i>	Not Specified	3.18 (1/8)	1.058 <i>0.042</i>
# SK048C-045-SK-CZ	10-24 UNC (4.762mm)	44.5 <i>1.752</i>	Zinc Plated Steel	10.4 <i>0.409</i>	3.2 <i>0.126</i>	Not Specified	3.18 (1/8)	1.058 <i>0.042</i>
# SK048C-051-SK-CZ	10-24 UNC (4.762mm)	50.8 <i>2.000</i>	Zinc Plated Steel	10.4 <i>0.409</i>	3.2 <i>0.126</i>	Not Specified	3.18 (1/8)	1.058 <i>0.042</i>
# SK048C-064-SK-CZ	10-24 UNC (4.762mm)	63.5 <i>2.500</i>	Zinc Plated Steel	10.4 <i>0.409</i>	3.2 <i>0.126</i>	Not Specified	3.18 (1/8)	1.058 <i>0.042</i>

Indicates item not stocked at time of printing - Please enquire for lead time

Page 8 of 60

E&OE Pricing and all details subject to change without notice - Copyright Miniature Bearings Australia Pty Ltd

MBA Size Listings are a guide to sizes only and must not be solely relied on for critical design information.

Screws - Countersunk - Socket - Steel - Zinc Plated

Part Number	Thread Size (C)	Length (L) mm	Material	Max Head Diameter mm	Max Head Height mm	Approx Thread Length (l) mm	Hex Key (s) mm	Pitch mm
		<i>inches</i>		<i>inches</i>	<i>inches</i>	<i>inches</i>	<i>inches</i>	<i>inches</i>
# SK048C-076-SK-CZ	10-24 UNC (4.762mm)	76.2 <i>3.000</i>	Zinc Plated Steel	10.4 <i>0.409</i>	3.2 <i>0.126</i>	Not Specified	3.18 (1/8)	1.058 <i>0.042</i>
# SK048W-006-SK-CZ	3/16-24 BSW (4.762mm)	6.4 <i>0.252</i>	Zinc Plated Steel	10.4 <i>0.409</i>	3.2 <i>0.126</i>	Not Specified	4.76 (3/32)	1.058 <i>0.042</i>
# SK048W-010-SK-CZ	3/16-24 BSW (4.762mm)	9.5 <i>0.374</i>	Zinc Plated Steel	10.4 <i>0.409</i>	3.2 <i>0.126</i>	Not Specified	4.76 (3/32)	1.058 <i>0.042</i>
# SK048W-013-SK-CZ	3/16-24 BSW (4.762mm)	12.7 <i>0.500</i>	Zinc Plated Steel	10.4 <i>0.409</i>	3.2 <i>0.126</i>	Not Specified	4.76 (3/32)	1.058 <i>0.042</i>
# SK048W-016-SK-CZ	3/16-24 BSW (4.762mm)	15.9 <i>0.626</i>	Zinc Plated Steel	10.4 <i>0.409</i>	3.2 <i>0.126</i>	Not Specified	4.76 (3/32)	1.058 <i>0.042</i>
# SK048W-019-SK-CZ	3/16-24 BSW (4.762mm)	19.1 <i>0.752</i>	Zinc Plated Steel	10.4 <i>0.409</i>	3.2 <i>0.126</i>	Not Specified	4.76 (3/32)	1.058 <i>0.042</i>
# SK048W-022-SK-CZ	3/16-24 BSW (4.762mm)	22.2 <i>0.874</i>	Zinc Plated Steel	10.4 <i>0.409</i>	3.2 <i>0.126</i>	Not Specified	4.76 (3/32)	1.058 <i>0.042</i>
# SK048W-025-SK-CZ	3/16-24 BSW (4.762mm)	25.4 <i>1.000</i>	Zinc Plated Steel	10.4 <i>0.409</i>	3.2 <i>0.126</i>	Not Specified	4.76 (3/32)	1.058 <i>0.042</i>

Indicates item not stocked at time of printing - Please enquire for lead time

Page 9 of 60

E&OE Pricing and all details subject to change without notice - Copyright Miniature Bearings Australia Pty Ltd

MBA Size Listings are a guide to sizes only and must not be solely relied on for critical design information.

Screws - Countersunk - Socket - Steel - Zinc Plated

Part Number	Thread Size (C)	Length (L) mm	Material	Max Head Diameter mm	Max Head Height mm	Approx Thread Length (l) mm	Hex Key (s) mm	Pitch mm
		<i>inches</i>		<i>inches</i>	<i>inches</i>	<i>inches</i>	<i>inches</i>	<i>inches</i>
# SK048W-032-SK-CZ	3/16-24 BSW (4.762mm)	31.8 <i>1.252</i>	Zinc Plated Steel	10.4 <i>0.409</i>	3.2 <i>0.126</i>	Not Specified	4.76 (3/32)	1.058 <i>0.042</i>
# SK048W-038-SK-CZ	3/16-24 BSW (4.762mm)	38.1 <i>1.500</i>	Zinc Plated Steel	10.4 <i>0.409</i>	3.2 <i>0.126</i>	Not Specified	4.76 (3/32)	1.058 <i>0.042</i>
# SK048W-051-SK-CZ	3/16-24 BSW (4.762mm)	50.8 <i>2.000</i>	Zinc Plated Steel	10.4 <i>0.409</i>	3.2 <i>0.126</i>	Not Specified	4.76 (3/32)	1.058 <i>0.042</i>
# SK048F-006-SK-CZ	10-32 UNF (4.762mm)	6.4 <i>0.252</i>	Zinc Plated Steel	10.4 <i>0.409</i>	3.2 <i>0.126</i>	Not Specified	3.18 (1/8)	0.794 <i>0.031</i>
# SK048F-010-SK-CZ	10-32 UNF (4.762mm)	9.5 <i>0.374</i>	Zinc Plated Steel	10.4 <i>0.409</i>	3.2 <i>0.126</i>	Not Specified	3.18 (1/8)	0.794 <i>0.031</i>
# SK048F-013-SK-CZ	10-32 UNF (4.762mm)	12.7 <i>0.500</i>	Zinc Plated Steel	10.4 <i>0.409</i>	3.2 <i>0.126</i>	Not Specified	3.18 (1/8)	0.794 <i>0.031</i>
# SK048F-016-SK-CZ	10-32 UNF (4.762mm)	15.9 <i>0.626</i>	Zinc Plated Steel	10.4 <i>0.409</i>	3.2 <i>0.126</i>	Not Specified	3.18 (1/8)	0.794 <i>0.031</i>
# SK048F-019-SK-CZ	10-32 UNF (4.762mm)	19.1 <i>0.752</i>	Zinc Plated Steel	10.4 <i>0.409</i>	3.2 <i>0.126</i>	Not Specified	3.18 (1/8)	0.794 <i>0.031</i>

Indicates item not stocked at time of printing - Please enquire for lead time

Page 10 of 60

E&OE Pricing and all details subject to change without notice - Copyright Miniature Bearings Australia Pty Ltd

MBA Size Listings are a guide to sizes only and must not be solely relied on for critical design information.

Screws - Countersunk - Socket - Steel - Zinc Plated

Part Number	Thread Size (C)	Length (L) mm	Material	Max Head Diameter mm	Max Head Height mm	Approx Thread Length (l) mm	Hex Key (s) mm	Pitch mm
		<i>inches</i>		<i>inches</i>	<i>inches</i>	<i>inches</i>	<i>inches</i>	<i>inches</i>
# SK048F-025-SK-CZ	10-32 UNF (4.762mm)	25.4 <i>1.000</i>	Zinc Plated Steel	10.4 <i>0.409</i>	3.2 <i>0.126</i>	Not Specified	3.18 (1/8)	0.794 <i>0.031</i>
# SK048F-032-SK-CZ	10-32 UNF (4.762mm)	31.8 <i>1.252</i>	Zinc Plated Steel	10.4 <i>0.409</i>	3.2 <i>0.126</i>	Not Specified	3.18 (1/8)	0.794 <i>0.031</i>
# SK048F-038-SK-CZ	10-32 UNF (4.762mm)	38.1 <i>1.500</i>	Zinc Plated Steel	10.4 <i>0.409</i>	3.2 <i>0.126</i>	Not Specified	3.18 (1/8)	0.794 <i>0.031</i>
# SK048F-045-SK-CZ	10-32 UNF (4.762mm)	44.5 <i>1.752</i>	Zinc Plated Steel	10.4 <i>0.409</i>	3.2 <i>0.126</i>	Not Specified	3.18 (1/8)	0.794 <i>0.031</i>
# SK048F-051-SK-CZ	10-32 UNF (4.762mm)	50.8 <i>2.000</i>	Zinc Plated Steel	10.4 <i>0.409</i>	3.2 <i>0.126</i>	Not Specified	3.18 (1/8)	0.794 <i>0.031</i>
# SK050M-006-SK-CZ	M5x0.8 (5mm Standard)	6 <i>0.236</i>	Zinc Plated Steel	10.0 <i>0.394</i>	2.8 <i>0.110</i>	16 <i>0.630</i>	3.00 <i>0.118</i>	0.800 <i>0.031</i>
# SK050M-008-SK-CZ	M5x0.8 (5mm Standard)	8 <i>0.315</i>	Zinc Plated Steel	10.0 <i>0.394</i>	2.8 <i>0.110</i>	16 <i>0.630</i>	3.00 <i>0.118</i>	0.800 <i>0.031</i>
# SK050M-010-SK-CZ	M5x0.8 (5mm Standard)	10 <i>0.394</i>	Zinc Plated Steel	10.0 <i>0.394</i>	2.8 <i>0.110</i>	16 <i>0.630</i>	3.00 <i>0.118</i>	0.800 <i>0.031</i>

Indicates item not stocked at time of printing - Please enquire for lead time

Page 11 of 60

E&OE Pricing and all details subject to change without notice - Copyright Miniature Bearings Australia Pty Ltd

MBA Size Listings are a guide to sizes only and must not be solely relied on for critical design information.

Screws - Countersunk - Socket - Steel - Zinc Plated

Part Number	Thread Size (C)	Length (L) mm	Material	Max Head Diameter mm	Max Head Height mm	Approx Thread Length (l) mm	Hex Key (s) mm	Pitch mm
		<i>inches</i>		<i>inches</i>	<i>inches</i>	<i>inches</i>	<i>inches</i>	<i>inches</i>
SK050M-012-SK-CZ	M5x0.8 (5mm Standard)	12	Zinc Plated Steel	10.0	2.8	16	3.00	0.800
		<i>0.472</i>		<i>0.394</i>	<i>0.110</i>	<i>0.630</i>	<i>0.118</i>	<i>0.031</i>
# SK050M-016-SK-CZ	M5x0.8 (5mm Standard)	16	Zinc Plated Steel	10.0	2.8	16	3.00	0.800
		<i>0.630</i>		<i>0.394</i>	<i>0.110</i>	<i>0.630</i>	<i>0.118</i>	<i>0.031</i>
SK050M-020-SK-CZ	M5x0.8 (5mm Standard)	20	Zinc Plated Steel	10.0	2.8	16	3.00	0.800
		<i>0.787</i>		<i>0.394</i>	<i>0.110</i>	<i>0.630</i>	<i>0.118</i>	<i>0.031</i>
# SK050M-025-SK-CZ	M5x0.8 (5mm Standard)	25	Zinc Plated Steel	10.0	2.8	16	3.00	0.800
		<i>0.984</i>		<i>0.394</i>	<i>0.110</i>	<i>0.630</i>	<i>0.118</i>	<i>0.031</i>
# SK050M-030-SK-CZ	M5x0.8 (5mm Standard)	30	Zinc Plated Steel	10.0	2.8	16	3.00	0.800
		<i>1.181</i>		<i>0.394</i>	<i>0.110</i>	<i>0.630</i>	<i>0.118</i>	<i>0.031</i>
# SK050M-035-SK-CZ	M5x0.8 (5mm Standard)	35	Zinc Plated Steel	10.0	2.8	16	3.00	0.800
		<i>1.378</i>		<i>0.394</i>	<i>0.110</i>	<i>0.630</i>	<i>0.118</i>	<i>0.031</i>
# SK050M-040-SK-CZ	M5x0.8 (5mm Standard)	40	Zinc Plated Steel	10.0	2.8	16	3.00	0.800
		<i>1.575</i>		<i>0.394</i>	<i>0.110</i>	<i>0.630</i>	<i>0.118</i>	<i>0.031</i>
# SK050M-045-SK-CZ	M5x0.8 (5mm Standard)	45	Zinc Plated Steel	10.0	2.8	16	3.00	0.800
		<i>1.772</i>		<i>0.394</i>	<i>0.110</i>	<i>0.630</i>	<i>0.118</i>	<i>0.031</i>

Indicates item not stocked at time of printing - Please enquire for lead time

Page 12 of 60

E&OE Pricing and all details subject to change without notice - Copyright Miniature Bearings Australia Pty Ltd

MBA Size Listings are a guide to sizes only and must not be solely relied on for critical design information.

Screws - Countersunk - Socket - Steel - Zinc Plated

Part Number	Thread Size (C)	Length (L) mm	Material	Max Head Diameter mm	Max Head Height mm	Approx Thread Length (l) mm	Hex Key (s) mm	Pitch mm
		<i>inches</i>		<i>inches</i>	<i>inches</i>	<i>inches</i>	<i>inches</i>	<i>inches</i>
# SK050M-050-SK-CZ	M5x0.8 (5mm Standard)	50	Zinc Plated Steel	10.0	2.8	16	3.00	0.800
		<i>1.969</i>		<i>0.394</i>	<i>0.110</i>	<i>0.630</i>	<i>0.118</i>	<i>0.031</i>
# SK050M-055-SK-CZ	M5x0.8 (5mm Standard)	55	Zinc Plated Steel	10.0	2.8	16	3.00	0.800
		<i>2.165</i>		<i>0.394</i>	<i>0.110</i>	<i>0.630</i>	<i>0.118</i>	<i>0.031</i>
# SK050M-060-SK-CZ	M5x0.8 (5mm Standard)	60	Zinc Plated Steel	10.0	2.8	16	3.00	0.800
		<i>2.362</i>		<i>0.394</i>	<i>0.110</i>	<i>0.630</i>	<i>0.118</i>	<i>0.031</i>
# SK050M-065-SK-CZ	M5x0.8 (5mm Standard)	65	Zinc Plated Steel	10.0	2.8	16	3.00	0.800
		<i>2.559</i>		<i>0.394</i>	<i>0.110</i>	<i>0.630</i>	<i>0.118</i>	<i>0.031</i>
# SK050M-070-SK-CZ	M5x0.8 (5mm Standard)	70	Zinc Plated Steel	10.0	2.8	16	3.00	0.800
		<i>2.756</i>		<i>0.394</i>	<i>0.110</i>	<i>0.630</i>	<i>0.118</i>	<i>0.031</i>
# SK050M-080-SK-CZ	M5x0.8 (5mm Standard)	80	Zinc Plated Steel	10.0	2.8	16	3.00	0.800
		<i>3.150</i>		<i>0.394</i>	<i>0.110</i>	<i>0.630</i>	<i>0.118</i>	<i>0.031</i>
# SK050M-090-SK-CZ	M5x0.8 (5mm Standard)	90	Zinc Plated Steel	10.0	2.8	16	3.00	0.800
		<i>3.543</i>		<i>0.394</i>	<i>0.110</i>	<i>0.630</i>	<i>0.118</i>	<i>0.031</i>
# SK050M-100-SK-CZ	M5x0.8 (5mm Standard)	100	Zinc Plated Steel	10.0	2.8	16	3.00	0.800
		<i>3.937</i>		<i>0.394</i>	<i>0.110</i>	<i>0.630</i>	<i>0.118</i>	<i>0.031</i>

Indicates item not stocked at time of printing - Please enquire for lead time

Page 13 of 60

E&OE Pricing and all details subject to change without notice - Copyright Miniature Bearings Australia Pty Ltd

MBA Size Listings are a guide to sizes only and must not be solely relied on for critical design information.

Screws - Countersunk - Socket - Steel - Zinc Plated

Part Number	Thread Size (C)	Length (L) mm	Material	Max Head Diameter mm	Max Head Height mm	Approx Thread Length (l) mm	Hex Key (s) mm	Pitch mm
		<i>inches</i>		<i>inches</i>	<i>inches</i>	<i>inches</i>	<i>inches</i>	<i>inches</i>
# SK060M-008-SK-CZ	M6x1 (6mm Standard)	8	Zinc Plated Steel	12.0	3.3	18	4.00	1.000
		<i>0.315</i>		<i>0.472</i>	<i>0.130</i>	<i>0.709</i>	<i>0.157</i>	<i>0.039</i>
# SK060M-010-SK-CZ	M6x1 (6mm Standard)	10	Zinc Plated Steel	12.0	3.3	18	4.00	1.000
		<i>0.394</i>		<i>0.472</i>	<i>0.130</i>	<i>0.709</i>	<i>0.157</i>	<i>0.039</i>
# SK060M-012-SK-CZ	M6x1 (6mm Standard)	12	Zinc Plated Steel	12.0	3.3	18	4.00	1.000
		<i>0.472</i>		<i>0.472</i>	<i>0.130</i>	<i>0.709</i>	<i>0.157</i>	<i>0.039</i>
# SK060M-016-SK-CZ	M6x1 (6mm Standard)	16	Zinc Plated Steel	12.0	3.3	18	4.00	1.000
		<i>0.630</i>		<i>0.472</i>	<i>0.130</i>	<i>0.709</i>	<i>0.157</i>	<i>0.039</i>
# SK060M-020-SK-CZ	M6x1 (6mm Standard)	20	Zinc Plated Steel	12.0	3.3	18	4.00	1.000
		<i>0.787</i>		<i>0.472</i>	<i>0.130</i>	<i>0.709</i>	<i>0.157</i>	<i>0.039</i>
# SK060M-025-SK-CZ	M6x1 (6mm Standard)	25	Zinc Plated Steel	12.0	3.3	18	4.00	1.000
		<i>0.984</i>		<i>0.472</i>	<i>0.130</i>	<i>0.709</i>	<i>0.157</i>	<i>0.039</i>
# SK060M-030-SK-CZ	M6x1 (6mm Standard)	30	Zinc Plated Steel	12.0	3.3	18	4.00	1.000
		<i>1.181</i>		<i>0.472</i>	<i>0.130</i>	<i>0.709</i>	<i>0.157</i>	<i>0.039</i>
# SK060M-035-SK-CZ	M6x1 (6mm Standard)	35	Zinc Plated Steel	12.0	3.3	18	4.00	1.000
		<i>1.378</i>		<i>0.472</i>	<i>0.130</i>	<i>0.709</i>	<i>0.157</i>	<i>0.039</i>

Indicates item not stocked at time of printing - Please enquire for lead time

Page 14 of 60

E&OE Pricing and all details subject to change without notice - Copyright Miniature Bearings Australia Pty Ltd

MBA Size Listings are a guide to sizes only and must not be solely relied on for critical design information.

Screws - Countersunk - Socket - Steel - Zinc Plated

Part Number	Thread Size (C)	Length (L) mm	Material	Max Head Diameter mm	Max Head Height mm	Approx Thread Length (l) mm	Hex Key (s) mm	Pitch mm
		<i>inches</i>		<i>inches</i>	<i>inches</i>	<i>inches</i>	<i>inches</i>	<i>inches</i>
# SK060M-040-SK-CZ	M6x1 (6mm Standard)	40	Zinc Plated Steel	12.0	3.3	18	4.00	1.000
		<i>1.575</i>		<i>0.472</i>	<i>0.130</i>	<i>0.709</i>	<i>0.157</i>	<i>0.039</i>
# SK060M-045-SK-CZ	M6x1 (6mm Standard)	45	Zinc Plated Steel	12.0	3.3	18	4.00	1.000
		<i>1.772</i>		<i>0.472</i>	<i>0.130</i>	<i>0.709</i>	<i>0.157</i>	<i>0.039</i>
# SK060M-050-SK-CZ	M6x1 (6mm Standard)	50	Zinc Plated Steel	12.0	3.3	18	4.00	1.000
		<i>1.969</i>		<i>0.472</i>	<i>0.130</i>	<i>0.709</i>	<i>0.157</i>	<i>0.039</i>
# SK060M-055-SK-CZ	M6x1 (6mm Standard)	55	Zinc Plated Steel	12.0	3.3	18	4.00	1.000
		<i>2.165</i>		<i>0.472</i>	<i>0.130</i>	<i>0.709</i>	<i>0.157</i>	<i>0.039</i>
# SK060M-060-SK-CZ	M6x1 (6mm Standard)	60	Zinc Plated Steel	12.0	3.3	18	4.00	1.000
		<i>2.362</i>		<i>0.472</i>	<i>0.130</i>	<i>0.709</i>	<i>0.157</i>	<i>0.039</i>
# SK060M-065-SK-CZ	M6x1 (6mm Standard)	65	Zinc Plated Steel	12.0	3.3	18	4.00	1.000
		<i>2.559</i>		<i>0.472</i>	<i>0.130</i>	<i>0.709</i>	<i>0.157</i>	<i>0.039</i>
# SK060M-070-SK-CZ	M6x1 (6mm Standard)	70	Zinc Plated Steel	12.0	3.3	18	4.00	1.000
		<i>2.756</i>		<i>0.472</i>	<i>0.130</i>	<i>0.709</i>	<i>0.157</i>	<i>0.039</i>
# SK060M-075-SK-CZ	M6x1 (6mm Standard)	75	Zinc Plated Steel	12.0	3.3	18	4.00	1.000
		<i>2.953</i>		<i>0.472</i>	<i>0.130</i>	<i>0.709</i>	<i>0.157</i>	<i>0.039</i>

Indicates item not stocked at time of printing - Please enquire for lead time

Page 15 of 60

E&OE Pricing and all details subject to change without notice - Copyright Miniature Bearings Australia Pty Ltd

MBA Size Listings are a guide to sizes only and must not be solely relied on for critical design information.

Screws - Countersunk - Socket - Steel - Zinc Plated

Part Number	Thread Size (C)	Length (L) mm	Material	Max Head Diameter mm	Max Head Height mm	Approx Thread Length (l) mm	Hex Key (s) mm	Pitch mm
		<i>inches</i>		<i>inches</i>	<i>inches</i>	<i>inches</i>	<i>inches</i>	<i>inches</i>
# SK060M-080-SK-CZ	M6x1 (6mm Standard)	80	Zinc Plated Steel	12.0	3.3	18	4.00	1.000
		<i>3.150</i>		<i>0.472</i>	<i>0.130</i>	<i>0.709</i>	<i>0.157</i>	<i>0.039</i>
# SK060M-090-SK-CZ	M6x1 (6mm Standard)	90	Zinc Plated Steel	12.0	3.3	18	4.00	1.000
		<i>3.543</i>		<i>0.472</i>	<i>0.130</i>	<i>0.709</i>	<i>0.157</i>	<i>0.039</i>
# SK060M-100-SK-CZ	M6x1 (6mm Standard)	100	Zinc Plated Steel	12.0	3.3	18	4.00	1.000
		<i>3.937</i>		<i>0.472</i>	<i>0.130</i>	<i>0.709</i>	<i>0.157</i>	<i>0.039</i>
# SK060M-120-SK-CZ	M6x1 (6mm Standard)	120	Zinc Plated Steel	12.0	3.3	18	4.00	1.000
		<i>4.724</i>		<i>0.472</i>	<i>0.130</i>	<i>0.709</i>	<i>0.157</i>	<i>0.039</i>
SK064C-010-SK-CZ	1/4-20 UNC (6.35mm)	9.5	Zinc Plated Steel	13.5	4.1	Not Specified	3.97 (5/32)	1.270
		<i>0.374</i>		<i>0.531</i>	<i>0.161</i>			<i>0.050</i>
# SK064C-013-SK-CZ	1/4-20 UNC (6.35mm)	12.7	Zinc Plated Steel	13.5	4.1	Not Specified	3.97 (5/32)	1.270
		<i>0.500</i>		<i>0.531</i>	<i>0.161</i>			<i>0.050</i>
# SK064C-016-SK-CZ	1/4-20 UNC (6.35mm)	15.9	Zinc Plated Steel	13.5	4.1	Not Specified	3.97 (5/32)	1.270
		<i>0.626</i>		<i>0.531</i>	<i>0.161</i>			<i>0.050</i>
# SK064C-019-SK-CZ	1/4-20 UNC (6.35mm)	19.1	Zinc Plated Steel	13.5	4.1	Not Specified	3.97 (5/32)	1.270
		<i>0.752</i>		<i>0.531</i>	<i>0.161</i>			<i>0.050</i>

Indicates item not stocked at time of printing - Please enquire for lead time

Page 16 of 60

E&OE Pricing and all details subject to change without notice - Copyright Miniature Bearings Australia Pty Ltd

MBA Size Listings are a guide to sizes only and must not be solely relied on for critical design information.

Screws - Countersunk - Socket - Steel - Zinc Plated

Part Number	Thread Size (C)	Length (L) mm	Material	Max Head Diameter mm	Max Head Height mm	Approx Thread Length (l) mm	Hex Key (s) mm	Pitch mm
		<i>inches</i>		<i>inches</i>	<i>inches</i>	<i>inches</i>	<i>inches</i>	<i>inches</i>
# SK064C-025-SK-CZ	1/4-20 UNC (6.35mm)	25.4 <i>1.000</i>	Zinc Plated Steel	13.5 <i>0.531</i>	4.1 <i>0.161</i>	Not Specified	3.97 (5/32)	1.270 <i>0.050</i>
# SK064C-032-SK-CZ	1/4-20 UNC (6.35mm)	31.8 <i>1.252</i>	Zinc Plated Steel	13.5 <i>0.531</i>	4.1 <i>0.161</i>	Not Specified	3.97 (5/32)	1.270 <i>0.050</i>
# SK064C-038-SK-CZ	1/4-20 UNC (6.35mm)	38.1 <i>1.500</i>	Zinc Plated Steel	13.5 <i>0.531</i>	4.1 <i>0.161</i>	Not Specified	3.97 (5/32)	1.270 <i>0.050</i>
# SK064C-045-SK-CZ	1/4-20 UNC (6.35mm)	44.5 <i>1.752</i>	Zinc Plated Steel	13.5 <i>0.531</i>	4.1 <i>0.161</i>	Not Specified	3.97 (5/32)	1.270 <i>0.050</i>
# SK064C-051-SK-CZ	1/4-20 UNC (6.35mm)	50.8 <i>2.000</i>	Zinc Plated Steel	13.5 <i>0.531</i>	4.1 <i>0.161</i>	Not Specified	3.97 (5/32)	1.270 <i>0.050</i>
# SK064C-057-SK-CZ	1/4-20 UNC (6.35mm)	57.2 <i>2.252</i>	Zinc Plated Steel	13.5 <i>0.531</i>	4.1 <i>0.161</i>	Not Specified	3.97 (5/32)	1.270 <i>0.050</i>
# SK064C-063-SK-CZ	1/4-20 UNC (6.35mm)	63.4 <i>2.496</i>	Zinc Plated Steel	13.5 <i>0.531</i>	4.1 <i>0.161</i>	Not Specified	3.97 (5/32)	1.270 <i>0.050</i>
# SK064C-064-SK-CZ	1/4-20 UNC (6.35mm)	63.5 <i>2.500</i>	Zinc Plated Steel	13.5 <i>0.531</i>	4.1 <i>0.161</i>	Not Specified	3.97 (5/32)	1.270 <i>0.050</i>

Indicates item not stocked at time of printing - Please enquire for lead time

Page 17 of 60

E&OE Pricing and all details subject to change without notice - Copyright Miniature Bearings Australia Pty Ltd

MBA Size Listings are a guide to sizes only and must not be solely relied on for critical design information.

Screws - Countersunk - Socket - Steel - Zinc Plated

Part Number	Thread Size (C)	Length (L) mm	Material	Max Head Diameter mm	Max Head Height mm	Approx Thread Length (l) mm	Hex Key (s) mm	Pitch mm
		<i>inches</i>		<i>inches</i>	<i>inches</i>	<i>inches</i>	<i>inches</i>	<i>inches</i>
# SK064C-076-SK-CZ	1/4-20 UNC (6.35mm)	76.2 <i>3.000</i>	Zinc Plated Steel	13.5 <i>0.531</i>	4.1 <i>0.161</i>	Not Specified	3.97 (5/32)	1.270 <i>0.050</i>
# SK064C-089-SK-CZ	1/4-20 UNC (6.35mm)	88.9 <i>3.500</i>	Zinc Plated Steel	13.5 <i>0.531</i>	4.1 <i>0.161</i>	Not Specified	3.97 (5/32)	1.270 <i>0.050</i>
# SK064C-102-SK-CZ	1/4-20 UNC (6.35mm)	101.6 <i>4.000</i>	Zinc Plated Steel	13.5 <i>0.531</i>	4.1 <i>0.161</i>	Not Specified	3.97 (5/32)	1.270 <i>0.050</i>
# SK064W-010-SK-CZ	1/4-20 BSW (6.35mm)	9.5 <i>0.374</i>	Zinc Plated Steel	13.5 <i>0.531</i>	4.1 <i>0.161</i>	Not Specified	3.97 (5/32)	1.270 <i>0.050</i>
# SK064W-013-SK-CZ	1/4-20 BSW (6.35mm)	12.7 <i>0.500</i>	Zinc Plated Steel	13.5 <i>0.531</i>	4.1 <i>0.161</i>	Not Specified	3.97 (5/32)	1.270 <i>0.050</i>
# SK064W-016-SK-CZ	1/4-20 BSW (6.35mm)	15.9 <i>0.626</i>	Zinc Plated Steel	13.5 <i>0.531</i>	4.1 <i>0.161</i>	Not Specified	3.97 (5/32)	1.270 <i>0.050</i>
# SK064W-019-SK-CZ	1/4-20 BSW (6.35mm)	19.1 <i>0.752</i>	Zinc Plated Steel	13.5 <i>0.531</i>	4.1 <i>0.161</i>	Not Specified	3.97 (5/32)	1.270 <i>0.050</i>
# SK064W-022-SK-CZ	1/4-20 BSW (6.35mm)	22.2 <i>0.874</i>	Zinc Plated Steel	13.5 <i>0.531</i>	4.1 <i>0.161</i>	Not Specified	3.97 (5/32)	1.270 <i>0.050</i>

Indicates item not stocked at time of printing - Please enquire for lead time

Page 18 of 60

E&OE Pricing and all details subject to change without notice - Copyright Miniature Bearings Australia Pty Ltd

MBA Size Listings are a guide to sizes only and must not be solely relied on for critical design information.

Screws - Countersunk - Socket - Steel - Zinc Plated

Part Number	Thread Size (C)	Length (L) mm	Material	Max Head Diameter mm	Max Head Height mm	Approx Thread Length (l) mm	Hex Key (s) mm	Pitch mm
		<i>inches</i>		<i>inches</i>	<i>inches</i>	<i>inches</i>	<i>inches</i>	<i>inches</i>
# SK064W-025-SK-CZ	1/4-20 BSW (6.35mm)	25.4 <i>1.000</i>	Zinc Plated Steel	13.5 <i>0.531</i>	4.1 <i>0.161</i>	Not Specified	3.97 (5/32)	1.270 <i>0.050</i>
# SK064W-032-SK-CZ	1/4-20 BSW (6.35mm)	31.8 <i>1.252</i>	Zinc Plated Steel	13.5 <i>0.531</i>	4.1 <i>0.161</i>	Not Specified	3.97 (5/32)	1.270 <i>0.050</i>
# SK064W-038-SK-CZ	1/4-20 BSW (6.35mm)	38.1 <i>1.500</i>	Zinc Plated Steel	13.5 <i>0.531</i>	4.1 <i>0.161</i>	Not Specified	3.97 (5/32)	1.270 <i>0.050</i>
# SK064W-045-SK-CZ	1/4-20 BSW (6.35mm)	44.5 <i>1.752</i>	Zinc Plated Steel	13.5 <i>0.531</i>	4.1 <i>0.161</i>	Not Specified	3.97 (5/32)	1.270 <i>0.050</i>
# SK064W-051-SK-CZ	1/4-20 BSW (6.35mm)	50.8 <i>2.000</i>	Zinc Plated Steel	13.5 <i>0.531</i>	4.1 <i>0.161</i>	Not Specified	3.97 (5/32)	1.270 <i>0.050</i>
# SK064W-064-SK-CZ	1/4-20 BSW (6.35mm)	63.5 <i>2.500</i>	Zinc Plated Steel	13.5 <i>0.531</i>	4.1 <i>0.161</i>	Not Specified	3.97 (5/32)	1.270 <i>0.050</i>
# SK064W-076-SK-CZ	1/4-20 BSW (6.35mm)	76.2 <i>3.000</i>	Zinc Plated Steel	13.5 <i>0.531</i>	4.1 <i>0.161</i>	Not Specified	3.97 (5/32)	1.270 <i>0.050</i>
# SK064F-010-SK-CZ	1/4-28 UNF (6.35mm)	9.5 <i>0.374</i>	Zinc Plated Steel	13.5 <i>0.531</i>	4.1 <i>0.161</i>	Not Specified	3.97 (5/32)	0.907 <i>0.036</i>

Indicates item not stocked at time of printing - Please enquire for lead time

Page 19 of 60

E&OE Pricing and all details subject to change without notice - Copyright Miniature Bearings Australia Pty Ltd

MBA Size Listings are a guide to sizes only and must not be solely relied on for critical design information.

Screws - Countersunk - Socket - Steel - Zinc Plated

Part Number	Thread Size (C)	Length (L) mm	Material	Max Head Diameter mm	Max Head Height mm	Approx Thread Length (l) mm	Hex Key (s) mm	Pitch mm
		<i>inches</i>		<i>inches</i>	<i>inches</i>	<i>inches</i>	<i>inches</i>	<i>inches</i>
# SK064F-013-SK-CZ	1/4-28 UNF (6.35mm)	12.7 <i>0.500</i>	Zinc Plated Steel	13.5 <i>0.531</i>	4.1 <i>0.161</i>	Not Specified	3.97 (5/32)	0.907 <i>0.036</i>
# SK064F-016-SK-CZ	1/4-28 UNF (6.35mm)	15.9 <i>0.626</i>	Zinc Plated Steel	13.5 <i>0.531</i>	4.1 <i>0.161</i>	Not Specified	3.97 (5/32)	0.907 <i>0.036</i>
# SK064F-019-SK-CZ	1/4-28 UNF (6.35mm)	19.1 <i>0.752</i>	Zinc Plated Steel	13.5 <i>0.531</i>	4.1 <i>0.161</i>	Not Specified	3.97 (5/32)	0.907 <i>0.036</i>
# SK064F-025-SK-CZ	1/4-28 UNF (6.35mm)	25.4 <i>1.000</i>	Zinc Plated Steel	13.5 <i>0.531</i>	4.1 <i>0.161</i>	Not Specified	3.97 (5/32)	0.907 <i>0.036</i>
# SK064F-032-SK-CZ	1/4-28 UNF (6.35mm)	31.8 <i>1.252</i>	Zinc Plated Steel	13.5 <i>0.531</i>	4.1 <i>0.161</i>	Not Specified	3.97 (5/32)	0.907 <i>0.036</i>
# SK064F-038-SK-CZ	1/4-28 UNF (6.35mm)	38.1 <i>1.500</i>	Zinc Plated Steel	13.5 <i>0.531</i>	4.1 <i>0.161</i>	Not Specified	3.97 (5/32)	0.907 <i>0.036</i>
# SK064F-051-SK-CZ	1/4-28 UNF (6.35mm)	50.8 <i>2.000</i>	Zinc Plated Steel	13.5 <i>0.531</i>	4.1 <i>0.161</i>	Not Specified	3.97 (5/32)	0.907 <i>0.036</i>
SK079C-013-SK-CZ	5/16-18 UNC (7.938mm)	12.7 <i>0.500</i>	Zinc Plated Steel	16.7 <i>0.657</i>	5.0 <i>0.197</i>	Not Specified	4.76 (3/16)	1.411 <i>0.056</i>

Indicates item not stocked at time of printing - Please enquire for lead time

Page 20 of 60

E&OE Pricing and all details subject to change without notice - Copyright Miniature Bearings Australia Pty Ltd

MBA Size Listings are a guide to sizes only and must not be solely relied on for critical design information.

Screws - Countersunk - Socket - Steel - Zinc Plated

Part Number	Thread Size (C)	Length (L) mm	Material	Max Head Diameter mm	Max Head Height mm	Approx Thread Length (l) mm	Hex Key (s) mm	Pitch mm
		<i>inches</i>		<i>inches</i>	<i>inches</i>	<i>inches</i>	<i>inches</i>	<i>inches</i>
# SK079C-016-SK-CZ	5/16-18 UNC (7.938mm)	15.9 <i>0.626</i>	Zinc Plated Steel	16.7 <i>0.657</i>	5.0 <i>0.197</i>	Not Specified	4.76 (3/16)	1.411 <i>0.056</i>
SK079C-019-SK-CZ	5/16-18 UNC (7.938mm)	19.1 <i>0.752</i>	Zinc Plated Steel	16.7 <i>0.657</i>	5.0 <i>0.197</i>	Not Specified	4.76 (3/16)	1.411 <i>0.056</i>
# SK079C-025-SK-CZ	5/16-18 UNC (7.938mm)	25.4 <i>1.000</i>	Zinc Plated Steel	16.7 <i>0.657</i>	5.0 <i>0.197</i>	Not Specified	4.76 (3/16)	1.411 <i>0.056</i>
# SK079C-032-SK-CZ	5/16-18 UNC (7.938mm)	31.8 <i>1.252</i>	Zinc Plated Steel	16.7 <i>0.657</i>	5.0 <i>0.197</i>	Not Specified	4.76 (3/16)	1.411 <i>0.056</i>
# SK079C-038-SK-CZ	5/16-18 UNC (7.938mm)	38.1 <i>1.500</i>	Zinc Plated Steel	16.7 <i>0.657</i>	5.0 <i>0.197</i>	Not Specified	4.76 (3/16)	1.411 <i>0.056</i>
# SK079C-045-SK-CZ	5/16-18 UNC (7.938mm)	44.5 <i>1.752</i>	Zinc Plated Steel	16.7 <i>0.657</i>	5.0 <i>0.197</i>	Not Specified	4.76 (3/16)	1.411 <i>0.056</i>
# SK079C-051-SK-CZ	5/16-18 UNC (7.938mm)	50.8 <i>2.000</i>	Zinc Plated Steel	16.7 <i>0.657</i>	5.0 <i>0.197</i>	Not Specified	4.76 (3/16)	1.411 <i>0.056</i>
# SK079C-057-SK-CZ	5/16-18 UNC (7.938mm)	57.2 <i>2.252</i>	Zinc Plated Steel	16.7 <i>0.657</i>	5.0 <i>0.197</i>	Not Specified	4.76 (3/16)	1.411 <i>0.056</i>

Indicates item not stocked at time of printing - Please enquire for lead time

Page 21 of 60

E&OE Pricing and all details subject to change without notice - Copyright Miniature Bearings Australia Pty Ltd

MBA Size Listings are a guide to sizes only and must not be solely relied on for critical design information.

Screws - Countersunk - Socket - Steel - Zinc Plated

Part Number	Thread Size (C)	Length (L) mm	Material	Max Head Diameter mm	Max Head Height mm	Approx Thread Length (l) mm	Hex Key (s) mm	Pitch mm
		<i>inches</i>		<i>inches</i>	<i>inches</i>	<i>inches</i>	<i>inches</i>	<i>inches</i>
# SK079C-064-SK-CZ	5/16-18 UNC (7.938mm)	63.5 <i>2.500</i>	Zinc Plated Steel	16.7 <i>0.657</i>	5.0 <i>0.197</i>	Not Specified	4.76 (3/16)	1.411 <i>0.056</i>
# SK079C-076-SK-CZ	5/16-18 UNC (7.938mm)	76.2 <i>3.000</i>	Zinc Plated Steel	16.7 <i>0.657</i>	5.0 <i>0.197</i>	Not Specified	4.76 (3/16)	1.411 <i>0.056</i>
# SK079C-089-SK-CZ	5/16-18 UNC (7.938mm)	88.9 <i>3.500</i>	Zinc Plated Steel	16.7 <i>0.657</i>	5.0 <i>0.197</i>	Not Specified	4.76 (3/16)	1.411 <i>0.056</i>
# SK079C-102-SK-CZ	5/16-18 UNC (7.938mm)	101.6 <i>4.000</i>	Zinc Plated Steel	16.7 <i>0.657</i>	5.0 <i>0.197</i>	Not Specified	4.76 (3/16)	1.411 <i>0.056</i>
# SK079W-013-SK-CZ	5/16-18 BSW (7.938mm)	12.7 <i>0.500</i>	Zinc Plated Steel	16.7 <i>0.657</i>	5.0 <i>0.197</i>	Not Specified	4.76 (3/16)	1.411 <i>0.056</i>
# SK079W-016-SK-CZ	5/16-18 BSW (7.938mm)	15.9 <i>0.626</i>	Zinc Plated Steel	16.7 <i>0.657</i>	5.0 <i>0.197</i>	Not Specified	4.76 (3/16)	1.411 <i>0.056</i>
# SK079W-019-SK-CZ	5/16-18 BSW (7.938mm)	19.1 <i>0.752</i>	Zinc Plated Steel	16.7 <i>0.657</i>	5.0 <i>0.197</i>	Not Specified	4.76 (3/16)	1.411 <i>0.056</i>
# SK079W-025-SK-CZ	5/16-18 BSW (7.938mm)	25.4 <i>1.000</i>	Zinc Plated Steel	16.7 <i>0.657</i>	5.0 <i>0.197</i>	Not Specified	4.76 (3/16)	1.411 <i>0.056</i>

Indicates item not stocked at time of printing - Please enquire for lead time

Page 22 of 60

E&OE Pricing and all details subject to change without notice - Copyright Miniature Bearings Australia Pty Ltd

MBA Size Listings are a guide to sizes only and must not be solely relied on for critical design information.

Screws - Countersunk - Socket - Steel - Zinc Plated

Part Number	Thread Size (C)	Length (L) mm	Material	Max Head Diameter mm	Max Head Height mm	Approx Thread Length (l) mm	Hex Key (s) mm	Pitch mm
		<i>inches</i>		<i>inches</i>	<i>inches</i>	<i>inches</i>	<i>inches</i>	<i>inches</i>
# SK079W-032-SK-CZ	5/16-18 BSW (7.938mm)	31.8	Zinc Plated Steel	16.7	5.0	Not Specified	4.76 (3/16)	1.411
		<i>1.252</i>		<i>0.657</i>	<i>0.197</i>			<i>0.056</i>
# SK079W-038-SK-CZ	5/16-18 BSW (7.938mm)	38.1	Zinc Plated Steel	16.7	5.0	Not Specified	4.76 (3/16)	1.411
		<i>1.500</i>		<i>0.657</i>	<i>0.197</i>			<i>0.056</i>
# SK079W-045-SK-CZ	5/16-18 BSW (7.938mm)	44.5	Zinc Plated Steel	16.7	5.0	Not Specified	4.76 (3/16)	1.411
		<i>1.752</i>		<i>0.657</i>	<i>0.197</i>			<i>0.056</i>
# SK079W-051-SK-CZ	5/16-18 BSW (7.938mm)	50.8	Zinc Plated Steel	16.7	5.0	Not Specified	4.76 (3/16)	1.411
		<i>2.000</i>		<i>0.657</i>	<i>0.197</i>			<i>0.056</i>
# SK079W-064-SK-CZ	5/16-18 BSW (7.938mm)	63.5	Zinc Plated Steel	16.7	5.0	Not Specified	4.76 (3/16)	1.411
		<i>2.500</i>		<i>0.657</i>	<i>0.197</i>			<i>0.056</i>
# SK079W-076-SK-CZ	5/16-18 BSW (7.938mm)	76.2	Zinc Plated Steel	16.7	5.0	Not Specified	4.76 (3/16)	1.411
		<i>3.000</i>		<i>0.657</i>	<i>0.197</i>			<i>0.056</i>
# SK079F-010-SK-CZ	5/16-24 UNF (7.938mm)	9.5	Zinc Plated Steel	16.7	5.0	Not Specified	4.76 (3/16)	1.058
		<i>0.374</i>		<i>0.657</i>	<i>0.197</i>			<i>0.042</i>
# SK079F-013-SK-CZ	5/16-24 UNF (7.938mm)	12.7	Zinc Plated Steel	16.7	5.0	Not Specified	4.76 (3/16)	1.058
		<i>0.500</i>		<i>0.657</i>	<i>0.197</i>			<i>0.042</i>

Indicates item not stocked at time of printing - Please enquire for lead time

Page 23 of 60

E&OE Pricing and all details subject to change without notice - Copyright Miniature Bearings Australia Pty Ltd

MBA Size Listings are a guide to sizes only and must not be solely relied on for critical design information.

Screws - Countersunk - Socket - Steel - Zinc Plated

Part Number	Thread Size (C)	Length (L) mm	Material	Max Head Diameter mm	Max Head Height mm	Approx Thread Length (l) mm	Hex Key (s) mm	Pitch mm
		<i>inches</i>		<i>inches</i>	<i>inches</i>	<i>inches</i>	<i>inches</i>	<i>inches</i>
# SK079F-016-SK-CZ	5/16-24 UNF (7.938mm)	15.9 <i>0.626</i>	Zinc Plated Steel	16.7 <i>0.657</i>	5.0 <i>0.197</i>	Not Specified	4.76 (3/16)	1.058 <i>0.042</i>
# SK079F-019-SK-CZ	5/16-24 UNF (7.938mm)	19.1 <i>0.752</i>	Zinc Plated Steel	16.7 <i>0.657</i>	5.0 <i>0.197</i>	Not Specified	4.76 (3/16)	1.058 <i>0.042</i>
# SK079F-025-SK-CZ	5/16-24 UNF (7.938mm)	25.4 <i>1.000</i>	Zinc Plated Steel	16.7 <i>0.657</i>	5.0 <i>0.197</i>	Not Specified	4.76 (3/16)	1.058 <i>0.042</i>
# SK079F-032-SK-CZ	5/16-24 UNF (7.938mm)	31.8 <i>1.252</i>	Zinc Plated Steel	16.7 <i>0.657</i>	5.0 <i>0.197</i>	Not Specified	4.76 (3/16)	1.058 <i>0.042</i>
# SK079F-038-SK-CZ	5/16-24 UNF (7.938mm)	38.1 <i>1.500</i>	Zinc Plated Steel	16.7 <i>0.657</i>	5.0 <i>0.197</i>	Not Specified	4.76 (3/16)	1.058 <i>0.042</i>
# SK079F-051-SK-CZ	5/16-24 UNF (7.938mm)	50.8 <i>2.000</i>	Zinc Plated Steel	16.7 <i>0.657</i>	5.0 <i>0.197</i>	Not Specified	4.76 (3/16)	1.058 <i>0.042</i>
# SK079F-063-SK-CZ	5/16-24 UNF (7.938mm)	63.4 <i>2.496</i>	Zinc Plated Steel	16.7 <i>0.657</i>	5.0 <i>0.197</i>	Not Specified	4.76 (3/16)	1.058 <i>0.042</i>
# SK079F-064-SK-CZ	5/16-24 UNF (7.938mm)	63.5 <i>2.500</i>	Zinc Plated Steel	16.7 <i>0.657</i>	5.0 <i>0.197</i>	Not Specified	4.76 (3/16)	1.058 <i>0.042</i>

Indicates item not stocked at time of printing - Please enquire for lead time

Page 24 of 60

E&OE Pricing and all details subject to change without notice - Copyright Miniature Bearings Australia Pty Ltd

MBA Size Listings are a guide to sizes only and must not be solely relied on for critical design information.

Screws - Countersunk - Socket - Steel - Zinc Plated

Part Number	Thread Size (C)	Length (L) mm	Material	Max Head Diameter mm	Max Head Height mm	Approx Thread Length (l) mm	Hex Key (s) mm	Pitch mm
		<i>inches</i>		<i>inches</i>	<i>inches</i>	<i>inches</i>	<i>inches</i>	<i>inches</i>
# SK080M-010-SK-CZ	M8x1.25 (8mm Standard)	10	Zinc Plated Steel	16.0	4.4	22	5.00	1.250
		<i>0.394</i>		<i>0.630</i>	<i>0.173</i>	<i>0.866</i>	<i>0.197</i>	<i>0.049</i>
# SK080M-012-SK-CZ	M8x1.25 (8mm Standard)	12	Zinc Plated Steel	16.0	4.4	22	5.00	1.250
		<i>0.472</i>		<i>0.630</i>	<i>0.173</i>	<i>0.866</i>	<i>0.197</i>	<i>0.049</i>
# SK080M-016-SK-CZ	M8x1.25 (8mm Standard)	16	Zinc Plated Steel	16.0	4.4	22	5.00	1.250
		<i>0.630</i>		<i>0.630</i>	<i>0.173</i>	<i>0.866</i>	<i>0.197</i>	<i>0.049</i>
# SK080M-020-SK-CZ	M8x1.25 (8mm Standard)	20	Zinc Plated Steel	16.0	4.4	22	5.00	1.250
		<i>0.787</i>		<i>0.630</i>	<i>0.173</i>	<i>0.866</i>	<i>0.197</i>	<i>0.049</i>
SK080M-025-SK-CZ	M8x1.25 (8mm Standard)	25	Zinc Plated Steel	16.0	4.4	22	5.00	1.250
		<i>0.984</i>		<i>0.630</i>	<i>0.173</i>	<i>0.866</i>	<i>0.197</i>	<i>0.049</i>
# SK080M-030-SK-CZ	M8x1.25 (8mm Standard)	30	Zinc Plated Steel	16.0	4.4	22	5.00	1.250
		<i>1.181</i>		<i>0.630</i>	<i>0.173</i>	<i>0.866</i>	<i>0.197</i>	<i>0.049</i>
# SK080M-035-SK-CZ	M8x1.25 (8mm Standard)	35	Zinc Plated Steel	16.0	4.4	22	5.00	1.250
		<i>1.378</i>		<i>0.630</i>	<i>0.173</i>	<i>0.866</i>	<i>0.197</i>	<i>0.049</i>
# SK080M-040-SK-CZ	M8x1.25 (8mm Standard)	40	Zinc Plated Steel	16.0	4.4	22	5.00	1.250
		<i>1.575</i>		<i>0.630</i>	<i>0.173</i>	<i>0.866</i>	<i>0.197</i>	<i>0.049</i>

Indicates item not stocked at time of printing - Please enquire for lead time

Page 25 of 60

E&OE Pricing and all details subject to change without notice - Copyright Miniature Bearings Australia Pty Ltd

MBA Size Listings are a guide to sizes only and must not be solely relied on for critical design information.

Screws - Countersunk - Socket - Steel - Zinc Plated

Part Number	Thread Size (C)	Length (L) mm	Material	Max Head Diameter mm	Max Head Height mm	Approx Thread Length (l) mm	Hex Key (s) mm	Pitch mm
		<i>inches</i>		<i>inches</i>	<i>inches</i>	<i>inches</i>	<i>inches</i>	<i>inches</i>
SK080M-045-SK-CZ	M8x1.25 (8mm Standard)	45	Zinc Plated Steel	16.0	4.4	22	5.00	1.250
		<i>1.772</i>		<i>0.630</i>	<i>0.173</i>	<i>0.866</i>	<i>0.197</i>	<i>0.049</i>
# SK080M-050-SK-CZ	M8x1.25 (8mm Standard)	50	Zinc Plated Steel	16.0	4.4	22	5.00	1.250
		<i>1.969</i>		<i>0.630</i>	<i>0.173</i>	<i>0.866</i>	<i>0.197</i>	<i>0.049</i>
# SK080M-055-SK-CZ	M8x1.25 (8mm Standard)	55	Zinc Plated Steel	16.0	4.4	22	5.00	1.250
		<i>2.165</i>		<i>0.630</i>	<i>0.173</i>	<i>0.866</i>	<i>0.197</i>	<i>0.049</i>
# SK080M-060-SK-CZ	M8x1.25 (8mm Standard)	60	Zinc Plated Steel	16.0	4.4	22	5.00	1.250
		<i>2.362</i>		<i>0.630</i>	<i>0.173</i>	<i>0.866</i>	<i>0.197</i>	<i>0.049</i>
# SK080M-065-SK-CZ	M8x1.25 (8mm Standard)	65	Zinc Plated Steel	16.0	4.4	22	5.00	1.250
		<i>2.559</i>		<i>0.630</i>	<i>0.173</i>	<i>0.866</i>	<i>0.197</i>	<i>0.049</i>
# SK080M-070-SK-CZ	M8x1.25 (8mm Standard)	70	Zinc Plated Steel	16.0	4.4	22	5.00	1.250
		<i>2.756</i>		<i>0.630</i>	<i>0.173</i>	<i>0.866</i>	<i>0.197</i>	<i>0.049</i>
# SK080M-075-SK-CZ	M8x1.25 (8mm Standard)	75	Zinc Plated Steel	16.0	4.4	22	5.00	1.250
		<i>2.953</i>		<i>0.630</i>	<i>0.173</i>	<i>0.866</i>	<i>0.197</i>	<i>0.049</i>
# SK080M-080-SK-CZ	M8x1.25 (8mm Standard)	80	Zinc Plated Steel	16.0	4.4	22	5.00	1.250
		<i>3.150</i>		<i>0.630</i>	<i>0.173</i>	<i>0.866</i>	<i>0.197</i>	<i>0.049</i>

Indicates item not stocked at time of printing - Please enquire for lead time

Page 26 of 60

E&OE Pricing and all details subject to change without notice - Copyright Miniature Bearings Australia Pty Ltd

MBA Size Listings are a guide to sizes only and must not be solely relied on for critical design information.

Screws - Countersunk - Socket - Steel - Zinc Plated

Part Number	Thread Size (C)	Length (L) mm	Material	Max Head Diameter mm	Max Head Height mm	Approx Thread Length (l) mm	Hex Key (s) mm	Pitch mm
		<i>inches</i>		<i>inches</i>	<i>inches</i>	<i>inches</i>	<i>inches</i>	<i>inches</i>
# SK080M-090-SK-CZ	M8x1.25 (8mm Standard)	90	Zinc Plated Steel	16.0	4.4	22	5.00	1.250
		<i>3.543</i>		<i>0.630</i>	<i>0.173</i>	<i>0.866</i>	<i>0.197</i>	<i>0.049</i>
# SK080M-100-SK-CZ	M8x1.25 (8mm Standard)	100	Zinc Plated Steel	16.0	4.4	22	5.00	1.250
		<i>3.937</i>		<i>0.630</i>	<i>0.173</i>	<i>0.866</i>	<i>0.197</i>	<i>0.049</i>
# SK080M-110-SK-CZ	M8x1.25 (8mm Standard)	110	Zinc Plated Steel	16.0	4.4	22	5.00	1.250
		<i>4.331</i>		<i>0.630</i>	<i>0.173</i>	<i>0.866</i>	<i>0.197</i>	<i>0.049</i>
# SK080M-120-SK-CZ	M8x1.25 (8mm Standard)	120	Zinc Plated Steel	16.0	4.4	22	5.00	1.250
		<i>4.724</i>		<i>0.630</i>	<i>0.173</i>	<i>0.866</i>	<i>0.197</i>	<i>0.049</i>
# SK095C-013-SK-CZ	3/8-16 UNC (9.525mm)	12.7	Zinc Plated Steel	19.8	5.9	Not Specified	5.56 (7/32)	1.588
		<i>0.500</i>		<i>0.780</i>	<i>0.232</i>			<i>0.063</i>
# SK095C-016-SK-CZ	3/8-16 UNC (9.525mm)	15.9	Zinc Plated Steel	19.8	5.9	Not Specified	5.56 (7/32)	1.588
		<i>0.626</i>		<i>0.780</i>	<i>0.232</i>			<i>0.063</i>
# SK095C-019-SK-CZ	3/8-16 UNC (9.525mm)	19.1	Zinc Plated Steel	19.8	5.9	Not Specified	5.56 (7/32)	1.588
		<i>0.752</i>		<i>0.780</i>	<i>0.232</i>			<i>0.063</i>
# SK095C-025-SK-CZ	3/8-16 UNC (9.525mm)	25.4	Zinc Plated Steel	19.8	5.9	Not Specified	5.56 (7/32)	1.588
		<i>1.000</i>		<i>0.780</i>	<i>0.232</i>			<i>0.063</i>

Indicates item not stocked at time of printing - Please enquire for lead time

Page 27 of 60

E&OE Pricing and all details subject to change without notice - Copyright Miniature Bearings Australia Pty Ltd

MBA Size Listings are a guide to sizes only and must not be solely relied on for critical design information.

Screws - Countersunk - Socket - Steel - Zinc Plated

Part Number	Thread Size (C)	Length (L) mm	Material	Max Head Diameter mm	Max Head Height mm	Approx Thread Length (l) mm	Hex Key (s) mm	Pitch mm
		<i>inches</i>		<i>inches</i>	<i>inches</i>	<i>inches</i>	<i>inches</i>	<i>inches</i>
# SK095C-032-SK-CZ	3/8-16 UNC (9.525mm)	31.8 <i>1.252</i>	Zinc Plated Steel	19.8 <i>0.780</i>	5.9 <i>0.232</i>	Not Specified	5.56 (7/32)	1.588 <i>0.063</i>
# SK095C-038-SK-CZ	3/8-16 UNC (9.525mm)	38.1 <i>1.500</i>	Zinc Plated Steel	19.8 <i>0.780</i>	5.9 <i>0.232</i>	Not Specified	5.56 (7/32)	1.588 <i>0.063</i>
# SK095C-045-SK-CZ	3/8-16 UNC (9.525mm)	44.5 <i>1.752</i>	Zinc Plated Steel	19.8 <i>0.780</i>	5.9 <i>0.232</i>	Not Specified	5.56 (7/32)	1.588 <i>0.063</i>
# SK095C-051-SK-CZ	3/8-16 UNC (9.525mm)	50.8 <i>2.000</i>	Zinc Plated Steel	19.8 <i>0.780</i>	5.9 <i>0.232</i>	Not Specified	5.56 (7/32)	1.588 <i>0.063</i>
# SK095C-057-SK-CZ	3/8-16 UNC (9.525mm)	57.2 <i>2.252</i>	Zinc Plated Steel	19.8 <i>0.780</i>	5.9 <i>0.232</i>	Not Specified	5.56 (7/32)	1.588 <i>0.063</i>
# SK095C-064-SK-CZ	3/8-16 UNC (9.525mm)	63.5 <i>2.500</i>	Zinc Plated Steel	19.8 <i>0.780</i>	5.9 <i>0.232</i>	Not Specified	5.56 (7/32)	1.588 <i>0.063</i>
# SK095C-070-SK-CZ	3/8-16 UNC (9.525mm)	69.9 <i>2.752</i>	Zinc Plated Steel	19.8 <i>0.780</i>	5.9 <i>0.232</i>	Not Specified	5.56 (7/32)	1.588 <i>0.063</i>
# SK095C-076-SK-CZ	3/8-16 UNC (9.525mm)	76.2 <i>3.000</i>	Zinc Plated Steel	19.8 <i>0.780</i>	5.9 <i>0.232</i>	Not Specified	5.56 (7/32)	1.588 <i>0.063</i>

Indicates item not stocked at time of printing - Please enquire for lead time

Page 28 of 60

E&OE Pricing and all details subject to change without notice - Copyright Miniature Bearings Australia Pty Ltd

MBA Size Listings are a guide to sizes only and must not be solely relied on for critical design information.

Screws - Countersunk - Socket - Steel - Zinc Plated

Part Number	Thread Size (C)	Length (L) mm	Material	Max Head Diameter mm	Max Head Height mm	Approx Thread Length (l) mm	Hex Key (s) mm	Pitch mm
		<i>inches</i>		<i>inches</i>	<i>inches</i>	<i>inches</i>	<i>inches</i>	<i>inches</i>
# SK095C-089-SK-CZ	3/8-16 UNC (9.525mm)	88.9 <i>3.500</i>	Zinc Plated Steel	19.8 <i>0.780</i>	5.9 <i>0.232</i>	Not Specified	5.56 (7/32)	1.588 <i>0.063</i>
# SK095C-102-SK-CZ	3/8-16 UNC (9.525mm)	101.6 <i>4.000</i>	Zinc Plated Steel	19.8 <i>0.780</i>	5.9 <i>0.232</i>	Not Specified	5.56 (7/32)	1.588 <i>0.063</i>
# SK095C-127-SK-CZ	3/8-16 UNC (9.525mm)	127 <i>5.000</i>	Zinc Plated Steel	19.8 <i>0.780</i>	5.9 <i>0.232</i>	Not Specified	5.56 (7/32)	1.588 <i>0.063</i>
# SK095C-152-SK-CZ	3/8-16 UNC (9.525mm)	152.4 <i>6.000</i>	Zinc Plated Steel	19.8 <i>0.780</i>	5.9 <i>0.232</i>	Not Specified	5.56 (7/32)	1.588 <i>0.063</i>
# SK095W-013-SK-CZ	3/8-16 BSW (9.525mm)	12.7 <i>0.500</i>	Zinc Plated Steel	19.8 <i>0.780</i>	5.9 <i>0.232</i>	Not Specified	5.56 (7/32)	1.588 <i>0.063</i>
# SK095W-016-SK-CZ	3/8-16 BSW (9.525mm)	15.9 <i>0.626</i>	Zinc Plated Steel	19.8 <i>0.780</i>	5.9 <i>0.232</i>	Not Specified	5.56 (7/32)	1.588 <i>0.063</i>
# SK095W-019-SK-CZ	3/8-16 BSW (9.525mm)	19.1 <i>0.752</i>	Zinc Plated Steel	19.8 <i>0.780</i>	5.9 <i>0.232</i>	Not Specified	5.56 (7/32)	1.588 <i>0.063</i>
# SK095W-022-SK-CZ	3/8-16 BSW (9.525mm)	22.2 <i>0.874</i>	Zinc Plated Steel	19.8 <i>0.780</i>	5.9 <i>0.232</i>	Not Specified	5.56 (7/32)	1.588 <i>0.063</i>

Indicates item not stocked at time of printing - Please enquire for lead time

Page 29 of 60

E&OE Pricing and all details subject to change without notice - Copyright Miniature Bearings Australia Pty Ltd
MBA Size Listings are a guide to sizes only and must not be solely relied on for critical design information.

Screws - Countersunk - Socket - Steel - Zinc Plated

Part Number	Thread Size (C)	Length (L) mm	Material	Max Head Diameter mm	Max Head Height mm	Approx Thread Length (l) mm	Hex Key (s) mm	Pitch mm
		<i>inches</i>		<i>inches</i>	<i>inches</i>	<i>inches</i>	<i>inches</i>	<i>inches</i>
# SK095W-025-SK-CZ	3/8-16 BSW (9.525mm)	25.4 <i>1.000</i>	Zinc Plated Steel	19.8 <i>0.780</i>	5.9 <i>0.232</i>	Not Specified	5.56 (7/32)	1.588 <i>0.063</i>
# SK095W-032-SK-CZ	3/8-16 BSW (9.525mm)	31.8 <i>1.252</i>	Zinc Plated Steel	19.8 <i>0.780</i>	5.9 <i>0.232</i>	Not Specified	5.56 (7/32)	1.588 <i>0.063</i>
# SK095W-038-SK-CZ	3/8-16 BSW (9.525mm)	38.1 <i>1.500</i>	Zinc Plated Steel	19.8 <i>0.780</i>	5.9 <i>0.232</i>	Not Specified	5.56 (7/32)	1.588 <i>0.063</i>
# SK095W-045-SK-CZ	3/8-16 BSW (9.525mm)	44.5 <i>1.752</i>	Zinc Plated Steel	19.8 <i>0.780</i>	5.9 <i>0.232</i>	Not Specified	5.56 (7/32)	1.588 <i>0.063</i>
# SK095W-051-SK-CZ	3/8-16 BSW (9.525mm)	50.8 <i>2.000</i>	Zinc Plated Steel	19.8 <i>0.780</i>	5.9 <i>0.232</i>	Not Specified	5.56 (7/32)	1.588 <i>0.063</i>
# SK095W-064-SK-CZ	3/8-16 BSW (9.525mm)	63.5 <i>2.500</i>	Zinc Plated Steel	19.8 <i>0.780</i>	5.9 <i>0.232</i>	Not Specified	5.56 (7/32)	1.588 <i>0.063</i>
# SK095W-076-SK-CZ	3/8-16 BSW (9.525mm)	76.2 <i>3.000</i>	Zinc Plated Steel	19.8 <i>0.780</i>	5.9 <i>0.232</i>	Not Specified	5.56 (7/32)	1.588 <i>0.063</i>
# SK095F-016-SK-CZ	3/8-24 UNF (9.525mm)	15.9 <i>0.626</i>	Zinc Plated Steel	19.8 <i>0.780</i>	5.9 <i>0.232</i>	Not Specified	5.56 (7/32)	1.058 <i>0.042</i>

Indicates item not stocked at time of printing - Please enquire for lead time

Page 30 of 60

E&OE Pricing and all details subject to change without notice - Copyright Miniature Bearings Australia Pty Ltd

MBA Size Listings are a guide to sizes only and must not be solely relied on for critical design information.

Screws - Countersunk - Socket - Steel - Zinc Plated

Part Number	Thread Size (C)	Length (L) mm	Material	Max Head Diameter mm	Max Head Height mm	Approx Thread Length (l) mm	Hex Key (s) mm	Pitch mm
		<i>inches</i>		<i>inches</i>	<i>inches</i>	<i>inches</i>	<i>inches</i>	<i>inches</i>
# SK095F-019-SK-CZ	3/8-24 UNF (9.525mm)	19.1 <i>0.752</i>	Zinc Plated Steel	19.8 <i>0.780</i>	5.9 <i>0.232</i>	Not Specified	5.56 (7/32)	1.058 <i>0.042</i>
# SK095F-025-SK-CZ	3/8-24 UNF (9.525mm)	25.4 <i>1.000</i>	Zinc Plated Steel	19.8 <i>0.780</i>	5.9 <i>0.232</i>	Not Specified	5.56 (7/32)	1.058 <i>0.042</i>
# SK095F-032-SK-CZ	3/8-24 UNF (9.525mm)	31.8 <i>1.252</i>	Zinc Plated Steel	19.8 <i>0.780</i>	5.9 <i>0.232</i>	Not Specified	5.56 (7/32)	1.058 <i>0.042</i>
# SK095F-038-SK-CZ	3/8-24 UNF (9.525mm)	38.1 <i>1.500</i>	Zinc Plated Steel	19.8 <i>0.780</i>	5.9 <i>0.232</i>	Not Specified	5.56 (7/32)	1.058 <i>0.042</i>
# SK095F-045-SK-CZ	3/8-24 UNF (9.525mm)	44.5 <i>1.752</i>	Zinc Plated Steel	19.8 <i>0.780</i>	5.9 <i>0.232</i>	Not Specified	5.56 (7/32)	1.058 <i>0.042</i>
# SK095F-051-SK-CZ	3/8-24 UNF (9.525mm)	50.8 <i>2.000</i>	Zinc Plated Steel	19.8 <i>0.780</i>	5.9 <i>0.232</i>	Not Specified	5.56 (7/32)	1.058 <i>0.042</i>
# SK095F-064-SK-CZ	3/8-24 UNF (9.525mm)	63.5 <i>2.500</i>	Zinc Plated Steel	19.8 <i>0.780</i>	5.9 <i>0.232</i>	Not Specified	5.56 (7/32)	1.058 <i>0.042</i>
# SK095F-076-SK-CZ	3/8-24 UNF (9.525mm)	76.2 <i>3.000</i>	Zinc Plated Steel	19.8 <i>0.780</i>	5.9 <i>0.232</i>	Not Specified	5.56 (7/32)	1.058 <i>0.042</i>

Indicates item not stocked at time of printing - Please enquire for lead time

Page 31 of 60

E&OE Pricing and all details subject to change without notice - Copyright Miniature Bearings Australia Pty Ltd

MBA Size Listings are a guide to sizes only and must not be solely relied on for critical design information.

Screws - Countersunk - Socket - Steel - Zinc Plated

Part Number	Thread Size (C)	Length (L) mm	Material	Max Head Diameter mm	Max Head Height mm	Approx Thread Length (l) mm	Hex Key (s) mm	Pitch mm
		<i>inches</i>		<i>inches</i>	<i>inches</i>	<i>inches</i>	<i>inches</i>	<i>inches</i>
# SK100M-012-SK-CZ	M10x1.5 (10mm Standard)	12	Zinc Plated Steel	20.0	5.5	26	6.00	1.500
		<i>0.472</i>		<i>0.787</i>	<i>0.217</i>	<i>1.024</i>	<i>0.236</i>	<i>0.059</i>
# SK100M-016-SK-CZ	M10x1.5 (10mm Standard)	16	Zinc Plated Steel	20.0	5.5	26	6.00	1.500
		<i>0.630</i>		<i>0.787</i>	<i>0.217</i>	<i>1.024</i>	<i>0.236</i>	<i>0.059</i>
# SK100M-020-SK-CZ	M10x1.5 (10mm Standard)	20	Zinc Plated Steel	20.0	5.5	26	6.00	1.500
		<i>0.787</i>		<i>0.787</i>	<i>0.217</i>	<i>1.024</i>	<i>0.236</i>	<i>0.059</i>
# SK100M-025-SK-CZ	M10x1.5 (10mm Standard)	25	Zinc Plated Steel	20.0	5.5	26	6.00	1.500
		<i>0.984</i>		<i>0.787</i>	<i>0.217</i>	<i>1.024</i>	<i>0.236</i>	<i>0.059</i>
# SK100M-030-SK-CZ	M10x1.5 (10mm Standard)	30	Zinc Plated Steel	20.0	5.5	26	6.00	1.500
		<i>1.181</i>		<i>0.787</i>	<i>0.217</i>	<i>1.024</i>	<i>0.236</i>	<i>0.059</i>
# SK100M-035-SK-CZ	M10x1.5 (10mm Standard)	35	Zinc Plated Steel	20.0	5.5	26	6.00	1.500
		<i>1.378</i>		<i>0.787</i>	<i>0.217</i>	<i>1.024</i>	<i>0.236</i>	<i>0.059</i>
# SK100M-040-SK-CZ	M10x1.5 (10mm Standard)	40	Zinc Plated Steel	20.0	5.5	26	6.00	1.500
		<i>1.575</i>		<i>0.787</i>	<i>0.217</i>	<i>1.024</i>	<i>0.236</i>	<i>0.059</i>
# SK100M-045-SK-CZ	M10x1.5 (10mm Standard)	45	Zinc Plated Steel	20.0	5.5	26	6.00	1.500
		<i>1.772</i>		<i>0.787</i>	<i>0.217</i>	<i>1.024</i>	<i>0.236</i>	<i>0.059</i>

Indicates item not stocked at time of printing - Please enquire for lead time

Page 32 of 60

E&OE Pricing and all details subject to change without notice - Copyright Miniature Bearings Australia Pty Ltd

MBA Size Listings are a guide to sizes only and must not be solely relied on for critical design information.

Screws - Countersunk - Socket - Steel - Zinc Plated

Part Number	Thread Size (C)	Length (L) mm	Material	Max Head Diameter mm	Max Head Height mm	Approx Thread Length (l) mm	Hex Key (s) mm	Pitch mm
		<i>inches</i>		<i>inches</i>	<i>inches</i>	<i>inches</i>	<i>inches</i>	<i>inches</i>
# SK100M-050-SK-CZ	M10x1.5 (10mm Standard)	50	Zinc Plated Steel	20.0	5.5	26	6.00	1.500
		<i>1.969</i>		<i>0.787</i>	<i>0.217</i>	<i>1.024</i>	<i>0.236</i>	<i>0.059</i>
# SK100M-055-SK-CZ	M10x1.5 (10mm Standard)	55	Zinc Plated Steel	20.0	5.5	26	6.00	1.500
		<i>2.165</i>		<i>0.787</i>	<i>0.217</i>	<i>1.024</i>	<i>0.236</i>	<i>0.059</i>
# SK100M-060-SK-CZ	M10x1.5 (10mm Standard)	60	Zinc Plated Steel	20.0	5.5	26	6.00	1.500
		<i>2.362</i>		<i>0.787</i>	<i>0.217</i>	<i>1.024</i>	<i>0.236</i>	<i>0.059</i>
# SK100M-070-SK-CZ	M10x1.5 (10mm Standard)	70	Zinc Plated Steel	20.0	5.5	26	6.00	1.500
		<i>2.756</i>		<i>0.787</i>	<i>0.217</i>	<i>1.024</i>	<i>0.236</i>	<i>0.059</i>
# SK100M-075-SK-CZ	M10x1.5 (10mm Standard)	75	Zinc Plated Steel	20.0	5.5	26	6.00	1.500
		<i>2.953</i>		<i>0.787</i>	<i>0.217</i>	<i>1.024</i>	<i>0.236</i>	<i>0.059</i>
# SK100M-080-SK-CZ	M10x1.5 (10mm Standard)	80	Zinc Plated Steel	20.0	5.5	26	6.00	1.500
		<i>3.150</i>		<i>0.787</i>	<i>0.217</i>	<i>1.024</i>	<i>0.236</i>	<i>0.059</i>
# SK100M-090-SK-CZ	M10x1.5 (10mm Standard)	90	Zinc Plated Steel	20.0	5.5	26	6.00	1.500
		<i>3.543</i>		<i>0.787</i>	<i>0.217</i>	<i>1.024</i>	<i>0.236</i>	<i>0.059</i>
# SK100M-100-SK-CZ	M10x1.5 (10mm Standard)	100	Zinc Plated Steel	20.0	5.5	26	6.00	1.500
		<i>3.937</i>		<i>0.787</i>	<i>0.217</i>	<i>1.024</i>	<i>0.236</i>	<i>0.059</i>

Indicates item not stocked at time of printing - Please enquire for lead time

Page 33 of 60

E&OE Pricing and all details subject to change without notice - Copyright Miniature Bearings Australia Pty Ltd

MBA Size Listings are a guide to sizes only and must not be solely relied on for critical design information.

Screws - Countersunk - Socket - Steel - Zinc Plated

Part Number	Thread Size (C)	Length (L) mm	Material	Max Head Diameter mm	Max Head Height mm	Approx Thread Length (l) mm	Hex Key (s) mm	Pitch mm
		<i>inches</i>		<i>inches</i>	<i>inches</i>	<i>inches</i>	<i>inches</i>	<i>inches</i>
# SK100M-110-SK-CZ	M10x1.5 (10mm Standard)	110	Zinc Plated Steel	20.0	5.5	26	6.00	1.500
		<i>4.331</i>		<i>0.787</i>	<i>0.217</i>	<i>1.024</i>	<i>0.236</i>	<i>0.059</i>
# SK100M-120-SK-CZ	M10x1.5 (10mm Standard)	120	Zinc Plated Steel	20.0	5.5	26	6.00	1.500
		<i>4.724</i>		<i>0.787</i>	<i>0.217</i>	<i>1.024</i>	<i>0.236</i>	<i>0.059</i>
# SK100M-130-SK-CZ	M10x1.5 (10mm Standard)	130	Zinc Plated Steel	20.0	5.5	32	6.00	1.500
		<i>5.118</i>		<i>0.787</i>	<i>0.217</i>	<i>1.260</i>	<i>0.236</i>	<i>0.059</i>
# SK111C-019-SK-CZ	7/16-14 UNC (11.113mm)	19.1	Zinc Plated Steel	21.4	5.9	Not Specified	6.53 (1/4)	1.814
		<i>0.752</i>		<i>0.843</i>	<i>0.232</i>			<i>0.071</i>
# SK111C-025-SK-CZ	7/16-14 UNC (11.113mm)	25.4	Zinc Plated Steel	21.4	5.9	Not Specified	6.53 (1/4)	1.814
		<i>1.000</i>		<i>0.843</i>	<i>0.232</i>			<i>0.071</i>
# SK111C-029-SK-CZ	7/16-14 UNC (11.113mm)	28.6	Zinc Plated Steel	21.4	5.9	Not Specified	6.53 (1/4)	1.814
		<i>1.126</i>		<i>0.843</i>	<i>0.232</i>			<i>0.071</i>
# SK111C-032-SK-CZ	7/16-14 UNC (11.113mm)	31.8	Zinc Plated Steel	21.4	5.9	Not Specified	6.53 (1/4)	1.814
		<i>1.252</i>		<i>0.843</i>	<i>0.232</i>			<i>0.071</i>
# SK111C-038-SK-CZ	7/16-14 UNC (11.113mm)	38.1	Zinc Plated Steel	21.4	5.9	Not Specified	6.53 (1/4)	1.814
		<i>1.500</i>		<i>0.843</i>	<i>0.232</i>			<i>0.071</i>

Indicates item not stocked at time of printing - Please enquire for lead time

Page 34 of 60

E&OE Pricing and all details subject to change without notice - Copyright Miniature Bearings Australia Pty Ltd

MBA Size Listings are a guide to sizes only and must not be solely relied on for critical design information.

Screws - Countersunk - Socket - Steel - Zinc Plated

Part Number	Thread Size (C)	Length (L) mm	Material	Max Head Diameter mm	Max Head Height mm	Approx Thread Length (l) mm	Hex Key (s) mm	Pitch mm
		<i>inches</i>		<i>inches</i>	<i>inches</i>	<i>inches</i>	<i>inches</i>	<i>inches</i>
# SK111C-045-SK-CZ	7/16-14 UNC (11.113mm)	44.5 <i>1.752</i>	Zinc Plated Steel	21.4 <i>0.843</i>	5.9 <i>0.232</i>	Not Specified	6.53 (1/4)	1.814 <i>0.071</i>
# SK111C-051-SK-CZ	7/16-14 UNC (11.113mm)	50.8 <i>2.000</i>	Zinc Plated Steel	21.4 <i>0.843</i>	5.9 <i>0.232</i>	Not Specified	6.53 (1/4)	1.814 <i>0.071</i>
# SK111C-057-SK-CZ	7/16-14 UNC (11.113mm)	57.2 <i>2.252</i>	Zinc Plated Steel	21.4 <i>0.843</i>	5.9 <i>0.232</i>	Not Specified	6.53 (1/4)	1.814 <i>0.071</i>
# SK111C-064-SK-CZ	7/16-14 UNC (11.113mm)	63.5 <i>2.500</i>	Zinc Plated Steel	21.4 <i>0.843</i>	5.9 <i>0.232</i>	Not Specified	6.53 (1/4)	1.814 <i>0.071</i>
# SK111C-076-SK-CZ	7/16-14 UNC (11.113mm)	76.2 <i>3.000</i>	Zinc Plated Steel	21.4 <i>0.843</i>	5.9 <i>0.232</i>	Not Specified	6.53 (1/4)	1.814 <i>0.071</i>
# SK111C-089-SK-CZ	7/16-14 UNC (11.113mm)	88.9 <i>3.500</i>	Zinc Plated Steel	21.4 <i>0.843</i>	5.9 <i>0.232</i>	Not Specified	6.53 (1/4)	1.814 <i>0.071</i>
# SK111C-102-SK-CZ	7/16-14 UNC (11.113mm)	101.6 <i>4.000</i>	Zinc Plated Steel	21.4 <i>0.843</i>	5.9 <i>0.232</i>	Not Specified	6.53 (1/4)	1.814 <i>0.071</i>
# SK111F-019-SK-CZ	7/16-20 UNF (11.113mm)	19.1 <i>0.752</i>	Zinc Plated Steel	21.4 <i>0.843</i>	5.9 <i>0.232</i>	Not Specified	6.53 (1/4)	1.270 <i>0.050</i>

Indicates item not stocked at time of printing - Please enquire for lead time

Page 35 of 60

E&OE Pricing and all details subject to change without notice - Copyright Miniature Bearings Australia Pty Ltd

MBA Size Listings are a guide to sizes only and must not be solely relied on for critical design information.

Screws - Countersunk - Socket - Steel - Zinc Plated

Part Number	Thread Size (C)	Length (L) mm	Material	Max Head Diameter mm	Max Head Height mm	Approx Thread Length (l) mm	Hex Key (s) mm	Pitch mm
		<i>inches</i>		<i>inches</i>	<i>inches</i>	<i>inches</i>	<i>inches</i>	<i>inches</i>
# SK111F-025-SK-CZ	7/16-20 UNF (11.113mm)	25.4 <i>1.000</i>	Zinc Plated Steel	21.4 <i>0.843</i>	5.9 <i>0.232</i>	Not Specified	6.53 (1/4)	1.270 <i>0.050</i>
# SK111F-032-SK-CZ	7/16-20 UNF (11.113mm)	31.8 <i>1.252</i>	Zinc Plated Steel	21.4 <i>0.843</i>	5.9 <i>0.232</i>	Not Specified	6.53 (1/4)	1.270 <i>0.050</i>
# SK111F-038-SK-CZ	7/16-20 UNF (11.113mm)	38.1 <i>1.500</i>	Zinc Plated Steel	21.4 <i>0.843</i>	5.9 <i>0.232</i>	Not Specified	6.53 (1/4)	1.270 <i>0.050</i>
# SK111F-045-SK-CZ	7/16-20 UNF (11.113mm)	44.5 <i>1.752</i>	Zinc Plated Steel	21.4 <i>0.843</i>	5.9 <i>0.232</i>	Not Specified	6.53 (1/4)	1.270 <i>0.050</i>
# SK111F-051-SK-CZ	7/16-20 UNF (11.113mm)	50.8 <i>2.000</i>	Zinc Plated Steel	21.4 <i>0.843</i>	5.9 <i>0.232</i>	Not Specified	6.53 (1/4)	1.270 <i>0.050</i>
# SK111F-064-SK-CZ	7/16-20 UNF (11.113mm)	63.5 <i>2.500</i>	Zinc Plated Steel	21.4 <i>0.843</i>	5.9 <i>0.232</i>	Not Specified	6.53 (1/4)	1.270 <i>0.050</i>
# SK111F-076-SK-CZ	7/16-20 UNF (11.113mm)	76.2 <i>3.000</i>	Zinc Plated Steel	21.4 <i>0.843</i>	5.9 <i>0.232</i>	Not Specified	6.53 (1/4)	1.270 <i>0.050</i>
# SK120M-020-SK-CZ	M12x1.75 (12mm Standard)	20 <i>0.787</i>	Zinc Plated Steel	24.0 <i>0.945</i>	6.5 <i>0.256</i>	30 <i>1.181</i>	8.00 <i>0.315</i>	1.750 <i>0.069</i>

Indicates item not stocked at time of printing - Please enquire for lead time

Page 36 of 60

E&OE Pricing and all details subject to change without notice - Copyright Miniature Bearings Australia Pty Ltd

MBA Size Listings are a guide to sizes only and must not be solely relied on for critical design information.

Screws - Countersunk - Socket - Steel - Zinc Plated

Part Number	Thread Size (C)	Length (L) mm	Material	Max Head Diameter mm	Max Head Height mm	Approx Thread Length (l) mm	Hex Key (s) mm	Pitch mm
		<i>inches</i>		<i>inches</i>	<i>inches</i>	<i>inches</i>	<i>inches</i>	<i>inches</i>
# SK120M-025-SK-CZ	M12x1.75 (12mm Standard)	25	Zinc Plated Steel	24.0	6.5	30	8.00	1.750
		<i>0.984</i>		<i>0.945</i>	<i>0.256</i>	<i>1.181</i>	<i>0.315</i>	<i>0.069</i>
# SK120M-030-SK-CZ	M12x1.75 (12mm Standard)	30	Zinc Plated Steel	24.0	6.5	30	8.00	1.750
		<i>1.181</i>		<i>0.945</i>	<i>0.256</i>	<i>1.181</i>	<i>0.315</i>	<i>0.069</i>
# SK120M-035-SK-CZ	M12x1.75 (12mm Standard)	35	Zinc Plated Steel	24.0	6.5	30	8.00	1.750
		<i>1.378</i>		<i>0.945</i>	<i>0.256</i>	<i>1.181</i>	<i>0.315</i>	<i>0.069</i>
# SK120M-040-SK-CZ	M12x1.75 (12mm Standard)	40	Zinc Plated Steel	24.0	6.5	30	8.00	1.750
		<i>1.575</i>		<i>0.945</i>	<i>0.256</i>	<i>1.181</i>	<i>0.315</i>	<i>0.069</i>
# SK120M-045-SK-CZ	M12x1.75 (12mm Standard)	45	Zinc Plated Steel	24.0	6.5	30	8.00	1.750
		<i>1.772</i>		<i>0.945</i>	<i>0.256</i>	<i>1.181</i>	<i>0.315</i>	<i>0.069</i>
# SK120M-050-SK-CZ	M12x1.75 (12mm Standard)	50	Zinc Plated Steel	24.0	6.5	30	8.00	1.750
		<i>1.969</i>		<i>0.945</i>	<i>0.256</i>	<i>1.181</i>	<i>0.315</i>	<i>0.069</i>
# SK120M-055-SK-CZ	M12x1.75 (12mm Standard)	55	Zinc Plated Steel	24.0	6.5	30	8.00	1.750
		<i>2.165</i>		<i>0.945</i>	<i>0.256</i>	<i>1.181</i>	<i>0.315</i>	<i>0.069</i>
# SK120M-060-SK-CZ	M12x1.75 (12mm Standard)	60	Zinc Plated Steel	24.0	6.5	30	8.00	1.750
		<i>2.362</i>		<i>0.945</i>	<i>0.256</i>	<i>1.181</i>	<i>0.315</i>	<i>0.069</i>

Indicates item not stocked at time of printing - Please enquire for lead time

Page 37 of 60

E&OE Pricing and all details subject to change without notice - Copyright Miniature Bearings Australia Pty Ltd

MBA Size Listings are a guide to sizes only and must not be solely relied on for critical design information.

Screws - Countersunk - Socket - Steel - Zinc Plated

Part Number	Thread Size (C)	Length (L) mm	Material	Max Head Diameter mm	Max Head Height mm	Approx Thread Length (l) mm	Hex Key (s) mm	Pitch mm
		<i>inches</i>		<i>inches</i>	<i>inches</i>	<i>inches</i>	<i>inches</i>	<i>inches</i>
# SK120M-070-SK-CZ	M12x1.75 (12mm Standard)	70	Zinc Plated Steel	24.0	6.5	30	8.00	1.750
		<i>2.756</i>		<i>0.945</i>	<i>0.256</i>	<i>1.181</i>	<i>0.315</i>	<i>0.069</i>
# SK120M-080-SK-CZ	M12x1.75 (12mm Standard)	80	Zinc Plated Steel	24.0	6.5	30	8.00	1.750
		<i>3.150</i>		<i>0.945</i>	<i>0.256</i>	<i>1.181</i>	<i>0.315</i>	<i>0.069</i>
# SK120M-090-SK-CZ	M12x1.75 (12mm Standard)	90	Zinc Plated Steel	24.0	6.5	30	8.00	1.750
		<i>3.543</i>		<i>0.945</i>	<i>0.256</i>	<i>1.181</i>	<i>0.315</i>	<i>0.069</i>
# SK120M-100-SK-CZ	M12x1.75 (12mm Standard)	100	Zinc Plated Steel	24.0	6.5	30	8.00	1.750
		<i>3.937</i>		<i>0.945</i>	<i>0.256</i>	<i>1.181</i>	<i>0.315</i>	<i>0.069</i>
# SK120M-110-SK-CZ	M12x1.75 (12mm Standard)	110	Zinc Plated Steel	24.0	6.5	30	8.00	1.750
		<i>4.331</i>		<i>0.945</i>	<i>0.256</i>	<i>1.181</i>	<i>0.315</i>	<i>0.069</i>
# SK120M-120-SK-CZ	M12x1.75 (12mm Standard)	120	Zinc Plated Steel	24.0	6.5	30	8.00	1.750
		<i>4.724</i>		<i>0.945</i>	<i>0.256</i>	<i>1.181</i>	<i>0.315</i>	<i>0.069</i>
# SK120M-130-SK-CZ	M12x1.75 (12mm Standard)	130	Zinc Plated Steel	24.0	6.5	36	8.00	1.750
		<i>5.118</i>		<i>0.945</i>	<i>0.256</i>	<i>1.417</i>	<i>0.315</i>	<i>0.069</i>
# SK120M-140-SK-CZ	M12x1.75 (12mm Standard)	140	Zinc Plated Steel	24.0	6.5	36	8.00	1.750
		<i>5.512</i>		<i>0.945</i>	<i>0.256</i>	<i>1.417</i>	<i>0.315</i>	<i>0.069</i>

Indicates item not stocked at time of printing - Please enquire for lead time

Page 38 of 60

E&OE Pricing and all details subject to change without notice - Copyright Miniature Bearings Australia Pty Ltd

MBA Size Listings are a guide to sizes only and must not be solely relied on for critical design information.

Screws - Countersunk - Socket - Steel - Zinc Plated

Part Number	Thread Size (C)	Length (L) mm	Material	Max Head Diameter mm	Max Head Height mm	Approx Thread Length (l) mm	Hex Key (s) mm	Pitch mm
		<i>inches</i>		<i>inches</i>	<i>inches</i>	<i>inches</i>	<i>inches</i>	<i>inches</i>
# SK120M-150-SK-CZ	M12x1.75 (12mm Standard)	150 <i>5.906</i>	Zinc Plated Steel	24.0 <i>0.945</i>	6.5 <i>0.256</i>	36 <i>1.417</i>	8.00 <i>0.315</i>	1.750 <i>0.069</i>
# SK120M-180-SK-CZ	M12x1.75 (12mm Standard)	180 <i>7.087</i>	Zinc Plated Steel	24.0 <i>0.945</i>	6.5 <i>0.256</i>	36 <i>1.417</i>	8.00 <i>0.315</i>	1.750 <i>0.069</i>
# SK120M-200-SK-CZ	M12x1.75 (12mm Standard)	200 <i>7.874</i>	Zinc Plated Steel	24.0 <i>0.945</i>	6.5 <i>0.256</i>	36 <i>1.417</i>	8.00 <i>0.315</i>	1.750 <i>0.069</i>
# SK120M-220-SK-CZ	M12x1.75 (12mm Standard)	220 <i>8.661</i>	Zinc Plated Steel	24.0 <i>0.945</i>	6.5 <i>0.256</i>	36 <i>1.417</i>	8.00 <i>0.315</i>	1.750 <i>0.069</i>
# SK120M-250-SK-CZ	M12x1.75 (12mm Standard)	250 <i>9.843</i>	Zinc Plated Steel	24.0 <i>0.945</i>	6.5 <i>0.256</i>	36 <i>1.417</i>	8.00 <i>0.315</i>	1.750 <i>0.069</i>
# SK127C-019-SK-CZ	1/2-13 UNC (12.7mm)	19.1 <i>0.752</i>	Zinc Plated Steel	23.8 <i>0.937</i>	6.4 <i>0.252</i>	Not Specified	7.94 (5/16)	1.954 <i>0.077</i>
# SK127C-025-SK-CZ	1/2-13 UNC (12.7mm)	25.4 <i>1.000</i>	Zinc Plated Steel	23.8 <i>0.937</i>	6.4 <i>0.252</i>	Not Specified	7.94 (5/16)	1.954 <i>0.077</i>
# SK127C-032-SK-CZ	1/2-13 UNC (12.7mm)	31.8 <i>1.252</i>	Zinc Plated Steel	23.8 <i>0.937</i>	6.4 <i>0.252</i>	Not Specified	7.94 (5/16)	1.954 <i>0.077</i>

Indicates item not stocked at time of printing - Please enquire for lead time

Page 39 of 60

E&OE Pricing and all details subject to change without notice - Copyright Miniature Bearings Australia Pty Ltd
MBA Size Listings are a guide to sizes only and must not be solely relied on for critical design information.

Screws - Countersunk - Socket - Steel - Zinc Plated

Part Number	Thread Size (C)	Length (L) mm	Material	Max Head Diameter mm	Max Head Height mm	Approx Thread Length (l) mm	Hex Key (s) mm	Pitch mm
		<i>inches</i>		<i>inches</i>	<i>inches</i>	<i>inches</i>	<i>inches</i>	<i>inches</i>
# SK127C-038-SK-CZ	1/2-13 UNC (12.7mm)	38.1 <i>1.500</i>	Zinc Plated Steel	23.8 <i>0.937</i>	6.4 <i>0.252</i>	Not Specified	7.94 (5/16)	1.954 <i>0.077</i>
# SK127C-045-SK-CZ	1/2-13 UNC (12.7mm)	44.5 <i>1.752</i>	Zinc Plated Steel	23.8 <i>0.937</i>	6.4 <i>0.252</i>	Not Specified	7.94 (5/16)	1.954 <i>0.077</i>
# SK127C-051-SK-CZ	1/2-13 UNC (12.7mm)	50.8 <i>2.000</i>	Zinc Plated Steel	23.8 <i>0.937</i>	6.4 <i>0.252</i>	Not Specified	7.94 (5/16)	1.954 <i>0.077</i>
# SK127C-057-SK-CZ	1/2-13 UNC (12.7mm)	57.2 <i>2.252</i>	Zinc Plated Steel	23.8 <i>0.937</i>	6.4 <i>0.252</i>	Not Specified	7.94 (5/16)	1.954 <i>0.077</i>
# SK127C-064-SK-CZ	1/2-13 UNC (12.7mm)	63.5 <i>2.500</i>	Zinc Plated Steel	23.8 <i>0.937</i>	6.4 <i>0.252</i>	Not Specified	7.94 (5/16)	1.954 <i>0.077</i>
# SK127C-076-SK-CZ	1/2-13 UNC (12.7mm)	76.2 <i>3.000</i>	Zinc Plated Steel	23.8 <i>0.937</i>	6.4 <i>0.252</i>	Not Specified	7.94 (5/16)	1.954 <i>0.077</i>
# SK127C-089-SK-CZ	1/2-13 UNC (12.7mm)	88.9 <i>3.500</i>	Zinc Plated Steel	23.8 <i>0.937</i>	6.4 <i>0.252</i>	Not Specified	7.94 (5/16)	1.954 <i>0.077</i>
# SK127C-102-SK-CZ	1/2-13 UNC (12.7mm)	101.6 <i>4.000</i>	Zinc Plated Steel	23.8 <i>0.937</i>	6.4 <i>0.252</i>	Not Specified	7.94 (5/16)	1.954 <i>0.077</i>

Indicates item not stocked at time of printing - Please enquire for lead time

Page 40 of 60

E&OE Pricing and all details subject to change without notice - Copyright Miniature Bearings Australia Pty Ltd

MBA Size Listings are a guide to sizes only and must not be solely relied on for critical design information.

Screws - Countersunk - Socket - Steel - Zinc Plated

Part Number	Thread Size (C)	Length (L) mm	Material	Max Head Diameter mm	Max Head Height mm	Approx Thread Length (l) mm	Hex Key (s) mm	Pitch mm
		<i>inches</i>		<i>inches</i>	<i>inches</i>	<i>inches</i>	<i>inches</i>	<i>inches</i>
# SK127C-127-SK-CZ	1/2-13 UNC (12.7mm)	127 <i>5.000</i>	Zinc Plated Steel	23.8 <i>0.937</i>	6.4 <i>0.252</i>	Not Specified	7.94 (5/16)	1.954 <i>0.077</i>
# SK127C-152-SK-CZ	1/2-13 UNC (12.7mm)	152.4 <i>6.000</i>	Zinc Plated Steel	23.8 <i>0.937</i>	6.4 <i>0.252</i>	Not Specified	7.94 (5/16)	1.954 <i>0.077</i>
# SK127W-016-SK-CZ	1/2-12 BSW (12.7mm)	15.9 <i>0.626</i>	Zinc Plated Steel	23.8 <i>0.937</i>	6.4 <i>0.252</i>	Not Specified	7.94 (5/16)	2.117 <i>0.083</i>
# SK127W-019-SK-CZ	1/2-12 BSW (12.7mm)	19.1 <i>0.752</i>	Zinc Plated Steel	23.8 <i>0.937</i>	6.4 <i>0.252</i>	Not Specified	7.94 (5/16)	2.117 <i>0.083</i>
# SK127W-025-SK-CZ	1/2-12 BSW (12.7mm)	25.4 <i>1.000</i>	Zinc Plated Steel	23.8 <i>0.937</i>	6.4 <i>0.252</i>	Not Specified	7.94 (5/16)	2.117 <i>0.083</i>
# SK127W-032-SK-CZ	1/2-12 BSW (12.7mm)	31.8 <i>1.252</i>	Zinc Plated Steel	23.8 <i>0.937</i>	6.4 <i>0.252</i>	Not Specified	7.94 (5/16)	2.117 <i>0.083</i>
# SK127W-038-SK-CZ	1/2-12 BSW (12.7mm)	38.1 <i>1.500</i>	Zinc Plated Steel	23.8 <i>0.937</i>	6.4 <i>0.252</i>	Not Specified	7.94 (5/16)	2.117 <i>0.083</i>
# SK127W-045-SK-CZ	1/2-12 BSW (12.7mm)	44.5 <i>1.752</i>	Zinc Plated Steel	23.8 <i>0.937</i>	6.4 <i>0.252</i>	Not Specified	7.94 (5/16)	2.117 <i>0.083</i>

Indicates item not stocked at time of printing - Please enquire for lead time

Page 41 of 60

E&OE Pricing and all details subject to change without notice - Copyright Miniature Bearings Australia Pty Ltd

MBA Size Listings are a guide to sizes only and must not be solely relied on for critical design information.

Screws - Countersunk - Socket - Steel - Zinc Plated

Part Number	Thread Size (C)	Length (L) mm	Material	Max Head Diameter mm	Max Head Height mm	Approx Thread Length (l) mm	Hex Key (s) mm	Pitch mm
		<i>inches</i>		<i>inches</i>	<i>inches</i>	<i>inches</i>	<i>inches</i>	<i>inches</i>
# SK127W-051-SK-CZ	1/2-12 BSW (12.7mm)	50.8 <i>2.000</i>	Zinc Plated Steel	23.8 <i>0.937</i>	6.4 <i>0.252</i>	Not Specified	7.94 (5/16)	2.117 <i>0.083</i>
# SK127W-057-SK-CZ	1/2-12 BSW (12.7mm)	57.2 <i>2.252</i>	Zinc Plated Steel	23.8 <i>0.937</i>	6.4 <i>0.252</i>	Not Specified	7.94 (5/16)	2.117 <i>0.083</i>
# SK127W-064-SK-CZ	1/2-12 BSW (12.7mm)	63.5 <i>2.500</i>	Zinc Plated Steel	23.8 <i>0.937</i>	6.4 <i>0.252</i>	Not Specified	7.94 (5/16)	2.117 <i>0.083</i>
# SK127W-076-SK-CZ	1/2-12 BSW (12.7mm)	76.2 <i>3.000</i>	Zinc Plated Steel	23.8 <i>0.937</i>	6.4 <i>0.252</i>	Not Specified	7.94 (5/16)	2.117 <i>0.083</i>
# SK127W-089-SK-CZ	1/2-12 BSW (12.7mm)	88.9 <i>3.500</i>	Zinc Plated Steel	23.8 <i>0.937</i>	6.4 <i>0.252</i>	Not Specified	7.94 (5/16)	2.117 <i>0.083</i>
# SK127W-102-SK-CZ	1/2-12 BSW (12.7mm)	101.6 <i>4.000</i>	Zinc Plated Steel	23.8 <i>0.937</i>	6.4 <i>0.252</i>	Not Specified	7.94 (5/16)	2.117 <i>0.083</i>
# SK127F-019-SK-CZ	1/2-20 UNF (12.7mm)	19.1 <i>0.752</i>	Zinc Plated Steel	23.8 <i>0.937</i>	6.4 <i>0.252</i>	Not Specified	7.94 (5/16)	1.270 <i>0.050</i>
# SK127F-025-SK-CZ	1/2-20 UNF (12.7mm)	25.4 <i>1.000</i>	Zinc Plated Steel	23.8 <i>0.937</i>	6.4 <i>0.252</i>	Not Specified	7.94 (5/16)	1.270 <i>0.050</i>

Indicates item not stocked at time of printing - Please enquire for lead time

Page 42 of 60

E&OE Pricing and all details subject to change without notice - Copyright Miniature Bearings Australia Pty Ltd

MBA Size Listings are a guide to sizes only and must not be solely relied on for critical design information.

Screws - Countersunk - Socket - Steel - Zinc Plated

Part Number	Thread Size (C)	Length (L) mm	Material	Max Head Diameter mm	Max Head Height mm	Approx Thread Length (l) mm	Hex Key (s) mm	Pitch mm
		<i>inches</i>		<i>inches</i>	<i>inches</i>	<i>inches</i>	<i>inches</i>	<i>inches</i>
# SK127F-032-SK-CZ	1/2-20 UNF (12.7mm)	31.8	Zinc Plated Steel	23.8	6.4	Not Specified	7.94 (5/16)	1.270
		<i>1.252</i>		<i>0.937</i>	<i>0.252</i>			<i>0.050</i>
# SK127F-038-SK-CZ	1/2-20 UNF (12.7mm)	38.1	Zinc Plated Steel	23.8	6.4	Not Specified	7.94 (5/16)	1.270
		<i>1.500</i>		<i>0.937</i>	<i>0.252</i>			<i>0.050</i>
# SK127F-045-SK-CZ	1/2-20 UNF (12.7mm)	44.5	Zinc Plated Steel	23.8	6.4	Not Specified	7.94 (5/16)	1.270
		<i>1.752</i>		<i>0.937</i>	<i>0.252</i>			<i>0.050</i>
# SK127F-051-SK-CZ	1/2-20 UNF (12.7mm)	50.8	Zinc Plated Steel	23.8	6.4	Not Specified	7.94 (5/16)	1.270
		<i>2.000</i>		<i>0.937</i>	<i>0.252</i>			<i>0.050</i>
# SK127F-064-SK-CZ	1/2-20 UNF (12.7mm)	63.5	Zinc Plated Steel	23.8	6.4	Not Specified	7.94 (5/16)	1.270
		<i>2.500</i>		<i>0.937</i>	<i>0.252</i>			<i>0.050</i>
# SK127F-076-SK-CZ	1/2-20 UNF (12.7mm)	76.2	Zinc Plated Steel	23.8	6.4	Not Specified	7.94 (5/16)	1.270
		<i>3.000</i>		<i>0.937</i>	<i>0.252</i>			<i>0.050</i>
# SK127F-102-SK-CZ	1/2-20 UNF (12.7mm)	101.6	Zinc Plated Steel	23.8	6.4	Not Specified	7.94 (5/16)	1.270
		<i>4.000</i>		<i>0.937</i>	<i>0.252</i>			<i>0.050</i>
# SK140M-025-SK-CZ	M14x2 (14mm Standard)	25	Zinc Plated Steel	27.0	7.0	34	10.00	2.000
		<i>0.984</i>		<i>1.063</i>	<i>0.276</i>	<i>1.339</i>	<i>0.394</i>	<i>0.079</i>

Indicates item not stocked at time of printing - Please enquire for lead time

Page 43 of 60

E&OE Pricing and all details subject to change without notice - Copyright Miniature Bearings Australia Pty Ltd

MBA Size Listings are a guide to sizes only and must not be solely relied on for critical design information.

Screws - Countersunk - Socket - Steel - Zinc Plated

Part Number	Thread Size (C)	Length (L) mm	Material	Max Head Diameter mm	Max Head Height mm	Approx Thread Length (l) mm	Hex Key (s) mm	Pitch mm
		<i>inches</i>		<i>inches</i>	<i>inches</i>	<i>inches</i>	<i>inches</i>	<i>inches</i>
# SK140M-030-SK-CZ	M14x2 (14mm Standard)	30	Zinc Plated Steel	27.0	7.0	34	10.00	2.000
		<i>1.181</i>		<i>1.063</i>	<i>0.276</i>	<i>1.339</i>	<i>0.394</i>	<i>0.079</i>
# SK140M-035-SK-CZ	M14x2 (14mm Standard)	35	Zinc Plated Steel	27.0	7.0	34	10.00	2.000
		<i>1.378</i>		<i>1.063</i>	<i>0.276</i>	<i>1.339</i>	<i>0.394</i>	<i>0.079</i>
# SK140M-040-SK-CZ	M14x2 (14mm Standard)	40	Zinc Plated Steel	27.0	7.0	34	10.00	2.000
		<i>1.575</i>		<i>1.063</i>	<i>0.276</i>	<i>1.339</i>	<i>0.394</i>	<i>0.079</i>
# SK140M-045-SK-CZ	M14x2 (14mm Standard)	45	Zinc Plated Steel	27.0	7.0	34	10.00	2.000
		<i>1.772</i>		<i>1.063</i>	<i>0.276</i>	<i>1.339</i>	<i>0.394</i>	<i>0.079</i>
# SK140M-050-SK-CZ	M14x2 (14mm Standard)	50	Zinc Plated Steel	27.0	7.0	34	10.00	2.000
		<i>1.969</i>		<i>1.063</i>	<i>0.276</i>	<i>1.339</i>	<i>0.394</i>	<i>0.079</i>
# SK140M-055-SK-CZ	M14x2 (14mm Standard)	55	Zinc Plated Steel	27.0	7.0	34	10.00	2.000
		<i>2.165</i>		<i>1.063</i>	<i>0.276</i>	<i>1.339</i>	<i>0.394</i>	<i>0.079</i>
# SK140M-060-SK-CZ	M14x2 (14mm Standard)	60	Zinc Plated Steel	27.0	7.0	34	10.00	2.000
		<i>2.362</i>		<i>1.063</i>	<i>0.276</i>	<i>1.339</i>	<i>0.394</i>	<i>0.079</i>
# SK140M-065-SK-CZ	M14x2 (14mm Standard)	65	Zinc Plated Steel	27.0	7.0	34	10.00	2.000
		<i>2.559</i>		<i>1.063</i>	<i>0.276</i>	<i>1.339</i>	<i>0.394</i>	<i>0.079</i>

Indicates item not stocked at time of printing - Please enquire for lead time

Page 44 of 60

E&OE Pricing and all details subject to change without notice - Copyright Miniature Bearings Australia Pty Ltd

MBA Size Listings are a guide to sizes only and must not be solely relied on for critical design information.

Screws - Countersunk - Socket - Steel - Zinc Plated

Part Number	Thread Size (C)	Length (L) mm	Material	Max Head Diameter mm	Max Head Height mm	Approx Thread Length (l) mm	Hex Key (s) mm	Pitch mm
		<i>inches</i>		<i>inches</i>	<i>inches</i>	<i>inches</i>	<i>inches</i>	<i>inches</i>
# SK140M-070-SK-CZ	M14x2 (14mm Standard)	70	Zinc Plated Steel	27.0	7.0	34	10.00	2.000
		<i>2.756</i>		<i>1.063</i>	<i>0.276</i>	<i>1.339</i>	<i>0.394</i>	<i>0.079</i>
# SK140M-080-SK-CZ	M14x2 (14mm Standard)	80	Zinc Plated Steel	27.0	7.0	34	10.00	2.000
		<i>3.150</i>		<i>1.063</i>	<i>0.276</i>	<i>1.339</i>	<i>0.394</i>	<i>0.079</i>
# SK140M-090-SK-CZ	M14x2 (14mm Standard)	90	Zinc Plated Steel	27.0	7.0	34	10.00	2.000
		<i>3.543</i>		<i>1.063</i>	<i>0.276</i>	<i>1.339</i>	<i>0.394</i>	<i>0.079</i>
# SK140M-100-SK-CZ	M14x2 (14mm Standard)	100	Zinc Plated Steel	27.0	7.0	34	10.00	2.000
		<i>3.937</i>		<i>1.063</i>	<i>0.276</i>	<i>1.339</i>	<i>0.394</i>	<i>0.079</i>
# SK159C-025-SK-CZ	5/8-11 UNC (15.875mm)	25.4	Zinc Plated Steel	30.2	8.2	Not Specified	9.53 (3/8)	2.309
		<i>1.000</i>		<i>1.189</i>	<i>0.323</i>			<i>0.091</i>
# SK159C-032-SK-CZ	5/8-11 UNC (15.875mm)	31.8	Zinc Plated Steel	30.2	8.2	Not Specified	9.53 (3/8)	2.309
		<i>1.252</i>		<i>1.189</i>	<i>0.323</i>			<i>0.091</i>
# SK159C-038-SK-CZ	5/8-11 UNC (15.875mm)	38.1	Zinc Plated Steel	30.2	8.2	Not Specified	9.53 (3/8)	2.309
		<i>1.500</i>		<i>1.189</i>	<i>0.323</i>			<i>0.091</i>
# SK159C-045-SK-CZ	5/8-11 UNC (15.875mm)	44.5	Zinc Plated Steel	30.2	8.2	Not Specified	9.53 (3/8)	2.309
		<i>1.752</i>		<i>1.189</i>	<i>0.323</i>			<i>0.091</i>

Indicates item not stocked at time of printing - Please enquire for lead time

Page 45 of 60

E&OE Pricing and all details subject to change without notice - Copyright Miniature Bearings Australia Pty Ltd

MBA Size Listings are a guide to sizes only and must not be solely relied on for critical design information.

Screws - Countersunk - Socket - Steel - Zinc Plated

Part Number	Thread Size (C)	Length (L) mm	Material	Max Head Diameter mm	Max Head Height mm	Approx Thread Length (l) mm	Hex Key (s) mm	Pitch mm
		<i>inches</i>		<i>inches</i>	<i>inches</i>	<i>inches</i>	<i>inches</i>	<i>inches</i>
# SK159C-051-SK-CZ	5/8-11 UNC (15.875mm)	50.8 <i>2.000</i>	Zinc Plated Steel	30.2 <i>1.189</i>	8.2 <i>0.323</i>	Not Specified	9.53 (3/8)	2.309 <i>0.091</i>
# SK159C-057-SK-CZ	5/8-11 UNC (15.875mm)	57.2 <i>2.252</i>	Zinc Plated Steel	30.2 <i>1.189</i>	8.2 <i>0.323</i>	Not Specified	9.53 (3/8)	2.309 <i>0.091</i>
# SK159C-064-SK-CZ	5/8-11 UNC (15.875mm)	63.5 <i>2.500</i>	Zinc Plated Steel	30.2 <i>1.189</i>	8.2 <i>0.323</i>	Not Specified	9.53 (3/8)	2.309 <i>0.091</i>
# SK159C-076-SK-CZ	5/8-11 UNC (15.875mm)	76.2 <i>3.000</i>	Zinc Plated Steel	30.2 <i>1.189</i>	8.2 <i>0.323</i>	Not Specified	9.53 (3/8)	2.309 <i>0.091</i>
# SK159C-089-SK-CZ	5/8-11 UNC (15.875mm)	88.9 <i>3.500</i>	Zinc Plated Steel	30.2 <i>1.189</i>	8.2 <i>0.323</i>	Not Specified	9.53 (3/8)	2.309 <i>0.091</i>
# SK159C-102-SK-CZ	5/8-11 UNC (15.875mm)	101.6 <i>4.000</i>	Zinc Plated Steel	30.2 <i>1.189</i>	8.2 <i>0.323</i>	Not Specified	9.53 (3/8)	2.309 <i>0.091</i>
# SK159C-114-SK-CZ	5/8-11 UNC (15.875mm)	114.3 <i>4.500</i>	Zinc Plated Steel	30.2 <i>1.189</i>	8.2 <i>0.323</i>	Not Specified	9.53 (3/8)	2.309 <i>0.091</i>
# SK159C-127-SK-CZ	5/8-11 UNC (15.875mm)	127 <i>5.000</i>	Zinc Plated Steel	30.2 <i>1.189</i>	8.2 <i>0.323</i>	Not Specified	9.53 (3/8)	2.309 <i>0.091</i>

Indicates item not stocked at time of printing - Please enquire for lead time

Page 46 of 60

E&OE Pricing and all details subject to change without notice - Copyright Miniature Bearings Australia Pty Ltd

MBA Size Listings are a guide to sizes only and must not be solely relied on for critical design information.

Screws - Countersunk - Socket - Steel - Zinc Plated

Part Number	Thread Size (C)	Length (L) mm	Material	Max Head Diameter mm	Max Head Height mm	Approx Thread Length (l) mm	Hex Key (s) mm	Pitch mm
		<i>inches</i>		<i>inches</i>	<i>inches</i>	<i>inches</i>	<i>inches</i>	<i>inches</i>
# SK159C-152-SK-CZ	5/8-11 UNC (15.875mm)	152.4 <i>6.000</i>	Zinc Plated Steel	30.2 <i>1.189</i>	8.2 <i>0.323</i>	Not Specified	9.53 (3/8)	2.309 <i>0.091</i>
# SK159W-025-SK-CZ	5/8-11 BSW (15.875mm)	25.4 <i>1.000</i>	Zinc Plated Steel	30.2 <i>1.189</i>	8.2 <i>0.323</i>	Not Specified	9.53 (3/8)	2.309 <i>0.091</i>
# SK159W-032-SK-CZ	5/8-11 BSW (15.875mm)	31.8 <i>1.252</i>	Zinc Plated Steel	30.2 <i>1.189</i>	8.2 <i>0.323</i>	Not Specified	9.53 (3/8)	2.309 <i>0.091</i>
# SK159W-038-SK-CZ	5/8-11 BSW (15.875mm)	38.1 <i>1.500</i>	Zinc Plated Steel	30.2 <i>1.189</i>	8.2 <i>0.323</i>	Not Specified	9.53 (3/8)	2.309 <i>0.091</i>
# SK159W-045-SK-CZ	5/8-11 BSW (15.875mm)	44.5 <i>1.752</i>	Zinc Plated Steel	30.2 <i>1.189</i>	8.2 <i>0.323</i>	Not Specified	9.53 (3/8)	2.309 <i>0.091</i>
# SK159W-051-SK-CZ	5/8-11 BSW (15.875mm)	50.8 <i>2.000</i>	Zinc Plated Steel	30.2 <i>1.189</i>	8.2 <i>0.323</i>	Not Specified	9.53 (3/8)	2.309 <i>0.091</i>
# SK159W-064-SK-CZ	5/8-11 BSW (15.875mm)	63.5 <i>2.500</i>	Zinc Plated Steel	30.2 <i>1.189</i>	8.2 <i>0.323</i>	Not Specified	9.53 (3/8)	2.309 <i>0.091</i>
# SK159W-070-SK-CZ	5/8-11 BSW (15.875mm)	69.9 <i>2.752</i>	Zinc Plated Steel	30.2 <i>1.189</i>	8.2 <i>0.323</i>	Not Specified	9.53 (3/8)	2.309 <i>0.091</i>

Indicates item not stocked at time of printing - Please enquire for lead time

Page 47 of 60

E&OE Pricing and all details subject to change without notice - Copyright Miniature Bearings Australia Pty Ltd

MBA Size Listings are a guide to sizes only and must not be solely relied on for critical design information.

Screws - Countersunk - Socket - Steel - Zinc Plated

Part Number	Thread Size (C)	Length (L) mm	Material	Max Head Diameter mm	Max Head Height mm	Approx Thread Length (l) mm	Hex Key (s) mm	Pitch mm
		<i>inches</i>		<i>inches</i>	<i>inches</i>	<i>inches</i>	<i>inches</i>	<i>inches</i>
# SK159W-076-SK-CZ	5/8-11 BSW (15.875mm)	76.2 <i>3.000</i>	Zinc Plated Steel	30.2 <i>1.189</i>	8.2 <i>0.323</i>	Not Specified	9.53 (3/8)	2.309 <i>0.091</i>
# SK159W-089-SK-CZ	5/8-11 BSW (15.875mm)	88.9 <i>3.500</i>	Zinc Plated Steel	30.2 <i>1.189</i>	8.2 <i>0.323</i>	Not Specified	9.53 (3/8)	2.309 <i>0.091</i>
# SK159W-102-SK-CZ	5/8-11 BSW (15.875mm)	101.6 <i>4.000</i>	Zinc Plated Steel	30.2 <i>1.189</i>	8.2 <i>0.323</i>	Not Specified	9.53 (3/8)	2.309 <i>0.091</i>
# SK159W-114-SK-CZ	5/8-11 BSW (15.875mm)	114.3 <i>4.500</i>	Zinc Plated Steel	30.2 <i>1.189</i>	8.2 <i>0.323</i>	Not Specified	9.53 (3/8)	2.309 <i>0.091</i>
# SK159F-025-SK-CZ	5/8-18 UNF (15.875mm)	25.4 <i>1.000</i>	Zinc Plated Steel	30.2 <i>1.189</i>	8.2 <i>0.323</i>	Not Specified	9.53 (3/8)	1.411 <i>0.056</i>
# SK159F-032-SK-CZ	5/8-18 UNF (15.875mm)	31.8 <i>1.252</i>	Zinc Plated Steel	30.2 <i>1.189</i>	8.2 <i>0.323</i>	Not Specified	9.53 (3/8)	1.411 <i>0.056</i>
# SK159F-038-SK-CZ	5/8-18 UNF (15.875mm)	38.1 <i>1.500</i>	Zinc Plated Steel	30.2 <i>1.189</i>	8.2 <i>0.323</i>	Not Specified	9.53 (3/8)	1.411 <i>0.056</i>
# SK159F-045-SK-CZ	5/8-18 UNF (15.875mm)	44.5 <i>1.752</i>	Zinc Plated Steel	30.2 <i>1.189</i>	8.2 <i>0.323</i>	Not Specified	9.53 (3/8)	1.411 <i>0.056</i>

Indicates item not stocked at time of printing - Please enquire for lead time

Page 48 of 60

E&OE Pricing and all details subject to change without notice - Copyright Miniature Bearings Australia Pty Ltd

MBA Size Listings are a guide to sizes only and must not be solely relied on for critical design information.

Screws - Countersunk - Socket - Steel - Zinc Plated

Part Number	Thread Size (C)	Length (L) mm	Material	Max Head Diameter mm	Max Head Height mm	Approx Thread Length (l) mm	Hex Key (s) mm	Pitch mm
		<i>inches</i>		<i>inches</i>	<i>inches</i>	<i>inches</i>	<i>inches</i>	<i>inches</i>
# SK159F-051-SK-CZ	5/8-18 UNF (15.875mm)	50.8 <i>2.000</i>	Zinc Plated Steel	30.2 <i>1.189</i>	8.2 <i>0.323</i>	Not Specified	9.53 (3/8)	1.411 <i>0.056</i>
# SK159F-064-SK-CZ	5/8-18 UNF (15.875mm)	63.5 <i>2.500</i>	Zinc Plated Steel	30.2 <i>1.189</i>	8.2 <i>0.323</i>	Not Specified	9.53 (3/8)	1.411 <i>0.056</i>
# SK159F-070-SK-CZ	5/8-18 UNF (15.875mm)	69.9 <i>2.752</i>	Zinc Plated Steel	30.2 <i>1.189</i>	8.2 <i>0.323</i>	Not Specified	9.53 (3/8)	1.411 <i>0.056</i>
# SK159F-076-SK-CZ	5/8-18 UNF (15.875mm)	76.2 <i>3.000</i>	Zinc Plated Steel	30.2 <i>1.189</i>	8.2 <i>0.323</i>	Not Specified	9.53 (3/8)	1.411 <i>0.056</i>
# SK159F-089-SK-CZ	5/8-18 UNF (15.875mm)	88.9 <i>3.500</i>	Zinc Plated Steel	30.2 <i>1.189</i>	8.2 <i>0.323</i>	Not Specified	9.53 (3/8)	1.411 <i>0.056</i>
# SK159F-102-SK-CZ	5/8-18 UNF (15.875mm)	101.6 <i>4.000</i>	Zinc Plated Steel	30.2 <i>1.189</i>	8.2 <i>0.323</i>	Not Specified	9.53 (3/8)	1.411 <i>0.056</i>
# SK160M-020-SK-CZ	M16x2 (16mm Standard)	20 <i>0.787</i>	Zinc Plated Steel	30.0 <i>1.181</i>	7.5 <i>0.295</i>	38 <i>1.496</i>	10.00 <i>0.394</i>	2.000 <i>0.079</i>
# SK160M-025-SK-CZ	M16x2 (16mm Standard)	25 <i>0.984</i>	Zinc Plated Steel	30.0 <i>1.181</i>	7.5 <i>0.295</i>	38 <i>1.496</i>	10.00 <i>0.394</i>	2.000 <i>0.079</i>

Indicates item not stocked at time of printing - Please enquire for lead time

Page 49 of 60

E&OE Pricing and all details subject to change without notice - Copyright Miniature Bearings Australia Pty Ltd

MBA Size Listings are a guide to sizes only and must not be solely relied on for critical design information.

Screws - Countersunk - Socket - Steel - Zinc Plated

Part Number	Thread Size (C)	Length (L) mm	Material	Max Head Diameter mm	Max Head Height mm	Approx Thread Length (l) mm	Hex Key (s) mm	Pitch mm
		<i>inches</i>		<i>inches</i>	<i>inches</i>	<i>inches</i>	<i>inches</i>	<i>inches</i>
# SK160M-030-SK-CZ	M16x2 (16mm Standard)	30	Zinc Plated Steel	30.0	7.5	38	10.00	2.000
		<i>1.181</i>		<i>1.181</i>	<i>0.295</i>	<i>1.496</i>	<i>0.394</i>	<i>0.079</i>
# SK160M-035-SK-CZ	M16x2 (16mm Standard)	35	Zinc Plated Steel	30.0	7.5	38	10.00	2.000
		<i>1.378</i>		<i>1.181</i>	<i>0.295</i>	<i>1.496</i>	<i>0.394</i>	<i>0.079</i>
# SK160M-040-SK-CZ	M16x2 (16mm Standard)	40	Zinc Plated Steel	30.0	7.5	38	10.00	2.000
		<i>1.575</i>		<i>1.181</i>	<i>0.295</i>	<i>1.496</i>	<i>0.394</i>	<i>0.079</i>
# SK160M-045-SK-CZ	M16x2 (16mm Standard)	45	Zinc Plated Steel	30.0	7.5	38	10.00	2.000
		<i>1.772</i>		<i>1.181</i>	<i>0.295</i>	<i>1.496</i>	<i>0.394</i>	<i>0.079</i>
# SK160M-050-SK-CZ	M16x2 (16mm Standard)	50	Zinc Plated Steel	30.0	7.5	38	10.00	2.000
		<i>1.969</i>		<i>1.181</i>	<i>0.295</i>	<i>1.496</i>	<i>0.394</i>	<i>0.079</i>
# SK160M-055-SK-CZ	M16x2 (16mm Standard)	55	Zinc Plated Steel	30.0	7.5	38	10.00	2.000
		<i>2.165</i>		<i>1.181</i>	<i>0.295</i>	<i>1.496</i>	<i>0.394</i>	<i>0.079</i>
# SK160M-060-SK-CZ	M16x2 (16mm Standard)	60	Zinc Plated Steel	30.0	7.5	38	10.00	2.000
		<i>2.362</i>		<i>1.181</i>	<i>0.295</i>	<i>1.496</i>	<i>0.394</i>	<i>0.079</i>
# SK160M-065-SK-CZ	M16x2 (16mm Standard)	65	Zinc Plated Steel	30.0	7.5	38	10.00	2.000
		<i>2.559</i>		<i>1.181</i>	<i>0.295</i>	<i>1.496</i>	<i>0.394</i>	<i>0.079</i>

Indicates item not stocked at time of printing - Please enquire for lead time

Page 50 of 60

E&OE Pricing and all details subject to change without notice - Copyright Miniature Bearings Australia Pty Ltd

MBA Size Listings are a guide to sizes only and must not be solely relied on for critical design information.

Screws - Countersunk - Socket - Steel - Zinc Plated

Part Number	Thread Size (C)	Length (L) mm	Material	Max Head Diameter mm	Max Head Height mm	Approx Thread Length (l) mm	Hex Key (s) mm	Pitch mm
		<i>inches</i>		<i>inches</i>	<i>inches</i>	<i>inches</i>	<i>inches</i>	<i>inches</i>
# SK160M-070-SK-CZ	M16x2 (16mm Standard)	70	Zinc Plated Steel	30.0	7.5	38	10.00	2.000
		<i>2.756</i>		<i>1.181</i>	<i>0.295</i>	<i>1.496</i>	<i>0.394</i>	<i>0.079</i>
# SK160M-075-SK-CZ	M16x2 (16mm Standard)	75	Zinc Plated Steel	30.0	7.5	38	10.00	2.000
		<i>2.953</i>		<i>1.181</i>	<i>0.295</i>	<i>1.496</i>	<i>0.394</i>	<i>0.079</i>
# SK160M-080-SK-CZ	M16x2 (16mm Standard)	80	Zinc Plated Steel	30.0	7.5	38	10.00	2.000
		<i>3.150</i>		<i>1.181</i>	<i>0.295</i>	<i>1.496</i>	<i>0.394</i>	<i>0.079</i>
# SK160M-090-SK-CZ	M16x2 (16mm Standard)	90	Zinc Plated Steel	30.0	7.5	38	10.00	2.000
		<i>3.543</i>		<i>1.181</i>	<i>0.295</i>	<i>1.496</i>	<i>0.394</i>	<i>0.079</i>
# SK160M-100-SK-CZ	M16x2 (16mm Standard)	100	Zinc Plated Steel	30.0	7.5	38	10.00	2.000
		<i>3.937</i>		<i>1.181</i>	<i>0.295</i>	<i>1.496</i>	<i>0.394</i>	<i>0.079</i>
# SK160M-110-SK-CZ	M16x2 (16mm Standard)	110	Zinc Plated Steel	30.0	7.5	38	10.00	2.000
		<i>4.331</i>		<i>1.181</i>	<i>0.295</i>	<i>1.496</i>	<i>0.394</i>	<i>0.079</i>
# SK160M-120-SK-CZ	M16x2 (16mm Standard)	120	Zinc Plated Steel	30.0	7.5	38	10.00	2.000
		<i>4.724</i>		<i>1.181</i>	<i>0.295</i>	<i>1.496</i>	<i>0.394</i>	<i>0.079</i>
# SK160M-130-SK-CZ	M16x2 (16mm Standard)	130	Zinc Plated Steel	30.0	7.5	44	10.00	2.000
		<i>5.118</i>		<i>1.181</i>	<i>0.295</i>	<i>1.732</i>	<i>0.394</i>	<i>0.079</i>

Indicates item not stocked at time of printing - Please enquire for lead time

Page 51 of 60

E&OE Pricing and all details subject to change without notice - Copyright Miniature Bearings Australia Pty Ltd

MBA Size Listings are a guide to sizes only and must not be solely relied on for critical design information.

Screws - Countersunk - Socket - Steel - Zinc Plated

Part Number	Thread Size (C)	Length (L) mm	Material	Max Head Diameter mm	Max Head Height mm	Approx Thread Length (l) mm	Hex Key (s) mm	Pitch mm
		<i>inches</i>		<i>inches</i>	<i>inches</i>	<i>inches</i>	<i>inches</i>	<i>inches</i>
# SK160M-140-SK-CZ	M16x2 (16mm Standard)	140	Zinc Plated Steel	30.0	7.5	44	10.00	2.000
		<i>5.512</i>		<i>1.181</i>	<i>0.295</i>	<i>1.732</i>	<i>0.394</i>	<i>0.079</i>
# SK160M-150-SK-CZ	M16x2 (16mm Standard)	150	Zinc Plated Steel	30.0	7.5	44	10.00	2.000
		<i>5.906</i>		<i>1.181</i>	<i>0.295</i>	<i>1.732</i>	<i>0.394</i>	<i>0.079</i>
# SK160M-160-SK-CZ	M16x2 (16mm Standard)	160	Zinc Plated Steel	30.0	7.5	44	10.00	2.000
		<i>6.299</i>		<i>1.181</i>	<i>0.295</i>	<i>1.732</i>	<i>0.394</i>	<i>0.079</i>
# SK160M-180-SK-CZ	M16x2 (16mm Standard)	180	Zinc Plated Steel	30.0	7.5	44	10.00	2.000
		<i>7.087</i>		<i>1.181</i>	<i>0.295</i>	<i>1.732</i>	<i>0.394</i>	<i>0.079</i>
# SK160M-200-SK-CZ	M16x2 (16mm Standard)	200	Zinc Plated Steel	30.0	7.5	44	10.00	2.000
		<i>7.874</i>		<i>1.181</i>	<i>0.295</i>	<i>1.732</i>	<i>0.394</i>	<i>0.079</i>
# SK160M-220-SK-CZ	M16x2 (16mm Standard)	220	Zinc Plated Steel	30.0	7.5	44	10.00	2.000
		<i>8.661</i>		<i>1.181</i>	<i>0.295</i>	<i>1.732</i>	<i>0.394</i>	<i>0.079</i>
# SK160M-240-SK-CZ	M16x2 (16mm Standard)	240	Zinc Plated Steel	30.0	7.5	44	10.00	2.000
		<i>9.449</i>		<i>1.181</i>	<i>0.295</i>	<i>1.732</i>	<i>0.394</i>	<i>0.079</i>
# SK191C-032-SK-CZ	3/4-10 UNC (19.05mm)	31.8	Zinc Plated Steel	36.5	10.1	Not Specified	12.7 (1/2)	2.540
		<i>1.252</i>		<i>1.437</i>	<i>0.398</i>			<i>0.100</i>

Indicates item not stocked at time of printing - Please enquire for lead time

Page 52 of 60

E&OE Pricing and all details subject to change without notice - Copyright Miniature Bearings Australia Pty Ltd

MBA Size Listings are a guide to sizes only and must not be solely relied on for critical design information.

Screws - Countersunk - Socket - Steel - Zinc Plated

Part Number	Thread Size (C)	Length (L) mm	Material	Max Head Diameter mm	Max Head Height mm	Approx Thread Length (l) mm	Hex Key (s) mm	Pitch mm
		<i>inches</i>		<i>inches</i>	<i>inches</i>	<i>inches</i>	<i>inches</i>	<i>inches</i>
# SK191C-038-SK-CZ	3/4-10 UNC (19.05mm)	38.1 <i>1.500</i>	Zinc Plated Steel	36.5 <i>1.437</i>	10.1 <i>0.398</i>	Not Specified	12.7 (1/2)	2.540 <i>0.100</i>
# SK191C-045-SK-CZ	3/4-10 UNC (19.05mm)	44.5 <i>1.752</i>	Zinc Plated Steel	36.5 <i>1.437</i>	10.1 <i>0.398</i>	Not Specified	12.7 (1/2)	2.540 <i>0.100</i>
# SK191C-051-SK-CZ	3/4-10 UNC (19.05mm)	50.8 <i>2.000</i>	Zinc Plated Steel	36.5 <i>1.437</i>	10.1 <i>0.398</i>	Not Specified	12.7 (1/2)	2.540 <i>0.100</i>
# SK191C-057-SK-CZ	3/4-10 UNC (19.05mm)	57.2 <i>2.252</i>	Zinc Plated Steel	36.5 <i>1.437</i>	10.1 <i>0.398</i>	Not Specified	12.7 (1/2)	2.540 <i>0.100</i>
# SK191C-064-SK-CZ	3/4-10 UNC (19.05mm)	63.5 <i>2.500</i>	Zinc Plated Steel	36.5 <i>1.437</i>	10.1 <i>0.398</i>	Not Specified	12.7 (1/2)	2.540 <i>0.100</i>
# SK191C-076-SK-CZ	3/4-10 UNC (19.05mm)	76.2 <i>3.000</i>	Zinc Plated Steel	36.5 <i>1.437</i>	10.1 <i>0.398</i>	Not Specified	12.7 (1/2)	2.540 <i>0.100</i>
# SK191C-089-SK-CZ	3/4-10 UNC (19.05mm)	88.9 <i>3.500</i>	Zinc Plated Steel	36.5 <i>1.437</i>	10.1 <i>0.398</i>	Not Specified	12.7 (1/2)	2.540 <i>0.100</i>
# SK191C-102-SK-CZ	3/4-10 UNC (19.05mm)	101.6 <i>4.000</i>	Zinc Plated Steel	36.5 <i>1.437</i>	10.1 <i>0.398</i>	Not Specified	12.7 (1/2)	2.540 <i>0.100</i>

Indicates item not stocked at time of printing - Please enquire for lead time

Page 53 of 60

E&OE Pricing and all details subject to change without notice - Copyright Miniature Bearings Australia Pty Ltd

MBA Size Listings are a guide to sizes only and must not be solely relied on for critical design information.

Screws - Countersunk - Socket - Steel - Zinc Plated

Part Number	Thread Size (C)	Length (L) mm	Material	Max Head Diameter mm	Max Head Height mm	Approx Thread Length (l) mm	Hex Key (s) mm	Pitch mm
		<i>inches</i>		<i>inches</i>	<i>inches</i>	<i>inches</i>	<i>inches</i>	<i>inches</i>
# SK191C-127-SK-CZ	3/4-10 UNC (19.05mm)	127 <i>5.000</i>	Zinc Plated Steel	36.5 <i>1.437</i>	10.1 <i>0.398</i>	Not Specified	12.7 (1/2)	2.540 <i>0.100</i>
# SK191C-152-SK-CZ	3/4-10 UNC (19.05mm)	152.4 <i>6.000</i>	Zinc Plated Steel	36.5 <i>1.437</i>	10.1 <i>0.398</i>	Not Specified	12.7 (1/2)	2.540 <i>0.100</i>
# SK191W-032-SK-CZ	3/4-10 BSW (19.05mm)	31.8 <i>1.252</i>	Zinc Plated Steel	36.5 <i>1.437</i>	10.1 <i>0.398</i>	Not Specified	9.53 (3/8)	2.540 <i>0.100</i>
# SK191W-038-SK-CZ	3/4-10 BSW (19.05mm)	38.1 <i>1.500</i>	Zinc Plated Steel	36.5 <i>1.437</i>	10.1 <i>0.398</i>	Not Specified	9.53 (3/8)	2.540 <i>0.100</i>
# SK191W-045-SK-CZ	3/4-10 BSW (19.05mm)	44.5 <i>1.752</i>	Zinc Plated Steel	36.5 <i>1.437</i>	10.1 <i>0.398</i>	Not Specified	9.53 (3/8)	2.540 <i>0.100</i>
# SK191W-051-SK-CZ	3/4-10 BSW (19.05mm)	50.8 <i>2.000</i>	Zinc Plated Steel	36.5 <i>1.437</i>	10.1 <i>0.398</i>	Not Specified	9.53 (3/8)	2.540 <i>0.100</i>
# SK191W-064-SK-CZ	3/4-10 BSW (19.05mm)	63.5 <i>2.500</i>	Zinc Plated Steel	36.5 <i>1.437</i>	10.1 <i>0.398</i>	Not Specified	9.53 (3/8)	2.540 <i>0.100</i>
# SK191W-076-SK-CZ	3/4-10 BSW (19.05mm)	76.2 <i>3.000</i>	Zinc Plated Steel	36.5 <i>1.437</i>	10.1 <i>0.398</i>	Not Specified	9.53 (3/8)	2.540 <i>0.100</i>

Indicates item not stocked at time of printing - Please enquire for lead time

Page 54 of 60

E&OE Pricing and all details subject to change without notice - Copyright Miniature Bearings Australia Pty Ltd

MBA Size Listings are a guide to sizes only and must not be solely relied on for critical design information.

Screws - Countersunk - Socket - Steel - Zinc Plated

Part Number	Thread Size (C)	Length (L) mm	Material	Max Head Diameter mm	Max Head Height mm	Approx Thread Length (l) mm	Hex Key (s) mm	Pitch mm
		<i>inches</i>		<i>inches</i>	<i>inches</i>	<i>inches</i>	<i>inches</i>	<i>inches</i>
# SK191W-089-SK-CZ	3/4-10 BSW (19.05mm)	88.9 <i>3.500</i>	Zinc Plated Steel	36.5 <i>1.437</i>	10.1 <i>0.398</i>	Not Specified	9.53 (3/8)	2.540 <i>0.100</i>
# SK191W-102-SK-CZ	3/4-10 BSW (19.05mm)	101.6 <i>4.000</i>	Zinc Plated Steel	36.5 <i>1.437</i>	10.1 <i>0.398</i>	Not Specified	9.53 (3/8)	2.540 <i>0.100</i>
# SK191W-114-SK-CZ	3/4-10 BSW (19.05mm)	114.3 <i>4.500</i>	Zinc Plated Steel	36.5 <i>1.437</i>	10.1 <i>0.398</i>	Not Specified	9.53 (3/8)	2.540 <i>0.100</i>
# SK191W-127-SK-CZ	3/4-10 BSW (19.05mm)	127 <i>5.000</i>	Zinc Plated Steel	36.5 <i>1.437</i>	10.1 <i>0.398</i>	Not Specified	9.53 (3/8)	2.540 <i>0.100</i>
# SK200M-035-SK-CZ	M20x2.5 (20mm Standard)	35 <i>1.378</i>	Zinc Plated Steel	36.0 <i>1.417</i>	8.5 <i>0.335</i>	46 <i>1.811</i>	12.00 <i>0.472</i>	2.500 <i>0.098</i>
# SK200M-040-SK-CZ	M20x2.5 (20mm Standard)	40 <i>1.575</i>	Zinc Plated Steel	36.0 <i>1.417</i>	8.5 <i>0.335</i>	46 <i>1.811</i>	12.00 <i>0.472</i>	2.500 <i>0.098</i>
# SK200M-045-SK-CZ	M20x2.5 (20mm Standard)	45 <i>1.772</i>	Zinc Plated Steel	36.0 <i>1.417</i>	8.5 <i>0.335</i>	46 <i>1.811</i>	12.00 <i>0.472</i>	2.500 <i>0.098</i>
# SK200M-050-SK-CZ	M20x2.5 (20mm Standard)	50 <i>1.969</i>	Zinc Plated Steel	36.0 <i>1.417</i>	8.5 <i>0.335</i>	46 <i>1.811</i>	12.00 <i>0.472</i>	2.500 <i>0.098</i>

Indicates item not stocked at time of printing - Please enquire for lead time

Page 55 of 60

E&OE Pricing and all details subject to change without notice - Copyright Miniature Bearings Australia Pty Ltd

MBA Size Listings are a guide to sizes only and must not be solely relied on for critical design information.

Screws - Countersunk - Socket - Steel - Zinc Plated

Part Number	Thread Size (C)	Length (L) mm	Material	Max Head Diameter mm	Max Head Height mm	Approx Thread Length (l) mm	Hex Key (s) mm	Pitch mm
		<i>inches</i>		<i>inches</i>	<i>inches</i>	<i>inches</i>	<i>inches</i>	<i>inches</i>
# SK200M-055-SK-CZ	M20x2.5 (20mm Standard)	55	Zinc Plated Steel	36.0	8.5	46	12.00	2.500
		<i>2.165</i>		<i>1.417</i>	<i>0.335</i>	<i>1.811</i>	<i>0.472</i>	<i>0.098</i>
# SK200M-060-SK-CZ	M20x2.5 (20mm Standard)	60	Zinc Plated Steel	36.0	8.5	46	12.00	2.500
		<i>2.362</i>		<i>1.417</i>	<i>0.335</i>	<i>1.811</i>	<i>0.472</i>	<i>0.098</i>
# SK200M-070-SK-CZ	M20x2.5 (20mm Standard)	70	Zinc Plated Steel	36.0	8.5	46	12.00	2.500
		<i>2.756</i>		<i>1.417</i>	<i>0.335</i>	<i>1.811</i>	<i>0.472</i>	<i>0.098</i>
# SK200M-075-SK-CZ	M20x2.5 (20mm Standard)	75	Zinc Plated Steel	36.0	8.5	46	12.00	2.500
		<i>2.953</i>		<i>1.417</i>	<i>0.335</i>	<i>1.811</i>	<i>0.472</i>	<i>0.098</i>
# SK200M-080-SK-CZ	M20x2.5 (20mm Standard)	80	Zinc Plated Steel	36.0	8.5	46	12.00	2.500
		<i>3.150</i>		<i>1.417</i>	<i>0.335</i>	<i>1.811</i>	<i>0.472</i>	<i>0.098</i>
# SK200M-090-SK-CZ	M20x2.5 (20mm Standard)	90	Zinc Plated Steel	36.0	8.5	46	12.00	2.500
		<i>3.543</i>		<i>1.417</i>	<i>0.335</i>	<i>1.811</i>	<i>0.472</i>	<i>0.098</i>
# SK200M-100-SK-CZ	M20x2.5 (20mm Standard)	100	Zinc Plated Steel	36.0	8.5	46	12.00	2.500
		<i>3.937</i>		<i>1.417</i>	<i>0.335</i>	<i>1.811</i>	<i>0.472</i>	<i>0.098</i>
# SK200M-110-SK-CZ	M20x2.5 (20mm Standard)	110	Zinc Plated Steel	36.0	8.5	46	12.00	2.500
		<i>4.331</i>		<i>1.417</i>	<i>0.335</i>	<i>1.811</i>	<i>0.472</i>	<i>0.098</i>

Indicates item not stocked at time of printing - Please enquire for lead time

Page 56 of 60

E&OE Pricing and all details subject to change without notice - Copyright Miniature Bearings Australia Pty Ltd

MBA Size Listings are a guide to sizes only and must not be solely relied on for critical design information.

Screws - Countersunk - Socket - Steel - Zinc Plated

Part Number	Thread Size (C)	Length (L) mm	Material	Max Head Diameter mm	Max Head Height mm	Approx Thread Length (l) mm	Hex Key (s) mm	Pitch mm
		<i>inches</i>		<i>inches</i>	<i>inches</i>	<i>inches</i>	<i>inches</i>	<i>inches</i>
# SK200M-120-SK-CZ	M20x2.5 (20mm Standard)	120 <i>4.724</i>	Zinc Plated Steel	36.0 <i>1.417</i>	8.5 <i>0.335</i>	46 <i>1.811</i>	12.00 <i>0.472</i>	2.500 <i>0.098</i>
# SK200M-130-SK-CZ	M20x2.5 (20mm Standard)	130 <i>5.118</i>	Zinc Plated Steel	36.0 <i>1.417</i>	8.5 <i>0.335</i>	52 <i>2.047</i>	12.00 <i>0.472</i>	2.500 <i>0.098</i>
# SK200M-140-SK-CZ	M20x2.5 (20mm Standard)	140 <i>5.512</i>	Zinc Plated Steel	36.0 <i>1.417</i>	8.5 <i>0.335</i>	52 <i>2.047</i>	12.00 <i>0.472</i>	2.500 <i>0.098</i>
# SK200M-150-SK-CZ	M20x2.5 (20mm Standard)	150 <i>5.906</i>	Zinc Plated Steel	36.0 <i>1.417</i>	8.5 <i>0.335</i>	52 <i>2.047</i>	12.00 <i>0.472</i>	2.500 <i>0.098</i>
# SK200M-160-SK-CZ	M20x2.5 (20mm Standard)	160 <i>6.299</i>	Zinc Plated Steel	36.0 <i>1.417</i>	8.5 <i>0.335</i>	52 <i>2.047</i>	12.00 <i>0.472</i>	2.500 <i>0.098</i>
# SK200M-180-SK-CZ	M20x2.5 (20mm Standard)	180 <i>7.087</i>	Zinc Plated Steel	36.0 <i>1.417</i>	8.5 <i>0.335</i>	52 <i>2.047</i>	12.00 <i>0.472</i>	2.500 <i>0.098</i>
# SK200M-200-SK-CZ	M20x2.5 (20mm Standard)	200 <i>7.874</i>	Zinc Plated Steel	36.0 <i>1.417</i>	8.5 <i>0.335</i>	52 <i>2.047</i>	12.00 <i>0.472</i>	2.500 <i>0.098</i>
# SK200M-220-SK-CZ	M20x2.5 (20mm Standard)	220 <i>8.661</i>	Zinc Plated Steel	36.0 <i>1.417</i>	8.5 <i>0.335</i>	52 <i>2.047</i>	12.00 <i>0.472</i>	2.500 <i>0.098</i>

Indicates item not stocked at time of printing - Please enquire for lead time

Page 57 of 60

E&OE Pricing and all details subject to change without notice - Copyright Miniature Bearings Australia Pty Ltd

MBA Size Listings are a guide to sizes only and must not be solely relied on for critical design information.

Screws - Countersunk - Socket - Steel - Zinc Plated

Part Number	Thread Size (C)	Length (L) mm	Material	Max Head Diameter mm	Max Head Height mm	Approx Thread Length (l) mm	Hex Key (s) mm	Pitch mm
		<i>inches</i>		<i>inches</i>	<i>inches</i>	<i>inches</i>	<i>inches</i>	<i>inches</i>
# SK200M-240-SK-CZ	M20x2.5 (20mm Standard)	240	Zinc Plated Steel	36.0	8.5	52	12.00	2.500
		<i>9.449</i>		<i>1.417</i>	<i>0.335</i>	<i>2.047</i>	<i>0.472</i>	<i>0.098</i>
# SK240M-050-SK-CZ	M24x3 (24mm Standard)	50	Zinc Plated Steel	39.0	14.0	54	14.00	3.000
		<i>1.969</i>		<i>1.535</i>	<i>0.551</i>	<i>2.126</i>	<i>0.551</i>	<i>0.118</i>
# SK240M-060-SK-CZ	M24x3 (24mm Standard)	60	Zinc Plated Steel	39.0	14.0	54	14.00	3.000
		<i>2.362</i>		<i>1.535</i>	<i>0.551</i>	<i>2.126</i>	<i>0.551</i>	<i>0.118</i>
# SK240M-070-SK-CZ	M24x3 (24mm Standard)	70	Zinc Plated Steel	39.0	14.0	54	14.00	3.000
		<i>2.756</i>		<i>1.535</i>	<i>0.551</i>	<i>2.126</i>	<i>0.551</i>	<i>0.118</i>
# SK240M-080-SK-CZ	M24x3 (24mm Standard)	80	Zinc Plated Steel	39.0	14.0	54	14.00	3.000
		<i>3.150</i>		<i>1.535</i>	<i>0.551</i>	<i>2.126</i>	<i>0.551</i>	<i>0.118</i>
# SK240M-090-SK-CZ	M24x3 (24mm Standard)	90	Zinc Plated Steel	39.0	14.0	54	14.00	3.000
		<i>3.543</i>		<i>1.535</i>	<i>0.551</i>	<i>2.126</i>	<i>0.551</i>	<i>0.118</i>
# SK240M-100-SK-CZ	M24x3 (24mm Standard)	100	Zinc Plated Steel	39.0	14.0	54	14.00	3.000
		<i>3.937</i>		<i>1.535</i>	<i>0.551</i>	<i>2.126</i>	<i>0.551</i>	<i>0.118</i>
# SK240M-110-SK-CZ	M24x3 (24mm Standard)	110	Zinc Plated Steel	39.0	14.0	54	14.00	3.000
		<i>4.331</i>		<i>1.535</i>	<i>0.551</i>	<i>2.126</i>	<i>0.551</i>	<i>0.118</i>

Indicates item not stocked at time of printing - Please enquire for lead time

Page 58 of 60

E&OE Pricing and all details subject to change without notice - Copyright Miniature Bearings Australia Pty Ltd

MBA Size Listings are a guide to sizes only and must not be solely relied on for critical design information.

Screws - Countersunk - Socket - Steel - Zinc Plated

Part Number	Thread Size (C)	Length (L) mm	Material	Max Head Diameter mm	Max Head Height mm	Approx Thread Length (l) mm	Hex Key (s) mm	Pitch mm
		<i>inches</i>		<i>inches</i>	<i>inches</i>	<i>inches</i>	<i>inches</i>	<i>inches</i>
# SK240M-120-SK-CZ	M24x3 (24mm Standard)	120	Zinc Plated Steel	39.0	14.0	54	14.00	3.000
		<i>4.724</i>		<i>1.535</i>	<i>0.551</i>	<i>2.126</i>	<i>0.551</i>	<i>0.118</i>
# SK240M-130-SK-CZ	M24x3 (24mm Standard)	130	Zinc Plated Steel	39.0	14.0	60	14.00	3.000
		<i>5.118</i>		<i>1.535</i>	<i>0.551</i>	<i>2.362</i>	<i>0.551</i>	<i>0.118</i>
# SK240M-140-SK-CZ	M24x3 (24mm Standard)	140	Zinc Plated Steel	39.0	14.0	60	14.00	3.000
		<i>5.512</i>		<i>1.535</i>	<i>0.551</i>	<i>2.362</i>	<i>0.551</i>	<i>0.118</i>
# SK240M-150-SK-CZ	M24x3 (24mm Standard)	150	Zinc Plated Steel	39.0	14.0	60	14.00	3.000
		<i>5.906</i>		<i>1.535</i>	<i>0.551</i>	<i>2.362</i>	<i>0.551</i>	<i>0.118</i>
# SK240M-160-SK-CZ	M24x3 (24mm Standard)	160	Zinc Plated Steel	39.0	14.0	60	14.00	3.000
		<i>6.299</i>		<i>1.535</i>	<i>0.551</i>	<i>2.362</i>	<i>0.551</i>	<i>0.118</i>
# SK240M-180-SK-CZ	M24x3 (24mm Standard)	180	Zinc Plated Steel	39.0	14.0	60	14.00	3.000
		<i>7.087</i>		<i>1.535</i>	<i>0.551</i>	<i>2.362</i>	<i>0.551</i>	<i>0.118</i>
# SK240M-200-SK-CZ	M24x3 (24mm Standard)	200	Zinc Plated Steel	39.0	14.0	60	14.00	3.000
		<i>7.874</i>		<i>1.535</i>	<i>0.551</i>	<i>2.362</i>	<i>0.551</i>	<i>0.118</i>
# SK240M-220-SK-CZ	M24x3 (24mm Standard)	220	Zinc Plated Steel	39.0	14.0	60	14.00	3.000
		<i>8.661</i>		<i>1.535</i>	<i>0.551</i>	<i>2.362</i>	<i>0.551</i>	<i>0.118</i>

Indicates item not stocked at time of printing - Please enquire for lead time

Page 59 of 60

E&OE Pricing and all details subject to change without notice - Copyright Miniature Bearings Australia Pty Ltd

MBA Size Listings are a guide to sizes only and must not be solely relied on for critical design information.

Screws - Countersunk - Socket - Steel - Zinc Plated

Part Number	Thread Size (C)	Length (L) mm	Material	Max Head Diameter mm	Max Head Height mm	Approx Thread Length (l) mm	Hex Key (s) mm	Pitch mm
		<i>inches</i>		<i>inches</i>	<i>inches</i>	<i>inches</i>	<i>inches</i>	<i>inches</i>
# SK240M-240-SK-CZ	M24x3 (24mm Standard)	240	Zinc Plated Steel	39.0	14.0	60	14.00	3.000
		<i>9.449</i>		<i>1.535</i>	<i>0.551</i>	<i>2.362</i>	<i>0.551</i>	<i>0.118</i>
# SK240M-300-SK-CZ	M24x3 (24mm Standard)	300	Zinc Plated Steel	39.0	14.0	60	14.00	3.000
		<i>11.811</i>		<i>1.535</i>	<i>0.551</i>	<i>2.362</i>	<i>0.551</i>	<i>0.118</i>
# SK300M-100-SK-CZ	M30x3.5 (30mm Standard)	100	Zinc Plated Steel	-	-	60	22.00	3.500
		<i>3.937</i>				<i>2.362</i>	<i>0.866</i>	<i>0.138</i>

Indicates item not stocked at time of printing - Please enquire for lead time

Page 60 of 60

E&OE Pricing and all details subject to change without notice - Copyright Miniature Bearings Australia Pty Ltd
MBA Size Listings are a guide to sizes only and must not be solely relied on for critical design information.

DISTRIBUTED BY

Distributed By:

