



Screws - Set - Dog Point - Square Head

10/4/2018

Indicates item not stocked at time of printing - Please enquire for lead time

E&OE Pricing and all details subject to change without notice - Copyright Miniature Bearings Australia Pty Ltd

MBA Size Listings are a guide to sizes only and must not be solely relied on for critical design information.

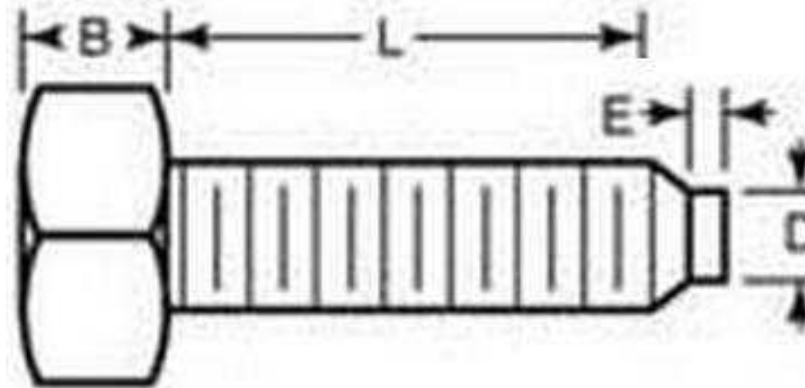
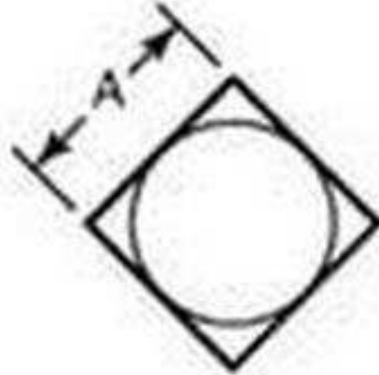
INFORMATION

Grade 8 heat treated alloy steel. All screws are threaded to the head.

Indicates item not stocked at time of printing - Please enquire for lead time

E&OE Pricing and all details subject to change without notice - Copyright Miniature Bearings Australia Pty Ltd

MBA Size Listings are a guide to sizes only and must not be solely relied on for critical design information.



Indicates item not stocked at time of printing - Please enquire for lead time

E&OE Pricing and all details subject to change without notice - Copyright Miniature Bearings Australia Pty Ltd

MBA Size Listings are a guide to sizes only and must not be solely relied on for critical design information.

Screws - Set - Dog Point - Square Head

Part Number	Thread	Thread Length (L) mm	Head Flats (A) mm	Head Height (B) mm	Tip Diameter (D) mm	Tip Height (E) mm
		<i>inches</i>	<i>inches</i>	<i>inches</i>	<i>inches</i>	<i>inches</i>
# SC064C-051-SQ-C-DP	1/4-20 UNC (6.35mm)	50.800 <i>2.000</i>	6.350 <i>0.250</i>	4.740 <i>0.187</i>	3.960 <i>0.156</i>	1.570 <i>0.062</i>
# SC079C-032-SQ-C-DP	5/16-18 UNC (7.938mm)	31.750 <i>1.250</i>	7.920 <i>0.312</i>	5.953 <i>0.234</i>	5.160 <i>0.203</i>	1.980 <i>0.078</i>
# SC095C-032-SQ-C-DP	3/8-16 UNC (9.525mm)	31.750 <i>1.250</i>	9.520 <i>0.375</i>	7.130 <i>0.281</i>	6.350 <i>0.250</i>	2.360 <i>0.093</i>
# SC095C-051-SQ-C-DP	3/8-16 UNC (9.525mm)	50.800 <i>2.000</i>	9.520 <i>0.375</i>	7.130 <i>0.281</i>	6.350 <i>0.250</i>	2.360 <i>0.093</i>
# SC095C-064-SQ-C-DP	3/8-16 UNC (9.525mm)	63.500 <i>2.500</i>	9.520 <i>0.375</i>	7.130 <i>0.281</i>	6.350 <i>0.250</i>	2.360 <i>0.093</i>
# SC095C-076-SQ-C-DP	3/8-16 UNC (9.525mm)	76.200 <i>3.000</i>	9.520 <i>0.375</i>	7.130 <i>0.281</i>	6.350 <i>0.250</i>	2.360 <i>0.093</i>
# SC127C-038-SQ-C-DP	1/2-13 UNC (12.7mm)	38.100 <i>1.500</i>	12.700 <i>0.500</i>	9.520 <i>0.375</i>	8.710 <i>0.343</i>	3.170 <i>0.125</i>
# SC127C-051-SQ-C-DP	1/2-13 UNC (12.7mm)	50.800 <i>2.000</i>	12.700 <i>0.500</i>	9.520 <i>0.375</i>	8.710 <i>0.343</i>	3.170 <i>0.125</i>
# SC127C-064-SQ-C-DP	1/2-13 UNC (12.7mm)	63.500 <i>2.500</i>	12.700 <i>0.500</i>	9.520 <i>0.375</i>	8.710 <i>0.343</i>	3.170 <i>0.125</i>
# SC127C-076-SQ-C-DP	1/2-13 UNC (12.7mm)	76.200 <i>3.000</i>	12.700 <i>0.500</i>	9.520 <i>0.375</i>	8.710 <i>0.343</i>	3.170 <i>0.125</i>

Indicates item not stocked at time of printing - Please enquire for lead time

E&OE Pricing and all details subject to change without notice - Copyright Miniature Bearings Australia Pty Ltd

MBA Size Listings are a guide to sizes only and must not be solely relied on for critical design information.

Screws - Set - Dog Point - Square Head

Part Number	Thread	Thread Length (L) mm	Head Flats (A) mm	Head Height (B) mm	Tip Diameter (D) mm	Tip Height (E) mm
		<i>inches</i>	<i>inches</i>	<i>inches</i>	<i>inches</i>	<i>inches</i>
# SC127C-102-SQ-C-DP	1/2-13 UNC (12.7mm)	101.600 <i>4.000</i>	12.700 <i>0.500</i>	9.520 <i>0.375</i>	8.710 <i>0.343</i>	3.170 <i>0.125</i>
# SC159C-051-SQ-C-DP	5/8-11 UNC (15.875mm)	50.800 <i>2.000</i>	15.870 <i>0.625</i>	11.910 <i>0.469</i>	11.910 <i>0.469</i>	3.960 <i>0.156</i>
# SC159C-076-SQ-C-DP	5/8-11 UNC (15.875mm)	76.200 <i>3.000</i>	15.870 <i>0.625</i>	11.910 <i>0.469</i>	11.910 <i>0.469</i>	3.960 <i>0.156</i>
# SC159C-102-SQ-C-DP	5/8-11 UNC (15.875mm)	101.600 <i>4.000</i>	15.870 <i>0.625</i>	11.910 <i>0.469</i>	11.910 <i>0.469</i>	3.960 <i>0.156</i>
# SC159C-127-SQ-C-DP	5/8-11 UNC (15.875mm)	127.000 <i>5.000</i>	15.870 <i>0.625</i>	11.910 <i>0.469</i>	11.910 <i>0.469</i>	3.960 <i>0.156</i>
# SC191C-051-SQ-C-DP	3/4-10 UNC (19.05mm)	50.800 <i>2.000</i>	19.050 <i>0.750</i>	14.270 <i>0.562</i>	14.270 <i>0.562</i>	4.740 <i>0.187</i>
# SC191C-064-SQ-C-DP	3/4-10 UNC (19.05mm)	63.500 <i>2.500</i>	19.050 <i>0.750</i>	14.270 <i>0.562</i>	14.270 <i>0.562</i>	4.740 <i>0.187</i>
# SC191C-076-SQ-C-DP	3/4-10 UNC (19.05mm)	76.200 <i>3.000</i>	19.050 <i>0.750</i>	14.270 <i>0.562</i>	14.270 <i>0.562</i>	4.740 <i>0.187</i>
# SC191C-102-SQ-C-DP	3/4-10 UNC (19.05mm)	101.600 <i>4.000</i>	19.050 <i>0.750</i>	14.270 <i>0.562</i>	14.270 <i>0.562</i>	4.740 <i>0.187</i>
# SC191C-127-SQ-C-DP	3/4-10 UNC (19.05mm)	127.000 <i>5.000</i>	19.050 <i>0.750</i>	14.270 <i>0.562</i>	14.270 <i>0.562</i>	4.740 <i>0.187</i>

Indicates item not stocked at time of printing - Please enquire for lead time

E&OE Pricing and all details subject to change without notice - Copyright Miniature Bearings Australia Pty Ltd

MBA Size Listings are a guide to sizes only and must not be solely relied on for critical design information.

DISTRIBUTED BY

Distributed By:

