



Shackles - Anchor - Safety - Steel

10/4/2018

Indicates item not stocked at time of printing - Please enquire for lead time

E&OE Pricing and all details subject to change without notice - Copyright Miniature Bearings Australia Pty Ltd

MBA Size Listings are a guide to sizes only and must not be solely relied on for critical design information.

INFORMATION

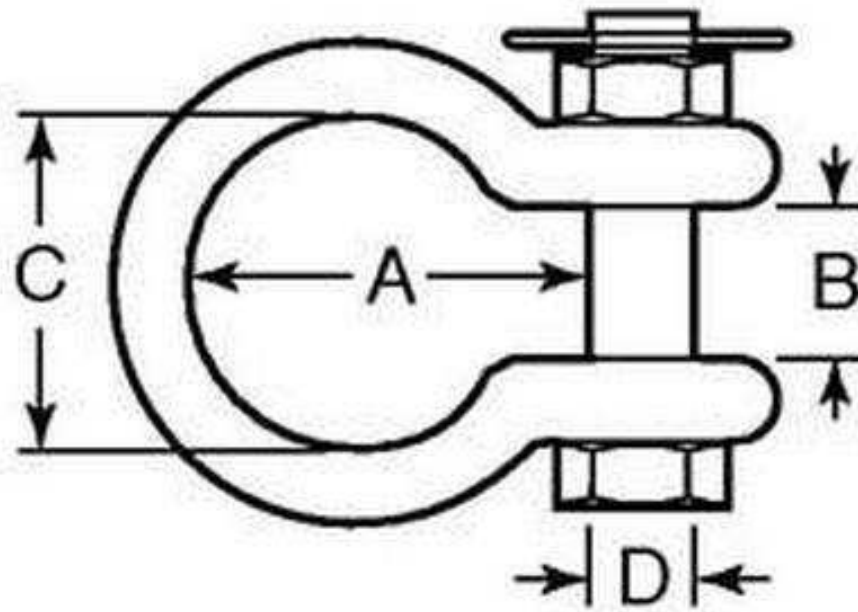
Forged carbon steel, self coloured.

Bolt runs all the way through the shackle and is secured with a nut and cotter pin

Indicates item not stocked at time of printing - Please enquire for lead time

E&OE Pricing and all details subject to change without notice - Copyright Miniature Bearings Australia Pty Ltd

MBA Size Listings are a guide to sizes only and must not be solely relied on for critical design information.



Indicates item not stocked at time of printing - Please enquire for lead time

E&OE Pricing and all details subject to change without notice - Copyright Miniature Bearings Australia Pty Ltd

MBA Size Listings are a guide to sizes only and must not be solely relied on for critical design information.

Shackles - Anchor - Safety - Steel

Part Number	Nominal Shackle Size mm <i>inches</i>	Inside Length (A) mm <i>inches</i>	Inside Width (B) mm <i>inches</i>	Inside Bow Width (C) mm <i>inches</i>	Pin Diameter (D) mm <i>inches</i>	Rated Load Tonnes
# AS-105RS	6.350 <i>0.250</i>	28.575 <i>1.125</i>	11.9 <i>0.469</i>	19.050 <i>0.750</i>	7.925 <i>0.312</i>	0.5
# AS-110RS	7.925 <i>0.312</i>	31.750 <i>1.250</i>	13.5 <i>0.531</i>	33.325 <i>1.312</i>	9.525 <i>0.375</i>	0.75
# AS-115RS	9.525 <i>0.375</i>	36.500 <i>1.437</i>	16.7 <i>0.657</i>	28.575 <i>1.125</i>	11.100 <i>0.437</i>	1
# AS-120RS	11.100 <i>0.437</i>	42.863 <i>1.688</i>	18.2 <i>0.717</i>	33.325 <i>1.312</i>	12.700 <i>0.500</i>	1.5
# AS-125RS	12.700 <i>0.500</i>	49.213 <i>1.938</i>	20.6 <i>0.811</i>	38.100 <i>1.500</i>	15.875 <i>0.625</i>	2
# AS-130RS	15.875 <i>0.625</i>	63.500 <i>2.500</i>	26.9 <i>1.059</i>	47.625 <i>1.875</i>	19.050 <i>0.750</i>	3.25
# AS-135RS	19.050 <i>0.750</i>	76.200 <i>3.000</i>	31.75 <i>1.250</i>	50.800 <i>2.000</i>	22.225 <i>0.875</i>	4.75
# AS-140RS	22.225 <i>0.875</i>	82.550 <i>3.250</i>	36.5 <i>1.437</i>	66.675 <i>2.625</i>	25.400 <i>1.000</i>	6.5
# AS-150RS	28.575 <i>1.125</i>	107.950 <i>4.250</i>	46.0 <i>1.811</i>	74.613 <i>2.938</i>	31.750 <i>1.250</i>	9.5

Indicates item not stocked at time of printing - Please enquire for lead time

E&OE Pricing and all details subject to change without notice - Copyright Miniature Bearings Australia Pty Ltd

MBA Size Listings are a guide to sizes only and must not be solely relied on for critical design information.

DISTRIBUTED BY

Distributed By:

