



## Shafts - Idler

10/4/2018

# Indicates item not stocked at time of printing - Please enquire for lead time

E&OE Pricing and all details subject to change without notice - Copyright Miniature Bearings Australia Pty Ltd

MBA Size Listings are a guide to sizes only and must not be solely relied on for critical design information.

## INFORMATION

Ready made precision ground idler shafts.

Internal grease hole can be accessed by drilling if required

Use with your idler pulleys.

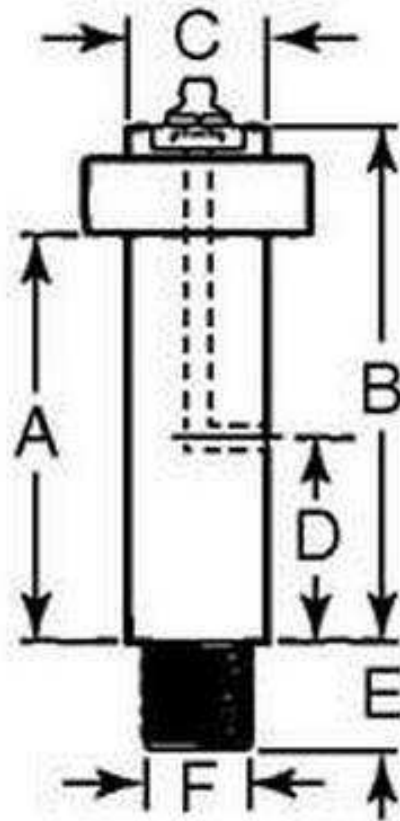
Can be used with the idler tensioners listed on this site or use in your own design.

This catalogue to be read in conjunction with information at <http://www.minibearings.com.au/categories/tensioners/>

# Indicates item not stocked at time of printing - Please enquire for lead time

E&OE Pricing and all details subject to change without notice - Copyright Miniature Bearings Australia Pty Ltd

MBA Size Listings are a guide to sizes only and must not be solely relied on for critical design information.



# Indicates item not stocked at time of printing - Please enquire for lead time

E&OE Pricing and all details subject to change without notice - Copyright Miniature Bearings Australia Pty Ltd  
MBA Size Listings are a guide to sizes only and must not be solely relied on for critical design information.

## Shafts - Idler

Part Number	Shaft Length (A) mm <i>inches</i>	Diameter (C) mm <i>inches</i>	Thread Size	Overall Length (B) mm <i>inches</i>	Base to grease hole depth (D) mm <i>inches</i>	Thread Length (E) mm <i>inches</i>	Approx Weight Kg
# IDC-167RS	26.975 <i>1.062</i>	12.700 <i>0.500</i>	3/8-16	38.100 <i>1.500</i>	9.525 <i>0.375</i>	11.100 <i>0.437</i>	0.07
# IDC-161RS	26.975 <i>1.062</i>	12.700 <i>0.500</i>	3/8-16	38.100 <i>1.500</i>	9.525 <i>0.375</i>	11.100 <i>0.437</i>	0.07
# IDC-168RS	38.100 <i>1.500</i>	25.400 <i>1.000</i>	3/4-16	53.975 <i>2.125</i>	15.875 <i>0.625</i>	22.225 <i>0.875</i>	0.33
# IDC-162RS	38.100 <i>1.500</i>	25.400 <i>1.000</i>	3/4-10	53.975 <i>2.125</i>	15.875 <i>0.625</i>	22.225 <i>0.875</i>	0.33
# IDC-169RS	63.500 <i>2.500</i>	25.400 <i>1.000</i>	3/4-16	79.375 <i>3.125</i>	28.575 <i>1.125</i>	22.225 <i>0.875</i>	0.42
# IDC-163RS	63.500 <i>2.500</i>	25.400 <i>1.000</i>	3/4-10	79.375 <i>3.125</i>	28.575 <i>1.125</i>	22.225 <i>0.875</i>	0.42
# IDC-171RS	82.550 <i>3.250</i>	38.100 <i>1.500</i>	1in.-14TPI	101.600 <i>4.000</i>	34.925 <i>1.375</i>	33.325 <i>1.312</i>	1.17
# IDC-165RS	82.550 <i>3.250</i>	38.100 <i>1.500</i>	1in.-8TPI	101.600 <i>4.000</i>	34.925 <i>1.375</i>	33.325 <i>1.312</i>	1.17
# IDC-170RS	88.900 <i>3.500</i>	25.400 <i>1.000</i>	3/4-16	104.775 <i>4.125</i>	41.275 <i>1.625</i>	22.225 <i>0.875</i>	0.52
# IDC-164RS	88.900 <i>3.500</i>	25.400 <i>1.000</i>	3/4-10	104.775 <i>4.125</i>	41.275 <i>1.625</i>	22.225 <i>0.875</i>	0.52

# Indicates item not stocked at time of printing - Please enquire for lead time

Page 4 of 5

E&OE Pricing and all details subject to change without notice - Copyright Miniature Bearings Australia Pty Ltd  
MBA Size Listings are a guide to sizes only and must not be solely relied on for critical design information.

## Shafts - Idler

Part Number	Shaft Length (A) mm	Diameter (C) mm	Thread Size	Overall Length (B) mm	Base to grease hole depth (D) mm	Thread Length (E) mm	Approx Weight Kg
	<i>inches</i>	<i>inches</i>		<i>inches</i>	<i>inches</i>	<i>inches</i>	
# IDC-172RS	133.350 <i>5.250</i>	38.100 <i>1.500</i>	1in.-14TPI	152.400 <i>6.000</i>	63.500 <i>2.500</i>	33.325 <i>1.312</i>	1.62
# IDC-166RS	133.350 <i>5.250</i>	38.100 <i>1.500</i>	1in.-8TPI	152.400 <i>6.000</i>	63.500 <i>2.500</i>	33.325 <i>1.312</i>	1.62
# IDC-173RS	203.200 <i>8.000</i>	50.800 <i>2.000</i>	-	330.200 <i>13.000</i>	-	101.600 <i>4.000</i>	5.58

# Indicates item not stocked at time of printing - Please enquire for lead time

E&OE Pricing and all details subject to change without notice - Copyright Miniature Bearings Australia Pty Ltd

MBA Size Listings are a guide to sizes only and must not be solely relied on for critical design information.

DISTRIBUTED BY

Distributed By:

