



Sleeves - Square Hole - Threaded - Carbon Steel

10/4/2018

Indicates item not stocked at time of printing - Please enquire for lead time

E&OE Pricing and all details subject to change without notice - Copyright Miniature Bearings Australia Pty Ltd

MBA Size Listings are a guide to sizes only and must not be solely relied on for critical design information.

Page 1 of 5

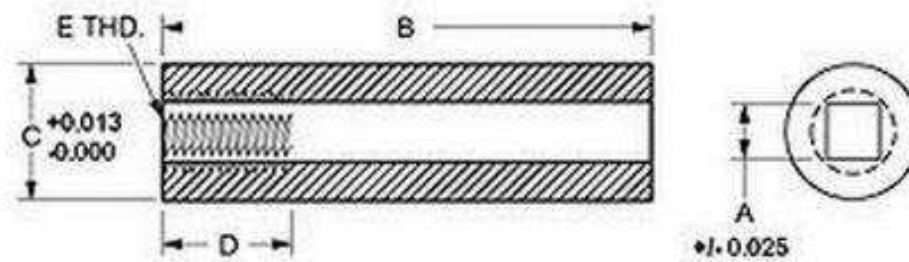
INFORMATION

Square and concentric to 0.076mm (0.003in). Round OD with with a uniform square hole all the way through and threaded internally at one end.

Indicates item not stocked at time of printing - Please enquire for lead time

E&OE Pricing and all details subject to change without notice - Copyright Miniature Bearings Australia Pty Ltd

MBA Size Listings are a guide to sizes only and must not be solely relied on for critical design information.



Indicates item not stocked at time of printing - Please enquire for lead time

E&OE Pricing and all details subject to change without notice - Copyright Miniature Bearings Australia Pty Ltd

MBA Size Listings are a guide to sizes only and must not be solely relied on for critical design information.

Sleeves - Square Hole - Threaded - Carbon Steel

Part Number	Nominal Square Size mm	Outside Diameter (C) mm	Length (B) mm	Actual Square Size (A) mm	Thread Depth (D) mm	Thread Size	Material	More Information
	<i>inches</i>	<i>inches</i>	<i>inches</i>	<i>inches</i>	<i>inches</i>			
# SLQ-0318-0556-01905-T	3.251	5.555	19.050	3.175	6.350	10-32 UNF (4.762mm)	11L17 Carbon Steel	
	<i>0.128</i>	<i>0.219</i>	<i>0.750</i>	<i>0.125</i>	<i>0.250</i>			
# SLQ-0476-0795-03810-T	4.864	7.938	38.100	4.763	11.125	1/4-28 UNF (6.350mm)	11L17 Carbon Steel	
	<i>0.191</i>	<i>0.313</i>	<i>1.500</i>	<i>0.188</i>	<i>0.438</i>			
# SLQ-0635-1111-05080-T	6.477	11.111	50.800	6.350	12.700	5/16-24 UNF (7.938mm)	11L17 Carbon Steel	
	<i>0.255</i>	<i>0.437</i>	<i>2.000</i>	<i>0.250</i>	<i>0.500</i>			
# SLQ-0635-1149-05080-T	6.477	11.494	50.800	6.350	11.113	5/16-24 UNF	11L17 Carbon Steel	
	<i>0.255</i>	<i>0.453</i>	<i>2.000</i>	<i>0.250</i>	<i>0.438</i>			
SLQ-0794-1270-05715-T	8.065	12.700	57.150	7.938	14.300	3/8-24 UNF (9.525mm)	11L17 Carbon Steel	
	<i>0.318</i>	<i>0.500</i>	<i>2.250</i>	<i>0.313</i>	<i>0.563</i>			
# SLQ-0953-1509-06350-T	9.652	15.081	63.500	9.525	15.875	1/2-20 UNF (12.700mm)	11L17 Carbon Steel	
	<i>0.380</i>	<i>0.594</i>	<i>2.500</i>	<i>0.375</i>	<i>0.625</i>			
# SLQ-0953-1546-06350-T	9.652	15.461	63.500	9.525	15.875	1/2-20 UNF	11L17 Carbon Steel	
	<i>0.380</i>	<i>0.609</i>	<i>2.500</i>	<i>0.375</i>	<i>0.625</i>			
# SLQ-1111-1748-06668-T	11.240	17.462	66.675	11.111	15.875	1/2-20 UNF (12.700mm)	11L17 Carbon Steel	
	<i>0.443</i>	<i>0.687</i>	<i>2.625</i>	<i>0.437</i>	<i>0.625</i>			

Indicates item not stocked at time of printing - Please enquire for lead time

E&OE Pricing and all details subject to change without notice - Copyright Miniature Bearings Australia Pty Ltd

MBA Size Listings are a guide to sizes only and must not be solely relied on for critical design information.

Sleeves - Square Hole - Threaded - Carbon Steel

Part Number	Nominal Square Size mm	Outside Diameter (C) mm	Length (B) mm	Actual Square Size (A) mm	Thread Depth (D) mm	Thread Size	Material	More Information
	<i>inches</i>	<i>inches</i>	<i>inches</i>	<i>inches</i>	<i>inches</i>			
# SLQ-1270-1984-06985-T	12.827 <i>0.505</i>	19.837 <i>0.781</i>	69.850 <i>2.750</i>	12.700 <i>0.500</i>	15.875 <i>0.625</i>	5/8-18 UNF (15.875mm)	11L17 Carbon Steel	
# SLQ-1270-2022-06985-T	12.827 <i>0.505</i>	20.223 <i>0.796</i>	69.850 <i>2.750</i>	12.700 <i>0.500</i>	15.875 <i>0.625</i>	5/8-18 UNF	11L17 Carbon Steel	
# SLQ-1600-2383-08255-T	16.002 <i>0.630</i>	23.812 <i>0.937</i>	82.550 <i>3.250</i>	15.875 <i>0.625</i>	25.400 <i>1.000</i>	3/4-16 UNF (19.050mm)	11L17 Carbon Steel	
# SLQ-1600-2419-08255-T	16.002 <i>0.630</i>	24.194 <i>0.953</i>	82.550 <i>3.250</i>	15.875 <i>0.625</i>	25.400 <i>1.000</i>	3/4-16 UNF	11L17 Carbon Steel	
# SLQ-1905-2896-10160-T	19.177 <i>0.755</i>	28.956 <i>1.140</i>	101.600 <i>4.000</i>	19.050 <i>0.750</i>	31.750 <i>1.250</i>	1-14 UNF	11L17 Carbon Steel	
# SLQ-2225-3334-10160-T	22.352 <i>0.880</i>	33.338 <i>1.313</i>	101.600 <i>4.000</i>	22.225 <i>0.875</i>	25.400 <i>1.000</i>	1in UNS (25.400mm)	11L17 Carbon Steel	
# SLQ-2540-3810-12700-T	25.603 <i>1.008</i>	38.100 <i>1.500</i>	127.000 <i>5.000</i>	25.400 <i>1.000</i>	38.100 <i>1.500</i>	1-1/8 UNF (28.575mm)	11L17 Carbon Steel	
# SLQ-3175-5080-12700-T	32.004 <i>1.260</i>	50.800 <i>2.000</i>	127.000 <i>5.000</i>	31.750 <i>1.250</i>	38.100 <i>1.500</i>	1-1/2 UNF (38.100mm)	11L17 Carbon Steel	

Indicates item not stocked at time of printing - Please enquire for lead time

E&OE Pricing and all details subject to change without notice - Copyright Miniature Bearings Australia Pty Ltd

MBA Size Listings are a guide to sizes only and must not be solely relied on for critical design information.

DISTRIBUTED BY

Distributed By:

