



Sprockets - 6.35 x 2.8mm - Simplex - Carbon Steel - Finished Bore

10/4/2018

Indicates item not stocked at time of printing - Please enquire for lead time

E&OE Pricing and all details subject to change without notice - Copyright Miniature Bearings Australia Pty Ltd

MBA Size Listings are a guide to sizes only and must not be solely relied on for critical design information.

Page 1 of 22

INFORMATION

25-1 ASA 1/4 Inch. With finished bore.

Match with 6.35mm simplex chain

American Standard 25-1 - 1/4 inch

For easy ready selected sets of chain and sprockets please see the HES website

This catalogue to be read in conjunction with information at <http://www.minibearings.com.au//item/ch1064032r304825a/chainrollermetalsimplex/>

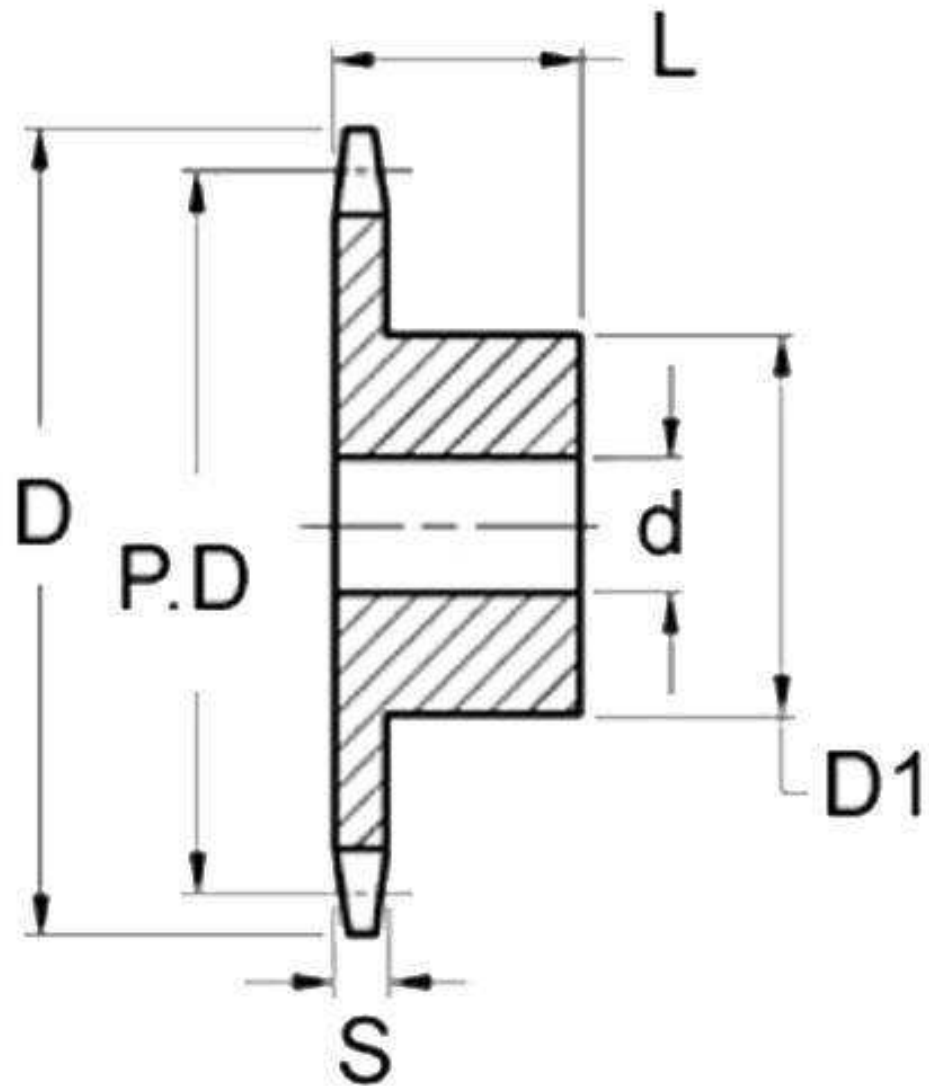
<http://www.minibearings.com.au//item/ch1064032r030425ass/chainrollermetalsimplexstainlesssteel/>

<http://www.minibearings.com.au//item/ch1064032r030525aac/chainrollerplasticsimplex/>

Indicates item not stocked at time of printing - Please enquire for lead time

E&OE Pricing and all details subject to change without notice - Copyright Miniature Bearings Australia Pty Ltd

MBA Size Listings are a guide to sizes only and must not be solely relied on for critical design information.



Indicates item not stocked at time of printing - Please enquire for lead time

E&OE Pricing and all details subject to change without notice - Copyright Miniature Bearings Australia Pty Ltd

MBA Size Listings are a guide to sizes only and must not be solely relied on for critical design information.

Sprockets - 6.35 x 2.8mm - Simplex - Carbon Steel - Finished Bore

Part Number	Teeth No.	PCD mm	Hub Diameter (D1)	Overall Width (L) mm	Material mm	Type / Rows	Finished Bore (d) mm	Locking Method
		<i>inches</i>		<i>inches</i>	<i>inches</i>		<i>inches</i>	
SP1-064-028B-009-064F-C	9	18.18	11.13	12.70	Carbon Steel	Type 3s	6.350	2 Set Screws 8-32 at 90 Deg
		<i>0.716</i>		<i>0.500</i>			<i>0.250</i>	
# SP1-064-028B-010-064F-C	10	20.2	12.70	12.70	Carbon Steel	Type 3s	6.350	2 Set Screws at 90 Deg
		<i>0.795</i>		<i>0.500</i>			<i>0.250</i>	
# SP1-064-028B-011-064F-C	11	22.23	14.30	12.70	Carbon Steel	Type 3s	6.350	2 Set Screws at 90 Deg
		<i>0.875</i>		<i>0.500</i>			<i>0.250</i>	
# SP1-064-028B-012-064F-C	12	24.25	16.66	12.70	Carbon Steel	Type 3s	6.350	2 Set Screws at 90 Deg
		<i>0.955</i>		<i>0.500</i>			<i>0.250</i>	
SP1-064-028B-012-095F-C	12	24.25	16.66	12.70	Carbon Steel	Type 3s	9.525	2 Set Screws at 90 Deg
		<i>0.955</i>		<i>0.500</i>			<i>0.375</i>	
# SP1-064-028B-013-095F-C	13	26.27	16.66	12.70	Carbon Steel	Type 3s	9.525	2 Set Screws at 90 Deg
		<i>1.034</i>		<i>0.500</i>			<i>0.375</i>	
# SP1-064-028B-013-064F-C	13	26.27	18.26	12.70	Carbon Steel	Type 3s	6.350	2 Set Screws at 90 Deg
		<i>1.034</i>		<i>0.500</i>			<i>0.250</i>	
# SP1-064-028B-014-064F-C	14	28.29	20.65	12.70	Carbon Steel	Type 3s	6.350	2 Set Screws at 90 Deg
		<i>1.114</i>		<i>0.500</i>			<i>0.250</i>	

Indicates item not stocked at time of printing - Please enquire for lead time

Page 4 of 22

E&OE Pricing and all details subject to change without notice - Copyright Miniature Bearings Australia Pty Ltd
MBA Size Listings are a guide to sizes only and must not be solely relied on for critical design information.

Sprockets - 6.35 x 2.8mm - Simplex - Carbon Steel - Finished Bore

Part Number	Teeth No.	PCD mm	Hub Diameter (D1)	Overall Width (L) mm	Material mm	Type / Rows	Finished Bore (d) mm	Locking Method
		<i>inches</i>		<i>inches</i>	<i>inches</i>		<i>inches</i>	
# SP1-064-028B-014-095F-C	14	28.29	20.65	12.70	Carbon Steel	Type 3s	9.525	2 Set Screws at 90 Deg
		<i>1.114</i>		<i>0.500</i>			<i>0.375</i>	
# SP1-064-028B-014-127F-C	14	28.29	20.65	12.70	Carbon Steel	Type 3s	12.700	2 Set Screws at 90 Deg
		<i>1.114</i>		<i>0.500</i>			<i>0.500</i>	
# SP1-064-028B-015-095F-C	15	30.31	22.23	12.70	Carbon Steel	Type 3s	9.525	2 Set Screws at 90 Deg
		<i>1.193</i>		<i>0.500</i>			<i>0.375</i>	
# SP1-064-028B-015-127F-C	15	30.31	22.23	12.70	Carbon Steel	Type 3s	12.700	2 Set Screws at 90 Deg
		<i>1.193</i>		<i>0.500</i>			<i>0.500</i>	
SP1-064-028B-015-064F-C	15	30.31	22.23	12.70	Carbon Steel	Type 3s	6.350	2 Set Screws at 90 Deg
		<i>1.193</i>		<i>0.500</i>			<i>0.250</i>	
# SP1-064-028B-016-095F-C	16	32.33	24.61	12.70	Carbon Steel	Type 3s	9.525	2 Set Screws at 90 Deg
		<i>1.273</i>		<i>0.500</i>			<i>0.375</i>	
# SP1-064-028B-016-064F-C	16	32.33	24.61	12.70	Carbon Steel	Type 3s	6.350	2 Set Screws at 90 Deg
		<i>1.273</i>		<i>0.500</i>			<i>0.250</i>	
# SP1-064-028B-016-127F-C	16	32.33	24.61	12.70	Carbon Steel	Type 3s	12.700	2 Set Screws at 90 Deg
		<i>1.273</i>		<i>0.500</i>			<i>0.500</i>	

Indicates item not stocked at time of printing - Please enquire for lead time

Page 5 of 22

E&OE Pricing and all details subject to change without notice - Copyright Miniature Bearings Australia Pty Ltd

MBA Size Listings are a guide to sizes only and must not be solely relied on for critical design information.

Sprockets - 6.35 x 2.8mm - Simplex - Carbon Steel - Finished Bore

Part Number	Teeth No.	PCD mm	Hub Diameter (D1)	Overall Width (L) mm	Material mm	Type / Rows	Finished Bore (d) mm	Locking Method
		<i>inches</i>		<i>inches</i>	<i>inches</i>		<i>inches</i>	
# SP1-064-028B-017-127F-C	17	34.35	26.19	12.70	Carbon Steel	Type 3s	12.700	2 Set Screws at 90 Deg
		<i>1.352</i>		<i>0.500</i>			<i>0.500</i>	
# SP1-064-028B-017-095F-C	17	34.35	26.19	12.70	Carbon Steel	Type 3s	9.525	2 Set Screws at 90 Deg
		<i>1.352</i>		<i>0.500</i>			<i>0.375</i>	
# SP1-064-028B-017-159F-C	17	34.35	26.19	12.70	Carbon Steel	Type 3s	15.875	2 Set Screws at 90 Deg
		<i>1.352</i>		<i>0.500</i>			<i>0.625</i>	
# SP1-064-028B-017-064F-C	17	34.35	26.19	12.70	Carbon Steel	Type 3s	6.350	2 Set Screws at 90 Deg
		<i>1.352</i>		<i>0.500</i>			<i>0.250</i>	
# SP1-064-028B-018-127F-C	18	36.37	28.58	12.70	Carbon Steel	Type 3s	12.700	2 Set Screws at 90 Deg
		<i>1.432</i>		<i>0.500</i>			<i>0.500</i>	
# SP1-064-028B-018-159F-C	18	36.37	28.58	12.70	Carbon Steel	Type 3s	15.875	2 Set Screws at 90 Deg
		<i>1.432</i>		<i>0.500</i>			<i>0.625</i>	
# SP1-064-028B-018-191F-C	18	36.37	28.58	12.70	Carbon Steel	Type 3s	19.050	2 Set Screws at 90 Deg
		<i>1.432</i>		<i>0.500</i>			<i>0.750</i>	
# SP1-064-028B-018-064F-C	18	36.37	28.58	12.70	Carbon Steel	Type 3s	6.350	2 Set Screws at 90 Deg
		<i>1.432</i>		<i>0.500</i>			<i>0.250</i>	

Indicates item not stocked at time of printing - Please enquire for lead time

Page 6 of 22

E&OE Pricing and all details subject to change without notice - Copyright Miniature Bearings Australia Pty Ltd

MBA Size Listings are a guide to sizes only and must not be solely relied on for critical design information.

Sprockets - 6.35 x 2.8mm - Simplex - Carbon Steel - Finished Bore

Part Number	Teeth No.	PCD mm	Hub Diameter (D1)	Overall Width (L) mm	Material mm	Type / Rows	Finished Bore (d) mm	Locking Method
		<i>inches</i>		<i>inches</i>	<i>inches</i>		<i>inches</i>	
# SP1-064-028B-018-095F-C	18	36.37	28.58	12.70	Carbon Steel	Type 3s	9.525	2 Set Screws at 90 Deg
		<i>1.432</i>		<i>0.500</i>			<i>0.375</i>	
# SP1-064-028B-019-064F-C	19	38.39	30.96	12.70	Carbon Steel	Type 3s	6.350	2 Set Screws at 90 Deg
		<i>1.511</i>		<i>0.500</i>			<i>0.250</i>	
# SP1-064-028B-019-191F-C	19	38.39	30.96	12.70	Carbon Steel	Type 3s	19.050	2 Set Screws at 90 Deg
		<i>1.511</i>		<i>0.500</i>			<i>0.750</i>	
# SP1-064-028B-019-127F-C	19	38.39	30.96	12.70	Carbon Steel	Type 3s	12.700	2 Set Screws at 90 Deg
		<i>1.511</i>		<i>0.500</i>			<i>0.500</i>	
# SP1-064-028B-019-159F-C	19	38.39	30.96	12.70	Carbon Steel	Type 3s	15.875	2 Set Screws at 90 Deg
		<i>1.511</i>		<i>0.500</i>			<i>0.625</i>	
# SP1-064-028B-019-095F-C	19	38.39	30.96	12.70	Carbon Steel	Type 3s	9.525	2 Set Screws at 90 Deg
		<i>1.511</i>		<i>0.500</i>			<i>0.375</i>	
# SP1-064-028B-020-159F-C	20	40.41	32.54	15.88	Carbon Steel	Type 3s	15.875	2 Set Screws at 90 Deg
		<i>1.591</i>		<i>0.625</i>			<i>0.625</i>	
# SP1-064-028B-020-064F-C	20	40.41	32.54	15.88	Carbon Steel	Type 3s	6.350	2 Set Screws at 90 Deg
		<i>1.591</i>		<i>0.625</i>			<i>0.250</i>	

Indicates item not stocked at time of printing - Please enquire for lead time

Page 7 of 22

E&OE Pricing and all details subject to change without notice - Copyright Miniature Bearings Australia Pty Ltd

MBA Size Listings are a guide to sizes only and must not be solely relied on for critical design information.

Sprockets - 6.35 x 2.8mm - Simplex - Carbon Steel - Finished Bore

Part Number	Teeth No.	PCD mm	Hub Diameter (D1)	Overall Width (L) mm	Material mm	Type / Rows	Finished Bore (d) mm	Locking Method
		<i>inches</i>		<i>inches</i>	<i>inches</i>		<i>inches</i>	
# SP1-064-028B-020-191F-C	20	40.41	32.54	15.88	Carbon Steel	Type 3s	19.050	2 Set Screws at 90 Deg
		<i>1.591</i>		<i>0.625</i>			<i>0.750</i>	
# SP1-064-028B-020-127F-C	20	40.41	32.54	15.88	Carbon Steel	Type 3s	12.700	2 Set Screws at 90 Deg
		<i>1.591</i>		<i>0.625</i>			<i>0.500</i>	
# SP1-064-028B-020-222F-C	20	40.41	32.54	15.88	Carbon Steel	Type 3s	22.225	2 Set Screws at 90 Deg
		<i>1.591</i>		<i>0.625</i>			<i>0.875</i>	
# SP1-064-028B-020-095F-C	20	40.41	32.54	15.88	Carbon Steel	Type 3s	9.525	2 Set Screws at 90 Deg
		<i>1.591</i>		<i>0.625</i>			<i>0.375</i>	
# SP1-064-028B-021-222F-C	21	42.43	34.93	15.88	Carbon Steel	Type 3s	22.225	2 Set Screws at 90 Deg
		<i>1.670</i>		<i>0.625</i>			<i>0.875</i>	
# SP1-064-028B-021-064F-C	21	42.43	34.93	15.88	Carbon Steel	Type 3s	6.350	2 Set Screws at 90 Deg
		<i>1.670</i>		<i>0.625</i>			<i>0.250</i>	
# SP1-064-028B-021-191F-C	21	42.43	34.93	15.88	Carbon Steel	Type 3s	19.050	2 Set Screws at 90 Deg
		<i>1.670</i>		<i>0.625</i>			<i>0.750</i>	
# SP1-064-028B-021-127F-C	21	42.43	34.93	15.88	Carbon Steel	Type 3s	12.700	2 Set Screws at 90 Deg
		<i>1.670</i>		<i>0.625</i>			<i>0.500</i>	

Indicates item not stocked at time of printing - Please enquire for lead time

Page 8 of 22

E&OE Pricing and all details subject to change without notice - Copyright Miniature Bearings Australia Pty Ltd

MBA Size Listings are a guide to sizes only and must not be solely relied on for critical design information.

Sprockets - 6.35 x 2.8mm - Simplex - Carbon Steel - Finished Bore

Part Number	Teeth No.	PCD mm	Hub Diameter (D1)	Overall Width (L) mm	Material mm	Type / Rows	Finished Bore (d) mm	Locking Method
		<i>inches</i>		<i>inches</i>	<i>inches</i>		<i>inches</i>	
# SP1-064-028B-021-159F-C	21	42.43	34.93	15.88	Carbon Steel	Type 3s	15.875	2 Set Screws at 90 Deg
		<i>1.670</i>		<i>0.625</i>			<i>0.625</i>	
# SP1-064-028B-021-095F-C	21	42.43	34.93	15.88	Carbon Steel	Type 3s	9.525	2 Set Screws at 90 Deg
		<i>1.670</i>		<i>0.625</i>			<i>0.375</i>	
# SP1-064-028B-022-127F-C	22	44.45	36.53	15.88	Carbon Steel	Type 3s	12.700	2 Set Screws at 90 Deg
		<i>1.750</i>		<i>0.625</i>			<i>0.500</i>	
# SP1-064-028B-022-064F-C	22	44.45	36.53	15.88	Carbon Steel	Type 3s	6.350	2 Set Screws at 90 Deg
		<i>1.750</i>		<i>0.625</i>			<i>0.250</i>	
# SP1-064-028B-022-159F-C	22	44.45	36.53	15.88	Carbon Steel	Type 3s	15.875	2 Set Screws at 90 Deg
		<i>1.750</i>		<i>0.625</i>			<i>0.625</i>	
# SP1-064-028B-022-095F-C	22	44.45	36.53	15.88	Carbon Steel	Type 3s	9.525	2 Set Screws at 90 Deg
		<i>1.750</i>		<i>0.625</i>			<i>0.375</i>	
# SP1-064-028B-022-222F-C	22	44.45	36.53	15.88	Carbon Steel	Type 3s	22.225	2 Set Screws at 90 Deg
		<i>1.750</i>		<i>0.625</i>			<i>0.875</i>	
# SP1-064-028B-022-191F-C	22	44.45	36.53	15.88	Carbon Steel	Type 3s	19.050	2 Set Screws at 90 Deg
		<i>1.750</i>		<i>0.625</i>			<i>0.750</i>	

Indicates item not stocked at time of printing - Please enquire for lead time

Page 9 of 22

E&OE Pricing and all details subject to change without notice - Copyright Miniature Bearings Australia Pty Ltd

MBA Size Listings are a guide to sizes only and must not be solely relied on for critical design information.

Sprockets - 6.35 x 2.8mm - Simplex - Carbon Steel - Finished Bore

Part Number	Teeth No.	PCD mm	Hub Diameter (D1)	Overall Width (L) mm	Material mm	Type / Rows	Finished Bore (d) mm	Locking Method
		<i>inches</i>		<i>inches</i>	<i>inches</i>		<i>inches</i>	
# SP1-064-028B-023-159F-C	23	46.47	38.10	15.88	Carbon Steel	Type 3s	15.875	2 Set Screws at 90 Deg
		<i>1.830</i>		<i>0.625</i>			<i>0.625</i>	
# SP1-064-028B-023-222F-C	23	46.47	38.10	15.88	Carbon Steel	Type 3s	22.225	2 Set Screws at 90 Deg
		<i>1.830</i>		<i>0.625</i>			<i>0.875</i>	
# SP1-064-028B-023-064F-C	23	46.47	38.10	15.88	Carbon Steel	Type 3s	6.350	2 Set Screws at 90 Deg
		<i>1.830</i>		<i>0.625</i>			<i>0.250</i>	
# SP1-064-028B-023-254F-C	23	46.47	38.10	15.88	Carbon Steel	Type 3s	25.400	2 Set Screws at 90 Deg
		<i>1.830</i>		<i>0.625</i>			<i>1.000</i>	
# SP1-064-028B-023-191F-C	23	46.47	38.10	15.88	Carbon Steel	Type 3s	19.050	2 Set Screws at 90 Deg
		<i>1.830</i>		<i>0.625</i>			<i>0.750</i>	
# SP1-064-028B-023-127F-C	23	46.47	38.10	15.88	Carbon Steel	Type 3s	12.700	2 Set Screws at 90 Deg
		<i>1.830</i>		<i>0.625</i>			<i>0.500</i>	
# SP1-064-028B-023-095F-C	23	46.47	38.10	15.88	Carbon Steel	Type 3s	9.525	2 Set Screws at 90 Deg
		<i>1.830</i>		<i>0.625</i>			<i>0.375</i>	
# SP1-064-028B-024-254F-C	24	48.49	38.10	15.88	Carbon Steel	Type 3s	25.400	2 Set Screws at 90 Deg
		<i>1.909</i>		<i>0.625</i>			<i>1.000</i>	

Indicates item not stocked at time of printing - Please enquire for lead time

Page 10 of 22

E&OE Pricing and all details subject to change without notice - Copyright Miniature Bearings Australia Pty Ltd

MBA Size Listings are a guide to sizes only and must not be solely relied on for critical design information.

Sprockets - 6.35 x 2.8mm - Simplex - Carbon Steel - Finished Bore

Part Number	Teeth No.	PCD mm	Hub Diameter (D1)	Overall Width (L) mm	Material mm	Type / Rows	Finished Bore (d) mm	Locking Method
		<i>inches</i>		<i>inches</i>	<i>inches</i>		<i>inches</i>	
# SP1-064-028B-024-191F-C	24	48.49	38.10	15.88	Carbon Steel	Type 3s	19.050	2 Set Screws at 90 Deg
		<i>1.909</i>		<i>0.625</i>			<i>0.750</i>	
# SP1-064-028B-024-222F-C	24	48.49	38.10	15.88	Carbon Steel	Type 3s	22.225	2 Set Screws at 90 Deg
		<i>1.909</i>		<i>0.625</i>			<i>0.875</i>	
# SP1-064-028B-024-095F-C	24	48.49	38.10	15.88	Carbon Steel	Type 3s	9.525	2 Set Screws at 90 Deg
		<i>1.909</i>		<i>0.625</i>			<i>0.375</i>	
# SP1-064-028B-024-127F-C	24	48.49	38.10	15.88	Carbon Steel	Type 3s	12.700	2 Set Screws at 90 Deg
		<i>1.909</i>		<i>0.625</i>			<i>0.500</i>	
# SP1-064-028B-024-159F-C	24	48.49	38.10	15.88	Carbon Steel	Type 3s	15.875	2 Set Screws at 90 Deg
		<i>1.909</i>		<i>0.625</i>			<i>0.625</i>	
# SP1-064-028B-025-222F-C	25	50.51	38.10	15.88	Carbon Steel	Type 3s	22.225	2 Set Screws at 90 Deg
		<i>1.989</i>		<i>0.625</i>			<i>0.875</i>	
# SP1-064-028B-025-159F-C	25	50.51	38.10	15.88	Carbon Steel	Type 3s	15.875	2 Set Screws at 90 Deg
		<i>1.989</i>		<i>0.625</i>			<i>0.625</i>	
# SP1-064-028B-025-254F-C	25	50.51	38.10	15.88	Carbon Steel	Type 3s	25.400	2 Set Screws at 90 Deg
		<i>1.989</i>		<i>0.625</i>			<i>1.000</i>	

Indicates item not stocked at time of printing - Please enquire for lead time

Page 11 of 22

E&OE Pricing and all details subject to change without notice - Copyright Miniature Bearings Australia Pty Ltd

MBA Size Listings are a guide to sizes only and must not be solely relied on for critical design information.

Sprockets - 6.35 x 2.8mm - Simplex - Carbon Steel - Finished Bore

Part Number	Teeth No.	PCD mm	Hub Diameter (D1)	Overall Width (L) mm	Material mm	Type / Rows	Finished Bore (d) mm	Locking Method
		<i>inches</i>		<i>inches</i>	<i>inches</i>		<i>inches</i>	
# SP1-064-028B-025-191F-C	25	50.51	38.10	15.88	Carbon Steel	Type 3s	19.050	2 Set Screws at 90 Deg
		<i>1.989</i>		<i>0.625</i>			<i>0.750</i>	
# SP1-064-028B-025-095F-C	25	50.51	38.10	15.88	Carbon Steel	Type 3s	9.525	2 Set Screws at 90 Deg
		<i>1.989</i>		<i>0.625</i>			<i>0.375</i>	
# SP1-064-028B-025-127F-C	25	50.51	38.10	15.88	Carbon Steel	Type 3s	12.700	2 Set Screws at 90 Deg
		<i>1.989</i>		<i>0.625</i>			<i>0.500</i>	
# SP1-064-028B-026-222F-C	26	52.53	38.10	15.88	Carbon Steel	Type 3s	22.225	2 Set Screws at 90 Deg
		<i>2.068</i>		<i>0.625</i>			<i>0.875</i>	
# SP1-064-028B-026-095F-C	26	52.53	38.10	15.88	Carbon Steel	Type 3s	9.525	2 Set Screws at 90 Deg
		<i>2.068</i>		<i>0.625</i>			<i>0.375</i>	
# SP1-064-028B-026-159F-C	26	52.53	38.10	15.88	Carbon Steel	Type 3s	15.875	2 Set Screws at 90 Deg
		<i>2.068</i>		<i>0.625</i>			<i>0.625</i>	
# SP1-064-028B-026-191F-C	26	52.53	38.10	15.88	Carbon Steel	Type 3s	19.050	2 Set Screws at 90 Deg
		<i>2.068</i>		<i>0.625</i>			<i>0.750</i>	
# SP1-064-028B-026-254F-C	26	52.53	38.10	15.88	Carbon Steel	Type 3s	25.400	2 Set Screws at 90 Deg
		<i>2.068</i>		<i>0.625</i>			<i>1.000</i>	

Indicates item not stocked at time of printing - Please enquire for lead time

Page 12 of 22

E&OE Pricing and all details subject to change without notice - Copyright Miniature Bearings Australia Pty Ltd

MBA Size Listings are a guide to sizes only and must not be solely relied on for critical design information.

Sprockets - 6.35 x 2.8mm - Simplex - Carbon Steel - Finished Bore

Part Number	Teeth No.	PCD mm	Hub Diameter (D1)	Overall Width (L) mm	Material mm	Type / Rows	Finished Bore (d) mm	Locking Method
		<i>inches</i>		<i>inches</i>	<i>inches</i>		<i>inches</i>	
# SP1-064-028B-026-127F-C	26	52.53	38.10	15.88	Carbon Steel	Type 3s	12.700	2 Set Screws at 90 Deg
		<i>2.068</i>		<i>0.625</i>			<i>0.500</i>	
# SP1-064-028B-028-191F-C	28	56.57	38.10	15.88	Carbon Steel	Type 3s	19.050	2 Set Screws at 90 Deg
		<i>2.227</i>		<i>0.625</i>			<i>0.750</i>	
# SP1-064-028B-028-159F-C	28	56.57	38.10	15.88	Carbon Steel	Type 3s	15.875	2 Set Screws at 90 Deg
		<i>2.227</i>		<i>0.625</i>			<i>0.625</i>	
# SP1-064-028B-028-222F-C	28	56.57	38.10	15.88	Carbon Steel	Type 3s	22.225	2 Set Screws at 90 Deg
		<i>2.227</i>		<i>0.625</i>			<i>0.875</i>	
# SP1-064-028B-028-127F-C	28	56.57	38.10	15.88	Carbon Steel	Type 3s	12.700	2 Set Screws at 90 Deg
		<i>2.227</i>		<i>0.625</i>			<i>0.500</i>	
# SP1-064-028B-028-254F-C	28	56.57	38.10	15.88	Carbon Steel	Type 3s	25.400	2 Set Screws at 90 Deg
		<i>2.227</i>		<i>0.625</i>			<i>1.000</i>	
# SP1-064-028B-028-095F-C	28	56.57	38.10	15.88	Carbon Steel	Type 3s	9.525	2 Set Screws at 90 Deg
		<i>2.227</i>		<i>0.625</i>			<i>0.375</i>	
# SP1-064-028B-030-254F-C	30	60.61	38.10	15.88	Carbon Steel	Type 3s	25.400	2 Set Screws at 90 Deg
		<i>2.386</i>		<i>0.625</i>			<i>1.000</i>	

Indicates item not stocked at time of printing - Please enquire for lead time

Page 13 of 22

E&OE Pricing and all details subject to change without notice - Copyright Miniature Bearings Australia Pty Ltd

MBA Size Listings are a guide to sizes only and must not be solely relied on for critical design information.

Sprockets - 6.35 x 2.8mm - Simplex - Carbon Steel - Finished Bore

Part Number	Teeth No.	PCD mm	Hub Diameter (D1)	Overall Width (L) mm	Material mm	Type / Rows	Finished Bore (d) mm	Locking Method
		<i>inches</i>		<i>inches</i>	<i>inches</i>		<i>inches</i>	
# SP1-064-028B-030-191F-C	30	60.61	38.10	15.88	Carbon Steel	Type 3s	19.050	2 Set Screws at 90 Deg
		<i>2.386</i>		<i>0.625</i>			<i>0.750</i>	
# SP1-064-028B-030-159F-C	30	60.61	38.10	15.88	Carbon Steel	Type 3s	15.875	2 Set Screws at 90 Deg
		<i>2.386</i>		<i>0.625</i>			<i>0.625</i>	
# SP1-064-028B-030-127F-C	30	60.61	38.10	15.88	Carbon Steel	Type 3s	12.700	2 Set Screws at 90 Deg
		<i>2.386</i>		<i>0.625</i>			<i>0.500</i>	
# SP1-064-028B-030-095F-C	30	60.61	38.10	15.88	Carbon Steel	Type 3s	9.525	2 Set Screws at 90 Deg
		<i>2.386</i>		<i>0.625</i>			<i>0.375</i>	
# SP1-064-028B-030-222F-C	30	60.61	38.10	15.88	Carbon Steel	Type 3s	22.225	2 Set Screws at 90 Deg
		<i>2.386</i>		<i>0.625</i>			<i>0.875</i>	
# SP1-064-028B-032-095F-C	32	64.65	38.10	15.88	Carbon Steel	Type 3s	9.525	2 Set Screws at 90 Deg
		<i>2.545</i>		<i>0.625</i>			<i>0.375</i>	
# SP1-064-028B-032-159F-C	32	64.65	38.10	15.88	Carbon Steel	Type 3s	15.875	2 Set Screws at 90 Deg
		<i>2.545</i>		<i>0.625</i>			<i>0.625</i>	
# SP1-064-028B-032-127F-C	32	64.65	38.10	15.88	Carbon Steel	Type 3s	12.700	2 Set Screws at 90 Deg
		<i>2.545</i>		<i>0.625</i>			<i>0.500</i>	

Indicates item not stocked at time of printing - Please enquire for lead time

Page 14 of 22

E&OE Pricing and all details subject to change without notice - Copyright Miniature Bearings Australia Pty Ltd

MBA Size Listings are a guide to sizes only and must not be solely relied on for critical design information.

Sprockets - 6.35 x 2.8mm - Simplex - Carbon Steel - Finished Bore

Part Number	Teeth No.	PCD mm	Hub Diameter (D1)	Overall Width (L) mm	Material mm	Type / Rows	Finished Bore (d) mm	Locking Method
		<i>inches</i>		<i>inches</i>	<i>inches</i>		<i>inches</i>	
# SP1-064-028B-032-191F-C	32	64.65	38.10	15.88	Carbon Steel	Type 3s	19.050	2 Set Screws at 90 Deg
		<i>2.545</i>		<i>0.625</i>			<i>0.750</i>	
# SP1-064-028B-032-254F-C	32	64.65	38.10	15.88	Carbon Steel	Type 3s	25.400	2 Set Screws at 90 Deg
		<i>2.545</i>		<i>0.625</i>			<i>1.000</i>	
# SP1-064-028B-032-222F-C	32	64.65	38.10	15.88	Carbon Steel	Type 3s	22.225	2 Set Screws at 90 Deg
		<i>2.545</i>		<i>0.625</i>			<i>0.875</i>	
# SP1-064-028B-036-254F-C	36	72.74	38.10	19.05	Carbon Steel	Type 3s	25.400	2 Set Screws at 90 Deg
		<i>2.864</i>		<i>0.750</i>			<i>1.000</i>	
# SP1-064-028B-036-127F-C	36	72.74	38.10	19.05	Carbon Steel	Type 3s	12.700	2 Set Screws at 90 Deg
		<i>2.864</i>		<i>0.750</i>			<i>0.500</i>	
# SP1-064-028B-036-159F-C	36	72.74	38.10	19.05	Carbon Steel	Type 3s	15.875	2 Set Screws at 90 Deg
		<i>2.864</i>		<i>0.750</i>			<i>0.625</i>	
# SP1-064-028B-036-191F-C	36	72.74	38.10	19.05	Carbon Steel	Type 3s	19.050	2 Set Screws at 90 Deg
		<i>2.864</i>		<i>0.750</i>			<i>0.750</i>	
# SP1-064-028B-036-095F-C	36	72.74	38.10	19.05	Carbon Steel	Type 3s	9.525	2 Set Screws at 90 Deg
		<i>2.864</i>		<i>0.750</i>			<i>0.375</i>	

Indicates item not stocked at time of printing - Please enquire for lead time

Page 15 of 22

E&OE Pricing and all details subject to change without notice - Copyright Miniature Bearings Australia Pty Ltd

MBA Size Listings are a guide to sizes only and must not be solely relied on for critical design information.

Sprockets - 6.35 x 2.8mm - Simplex - Carbon Steel - Finished Bore

Part Number	Teeth No.	PCD mm	Hub Diameter (D1)	Overall Width (L) mm	Material mm	Type / Rows	Finished Bore (d) mm	Locking Method
		<i>inches</i>		<i>inches</i>	<i>inches</i>		<i>inches</i>	
# SP1-064-028B-036-222F-C	36	72.74	38.10	19.05	Carbon Steel	Type 3s	22.225	2 Set Screws at 90 Deg
		<i>2.864</i>		<i>0.750</i>			<i>0.875</i>	
# SP1-064-028B-040-127F-C	40	80.82	50.80	19.05	Carbon Steel	Type 3s	12.700	2 Set Screws at 90 Deg
		<i>3.182</i>		<i>0.750</i>			<i>0.500</i>	
# SP1-064-028B-040-222F-C	40	80.82	50.80	19.05	Carbon Steel	Type 3s	22.225	2 Set Screws at 90 Deg
		<i>3.182</i>		<i>0.750</i>			<i>0.875</i>	
# SP1-064-028B-040-318F-C	40	80.82	50.80	19.05	Carbon Steel	Type 3s	31.750	2 Set Screws at 90 Deg
		<i>3.182</i>		<i>0.750</i>			<i>1.250</i>	
# SP1-064-028B-040-191F-C	40	80.82	50.80	19.05	Carbon Steel	Type 3s	19.050	2 Set Screws at 90 Deg
		<i>3.182</i>		<i>0.750</i>			<i>0.750</i>	
# SP1-064-028B-040-159F-C	40	80.82	50.80	19.05	Carbon Steel	Type 3s	15.875	2 Set Screws at 90 Deg
		<i>3.182</i>		<i>0.750</i>			<i>0.625</i>	
# SP1-064-028B-040-349F-C	40	80.82	50.80	19.05	Carbon Steel	Type 3s	34.925	2 Set Screws at 90 Deg
		<i>3.182</i>		<i>0.750</i>			<i>1.375</i>	
# SP1-064-028B-040-254F-C	40	80.82	50.80	19.05	Carbon Steel	Type 3s	25.400	2 Set Screws at 90 Deg
		<i>3.182</i>		<i>0.750</i>			<i>1.000</i>	

Indicates item not stocked at time of printing - Please enquire for lead time

Page 16 of 22

E&OE Pricing and all details subject to change without notice - Copyright Miniature Bearings Australia Pty Ltd

MBA Size Listings are a guide to sizes only and must not be solely relied on for critical design information.

Sprockets - 6.35 x 2.8mm - Simplex - Carbon Steel - Finished Bore

Part Number	Teeth No.	PCD mm	Hub Diameter (D1)	Overall Width (L) mm	Material mm	Type / Rows	Finished Bore (d) mm	Locking Method
		<i>inches</i>		<i>inches</i>	<i>inches</i>		<i>inches</i>	
# SP1-064-028B-045-222F-C	45	90.92	50.80	19.05	Carbon Steel	Type 3s	22.225	2 Set Screws at 90 Deg
		<i>3.580</i>		<i>0.750</i>			<i>0.875</i>	
# SP1-064-028B-045-318F-C	45	90.92	50.80	19.05	Carbon Steel	Type 3s	31.750	2 Set Screws at 90 Deg
		<i>3.580</i>		<i>0.750</i>			<i>1.250</i>	
# SP1-064-028B-045-159F-C	45	90.92	50.80	19.05	Carbon Steel	Type 3s	15.875	2 Set Screws at 90 Deg
		<i>3.580</i>		<i>0.750</i>			<i>0.625</i>	
# SP1-064-028B-045-127F-C	45	90.92	50.80	19.05	Carbon Steel	Type 3s	12.700	2 Set Screws at 90 Deg
		<i>3.580</i>		<i>0.750</i>			<i>0.500</i>	
# SP1-064-028B-045-254F-C	45	90.92	50.80	19.05	Carbon Steel	Type 3s	25.400	2 Set Screws at 90 Deg
		<i>3.580</i>		<i>0.750</i>			<i>1.000</i>	
# SP1-064-028B-045-191F-C	45	90.92	50.80	19.05	Carbon Steel	Type 3s	19.050	2 Set Screws at 90 Deg
		<i>3.580</i>		<i>0.750</i>			<i>0.750</i>	
# SP1-064-028B-045-349F-C	45	90.92	50.80	19.05	Carbon Steel	Type 3s	34.925	2 Set Screws at 90 Deg
		<i>3.580</i>		<i>0.750</i>			<i>1.375</i>	
# SP1-064-028B-048-191F-C	48	96.98	50.80	19.05	Carbon Steel	Type 3s	19.050	2 Set Screws at 90 Deg
		<i>3.818</i>		<i>0.750</i>			<i>0.750</i>	

Indicates item not stocked at time of printing - Please enquire for lead time

Page 17 of 22

E&OE Pricing and all details subject to change without notice - Copyright Miniature Bearings Australia Pty Ltd

MBA Size Listings are a guide to sizes only and must not be solely relied on for critical design information.

Sprockets - 6.35 x 2.8mm - Simplex - Carbon Steel - Finished Bore

Part Number	Teeth No.	PCD mm	Hub Diameter (D1)	Overall Width (L) mm	Material mm	Type / Rows	Finished Bore (d) mm	Locking Method
		<i>inches</i>		<i>inches</i>	<i>inches</i>		<i>inches</i>	
# SP1-064-028B-048-349F-C	48	96.98	50.80	19.05	Carbon Steel	Type 3s	34.925	2 Set Screws at 90 Deg
		<i>3.818</i>		<i>0.750</i>			<i>1.375</i>	
# SP1-064-028B-048-318F-C	48	96.98	50.80	19.05	Carbon Steel	Type 3s	31.750	2 Set Screws at 90 Deg
		<i>3.818</i>		<i>0.750</i>			<i>1.250</i>	
# SP1-064-028B-048-254F-C	48	96.98	50.80	19.05	Carbon Steel	Type 3s	25.400	2 Set Screws at 90 Deg
		<i>3.818</i>		<i>0.750</i>			<i>1.000</i>	
# SP1-064-028B-048-159F-C	48	96.98	50.80	19.05	Carbon Steel	Type 3s	15.875	2 Set Screws at 90 Deg
		<i>3.818</i>		<i>0.750</i>			<i>0.625</i>	
# SP1-064-028B-048-127F-C	48	96.98	50.80	19.05	Carbon Steel	Type 3s	12.700	2 Set Screws at 90 Deg
		<i>3.818</i>		<i>0.750</i>			<i>0.500</i>	
# SP1-064-028B-054-349F-C	54	109.1	50.80	19.05	Carbon Steel	Type 3s	34.925	2 Set Screws at 90 Deg
		<i>4.295</i>		<i>0.750</i>			<i>1.375</i>	
# SP1-064-028B-054-254F-C	54	109.1	50.80	19.05	Carbon Steel	Type 3s	25.400	2 Set Screws at 90 Deg
		<i>4.295</i>		<i>0.750</i>			<i>1.000</i>	
# SP1-064-028B-054-127F-C	54	109.1	50.80	19.05	Carbon Steel	Type 3s	12.700	2 Set Screws at 90 Deg
		<i>4.295</i>		<i>0.750</i>			<i>0.500</i>	

Indicates item not stocked at time of printing - Please enquire for lead time

Page 18 of 22

E&OE Pricing and all details subject to change without notice - Copyright Miniature Bearings Australia Pty Ltd

MBA Size Listings are a guide to sizes only and must not be solely relied on for critical design information.

Sprockets - 6.35 x 2.8mm - Simplex - Carbon Steel - Finished Bore

Part Number	Teeth No.	PCD mm	Hub Diameter (D1)	Overall Width (L) mm	Material mm	Type / Rows	Finished Bore (d) mm	Locking Method
		<i>inches</i>		<i>inches</i>	<i>inches</i>		<i>inches</i>	
# SP1-064-028B-054-191F-C	54	109.1	50.80	19.05	Carbon Steel	Type 3s	19.050	2 Set Screws at 90 Deg
		<i>4.295</i>		<i>0.750</i>			<i>0.750</i>	
# SP1-064-028B-054-318F-C	54	109.1	50.80	19.05	Carbon Steel	Type 3s	31.750	2 Set Screws at 90 Deg
		<i>4.295</i>		<i>0.750</i>			<i>1.250</i>	
# SP1-064-028B-054-222F-C	54	109.1	50.80	19.05	Carbon Steel	Type 3s	22.225	2 Set Screws at 90 Deg
		<i>4.295</i>		<i>0.750</i>			<i>0.875</i>	
# SP1-064-028B-054-159F-C	54	109.1	50.80	22.23	Carbon Steel	Type 3s	15.875	2 Set Screws at 90 Deg
		<i>4.295</i>		<i>0.875</i>			<i>0.625</i>	
# SP1-064-028B-060-191F-C	60	121.23	50.80	19.05	Carbon Steel	Type 3s	19.050	2 Set Screws at 90 Deg
		<i>4.773</i>		<i>0.750</i>			<i>0.750</i>	
# SP1-064-028B-060-222F-C	60	121.23	50.80	19.05	Carbon Steel	Type 3s	22.225	2 Set Screws at 90 Deg
		<i>4.773</i>		<i>0.750</i>			<i>0.875</i>	
# SP1-064-028B-060-159F-C	60	121.23	50.80	19.05	Carbon Steel	Type 3s	15.875	2 Set Screws at 90 Deg
		<i>4.773</i>		<i>0.750</i>			<i>0.625</i>	
# SP1-064-028B-060-127F-C	60	121.23	50.80	19.05	Carbon Steel	Type 3s	12.700	2 Set Screws at 90 Deg
		<i>4.773</i>		<i>0.750</i>			<i>0.500</i>	

Indicates item not stocked at time of printing - Please enquire for lead time

Page 19 of 22

E&OE Pricing and all details subject to change without notice - Copyright Miniature Bearings Australia Pty Ltd

MBA Size Listings are a guide to sizes only and must not be solely relied on for critical design information.

Sprockets - 6.35 x 2.8mm - Simplex - Carbon Steel - Finished Bore

Part Number	Teeth No.	PCD mm	Hub Diameter (D1)	Overall Width (L) mm	Material mm	Type / Rows	Finished Bore (d) mm	Locking Method
		<i>inches</i>		<i>inches</i>	<i>inches</i>		<i>inches</i>	
# SP1-064-028B-060-349F-C	60	121.23	50.80	19.05	Carbon Steel	Type 3s	34.925	2 Set Screws at 90 Deg
		<i>4.773</i>		<i>0.750</i>			<i>1.375</i>	
# SP1-064-028B-060-254F-C	60	121.23	50.80	19.05	Carbon Steel	Type 3s	25.400	2 Set Screws at 90 Deg
		<i>4.773</i>		<i>0.750</i>			<i>1.000</i>	
# SP1-064-028B-060-318F-C	60	121.23	50.80	19.05	Carbon Steel	Type 3s	31.750	2 Set Screws at 90 Deg
		<i>4.773</i>		<i>0.750</i>			<i>1.250</i>	
# SP1-064-028B-070-191F-C	70	141.43	50.80	19.05	Carbon Steel	Type 3s	19.050	2 Set Screws at 90 Deg
		<i>5.568</i>		<i>0.750</i>			<i>0.750</i>	
# SP1-064-028B-070-318F-C	70	141.43	50.80	19.05	Carbon Steel	Type 3s	31.750	2 Set Screws at 90 Deg
		<i>5.568</i>		<i>0.750</i>			<i>1.250</i>	
# SP1-064-028B-070-349F-C	70	141.43	50.80	19.05	Carbon Steel	Type 3s	34.925	2 Set Screws at 90 Deg
		<i>5.568</i>		<i>0.750</i>			<i>1.375</i>	
# SP1-064-028B-070-254F-C	70	141.43	50.80	19.05	Carbon Steel	Type 3s	25.400	2 Set Screws at 90 Deg
		<i>5.568</i>		<i>0.750</i>			<i>1.000</i>	
# SP1-064-028B-070-222F-C	70	141.43	50.80	19.05	Carbon Steel	Type 3s	22.225	2 Set Screws at 90 Deg
		<i>5.568</i>		<i>0.750</i>			<i>0.875</i>	

Indicates item not stocked at time of printing - Please enquire for lead time

Page 20 of 22

E&OE Pricing and all details subject to change without notice - Copyright Miniature Bearings Australia Pty Ltd

MBA Size Listings are a guide to sizes only and must not be solely relied on for critical design information.

Sprockets - 6.35 x 2.8mm - Simplex - Carbon Steel - Finished Bore

Part Number	Teeth No.	PCD mm	Hub Diameter (D1)	Overall Width (L) mm	Material mm	Type / Rows	Finished Bore (d) mm	Locking Method
		<i>inches</i>		<i>inches</i>	<i>inches</i>		<i>inches</i>	
# SP1-064-028B-070-127F-C	70	141.43	50.80	19.05	Carbon Steel	Type 3s	12.700	2 Set Screws at 90 Deg
		<i>5.568</i>		<i>0.750</i>			<i>0.500</i>	
# SP1-064-028B-070-159F-C	70	141.43	50.80	19.05	Carbon Steel	Type 3s	15.875	2 Set Screws at 90 Deg
		<i>5.568</i>		<i>0.750</i>			<i>0.625</i>	
# SP1-064-028B-072-191F-C	72	145.47	50.80	19.05	Carbon Steel	Type 3s	19.050	2 Set Screws at 90 Deg
		<i>5.727</i>		<i>0.750</i>			<i>0.750</i>	
# SP1-064-028B-072-318F-C	72	145.47	50.80	19.05	Carbon Steel	Type 3s	31.750	2 Set Screws at 90 Deg
		<i>5.727</i>		<i>0.750</i>			<i>1.250</i>	
# SP1-064-028B-072-254F-C	72	145.47	50.80	19.05	Carbon Steel	Type 3s	25.400	2 Set Screws at 90 Deg
		<i>5.727</i>		<i>0.750</i>			<i>1.000</i>	
# SP1-064-028B-072-127F-C	72	145.47	50.80	19.05	Carbon Steel	Type 3s	12.700	2 Set Screws at 90 Deg
		<i>5.727</i>		<i>0.750</i>			<i>0.500</i>	
# SP1-064-028B-072-159F-C	72	145.47	50.80	19.05	Carbon Steel	Type 3s	15.875	2 Set Screws at 90 Deg
		<i>5.727</i>		<i>0.750</i>			<i>0.625</i>	
# SP1-064-028B-072-222F-C	72	145.47	50.80	19.05	Carbon Steel	Type 3s	22.225	2 Set Screws at 90 Deg
		<i>5.727</i>		<i>0.750</i>			<i>0.875</i>	

Indicates item not stocked at time of printing - Please enquire for lead time

Page 21 of 22

E&OE Pricing and all details subject to change without notice - Copyright Miniature Bearings Australia Pty Ltd

MBA Size Listings are a guide to sizes only and must not be solely relied on for critical design information.

Sprockets - 6.35 x 2.8mm - Simplex - Carbon Steel - Finished Bore

Part Number	Teeth No.	PCD mm	Hub Diameter (D1)	Overall Width (L) mm	Material mm	Type / Rows	Finished Bore (d) mm	Locking Method
		<i>inches</i>		<i>inches</i>	<i>inches</i>		<i>inches</i>	
# SP1-064-028B-072-349F-C	72	145.47	50.80	19.05	Carbon Steel	Type 3s	34.925	2 Set Screws at 90 Deg
		<i>5.727</i>		<i>0.750</i>			<i>1.375</i>	

Indicates item not stocked at time of printing - Please enquire for lead time

E&OE Pricing and all details subject to change without notice - Copyright Miniature Bearings Australia Pty Ltd

MBA Size Listings are a guide to sizes only and must not be solely relied on for critical design information.

DISTRIBUTED BY

Distributed By:

