

Sprockets - 6.35 x 2.8mm - Simplex - Plastic

10/4/2018

Indicates item not stocked at time of printing - Please enquire for lead time

E&OE Pricing and all details subject to change without notice - Copyright Miniature Bearings Australia Pty Ltd

MBA Size Listings are a guide to sizes only and must not be solely relied on for critical design information.

Page 1 of 12

INFORMATION

Nylon - Acetal - With and without bore inserts.

Match with series 6.35mm plastic or steel chain (25-1 ASA)

American Standard 25-1 - 1/4 inch

This catalogue to be read in conjunction with information at <http://www.minibearings.com.au//item/ch1064032r304825a/chainrollermetalsimplex/>

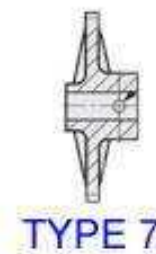
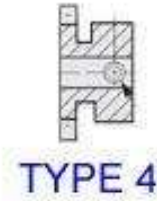
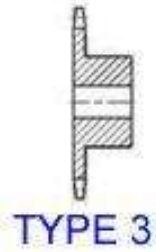
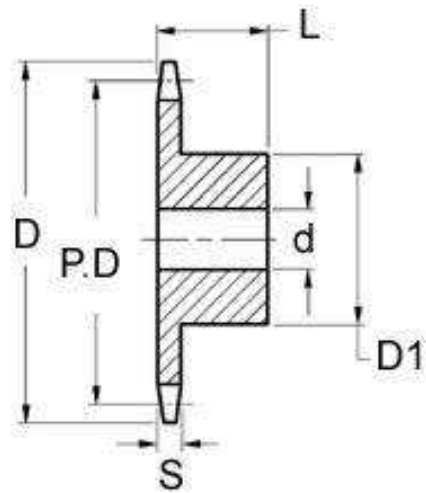
<http://www.minibearings.com.au//item/ch1064032r030425ass/chainrollermetalsimplexstainlesssteel/>

<http://www.minibearings.com.au//item/ch1064032r030525aac/chainrollerplasticsimplex/>

Indicates item not stocked at time of printing - Please enquire for lead time

E&OE Pricing and all details subject to change without notice - Copyright Miniature Bearings Australia Pty Ltd

MBA Size Listings are a guide to sizes only and must not be solely relied on for critical design information.



Indicates item not stocked at time of printing - Please enquire for lead time

E&OE Pricing and all details subject to change without notice - Copyright Miniature Bearings Australia Pty Ltd
 MBA Size Listings are a guide to sizes only and must not be solely relied on for critical design information.

Sprockets - 6.35 x 2.8mm - Simplex - Plastic

Part Number	Teeth No.	PCD mm	Hub Diameter (D1)	Overall Width (L) mm	Material mm	Type / Rows	Bore (d)	Locking Method
		<i>inches</i>		<i>inches</i>	<i>inches</i>			
SP1-064-028B-009-064-NF	9	18.18	20.65	13.89	Nylon With Fiberglass	Type 4	6.363	Set Screw
		<i>0.716</i>		<i>0.547</i>				
SP1-064-028B-010-060-AWIN	10	20.20	12.00	9.50	Acetal - White - Aluminium Insert	Type 8	6.000	Set Screw
		<i>0.795</i>		<i>0.374</i>				
# SP1-064-028B-010-080-AWIN	10	20.20	12.00	9.50	Acetal - White - Aluminium Insert	Type 8	8.000	Set Screw
		<i>0.795</i>		<i>0.374</i>				
# SP1-064-028B-010-064-AW	10	20.20	12.29	9.53	Acetal - White	Type 3	6.350	No Locking
		<i>0.795</i>		<i>0.375</i>				
SP1-064-028B-010-064-NF	10	20.20	20.65	13.89	Nylon With Fiberglass	Type 4	6.363	Set Screw
		<i>0.795</i>		<i>0.547</i>				
# SP1-064-028B-011-064-NF	11	22.23	20.65	13.89	Nylon With Fiberglass	Type 4	6.363	Set Screw
		<i>0.875</i>		<i>0.547</i>				
# SP1-064-028B-012-080-AWIN	12	24.25	15.00	9.50	Acetal - White - Aluminium Insert	Type 8	8.000	Set Screw
		<i>0.955</i>		<i>0.374</i>				
# SP1-064-028B-012-060-AWIN	12	24.25	15.00	9.50	Acetal - White - Aluminium Insert	Type 8	6.000	Set Screw
		<i>0.955</i>		<i>0.374</i>				

Indicates item not stocked at time of printing - Please enquire for lead time

Page 4 of 12

E&OE Pricing and all details subject to change without notice - Copyright Miniature Bearings Australia Pty Ltd

MBA Size Listings are a guide to sizes only and must not be solely relied on for critical design information.

Sprockets - 6.35 x 2.8mm - Simplex - Plastic

Part Number	Teeth No.	PCD mm <i>inches</i>	Hub Diameter (D1)	Overall Width (L) mm <i>inches</i>	Material mm <i>inches</i>	Type / Rows	Bore (d)	Locking Method
SP1-064-028B-012-064-AW	12	24.25 <i>0.955</i>	15.47	9.53 <i>0.375</i>	Acetal - White	Type 3	6.350	No Locking
# SP1-064-028B-012-064-NF	12	24.25 <i>0.955</i>	20.65	13.89 <i>0.547</i>	Nylon With Fiberglass	Type 4	6.363	Set Screw
# SP1-064-028B-013-064-NF	13	26.27 <i>1.034</i>	20.65	13.89 <i>0.547</i>	Nylon With Fiberglass	Type 4	6.363	Set Screw
SP1-064-028B-014-064-NF	14	28.29 <i>1.114</i>	20.65	10.72 <i>0.422</i>	Nylon With Fiberglass	Type 5	6.363	Set Screw
# SP1-064-028B-015-080-AWIN	15	30.31 <i>1.193</i>	15.00	9.50 <i>0.374</i>	Acetal - White - Aluminium Insert	Type 8	8.000	Set Screw
SP1-064-028B-015-060-AWIN	15	30.31 <i>1.193</i>	15.00	9.50 <i>0.374</i>	Acetal - White - Aluminium Insert	Type 8	6.000	Set Screw
# SP1-064-028B-015-064-AW	15	30.31 <i>1.193</i>	15.47	9.53 <i>0.375</i>	Acetal - White	Type 3	6.350	No Locking
# SP1-064-028B-015-064-NF	15	30.31 <i>1.193</i>	20.65	10.72 <i>0.422</i>	Nylon With Fiberglass	Type 5	6.363	Set Screw

Indicates item not stocked at time of printing - Please enquire for lead time

Page 5 of 12

E&OE Pricing and all details subject to change without notice - Copyright Miniature Bearings Australia Pty Ltd

MBA Size Listings are a guide to sizes only and must not be solely relied on for critical design information.

Sprockets - 6.35 x 2.8mm - Simplex - Plastic

Part Number	Teeth No.	PCD mm	Hub Diameter (D1)	Overall Width (L) mm	Material mm	Type / Rows	Bore (d)	Locking Method
		<i>inches</i>		<i>inches</i>	<i>inches</i>			
SP1-064-028B-016-080-AWIN	16	32.33	15.00	9.50	Acetal - White - Aluminium Insert	Type 8	8.000	Set Screw
		<i>1.273</i>		<i>0.374</i>				
# SP1-064-028B-016-060-AWIN	16	32.33	15.00	9.50	Acetal - White - Aluminium Insert	Type 8	6.000	Set Screw
		<i>1.273</i>		<i>0.374</i>				
# SP1-064-028B-016-064-AW	16	32.33	15.47	9.53	Acetal - White	Type 3	6.350	No Locking
		<i>1.273</i>		<i>0.375</i>				
SP1-064-028B-016-064-NF	16	32.33	25.40	10.72	Nylon With Fiberglass	Type 5	6.363	Set Screw
		<i>1.273</i>		<i>0.422</i>				
# SP1-064-028B-017-060-AWIN	17	34.35	15.00	9.50	Acetal - White - Aluminium Insert	Type 8	6.000	Set Screw
		<i>1.352</i>		<i>0.374</i>				
# SP1-064-028B-017-080-AWIN	17	34.35	15.00	9.50	Acetal - White - Aluminium Insert	Type 8	8.000	Set Screw
		<i>1.352</i>		<i>0.374</i>				
# SP1-064-028B-017-064-AW	17	34.35	15.47	9.53	Acetal - White	Type 3	6.350	No Locking
		<i>1.352</i>		<i>0.375</i>				
# SP1-064-028B-017-064-NF	17	34.35	25.40	10.72	Nylon With Fiberglass	Type 5	6.363	Set Screw
		<i>1.352</i>		<i>0.422</i>				

Indicates item not stocked at time of printing - Please enquire for lead time

Page 6 of 12

E&OE Pricing and all details subject to change without notice - Copyright Miniature Bearings Australia Pty Ltd
MBA Size Listings are a guide to sizes only and must not be solely relied on for critical design information.

Sprockets - 6.35 x 2.8mm - Simplex - Plastic

Part Number	Teeth No.	PCD mm <i>inches</i>	Hub Diameter (D1)	Overall Width (L) mm <i>inches</i>	Material mm <i>inches</i>	Type / Rows	Bore (d)	Locking Method
# SP1-064-028B-018-060-AWIN	18	36.37 <i>1.432</i>	15.00	9.50 <i>0.374</i>	Acetal - White - Aluminium Insert	Type 8	6.000	Set Screw
# SP1-064-028B-018-080-AWIN	18	36.37 <i>1.432</i>	15.00	9.50 <i>0.374</i>	Acetal - White - Aluminium Insert	Type 8	8.000	Set Screw
# SP1-064-028B-018-064-AW	18	36.37 <i>1.432</i>	15.47	9.53 <i>0.375</i>	Acetal - White	Type 3	6.350	No Locking
# SP1-064-028B-018-064-NF	18	36.37 <i>1.432</i>	25.40	10.72 <i>0.422</i>	Nylon With Fiberglass	Type 5	6.363	Set Screw
# SP1-064-028B-019-080-AWIN	19	38.39 <i>1.511</i>	15.00	9.50 <i>0.374</i>	Acetal - White - Aluminium Insert	Type 8	8.000	Set Screw
# SP1-064-028B-019-060-AWIN	19	38.39 <i>1.511</i>	15.00	9.50 <i>0.374</i>	Acetal - White - Aluminium Insert	Type 8	6.000	Set Screw
# SP1-064-028B-019-064-AW	19	38.39 <i>1.511</i>	15.47	9.53 <i>0.375</i>	Acetal - White	Type 3	6.350	No Locking
# SP1-064-028B-019-064-NF	19	38.39 <i>1.511</i>	25.40	10.72 <i>0.422</i>	Nylon With Fiberglass	Type 5	6.363	Set Screw

Indicates item not stocked at time of printing - Please enquire for lead time

Page 7 of 12

E&OE Pricing and all details subject to change without notice - Copyright Miniature Bearings Australia Pty Ltd
MBA Size Listings are a guide to sizes only and must not be solely relied on for critical design information.

Sprockets - 6.35 x 2.8mm - Simplex - Plastic

Part Number	Teeth No.	PCD mm <i>inches</i>	Hub Diameter (D1)	Overall Width (L) mm <i>inches</i>	Material mm <i>inches</i>	Type / Rows	Bore (d)	Locking Method
# SP1-064-028B-020-060-AWIN	20	40.41 <i>1.591</i>	15.00	9.50 <i>0.374</i>	Acetal - White - Aluminium Insert	Type 8	6.000	Set Screw
SP1-064-028B-020-080-AWIN	20	40.41 <i>1.591</i>	15.00	9.50 <i>0.374</i>	Acetal - White - Aluminium Insert	Type 8	8.000	Set Screw
SP1-064-028B-020-064-AW	20	40.41 <i>1.591</i>	15.47	9.53 <i>0.375</i>	Acetal - White	Type 3	6.350	No Locking
SP1-064-028B-020-064-NF	20	40.41 <i>1.591</i>	25.40	10.72 <i>0.422</i>	Nylon With Fiberglass	Type 6	6.363	Set Screw
# SP1-064-028B-021-064-NF	21	42.43 <i>1.670</i>	25.40	10.72 <i>0.422</i>	Nylon With Fiberglass	Type 6	6.363	Set Screw
# SP1-064-028B-022-064-NF	22	44.45 <i>1.750</i>	25.40	10.72 <i>0.422</i>	Nylon With Fiberglass	Type 6	6.363	Set Screw
SP1-064-028B-024-080-AWIN	24	48.49 <i>1.909</i>	15.00	9.50 <i>0.374</i>	Acetal - White - Aluminium Insert	Type 8	8.000	Set Screw
SP1-064-028B-024-060-AWIN	24	48.49 <i>1.909</i>	15.00	9.50 <i>0.374</i>	Acetal - White - Aluminium Insert	Type 8	6.000	Set Screw

Indicates item not stocked at time of printing - Please enquire for lead time

Page 8 of 12

E&OE Pricing and all details subject to change without notice - Copyright Miniature Bearings Australia Pty Ltd
MBA Size Listings are a guide to sizes only and must not be solely relied on for critical design information.

Sprockets - 6.35 x 2.8mm - Simplex - Plastic

Part Number	Teeth No.	PCD mm <i>inches</i>	Hub Diameter (D1)	Overall Width (L) mm <i>inches</i>	Material mm <i>inches</i>	Type / Rows	Bore (d)	Locking Method
# SP1-064-028B-024-079-AW	24	48.49 <i>1.909</i>	15.47	9.53 <i>0.375</i>	Acetal - White	Type 3	7.938	No Locking
SP1-064-028B-024-064-NF	24	48.49 <i>1.909</i>	25.40	10.72 <i>0.422</i>	Nylon With Fiberglass	Type 6	6.363	Set Screw
# SP1-064-028B-025-060-AWIN	25	50.51 <i>1.989</i>	17.00	9.50 <i>0.374</i>	Acetal - White - Aluminium Insert	Type 8	6.000	Set Screw
# SP1-064-028B-025-080-AWIN	25	50.51 <i>1.989</i>	17.00	9.50 <i>0.374</i>	Acetal - White - Aluminium Insert	Type 8	8.000	Set Screw
# SP1-064-028B-025-079-AW	25	50.51 <i>1.989</i>	17.07	9.53 <i>0.375</i>	Acetal - White	Type 3	7.938	No Locking
# SP1-064-028B-026-064-NF	26	52.53 <i>2.068</i>	25.40	10.72 <i>0.422</i>	Nylon With Fiberglass	Type 6	6.363	Set Screw
# SP1-064-028B-028-064-NF	28	56.57 <i>2.227</i>	25.40	10.72 <i>0.422</i>	Nylon With Fiberglass	Type 6	6.363	Set Screw
# SP1-064-028B-030-060-AWIN	30	60.61 <i>2.386</i>	17.00	9.50 <i>0.374</i>	Acetal - White - Aluminium Insert	Type 8	6.000	Set Screw

Indicates item not stocked at time of printing - Please enquire for lead time

Page 9 of 12

E&OE Pricing and all details subject to change without notice - Copyright Miniature Bearings Australia Pty Ltd

MBA Size Listings are a guide to sizes only and must not be solely relied on for critical design information.

Sprockets - 6.35 x 2.8mm - Simplex - Plastic

Part Number	Teeth No.	PCD mm	Hub Diameter (D1)	Overall Width (L) mm	Material mm	Type / Rows	Bore (d)	Locking Method
		<i>inches</i>		<i>inches</i>	<i>inches</i>			
SP1-064-028B-030-080-AWIN	30	60.61	17.00	9.50	Acetal - White - Aluminium Insert	Type 8	8.000	Set Screw
		<i>2.386</i>		<i>0.374</i>				
SP1-064-028B-030-079-AW	30	60.61	17.07	9.53	Acetal - White	Type 3	7.938	No Locking
		<i>2.386</i>		<i>0.375</i>				
# SP1-064-028B-030-064-NF	30	60.61	25.40	10.72	Nylon With Fiberglass	Type 6	6.363	Set Screw
		<i>2.386</i>		<i>0.422</i>				
# SP1-064-028B-032-060-AWIN	32	64.65	17.00	9.50	Acetal - White - Aluminium Insert	Type 8	6.000	Set Screw
		<i>2.545</i>		<i>0.374</i>				
# SP1-064-028B-032-080-AWIN	32	64.65	17.00	9.50	Acetal - White - Aluminium Insert	Type 8	8.000	Set Screw
		<i>2.545</i>		<i>0.374</i>				
SP1-064-028B-032-095-AW	32	64.65	17.07	9.53	Acetal - White	Type 3	9.525	No Locking
		<i>2.545</i>		<i>0.375</i>				
SP1-064-028B-032-064-NF	32	64.65	25.40	15.09	Nylon With Fiberglass	Type 7	6.363	Set Screw
		<i>2.545</i>		<i>0.594</i>				
# SP1-064-028B-036-080-AWIN	36	72.74	17.00	9.50	Acetal - White - Aluminium Insert	Type 8	8.000	Set Screw
		<i>2.864</i>		<i>0.374</i>				

Indicates item not stocked at time of printing - Please enquire for lead time

Page 10 of 12

E&OE Pricing and all details subject to change without notice - Copyright Miniature Bearings Australia Pty Ltd

MBA Size Listings are a guide to sizes only and must not be solely relied on for critical design information.

Sprockets - 6.35 x 2.8mm - Simplex - Plastic

Part Number	Teeth No.	PCD mm	Hub Diameter (D1)	Overall Width (L) mm	Material mm	Type / Rows	Bore (d)	Locking Method
		<i>inches</i>		<i>inches</i>	<i>inches</i>			
# SP1-064-028B-036-060-AWIN	36	72.74 <i>2.864</i>	17.00	9.50 <i>0.374</i>	Acetal - White - Aluminium Insert	Type 8	6.000	Set Screw
# SP1-064-028B-036-095-AW	36	72.74 <i>2.864</i>	17.07	9.53 <i>0.375</i>	Acetal - White	Type 3	9.525	No Locking
# SP1-064-028B-036-064-NF	36	72.74 <i>2.864</i>	25.40	15.09 <i>0.594</i>	Nylon With Fiberglass	Type 7	6.363	Set Screw
# SP1-064-028B-040-060-AWIN	40	80.82 <i>3.182</i>	17.00	9.50 <i>0.374</i>	Acetal - White - Aluminium Insert	Type 8	6.000	Set Screw
# SP1-064-028B-040-080-AWIN	40	80.82 <i>3.182</i>	17.00	9.50 <i>0.374</i>	Acetal - White - Aluminium Insert	Type 8	8.000	Set Screw
# SP1-064-028B-040-095-AW	40	80.82 <i>3.182</i>	17.07	9.53 <i>0.375</i>	Acetal - White	Type 3	9.525	No Locking
SP1-064-028B-040-064-NF	40	80.82 <i>3.182</i>	25.40	15.09 <i>0.594</i>	Nylon With Fiberglass	Type 7	6.363	Set Screw
# SP1-064-028B-045-064-NF	45	90.92 <i>3.580</i>	25.40	15.09 <i>0.594</i>	Nylon With Fiberglass	Type 7	6.363	Set Screw

Indicates item not stocked at time of printing - Please enquire for lead time

Page 11 of 12

E&OE Pricing and all details subject to change without notice - Copyright Miniature Bearings Australia Pty Ltd

MBA Size Listings are a guide to sizes only and must not be solely relied on for critical design information.

Sprockets - 6.35 x 2.8mm - Simplex - Plastic

Part Number	Teeth No.	PCD mm	Hub Diameter (D1)	Overall Width (L) mm	Material mm	Type / Rows	Bore (d)	Locking Method
		<i>inches</i>		<i>inches</i>	<i>inches</i>			
# SP1-064-028B-048-064-NF	48	96.98	25.40	15.09	Nylon With Fiberglass	Type 7	6.363	Set Screw
		<i>3.818</i>		<i>0.594</i>				

Indicates item not stocked at time of printing - Please enquire for lead time

E&OE Pricing and all details subject to change without notice - Copyright Miniature Bearings Australia Pty Ltd

MBA Size Listings are a guide to sizes only and must not be solely relied on for critical design information.

DISTRIBUTED BY

Distributed By:

