



# **Sprockets - 9.53 x 4.7mm - Simplex - Carbon Steel - Plain Bore**

10/4/2018

# Indicates item not stocked at time of printing - Please enquire for lead time

E&OE Pricing and all details subject to change without notice - Copyright Miniature Bearings Australia Pty Ltd

MBA Size Listings are a guide to sizes only and must not be solely relied on for critical design information.

Page 1 of 9

## INFORMATION

Match with 9.53x4.7mm steel chain (35-1 ASA)

Finish bored and keyed sprockets with black oxide finish. Hub diameters vary to suit bore.

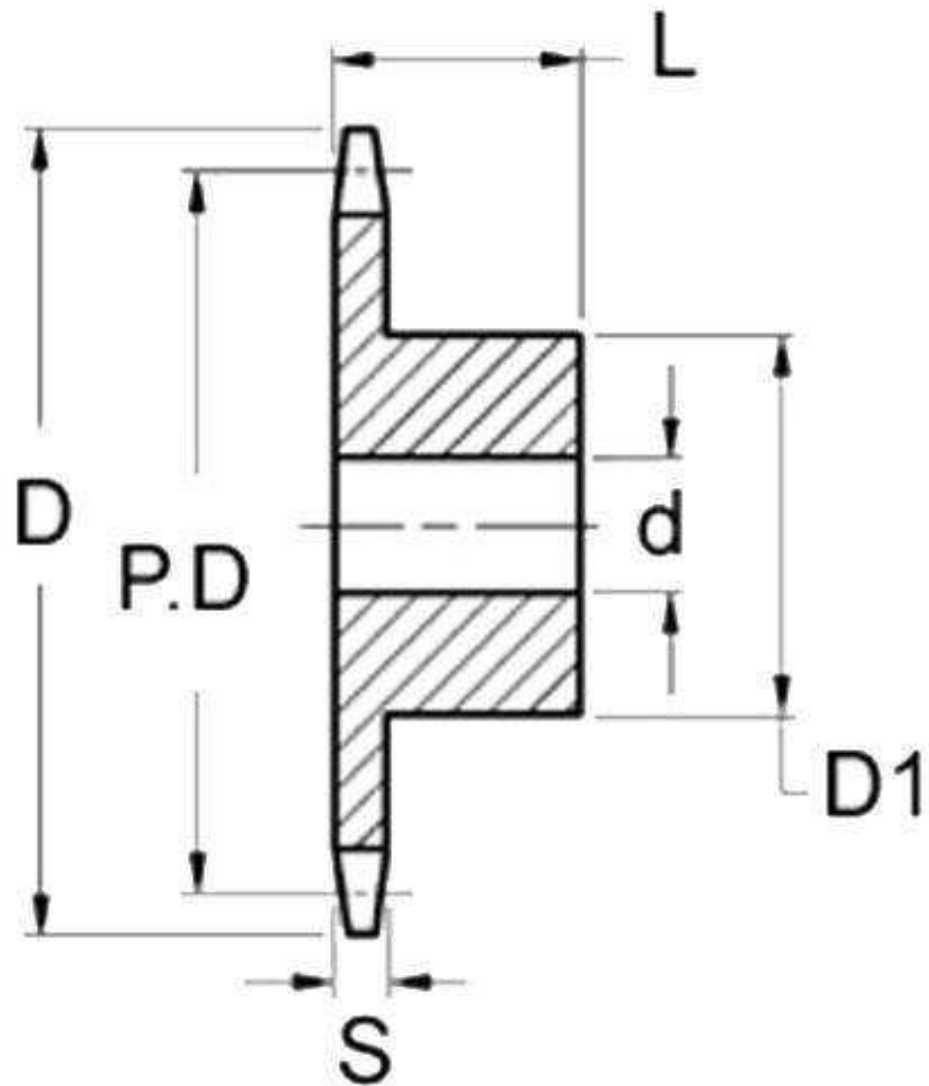
American Standard 35-1 - 3/8 inch

This catalogue to be read in conjunction with information at  
<http://www.minibearings.com.au/item/ch1095047r030535aac/chainrollerplasticsimplex/>  
<http://www.minibearings.com.au/item/ch1095047r304835a/chainrollermetalsimplex/>

# Indicates item not stocked at time of printing - Please enquire for lead time

E&OE Pricing and all details subject to change without notice - Copyright Miniature Bearings Australia Pty Ltd

MBA Size Listings are a guide to sizes only and must not be solely relied on for critical design information.



# Indicates item not stocked at time of printing - Please enquire for lead time

E&OE Pricing and all details subject to change without notice - Copyright Miniature Bearings Australia Pty Ltd

MBA Size Listings are a guide to sizes only and must not be solely relied on for critical design information.

## Sprockets - 9.53 x 4.7mm - Simplex - Carbon Steel - Plain Bore

Part Number	Teeth No.	PCD mm <i>inches</i>	Hub Diameter (D1) mm <i>inches</i>	Overall Width (L) mm <i>inches</i>	Material mm <i>inches</i>	Type / Rows	Bore (d) mm <i>inches</i>	Locking Method
# SP1-095-047B-008-095-C	8	24.24 <i>0.954</i>	19.05 <i>0.750</i>	19.05 <i>0.750</i>	Carbon Steel	Single Row	9.525 <i>0.375</i>	No Locking
# SP1-095-047B-009-095-C	9	27.27 <i>1.074</i>	19.05 <i>0.750</i>	21.44 <i>0.844</i>	Carbon Steel	Single Row	9.525 <i>0.375</i>	No Locking
SP1-095-047B-009-080-C	9	27.3 <i>1.075</i>	19.05 <i>0.750</i>	21.44 <i>0.844</i>	Carbon Steel	Type 3	8.0 <i>0.315</i>	Pilot Bore
SP1-095-047B-010-080-C	10	30.3 <i>1.193</i>	19.05 <i>0.750</i>	24.61 <i>0.969</i>	Carbon Steel	Type 3	8.0 <i>0.315</i>	Pilot Bore
# SP1-095-047B-010-095-C	10	30.31 <i>1.193</i>	19.05 <i>0.750</i>	24.61 <i>0.969</i>	Carbon Steel	Single Row	9.525 <i>0.375</i>	No Locking
SP1-095-047B-011-080-C	11	33.3 <i>1.311</i>	19.05 <i>0.750</i>	26.97 <i>1.062</i>	Carbon Steel	Type 3	8.0 <i>0.315</i>	Pilot Bore
# SP1-095-047B-011-095-C	11	33.34 <i>1.313</i>	19.05 <i>0.750</i>	26.97 <i>1.062</i>	Carbon Steel	Single Row	9.525 <i>0.375</i>	No Locking
# SP1-095-047B-012-127-C	12	36.37 <i>1.432</i>	19.05 <i>0.750</i>	30.96 <i>1.219</i>	Carbon Steel	Single Row	12.7 <i>0.500</i>	No Locking
SP1-095-047B-012-080-C	12	36.4 <i>1.433</i>	19.05 <i>0.750</i>	30.96 <i>1.219</i>	Carbon Steel	Type 3	8.0 <i>0.315</i>	Pilot Bore
SP1-095-047B-013-080-C	13	39.4 <i>1.551</i>	19.05 <i>0.750</i>	31.75 <i>1.250</i>	Carbon Steel	Type 3	8.0 <i>0.315</i>	Pilot Bore

# Indicates item not stocked at time of printing - Please enquire for lead time

E&OE Pricing and all details subject to change without notice - Copyright Miniature Bearings Australia Pty Ltd

MBA Size Listings are a guide to sizes only and must not be solely relied on for critical design information.

## Sprockets - 9.53 x 4.7mm - Simplex - Carbon Steel - Plain Bore

Part Number	Teeth No.	PCD mm <i>inches</i>	Hub Diameter (D1) mm <i>inches</i>	Overall Width (L) mm <i>inches</i>	Material mm <i>inches</i>	Type / Rows	Bore (d) mm <i>inches</i>	Locking Method
# SP1-095-047B-013-127-C	13	39.4 <i>1.551</i>	19.05 <i>0.750</i>	31.75 <i>1.250</i>	Carbon Steel	Single Row	12.7 <i>0.500</i>	No Locking
SP1-095-047B-014-080-C	14	42.4 <i>1.669</i>	19.05 <i>0.750</i>	31.75 <i>1.250</i>	Carbon Steel	Type 3	8.0 <i>0.315</i>	Pilot Bore
# SP1-095-047B-014-127-C	14	42.43 <i>1.670</i>	19.05 <i>0.750</i>	31.75 <i>1.250</i>	Carbon Steel	Single Row	12.7 <i>0.500</i>	No Locking
# SP1-095-047B-015-127-C	15	45.46 <i>1.790</i>	19.05 <i>0.750</i>	34.14 <i>1.344</i>	Carbon Steel	Single Row	12.7 <i>0.500</i>	No Locking
SP1-095-047B-015-100-C	15	45.5 <i>1.791</i>	19.05 <i>0.750</i>	34.14 <i>1.344</i>	Carbon Steel	Type 3	10.0 <i>0.394</i>	Pilot Bore
# SP1-095-047B-016-127-C	16	48.49 <i>1.909</i>	19.05 <i>0.750</i>	37.31 <i>1.469</i>	Carbon Steel	Single Row	12.7 <i>0.500</i>	No Locking
SP1-095-047B-016-090-C	16	48.5 <i>1.909</i>	19.05 <i>0.750</i>	37.31 <i>1.469</i>	Carbon Steel	Type 3	9.0 <i>0.354</i>	Pilot Bore
SP1-095-047B-017-100-C	17	51.5 <i>2.028</i>	19.05 <i>0.750</i>	40.49 <i>1.594</i>	Carbon Steel	Type 3	10.0 <i>0.394</i>	Pilot Bore
# SP1-095-047B-017-127-C	17	51.52 <i>2.028</i>	19.05 <i>0.750</i>	40.49 <i>1.594</i>	Carbon Steel	Single Row	12.7 <i>0.500</i>	No Locking
# SP1-095-047B-018-127-C	18	54.55 <i>2.148</i>	19.05 <i>0.750</i>	-	Carbon Steel	Single Row	12.7 <i>0.500</i>	No Locking

# Indicates item not stocked at time of printing - Please enquire for lead time

Page 5 of 9

E&OE Pricing and all details subject to change without notice - Copyright Miniature Bearings Australia Pty Ltd

MBA Size Listings are a guide to sizes only and must not be solely relied on for critical design information.

## Sprockets - 9.53 x 4.7mm - Simplex - Carbon Steel - Plain Bore

Part Number	Teeth No.	PCD mm <i>inches</i>	Hub Diameter (D1) mm <i>inches</i>	Overall Width (L) mm <i>inches</i>	Material mm <i>inches</i>	Type / Rows	Bore (d) mm <i>inches</i>	Locking Method
SP1-095-047B-018-110-C	18	54.6 <i>2.150</i>	19.05 <i>0.750</i>	-	Carbon Steel	Type 3	11.0 <i>0.433</i>	Pilot Bore
# SP1-095-047B-019-127-C	19	57.58 <i>2.267</i>	19.05 <i>0.750</i>	46.84 <i>1.844</i>	Carbon Steel	Single Row	12.7 <i>0.500</i>	No Locking
SP1-095-047B-019-120-C	19	57.6 <i>2.268</i>	19.05 <i>0.750</i>	46.84 <i>1.844</i>	Carbon Steel	Type 3	12.0 <i>0.472</i>	Pilot Bore
# SP1-095-047B-020-127-C	20	60.6 <i>2.386</i>	19.05 <i>0.750</i>	49.20 <i>1.937</i>	Carbon Steel	Type 3	12.70 <i>0.500</i>	None
SP1-095-047B-020-100-C	20	60.6 <i>2.386</i>	19.05 <i>0.750</i>	49.20 <i>1.937</i>	Carbon Steel	Type 3	10.0 <i>0.394</i>	Pilot Bore
# SP1-095-047B-021-127-C	21	63.64 <i>2.506</i>	22.23 <i>0.875</i>	50.80 <i>2.000</i>	Carbon Steel	Single Row	12.7 <i>0.500</i>	No Locking
# SP1-095-047B-022-127-C	22	66.67 <i>2.625</i>	22.23 <i>0.875</i>	50.80 <i>2.000</i>	Carbon Steel	Single Row	12.7 <i>0.500</i>	No Locking
# SP1-095-047B-023-127-C	23	69.7 <i>2.744</i>	22.23 <i>0.875</i>	50.80 <i>2.000</i>	Carbon Steel	Single Row	12.7 <i>0.500</i>	No Locking
SP1-095-047B-024-254-CK	24	72.7 <i>2.862</i>	22.23 <i>0.875</i>	50.80 <i>2.000</i>	Carbon Steel	Type 3	25.40 <i>1.000</i>	Keyway and Set Screw
# SP1-095-047B-024-127-C	24	72.73 <i>2.863</i>	22.23 <i>0.875</i>	50.80 <i>2.000</i>	Carbon Steel	Single Row	12.7 <i>0.500</i>	No Locking

# Indicates item not stocked at time of printing - Please enquire for lead time

Page 6 of 9

E&OE Pricing and all details subject to change without notice - Copyright Miniature Bearings Australia Pty Ltd

MBA Size Listings are a guide to sizes only and must not be solely relied on for critical design information.

## Sprockets - 9.53 x 4.7mm - Simplex - Carbon Steel - Plain Bore

Part Number	Teeth No.	PCD mm <i>inches</i>	Hub Diameter (D1) mm <i>inches</i>	Overall Width (L) mm <i>inches</i>	Material mm <i>inches</i>	Type / Rows	Bore (d) mm <i>inches</i>	Locking Method
# SP1-095-047B-025-127-C	25	75.76 <i>2.983</i>	22.23 <i>0.875</i>	50.80 <i>2.000</i>	Carbon Steel	Single Row	12.7 <i>0.500</i>	No Locking
SP1-095-047B-025-120-C	25	75.8 <i>2.984</i>	22.23 <i>0.875</i>	50.80 <i>2.000</i>	Carbon Steel	Type 3	12.0 <i>0.472</i>	Pilot Bore
# SP1-095-047B-026-127-C	26	78.79 <i>3.102</i>	22.23 <i>0.875</i>	50.80 <i>2.000</i>	Carbon Steel	Single Row	12.7 <i>0.500</i>	No Locking
# SP1-095-047B-027-127-C	27	81.82 <i>3.221</i>	22.23 <i>0.875</i>	50.80 <i>2.000</i>	Carbon Steel	Single Row	12.7 <i>0.500</i>	No Locking
# SP1-095-047B-028-127-C	28	84.86 <i>3.341</i>	22.23 <i>0.875</i>	50.80 <i>2.000</i>	Carbon Steel	Single Row	12.7 <i>0.500</i>	No Locking
# SP1-095-047B-030-127-C	30	90.92 <i>3.580</i>	22.23 <i>0.875</i>	50.80 <i>2.000</i>	Carbon Steel	Single Row	12.7 <i>0.500</i>	No Locking
# SP1-095-047B-032-127-C	32	96.98 <i>3.818</i>	22.23 <i>0.875</i>	50.80 <i>2.000</i>	Carbon Steel	Single Row	12.7 <i>0.500</i>	No Locking
# SP1-095-047B-035-159-C	35	106.07 <i>4.176</i>	22.23 <i>0.875</i>	57.15 <i>2.250</i>	Carbon Steel	Single Row	15.875 <i>0.625</i>	No Locking
# SP1-095-047B-036-159-C	36	109.1 <i>4.295</i>	22.23 <i>0.875</i>	57.15 <i>2.250</i>	Carbon Steel	Single Row	15.875 <i>0.625</i>	No Locking
# SP1-095-047B-040-159-C	40	121.22 <i>4.772</i>	22.23 <i>0.875</i>	57.15 <i>2.250</i>	Carbon Steel	Single Row	15.875 <i>0.625</i>	No Locking

# Indicates item not stocked at time of printing - Please enquire for lead time

Page 7 of 9

E&OE Pricing and all details subject to change without notice - Copyright Miniature Bearings Australia Pty Ltd

MBA Size Listings are a guide to sizes only and must not be solely relied on for critical design information.

## Sprockets - 9.53 x 4.7mm - Simplex - Carbon Steel - Plain Bore

Part Number	Teeth No.	PCD mm <i>inches</i>	Hub Diameter (D1) mm <i>inches</i>	Overall Width (L) mm <i>inches</i>	Material mm <i>inches</i>	Type / Rows	Bore (d) mm <i>inches</i>	Locking Method
# SP1-095-047B-042-159-C	42	127.28 <i>5.011</i>	22.23 <i>0.875</i>	57.15 <i>2.250</i>	Carbon Steel	Single Row	15.875 <i>0.625</i>	No Locking
# SP1-095-047B-045-159-C	45	136.37 <i>5.369</i>	22.23 <i>0.875</i>	57.15 <i>2.250</i>	Carbon Steel	Single Row	15.875 <i>0.625</i>	No Locking
# SP1-095-047B-048-159-C	48	145.47 <i>5.727</i>	22.23 <i>0.875</i>	57.15 <i>2.250</i>	Carbon Steel	Single Row	15.875 <i>0.625</i>	No Locking
# SP1-095-047B-054-159-C	54	163.65 <i>6.443</i>	22.23 <i>0.875</i>	57.15 <i>2.250</i>	Carbon Steel	Single Row	15.875 <i>0.625</i>	No Locking
# SP1-095-047B-060-191-C	60	181.83 <i>7.159</i>	22.23 <i>0.875</i>	57.15 <i>2.250</i>	Carbon Steel	Single Row	19.05 <i>0.750</i>	No Locking
# SP1-095-047B-070-191-C	70	212.14 <i>8.352</i>	22.23 <i>0.875</i>	57.15 <i>2.250</i>	Carbon Steel	Single Row	19.05 <i>0.750</i>	No Locking
# SP1-095-047B-072-191-C	72	218.2 <i>8.591</i>	22.23 <i>0.875</i>	57.15 <i>2.250</i>	Carbon Steel	Single Row	19.05 <i>0.750</i>	No Locking
# SP1-095-047B-080-191-C	80	242.44 <i>9.545</i>	-	-	Carbon Steel	Single Row	19.05 <i>0.750</i>	No Locking
# SP1-095-047B-084-191-C	84	254.57 <i>10.022</i>	-	-	Carbon Steel	Single Row	19.05 <i>0.750</i>	No Locking
# SP1-095-047B-096-191-C	96	290.93 <i>11.454</i>	-	-	Carbon Steel	Single Row	19.05 <i>0.750</i>	No Locking

# Indicates item not stocked at time of printing - Please enquire for lead time

E&OE Pricing and all details subject to change without notice - Copyright Miniature Bearings Australia Pty Ltd

MBA Size Listings are a guide to sizes only and must not be solely relied on for critical design information.



## Sprockets - 9.53 x 4.7mm - Simplex - Carbon Steel - Plain Bore

Part Number	Teeth No.	PCD mm	Hub Diameter (D1) mm	Overall Width (L) mm	Material mm	Type / Rows	Bore (d) mm	Locking Method
		<i>inches</i>	<i>inches</i>	<i>inches</i>	<i>inches</i>		<i>inches</i>	
# SP1-095-047B-112-191-C	112	339.42 13.363	-	-	Carbon Steel	Single Row	19.05 0.750	No Locking

# Indicates item not stocked at time of printing - Please enquire for lead time

Page 9 of 9

E&OE Pricing and all details subject to change without notice - Copyright Miniature Bearings Australia Pty Ltd  
MBA Size Listings are a guide to sizes only and must not be solely relied on for critical design information.

DISTRIBUTED BY

Distributed By:

