



# **Sprockets - 12.7 x 7.85mm - Simplex - Carbon Steel - Plain Bore**

10/4/2018

# Indicates item not stocked at time of printing - Please enquire for lead time

E&OE Pricing and all details subject to change without notice - Copyright Miniature Bearings Australia Pty Ltd

MBA Size Listings are a guide to sizes only and must not be solely relied on for critical design information.

Page 1 of 9

## INFORMATION

Match with 12.70x7.85mm simplex chain (40-1 ASA)

Pilot bored sprockets come with a very small bore that will need to be machined by the customer to suit their shaft size.

American Standard 40-1 - 1/2 inch. With and without hubs.

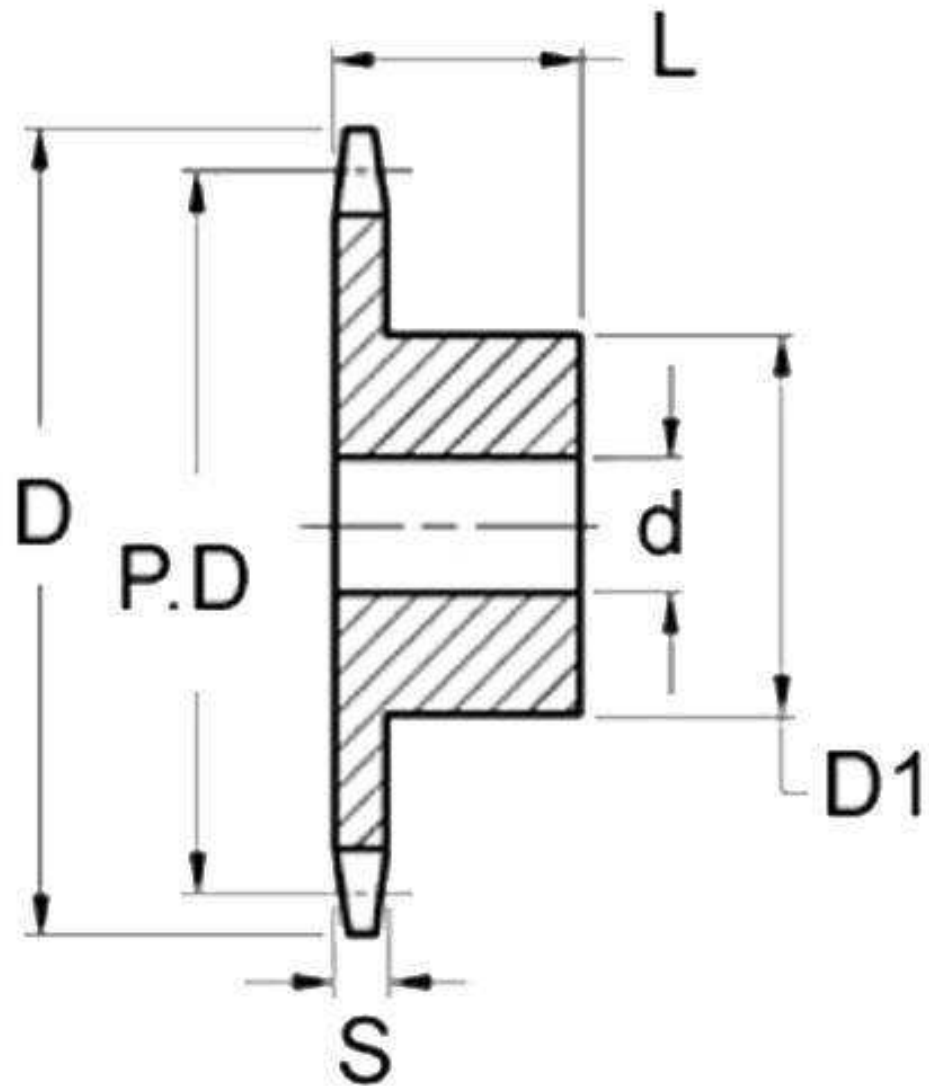
For easy ready selected sets of chain and sprockets please see the <a href="http://www.hobbyparts.com.au/store/categories/easy+kits/">HES website</a>

<http://www.minibearings.com.au//item/ch1127079r304840a/chainrollermetalsimplex/>

# Indicates item not stocked at time of printing - Please enquire for lead time

E&OE Pricing and all details subject to change without notice - Copyright Miniature Bearings Australia Pty Ltd

MBA Size Listings are a guide to sizes only and must not be solely relied on for critical design information.



# Indicates item not stocked at time of printing - Please enquire for lead time

E&OE Pricing and all details subject to change without notice - Copyright Miniature Bearings Australia Pty Ltd

MBA Size Listings are a guide to sizes only and must not be solely relied on for critical design information.

## Sprockets - 12.7 x 7.85mm - Simplex - Carbon Steel - Plain Bore

Part Number	Teeth No.	PCD mm <i>inches</i>	Hub Diameter mm <i>inches</i>	Overall Width mm <i>inches</i>	Material mm <i>inches</i>	Type / Rows	Bore (d)	Locking Method
# SP1-127-079B-008-127-C	8	32.33 <i>1.273</i>	-	22.23 <i>0.875</i>	Carbon Steel	Single Row	12.7	No Locking
# SP1-127-079B-009-127-C	9	36.37 <i>1.432</i>	26.97 <i>1.062</i>	22.23 <i>0.875</i>	Carbon Steel	Single Row	12.7	No Locking
# SP1-127-079B-010-127-C	10	40.41 <i>1.591</i>	-	22.23 <i>0.875</i>	Carbon Steel	Single Row	12.7	No Locking
# SP1-127-079B-011-127-C	11	44.45 <i>1.750</i>	34.93 <i>1.375</i>	22.23 <i>0.875</i>	Carbon Steel	Single Row	12.7	No Locking
# SP1-127-079B-012-127-C	12	48.49 <i>1.909</i>	39.67 <i>1.562</i>	22.23 <i>0.875</i>	Carbon Steel	Single Row	12.7	No Locking
# SP1-127-079B-013-127-C	13	52.53 <i>2.068</i>	39.67 <i>1.562</i>	22.23 <i>0.875</i>	Carbon Steel	Single Row	12.7	No Locking
# SP1-127-079B-014-127-C	14	56.57 <i>2.227</i>	42.88 <i>1.688</i>	22.23 <i>0.875</i>	Carbon Steel	Single Row	12.7	No Locking
# SP1-127-079B-015-127-C	15	60.61 <i>2.386</i>	46.02 <i>1.812</i>	22.23 <i>0.875</i>	Carbon Steel	Single Row	12.7	No Locking
# SP1-127-079B-016-159-C	16	64.65 <i>2.545</i>	50.80 <i>2.000</i>	22.23 <i>0.875</i>	Carbon Steel	Single Row	15.875	No Locking
# SP1-127-079B-017-159-C	17	68.69 <i>2.704</i>	53.98 <i>2.125</i>	25.40 <i>1.000</i>	Carbon Steel	Single Row	15.875	No Locking

# Indicates item not stocked at time of printing - Please enquire for lead time

Page 4 of 9

E&OE Pricing and all details subject to change without notice - Copyright Miniature Bearings Australia Pty Ltd

MBA Size Listings are a guide to sizes only and must not be solely relied on for critical design information.

## Sprockets - 12.7 x 7.85mm - Simplex - Carbon Steel - Plain Bore

Part Number	Teeth No.	PCD mm <i>inches</i>	Hub Diameter mm <i>inches</i>	Overall Width mm <i>inches</i>	Material mm <i>inches</i>	Type / Rows	Bore (d)	Locking Method
# SP1-127-079B-018-159-C	18	72.73 <i>2.863</i>	58.72 <i>2.312</i>	25.40 <i>1.000</i>	Carbon Steel	Single Row	15.875	No Locking
# SP1-127-079B-019-159-C	19	76.77 <i>3.022</i>	63.50 <i>2.500</i>	25.40 <i>1.000</i>	Carbon Steel	Single Row	15.875	No Locking
# SP1-127-079B-020-159-C	20	80.81 <i>3.181</i>	66.68 <i>2.625</i>	25.40 <i>1.000</i>	Carbon Steel	Single Row	15.875	No Locking
# SP1-127-079B-021-159-C	21	84.86 <i>3.341</i>	69.85 <i>2.750</i>	25.40 <i>1.000</i>	Carbon Steel	Single Row	15.875	No Locking
# SP1-127-079B-022-159-C	22	88.9 <i>3.500</i>	73.03 <i>2.875</i>	25.40 <i>1.000</i>	Carbon Steel	Single Row	15.875	No Locking
# SP1-127-079B-023-159-C	23	92.94 <i>3.659</i>	76.20 <i>3.000</i>	25.40 <i>1.000</i>	Carbon Steel	Single Row	15.875	No Locking
# SP1-127-079B-024-159-C	24	96.98 <i>3.818</i>	82.55 <i>3.250</i>	25.40 <i>1.000</i>	Carbon Steel	Single Row	15.875	No Locking
# SP1-127-079B-025-159-C	25	101.02 <i>3.977</i>	82.55 <i>3.250</i>	25.40 <i>1.000</i>	Carbon Steel	Single Row	15.875	No Locking
# SP1-127-079B-026-159-C	26	105.06 <i>4.136</i>	82.55 <i>3.250</i>	25.40 <i>1.000</i>	Carbon Steel	Single Row	15.875	No Locking
# SP1-127-079B-027-159-C	27	109.1 <i>4.295</i>	82.55 <i>3.250</i>	25.40 <i>1.000</i>	Carbon Steel	Single Row	15.875	No Locking

# Indicates item not stocked at time of printing - Please enquire for lead time

Page 5 of 9

E&OE Pricing and all details subject to change without notice - Copyright Miniature Bearings Australia Pty Ltd

MBA Size Listings are a guide to sizes only and must not be solely relied on for critical design information.

## Sprockets - 12.7 x 7.85mm - Simplex - Carbon Steel - Plain Bore

Part Number	Teeth No.	PCD mm <i>inches</i>	Hub Diameter mm <i>inches</i>	Overall Width mm <i>inches</i>	Material mm <i>inches</i>	Type / Rows	Bore (d)	Locking Method
# SP1-127-079B-028-159-C	28	113.14 <i>4.454</i>	82.55 <i>3.250</i>	25.40 <i>1.000</i>	Carbon Steel	Single Row	15.875	No Locking
# SP1-127-079B-029-159-C	29	117.18 <i>4.613</i>	82.55 <i>3.250</i>	25.40 <i>1.000</i>	Carbon Steel	Single Row	15.875	No Locking
# SP1-127-079B-030-159-C	30	121.22 <i>4.772</i>	82.55 <i>3.250</i>	25.40 <i>1.000</i>	Carbon Steel	Single Row	15.875	No Locking
# SP1-127-079B-031-159-C	31	125.26 <i>4.931</i>	82.55 <i>3.250</i>	25.40 <i>1.000</i>	Carbon Steel	Single Row	15.875	No Locking
# SP1-127-079B-032-159-C	32	129.3 <i>5.091</i>	82.55 <i>3.250</i>	25.40 <i>1.000</i>	Carbon Steel	Single Row	15.875	No Locking
# SP1-127-079B-033-159-C	33	133.34 <i>5.250</i>	82.55 <i>3.250</i>	25.40 <i>1.000</i>	Carbon Steel	Single Row	15.875	No Locking
# SP1-127-079B-034-159-C	34	137.38 <i>5.409</i>	82.55 <i>3.250</i>	25.40 <i>1.000</i>	Carbon Steel	Single Row	15.875	No Locking
# SP1-127-079B-035-159-C	35	141.43 <i>5.568</i>	82.55 <i>3.250</i>	25.40 <i>1.000</i>	Carbon Steel	Single Row	15.875	No Locking
# SP1-127-079B-036-159-C	36	145.47 <i>5.727</i>	82.55 <i>3.250</i>	25.40 <i>1.000</i>	Carbon Steel	Single Row	15.875	No Locking
# SP1-127-079B-037-159-C	37	149.51 <i>5.886</i>	82.55 <i>3.250</i>	25.40 <i>1.000</i>	Carbon Steel	Single Row	15.875	No Locking

# Indicates item not stocked at time of printing - Please enquire for lead time

Page 6 of 9

E&OE Pricing and all details subject to change without notice - Copyright Miniature Bearings Australia Pty Ltd

MBA Size Listings are a guide to sizes only and must not be solely relied on for critical design information.

## Sprockets - 12.7 x 7.85mm - Simplex - Carbon Steel - Plain Bore

Part Number	Teeth No.	PCD mm <i>inches</i>	Hub Diameter mm <i>inches</i>	Overall Width mm <i>inches</i>	Material mm <i>inches</i>	Type / Rows	Bore (d)	Locking Method
# SP1-127-079B-038-159-C	38	153.55 <i>6.045</i>	82.55 <i>3.250</i>	25.40 <i>1.000</i>	Carbon Steel	Single Row	15.875	No Locking
# SP1-127-079B-039-159-C	39	157.59 <i>6.204</i>	82.55 <i>3.250</i>	25.40 <i>1.000</i>	Carbon Steel	Single Row	15.875	No Locking
# SP1-127-079B-040-191-C	40	161.63 <i>6.363</i>	88.90 <i>3.500</i>	28.58 <i>1.125</i>	Carbon Steel	Single Row	19.05	No Locking
# SP1-127-079B-041-191-C	41	165.67 <i>6.522</i>	88.90 <i>3.500</i>	28.58 <i>1.125</i>	Carbon Steel	Single Row	19.05	No Locking
# SP1-127-079B-042-191-C	42	169.71 <i>6.681</i>	88.90 <i>3.500</i>	28.58 <i>1.125</i>	Carbon Steel	Single Row	19.05	No Locking
# SP1-127-079B-043-191-C	43	173.75 <i>6.841</i>	88.90 <i>3.500</i>	28.58 <i>1.125</i>	Carbon Steel	Single Row	19.05	No Locking
# SP1-127-079B-044-191-C	44	177.79 <i>7.000</i>	88.90 <i>3.500</i>	28.58 <i>1.125</i>	Carbon Steel	Single Row	19.05	No Locking
# SP1-127-079B-045-191-C	45	181.83 <i>7.159</i>	88.90 <i>3.500</i>	28.58 <i>1.125</i>	Carbon Steel	Single Row	19.05	No Locking
# SP1-127-079B-046-191-C	46	185.87 <i>7.318</i>	88.90 <i>3.500</i>	28.58 <i>1.125</i>	Carbon Steel	Single Row	19.05	No Locking
# SP1-127-079B-047-191-C	47	189.91 <i>7.477</i>	88.90 <i>3.500</i>	28.58 <i>1.125</i>	Carbon Steel	Single Row	19.05	No Locking

# Indicates item not stocked at time of printing - Please enquire for lead time

Page 7 of 9

E&OE Pricing and all details subject to change without notice - Copyright Miniature Bearings Australia Pty Ltd

MBA Size Listings are a guide to sizes only and must not be solely relied on for critical design information.

## Sprockets - 12.7 x 7.85mm - Simplex - Carbon Steel - Plain Bore

Part Number	Teeth No.	PCD mm <i>inches</i>	Hub Diameter mm <i>inches</i>	Overall Width mm <i>inches</i>	Material mm <i>inches</i>	Type / Rows	Bore (d)	Locking Method
SP1-127-079B-048-191-C	48	193.95 <i>7.636</i>	88.90 <i>3.500</i>	28.58 <i>1.125</i>	Carbon Steel	Single Row	19.05	No Locking
# SP1-127-079B-049-191-C	49	198 <i>7.795</i>	88.90 <i>3.500</i>	28.58 <i>1.125</i>	Carbon Steel	Single Row	19.05	No Locking
# SP1-127-079B-050-191-C	50	202.04 <i>7.954</i>	88.90 <i>3.500</i>	28.58 <i>1.125</i>	Carbon Steel	Single Row	19.05	No Locking
# SP1-127-079B-051-191-C	51	206.08 <i>8.113</i>	88.90 <i>3.500</i>	28.58 <i>1.125</i>	Carbon Steel	Single Row	19.05	No Locking
# SP1-127-079B-052-191-C	52	210.12 <i>8.272</i>	88.90 <i>3.500</i>	28.58 <i>1.125</i>	Carbon Steel	Single Row	19.05	No Locking
# SP1-127-079B-053-191-C	53	214.16 <i>8.431</i>	88.90 <i>3.500</i>	28.58 <i>1.125</i>	Carbon Steel	Single Row	19.05	No Locking
# SP1-127-079B-054-191-C	54	218.2 <i>8.591</i>	88.90 <i>3.500</i>	28.58 <i>1.125</i>	Carbon Steel	Single Row	19.05	No Locking
# SP1-127-079B-055-191-C	55	222.24 <i>8.750</i>	88.90 <i>3.500</i>	28.58 <i>1.125</i>	Carbon Steel	Single Row	19.05	No Locking
# SP1-127-079B-056-191-C	56	226.28 <i>8.909</i>	88.90 <i>3.500</i>	28.58 <i>1.125</i>	Carbon Steel	Single Row	19.05	No Locking
# SP1-127-079B-057-191-C	57	230.32 <i>9.068</i>	88.90 <i>3.500</i>	28.58 <i>1.125</i>	Carbon Steel	Single Row	19.05	No Locking

# Indicates item not stocked at time of printing - Please enquire for lead time

Page 8 of 9

E&OE Pricing and all details subject to change without notice - Copyright Miniature Bearings Australia Pty Ltd

MBA Size Listings are a guide to sizes only and must not be solely relied on for critical design information.



## Sprockets - 12.7 x 7.85mm - Simplex - Carbon Steel - Plain Bore

Part Number	Teeth No.	PCD mm <i>inches</i>	Hub Diameter mm <i>inches</i>	Overall Width mm <i>inches</i>	Material mm <i>inches</i>	Type / Rows	Bore (d)	Locking Method
# SP1-127-079B-058-191-C	58	234.36 <i>9.227</i>	88.90 <i>3.500</i>	28.58 <i>1.125</i>	Carbon Steel	Single Row	19.05	No Locking
# SP1-127-079B-059-191-C	59	238.4 <i>9.386</i>	88.90 <i>3.500</i>	28.58 <i>1.125</i>	Carbon Steel	Single Row	19.05	No Locking
# SP1-127-079B-060-191-C	60	242.44 <i>9.545</i>	88.90 <i>3.500</i>	28.58 <i>1.125</i>	Carbon Steel	Single Row	19.05	No Locking
# SP1-127-079B-070-191-C	70	282.85 <i>11.136</i>	101.60 <i>4.000</i>	31.75 <i>1.250</i>	Carbon Steel	Single Row	19.05	No Locking
# SP1-127-079B-072-191-C	72	290.93 <i>11.454</i>	101.60 <i>4.000</i>	31.75 <i>1.250</i>	Carbon Steel	Single Row	19.05	No Locking
# SP1-127-079B-080-191-C	80	323.26 <i>12.727</i>	101.60 <i>4.000</i>	31.75 <i>1.250</i>	Carbon Steel	Single Row	19.05	No Locking
# SP1-127-079B-084-191-C	84	339.42 <i>13.363</i>	101.60 <i>4.000</i>	31.75 <i>1.250</i>	Carbon Steel	Single Row	19.05	No Locking
# SP1-127-079B-096-191-C	96	387.91 <i>15.272</i>	101.60 <i>4.000</i>	31.75 <i>1.250</i>	Carbon Steel	Single Row	19.05	No Locking
# SP1-127-079B-112-254-C	112	452.56 <i>17.817</i>	101.60 <i>4.000</i>	31.75 <i>1.250</i>	Carbon Steel	Single Row	25.4	No Locking

# Indicates item not stocked at time of printing - Please enquire for lead time

Page 9 of 9

E&OE Pricing and all details subject to change without notice - Copyright Miniature Bearings Australia Pty Ltd

MBA Size Listings are a guide to sizes only and must not be solely relied on for critical design information.

DISTRIBUTED BY

Distributed By:

