



# **Sprockets - 15.88 x 9.4mm - Simplex - Carbon Steel - Plain Bore**

10/4/2018

# Indicates item not stocked at time of printing - Please enquire for lead time

E&OE Pricing and all details subject to change without notice - Copyright Miniature Bearings Australia Pty Ltd

MBA Size Listings are a guide to sizes only and must not be solely relied on for critical design information.

Page 1 of 10

## INFORMATION

Match with 15.90x9.4mm steel chain (50-1 ASA)

Pilot bored sprockets come with a very small bore that will need to be machined by the customer to suit their shaft size.

American Standard 50-1 - 5/8 inch

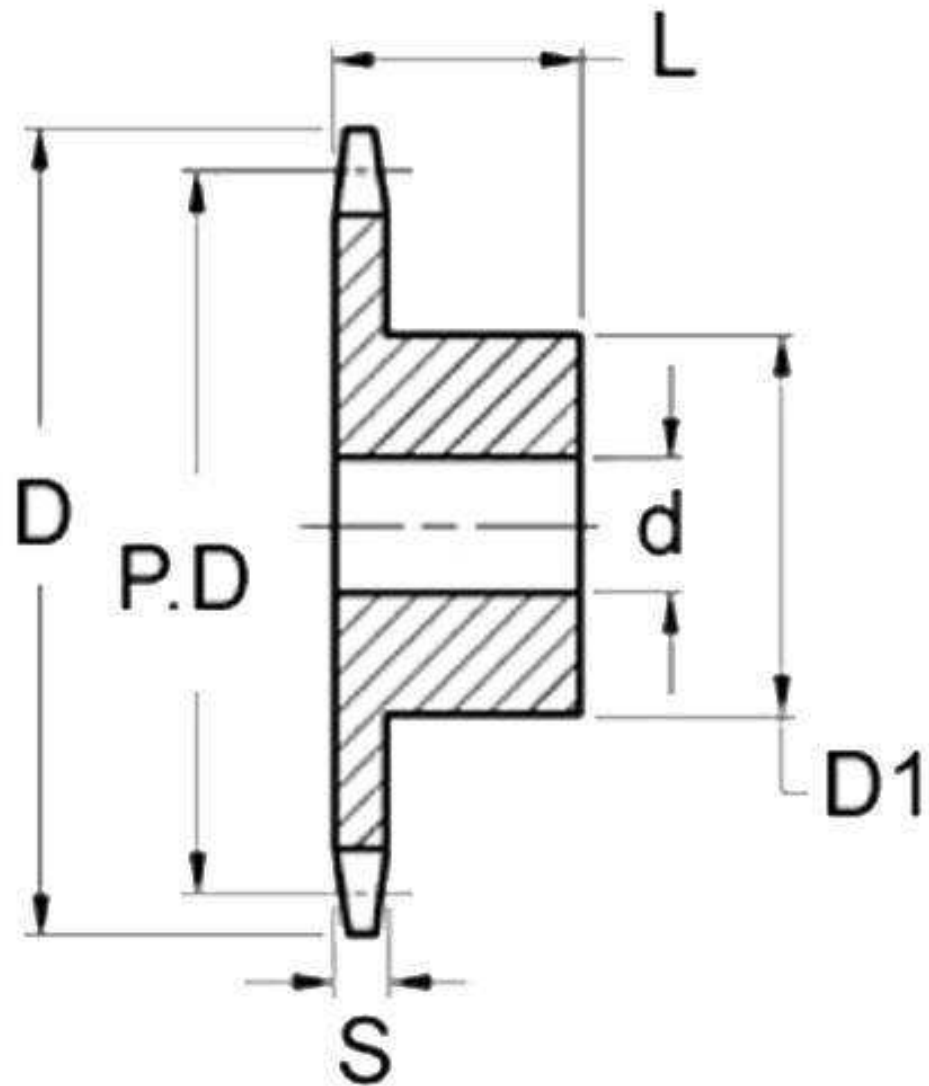
For easy ready selected sets of chain and sprockets please see the <a href="http://www.hobbyparts.com.au/store/categories/easy+kits/">HES website</a>

This catalogue to be read in conjunction with information at <http://www.minibearings.com.au//item/ch1159095r304850a/chainrollermetalsimplex/>  
<http://www.minibearings.com.au//item/ch1159095r304850ass/chainrollermetalsimplexstainlesssteel/>

# Indicates item not stocked at time of printing - Please enquire for lead time

E&OE Pricing and all details subject to change without notice - Copyright Miniature Bearings Australia Pty Ltd

MBA Size Listings are a guide to sizes only and must not be solely relied on for critical design information.



# Indicates item not stocked at time of printing - Please enquire for lead time

E&OE Pricing and all details subject to change without notice - Copyright Miniature Bearings Australia Pty Ltd

MBA Size Listings are a guide to sizes only and must not be solely relied on for critical design information.

## Sprockets - 15.88 x 9.4mm - Simplex - Carbon Steel - Plain Bore

Part Number	Teeth No.	PCD mm <i>inches</i>	Hub Diameter (D1) mm <i>inches</i>	Overall Width (L) mm <i>inches</i>	Material mm <i>inches</i>	Type / Rows	Bore (d)	Locking Method
# SP1-159-094B-008-159-C	8	40.41 <i>1.591</i>	-	25.40 <i>1.000</i>	Carbon Steel	Single Row	15.875	No Locking
# SP1-159-094B-009-159-C	9	45.46 <i>1.790</i>	-	25.40 <i>1.000</i>	Carbon Steel	Single Row	15.875	No Locking
# SP1-159-094B-010-159-C	10	50.51 <i>1.989</i>	39.67 <i>1.562</i>	25.40 <i>1.000</i>	Carbon Steel	Single Row	15.875	No Locking
# SP1-159-094B-011-159-C	11	55.56 <i>2.187</i>	44.45 <i>1.750</i>	25.40 <i>1.000</i>	Carbon Steel	Single Row	15.875	No Locking
# SP1-159-094B-012-159-C	12	60.61 <i>2.386</i>	50.39 <i>1.984</i>	25.40 <i>1.000</i>	Carbon Steel	Single Row	15.875	No Locking
# SP1-159-094B-013-159-C	13	65.66 <i>2.585</i>	47.63 <i>1.875</i>	25.40 <i>1.000</i>	Carbon Steel	Single Row	15.875	No Locking
# SP1-159-094B-014-159-C	14	70.71 <i>2.784</i>	53.98 <i>2.125</i>	25.40 <i>1.000</i>	Carbon Steel	Single Row	15.875	No Locking
# SP1-159-094B-015-159-C	15	75.76 <i>2.983</i>	60.33 <i>2.375</i>	25.40 <i>1.000</i>	Carbon Steel	Single Row	15.875	No Locking
# SP1-159-094B-016-159-C	16	80.81 <i>3.181</i>	63.50 <i>2.500</i>	25.40 <i>1.000</i>	Carbon Steel	Single Row	15.875	No Locking
# SP1-159-094B-017-159-C	17	85.87 <i>3.381</i>	68.25 <i>2.687</i>	25.40 <i>1.000</i>	Carbon Steel	Single Row	15.875	No Locking

# Indicates item not stocked at time of printing - Please enquire for lead time

Page 4 of 10

E&OE Pricing and all details subject to change without notice - Copyright Miniature Bearings Australia Pty Ltd

MBA Size Listings are a guide to sizes only and must not be solely relied on for critical design information.

## Sprockets - 15.88 x 9.4mm - Simplex - Carbon Steel - Plain Bore

Part Number	Teeth No.	PCD mm <i>inches</i>	Hub Diameter (D1) mm <i>inches</i>	Overall Width (L) mm <i>inches</i>	Material mm <i>inches</i>	Type / Rows	Bore (d)	Locking Method
# SP1-159-094B-018-159-C	18	90.92 <i>3.580</i>	73.03 <i>2.875</i>	25.40 <i>1.000</i>	Carbon Steel	Single Row	15.875	No Locking
# SP1-159-094B-019-159-C	19	95.97 <i>3.778</i>	76.20 <i>3.000</i>	25.40 <i>1.000</i>	Carbon Steel	Single Row	15.875	No Locking
# SP1-159-094B-020-191-C	20	101.02 <i>3.977</i>	76.20 <i>3.000</i>	25.40 <i>1.000</i>	Carbon Steel	Single Row	19.05	No Locking
# SP1-159-094B-021-191-C	21	106.07 <i>4.176</i>	76.20 <i>3.000</i>	25.40 <i>1.000</i>	Carbon Steel	Single Row	19.05	No Locking
# SP1-159-094B-022-191-C	22	111.12 <i>4.375</i>	76.20 <i>3.000</i>	25.40 <i>1.000</i>	Carbon Steel	Single Row	19.05	No Locking
# SP1-159-094B-023-191-C	23	116.17 <i>4.574</i>	76.20 <i>3.000</i>	25.40 <i>1.000</i>	Carbon Steel	Single Row	19.05	No Locking
# SP1-159-094B-024-191-C	24	121.22 <i>4.772</i>	76.20 <i>3.000</i>	31.75 <i>1.250</i>	Carbon Steel	Single Row	19.05	No Locking
# SP1-159-094B-025-191-C	25	126.27 <i>4.971</i>	76.20 <i>3.000</i>	31.75 <i>1.250</i>	Carbon Steel	Single Row	19.05	No Locking
# SP1-159-094B-026-191-C	26	131.32 <i>5.170</i>	76.20 <i>3.000</i>	31.75 <i>1.250</i>	Carbon Steel	Single Row	19.05	No Locking
# SP1-159-094B-027-191-C	27	136.37 <i>5.369</i>	76.20 <i>3.000</i>	31.75 <i>1.250</i>	Carbon Steel	Single Row	19.05	No Locking

# Indicates item not stocked at time of printing - Please enquire for lead time

Page 5 of 10

E&OE Pricing and all details subject to change without notice - Copyright Miniature Bearings Australia Pty Ltd

MBA Size Listings are a guide to sizes only and must not be solely relied on for critical design information.

## Sprockets - 15.88 x 9.4mm - Simplex - Carbon Steel - Plain Bore

Part Number	Teeth No.	PCD mm <i>inches</i>	Hub Diameter (D1) mm <i>inches</i>	Overall Width (L) mm <i>inches</i>	Material mm <i>inches</i>	Type / Rows	Bore (d)	Locking Method
# SP1-159-094B-028-191-C	28	141.43 <i>5.568</i>	76.20 <i>3.000</i>	31.75 <i>1.250</i>	Carbon Steel	Single Row	19.05	No Locking
# SP1-159-094B-029-191-C	29	146.48 <i>5.767</i>	-	31.75 <i>1.250</i>	Carbon Steel	Single Row	19.05	No Locking
# SP1-159-094B-030-191-C	30	151.53 <i>5.966</i>	82.55 <i>3.250</i>	31.75 <i>1.250</i>	Carbon Steel	Single Row	19.05	No Locking
# SP1-159-094B-031-191-C	31	156.58 <i>6.165</i>	82.55 <i>3.250</i>	31.75 <i>1.250</i>	Carbon Steel	Single Row	19.05	No Locking
# SP1-159-094B-032-191-C	32	161.63 <i>6.363</i>	82.55 <i>3.250</i>	31.75 <i>1.250</i>	Carbon Steel	Single Row	19.05	No Locking
# SP1-159-094B-033-191-C	33	166.68 <i>6.562</i>	82.55 <i>3.250</i>	31.75 <i>1.250</i>	Carbon Steel	Single Row	19.05	No Locking
# SP1-159-094B-034-191-C	34	171.73 <i>6.761</i>	82.55 <i>3.250</i>	31.75 <i>1.250</i>	Carbon Steel	Single Row	19.05	No Locking
# SP1-159-094B-035-191-C	35	176.78 <i>6.960</i>	82.55 <i>3.250</i>	31.75 <i>1.250</i>	Carbon Steel	Single Row	19.05	No Locking
# SP1-159-094B-036-191-C	36	181.83 <i>7.159</i>	82.55 <i>3.250</i>	31.75 <i>1.250</i>	Carbon Steel	Single Row	19.05	No Locking
# SP1-159-094B-037-191-C	37	186.88 <i>7.357</i>	82.55 <i>3.250</i>	31.75 <i>1.250</i>	Carbon Steel	Single Row	19.05	No Locking

# Indicates item not stocked at time of printing - Please enquire for lead time

Page 6 of 10

E&OE Pricing and all details subject to change without notice - Copyright Miniature Bearings Australia Pty Ltd

MBA Size Listings are a guide to sizes only and must not be solely relied on for critical design information.

## Sprockets - 15.88 x 9.4mm - Simplex - Carbon Steel - Plain Bore

Part Number	Teeth No.	PCD mm <i>inches</i>	Hub Diameter (D1) mm <i>inches</i>	Overall Width (L) mm <i>inches</i>	Material mm <i>inches</i>	Type / Rows	Bore (d)	Locking Method
# SP1-159-094B-038-191-C	38	191.93 <i>7.556</i>	82.55 <i>3.250</i>	31.75 <i>1.250</i>	Carbon Steel	Single Row	19.05	No Locking
# SP1-159-094B-039-191-C	39	196.99 <i>7.756</i>	82.55 <i>3.250</i>	31.75 <i>1.250</i>	Carbon Steel	Single Row	19.05	No Locking
# SP1-159-094B-040-191-C	40	202.04 <i>7.954</i>	82.55 <i>3.250</i>	31.75 <i>1.250</i>	Carbon Steel	Single Row	19.05	No Locking
# SP1-159-094B-041-191-C	41	207.09 <i>8.153</i>	82.55 <i>3.250</i>	31.75 <i>1.250</i>	Carbon Steel	Single Row	19.05	No Locking
# SP1-159-094B-042-191-C	42	212.14 <i>8.352</i>	82.55 <i>3.250</i>	31.75 <i>1.250</i>	Carbon Steel	Single Row	19.05	No Locking
# SP1-159-094B-043-191-C	43	217.19 <i>8.551</i>	82.55 <i>3.250</i>	31.75 <i>1.250</i>	Carbon Steel	Single Row	19.05	No Locking
# SP1-159-094B-044-191-C	44	222.24 <i>8.750</i>	82.55 <i>3.250</i>	31.75 <i>1.250</i>	Carbon Steel	Single Row	19.05	No Locking
# SP1-159-094B-045-191-C	45	227.29 <i>8.948</i>	82.55 <i>3.250</i>	31.75 <i>1.250</i>	Carbon Steel	Single Row	19.05	No Locking
# SP1-159-094B-046-191-C	46	232.34 <i>9.147</i>	82.55 <i>3.250</i>	31.75 <i>1.250</i>	Carbon Steel	Single Row	19.05	No Locking
# SP1-159-094B-047-191-C	47	237.39 <i>9.346</i>	82.55 <i>3.250</i>	31.75 <i>1.250</i>	Carbon Steel	Single Row	19.05	No Locking

# Indicates item not stocked at time of printing - Please enquire for lead time

Page 7 of 10

E&OE Pricing and all details subject to change without notice - Copyright Miniature Bearings Australia Pty Ltd

MBA Size Listings are a guide to sizes only and must not be solely relied on for critical design information.

## Sprockets - 15.88 x 9.4mm - Simplex - Carbon Steel - Plain Bore

Part Number	Teeth No.	PCD mm <i>inches</i>	Hub Diameter (D1) mm <i>inches</i>	Overall Width (L) mm <i>inches</i>	Material mm <i>inches</i>	Type / Rows	Bore (d)	Locking Method
# SP1-159-094B-048-254-C	48	242.44 <i>9.545</i>	82.55 <i>3.250</i>	31.75 <i>1.250</i>	Carbon Steel	Single Row	25.4	No Locking
# SP1-159-094B-049-254-C	49	247.49 <i>9.744</i>	82.55 <i>3.250</i>	31.75 <i>1.250</i>	Carbon Steel	Single Row	25.4	No Locking
# SP1-159-094B-050-254-C	50	252.55 <i>9.943</i>	95.25 <i>3.750</i>	31.75 <i>1.250</i>	Carbon Steel	Single Row	25.4	No Locking
# SP1-159-094B-051-254-C	51	257.6 <i>10.142</i>	95.25 <i>3.750</i>	31.75 <i>1.250</i>	Carbon Steel	Single Row	25.4	No Locking
# SP1-159-094B-052-254-C	52	262.65 <i>10.341</i>	95.25 <i>3.750</i>	31.75 <i>1.250</i>	Carbon Steel	Single Row	25.4	No Locking
# SP1-159-094B-053-254-C	53	267.7 <i>10.539</i>	95.25 <i>3.750</i>	31.75 <i>1.250</i>	Carbon Steel	Single Row	25.4	No Locking
# SP1-159-094B-054-254-C	54	272.75 <i>10.738</i>	95.25 <i>3.750</i>	31.75 <i>1.250</i>	Carbon Steel	Single Row	25.4	No Locking
# SP1-159-094B-055-254-C	55	277.8 <i>10.937</i>	95.25 <i>3.750</i>	31.75 <i>1.250</i>	Carbon Steel	Single Row	25.4	No Locking
# SP1-159-094B-056-254-C	56	282.85 <i>11.136</i>	95.25 <i>3.750</i>	31.75 <i>1.250</i>	Carbon Steel	Single Row	25.4	No Locking
# SP1-159-094B-057-254-C	57	287.9 <i>11.335</i>	95.25 <i>3.750</i>	31.75 <i>1.250</i>	Carbon Steel	Single Row	25.4	No Locking

# Indicates item not stocked at time of printing - Please enquire for lead time

Page 8 of 10

E&OE Pricing and all details subject to change without notice - Copyright Miniature Bearings Australia Pty Ltd

MBA Size Listings are a guide to sizes only and must not be solely relied on for critical design information.



## Sprockets - 15.88 x 9.4mm - Simplex - Carbon Steel - Plain Bore

Part Number	Teeth No.	PCD mm <i>inches</i>	Hub Diameter (D1) mm <i>inches</i>	Overall Width (L) mm <i>inches</i>	Material mm <i>inches</i>	Type / Rows	Bore (d)	Locking Method
# SP1-159-094B-058-254-C	58	292.95 <i>11.533</i>	95.25 <i>3.750</i>	31.75 <i>1.250</i>	Carbon Steel	Single Row	25.4	No Locking
# SP1-159-094B-059-254-C	59	298 <i>11.732</i>	95.25 <i>3.750</i>	31.75 <i>1.250</i>	Carbon Steel	Single Row	25.4	No Locking
# SP1-159-094B-060-254-C	60	303.05 <i>11.931</i>	95.25 <i>3.750</i>	31.75 <i>1.250</i>	Carbon Steel	Single Row	25.4	No Locking
# SP1-159-094B-070-254-C	70	353.56 <i>13.920</i>	95.25 <i>3.750</i>	31.75 <i>1.250</i>	Carbon Steel	Single Row	25.4	No Locking
# SP1-159-094B-072-254-C	72	363.67 <i>14.318</i>	95.25 <i>3.750</i>	31.75 <i>1.250</i>	Carbon Steel	Single Row	25.4	No Locking
# SP1-159-094B-076-254-C	76	383.87 <i>15.113</i>	95.25 <i>3.750</i>	31.75 <i>1.250</i>	Carbon Steel	Single Row	25.4	No Locking
# SP1-159-094B-080-254-C	80	404.07 <i>15.908</i>	95.25 <i>3.750</i>	31.75 <i>1.250</i>	Carbon Steel	Single Row	25.4	No Locking
# SP1-159-094B-084-254-C	84	424.28 <i>16.704</i>	95.25 <i>3.750</i>	31.75 <i>1.250</i>	Carbon Steel	Single Row	25.4	No Locking
# SP1-159-094B-095-254-C	95	479.84 <i>18.891</i>	95.25 <i>3.750</i>	31.75 <i>1.250</i>	Carbon Steel	Single Row	25.4	No Locking
# SP1-159-094B-096-254-C	96	484.89 <i>19.090</i>	95.25 <i>3.750</i>	31.75 <i>1.250</i>	Carbon Steel	Single Row	25.4	No Locking

# Indicates item not stocked at time of printing - Please enquire for lead time

Page 9 of 10

E&OE Pricing and all details subject to change without notice - Copyright Miniature Bearings Australia Pty Ltd

MBA Size Listings are a guide to sizes only and must not be solely relied on for critical design information.

## Sprockets - 15.88 x 9.4mm - Simplex - Carbon Steel - Plain Bore

Part Number	Teeth No.	PCD mm	Hub Diameter (D1) mm	Overall Width (L) mm	Material mm	Type / Rows	Bore (d)	Locking Method
		<i>inches</i>	<i>inches</i>	<i>inches</i>	<i>inches</i>			
# SP1-159-094B-112-254-C	112	565.7 <i>22.272</i>	-	-	Carbon Steel	Single Row	25.4	No Locking

# Indicates item not stocked at time of printing - Please enquire for lead time

E&OE Pricing and all details subject to change without notice - Copyright Miniature Bearings Australia Pty Ltd

MBA Size Listings are a guide to sizes only and must not be solely relied on for critical design information.

DISTRIBUTED BY

Distributed By:

