



Standoffs - Hexagonal

10/4/2018

Indicates item not stocked at time of printing - Please enquire for lead time

E&OE Pricing and all details subject to change without notice - Copyright Miniature Bearings Australia Pty Ltd

MBA Size Listings are a guide to sizes only and must not be solely relied on for critical design information.

Page 1 of 10

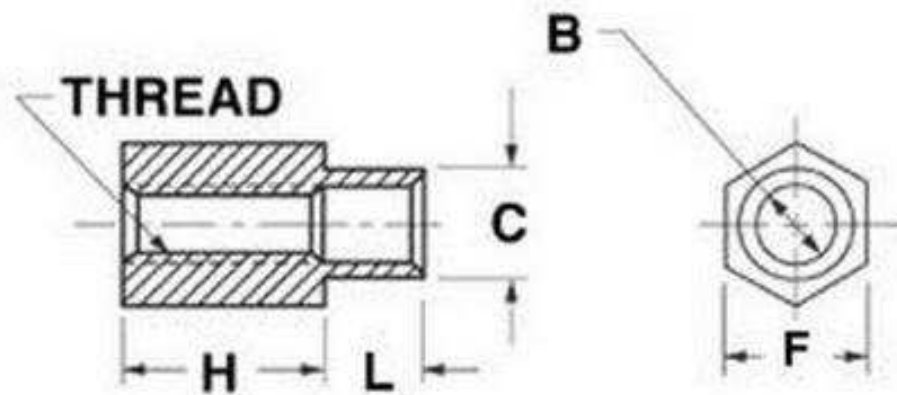
INFORMATION

Swage Type - Threaded - Brass or Stainless Steel. Internal threaded pillars.

Indicates item not stocked at time of printing - Please enquire for lead time

E&OE Pricing and all details subject to change without notice - Copyright Miniature Bearings Australia Pty Ltd

MBA Size Listings are a guide to sizes only and must not be solely relied on for critical design information.



Indicates item not stocked at time of printing - Please enquire for lead time

E&OE Pricing and all details subject to change without notice - Copyright Miniature Bearings Australia Pty Ltd

MBA Size Listings are a guide to sizes only and must not be solely relied on for critical design information.

Standoffs - Hexagonal

Part Number	Thread Size	Body Height (H) mm <i>inches</i>	Shank Length (L) mm <i>inches</i>	Panel Thickness mm <i>inches</i>	Shank Diameter (C) mm <i>inches</i>	Across Flats (F) mm <i>inches</i>	Material	Inside Shank Diameter (B) mm <i>inches</i>
# SHX-TO-0285C-06-0301-S3	4-40	3.18 <i>0.125</i>	1.91 <i>0.075</i>	0.795 <i>0.031</i>	4.775 (+0.000/-0.076) <i>0.188</i>	6.35 <i>0.250</i>	303 Stainless	3.810 (+0.076/-0.000) <i>0.150</i>
# SHX-TO-0285C-06-0302-S3	4-40	3.18 <i>0.125</i>	2.67 <i>0.105</i>	1.588 <i>0.063</i>	4.775 (+0.000/-0.076) <i>0.188</i>	6.35 <i>0.250</i>	303 Stainless	3.810 (+0.051/-0.000) <i>0.150</i>
# SHX-TO-0350C-06-0301-BZ	6-32	3.18 <i>0.125</i>	1.91 <i>0.075</i>	0.795 <i>0.031</i>	4.775 (+0.000/-0.076) <i>0.188</i>	6.35 <i>0.250</i>	Brass / Zinc Plated	3.810 (+0.076/-0.000) <i>0.150</i>
# SHX-TO-0350C-06-0301-S3	6-32	3.18 <i>0.125</i>	1.91 <i>0.075</i>	0.795 <i>0.031</i>	4.775 (+0.000/-0.076) <i>0.188</i>	6.35 <i>0.250</i>	303 Stainless	3.810 (+0.051/-0.000) <i>0.150</i>
# SHX-TO-0350C-06-0302-BZ	6-32	3.18 <i>0.125</i>	2.67 <i>0.105</i>	1.588 <i>0.063</i>	4.775 (+0.000/-0.076) <i>0.188</i>	6.35 <i>0.250</i>	Brass / Zinc Plated	3.810 (+0.076/-0.000) <i>0.150</i>
# SHX-TO-0350C-06-0302-S3	6-32	3.18 <i>0.125</i>	2.67 <i>0.105</i>	1.588 <i>0.063</i>	4.775 (+0.000/-0.076) <i>0.188</i>	6.35 <i>0.250</i>	303 Stainless	3.810 (+0.051/-0.000) <i>0.150</i>
# SHX-TO-0350C-06-0303-BZ	6-32	3.18 <i>0.125</i>	3.43 <i>0.135</i>	2.383 <i>0.094</i>	4.775 (+0.000/-0.076) <i>0.188</i>	6.35 <i>0.250</i>	Brass / Zinc Plated	3.810 (+0.076/-0.000) <i>0.150</i>
# SHX-TO-0350C-06-0303-S3	6-32	3.18 <i>0.125</i>	3.43 <i>0.135</i>	2.383 <i>0.094</i>	4.775 (+0.000/-0.076) <i>0.188</i>	6.35 <i>0.250</i>	303 Stainless	3.810 (+0.051/-0.000) <i>0.150</i>

Indicates item not stocked at time of printing - Please enquire for lead time

Page 4 of 10

E&OE Pricing and all details subject to change without notice - Copyright Miniature Bearings Australia Pty Ltd
MBA Size Listings are a guide to sizes only and must not be solely relied on for critical design information.

Standoffs - Hexagonal

Part Number	Thread Size	Body Height (H) mm <i>inches</i>	Shank Length (L) mm <i>inches</i>	Panel Thickness mm <i>inches</i>	Shank Diameter (C) mm <i>inches</i>	Across Flats (F) mm <i>inches</i>	Material	Inside Shank Diameter (B) mm <i>inches</i>
# SHX-TO-0350C-06-0304-BZ	6-32	3.18 <i>0.125</i>	4.19 <i>0.165</i>	3.175 <i>0.125</i>	4.775 (+0.000/-0.076) <i>0.188</i>	6.35 <i>0.250</i>	Brass / Zinc Plated	3.810 (+0.076/-0.000)
# SHX-TO-0350C-06-0304-S3	6-32	3.18 <i>0.125</i>	4.19 <i>0.165</i>	3.175 <i>0.125</i>	4.775 (+0.000/-0.076) <i>0.188</i>	6.35 <i>0.250</i>	303 Stainless	3.810 (+0.051/-0.000)
# SHX-TO-0350C-06-0306-BZ	6-32	3.18 <i>0.125</i>	5.84 <i>0.230</i>	4.775 <i>0.188</i>	4.775 (+0.000/-0.076) <i>0.188</i>	6.35 <i>0.250</i>	Brass / Zinc Plated	3.810 (+0.076/-0.000)
# SHX-TO-0350C-06-0306-S3	6-32	3.18 <i>0.125</i>	5.84 <i>0.230</i>	4.775 <i>0.188</i>	4.775 (+0.000/-0.076) <i>0.188</i>	6.35 <i>0.250</i>	303 Stainless	3.810 (+0.051/-0.000)
# SHX-TO-0350C-06-0501-BZ	6-32	4.76 <i>0.187</i>	1.91 <i>0.075</i>	0.795 <i>0.031</i>	4.775 (+0.000/-0.076) <i>0.187</i>	6.35 <i>0.250</i>	Brass / Zinc Plated	3.810 (+0.076/-0.000)
# SHX-TO-0350C-06-0501-S3	6-32	4.76 <i>0.187</i>	1.91 <i>0.075</i>	0.795 <i>0.031</i>	4.775 (+0.000/-0.076) <i>0.187</i>	6.35 <i>0.250</i>	303 Stainless	3.810 (+0.051/-0.000)
# SHX-TO-0350C-06-0502-S3	6-32	4.76 <i>0.187</i>	2.67 <i>0.105</i>	1.588 <i>0.063</i>	4.775 (+0.000/-0.076) <i>0.187</i>	6.35 <i>0.250</i>	303 Stainless	3.810 (+0.051/-0.000)
# SHX-TO-0350C-06-0502-BZ	6-32	4.76 <i>0.187</i>	2.67 <i>0.105</i>	1.588 <i>0.063</i>	4.775 (+0.000/-0.076) <i>0.187</i>	6.35 <i>0.250</i>	Brass / Zinc Plated	3.810 (+0.076/-0.000)

Indicates item not stocked at time of printing - Please enquire for lead time

Page 5 of 10

E&OE Pricing and all details subject to change without notice - Copyright Miniature Bearings Australia Pty Ltd

MBA Size Listings are a guide to sizes only and must not be solely relied on for critical design information.

Standoffs - Hexagonal

Part Number	Thread Size	Body Height (H) mm <i>inches</i>	Shank Length (L) mm <i>inches</i>	Panel Thickness mm <i>inches</i>	Shank Diameter (C) mm <i>inches</i>	Across Flats (F) mm <i>inches</i>	Material	Inside Shank Diameter (B) mm <i>inches</i>
# SHX-TO-0350C-06-0503-BZ	6-32	4.76 <i>0.187</i>	3.43 <i>0.135</i>	2.383 <i>0.094</i>	4.775 (+0.000/-0.076) <i>0.187</i>	6.35 <i>0.250</i>	Brass / Zinc Plated	3.810 (+0.076/-0.000)
# SHX-TO-0350C-06-0503-S3	6-32	4.76 <i>0.187</i>	3.43 <i>0.135</i>	2.383 <i>0.094</i>	4.775 (+0.000/-0.076) <i>0.187</i>	6.35 <i>0.250</i>	303 Stainless	3.810 (+0.051/-0.000)
# SHX-TO-0350C-06-0504-BZ	6-32	4.76 <i>0.187</i>	4.19 <i>0.165</i>	3.175 <i>0.125</i>	4.775 (+0.000/-0.076) <i>0.187</i>	6.35 <i>0.250</i>	Brass / Zinc Plated	3.810 (+0.076/-0.000)
# SHX-TO-0350C-06-0504-S3	6-32	4.76 <i>0.187</i>	4.19 <i>0.165</i>	3.175 <i>0.125</i>	4.775 (+0.000/-0.076) <i>0.187</i>	6.35 <i>0.250</i>	303 Stainless	3.810 (+0.051/-0.000)
# SHX-TO-0350C-06-0506-BZ	6-32	4.76 <i>0.187</i>	5.84 <i>0.230</i>	4.775 <i>0.188</i>	4.775 (+0.000/-0.076) <i>0.187</i>	6.35 <i>0.250</i>	Brass / Zinc Plated	3.810 (+0.076/-0.000)
# SHX-TO-0350C-06-0506-S3	6-32	4.76 <i>0.187</i>	5.84 <i>0.230</i>	4.775 <i>0.188</i>	4.775 (+0.000/-0.076) <i>0.187</i>	6.35 <i>0.250</i>	303 Stainless	3.810 (+0.051/-0.000)
# SHX-TO-0350C-06-0601-BZ	6-32	6.35 <i>0.250</i>	1.91 <i>0.075</i>	0.795 <i>0.031</i>	4.775 (+0.000/-0.076) <i>0.250</i>	6.35 <i>0.250</i>	Brass / Zinc Plated	3.810 (+0.076/-0.000)
# SHX-TO-0350C-06-0601-S3	6-32	6.35 <i>0.250</i>	1.91 <i>0.075</i>	0.795 <i>0.031</i>	4.775 (+0.000/-0.076) <i>0.250</i>	6.35 <i>0.250</i>	303 Stainless	3.810 (+0.051/-0.000)

Indicates item not stocked at time of printing - Please enquire for lead time

Page 6 of 10

E&OE Pricing and all details subject to change without notice - Copyright Miniature Bearings Australia Pty Ltd

MBA Size Listings are a guide to sizes only and must not be solely relied on for critical design information.

Standoffs - Hexagonal

Part Number	Thread Size	Body Height (H) mm <i>inches</i>	Shank Length (L) mm <i>inches</i>	Panel Thickness mm <i>inches</i>	Shank Diameter (C) mm <i>inches</i>	Across Flats (F) mm <i>inches</i>	Material	Inside Shank Diameter (B) mm <i>inches</i>
# SHX-TO-0350C-06-0602-BZ	6-32	6.35 <i>0.250</i>	2.67 <i>0.105</i>	1.588 <i>0.063</i>	4.775 (+0.000/-0.076) <i>0.188</i>	6.35 <i>0.250</i>	Brass / Zinc Plated	3.810 (+0.076/-0.000)
# SHX-TO-0350C-06-0602-S3	6-32	6.35 <i>0.250</i>	2.67 <i>0.105</i>	1.588 <i>0.063</i>	4.775 (+0.000/-0.076) <i>0.188</i>	6.35 <i>0.250</i>	303 Stainless	3.810 (+0.051/-0.000)
# SHX-TO-0350C-06-0603-S3	6-32	6.35 <i>0.250</i>	3.43 <i>0.135</i>	2.383 <i>0.094</i>	4.775 (+0.000/-0.076) <i>0.188</i>	6.35 <i>0.250</i>	303 Stainless	3.810 (+0.051/-0.000)
# SHX-TO-0350C-06-0603-BZ	6-32	6.35 <i>0.250</i>	3.43 <i>0.135</i>	2.383 <i>0.094</i>	4.775 (+0.000/-0.076) <i>0.188</i>	6.35 <i>0.250</i>	Brass / Zinc Plated	3.810 (+0.076/-0.000)
# SHX-TO-0350C-06-0604-BZ	6-32	6.35 <i>0.250</i>	4.19 <i>0.165</i>	3.175 <i>0.125</i>	4.775 (+0.000/-0.076) <i>0.188</i>	6.35 <i>0.250</i>	Brass / Zinc Plated	3.810 (+0.076/-0.000)
# SHX-TO-0350C-06-0604-S3	6-32	6.35 <i>0.250</i>	4.19 <i>0.165</i>	3.175 <i>0.125</i>	4.775 (+0.000/-0.076) <i>0.188</i>	6.35 <i>0.250</i>	303 Stainless	3.810 (+0.051/-0.000)
# SHX-TO-0350C-06-0606-BZ	6-32	6.35 <i>0.250</i>	5.84 <i>0.230</i>	4.775 <i>0.188</i>	4.775 (+0.000/-0.076) <i>0.188</i>	6.35 <i>0.250</i>	Brass / Zinc Plated	3.810 (+0.076/-0.000)
# SHX-TO-0350C-06-0606-S3	6-32	6.35 <i>0.250</i>	5.84 <i>0.230</i>	4.775 <i>0.188</i>	4.775 (+0.000/-0.076) <i>0.188</i>	6.35 <i>0.250</i>	303 Stainless	3.810 (+0.051/-0.000)

Indicates item not stocked at time of printing - Please enquire for lead time

Page 7 of 10

E&OE Pricing and all details subject to change without notice - Copyright Miniature Bearings Australia Pty Ltd

MBA Size Listings are a guide to sizes only and must not be solely relied on for critical design information.

Standoffs - Hexagonal

Part Number	Thread Size	Body Height (H) mm <i>inches</i>	Shank Length (L) mm <i>inches</i>	Panel Thickness mm <i>inches</i>	Shank Diameter (C) mm <i>inches</i>	Across Flats (F) mm <i>inches</i>	Material	Inside Shank Diameter (B) mm <i>inches</i>
# SHX-TO-0350C-06-1001-BZ	6-32	9.53 <i>0.375</i>	1.91 <i>0.075</i>	0.795 <i>0.031</i>	4.775 (+0.000/-0.076) <i>0.188</i>	6.35 <i>0.250</i>	Brass / Zinc Plated	3.810 (+0.076/-0.000) <i>0.150</i>
# SHX-TO-0350C-06-1001-S3	6-32	9.53 <i>0.375</i>	1.91 <i>0.075</i>	0.795 <i>0.031</i>	4.775 (+0.000/-0.076) <i>0.188</i>	6.35 <i>0.250</i>	303 Stainless	3.810 (+0.051/-0.000) <i>0.150</i>
# SHX-TO-0350C-06-1002-BZ	6-32	9.53 <i>0.375</i>	2.67 <i>0.105</i>	1.588 <i>0.063</i>	4.775 (+0.000/-0.076) <i>0.188</i>	6.35 <i>0.250</i>	Brass / Zinc Plated	3.810 (+0.076/-0.000) <i>0.150</i>
# SHX-TO-0350C-06-1002-S3	6-32	9.53 <i>0.375</i>	2.67 <i>0.105</i>	1.588 <i>0.063</i>	4.775 (+0.000/-0.076) <i>0.188</i>	6.35 <i>0.250</i>	303 Stainless	3.810 (+0.051/-0.000) <i>0.150</i>
# SHX-TO-0350C-06-1003-BZ	6-32	9.53 <i>0.375</i>	3.43 <i>0.135</i>	2.383 <i>0.094</i>	4.775 (+0.000/-0.076) <i>0.188</i>	6.35 <i>0.250</i>	Brass / Zinc Plated	3.810 (+0.076/-0.000) <i>0.150</i>
# SHX-TO-0350C-06-1003-S3	6-32	9.53 <i>0.375</i>	3.43 <i>0.135</i>	2.383 <i>0.094</i>	4.775 (+0.000/-0.076) <i>0.188</i>	6.35 <i>0.250</i>	303 Stainless	3.810 (+0.051/-0.000) <i>0.150</i>
# SHX-TO-0350C-06-1004-BZ	6-32	9.53 <i>0.375</i>	4.19 <i>0.165</i>	3.175 <i>0.125</i>	4.775 (+0.000/-0.076) <i>0.188</i>	6.35 <i>0.250</i>	Brass / Zinc Plated	3.810 (+0.076/-0.000) <i>0.150</i>
# SHX-TO-0350C-06-1004-S3	6-32	9.53 <i>0.375</i>	4.19 <i>0.165</i>	3.175 <i>0.125</i>	4.775 (+0.000/-0.076) <i>0.188</i>	6.35 <i>0.250</i>	303 Stainless	3.810 (+0.051/-0.000) <i>0.150</i>

Indicates item not stocked at time of printing - Please enquire for lead time

Page 8 of 10

E&OE Pricing and all details subject to change without notice - Copyright Miniature Bearings Australia Pty Ltd

MBA Size Listings are a guide to sizes only and must not be solely relied on for critical design information.

Standoffs - Hexagonal

Part Number	Thread Size	Body Height (H) mm <i>inches</i>	Shank Length (L) mm <i>inches</i>	Panel Thickness mm <i>inches</i>	Shank Diameter (C) mm <i>inches</i>	Across Flats (F) mm <i>inches</i>	Material	Inside Shank Diameter (B) mm <i>inches</i>
# SHX-TO-0350C-06-1006-S3	6-32	9.53 <i>0.375</i>	5.84 <i>0.230</i>	4.775 <i>0.188</i>	4.775 (+0.000/-0.076) <i>0.188</i>	6.35 <i>0.250</i>	303 Stainless	3.810 (+0.051/-0.000) <i>0.150</i>
# SHX-TO-0350C-06-1006-BZ	6-32	9.53 <i>0.375</i>	5.84 <i>0.230</i>	4.775 <i>0.188</i>	4.775 (+0.000/-0.076) <i>0.188</i>	6.35 <i>0.250</i>	Brass / Zinc Plated	3.810 (+0.076/-0.000) <i>0.150</i>
# SHX-TO-0350C-06-1301-BZ	6-32	12.70 <i>0.500</i>	1.91 <i>0.075</i>	0.795 <i>0.031</i>	4.775 (+0.000/-0.076) <i>0.188</i>	6.35 <i>0.250</i>	Brass / Zinc Plated	3.810 (+0.076/-0.000) <i>0.150</i>
# SHX-TO-0350C-06-1301-S3	6-32	12.70 <i>0.500</i>	1.91 <i>0.075</i>	0.795 <i>0.031</i>	4.775 (+0.000/-0.076) <i>0.188</i>	6.35 <i>0.250</i>	303 Stainless	3.810 (+0.051/-0.000) <i>0.150</i>
# SHX-TO-0350C-06-1302-BZ	6-32	12.70 <i>0.500</i>	2.67 <i>0.105</i>	1.588 <i>0.063</i>	4.775 (+0.000/-0.076) <i>0.188</i>	6.35 <i>0.250</i>	Brass / Zinc Plated	3.810 (+0.076/-0.000) <i>0.150</i>
# SHX-TO-0350C-06-1302-S3	6-32	12.70 <i>0.500</i>	2.67 <i>0.105</i>	1.588 <i>0.063</i>	4.775 (+0.000/-0.076) <i>0.188</i>	6.35 <i>0.250</i>	303 Stainless	3.810 (+0.051/-0.000) <i>0.150</i>
# SHX-TO-0350C-06-1303-BZ	6-32	12.70 <i>0.500</i>	3.43 <i>0.135</i>	2.383 <i>0.094</i>	4.775 (+0.000/-0.076) <i>0.188</i>	6.35 <i>0.250</i>	Brass / Zinc Plated	3.810 (+0.076/-0.000) <i>0.150</i>
# SHX-TO-0350C-06-1303-S3	6-32	12.70 <i>0.500</i>	3.43 <i>0.135</i>	2.383 <i>0.094</i>	4.775 (+0.000/-0.076) <i>0.188</i>	6.35 <i>0.250</i>	303 Stainless	3.810 (+0.051/-0.000) <i>0.150</i>

Indicates item not stocked at time of printing - Please enquire for lead time

Page 9 of 10

E&OE Pricing and all details subject to change without notice - Copyright Miniature Bearings Australia Pty Ltd

MBA Size Listings are a guide to sizes only and must not be solely relied on for critical design information.

Standoffs - Hexagonal

Part Number	Thread Size	Body Height (H) mm <i>inches</i>	Shank Length (L) mm <i>inches</i>	Panel Thickness mm <i>inches</i>	Shank Diameter (C) mm <i>inches</i>	Across Flats (F) mm <i>inches</i>	Material	Inside Shank Diameter (B) mm <i>inches</i>
# SHX-TO-0350C-06-1304-BZ	6-32	12.70 <i>0.500</i>	4.19 <i>0.165</i>	3.175 <i>0.125</i>	4.775 (+0.000/-0.076) <i>0.188</i>	6.35 <i>0.250</i>	Brass / Zinc Plated	3.810 (+0.076/-0.000)
# SHX-TO-0350C-06-1304-S3	6-32	12.70 <i>0.500</i>	4.19 <i>0.165</i>	3.175 <i>0.125</i>	4.775 (+0.000/-0.076) <i>0.188</i>	6.35 <i>0.250</i>	303 Stainless	3.810 (+0.051/-0.000)
# SHX-TO-0350C-06-1306-S3	6-32	12.70 <i>0.500</i>	5.84 <i>0.230</i>	4.775 <i>0.188</i>	4.775 (+0.000/-0.076) <i>0.188</i>	6.35 <i>0.250</i>	303 Stainless	3.810 (+0.051/-0.000)
# SHX-TO-0350C-06-1306-BZ	6-32	12.70 <i>0.500</i>	5.84 <i>0.230</i>	4.775 <i>0.188</i>	4.775 (+0.000/-0.076) <i>0.188</i>	6.35 <i>0.250</i>	Brass / Zinc Plated	3.810 (+0.076/-0.000)

Indicates item not stocked at time of printing - Please enquire for lead time

Page 10 of 10

E&OE Pricing and all details subject to change without notice - Copyright Miniature Bearings Australia Pty Ltd

MBA Size Listings are a guide to sizes only and must not be solely relied on for critical design information.

DISTRIBUTED BY

Distributed By:

