



Tensioner - Drive - Adjustable Angle

10/4/2018

Indicates item not stocked at time of printing - Please enquire for lead time

E&OE Pricing and all details subject to change without notice - Copyright Miniature Bearings Australia Pty Ltd

MBA Size Listings are a guide to sizes only and must not be solely relied on for critical design information.

INFORMATION

Use with idler shafts and idler pulleys. Fixed base with adjustable arm through 360^o.

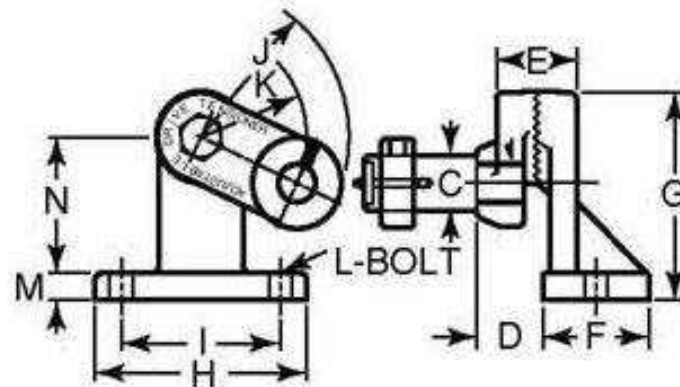
Idler shaft and pulleys not included with tensioner

This catalogue to be read in conjunction with information at <http://www.minibearings.com.au//categories/idler+shaft/>

Indicates item not stocked at time of printing - Please enquire for lead time

E&OE Pricing and all details subject to change without notice - Copyright Miniature Bearings Australia Pty Ltd

MBA Size Listings are a guide to sizes only and must not be solely relied on for critical design information.



SHAFT NOT INCLUDED

Indicates item not stocked at time of printing - Please enquire for lead time

E&OE Pricing and all details subject to change without notice - Copyright Miniature Bearings Australia Pty Ltd

MBA Size Listings are a guide to sizes only and must not be solely relied on for critical design information.

Tensioner - Drive - Adjustable Angle

| Part Number | Bore (C) mm | Arm Width (D) mm | E mm | Plate Width (F) mm | Overall Height (G) mm | Overall Width (H) mm | Bolt Centres (I) mm | Centre of Mount to End (J) mm | Centre of Mount to Bore (K) mm | Bolt Size (L) |
|-------------|------------------------|------------------------|------------------------|------------------------|-------------------------|-------------------------|-------------------------|-------------------------------|--------------------------------|---------------|
| | <i>inches</i> | <i>inches</i> | <i>inches</i> | <i>inches</i> | <i>inches</i> | <i>inches</i> | <i>inches</i> | <i>inches</i> | <i>inches</i> | |
| # IDC-67RS | 25.400 <i>1.000</i> | 31.750 <i>1.250</i> | 38.100 <i>1.500</i> | 50.800 <i>2.000</i> | 101.600 <i>4.000</i> | 101.600 <i>4.000</i> | 76.200 <i>3.000</i> | 76.200 <i>3.000</i> | 50.800 <i>2.000</i> | 3/4-16 x 9.53 |
| # IDC-66RS | 25.400 <i>1.000</i> | 31.750 <i>1.250</i> | 38.100 <i>1.500</i> | 50.800 <i>2.000</i> | 101.600 <i>4.000</i> | 101.600 <i>4.000</i> | 76.200 <i>3.000</i> | 76.200 <i>3.000</i> | 50.800 <i>2.000</i> | 3/4-10 x 9.53 |
| # IDC-69RS | 38.100 <i>1.500</i> | 44.450 <i>1.750</i> | 60.325 <i>2.375</i> | 88.900 <i>3.500</i> | 187.325 <i>7.375</i> | 190.500 <i>7.500</i> | 152.400 <i>6.000</i> | 165.100 <i>6.500</i> | 127.000 <i>5.000</i> | 1-14 x 15.88 |

Indicates item not stocked at time of printing - Please enquire for lead time

E&OE Pricing and all details subject to change without notice - Copyright Miniature Bearings Australia Pty Ltd
MBA Size Listings are a guide to sizes only and must not be solely relied on for critical design information.

DISTRIBUTED BY

Distributed By:

