



# Tensioner - Drive - Double Adjust - Base Mount

10/4/2018

# Indicates item not stocked at time of printing - Please enquire for lead time

E&OE Pricing and all details subject to change without notice - Copyright Miniature Bearings Australia Pty Ltd

MBA Size Listings are a guide to sizes only and must not be solely relied on for critical design information.

## INFORMATION

Use with idler shafts and idler pulleys. Adjusting slot assists with precise adjustments.

Idler shaft and pulleys not included with tensioner

Rotating arm gives operator 360<sup>o</sup> controlled tensioning.

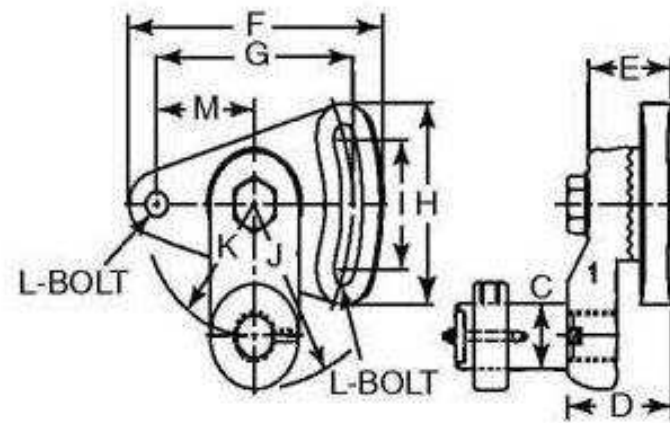
Serrated teeth to prevent slippage once tightened.

This catalogue to be read in conjunction with information at <http://www.minibearings.com.au/categories/idler+shaft/>

# Indicates item not stocked at time of printing - Please enquire for lead time

E&OE Pricing and all details subject to change without notice - Copyright Miniature Bearings Australia Pty Ltd

MBA Size Listings are a guide to sizes only and must not be solely relied on for critical design information.



SHAFT NOT INCLUDED

# Indicates item not stocked at time of printing - Please enquire for lead time

E&OE Pricing and all details subject to change without notice - Copyright Miniature Bearings Australia Pty Ltd

MBA Size Listings are a guide to sizes only and must not be solely relied on for critical design information.

## Tensioner - Drive - Double Adjust - Base Mount

Part Number	Bore (C) mm	Overall Height (D) mm	Mount Thickness (E) mm	Overall Length (F) mm	G mm	Overall Width (H) mm	I mm	Centre of Mount to End (J) mm	Centre of Mount to Bore (K) mm	Bolt Size (L)
	<i>inches</i>	<i>inches</i>	<i>inches</i>	<i>inches</i>	<i>inches</i>	<i>inches</i>	<i>inches</i>	<i>inches</i>	<i>inches</i>	
# IDC-57RS	12.700 <i>0.500</i>	30.150 <i>1.187</i>	33.325 <i>1.312</i>	69.056 <i>2.719</i>	50.800 <i>2.000</i>	49.987 <i>1.968</i>	31.750 <i>1.250</i>	39.675 <i>1.562</i>	25.400 <i>1.000</i>	6.35
# IDC-59RS	25.400 <i>1.000</i>	47.625 <i>1.875</i>	38.100 <i>1.500</i>	117.475 <i>4.625</i>	88.900 <i>3.500</i>	77.775 <i>3.062</i>	52.375 <i>2.062</i>	76.200 <i>3.000</i>	50.800 <i>2.000</i>	3/16-16 x 9.53
# IDC-58RS	25.400 <i>1.000</i>	47.625 <i>1.875</i>	38.100 <i>1.500</i>	117.475 <i>4.625</i>	88.900 <i>3.500</i>	77.775 <i>3.062</i>	52.375 <i>2.062</i>	76.200 <i>3.000</i>	50.800 <i>2.000</i>	3/4-10 x 9.53
# IDC-61RS	38.100 <i>1.500</i>	0.000 <i>0.000</i>	60.325 <i>2.375</i>	176.213 <i>6.938</i>	133.350 <i>5.250</i>	115.875 <i>4.562</i>	76.200 <i>3.000</i>	165.100 <i>6.500</i>	127.000 <i>5.000</i>	1-14 x 15.88
# IDC-60RS	38.100 <i>1.500</i>	0.000 <i>0.000</i>	60.325 <i>2.375</i>	176.213 <i>6.938</i>	133.350 <i>5.250</i>	115.875 <i>4.562</i>	76.200 <i>3.000</i>	165.100 <i>6.500</i>	127.000 <i>5.000</i>	1-8 x 15.88

# Indicates item not stocked at time of printing - Please enquire for lead time

E&OE Pricing and all details subject to change without notice - Copyright Miniature Bearings Australia Pty Ltd  
MBA Size Listings are a guide to sizes only and must not be solely relied on for critical design information.

DISTRIBUTED BY

Distributed By:

