



# Tensioner - Drive - Single Adjusting - Shaft Mount

10/4/2018

# Indicates item not stocked at time of printing - Please enquire for lead time

E&OE Pricing and all details subject to change without notice - Copyright Miniature Bearings Australia Pty Ltd

MBA Size Listings are a guide to sizes only and must not be solely relied on for critical design information.

Page 1 of 4

## INFORMATION

Use with idler shafts and idler pulleys. Mounts on any free point of a fixed shaft allowing controlled tensioning around 360<sup>o</sup>.

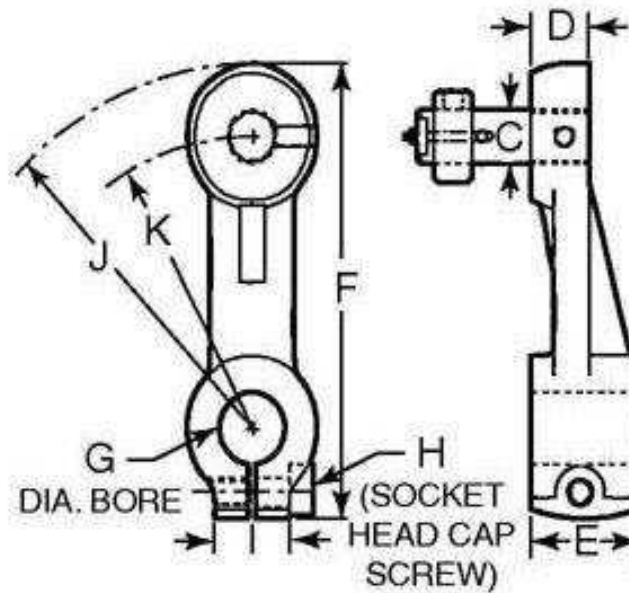
Idler shaft and pulleys not included with tensioner

This catalogue to be read in conjunction with information at <http://www.minibearings.com.au/categories/idler+shaft/>

# Indicates item not stocked at time of printing - Please enquire for lead time

E&OE Pricing and all details subject to change without notice - Copyright Miniature Bearings Australia Pty Ltd

MBA Size Listings are a guide to sizes only and must not be solely relied on for critical design information.



SHAFT NOT INCLUDED

# Indicates item not stocked at time of printing - Please enquire for lead time

E&OE Pricing and all details subject to change without notice - Copyright Miniature Bearings Australia Pty Ltd

MBA Size Listings are a guide to sizes only and must not be solely relied on for critical design information.

## Tensioner - Drive - Single Adjusting - Shaft Mount

Part Number	Bore (C) mm	D mm	Overall Width (E) mm	Overall Length (F) mm	Clamp Bore (G) mm	Bolt Size (H) mm	I mm	Centre of Clamp to End (J) mm	Centre of Clamp to Bore (K) mm	Approx Weight Kg
	<i>inches</i>	<i>inches</i>	<i>inches</i>	<i>inches</i>	<i>inches</i>	<i>inches</i>	<i>inches</i>	<i>inches</i>	<i>inches</i>	
# IDC-53RS	25.400 <i>1.000</i>	22.225 <i>0.875</i>	41.275 <i>1.625</i>	158.750 <i>6.250</i>	25.400 <i>1.000</i>	3/4-10 x 9.53	50.800 <i>2.000</i>	127.000 <i>5.000</i>	101.600 <i>4.000</i>	
# IDC-52RS	25.400 <i>1.000</i>	22.225 <i>0.875</i>	41.275 <i>1.625</i>	158.750 <i>6.250</i>	25.400 <i>1.000</i>	5/8-11- x 9.53	50.800 <i>2.000</i>	127.000 <i>5.000</i>	101.600 <i>4.000</i>	
# IDC-54RS	25.400 <i>1.000</i>	22.225 <i>0.875</i>	41.275 <i>1.625</i>	158.750 <i>6.250</i>	25.400 <i>1.000</i>	3/4-16 x 9.53	50.800 <i>2.000</i>	127.000 <i>5.000</i>	101.600 <i>4.000</i>	
# IDC-51RS	25.400 <i>1.000</i>	22.225 <i>0.875</i>	41.275 <i>1.625</i>	158.750 <i>6.250</i>	25.400 <i>1.000</i>	1/2-13 x9.53	50.800 <i>2.000</i>	127.000 <i>5.000</i>	101.600 <i>4.000</i>	
# IDC-56RS	38.100 <i>1.500</i>	33.325 <i>1.312</i>	73.025 <i>2.875</i>	238.125 <i>9.375</i>	38.100 <i>1.500</i>	1-14 x 12.70	76.200 <i>3.000</i>	190.500 <i>7.500</i>	152.400 <i>6.000</i>	
# IDC-55RS	38.100 <i>1.500</i>	33.325 <i>1.312</i>	73.025 <i>2.875</i>	238.125 <i>9.375</i>	38.100 <i>1.500</i>	1-8 x 12.70	76.200 <i>3.000</i>	190.500 <i>7.500</i>	152.400 <i>6.000</i>	

# Indicates item not stocked at time of printing - Please enquire for lead time

Page 4 of 4

E&OE Pricing and all details subject to change without notice - Copyright Miniature Bearings Australia Pty Ltd  
MBA Size Listings are a guide to sizes only and must not be solely relied on for critical design information.

DISTRIBUTED BY

Distributed By:

