



Tensioner - Fixed Angle

10/4/2018

Indicates item not stocked at time of printing - Please enquire for lead time

E&OE Pricing and all details subject to change without notice - Copyright Miniature Bearings Australia Pty Ltd

MBA Size Listings are a guide to sizes only and must not be solely relied on for critical design information.

INFORMATION

Use with idler shafts and idler pulleys. Can be mounted on top of any flat surface to provide horizontal tenaioning.

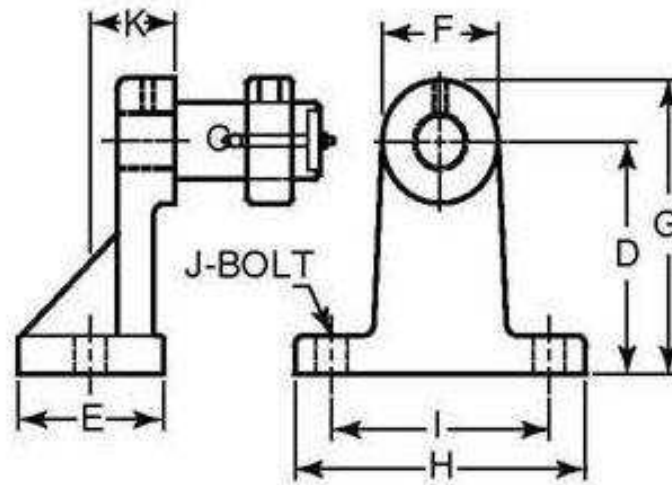
Idler shaft and pulleys not included with tensioner

This catalogue to be read in conjunction with information at <http://www.minibearings.com.au//categories/idler+shaft/>

Indicates item not stocked at time of printing - Please enquire for lead time

E&OE Pricing and all details subject to change without notice - Copyright Miniature Bearings Australia Pty Ltd

MBA Size Listings are a guide to sizes only and must not be solely relied on for critical design information.



SHAFT NOT INCLUDED

Indicates item not stocked at time of printing - Please enquire for lead time

E&OE Pricing and all details subject to change without notice - Copyright Miniature Bearings Australia Pty Ltd

MBA Size Listings are a guide to sizes only and must not be solely relied on for critical design information.

Tensioner - Fixed Angle

Part Number	Bore (C) mm <i>inches</i>	Base to Bore Centre (D) mm <i>inches</i>	Width (E) mm <i>inches</i>	F mm <i>inches</i>	Overall Height (G) mm <i>inches</i>	Overall Width (H) mm <i>inches</i>	Bolt Centres (I) mm <i>inches</i>	Bolt Size (J)	K mm <i>inches</i>	Approx Weight Kg
# IDC-75RS	12.700 <i>0.500</i>	38.100 <i>1.500</i>	28.575 <i>1.125</i>	25.400 <i>1.000</i>	50.800 <i>2.000</i>	60.325 <i>2.375</i>	44.450 <i>1.750</i>	3/8-16 x 6.35	14.275 <i>0.562</i>	0.13
# IDC-77RS	25.400 <i>1.000</i>	76.200 <i>3.000</i>	50.800 <i>2.000</i>	44.450 <i>1.750</i>	79.375 <i>3.125</i>	101.600 <i>4.000</i>	76.200 <i>3.000</i>	3/4-16 x 9.53	26.975 <i>1.062</i>	0.81
# IDC-76RS	25.400 <i>1.000</i>	76.200 <i>3.000</i>	50.800 <i>2.000</i>	44.450 <i>1.750</i>	79.375 <i>3.125</i>	101.600 <i>4.000</i>	76.200 <i>3.000</i>	3/4-10 x 9.53	26.975 <i>1.062</i>	0.81
# IDC-79RS	38.100 <i>1.500</i>	152.400 <i>6.000</i>	88.900 <i>3.500</i>	66.675 <i>2.625</i>	185.725 <i>7.312</i>	190.500 <i>7.500</i>	152.400 <i>6.000</i>	1-14 x 15.88	47.625 <i>1.875</i>	4.39
# IDC-78RS	38.100 <i>1.500</i>	152.400 <i>6.000</i>	88.900 <i>3.500</i>	66.675 <i>2.625</i>	185.725 <i>7.312</i>	190.500 <i>7.500</i>	152.400 <i>6.000</i>	1-8 x 15.88	47.625 <i>1.875</i>	4.39

Indicates item not stocked at time of printing - Please enquire for lead time

Page 4 of 4

E&OE Pricing and all details subject to change without notice - Copyright Miniature Bearings Australia Pty Ltd
MBA Size Listings are a guide to sizes only and must not be solely relied on for critical design information.

DISTRIBUTED BY

Distributed By:

