



Universal Joints - Single Joint - High Speed - Bored and Keyed

10/4/2018

Indicates item not stocked at time of printing - Please enquire for lead time

E&OE Pricing and all details subject to change without notice - Copyright Miniature Bearings Australia Pty Ltd

MBA Size Listings are a guide to sizes only and must not be solely relied on for critical design information.

INFORMATION

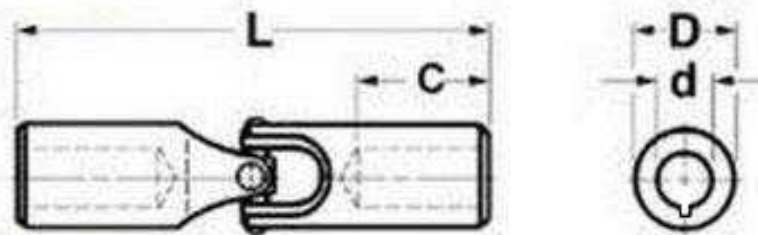
Carbon Steel. With keyway. Maximum operating angle 25 to 45 degrees (refer tables).

<http://www.minibearings.com.au/categories/covers/all/pics/>

Indicates item not stocked at time of printing - Please enquire for lead time

E&OE Pricing and all details subject to change without notice - Copyright Miniature Bearings Australia Pty Ltd

MBA Size Listings are a guide to sizes only and must not be solely relied on for critical design information.



Indicates item not stocked at time of printing - Please enquire for lead time

E&OE Pricing and all details subject to change without notice - Copyright Miniature Bearings Australia Pty Ltd

MBA Size Listings are a guide to sizes only and must not be solely relied on for critical design information.

Universal Joints - Single Joint - High Speed - Bored and Keyed

Part Number	OD (D) mm	Bore (d) mm	Length (L) mm	Type	Body Material	Bore Depth (C) mm	Maximum Inline Speed RPM	Max Operating Angle Deg.	Static Breaking Torque N.m	Other Information
	<i>inches</i>	<i>inches</i>	<i>inches</i>			<i>inches</i>				
# UJS-191-095BK-068-HC	19.05 <i>0.750</i>	9.53 <i>0.375</i>	68.263 <i>2.688</i>	Single	Carbon Steel	22.225 <i>0.875</i>	1750	25	86.77	
# UJS-254-127BK-086-HC	25.400 <i>1.000</i>	12.70 <i>0.500</i>	85.725 <i>3.375</i>	Single	Carbon Steel	25.400 <i>1.000</i>	1750	25	176.26	
# UJS-318-159BK-095-HC	31.750 <i>1.250</i>	15.88 <i>0.625</i>	95.250 <i>3.750</i>	Single	Carbon Steel	26.988 <i>1.063</i>	1750	25	589.78	
# UJS-381-191BK-108-HC	38.100 <i>1.500</i>	19.05 <i>0.750</i>	107.950 <i>4.250</i>	Single	Carbon Steel	30.163 <i>1.188</i>	1750	25	894.84	
# UJS-508-254BK-138-HC	50.800 <i>2.000</i>	25.40 <i>1.000</i>	138.113 <i>5.438</i>	Single	Carbon Steel	38.100 <i>1.500</i>	1750	25	1762.56	

Indicates item not stocked at time of printing - Please enquire for lead time

E&OE Pricing and all details subject to change without notice - Copyright Miniature Bearings Australia Pty Ltd

MBA Size Listings are a guide to sizes only and must not be solely relied on for critical design information.

DISTRIBUTED BY

Distributed By:

