



# Universal Joints - Single Joint - High Speed - Plain Bore - Stainless

10/4/2018

# Indicates item not stocked at time of printing - Please enquire for lead time

E&OE Pricing and all details subject to change without notice - Copyright Miniature Bearings Australia Pty Ltd

MBA Size Listings are a guide to sizes only and must not be solely relied on for critical design information.

## INFORMATION

303 Stainless Body with 440 Stainless Balls. Maximum operating angle 30 degrees (45 for hand operated applications). Zero backlash. Sealed lubrication. Light weight and low inertia. Not supplied with set screws or tapped holes.

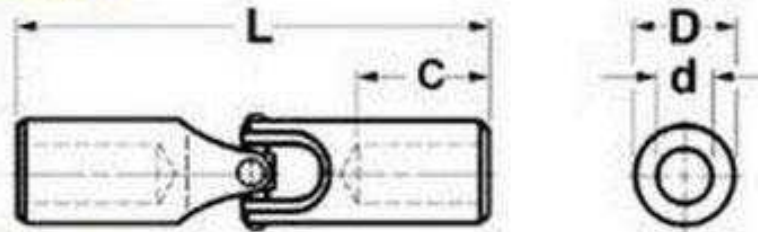
<http://www.minibearings.com.au/categories/covers/all/pics/>

# Indicates item not stocked at time of printing - Please enquire for lead time

E&OE Pricing and all details subject to change without notice - Copyright Miniature Bearings Australia Pty Ltd

MBA Size Listings are a guide to sizes only and must not be solely relied on for critical design information.

Single



# Indicates item not stocked at time of printing - Please enquire for lead time

E&OE Pricing and all details subject to change without notice - Copyright Miniature Bearings Australia Pty Ltd

MBA Size Listings are a guide to sizes only and must not be solely relied on for critical design information.

## Universal Joints - Single Joint - High Speed - Plain Bore - Stainless

Part Number	OD (D) mm	Bore (d) mm	Length (L) mm	Type	Body Material	Bore Depth (C) mm	Maximum Inline Speed RPM	Max Operating Angle Deg.	Max Inline Torque N.m	Other Information
	<i>inches</i>	<i>inches</i>	<i>inches</i>			<i>inches</i>				
UJS-048-000-025-HS34	4.76	Solid (Max Bore 3mm)	25.40	Single	303 / 440 Stainless		4000	30	0.11	Zero Backlash
	<i>0.187</i>		<i>1.000</i>							
# UJS-048-024-025-HS34	4.76	2.38	25.40	Single	303 / 440 Stainless	8.74	4000	30	0.11	Zero Backlash
	<i>0.187</i>	<i>0.094</i>	<i>1.000</i>			<i>0.344</i>				
# UJS-048-025-025-HS34	4.76	2.50	25.40	Single	303 / 440 Stainless	8.70	4000	30	0.11	Zero Backlash
	<i>0.187</i>	<i>0.098</i>	<i>1.000</i>			<i>0.343</i>				
UJS-048-030-025-HS34	4.76	3.00	25.40	Single	303 / 440 Stainless	8.70	4000	30	0.11	Zero Backlash
	<i>0.187</i>	<i>0.118</i>	<i>1.000</i>			<i>0.343</i>				
# UJS-048-032-025-HS34	4.76	3.18	25.40	Single	303 / 440 Stainless	8.74	4000	30	0.11	Zero Backlash
	<i>0.187</i>	<i>0.125</i>	<i>1.000</i>			<i>0.344</i>				
# UJS-060-030-029-HS3	6.00	3.00	29.00	Single	303 Stainless Steel	9.30	1750	25	5.00	
	<i>0.236</i>	<i>0.118</i>	<i>1.142</i>			<i>0.366</i>				
UJS-071-048-035-HS34	7.14	4.76	34.93	Single	303 / 440 Stainless	11.13	4000	30	0.45	Zero Backlash
	<i>0.281</i>	<i>0.187</i>	<i>1.375</i>			<i>0.438</i>				
# UJS-072-040-035-HS34	7.15	4.00	34.90	Single	303 / 440 Stainless	11.10	4000	30	0.44	Zero Backlash
	<i>0.281</i>	<i>0.157</i>	<i>1.374</i>			<i>0.437</i>				

# Indicates item not stocked at time of printing - Please enquire for lead time

Page 4 of 7

E&OE Pricing and all details subject to change without notice - Copyright Miniature Bearings Australia Pty Ltd  
MBA Size Listings are a guide to sizes only and must not be solely relied on for critical design information.

## Universal Joints - Single Joint - High Speed - Plain Bore - Stainless

Part Number	OD (D) mm	Bore (d) mm	Length (L) mm	Type	Body Material	Bore Depth (C) mm	Maximum Inline Speed RPM	Max Operating Angle Deg.	Max Inline Torque N.m	Other Information
	<i>inches</i>	<i>inches</i>	<i>inches</i>			<i>inches</i>				
# UJS-072-050-035-HS34	7.15	5.00	34.90	Single	303 / 440 Stainless	11.10	4000	30	0.44	Zero Backlash
	<i>0.281</i>	<i>0.197</i>	<i>1.374</i>			<i>0.437</i>				
# UJS-080-040-038-HS3	8.00	4.00	38.00	Single	303 Stainless Steel	12.50	1750	25	12.54	
	<i>0.315</i>	<i>0.157</i>	<i>1.496</i>			<i>0.492</i>				
# UJS-090-050-044-HS3	9.00	5.00	44.00	Single	303 Stainless Steel	15.00	1750	25	21.07	
	<i>0.354</i>	<i>0.197</i>	<i>1.732</i>			<i>0.591</i>				
# UJS-095-050-045-HS34	9.53	5.00	44.50	Single	303 / 440 Stainless	12.70	4000	30	1.76	Zero Backlash
	<i>0.375</i>	<i>0.197</i>	<i>1.752</i>			<i>0.500</i>				
UJS-095-060-045-HS34	9.53	6.00	44.50	Single	303 / 440 Stainless	12.70	4000	30	1.76	Zero Backlash
	<i>0.375</i>	<i>0.236</i>	<i>1.752</i>			<i>0.500</i>				
UJS-095-064-044-HS34	9.53	6.35	44.45	Single	303 / 440 Stainless	12.70	4000	30	1.81	Zero Backlash
	<i>0.375</i>	<i>0.250</i>	<i>1.750</i>			<i>0.500</i>				
# UJS-125-000-040-HS3	12.50	Solid	40.00	Single	303 Stainless Steel	N/A	1750	25	12.74	
	<i>0.492</i>		<i>1.575</i>							
UJS-125-060-040-HS3	12.50	6.00	40.00	Single	303 Stainless Steel	13.00	1750	25	12.74	
	<i>0.492</i>	<i>0.236</i>	<i>1.575</i>			<i>0.512</i>				

# Indicates item not stocked at time of printing - Please enquire for lead time

E&OE Pricing and all details subject to change without notice - Copyright Miniature Bearings Australia Pty Ltd

MBA Size Listings are a guide to sizes only and must not be solely relied on for critical design information.

## Universal Joints - Single Joint - High Speed - Plain Bore - Stainless

Part Number	OD (D) mm	Bore (d) mm	Length (L) mm	Type	Body Material	Bore Depth (C) mm	Maximum Inline Speed RPM	Max Operating Angle Deg.	Max Inline Torque N.m	Other Information
# UJS-127-000-040-HS3	12.70 <i>0.500</i>	Solid <i>0.187</i>	40.13 <i>1.580</i>	Single	303 Stainless Steel	N/A	1750	25	12.76	
# UJS-127-048-040-HS3	12.70 <i>0.500</i>	4.76 <i>0.187</i>	40.13 <i>1.580</i>	Single	303 Stainless Steel	13.11 <i>0.516</i>	1750	25	12.76	
# UJS-127-064-050-HS3	12.70 <i>0.500</i>	6.35 <i>0.250</i>	49.78 <i>1.960</i>	Single	303 Stainless Steel	16.66 <i>0.656</i>	1750	25	24.50	
# UJS-159-000-050-HS3	15.88 <i>0.625</i>	Solid <i>0.313</i>	49.78 <i>1.960</i>	Single	303 Stainless Steel	N/A	1750	25	24.50	
# UJS-159-079-050-HS3	15.88 <i>0.625</i>	7.94 <i>0.313</i>	49.78 <i>1.960</i>	Single	303 Stainless Steel	16.66 <i>0.656</i>	1750	25	24.50	
# UJS-160-000-050-HS3	16.00 <i>0.630</i>	Solid <i>0.315</i>	50.00 <i>1.969</i>	Single	303 Stainless Steel	N/A	1750	25	24.50	
# UJS-160-080-050-HS3	16.00 <i>0.630</i>	8.00 <i>0.315</i>	50.00 <i>1.969</i>	Single	303 Stainless Steel	16.50 <i>0.650</i>	1750	30	24.50	
# UJS-198-000-056-HS3	19.84 <i>0.781</i>	Solid <i>0.315</i>	55.88 <i>2.200</i>	Single	303 Stainless Steel	N/A	1750	25	49.00	

# Indicates item not stocked at time of printing - Please enquire for lead time

E&OE Pricing and all details subject to change without notice - Copyright Miniature Bearings Australia Pty Ltd  
MBA Size Listings are a guide to sizes only and must not be solely relied on for critical design information.

## Universal Joints - Single Joint - High Speed - Plain Bore - Stainless

Part Number	OD (D) mm	Bore (d) mm	Length (L) mm	Type	Body Material	Bore Depth (C) mm	Maximum Inline Speed RPM	Max Operating Angle Deg.	Max Inline Torque N.m	Other Information
# UJS-198-095-056-HS3	19.84 <i>0.781</i>	9.53 <i>0.375</i>	55.88 <i>2.200</i>	Single	303 Stainless Steel	17.07 <i>0.672</i>	1750	25	49.00	
# UJS-198-111-071-HS3	19.84 <i>0.781</i>	11.11 <i>0.437</i>	71.12 <i>2.800</i>	Single	303 Stainless Steel	21.82 <i>0.859</i>	1750	25	78.35	
# UJS-200-000-056-HS3	20.00 <i>0.787</i>	Solid	56.00 <i>2.205</i>	Single	303 Stainless Steel	N/A	1750	25	44.10	
# UJS-200-100-056-HS3	20.00 <i>0.787</i>	10.00 <i>0.394</i>	56.00 <i>2.205</i>	Single	303 Stainless Steel	17.00 <i>0.669</i>	1750	25	44.10	
# UJS-250-127-071-HS3	24.99 <i>0.984</i>	12.70 <i>0.500</i>	71.12 <i>2.800</i>	Single	303 Stainless Steel	21.82 <i>0.859</i>	1750	25	78.35	
# UJS-250-000-071-HS3	25.00 <i>0.984</i>	Solid	71.00 <i>2.795</i>	Single	303 Stainless Steel	N/A	1750	25	77.42	
# UJS-250-120-071-HS3	25.00 <i>0.984</i>	12.00 <i>0.472</i>	71.00 <i>2.795</i>	Single	303 Stainless Steel	22.00 <i>0.866</i>	1750	25	77.42	

# Indicates item not stocked at time of printing - Please enquire for lead time

E&OE Pricing and all details subject to change without notice - Copyright Miniature Bearings Australia Pty Ltd

MBA Size Listings are a guide to sizes only and must not be solely relied on for critical design information.

DISTRIBUTED BY

Distributed By:

