



Universal Joints - Single Joint - High Speed - Plain Bore

10/4/2018

Indicates item not stocked at time of printing - Please enquire for lead time

E&OE Pricing and all details subject to change without notice - Copyright Miniature Bearings Australia Pty Ltd

MBA Size Listings are a guide to sizes only and must not be solely relied on for critical design information.

INFORMATION

Carbon Steel. Maximum operating angle 25 to 45 degrees (refer tables).

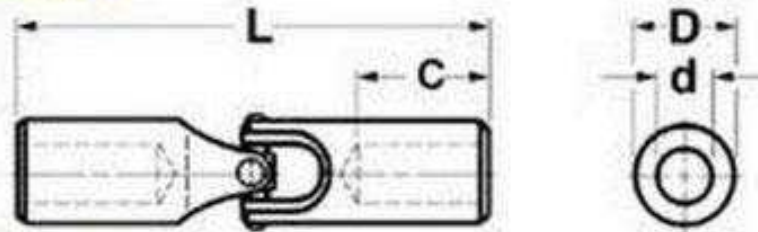
<http://www.minibearings.com.au/categories/covers/all/pics/>

Indicates item not stocked at time of printing - Please enquire for lead time

E&OE Pricing and all details subject to change without notice - Copyright Miniature Bearings Australia Pty Ltd

MBA Size Listings are a guide to sizes only and must not be solely relied on for critical design information.

Single



Indicates item not stocked at time of printing - Please enquire for lead time

E&OE Pricing and all details subject to change without notice - Copyright Miniature Bearings Australia Pty Ltd

MBA Size Listings are a guide to sizes only and must not be solely relied on for critical design information.

Universal Joints - Single Joint - High Speed - Plain Bore

Part Number	OD (D) mm	Bore (d) mm	Length (L) mm	Type	Body Material	Bore Depth (C) mm	Maximum Inline Speed RPM	Max Operating Angle Deg.	Static Breaking Torque N.m	Other Information
	<i>inches</i>	<i>inches</i>	<i>inches</i>			<i>inches</i>				
# UJS-095-040-044-HC	9.50	4.00	44.40	Single	Alloy Steel	14.00	1750	25 (45 Deg for Hand Operated)	11.76	
	<i>0.374</i>	<i>0.157</i>	<i>1.748</i>			<i>0.551</i>				
# UJS-095-060-044-HC	9.50	6.00	44.40	Single	Alloy Steel	14.00	1750	25 (45 Deg for Hand Operated)	11.76	
	<i>0.374</i>	<i>0.236</i>	<i>1.748</i>			<i>0.551</i>				
# UJS-095-048-044-HC	9.53	4.76	44.45	Single	Alloy Steel	14.30	1750	25 (45 Deg for Hand Operated)	12.43	
	<i>0.375</i>	<i>0.187</i>	<i>1.750</i>			<i>0.563</i>				
# UJS-095-064-044-HC	9.53	6.35	44.45	Single	Alloy Steel	14.30	1750	25 (45 Deg for Hand Operated)	12.43	
	<i>0.375</i>	<i>0.250</i>	<i>1.750</i>			<i>0.563</i>				
# UJS-119-048-050-HC	11.91	4.76	50.00	Single	Alloy Steel	16.28	1750	25	Not Rated	
	<i>0.469</i>	<i>0.187</i>	<i>1.969</i>			<i>0.641</i>				
# UJS-119-064-050-HC	11.91	6.35	50.00	Single	Alloy Steel	16.28	1750	25	Not Rated	
	<i>0.469</i>	<i>0.250</i>	<i>1.969</i>			<i>0.641</i>				
UJS-120-060-050-HC	12.00	6.00	50.00	Single	Alloy Steel	16.50	1750	25	Not Rated	
	<i>0.472</i>	<i>0.236</i>	<i>1.969</i>			<i>0.650</i>				
# UJS-127-060-051-HC	12.70	6.00	50.80	Single	Alloy Steel	16.00	1750	25 (45 Deg for Hand Operated)	42.14	
	<i>0.500</i>	<i>0.236</i>	<i>2.000</i>			<i>0.630</i>				

Indicates item not stocked at time of printing - Please enquire for lead time

E&OE Pricing and all details subject to change without notice - Copyright Miniature Bearings Australia Pty Ltd

MBA Size Listings are a guide to sizes only and must not be solely relied on for critical design information.

Universal Joints - Single Joint - High Speed - Plain Bore

Part Number	OD (D) mm	Bore (d) mm	Length (L) mm	Type	Body Material	Bore Depth (C) mm	Maximum Inline Speed RPM	Max Operating Angle Deg.	Static Breaking Torque N.m	Other Information
	<i>inches</i>	<i>inches</i>	<i>inches</i>			<i>inches</i>				
UJS-127-064-051-HC	12.70	6.35	50.80	Single	Alloy Steel	15.88	1750	25 (45 Deg for Hand Operated)	42.67	
	<i>0.500</i>	<i>0.250</i>	<i>2.000</i>			<i>0.625</i>				
# UJS-127-079-051-HC	12.70	7.94	50.80	Single	Alloy Steel	15.88	1750	25 (45 Deg for Hand Operated)	42.67	
	<i>0.500</i>	<i>0.313</i>	<i>2.000</i>			<i>0.625</i>				
# UJS-127-080-051-HC	12.70	8.00	50.80	Single	Alloy Steel	16.00	1750	25 (45 Deg for Hand Operated)	42.14	
	<i>0.500</i>	<i>0.315</i>	<i>2.000</i>			<i>0.630</i>				
# UJS-127-095-051-HC	12.70	9.53	50.80	Single	Alloy Steel	15.88	1750	25 (45 Deg for Hand Operated)	42.67	
	<i>0.500</i>	<i>0.375</i>	<i>2.000</i>			<i>0.625</i>				
# UJS-127-100-051-HC	12.70	10.00	50.80	Single	Alloy Steel	16.00	1750	25 (45 Deg for Hand Operated)	42.14	
	<i>0.500</i>	<i>0.394</i>	<i>2.000</i>			<i>0.630</i>				
# UJS-159-079-056-HC	15.88	7.94	55.96	Single	Alloy Steel	17.48	1750	25	Not Rated	
	<i>0.625</i>	<i>0.313</i>	<i>2.203</i>			<i>0.688</i>				
# UJS-159-079-057-HC	15.88	7.94	57.15	Single	Alloy Steel	17.48	1750	25 (45 Deg for Hand Operated)	60.96	
	<i>0.625</i>	<i>0.313</i>	<i>2.250</i>			<i>0.688</i>				

Indicates item not stocked at time of printing - Please enquire for lead time

Page 5 of 9

E&OE Pricing and all details subject to change without notice - Copyright Miniature Bearings Australia Pty Ltd
MBA Size Listings are a guide to sizes only and must not be solely relied on for critical design information.

Universal Joints - Single Joint - High Speed - Plain Bore

Part Number	OD (D) mm	Bore (d) mm	Length (L) mm	Type	Body Material	Bore Depth (C) mm	Maximum Inline Speed RPM	Max Operating Angle Deg.	Static Breaking Torque N.m	Other Information
	<i>inches</i>	<i>inches</i>	<i>inches</i>			<i>inches</i>				
# UJS-159-080-057-HC	15.88	8.00	57.15	Single	Alloy Steel	16.00	1750	25 (45 Deg for Hand Operated)	42.14	
	<i>0.625</i>	<i>0.315</i>	<i>2.250</i>			<i>0.630</i>				
# UJS-159-095-057-HC	15.88	9.53	57.15	Single	Alloy Steel	17.48	1750	25 (45 Deg for Hand Operated)	60.96	
	<i>0.625</i>	<i>0.375</i>	<i>2.250</i>			<i>0.688</i>				
UJS-159-100-057-HC	15.88	10.00	57.15	Single	Alloy Steel	17.00	1750	25 (45 Deg for Hand Operated)	59.78	
	<i>0.625</i>	<i>0.394</i>	<i>2.250</i>			<i>0.669</i>				
# UJS-159-111-057-HC	15.88	11.11	57.15	Single	Alloy Steel	17.48	1750	25 (45 Deg for Hand Operated)	60.96	
	<i>0.625</i>	<i>0.437</i>	<i>2.250</i>			<i>0.688</i>				
# UJS-159-120-057-HC	15.88	12.00	57.15	Single	Alloy Steel	17.00	1750	25 (45 Deg for Hand Operated)	59.78	
	<i>0.625</i>	<i>0.472</i>	<i>2.250</i>			<i>0.669</i>				
# UJS-159-127-057-HC	15.88	12.70	57.15	Single	Alloy Steel	17.48	1750	25 (45 Deg for Hand Operated)	60.96	
	<i>0.625</i>	<i>0.500</i>	<i>2.250</i>			<i>0.688</i>				
UJS-159-140-057-HC	15.88	14.00	57.15	Single	Alloy Steel	17.00	1750	25 (45 Deg for Hand Operated)	59.78	
	<i>0.625</i>	<i>0.551</i>	<i>2.250</i>			<i>0.669</i>				

Indicates item not stocked at time of printing - Please enquire for lead time

Page 6 of 9

E&OE Pricing and all details subject to change without notice - Copyright Miniature Bearings Australia Pty Ltd
MBA Size Listings are a guide to sizes only and must not be solely relied on for critical design information.

Universal Joints - Single Joint - High Speed - Plain Bore

Part Number	OD (D) mm	Bore (d) mm	Length (L) mm	Type	Body Material	Bore Depth (C) mm	Maximum Inline Speed RPM	Max Operating Angle Deg.	Static Breaking Torque N.m	Other Information
	<i>inches</i>	<i>inches</i>	<i>inches</i>			<i>inches</i>				
# UJS-160-080-056-HC	16.00 <i>0.630</i>	8.00 <i>0.315</i>	56.00 <i>2.205</i>	Single	Alloy Steel	17.50 <i>0.689</i>	1750	25	Not Rated	
# UJS-191-095-068-HC	19.05 <i>0.750</i>	9.53 <i>0.375</i>	68.26 <i>2.687</i>	Single	Carbon Steel	22.225 <i>0.875</i>	1750	25	86.77	
# UJS-191-100-068-HC	19.05 <i>0.750</i>	10.00 <i>0.394</i>	68.26 <i>2.687</i>	Single	Alloy Steel	17.00 <i>0.669</i>	1750	25 (45 Deg for Hand Operated)	85.26	
# UJS-191-111-068-HC	19.05 <i>0.750</i>	11.11 <i>0.437</i>	68.26 <i>2.687</i>	Single	Alloy Steel	22.23 <i>0.875</i>	1750	25 (45 Deg for Hand Operated)	86.70	
# UJS-191-120-068-HC	19.05 <i>0.750</i>	12.00 <i>0.472</i>	68.26 <i>2.687</i>	Single	Alloy Steel	22.00 <i>0.866</i>	1750	25 (45 Deg for Hand Operated)	85.26	
# UJS-191-127-068-HC	19.05 <i>0.750</i>	12.70 <i>0.500</i>	68.26 <i>2.687</i>	Single	Alloy Steel	22.23 <i>0.875</i>	1750	25 (45 Deg for Hand Operated)	86.70	
# UJS-191-140-068-HC	19.05 <i>0.750</i>	14.00 <i>0.551</i>	68.26 <i>2.687</i>	Single	Alloy Steel	22.00 <i>0.866</i>	1750	25 (45 Deg for Hand Operated)	85.26	
# UJS-198-095-068-HC	19.84 <i>0.781</i>	9.53 <i>0.375</i>	67.87 <i>2.672</i>	Single	Alloy Steel	21.44 <i>0.844</i>	1750	25	Not Rated	

Indicates item not stocked at time of printing - Please enquire for lead time

E&OE Pricing and all details subject to change without notice - Copyright Miniature Bearings Australia Pty Ltd

MBA Size Listings are a guide to sizes only and must not be solely relied on for critical design information.

Universal Joints - Single Joint - High Speed - Plain Bore

Part Number	OD (D) mm	Bore (d) mm	Length (L) mm	Type	Body Material	Bore Depth (C) mm	Maximum Inline Speed RPM	Max Operating Angle Deg.	Static Breaking Torque N.m	Other Information
	<i>inches</i>	<i>inches</i>	<i>inches</i>			<i>inches</i>				
# UJS-198-111-068-HC	19.84 <i>0.781</i>	11.11 <i>0.437</i>	67.87 <i>2.672</i>	Single	Alloy Steel	21.44 <i>0.844</i>	1750	25	Not Rated	
# UJS-200-100-068-HC	20.00 <i>0.787</i>	10.00 <i>0.394</i>	68.00 <i>2.677</i>	Single	Alloy Steel	21.50 <i>0.846</i>	1750	25	Not Rated	
UJS-222-120-076-HC	22.20 <i>0.874</i>	12.00 <i>0.472</i>	76.20 <i>3.000</i>	Single	Alloy Steel	22.00 <i>0.866</i>	1750	25 (45 Deg for Hand Operated)	130.34	
# UJS-222-140-076-HC	22.20 <i>0.874</i>	14.00 <i>0.551</i>	76.20 <i>3.000</i>	Single	Alloy Steel	22.00 <i>0.866</i>	1750	25 (45 Deg for Hand Operated)	130.34	
# UJS-222-111-076-HC	22.23 <i>0.875</i>	11.11 <i>0.437</i>	76.20 <i>3.000</i>	Single	Alloy Steel	22.23 <i>0.875</i>	1750	25 (45 Deg for Hand Operated)	132.77	
# UJS-222-127-076-HC	22.23 <i>0.875</i>	12.70 <i>0.500</i>	76.20 <i>3.000</i>	Single	Alloy Steel	22.23 <i>0.875</i>	1750	25 (45 Deg for Hand Operated)	132.77	
# UJS-238-127-084-HC	23.83 <i>0.938</i>	12.70 <i>0.500</i>	84.14 <i>3.313</i>	Single	Alloy Steel	27.00 <i>1.063</i>	1750	25	Not Rated	
# UJS-240-120-084-HC	24.00 <i>0.945</i>	12.00 <i>0.472</i>	84.00 <i>3.307</i>	Double	Alloy Steel	27.00 <i>1.063</i>	1750	25	Not Rated	

Indicates item not stocked at time of printing - Please enquire for lead time

E&OE Pricing and all details subject to change without notice - Copyright Miniature Bearings Australia Pty Ltd

MBA Size Listings are a guide to sizes only and must not be solely relied on for critical design information.

Universal Joints - Single Joint - High Speed - Plain Bore

Part Number	OD (D) mm	Bore (d) mm	Length (L) mm	Type	Body Material	Bore Depth (C) mm	Maximum Inline Speed RPM	Max Operating Angle Deg.	Static Breaking Torque N.m	Other Information
	<i>inches</i>	<i>inches</i>	<i>inches</i>			<i>inches</i>				
# UJS-254-127-086-HC	25.400 <i>1.000</i>	12.70 <i>0.500</i>	85.725 <i>3.375</i>	Single	Carbon Steel	25.400 <i>1.000</i>	1750	25	176.26	
# UJS-318-159-095-HC	31.750 <i>1.250</i>	15.88 <i>0.625</i>	95.250 <i>3.750</i>	Single	Carbon Steel	26.988 <i>1.063</i>	1750	25	587.52	
# UJS-381-191-108-HC	38.100 <i>1.500</i>	19.05 <i>0.750</i>	107.950 <i>4.250</i>	Single	Carbon Steel	30.163 <i>1.188</i>	1750	25	894.84	
# UJS-508-254-138-HC	50.800 <i>2.000</i>	25.40 <i>1.000</i>	138.113 <i>5.438</i>	Single	Carbon Steel	38.100 <i>1.500</i>	1750	25	1762.56	

Indicates item not stocked at time of printing - Please enquire for lead time

E&OE Pricing and all details subject to change without notice - Copyright Miniature Bearings Australia Pty Ltd

MBA Size Listings are a guide to sizes only and must not be solely relied on for critical design information.

DISTRIBUTED BY

Distributed By:

