



Washers - C - 303 Stainless Steel

10/4/2018

Indicates item not stocked at time of printing - Please enquire for lead time

E&OE Pricing and all details subject to change without notice - Copyright Miniature Bearings Australia Pty Ltd

MBA Size Listings are a guide to sizes only and must not be solely relied on for critical design information.

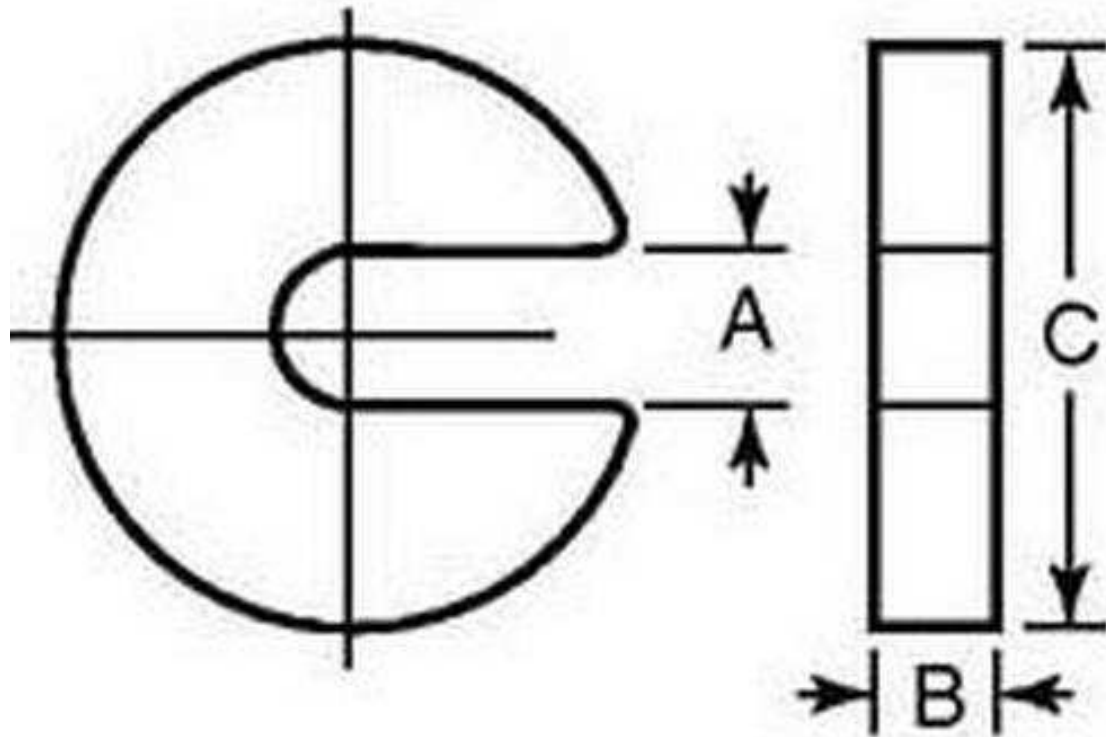
INFORMATION

Knurled outside edge

Indicates item not stocked at time of printing - Please enquire for lead time

E&OE Pricing and all details subject to change without notice - Copyright Miniature Bearings Australia Pty Ltd

MBA Size Listings are a guide to sizes only and must not be solely relied on for critical design information.



Indicates item not stocked at time of printing - Please enquire for lead time

E&OE Pricing and all details subject to change without notice - Copyright Miniature Bearings Australia Pty Ltd

MBA Size Listings are a guide to sizes only and must not be solely relied on for critical design information.

Washers - C - 303 Stainless Steel

Part Number	Groove Width (A) mm	Outside Diameter (C) mm	Width (B) mm
	<i>inches</i>	<i>inches</i>	<i>inches</i>
# W0044-C-3	4.37 <i>0.172</i>	15.88 <i>0.625</i>	4.76 <i>0.187</i>
# W0052-C-3	5.16 <i>0.203</i>	19.05 <i>0.750</i>	4.76 <i>0.187</i>
# W0067-C-3	6.75 <i>0.266</i>	22.23 <i>0.875</i>	4.76 <i>0.187</i>
# W0083-C-3	8.33 <i>0.328</i>	25.40 <i>1.000</i>	6.35 <i>0.250</i>
# W0099-C-3	9.92 <i>0.391</i>	31.75 <i>1.250</i>	11.11 <i>0.437</i>

Indicates item not stocked at time of printing - Please enquire for lead time

E&OE Pricing and all details subject to change without notice - Copyright Miniature Bearings Australia Pty Ltd
MBA Size Listings are a guide to sizes only and must not be solely relied on for critical design information.

DISTRIBUTED BY

Distributed By:

