



Washers - C - Steel

10/4/2018

Indicates item not stocked at time of printing - Please enquire for lead time

E&OE Pricing and all details subject to change without notice - Copyright Miniature Bearings Australia Pty Ltd

MBA Size Listings are a guide to sizes only and must not be solely relied on for critical design information.

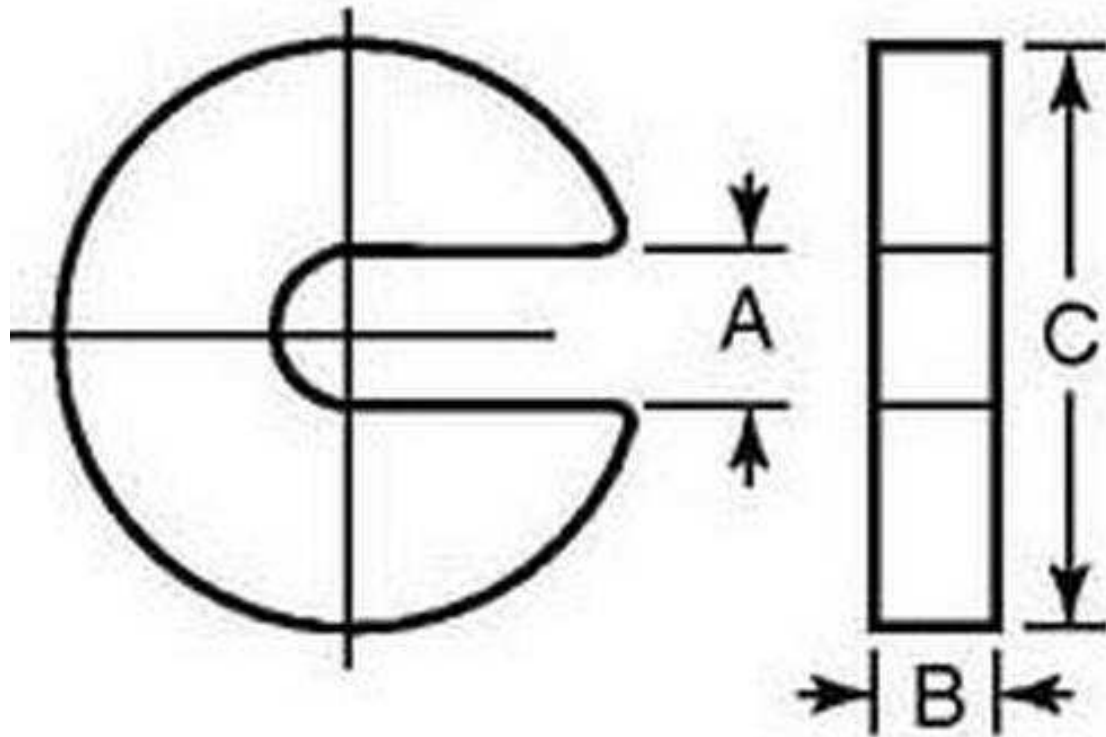
INFORMATION

Cold finished steel, case hardened with a black oxide finish.

Indicates item not stocked at time of printing - Please enquire for lead time

E&OE Pricing and all details subject to change without notice - Copyright Miniature Bearings Australia Pty Ltd

MBA Size Listings are a guide to sizes only and must not be solely relied on for critical design information.



Indicates item not stocked at time of printing - Please enquire for lead time

E&OE Pricing and all details subject to change without notice - Copyright Miniature Bearings Australia Pty Ltd

MBA Size Listings are a guide to sizes only and must not be solely relied on for critical design information.

Washers - C - Steel

Part Number	Groove Width (A) mm	Outside Diameter (C) mm	Width (B) mm
	<i>inches</i>	<i>inches</i>	<i>inches</i>
# W0071-C-C	7.14 <i>0.281</i>	31.75 <i>1.250</i>	6.35 <i>0.250</i>
# W0087-C-C	8.73 <i>0.344</i>	31.75 <i>1.250</i>	7.94 <i>0.313</i>
# W0103-C-C	10.32 <i>0.406</i>	38.10 <i>1.500</i>	9.53 <i>0.375</i>
# W0135-C-C	13.49 <i>0.531</i>	50.80 <i>2.000</i>	9.53 <i>0.375</i>
# W0167-C-C	16.67 <i>0.656</i>	50.93 <i>2.005</i>	9.53 <i>0.375</i>
# W0198-C-C	19.84 <i>0.781</i>	63.50 <i>2.500</i>	11.11 <i>0.437</i>
# W0230-C-C	23.02 <i>0.906</i>	51.43 <i>2.025</i>	12.70 <i>0.500</i>

Indicates item not stocked at time of printing - Please enquire for lead time

E&OE Pricing and all details subject to change without notice - Copyright Miniature Bearings Australia Pty Ltd
MBA Size Listings are a guide to sizes only and must not be solely relied on for critical design information.

DISTRIBUTED BY

Distributed By:

