



Washers - Cup - Brass - Nickel Plated

10/4/2018

Indicates item not stocked at time of printing - Please enquire for lead time

E&OE Pricing and all details subject to change without notice - Copyright Miniature Bearings Australia Pty Ltd

MBA Size Listings are a guide to sizes only and must not be solely relied on for critical design information.

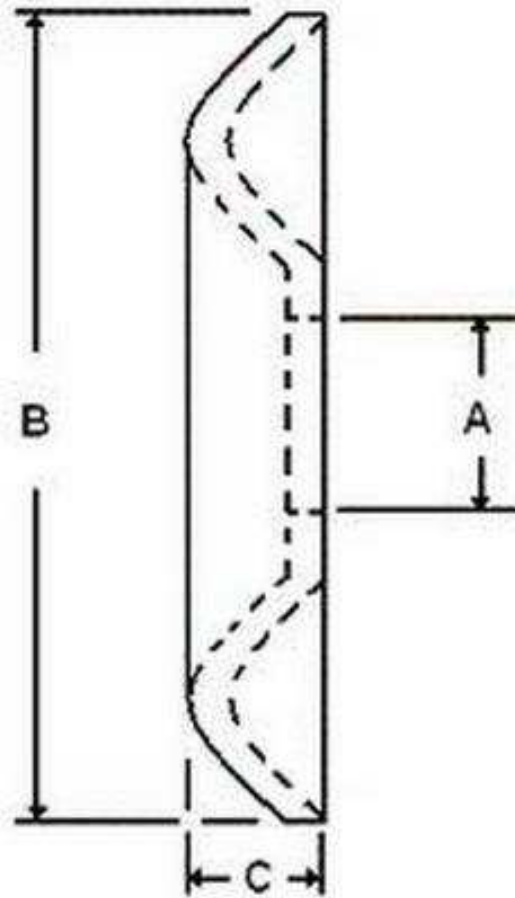
INFORMATION

For countersunk screws.

Indicates item not stocked at time of printing - Please enquire for lead time

E&OE Pricing and all details subject to change without notice - Copyright Miniature Bearings Australia Pty Ltd

MBA Size Listings are a guide to sizes only and must not be solely relied on for critical design information.



Indicates item not stocked at time of printing - Please enquire for lead time

E&OE Pricing and all details subject to change without notice - Copyright Miniature Bearings Australia Pty Ltd

MBA Size Listings are a guide to sizes only and must not be solely relied on for critical design information.

Washers - Cup - Brass - Nickel Plated

Part Number	Nom. ID (A) mm <i>inches</i>	Nom. OD (B) mm <i>inches</i>	Nom. Section (C) mm <i>inches</i>	Size
# W0028-CU-010-021-BNP	2.845 <i>0.112</i>	9.50 <i>0.374</i>	2.10 <i>0.083</i>	4 UNC / UNF
# W0035-CU-010-024-BNP	3.5 <i>0.138</i>	10.30 <i>0.406</i>	2.40 <i>0.094</i>	6 UNC / UNF
# W0048-CU-013-024-BNP	4.762 <i>0.187</i>	12.70 <i>0.500</i>	2.40 <i>0.094</i>	10 UNC / UNF
# W0050-CU-014-028-BNP	5 <i>0.197</i>	14.30 <i>0.563</i>	2.80 <i>0.110</i>	M5
# W0060-CU-015-028-BNP	6 <i>0.236</i>	15.10 <i>0.594</i>	2.80 <i>0.110</i>	M6

Indicates item not stocked at time of printing - Please enquire for lead time

E&OE Pricing and all details subject to change without notice - Copyright Miniature Bearings Australia Pty Ltd

MBA Size Listings are a guide to sizes only and must not be solely relied on for critical design information.

DISTRIBUTED BY

Distributed By:

