



Washers - Disc Spring - Carbon Steel

10/4/2018

Indicates item not stocked at time of printing - Please enquire for lead time

E&OE Pricing and all details subject to change without notice - Copyright Miniature Bearings Australia Pty Ltd

MBA Size Listings are a guide to sizes only and must not be solely relied on for critical design information.

INFORMATION

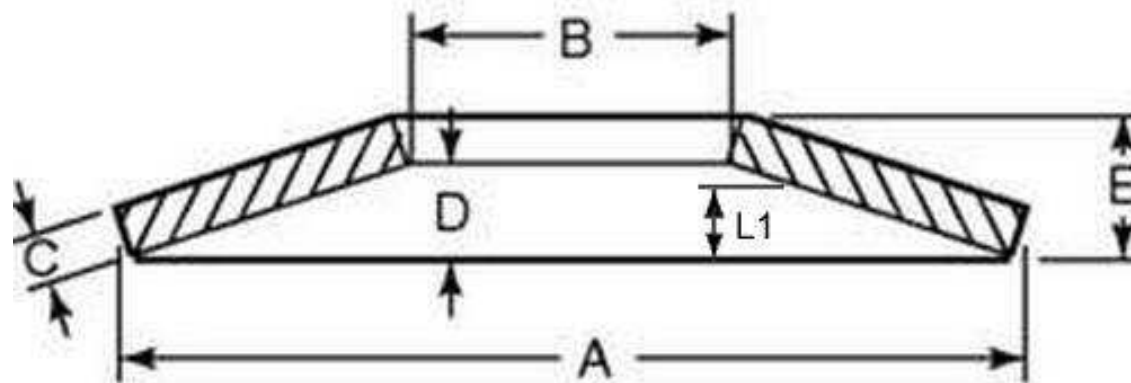
Also known as belleville washers.

Manufactured under strict quality control to conform to DIN 2093

Indicates item not stocked at time of printing - Please enquire for lead time

E&OE Pricing and all details subject to change without notice - Copyright Miniature Bearings Australia Pty Ltd

MBA Size Listings are a guide to sizes only and must not be solely relied on for critical design information.



Indicates item not stocked at time of printing - Please enquire for lead time

E&OE Pricing and all details subject to change without notice - Copyright Miniature Bearings Australia Pty Ltd

MBA Size Listings are a guide to sizes only and must not be solely relied on for critical design information.

Washers - Disc Spring - Carbon Steel

Part Number	Nominal ID (B) mm	Nominal OD (A) mm	Stock Thickness (C) mm	Load to flatten kg	Loaded Height (L1) mm	Load at L1 kg	Material	Type	Load at 0.75 Height Kg	Free Height (E) mm
	<i>inches</i>	<i>inches</i>	<i>inches</i>		<i>inches</i>					<i>inches</i>
# W0024-D-005-003-C	2.38	4.75	0.25	12.41	0.30	6.8	AISI C1095 Spring Steel	Disc Spring Washer		0.38
	<i>0.094</i>	<i>0.187</i>	<i>0.010</i>		<i>0.012</i>					<i>0.015</i>
# W0030-D-008-003-C	3	8	0.30	-	0.36	10	Carbon Steel	Disc Spring Washer		0.55
	<i>0.118</i>	<i>0.315</i>	<i>0.012</i>		<i>0.014</i>					<i>0.022</i>
W0030-D-008-004-C	3	8	0.40	-	0.45	19	Carbon Steel	Disc Spring Washer		0.60
	<i>0.118</i>	<i>0.315</i>	<i>0.016</i>		<i>0.018</i>					<i>0.024</i>
# W0030-D-008-005-C	3	8	0.50	-	0.55	36	Carbon Steel	Disc Spring Washer		0.70
	<i>0.118</i>	<i>0.315</i>	<i>0.020</i>		<i>0.022</i>					<i>0.028</i>
W0030-D-010-003-C	3	10	0.30	-	0.39	10	Carbon Steel	Disc Spring Washer		0.65
	<i>0.118</i>	<i>0.394</i>	<i>0.012</i>		<i>0.015</i>					<i>0.026</i>
# W0030-D-010-004-C	3	10	0.40	-	0.48	18	Carbon Steel	Disc Spring Washer		0.70
	<i>0.118</i>	<i>0.394</i>	<i>0.016</i>		<i>0.019</i>					<i>0.028</i>
# W0030-D-010-005-C	3	10	0.50	-	0.56	28	Carbon Steel	Disc Spring Washer		0.75
	<i>0.118</i>	<i>0.394</i>	<i>0.020</i>		<i>0.022</i>					<i>0.030</i>
W0032-D-006-003-C	3.2	6.35	0.34	21.43	0.43	11.7	AISI C1095 Spring Steel	Disc Spring Washer		0.51
	<i>0.126</i>	<i>0.250</i>	<i>0.013</i>		<i>0.017</i>					<i>0.020</i>

Indicates item not stocked at time of printing - Please enquire for lead time

Page 4 of 35

E&OE Pricing and all details subject to change without notice - Copyright Miniature Bearings Australia Pty Ltd

MBA Size Listings are a guide to sizes only and must not be solely relied on for critical design information.

Washers - Disc Spring - Carbon Steel

Part Number	Nominal ID (B) mm	Nominal OD (A) mm	Stock Thickness (C) mm	Load to flatten kg	Loaded Height (L1) mm	Load at L1 kg	Material	Type	Load at 0.75 Height Kg	Free Height (E) mm
	<i>inches</i>	<i>inches</i>	<i>inches</i>		<i>inches</i>					<i>inches</i>
W0040-D-008-002-C	4	8	0.20	-	0.26	4	Carbon Steel	Disc Spring Washer		0.45
	<i>0.157</i>	<i>0.315</i>	<i>0.008</i>		<i>0.010</i>					<i>0.018</i>
W0040-D-008-003-C	4	8	0.30	-	0.36	12	Carbon Steel	Disc Spring Washer		0.55
	<i>0.157</i>	<i>0.315</i>	<i>0.012</i>		<i>0.014</i>					<i>0.022</i>
W0040-D-008-004-C	4	8	0.40	-	0.45	21	Carbon Steel	Disc Spring Washer		0.60
	<i>0.157</i>	<i>0.315</i>	<i>0.016</i>		<i>0.018</i>					<i>0.024</i>
W0040-D-010-004-C	4	10	0.40	-	0.48	19	Carbon Steel	Disc Spring Washer		0.70
	<i>0.157</i>	<i>0.394</i>	<i>0.016</i>		<i>0.019</i>					<i>0.028</i>
W0040-D-010-005-C	4	10	0.50	-	0.56	29	Carbon Steel	Disc Spring Washer		0.75
	<i>0.157</i>	<i>0.394</i>	<i>0.020</i>		<i>0.022</i>					<i>0.030</i>
W0040-D-010-006-C	4	10	0.60	-	0.66	50	Carbon Steel	Disc Spring Washer		0.85
	<i>0.157</i>	<i>0.394</i>	<i>0.024</i>		<i>0.026</i>					<i>0.033</i>
# W0040-D-012-004-C	4	12	0.40	-	0.50	18	Carbon Steel	Disc Spring Washer		0.80
	<i>0.157</i>	<i>0.472</i>	<i>0.016</i>		<i>0.020</i>					<i>0.031</i>
# W0040-D-012-005-C	4	12	0.50	-	0.59	28	Carbon Steel	Disc Spring Washer		0.85
	<i>0.157</i>	<i>0.472</i>	<i>0.020</i>		<i>0.023</i>					<i>0.033</i>

Indicates item not stocked at time of printing - Please enquire for lead time

Page 5 of 35

E&OE Pricing and all details subject to change without notice - Copyright Miniature Bearings Australia Pty Ltd

MBA Size Listings are a guide to sizes only and must not be solely relied on for critical design information.

Washers - Disc Spring - Carbon Steel

Part Number	Nominal ID (B) mm	Nominal OD (A) mm	Stock Thickness (C) mm	Load to flatten kg	Loaded Height (L1) mm	Load at L1 kg	Material	Type	Load at 0.75 Height Kg	Free Height (E) mm
	<i>inches</i>	<i>inches</i>	<i>inches</i>		<i>inches</i>					<i>inches</i>
W0040-D-012-006-C	4	12	0.60	-	0.70	56	Carbon Steel	Disc Spring Washer		1.00
	<i>0.157</i>	<i>0.472</i>	<i>0.024</i>		<i>0.028</i>					<i>0.039</i>
# W0048-D-010-005-C	4.762	9.525	0.51	49.11	0.64	26.8	AISI C1095 Spring Steel	Disc Spring Washer		0.76
	<i>0.187</i>	<i>0.375</i>	<i>0.020</i>		<i>0.025</i>					<i>0.030</i>
W0050-D-010-003-C	5	10	0.25	-	0.33	6	Carbon Steel	Disc Spring Washer		0.55
	<i>0.197</i>	<i>0.394</i>	<i>0.010</i>		<i>0.013</i>					<i>0.022</i>
# W0050-D-010-004-C	5	10	0.40	-	0.48	21	Carbon Steel	Disc Spring Washer		0.70
	<i>0.197</i>	<i>0.394</i>	<i>0.016</i>		<i>0.019</i>					<i>0.028</i>
W0050-D-010-005-C	5	10	0.50	-	0.56	33	Carbon Steel	Disc Spring Washer		0.75
	<i>0.197</i>	<i>0.394</i>	<i>0.020</i>		<i>0.022</i>					<i>0.030</i>
# W0050-D-012-005-C	5	12	0.50	-	0.60	35	Carbon Steel	Disc Spring Washer		0.90
	<i>0.197</i>	<i>0.472</i>	<i>0.020</i>		<i>0.024</i>					<i>0.035</i>
# W0050-D-012-006-C	5	12	0.60	-	0.69	51	Carbon Steel	Disc Spring Washer		0.95
	<i>0.197</i>	<i>0.472</i>	<i>0.024</i>		<i>0.027</i>					<i>0.037</i>
# W0050-D-013-005-C	5	12.5	0.50	-	0.59	27	Carbon Steel	Disc Spring Washer		0.85
	<i>0.197</i>	<i>0.492</i>	<i>0.020</i>		<i>0.023</i>					<i>0.033</i>

Indicates item not stocked at time of printing - Please enquire for lead time

Page 6 of 35

E&OE Pricing and all details subject to change without notice - Copyright Miniature Bearings Australia Pty Ltd

MBA Size Listings are a guide to sizes only and must not be solely relied on for critical design information.

Washers - Disc Spring - Carbon Steel

Part Number	Nominal ID (B) mm	Nominal OD (A) mm	Stock Thickness (C) mm	Load to flatten kg	Loaded Height (L1) mm	Load at L1 kg	Material	Type	Load at 0.75 Height Kg	Free Height (E) mm
	<i>inches</i>	<i>inches</i>	<i>inches</i>		<i>inches</i>					<i>inches</i>
# W0050-D-015-004-C	5	15	0.40	-	0.54	18	Carbon Steel	Disc Spring Washer		0.95
	0.197	0.591	0.016		0.021					0.037
# W0050-D-015-005-C	5	15	0.50	-	0.63	28	Carbon Steel	Disc Spring Washer		1.00
	0.197	0.591	0.020		0.025					0.039
# W0050-D-015-006-C	5	15	0.60	-	0.71	41	Carbon Steel	Disc Spring Washer		1.05
	0.197	0.591	0.024		0.028					0.041
# W0050-D-015-007-C	5	15	0.70	-	0.80	56	Carbon Steel	Disc Spring Washer		1.10
	0.197	0.591	0.028		0.031					0.043
W0060-D-012-005-C	6	12	0.50	-	0.59	33	Carbon Steel	Disc Spring Washer		0.85
	0.236	0.472	0.020		0.023					0.033
# W0060-D-012-006-C	6	12	0.60	-	0.69	55	Carbon Steel	Disc Spring Washer		0.95
	0.236	0.472	0.024		0.027					0.037
W0060-D-013-004-C	6	12.5	0.35	-	0.46	15	Carbon Steel	Disc Spring Washer		0.80
	0.236	0.492	0.014		0.018					0.031
# W0060-D-013-005-C	6	12.5	0.50	-	0.59	29	Carbon Steel	Disc Spring Washer		0.85
	0.236	0.492	0.020		0.023					0.033

Indicates item not stocked at time of printing - Please enquire for lead time

Page 7 of 35

E&OE Pricing and all details subject to change without notice - Copyright Miniature Bearings Australia Pty Ltd

MBA Size Listings are a guide to sizes only and must not be solely relied on for critical design information.

Washers - Disc Spring - Carbon Steel

Part Number	Nominal ID (B) mm	Nominal OD (A) mm	Stock Thickness (C) mm	Load to flatten kg	Loaded Height (L1) mm	Load at L1 kg	Material	Type	Load at 0.75 Height Kg	Free Height (E) mm
	<i>inches</i>	<i>inches</i>	<i>inches</i>		<i>inches</i>					<i>inches</i>
W0060-D-013-007-C	6	12.5	0.70	-	0.78	66	Carbon Steel	Disc Spring Washer		1.00
	<i>0.236</i>	<i>0.492</i>	<i>0.028</i>		<i>0.031</i>					<i>0.039</i>
# W0060-D-015-005-C	6	15	0.50	-	0.63	29	Carbon Steel	Disc Spring Washer		1.00
	<i>0.236</i>	<i>0.591</i>	<i>0.020</i>		<i>0.025</i>					<i>0.039</i>
# W0060-D-015-006-C	6	15	0.60	-	0.71	42	Carbon Steel	Disc Spring Washer		1.05
	<i>0.236</i>	<i>0.591</i>	<i>0.024</i>		<i>0.028</i>					<i>0.041</i>
# W0060-D-015-007-C	6	15	0.70	-	0.80	58	Carbon Steel	Disc Spring Washer		1.10
	<i>0.236</i>	<i>0.591</i>	<i>0.028</i>		<i>0.031</i>					<i>0.043</i>
W0060-D-018-004-C	6	18	0.40	-	0.55	14	Carbon Steel	Disc Spring Washer		1.00
	<i>0.236</i>	<i>0.709</i>	<i>0.016</i>		<i>0.022</i>					<i>0.039</i>
# W0060-D-018-005-C	6	18	0.50	-	0.65	25	Carbon Steel	Disc Spring Washer		1.10
	<i>0.236</i>	<i>0.709</i>	<i>0.020</i>		<i>0.026</i>					<i>0.043</i>
W0060-D-018-006-C	6	18	0.60	-	0.75	40	Carbon Steel	Disc Spring Washer		1.20
	<i>0.236</i>	<i>0.709</i>	<i>0.024</i>		<i>0.030</i>					<i>0.047</i>
# W0060-D-018-007-C	6	18	0.70	-	0.84	55	Carbon Steel	Disc Spring Washer		1.25
	<i>0.236</i>	<i>0.709</i>	<i>0.028</i>		<i>0.033</i>					<i>0.049</i>

Indicates item not stocked at time of printing - Please enquire for lead time

Page 8 of 35

E&OE Pricing and all details subject to change without notice - Copyright Miniature Bearings Australia Pty Ltd

MBA Size Listings are a guide to sizes only and must not be solely relied on for critical design information.

Washers - Disc Spring - Carbon Steel

Part Number	Nominal ID (B) mm	Nominal OD (A) mm	Stock Thickness (C) mm	Load to flatten kg	Loaded Height (L1) mm	Load at L1 kg	Material	Type	Load at 0.75 Height Kg	Free Height (E) mm
	<i>inches</i>	<i>inches</i>	<i>inches</i>		<i>inches</i>					<i>inches</i>
# W0060-D-018-008-C	6	18	0.80	-	0.92	73	Carbon Steel	Disc Spring Washer		1.30
	<i>0.236</i>	<i>0.709</i>	<i>0.031</i>		<i>0.036</i>					<i>0.051</i>
# W0065-D-013-006-C	6.5	12.7	0.64	71.43	0.79	42.4	AISI C1095 Spring Steel	Disc Spring Washer		0.97
	<i>0.256</i>	<i>0.500</i>	<i>0.025</i>		<i>0.031</i>					<i>0.038</i>
# W0070-D-014-004-C	7	14	0.35	-	0.46	12	Carbon Steel	Disc Spring Washer		0.80
	<i>0.276</i>	<i>0.551</i>	<i>0.014</i>		<i>0.018</i>					<i>0.031</i>
# W0070-D-014-005-C	7	14	0.50	-	0.60	28	Carbon Steel	Disc Spring Washer		0.90
	<i>0.276</i>	<i>0.551</i>	<i>0.020</i>		<i>0.024</i>					<i>0.035</i>
# W0070-D-014-008-C	7	14	0.80	-	0.87	80	Carbon Steel	Disc Spring Washer		1.10
	<i>0.276</i>	<i>0.551</i>	<i>0.031</i>		<i>0.034</i>					<i>0.043</i>
# W0079-D-016-008-C	7.938	15.875	0.81	116.07	1.02	64.7	AISI C1095 Spring Steel	Disc Spring Washer		1.22
	<i>0.313</i>	<i>0.625</i>	<i>0.032</i>		<i>0.040</i>					<i>0.048</i>
# W0080-D-015-005-C	8	15	0.50	-	0.63	33	Carbon Steel	Disc Spring Washer		1.00
	<i>0.315</i>	<i>0.591</i>	<i>0.020</i>		<i>0.025</i>					<i>0.039</i>
# W0080-D-015-007-C	8	15	0.70	-	0.80	67	Carbon Steel	Disc Spring Washer		1.10
	<i>0.315</i>	<i>0.591</i>	<i>0.028</i>		<i>0.031</i>					<i>0.043</i>

Indicates item not stocked at time of printing - Please enquire for lead time

Page 9 of 35

E&OE Pricing and all details subject to change without notice - Copyright Miniature Bearings Australia Pty Ltd
MBA Size Listings are a guide to sizes only and must not be solely relied on for critical design information.

Washers - Disc Spring - Carbon Steel

Part Number	Nominal ID (B) mm	Nominal OD (A) mm	Stock Thickness (C) mm	Load to flatten kg	Loaded Height (L1) mm	Load at L1 kg	Material	Type	Load at 0.75 Height Kg	Free Height (E) mm
	<i>inches</i>	<i>inches</i>	<i>inches</i>		<i>inches</i>					<i>inches</i>
W0080-D-015-008-C	8	15	0.80	-	0.90	98	Carbon Steel	Disc Spring Washer		1.20
	<i>0.315</i>	<i>0.591</i>	<i>0.031</i>		<i>0.035</i>					<i>0.047</i>
W0080-D-016-004-C	8	16	0.40	-	0.53	15	Carbon Steel	Disc Spring Washer		0.90
	<i>0.315</i>	<i>0.630</i>	<i>0.016</i>		<i>0.021</i>					<i>0.035</i>
W0080-D-016-006-C	8	16	0.60	-	0.71	41	Carbon Steel	Disc Spring Washer		1.05
	<i>0.315</i>	<i>0.630</i>	<i>0.024</i>		<i>0.028</i>					<i>0.041</i>
# W0080-D-016-007-C	8	16	0.70	-	0.81	64	Carbon Steel	Disc Spring Washer		1.15
	<i>0.315</i>	<i>0.630</i>	<i>0.028</i>		<i>0.032</i>					<i>0.045</i>
W0080-D-016-008-C	8	16	0.80	-	0.90	83	Carbon Steel	Disc Spring Washer		1.20
	<i>0.315</i>	<i>0.630</i>	<i>0.031</i>		<i>0.035</i>					<i>0.047</i>
# W0080-D-016-009-C	8	16	0.90	-	0.99	101	Carbon Steel	Disc Spring Washer		1.25
	<i>0.315</i>	<i>0.630</i>	<i>0.035</i>		<i>0.039</i>					<i>0.049</i>
# W0080-D-018-005-C	8	18	0.50	-	0.65	27	Carbon Steel	Disc Spring Washer		1.10
	<i>0.315</i>	<i>0.709</i>	<i>0.020</i>		<i>0.026</i>					<i>0.043</i>
# W0080-D-018-007-C	8	18	0.70	-	0.84	60	Carbon Steel	Disc Spring Washer		1.25
	<i>0.315</i>	<i>0.709</i>	<i>0.028</i>		<i>0.033</i>					<i>0.049</i>

Indicates item not stocked at time of printing - Please enquire for lead time

Page 10 of 35

E&OE Pricing and all details subject to change without notice - Copyright Miniature Bearings Australia Pty Ltd

MBA Size Listings are a guide to sizes only and must not be solely relied on for critical design information.

Washers - Disc Spring - Carbon Steel

Part Number	Nominal ID (B) mm	Nominal OD (A) mm	Stock Thickness (C) mm	Load to flatten kg	Loaded Height (L1) mm	Load at L1 kg	Material	Type	Load at 0.75 Height Kg	Free Height (E) mm
	<i>inches</i>	<i>inches</i>	<i>inches</i>		<i>inches</i>					<i>inches</i>
# W0080-D-018-008-C	8	18	0.80	-	0.92	58	Carbon Steel	Disc Spring Washer		1.30
	<i>0.315</i>	<i>0.709</i>	<i>0.031</i>		<i>0.036</i>					<i>0.051</i>
# W0080-D-018-010-C	8	18	1.00	-	1.10	118	Carbon Steel	Disc Spring Washer		1.40
	<i>0.315</i>	<i>0.709</i>	<i>0.039</i>		<i>0.043</i>					<i>0.055</i>
W0080-D-020-006-C	8	20	0.60	-	0.77	41	Carbon Steel	Disc Spring Washer		1.30
	<i>0.315</i>	<i>0.787</i>	<i>0.024</i>		<i>0.030</i>					<i>0.051</i>
# W0080-D-020-007-C	8	20	0.70	-	0.86	57	Carbon Steel	Disc Spring Washer		1.35
	<i>0.315</i>	<i>0.787</i>	<i>0.028</i>		<i>0.034</i>					<i>0.053</i>
# W0080-D-020-008-C	8	20	0.80	-	0.95	75	Carbon Steel	Disc Spring Washer		1.40
	<i>0.315</i>	<i>0.787</i>	<i>0.031</i>		<i>0.037</i>					<i>0.055</i>
W0080-D-020-009-C	8	20	0.90	-	1.04	95	Carbon Steel	Disc Spring Washer		1.45
	<i>0.315</i>	<i>0.787</i>	<i>0.035</i>		<i>0.041</i>					<i>0.057</i>
# W0080-D-020-010-C	8	20	1.00	-	1.14	129	Carbon Steel	Disc Spring Washer		1.55
	<i>0.315</i>	<i>0.787</i>	<i>0.039</i>		<i>0.045</i>					<i>0.061</i>
# W0080-D-023-007-C	8	23	0.70	-	0.90	54	Carbon Steel	Disc Spring Washer		1.50
	<i>0.315</i>	<i>0.906</i>	<i>0.028</i>		<i>0.035</i>					<i>0.059</i>

Indicates item not stocked at time of printing - Please enquire for lead time

Page 11 of 35

E&OE Pricing and all details subject to change without notice - Copyright Miniature Bearings Australia Pty Ltd

MBA Size Listings are a guide to sizes only and must not be solely relied on for critical design information.

Washers - Disc Spring - Carbon Steel

Part Number	Nominal ID (B) mm	Nominal OD (A) mm	Stock Thickness (C) mm	Load to flatten kg	Loaded Height (L1) mm	Load at L1 kg	Material	Type	Load at 0.75 Height Kg	Free Height (E) mm
	<i>inches</i>	<i>inches</i>	<i>inches</i>		<i>inches</i>					<i>inches</i>
# W0080-D-023-008-C	8	23	0.80	-	0.99	72	Carbon Steel	Disc Spring Washer		1.55
	<i>0.315</i>	<i>0.906</i>	<i>0.031</i>		<i>0.039</i>					<i>0.061</i>
# W0080-D-023-009-C	8	23	0.90	-	1.07	92	Carbon Steel	Disc Spring Washer		1.60
	<i>0.315</i>	<i>0.906</i>	<i>0.035</i>		<i>0.042</i>					<i>0.063</i>
W0080-D-023-010-C	8	23	1.00	-	1.17	124	Carbon Steel	Disc Spring Washer		1.70
	<i>0.315</i>	<i>0.906</i>	<i>0.039</i>		<i>0.046</i>					<i>0.067</i>
# W0090-D-018-005-C	9	18	0.45	-	0.60	21	Carbon Steel	Disc Spring Washer		1.05
	<i>0.354</i>	<i>0.709</i>	<i>0.018</i>		<i>0.024</i>					<i>0.041</i>
# W0090-D-018-007-C	9	18	0.70	-	0.83	57	Carbon Steel	Disc Spring Washer		1.20
	<i>0.354</i>	<i>0.709</i>	<i>0.028</i>		<i>0.033</i>					<i>0.047</i>
# W0090-D-018-010-C	9	18	1.00	-	1.10	125	Carbon Steel	Disc Spring Washer		1.40
	<i>0.354</i>	<i>0.709</i>	<i>0.039</i>		<i>0.043</i>					<i>0.055</i>
# W0095-D-019-010-C	9.525	19.05	1.02	185.27	1.24	104.9	AISI C1095 Spring Steel	Disc Spring Washer		1.50
	<i>0.375</i>	<i>0.750</i>	<i>0.040</i>		<i>0.049</i>					<i>0.059</i>
# W0100-D-020-005-C	10	20	0.50	-	0.66	25	Carbon Steel	Disc Spring Washer		1.15
	<i>0.394</i>	<i>0.787</i>	<i>0.020</i>		<i>0.026</i>					<i>0.045</i>

Indicates item not stocked at time of printing - Please enquire for lead time

Page 12 of 35

E&OE Pricing and all details subject to change without notice - Copyright Miniature Bearings Australia Pty Ltd
MBA Size Listings are a guide to sizes only and must not be solely relied on for critical design information.

Washers - Disc Spring - Carbon Steel

Part Number	Nominal ID (B) mm	Nominal OD (A) mm	Stock Thickness (C) mm	Load to flatten kg	Loaded Height (L1) mm	Load at L1 kg	Material	Type	Load at 0.75 Height Kg	Free Height (E) mm
	<i>inches</i>	<i>inches</i>	<i>inches</i>		<i>inches</i>					<i>inches</i>
W0100-D-020-008-C	10	20	0.80	-	0.94	75	Carbon Steel	Disc Spring Washer		1.35
	<i>0.394</i>	<i>0.787</i>	<i>0.031</i>		<i>0.037</i>					<i>0.053</i>
# W0100-D-020-009-C	10	20	0.90	-	1.04	105	Carbon Steel	Disc Spring Washer		1.45
	<i>0.394</i>	<i>0.787</i>	<i>0.035</i>		<i>0.041</i>					<i>0.057</i>
# W0100-D-020-010-C	10	20	1.00	-	1.14	142	Carbon Steel	Disc Spring Washer		1.55
	<i>0.394</i>	<i>0.787</i>	<i>0.039</i>		<i>0.045</i>					<i>0.061</i>
# W0100-D-020-011-C-L03	10	20	1.10		0.34				165.107	1.549
	<i>0.394</i>	<i>0.787</i>	<i>0.043</i>		<i>0.013</i>					<i>0.061</i>
# W0100-D-020-011-C-L12	10	20	1.10	-	1.21	152	Carbon Steel	Disc Spring Washer		1.55
	<i>0.394</i>	<i>0.787</i>	<i>0.043</i>		<i>0.048</i>					<i>0.061</i>
# W0100-D-020-013-C	10	20	1.25	-	1.38	248	Carbon Steel	Disc Spring Washer		1.75
	<i>0.394</i>	<i>0.787</i>	<i>0.049</i>		<i>0.054</i>					<i>0.069</i>
# W0100-D-020-015-C	10	20	1.50	-	1.58	252	Carbon Steel	Disc Spring Washer		1.80
	<i>0.394</i>	<i>0.787</i>	<i>0.059</i>		<i>0.062</i>					<i>0.071</i>
# W0100-D-023-009-C	10	23	0.90	-	1.09	106	Carbon Steel	Disc Spring Washer		1.65
	<i>0.394</i>	<i>0.906</i>	<i>0.035</i>		<i>0.043</i>					<i>0.065</i>

Indicates item not stocked at time of printing - Please enquire for lead time

Page 13 of 35

E&OE Pricing and all details subject to change without notice - Copyright Miniature Bearings Australia Pty Ltd
MBA Size Listings are a guide to sizes only and must not be solely relied on for critical design information.

Washers - Disc Spring - Carbon Steel

Part Number	Nominal ID (B) mm	Nominal OD (A) mm	Stock Thickness (C) mm	Load to flatten kg	Loaded Height (L1) mm	Load at L1 kg	Material	Type	Load at 0.75 Height Kg	Free Height (E) mm
	<i>inches</i>	<i>inches</i>	<i>inches</i>		<i>inches</i>					<i>inches</i>
# W0100-D-023-010-C	10	23	1.00	-	1.17	132	Carbon Steel	Disc Spring Washer		1.70
	<i>0.394</i>	<i>0.906</i>	<i>0.039</i>		<i>0.046</i>					<i>0.067</i>
# W0100-D-023-013-C	10	23	1.25	-	1.41	204	Carbon Steel	Disc Spring Washer		1.90
	<i>0.394</i>	<i>0.906</i>	<i>0.049</i>		<i>0.056</i>					<i>0.075</i>
# W0100-D-025-010-C	10	25	1.00	-	1.19	117	Carbon Steel	Disc Spring Washer		1.75
	<i>0.394</i>	<i>0.984</i>	<i>0.039</i>		<i>0.047</i>					<i>0.069</i>
W0100-D-028-008-C	10	28	0.80	-	1.04	66	Carbon Steel	Disc Spring Washer		1.75
	<i>0.394</i>	<i>1.102</i>	<i>0.031</i>		<i>0.041</i>					<i>0.069</i>
W0100-D-028-010-C	10	28	1.00	-	1.23	113	Carbon Steel	Disc Spring Washer		1.90
	<i>0.394</i>	<i>1.102</i>	<i>0.039</i>		<i>0.048</i>					<i>0.075</i>
# W0100-D-028-013-C	10	28	1.25	-	1.45	185	Carbon Steel	Disc Spring Washer		2.05
	<i>0.394</i>	<i>1.102</i>	<i>0.049</i>		<i>0.057</i>					<i>0.081</i>
# W0100-D-028-015-C	10	28	1.50	-	1.67	272	Carbon Steel	Disc Spring Washer		2.20
	<i>0.394</i>	<i>1.102</i>	<i>0.059</i>		<i>0.066</i>					<i>0.087</i>
# W0110-D-023-006-C	11	22.5	0.60	-	0.80	43	Carbon Steel	Disc Spring Washer		1.40
	<i>0.433</i>	<i>0.886</i>	<i>0.024</i>		<i>0.031</i>					<i>0.055</i>

Indicates item not stocked at time of printing - Please enquire for lead time

Page 14 of 35

E&OE Pricing and all details subject to change without notice - Copyright Miniature Bearings Australia Pty Ltd

MBA Size Listings are a guide to sizes only and must not be solely relied on for critical design information.

Washers - Disc Spring - Carbon Steel

Part Number	Nominal ID (B) mm	Nominal OD (A) mm	Stock Thickness (C) mm	Load to flatten kg	Loaded Height (L1) mm	Load at L1 kg	Material	Type	Load at 0.75 Height Kg	Free Height (E) mm
	<i>inches</i>	<i>inches</i>	<i>inches</i>		<i>inches</i>					<i>inches</i>
# W0110-D-023-008-C	11	22.5	0.80	-	0.96	71	Carbon Steel	Disc Spring Washer		1.45
	0.433	0.886	0.031		0.038					0.057
# W0110-D-023-013-C	11	22.5	1.25	-	1.38	193	Carbon Steel	Disc Spring Washer		1.75
	0.433	0.886	0.049		0.054					0.069
W0120-D-023-013-C	12	23	1.25	-	1.40	233	Carbon Steel	Disc Spring Washer		1.85
	0.472	0.906	0.049		0.055					0.073
# W0120-D-023-015-C	12	23	1.50	-	1.63	330	Carbon Steel	Disc Spring Washer		2.00
	0.472	0.906	0.059		0.064					0.079
# W0120-D-025-007-C	12	25	0.70	-	0.92	60	Carbon Steel	Disc Spring Washer		1.60
	0.472	0.984	0.028		0.036					0.063
W0120-D-025-009-C	12	25	0.90	-	1.07	86	Carbon Steel	Disc Spring Washer		1.60
	0.472	0.984	0.035		0.042					0.063
W0120-D-025-010-C	12	25	1.00	-	1.20	136	Carbon Steel	Disc Spring Washer		1.80
	0.472	0.984	0.039		0.047					0.071
# W0120-D-025-013-C	12	25	1.25	-	1.42	221	Carbon Steel	Disc Spring Washer		1.95
	0.472	0.984	0.049		0.056					0.077

Indicates item not stocked at time of printing - Please enquire for lead time

Page 15 of 35

E&OE Pricing and all details subject to change without notice - Copyright Miniature Bearings Australia Pty Ltd
MBA Size Listings are a guide to sizes only and must not be solely relied on for critical design information.

Washers - Disc Spring - Carbon Steel

Part Number	Nominal ID (B) mm	Nominal OD (A) mm	Stock Thickness (C) mm	Load to flatten kg	Loaded Height (L1) mm	Load at L1 kg	Material	Type	Load at 0.75 Height Kg	Free Height (E) mm
	<i>inches</i>	<i>inches</i>	<i>inches</i>		<i>inches</i>					<i>inches</i>
# W0120-D-025-015-C	12	25	1.50	-	1.64	292	Carbon Steel	Disc Spring Washer		2.05
	0.472	0.984	0.059		0.065					0.081
W0120-D-028-010-C	12	28	1.00	-	1.24	127	Carbon Steel	Disc Spring Washer		1.95
	0.472	1.102	0.039		0.049					0.077
# W0120-D-028-013-C	12	28	1.25	-	1.46	208	Carbon Steel	Disc Spring Washer		2.10
	0.472	1.102	0.049		0.057					0.083
# W0120-D-028-015-C	12	28	1.50	-	1.69	308	Carbon Steel	Disc Spring Washer		2.25
	0.472	1.102	0.059		0.067					0.089
# W0120-D-032-015-C	12	31.5	1.50	-	1.71	269	Carbon Steel	Disc Spring Washer		2.35
	0.472	1.240	0.059		0.067					0.093
# W0120-D-034-010-C	12	34	1.00	-	1.31	117	Carbon Steel	Disc Spring Washer		2.25
	0.472	1.339	0.039		0.052					0.089
# W0120-D-034-013-C	12	34	1.25	-	1.53	181	Carbon Steel	Disc Spring Washer		2.35
	0.472	1.339	0.049		0.060					0.093
# W0120-D-034-015-C	12	34	1.50	-	1.75	272	Carbon Steel	Disc Spring Washer		2.50
	0.472	1.339	0.059		0.069					0.098

Indicates item not stocked at time of printing - Please enquire for lead time

Page 16 of 35

E&OE Pricing and all details subject to change without notice - Copyright Miniature Bearings Australia Pty Ltd

MBA Size Listings are a guide to sizes only and must not be solely relied on for critical design information.

Washers - Disc Spring - Carbon Steel

Part Number	Nominal ID (B) mm	Nominal OD (A) mm	Stock Thickness (C) mm	Load to flatten kg	Loaded Height (L1) mm	Load at L1 kg	Material	Type	Load at 0.75 Height Kg	Free Height (E) mm
	<i>inches</i>	<i>inches</i>	<i>inches</i>		<i>inches</i>					<i>inches</i>
# W0127-D-025-013-C	12.7	25.4	1.27	267.86	1.57	151.8	AISI C1095 Spring Steel	Disc Spring Washer		1.91
	<i>0.500</i>	<i>1.000</i>	<i>0.050</i>		<i>0.062</i>					<i>0.075</i>
# W0140-D-028-008-C	14	28	0.80	-	1.05	80	Carbon Steel	Disc Spring Washer		1.80
	<i>0.551</i>	<i>1.102</i>	<i>0.031</i>		<i>0.041</i>					<i>0.071</i>
# W0140-D-028-010-C	14	28	1.00	-	1.20	111	Carbon Steel	Disc Spring Washer		1.80
	<i>0.551</i>	<i>1.102</i>	<i>0.039</i>		<i>0.047</i>					<i>0.071</i>
W0140-D-028-013-C	14	28	1.25	-	1.46	224	Carbon Steel	Disc Spring Washer		2.10
	<i>0.551</i>	<i>1.102</i>	<i>0.049</i>		<i>0.057</i>					<i>0.083</i>
W0140-D-028-015-C	14	28	1.50	-	1.66	284	Carbon Steel	Disc Spring Washer		2.15
	<i>0.551</i>	<i>1.102</i>	<i>0.059</i>		<i>0.065</i>					<i>0.085</i>
# W0140-D-034-013-C	14	34	1.25	-	1.54	199	Carbon Steel	Disc Spring Washer		2.40
	<i>0.551</i>	<i>1.339</i>	<i>0.049</i>		<i>0.061</i>					<i>0.094</i>
# W0140-D-034-015-C	14	34	1.50	-	1.76	298	Carbon Steel	Disc Spring Washer		2.55
	<i>0.551</i>	<i>1.339</i>	<i>0.059</i>		<i>0.069</i>					<i>0.100</i>
# W0140-D-040-013-C	14	40	1.25	-	1.60	178	Carbon Steel	Disc Spring Washer		2.65
	<i>0.551</i>	<i>1.575</i>	<i>0.049</i>		<i>0.063</i>					<i>0.104</i>

Indicates item not stocked at time of printing - Please enquire for lead time

Page 17 of 35

E&OE Pricing and all details subject to change without notice - Copyright Miniature Bearings Australia Pty Ltd

MBA Size Listings are a guide to sizes only and must not be solely relied on for critical design information.

Washers - Disc Spring - Carbon Steel

Part Number	Nominal ID (B) mm	Nominal OD (A) mm	Stock Thickness (C) mm	Load to flatten kg	Loaded Height (L1) mm	Load at L1 kg	Material	Type	Load at 0.75 Height Kg	Free Height (E) mm
	<i>inches</i>	<i>inches</i>	<i>inches</i>		<i>inches</i>					<i>inches</i>
# W0140-D-040-015-C	14	40	1.50	-	1.81	254	Carbon Steel	Disc Spring Washer		2.75
	<i>0.551</i>	<i>1.575</i>	<i>0.059</i>		<i>0.071</i>					<i>0.108</i>
# W0140-D-040-020-C	14	40	2.00	-	2.26	477	Carbon Steel	Disc Spring Washer		3.05
	<i>0.551</i>	<i>1.575</i>	<i>0.079</i>		<i>0.089</i>					<i>0.120</i>
# W0159-D-032-016-C	15.875	31.75	1.57	388.39	1.96	212.1	AISI C1095 Spring Steel	Disc Spring Washer		2.34
	<i>0.625</i>	<i>1.250</i>	<i>0.062</i>		<i>0.077</i>					<i>0.092</i>
# W0160-D-031-013-C	16	31.496	1.25		0.68				205.931	2.149
	<i>0.630</i>	<i>1.240</i>	<i>0.049</i>		<i>0.027</i>					<i>0.085</i>
# W0160-D-031-018-C	16	31.496	1.75		0.53				421.841	2.451
	<i>0.630</i>	<i>1.240</i>	<i>0.069</i>		<i>0.021</i>					<i>0.096</i>
W0160-D-031-020-C	16	31.496	2.00		0.57				679.027	2.751
	<i>0.630</i>	<i>1.240</i>	<i>0.079</i>		<i>0.022</i>					<i>0.108</i>
W0160-D-032-008-C	16	31.5	0.80	-	1.06	69	Carbon Steel	Disc Spring Washer		1.85
	<i>0.630</i>	<i>1.240</i>	<i>0.031</i>		<i>0.042</i>					<i>0.073</i>
# W0160-D-032-013-C	16	31.5	1.25	-	1.48	191	Carbon Steel	Disc Spring Washer		2.15
	<i>0.630</i>	<i>1.240</i>	<i>0.049</i>		<i>0.058</i>					<i>0.085</i>
# W0160-D-032-015-C	16	31.5	1.50	-	1.73	323	Carbon Steel	Disc Spring Washer		2.40
	<i>0.630</i>	<i>1.240</i>	<i>0.059</i>		<i>0.068</i>					<i>0.094</i>

Indicates item not stocked at time of printing - Please enquire for lead time

Page 18 of 35

E&OE Pricing and all details subject to change without notice - Copyright Miniature Bearings Australia Pty Ltd
MBA Size Listings are a guide to sizes only and must not be solely relied on for critical design information.

Washers - Disc Spring - Carbon Steel

Part Number	Nominal ID (B) mm	Nominal OD (A) mm	Stock Thickness (C) mm	Load to flatten kg	Loaded Height (L1) mm	Load at L1 kg	Material	Type	Load at 0.75 Height Kg	Free Height (E) mm
	<i>inches</i>	<i>inches</i>	<i>inches</i>		<i>inches</i>					<i>inches</i>
# W0160-D-032-018-C	16	31.5	1.75	-	1.92	387	Carbon Steel	Disc Spring Washer		2.45
	<i>0.630</i>	<i>1.240</i>	<i>0.069</i>		<i>0.076</i>					<i>0.096</i>
W0160-D-032-020-C	16	31.5	2.00	-	2.19	617	Carbon Steel	Disc Spring Washer		2.75
	<i>0.630</i>	<i>1.240</i>	<i>0.079</i>		<i>0.086</i>					<i>0.108</i>
# W0160-D-034-015-C	16	34	1.50	-	1.76	315	Carbon Steel	Disc Spring Washer		2.55
	<i>0.630</i>	<i>1.339</i>	<i>0.059</i>		<i>0.069</i>					<i>0.100</i>
W0160-D-034-020-C	16	34	2.00	-	2.21	578	Carbon Steel	Disc Spring Washer		2.85
	<i>0.630</i>	<i>1.339</i>	<i>0.079</i>		<i>0.087</i>					<i>0.112</i>
# W0160-D-040-015-C	16	39.878	1.50	-	0.98				298.464	2.799
	<i>0.630</i>	<i>1.570</i>	<i>0.059</i>		<i>0.039</i>					<i>0.110</i>
# W0160-D-040-020-C	16	40	2.00	-	2.28	517	Carbon Steel	Disc Spring Washer		3.10
	<i>0.630</i>	<i>1.575</i>	<i>0.079</i>		<i>0.090</i>					<i>0.122</i>
W0180-D-036-009-C	18	35.5	0.90	-	1.19	83	Carbon Steel	Disc Spring Washer		2.05
	<i>0.709</i>	<i>1.398</i>	<i>0.035</i>		<i>0.047</i>					<i>0.081</i>
# W0180-D-036-013-C	18	35.5	1.25	-	1.50	170	Carbon Steel	Disc Spring Washer		2.25
	<i>0.709</i>	<i>1.398</i>	<i>0.049</i>		<i>0.059</i>					<i>0.089</i>

Indicates item not stocked at time of printing - Please enquire for lead time

Page 19 of 35

E&OE Pricing and all details subject to change without notice - Copyright Miniature Bearings Australia Pty Ltd
MBA Size Listings are a guide to sizes only and must not be solely relied on for critical design information.

Washers - Disc Spring - Carbon Steel

Part Number	Nominal ID (B) mm	Nominal OD (A) mm	Stock Thickness (C) mm	Load to flatten kg	Loaded Height (L1) mm	Load at L1 kg	Material	Type	Load at 0.75 Height Kg	Free Height (E) mm
	<i>inches</i>	<i>inches</i>	<i>inches</i>		<i>inches</i>					<i>inches</i>
# W0180-D-036-020-C	18 <i>0.709</i>	35.5 <i>1.398</i>	2.00 <i>0.079</i>		0.61 <i>0.024</i>				560.640	2.799 <i>0.110</i>
# W0180-D-040-020-C	18 <i>0.709</i>	40 <i>1.575</i>	2.00 <i>0.079</i>	-	2.29 <i>0.090</i>	565	Carbon Steel	Disc Spring Washer		3.15 <i>0.124</i>
# W0180-D-050-015-C	18 <i>0.709</i>	50 <i>1.969</i>	1.50 <i>0.059</i>	-	1.95 <i>0.077</i>	260	Carbon Steel	Disc Spring Washer		3.30 <i>0.130</i>
# W0180-D-050-020-C	18 <i>0.709</i>	50 <i>1.969</i>	2.00 <i>0.079</i>	-	2.38 <i>0.094</i>	456	Carbon Steel	Disc Spring Washer		3.50 <i>0.138</i>
W0180-D-050-025-C	18 <i>0.709</i>	50 <i>1.969</i>	2.50 <i>0.098</i>	-	2.90 <i>0.114</i>	930	Carbon Steel	Disc Spring Washer		4.10 <i>0.161</i>
# W0180-D-050-030-C	18 <i>0.709</i>	50 <i>1.969</i>	3.00 <i>0.118</i>	-	3.35 <i>0.132</i>	1367	Carbon Steel	Disc Spring Washer		4.40 <i>0.173</i>
# W0191-D-038-018-C	19.05 <i>0.750</i>	38.1 <i>1.500</i>	1.83 <i>0.072</i>	526.79	2.26 <i>0.089</i>	294.6	AISI C1095 Spring Steel	Disc Spring Washer		2.73 <i>0.107</i>
W0200-D-040-010-C	20 <i>0.787</i>	40 <i>1.575</i>	1.00 <i>0.039</i>	-	1.33 <i>0.052</i>	102	Carbon Steel	Disc Spring Washer		2.30 <i>0.091</i>

Indicates item not stocked at time of printing - Please enquire for lead time

Page 20 of 35

E&OE Pricing and all details subject to change without notice - Copyright Miniature Bearings Australia Pty Ltd
MBA Size Listings are a guide to sizes only and must not be solely relied on for critical design information.

Washers - Disc Spring - Carbon Steel

Part Number	Nominal ID (B) mm	Nominal OD (A) mm	Stock Thickness (C) mm	Load to flatten kg	Loaded Height (L1) mm	Load at L1 kg	Material	Type	Load at 0.75 Height Kg	Free Height (E) mm
	<i>inches</i>	<i>inches</i>	<i>inches</i>		<i>inches</i>					<i>inches</i>
W0200-D-040-015-C	20	40	1.50	-	1.79	262	Carbon Steel	Disc Spring Washer		2.65
	<i>0.787</i>	<i>1.575</i>	<i>0.059</i>		<i>0.070</i>					<i>0.104</i>
# W0200-D-040-020-C	20	40	2.00	-	2.28	570	Carbon Steel	Disc Spring Washer		3.10
	<i>0.787</i>	<i>1.575</i>	<i>0.079</i>		<i>0.090</i>					<i>0.122</i>
# W0200-D-040-023-C	20	40	2.25		0.68				712.139	3.150
	<i>0.787</i>	<i>1.575</i>	<i>0.089</i>		<i>0.027</i>					<i>0.124</i>
# W0200-D-040-025-C	20	40	2.50		0.72				1036.911	3.449
	<i>0.787</i>	<i>1.575</i>	<i>0.098</i>		<i>0.028</i>					<i>0.136</i>
# W0200-D-050-020-C	20	50	2.00	-	2.38	469	Carbon Steel	Disc Spring Washer		3.50
	<i>0.787</i>	<i>1.969</i>	<i>0.079</i>		<i>0.094</i>					<i>0.138</i>
# W0200-D-050-025-C	20	50	2.50	-	2.84	792	Carbon Steel	Disc Spring Washer		3.85
	<i>0.787</i>	<i>1.969</i>	<i>0.098</i>		<i>0.112</i>					<i>0.152</i>
# W0200-D-060-020-C	20	60	2.00	-	2.52	472	Carbon Steel	Disc Spring Washer		4.10
	<i>0.787</i>	<i>2.362</i>	<i>0.079</i>		<i>0.099</i>					<i>0.161</i>
# W0200-D-060-025-C	20	60	2.50	-	2.95	729	Carbon Steel	Disc Spring Washer		4.30
	<i>0.787</i>	<i>2.362</i>	<i>0.098</i>		<i>0.116</i>					<i>0.169</i>

Indicates item not stocked at time of printing - Please enquire for lead time

Page 21 of 35

E&OE Pricing and all details subject to change without notice - Copyright Miniature Bearings Australia Pty Ltd

MBA Size Listings are a guide to sizes only and must not be solely relied on for critical design information.

Washers - Disc Spring - Carbon Steel

Part Number	Nominal ID (B) mm	Nominal OD (A) mm	Stock Thickness (C) mm	Load to flatten kg	Loaded Height (L1) mm	Load at L1 kg	Material	Type	Load at 0.75 Height Kg	Free Height (E) mm
	<i>inches</i>	<i>inches</i>	<i>inches</i>		<i>inches</i>					<i>inches</i>
# W0200-D-060-030-C	20	60	3.00	-	3.42	1156	Carbon Steel	Disc Spring Washer		4.70
	<i>0.787</i>	<i>2.362</i>	<i>0.118</i>		<i>0.135</i>					<i>0.185</i>
W0220-D-045-013-C	22	45	1.25	-	1.65	189	Carbon Steel	Disc Spring Washer		2.85
	<i>0.866</i>	<i>1.772</i>	<i>0.049</i>		<i>0.065</i>					<i>0.112</i>
W0220-D-045-018-C	22	45	1.75	-	2.08	364	Carbon Steel	Disc Spring Washer		3.05
	<i>0.866</i>	<i>1.772</i>	<i>0.069</i>		<i>0.082</i>					<i>0.120</i>
W0220-D-045-025-C	22	45	2.50	-	2.75	771	Carbon Steel	Disc Spring Washer		3.50
	<i>0.866</i>	<i>1.772</i>	<i>0.098</i>		<i>0.108</i>					<i>0.138</i>
# W0220-D-050-020-C	22	50	2.00	-	2.40	522	Carbon Steel	Disc Spring Washer		3.60
	<i>0.866</i>	<i>1.969</i>	<i>0.079</i>		<i>0.094</i>					<i>0.142</i>
# W0220-D-050-025-C	22	50	2.50	-	2.85	851	Carbon Steel	Disc Spring Washer		3.90
	<i>0.866</i>	<i>1.969</i>	<i>0.098</i>		<i>0.112</i>					<i>0.154</i>
# W0250-D-050-013-C	25	50	1.25	-	1.65	155	Carbon Steel	Disc Spring Washer		2.85
	<i>0.984</i>	<i>1.969</i>	<i>0.049</i>		<i>0.065</i>					<i>0.112</i>
# W0250-D-050-020-C	25	50	2.00	-	2.35	476	Carbon Steel	Disc Spring Washer		3.40
	<i>0.984</i>	<i>1.969</i>	<i>0.079</i>		<i>0.093</i>					<i>0.134</i>

Indicates item not stocked at time of printing - Please enquire for lead time

Page 22 of 35

E&OE Pricing and all details subject to change without notice - Copyright Miniature Bearings Australia Pty Ltd

MBA Size Listings are a guide to sizes only and must not be solely relied on for critical design information.

Washers - Disc Spring - Carbon Steel

Part Number	Nominal ID (B) mm	Nominal OD (A) mm	Stock Thickness (C) mm	Load to flatten kg	Loaded Height (L1) mm	Load at L1 kg	Material	Type	Load at 0.75 Height Kg	Free Height (E) mm
	<i>inches</i>	<i>inches</i>	<i>inches</i>		<i>inches</i>					<i>inches</i>
# W0250-D-050-025-C	25	50	2.50	-	2.85	906	Carbon Steel	Disc Spring Washer		3.90
	<i>0.984</i>	<i>1.969</i>	<i>0.098</i>		<i>0.112</i>					<i>0.154</i>
W0250-D-050-030-C	25	50	3.00	-	3.28	1197	Carbon Steel	Disc Spring Washer		4.10
	<i>0.984</i>	<i>1.969</i>	<i>0.118</i>		<i>0.129</i>					<i>0.161</i>
# W0250-D-060-025-C	25	60	2.50	-	2.97	816	Carbon Steel	Disc Spring Washer		4.40
	<i>0.984</i>	<i>2.362</i>	<i>0.098</i>		<i>0.117</i>					<i>0.173</i>
# W0250-D-060-030-C	25	60	3.00	-	3.41	1176	Carbon Steel	Disc Spring Washer		4.65
	<i>0.984</i>	<i>2.362</i>	<i>0.118</i>		<i>0.134</i>					<i>0.183</i>
# W0250-D-070-020-C	25	70	2.00	-	2.63	444	Carbon Steel	Disc Spring Washer		4.50
	<i>0.984</i>	<i>2.756</i>	<i>0.079</i>		<i>0.104</i>					<i>0.177</i>
# W0280-D-056-015-C	28	56	1.50	-	1.99	262	Carbon Steel	Disc Spring Washer		3.45
	<i>1.102</i>	<i>2.205</i>	<i>0.059</i>		<i>0.078</i>					<i>0.136</i>
# W0280-D-056-020-C	28	56	2.00	-	2.40	444	Carbon Steel	Disc Spring Washer		3.60
	<i>1.102</i>	<i>2.205</i>	<i>0.079</i>		<i>0.094</i>					<i>0.142</i>
# W0280-D-056-030-C	28	56	3.00	-	3.33	1138	Carbon Steel	Disc Spring Washer		4.30
	<i>1.102</i>	<i>2.205</i>	<i>0.118</i>		<i>0.131</i>					<i>0.169</i>

Indicates item not stocked at time of printing - Please enquire for lead time

Page 23 of 35

E&OE Pricing and all details subject to change without notice - Copyright Miniature Bearings Australia Pty Ltd

MBA Size Listings are a guide to sizes only and must not be solely relied on for critical design information.

Washers - Disc Spring - Carbon Steel

Part Number	Nominal ID (B) mm	Nominal OD (A) mm	Stock Thickness (C) mm	Load to flatten kg	Loaded Height (L1) mm	Load at L1 kg	Material	Type	Load at 0.75 Height Kg	Free Height (E) mm
	<i>inches</i>	<i>inches</i>	<i>inches</i>		<i>inches</i>					<i>inches</i>
# W0300-D-060-030-C	30 <i>1.181</i>	59.944 <i>2.360</i>	3.00 <i>0.118</i>		1.29 <i>0.051</i>				1444.237	4.699 <i>0.185</i>
# W0300-D-060-025-C	30 <i>1.181</i>	60 <i>2.362</i>	2.50 <i>0.098</i>	-	2.95 <i>0.116</i>	834	Carbon Steel	Disc Spring Washer		4.30 <i>0.169</i>
# W0300-D-060-035-C	30 <i>1.181</i>	60 <i>2.362</i>	3.50 <i>0.138</i>	-	3.88 <i>0.153</i>	1814	Carbon Steel	Disc Spring Washer		5.00 <i>0.197</i>
# W0300-D-070-025-C	30 <i>1.181</i>	70 <i>2.756</i>	2.50 <i>0.098</i>	-	3.10 <i>0.122</i>	803	Carbon Steel	Disc Spring Washer		4.90 <i>0.193</i>
# W0300-D-070-030-C	30 <i>1.181</i>	70 <i>2.756</i>	3.00 <i>0.118</i>	-	3.52 <i>0.139</i>	1142	Carbon Steel	Disc Spring Washer		5.10 <i>0.201</i>
# W0302-D-063-025-C	30.16 <i>1.187</i>	62.992 <i>2.480</i>	2.50 <i>0.098</i>		1.32 <i>0.052</i>				773.374	4.249 <i>0.167</i>
# W0310-D-063-018-C	31 <i>1.220</i>	63 <i>2.480</i>	1.80 <i>0.071</i>	-	2.39 <i>0.094</i>	424	Carbon Steel	Disc Spring Washer		4.15 <i>0.163</i>
# W0310-D-063-025-C	31 <i>1.220</i>	63 <i>2.480</i>	2.50 <i>0.098</i>	-	2.94 <i>0.116</i>	719	Carbon Steel	Disc Spring Washer		4.25 <i>0.167</i>

Indicates item not stocked at time of printing - Please enquire for lead time

E&OE Pricing and all details subject to change without notice - Copyright Miniature Bearings Australia Pty Ltd

MBA Size Listings are a guide to sizes only and must not be solely relied on for critical design information.

Washers - Disc Spring - Carbon Steel

Part Number	Nominal ID (B) mm	Nominal OD (A) mm	Stock Thickness (C) mm	Load to flatten kg	Loaded Height (L1) mm	Load at L1 kg	Material	Type	Load at 0.75 Height Kg	Free Height (E) mm
	<i>inches</i>	<i>inches</i>	<i>inches</i>		<i>inches</i>					<i>inches</i>
# W0310-D-063-030-C	31	63	3.00	-	3.45	1253	Carbon Steel	Disc Spring Washer		4.80
	1.220	2.480	0.118		0.136					0.189
# W0310-D-063-035-C	31	63	3.50	-	3.85	1502	Carbon Steel	Disc Spring Washer		4.90
	1.220	2.480	0.138		0.152					0.193
# W0310-D-080-025-C	31	80	2.50	-	3.20	724	Carbon Steel	Disc Spring Washer		5.30
	1.220	3.150	0.098		0.126					0.209
# W0310-D-080-030-C	31	80	3.00	-	3.63	1035	Carbon Steel	Disc Spring Washer		5.50
	1.220	3.150	0.118		0.143					0.217
# W0310-D-080-040-C	31	80	4.00	-	4.52	1938	Carbon Steel	Disc Spring Washer		6.10
	1.220	3.150	0.157		0.178					0.240
# W0350-D-070-040-C	35	70	4.00	-	4.45	2391	Carbon Steel	Disc Spring Washer		5.80
	1.378	2.756	0.157		0.175					0.228
# W0350-D-070-030-C	35	71	3.00	-	1.59				1326.303	5.100
	1.378	2.795	0.118		0.063					0.201
# W0360-D-071-020-C	36	71	2.00	-	2.65	514	Carbon Steel	Disc Spring Washer		4.60
	1.417	2.795	0.079		0.104					0.181

Indicates item not stocked at time of printing - Please enquire for lead time

Page 25 of 35

E&OE Pricing and all details subject to change without notice - Copyright Miniature Bearings Australia Pty Ltd
MBA Size Listings are a guide to sizes only and must not be solely relied on for critical design information.

Washers - Disc Spring - Carbon Steel

Part Number	Nominal ID (B) mm	Nominal OD (A) mm	Stock Thickness (C) mm	Load to flatten kg	Loaded Height (L1) mm	Load at L1 kg	Material	Type	Load at 0.75 Height Kg	Free Height (E) mm
	<i>inches</i>	<i>inches</i>	<i>inches</i>		<i>inches</i>					<i>inches</i>
# W0360-D-071-025-C	36	71	2.50	-	3.00	672	Carbon Steel	Disc Spring Washer		4.50
	1.417	2.795	0.098		0.118					0.177
# W0360-D-071-040-C	36	71	4.00	-	4.40	2052	Carbon Steel	Disc Spring Washer		5.60
	1.417	2.795	0.157		0.173					0.220
# W0360-D-080-030-C	36	80	3.00	-	3.67	1191	Carbon Steel	Disc Spring Washer		5.70
	1.417	3.150	0.118		0.144					0.224
# W0360-D-080-040-C	36	80	4.00	-	4.55	2139	Carbon Steel	Disc Spring Washer		6.20
	1.417	3.150	0.157		0.179					0.244
# W0405-D-070-040-C	40.5	70	4.00	-	1.22				2548.733	5.601
	1.594	2.756	0.157		0.048					0.221
# W0405-D-070-050-C	40.5	70	5.00	-	5.30	3365	Carbon Steel	Disc Spring Washer		6.20
	1.594	2.756	0.197		0.209					0.244
# W0405-D-080-030-C	40.5	80	3.00	-	1.74				1129.898	5.301
	1.594	3.150	0.118		0.069					0.209
# W0405-D-080-050-C	40.5	80	5.00	-	1.29				3656.859	6.701
	1.594	3.150	0.197		0.051					0.264
# W0410-D-080-023-C	41	80	2.25	-	2.99	661	Carbon Steel	Disc Spring Washer		5.20
	1.614	3.150	0.089		0.118					0.205

Indicates item not stocked at time of printing - Please enquire for lead time

Page 26 of 35

E&OE Pricing and all details subject to change without notice - Copyright Miniature Bearings Australia Pty Ltd
MBA Size Listings are a guide to sizes only and must not be solely relied on for critical design information.

Washers - Disc Spring - Carbon Steel

Part Number	Nominal ID (B) mm	Nominal OD (A) mm	Stock Thickness (C) mm	Load to flatten kg	Loaded Height (L1) mm	Load at L1 kg	Material	Type	Load at 0.75 Height Kg	Free Height (E) mm
	<i>inches</i>	<i>inches</i>	<i>inches</i>		<i>inches</i>					<i>inches</i>
W0410-D-080-030-C	41	80	3.00	-	3.58	1051	Carbon Steel	Disc Spring Washer		5.30
	<i>1.614</i>	<i>3.150</i>	<i>0.118</i>		<i>0.141</i>					<i>0.209</i>
# W0410-D-080-040-C	41	80	4.00	-	4.55	2286	Carbon Steel	Disc Spring Washer		6.20
	<i>1.614</i>	<i>3.150</i>	<i>0.157</i>		<i>0.179</i>					<i>0.244</i>
# W0410-D-080-050-C	41	80	5.00	-	5.42	3354	Carbon Steel	Disc Spring Washer		6.70
	<i>1.614</i>	<i>3.150</i>	<i>0.197</i>		<i>0.213</i>					<i>0.264</i>
# W0410-D-100-040-C	41	100	4.00	-	4.80	2024	Carbon Steel	Disc Spring Washer		7.20
	<i>1.614</i>	<i>3.937</i>	<i>0.157</i>		<i>0.189</i>					<i>0.283</i>
# W0410-D-100-050-C	41	100	5.00	-	5.69	3234	Carbon Steel	Disc Spring Washer		7.75
	<i>1.614</i>	<i>3.937</i>	<i>0.197</i>		<i>0.224</i>					<i>0.305</i>
# W0410-D-125-040-C	41	125	4.00	-	5.05	1734	Carbon Steel	Disc Spring Washer		8.20
	<i>1.614</i>	<i>4.921</i>	<i>0.157</i>		<i>0.199</i>					<i>0.323</i>
# W0460-D-090-025-C	46	90	2.50	-	3.30	768	Carbon Steel	Disc Spring Washer		5.70
	<i>1.811</i>	<i>3.543</i>	<i>0.098</i>		<i>0.130</i>					<i>0.224</i>
# W0460-D-090-035-C	46	90	3.50	-	4.13	1415	Carbon Steel	Disc Spring Washer		6.00
	<i>1.811</i>	<i>3.543</i>	<i>0.138</i>		<i>0.163</i>					<i>0.236</i>

Indicates item not stocked at time of printing - Please enquire for lead time

Page 27 of 35

E&OE Pricing and all details subject to change without notice - Copyright Miniature Bearings Australia Pty Ltd

MBA Size Listings are a guide to sizes only and must not be solely relied on for critical design information.

Washers - Disc Spring - Carbon Steel

Part Number	Nominal ID (B) mm	Nominal OD (A) mm	Stock Thickness (C) mm	Load to flatten kg	Loaded Height (L1) mm	Load at L1 kg	Material	Type	Load at 0.75 Height Kg	Free Height (E) mm
	<i>inches</i>	<i>inches</i>	<i>inches</i>		<i>inches</i>					<i>inches</i>
# W0460-D-090-050-C	46	90	5.00	-	5.50	3134	Carbon Steel	Disc Spring Washer		7.00
	<i>1.811</i>	<i>3.543</i>	<i>0.197</i>		<i>0.217</i>					<i>0.276</i>
# W0510-D-100-027-C	51	100	2.70	-	3.58	860	Carbon Steel	Disc Spring Washer		6.20
	<i>2.008</i>	<i>3.937</i>	<i>0.106</i>		<i>0.141</i>					<i>0.244</i>
# W0510-D-100-035-C	51	100	3.50	-	4.20	1306	Carbon Steel	Disc Spring Washer		6.30
	<i>2.008</i>	<i>3.937</i>	<i>0.138</i>		<i>0.165</i>					<i>0.248</i>
# W0510-D-100-040-C	51	100	4.00	-	2.27				2230.765	7.000
	<i>2.008</i>	<i>3.937</i>	<i>0.157</i>		<i>0.089</i>					<i>0.276</i>
# W0510-D-100-050-C	51	100	5.00	-	5.70	3632	Carbon Steel	Disc Spring Washer		7.80
	<i>2.008</i>	<i>3.937</i>	<i>0.197</i>		<i>0.224</i>					<i>0.307</i>
# W0510-D-100-060-C	51	100	6.00	-	1.67				5225.380	8.199
	<i>2.008</i>	<i>3.937</i>	<i>0.236</i>		<i>0.066</i>					<i>0.323</i>
# W0510-D-125-040-C	51	125	4.00	-	5.13	1981	Carbon Steel	Disc Spring Washer		8.50
	<i>2.008</i>	<i>4.921</i>	<i>0.157</i>		<i>0.202</i>					<i>0.335</i>
# W0510-D-125-050-C	51	125	5.00	-	5.97	3065	Carbon Steel	Disc Spring Washer		8.90
	<i>2.008</i>	<i>4.921</i>	<i>0.197</i>		<i>0.235</i>					<i>0.350</i>

Indicates item not stocked at time of printing - Please enquire for lead time

Page 28 of 35

E&OE Pricing and all details subject to change without notice - Copyright Miniature Bearings Australia Pty Ltd
MBA Size Listings are a guide to sizes only and must not be solely relied on for critical design information.

Washers - Disc Spring - Carbon Steel

Part Number	Nominal ID (B) mm	Nominal OD (A) mm	Stock Thickness (C) mm	Load to flatten kg	Loaded Height (L1) mm	Load at L1 kg	Material	Type	Load at 0.75 Height Kg	Free Height (E) mm
	<i>inches</i>	<i>inches</i>	<i>inches</i>		<i>inches</i>					<i>inches</i>
# W0510-D-125-060-C	51	125	6.00	-	6.85	4428	Carbon Steel	Disc Spring Washer		9.40
	2.008	4.921	0.236		0.270					0.370
# W0570-D-112-030-C	57	112	3.00	-	3.97	1048	Carbon Steel	Disc Spring Washer		6.90
	2.244	4.409	0.118		0.156					0.272
# W0570-D-112-040-C	57	112	4.00	-	4.87	1774	Carbon Steel	Disc Spring Washer		7.20
	2.244	4.409	0.157		0.192					0.283
# W0570-D-112-060-C	57	112	6.00	-	6.63	4368	Carbon Steel	Disc Spring Washer		8.50
	2.244	4.409	0.236		0.261					0.335
# W0610-D-125-050-C	61	125	5.00	-	6.00	3395	Carbon Steel	Disc Spring Washer		9.00
	2.402	4.921	0.197		0.236					0.354
# W0610-D-125-060-C	61	125	6.00	-	6.90	5069	Carbon Steel	Disc Spring Washer		9.60
	2.402	4.921	0.236		0.272					0.378
# W0610-D-125-080-C	61	125	8.00	-	8.72	9353	Carbon Steel	Disc Spring Washer		10.90
	2.402	4.921	0.315		0.343					0.429
# W0610-D-150-050-C	61	150	5.00	-	6.88	3102	Carbon Steel	Disc Spring Washer		10.30
	2.402	5.906	0.197		0.271					0.406

Indicates item not stocked at time of printing - Please enquire for lead time

Page 29 of 35

E&OE Pricing and all details subject to change without notice - Copyright Miniature Bearings Australia Pty Ltd
MBA Size Listings are a guide to sizes only and must not be solely relied on for critical design information.

Washers - Disc Spring - Carbon Steel

Part Number	Nominal ID (B) mm	Nominal OD (A) mm	Stock Thickness (C) mm	Load to flatten kg	Loaded Height (L1) mm	Load at L1 kg	Material	Type	Load at 0.75 Height Kg	Free Height (E) mm
	<i>inches</i>	<i>inches</i>	<i>inches</i>		<i>inches</i>					<i>inches</i>
# W0610-D-150-060-C	61	150	6.00	-	7.20	4548	Carbon Steel	Disc Spring Washer		10.80
	2.402	5.906	0.236		0.283					0.425
# W0640-D-125-035-C	64	125	3.50	-	4.63	1541	Carbon Steel	Disc Spring Washer		8.00
	2.520	4.921	0.138		0.182					0.315
# W0640-D-125-050-C	64	125	5.00	-	5.88	2989	Carbon Steel	Disc Spring Washer		8.50
	2.520	4.921	0.197		0.231					0.335
# W0640-D-125-080-C	64	125	8.00	-	8.65	8588	Carbon Steel	Disc Spring Washer		10.60
	2.520	4.921	0.315		0.341					0.417
# W0710-D-125-060-C	71	125	6.00	-	6.88	5119	Carbon Steel	Disc Spring Washer		9.30
	2.795	4.921	0.236		0.271					0.366
# W0710-D-125-080-C	71	125	8.00	-	8.60	8545	Carbon Steel	Disc Spring Washer		10.40
	2.795	4.921	0.315		0.339					0.409
# W0710-D-125-100-C	71	125	10.00	-	10.45	12406	Carbon Steel	Disc Spring Washer		11.80
	2.795	4.921	0.394		0.411					0.465
# W0710-D-150-060-C	71	150	6.00	-	7.20	4813	Carbon Steel	Disc Spring Washer		10.80
	2.795	5.906	0.236		0.283					0.425

Indicates item not stocked at time of printing - Please enquire for lead time

Page 30 of 35

E&OE Pricing and all details subject to change without notice - Copyright Miniature Bearings Australia Pty Ltd

MBA Size Listings are a guide to sizes only and must not be solely relied on for critical design information.

Washers - Disc Spring - Carbon Steel

Part Number	Nominal ID (B) mm	Nominal OD (A) mm	Stock Thickness (C) mm	Load to flatten kg	Loaded Height (L1) mm	Load at L1 kg	Material	Type	Load at 0.75 Height Kg	Free Height (E) mm
	<i>inches</i>	<i>inches</i>	<i>inches</i>		<i>inches</i>					<i>inches</i>
# W0710-D-150-080-C	71	150	8.00	-	9.00	8980	Carbon Steel	Disc Spring Washer		12.00
	2.795	5.906	0.315		0.354					0.472
# W0720-D-140-038-C	72	140	3.80	-	5.02	1719	Carbon Steel	Disc Spring Washer		8.70
	2.835	5.512	0.150		0.198					0.343
# W0720-D-140-050-C	72	140	5.00	-	6.00	2791	Carbon Steel	Disc Spring Washer		9.00
	2.835	5.512	0.197		0.236					0.354
# W0720-D-140-080-C	72	140	8.00	-	8.80	8520	Carbon Steel	Disc Spring Washer		11.20
	2.835	5.512	0.315		0.346					0.441
# W0810-D-150-080-C	81	150	8.00	-	8.92	8948	Carbon Steel	Disc Spring Washer		11.70
	3.189	5.906	0.315		0.351					0.461
# W0810-D-150-100-C	81	150	10.00	-	10.75	13905	Carbon Steel	Disc Spring Washer		13.00
	3.189	5.906	0.394		0.423					0.512
# W0820-D-160-043-C	82	160	4.30	-	5.70	2183	Carbon Steel	Disc Spring Washer		9.90
	3.228	6.299	0.169		0.224					0.390
# W0820-D-160-060-C	82	160	6.00	-	7.13	4099	Carbon Steel	Disc Spring Washer		10.50
	3.228	6.299	0.236		0.281					0.413

Indicates item not stocked at time of printing - Please enquire for lead time

Page 31 of 35

E&OE Pricing and all details subject to change without notice - Copyright Miniature Bearings Australia Pty Ltd

MBA Size Listings are a guide to sizes only and must not be solely relied on for critical design information.

Washers - Disc Spring - Carbon Steel

Part Number	Nominal ID (B) mm	Nominal OD (A) mm	Stock Thickness (C) mm	Load to flatten kg	Loaded Height (L1) mm	Load at L1 kg	Material	Type	Load at 0.75 Height Kg	Free Height (E) mm
	<i>inches</i>	<i>inches</i>	<i>inches</i>		<i>inches</i>					<i>inches</i>
# W0820-D-160-100-C	82	160	10.00	-	10.88	13826	Carbon Steel	Disc Spring Washer		13.50
	3.228	6.299	0.394		0.428					0.531
# W0820-D-200-080-C	82	200	8.00	-	9.55	7799	Carbon Steel	Disc Spring Washer		14.20
	3.228	7.874	0.315		0.376					0.559
# W0820-D-200-100-C	82	200	10.00	-	11.38	12937	Carbon Steel	Disc Spring Washer		15.50
	3.228	7.874	0.394		0.448					0.610
# W0820-D-200-120-C	82	200	12.00	-	13.15	18264	Carbon Steel	Disc Spring Washer		16.60
	3.228	7.874	0.472		0.518					0.654
# W0920-D-180-048-C	92	180	4.80	-	6.35	2647	Carbon Steel	Disc Spring Washer		11.00
	3.622	7.087	0.189		0.250					0.433
# W0920-D-180-060-C	92	180	6.00	-	7.27	3748	Carbon Steel	Disc Spring Washer		11.10
	3.622	7.087	0.236		0.286					0.437
# W0920-D-180-100-C	92	180	10.00	-	11.00	12535	Carbon Steel	Disc Spring Washer		14.50
	3.622	7.087	0.394		0.433					0.571
# W0920-D-200-100-C	92	200	10.00	-	11.40	13761	Carbon Steel	Disc Spring Washer		15.60
	3.622	7.874	0.394		0.449					0.614

Indicates item not stocked at time of printing - Please enquire for lead time

Page 32 of 35

E&OE Pricing and all details subject to change without notice - Copyright Miniature Bearings Australia Pty Ltd

MBA Size Listings are a guide to sizes only and must not be solely relied on for critical design information.

Washers - Disc Spring - Carbon Steel

Part Number	Nominal ID (B) mm	Nominal OD (A) mm	Stock Thickness (C) mm	Load to flatten kg	Loaded Height (L1) mm	Load at L1 kg	Material	Type	Load at 0.75 Height Kg	Free Height (E) mm
	<i>inches</i>	<i>inches</i>	<i>inches</i>		<i>inches</i>					<i>inches</i>
# W0920-D-200-120-C	92	200	12.00	-	13.20	19916	Carbon Steel	Disc Spring Washer		16.80
	<i>3.622</i>	<i>7.874</i>	<i>0.472</i>		<i>0.520</i>					<i>0.661</i>
# W0920-D-200-140-C	92	200	14.00	-	15.02	26708	Carbon Steel	Disc Spring Washer		18.10
	<i>3.622</i>	<i>7.874</i>	<i>0.551</i>		<i>0.591</i>					<i>0.713</i>
# W1020-D-200-055-C	102	200	5.50	-	7.25	3609	Carbon Steel	Disc Spring Washer		12.50
	<i>4.016</i>	<i>7.874</i>	<i>0.217</i>		<i>0.285</i>					<i>0.492</i>
# W1020-D-200-080-C	102	200	8.00	-	9.40	7634	Carbon Steel	Disc Spring Washer		13.60
	<i>4.016</i>	<i>7.874</i>	<i>0.315</i>		<i>0.370</i>					<i>0.535</i>
# W1020-D-200-100-C	102	200	10.00	-	11.40	14523	Carbon Steel	Disc Spring Washer		15.60
	<i>4.016</i>	<i>7.874</i>	<i>0.394</i>		<i>0.449</i>					<i>0.614</i>
# W1020-D-200-120-C	102	200	12.00	-	13.05	18292	Carbon Steel	Disc Spring Washer		16.20
	<i>4.016</i>	<i>7.874</i>	<i>0.472</i>		<i>0.514</i>					<i>0.638</i>
# W1020-D-200-140-C	102	200	14.00	-	15.05	28902	Carbon Steel	Disc Spring Washer		18.20
	<i>4.016</i>	<i>7.874</i>	<i>0.551</i>		<i>0.593</i>					<i>0.717</i>
# W1020-D-250-100-C	102	250	10.00	-	12.00	12632	Carbon Steel	Disc Spring Washer		18.00
	<i>4.016</i>	<i>9.843</i>	<i>0.394</i>		<i>0.472</i>					<i>0.709</i>

Indicates item not stocked at time of printing - Please enquire for lead time

Page 33 of 35

E&OE Pricing and all details subject to change without notice - Copyright Miniature Bearings Australia Pty Ltd
MBA Size Listings are a guide to sizes only and must not be solely relied on for critical design information.

Washers - Disc Spring - Carbon Steel

Part Number	Nominal ID (B) mm	Nominal OD (A) mm	Stock Thickness (C) mm	Load to flatten kg	Loaded Height (L1) mm	Load at L1 kg	Material	Type	Load at 0.75 Height Kg	Free Height (E) mm
	<i>inches</i>	<i>inches</i>	<i>inches</i>		<i>inches</i>					<i>inches</i>
# W1020-D-250-120-C	102	250	12.00	-	13.75	18286	Carbon Steel	Disc Spring Washer		19.00
	<i>4.016</i>	<i>9.843</i>	<i>0.472</i>		<i>0.541</i>					<i>0.748</i>
# W1120-D-200-120-C	112	200	12.00	-	13.05	19572	Carbon Steel	Disc Spring Washer		16.20
	<i>4.409</i>	<i>7.874</i>	<i>0.472</i>		<i>0.514</i>					<i>0.638</i>
# W1120-D-200-140-C	112	200	14.00	-	14.88	25662	Carbon Steel	Disc Spring Washer		17.50
	<i>4.409</i>	<i>7.874</i>	<i>0.551</i>		<i>0.586</i>					<i>0.689</i>
# W1120-D-200-160-C	112	200	16.00	-	16.70	30493	Carbon Steel	Disc Spring Washer		18.80
	<i>4.409</i>	<i>7.874</i>	<i>0.630</i>		<i>0.657</i>					<i>0.740</i>
# W1120-D-225-065-C	112	225	6.50	-	8.27	4456	Carbon Steel	Disc Spring Washer		13.60
	<i>4.409</i>	<i>8.858</i>	<i>0.256</i>		<i>0.326</i>					<i>0.535</i>
# W1120-D-225-080-C	112	225	8.00	-	9.63	7071	Carbon Steel	Disc Spring Washer		14.50
	<i>4.409</i>	<i>8.858</i>	<i>0.315</i>		<i>0.379</i>					<i>0.571</i>
# W1120-D-225-120-C	112	225	12.00	-	13.25	17092	Carbon Steel	Disc Spring Washer		17.00
	<i>4.409</i>	<i>8.858</i>	<i>0.472</i>		<i>0.522</i>					<i>0.669</i>
# W1270-D-250-070-C	127	250	7.00	-	8.95	5044	Carbon Steel	Disc Spring Washer		14.80
	<i>5.000</i>	<i>9.843</i>	<i>0.276</i>		<i>0.352</i>					<i>0.583</i>

Indicates item not stocked at time of printing - Please enquire for lead time

Page 34 of 35

E&OE Pricing and all details subject to change without notice - Copyright Miniature Bearings Australia Pty Ltd
MBA Size Listings are a guide to sizes only and must not be solely relied on for critical design information.

Washers - Disc Spring - Carbon Steel

Part Number	Nominal ID (B) mm	Nominal OD (A) mm	Stock Thickness (C) mm	Load to flatten kg	Loaded Height (L1) mm	Load at L1 kg	Material	Type	Load at 0.75 Height Kg	Free Height (E) mm
	<i>inches</i>	<i>inches</i>	<i>inches</i>		<i>inches</i>					<i>inches</i>
# W1270-D-250-100-C	127	250	10.00	-	11.75	11899	Carbon Steel	Disc Spring Washer		17.00
	<i>5.000</i>	<i>9.843</i>	<i>0.394</i>		<i>0.463</i>					<i>0.669</i>
# W1270-D-250-120-C	127	250	12.00	-	13.82	21069	Carbon Steel	Disc Spring Washer		19.30
	<i>5.000</i>	<i>9.843</i>	<i>0.472</i>		<i>0.544</i>					<i>0.760</i>
# W1270-D-250-140-C	127	250	14.00	-	15.40	2486	Carbon Steel	Disc Spring Washer		19.60
	<i>5.000</i>	<i>9.843</i>	<i>0.551</i>		<i>0.606</i>					<i>0.772</i>
# W1270-D-250-160-C	127	250	16.00	-	17.45	38281	Carbon Steel	Disc Spring Washer		21.80
	<i>5.000</i>	<i>9.843</i>	<i>0.630</i>		<i>0.687</i>					<i>0.858</i>

Indicates item not stocked at time of printing - Please enquire for lead time

Page 35 of 35

E&OE Pricing and all details subject to change without notice - Copyright Miniature Bearings Australia Pty Ltd
MBA Size Listings are a guide to sizes only and must not be solely relied on for critical design information.

DISTRIBUTED BY

Distributed By:

